



WIND FARM "APRICENA"

LAYOUT SOTTOSTAZIONE ELETTRICA

Engineering Civil



Signed: ing. Michele Curtotti
Association Number No N° 1704

				DATE	SCALE 1/X.XXX	 WIND FARM APRICENA LAYOUT SOTTOSTAZIONE ELETTRICA DI UTENZA San Severo (FG)	ENGINEERING	
				12/21	DRAWN MC		CAD Vers.:	Page Vers.:
				12/21	CHECKED MC		Name collection:	Page: 01
A	01/12/2021	PRIMA EMISSIONE		12/21	REVISED-EDPR FS		Collection	Cont: 01 di 09
EDIC.	DATE	MODIFICATION	PAGES MODIFIED	Format A3		CAD N°: Planimetria SE.dwg		

A

B

C

D

E

A

B


C

D

E

N° PAGE	DESCRIPTION	DATE	EDIC. PAGE	N° PAGE	DESCRIPTION	DATE	EDIC. PAGE
A0	COVER	01/12/2021	A				
B0	INDEX	01/12/2021	A				
01	LAYOUT SOTTOSTAZIONE SU ORTOFOTO	01/12/2021	A				
02	LAYOUT SOTTOSTAZIONE SU BASE CATASTALE	01/12/2021	A				
03	LAYOUT SOTTOSTAZIONE SU CTR	01/12/2021	A				
04	LAYOUT SOTTOSTAZIONE SU BASE CATASTALE/ORTOFOTO	01/12/2021	A				
05	LAYOUT SOTTOSTAZIONE ELETTRICA-PIANTA	01/12/2021	A				
06	EDIFICIO CONTROLLO-PIANTA	01/12/2021	A				
07	EDIFICIO CONTROLLO-PROSPETTI	01/12/2021	A				
08	SEZIONI ELETTROMECCANICHE STAZIONE RTN	01/12/2021	A				
09	SEZIONI ELETTROMECCANICHE UTENZA/RTN	01/12/2021	A				


Engineering Civil

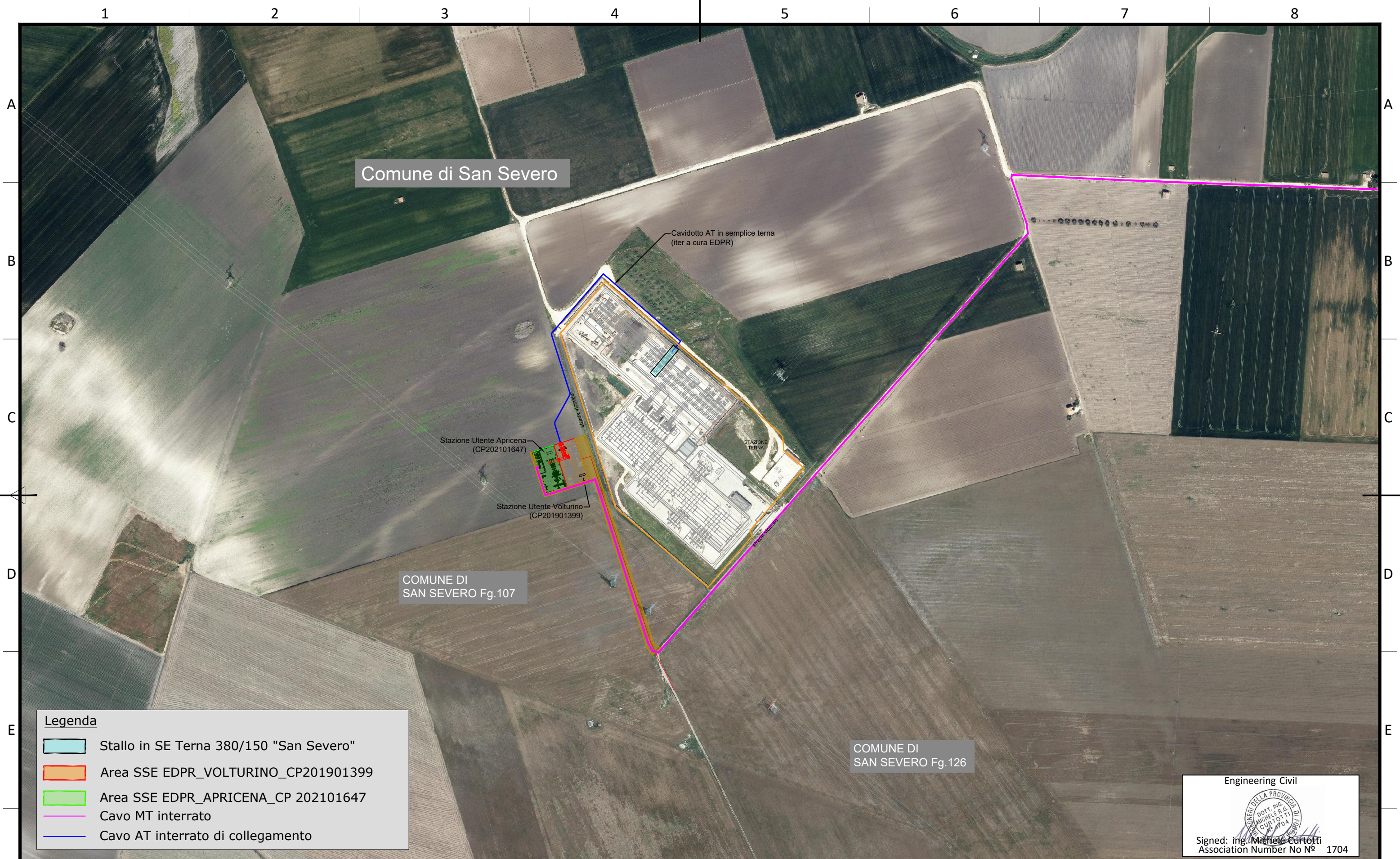


Signed: ing. Michele Curtotti
Association Number No N° 1704

F

F

					DATE	SCALE 1/X.XXX	 WIND FARM APRICENA LAYOUT SOTTOSTAZIONE ELETTRICA DI UTENZA PROGETTAZIONE ELETTROMECCANICA	ENGINEERING		
					12/21	DRAWN MC		CAD Vers.:	Page Vers.:	
					12/21	CHECKED MC		Name collection:	Page: 02	
A	01/12/2021	INDICATE MODIFICATION			12/21	REVISED-EDPR FS	Collection	Cont: 02 DI 09		
EDIC.	DATE	MODIFICATION		PAGES MODIFIED	Format A3			CAD N°: Planimetria SE.dwg		



Legenda

	Stallo in SE Terna 380/150 "San Severo"
	Area SSE EDPR_VOLTURINO_CP201901399
	Area SSE EDPR_APRICENA_CP 202101647
	Cavo MT interrato
	Cavo AT interrato di collegamento

Engineering Civil

 Signed: ing. Michele Curtotti
 Association Number No N° 1704

					DATE	SCALE 1/5000		 WIND FARM APRICENA Title LAYOUT SOTTOSTAZIONE SU ORTOFOTO	ING. MICHELE CURTOTTI		
					12/21	DRAWN	MC		CAD Vers.: ma	Page Vers.:	
					12/21	CHECKED	MC		Name Collection	Page: 01	
A	01/12/2021	MC	MC	FS	PRIMA EMISSIONE			Cont: 01 di 09			
EDIC.	DATE	DRAWN	CHECKED	REVISED-EDPR	MODIFICATION			CAD N°:			
1	2	3						6	7		

Comune di San Severo

COMUNE DI SAN SEVERO Fg.107

COMUNE DI SAN SEVERO Fg.126

Legenda

- Stallo in SE Terna 380/150 "San Severo"
- Area SSE EDPR_VOLTURINO_CP201901399
- Area SSE EDPR_APRICENA_CP 202101647
- Cavo MT interrato
- Cavo AT interrato di collegamento

Engineering Civil



Signed: ing. Michele Curtotti
Association Number No N° 1704

EDIC.	DATE	DRAWN	CHECKED	REVISED-EDPR	MODIFICATION
A	01/12/2021	MC	MC	FS	PRIMA EMISSIONE

DATE	SCALE
12/21	1/4000
12/21	DRAWN MC
12/21	CHECKED MC
12/21	REVISED-EDPR FS
Format A3	

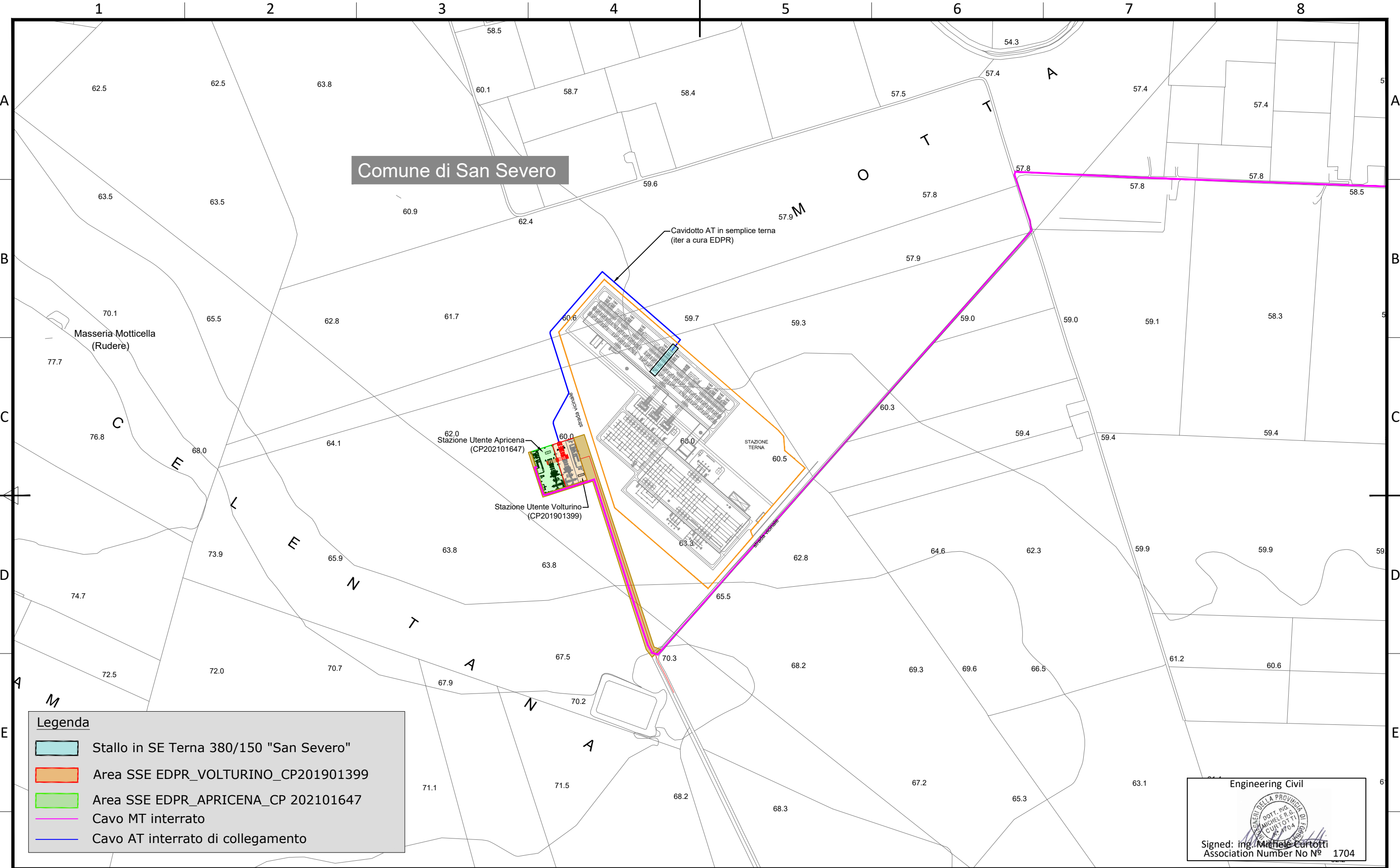
edp renewables

WIND FARM APRICENA

Title
LAYOUT SOTTOSTAZIONE SU CATASTALE

ING. MICHELE CURTOTTI	
CAD Vers.: ma	Page Vers.:
Name Collection SSE	Page: 02 Cont: 02 di 09
CAD N°:	

Comune di San Severo



Legenda

- Stallo in SE Terna 380/150 "San Severo"
- Area SSE EDPR_VOLTURINO_CP201901399
- Area SSE EDPR_APRICENA_CP 202101647
- Cavo MT interrato
- Cavo AT interrato di collegamento

Engineering Civil

Signed: ing. Michele Curtotti
Association Number No N° 1704

EDIC.	DATE	DRAWN	CHECKED	REVISED-EDPR	MODIFICATION
A	01/12/2021	MC	MC	FS	PRIMA EMISSIONE

DATE	SCALE	1/5000
12/21	DRAWN	MC
12/21	CHECKED	MC
12/21	REVISED-EDPR	FS
Format A3		

WIND FARM APRICENA

Title
LAYOUT SOTTOSTAZIONE SU CTR

ING. MICHELE CURTOTTI	
CAD Vers.: ma	Page Vers.:
Name Collection SSE	Page: 03 Cont: 03 di 09
CAD N°:	

Comune di San Severo

COMUNE DI SAN SEVERO Fg.107

COMUNE DI SAN SEVERO Fg.126

Legenda

- Stallo in SE Terna 380/150 "San Severo"
- Area SSE EDPR_VOLTURINO_CP201901399
- Area SSE EDPR_APRICENA_CP 202101647
- Cavo MT interrato
- Cavo AT interrato di collegamento

Engineering Civil



Signed: ing. Michele Curtotti
Association Number No N° 1704

EDIC.	DATE	DRAWN	CHECKED	REVISED-EDPR	MODIFICATION								
A	01/12/2021	MC	MC	FS	PRIMA EMISSIONE								
<table border="1" style="width: 100%; border-collapse: collapse;"> <tr> <td style="width: 10px;">1</td> <td style="width: 10px;">2</td> <td style="width: 10px;">3</td> <td style="width: 10px;">4</td> <td style="width: 10px;">5</td> <td style="width: 10px;">6</td> <td style="width: 10px;">7</td> <td style="width: 10px;">8</td> </tr> </table>						1	2	3	4	5	6	7	8
1	2	3	4	5	6	7	8						

DATE	SCALE	1/4000
12/21	DRAWN	MC
12/21	CHECKED	MC
12/21	REVISED-EDPR	FS

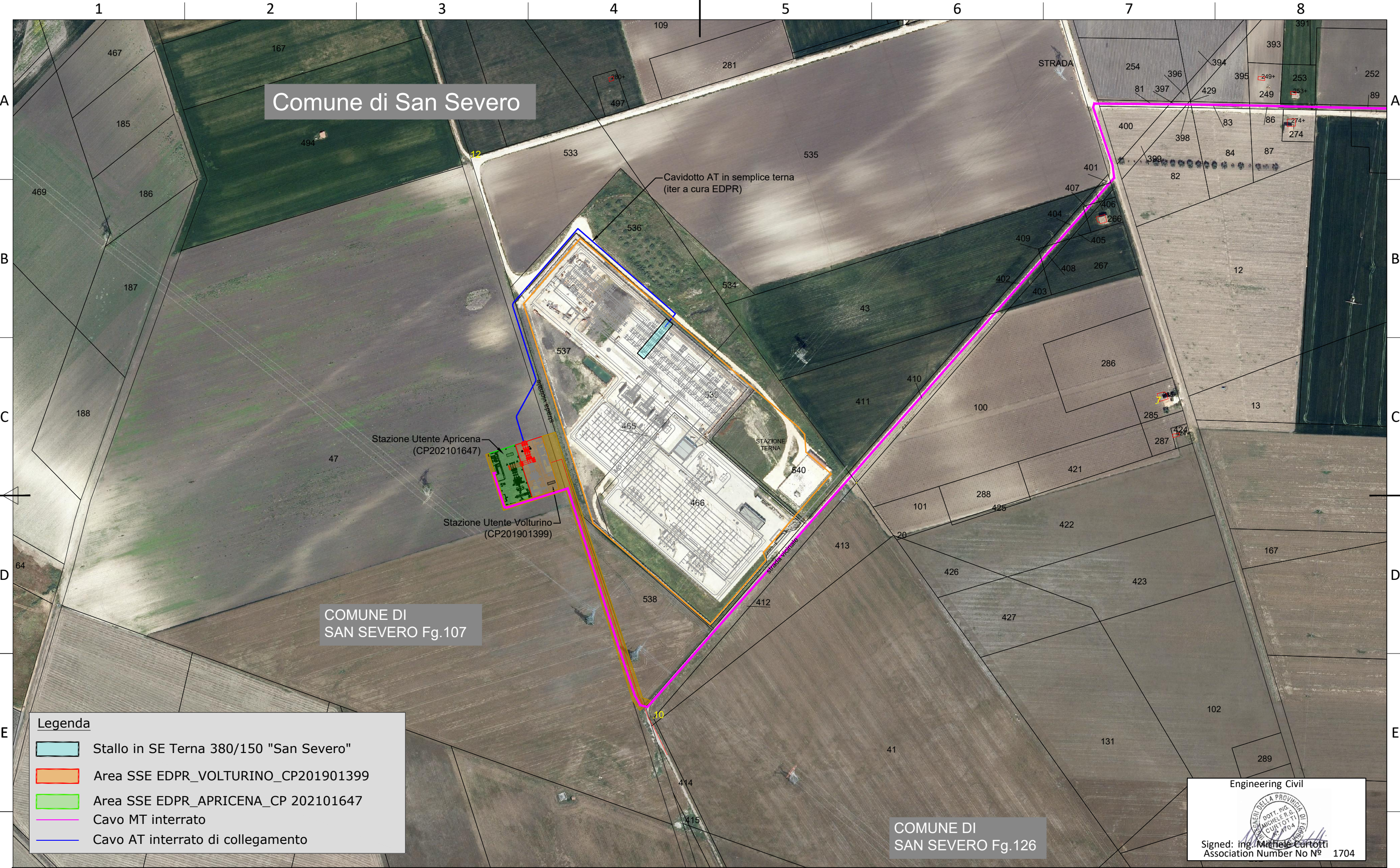
edp renewables

WIND FARM APRICENA

Title

LAYOUT SOTTOSTAZIONE ORTOFOTO/CATASTALE

ING. MICHELE CURTOTTI	
CAD Vers.: ma	Page Vers.:
Name Collection SSE	Page: 04 Cont: 04 di 09
CAD N°:	



1 2 3 4 5 6 7 8

A

A

B

B

C

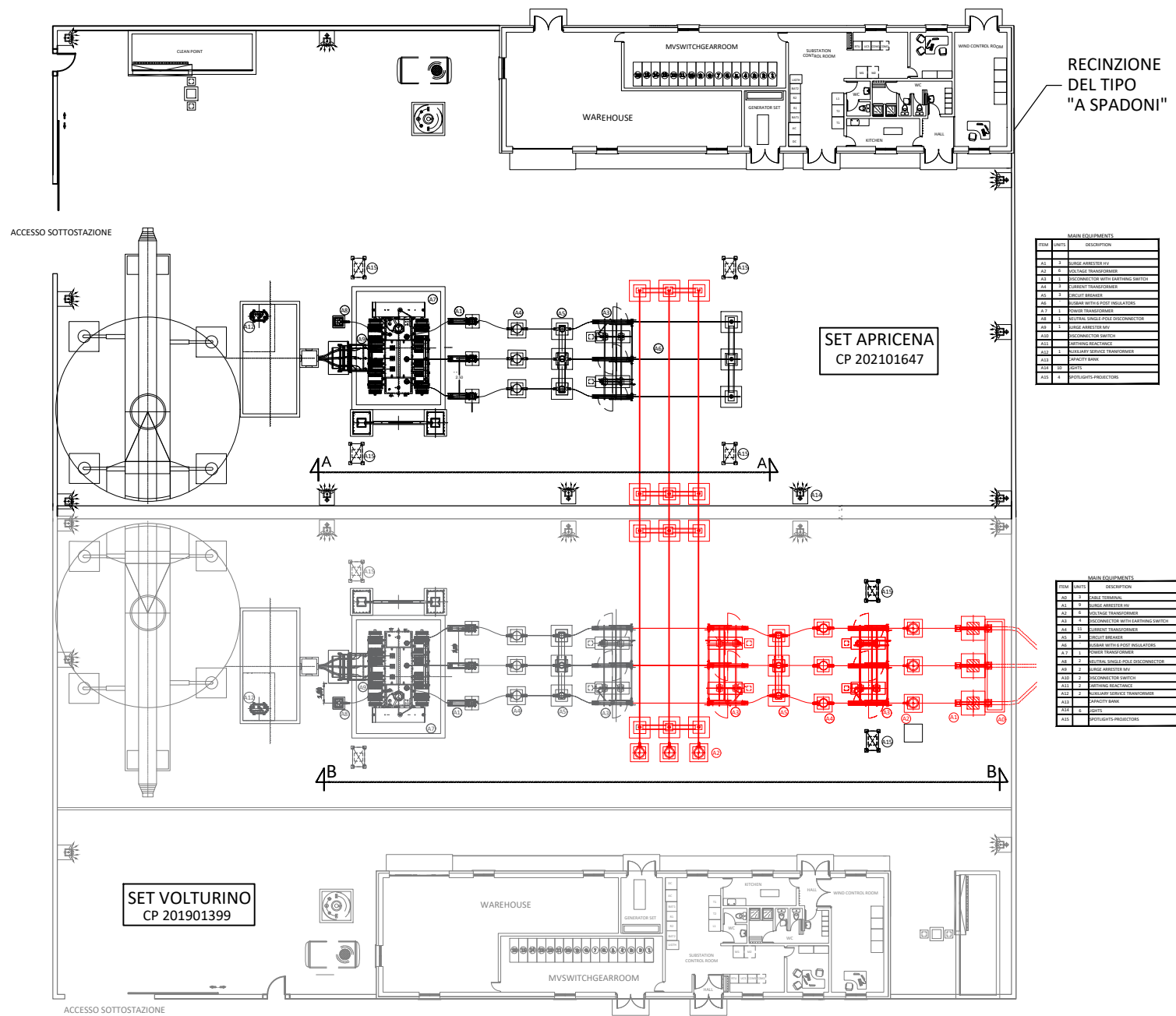
C

D

D

E

E



ITEM	DESCRIPTION
01	10KV BUSBAR
02	10KV TRANSFORMER
03	10KV DISCONNECTOR WITH EXTINGUISHING SYSTEM
04	10KV CIRCUIT BREAKER
05	10KV ISOLATOR
06	10KV SWITCHGEAR
07	10KV TRANSFORMER
08	10KV DISCONNECTOR WITH EXTINGUISHING SYSTEM
09	10KV CIRCUIT BREAKER
10	10KV ISOLATOR
11	10KV SWITCHGEAR
12	10KV TRANSFORMER
13	10KV DISCONNECTOR WITH EXTINGUISHING SYSTEM
14	10KV CIRCUIT BREAKER
15	10KV ISOLATOR
16	10KV SWITCHGEAR
17	10KV TRANSFORMER
18	10KV DISCONNECTOR WITH EXTINGUISHING SYSTEM
19	10KV CIRCUIT BREAKER
20	10KV ISOLATOR
21	10KV SWITCHGEAR
22	10KV TRANSFORMER
23	10KV DISCONNECTOR WITH EXTINGUISHING SYSTEM
24	10KV CIRCUIT BREAKER
25	10KV ISOLATOR
26	10KV SWITCHGEAR
27	10KV TRANSFORMER
28	10KV DISCONNECTOR WITH EXTINGUISHING SYSTEM
29	10KV CIRCUIT BREAKER
30	10KV ISOLATOR
31	10KV SWITCHGEAR
32	10KV TRANSFORMER
33	10KV DISCONNECTOR WITH EXTINGUISHING SYSTEM
34	10KV CIRCUIT BREAKER
35	10KV ISOLATOR
36	10KV SWITCHGEAR
37	10KV TRANSFORMER
38	10KV DISCONNECTOR WITH EXTINGUISHING SYSTEM
39	10KV CIRCUIT BREAKER
40	10KV ISOLATOR
41	10KV SWITCHGEAR
42	10KV TRANSFORMER
43	10KV DISCONNECTOR WITH EXTINGUISHING SYSTEM
44	10KV CIRCUIT BREAKER
45	10KV ISOLATOR
46	10KV SWITCHGEAR
47	10KV TRANSFORMER
48	10KV DISCONNECTOR WITH EXTINGUISHING SYSTEM
49	10KV CIRCUIT BREAKER
50	10KV ISOLATOR
51	10KV SWITCHGEAR
52	10KV TRANSFORMER
53	10KV DISCONNECTOR WITH EXTINGUISHING SYSTEM
54	10KV CIRCUIT BREAKER
55	10KV ISOLATOR
56	10KV SWITCHGEAR
57	10KV TRANSFORMER
58	10KV DISCONNECTOR WITH EXTINGUISHING SYSTEM
59	10KV CIRCUIT BREAKER
60	10KV ISOLATOR
61	10KV SWITCHGEAR
62	10KV TRANSFORMER
63	10KV DISCONNECTOR WITH EXTINGUISHING SYSTEM
64	10KV CIRCUIT BREAKER
65	10KV ISOLATOR
66	10KV SWITCHGEAR
67	10KV TRANSFORMER
68	10KV DISCONNECTOR WITH EXTINGUISHING SYSTEM
69	10KV CIRCUIT BREAKER
70	10KV ISOLATOR
71	10KV SWITCHGEAR
72	10KV TRANSFORMER
73	10KV DISCONNECTOR WITH EXTINGUISHING SYSTEM
74	10KV CIRCUIT BREAKER
75	10KV ISOLATOR
76	10KV SWITCHGEAR
77	10KV TRANSFORMER
78	10KV DISCONNECTOR WITH EXTINGUISHING SYSTEM
79	10KV CIRCUIT BREAKER
80	10KV ISOLATOR
81	10KV SWITCHGEAR
82	10KV TRANSFORMER
83	10KV DISCONNECTOR WITH EXTINGUISHING SYSTEM
84	10KV CIRCUIT BREAKER
85	10KV ISOLATOR
86	10KV SWITCHGEAR
87	10KV TRANSFORMER
88	10KV DISCONNECTOR WITH EXTINGUISHING SYSTEM
89	10KV CIRCUIT BREAKER
90	10KV ISOLATOR
91	10KV SWITCHGEAR
92	10KV TRANSFORMER
93	10KV DISCONNECTOR WITH EXTINGUISHING SYSTEM
94	10KV CIRCUIT BREAKER
95	10KV ISOLATOR
96	10KV SWITCHGEAR
97	10KV TRANSFORMER
98	10KV DISCONNECTOR WITH EXTINGUISHING SYSTEM
99	10KV CIRCUIT BREAKER
100	10KV ISOLATOR

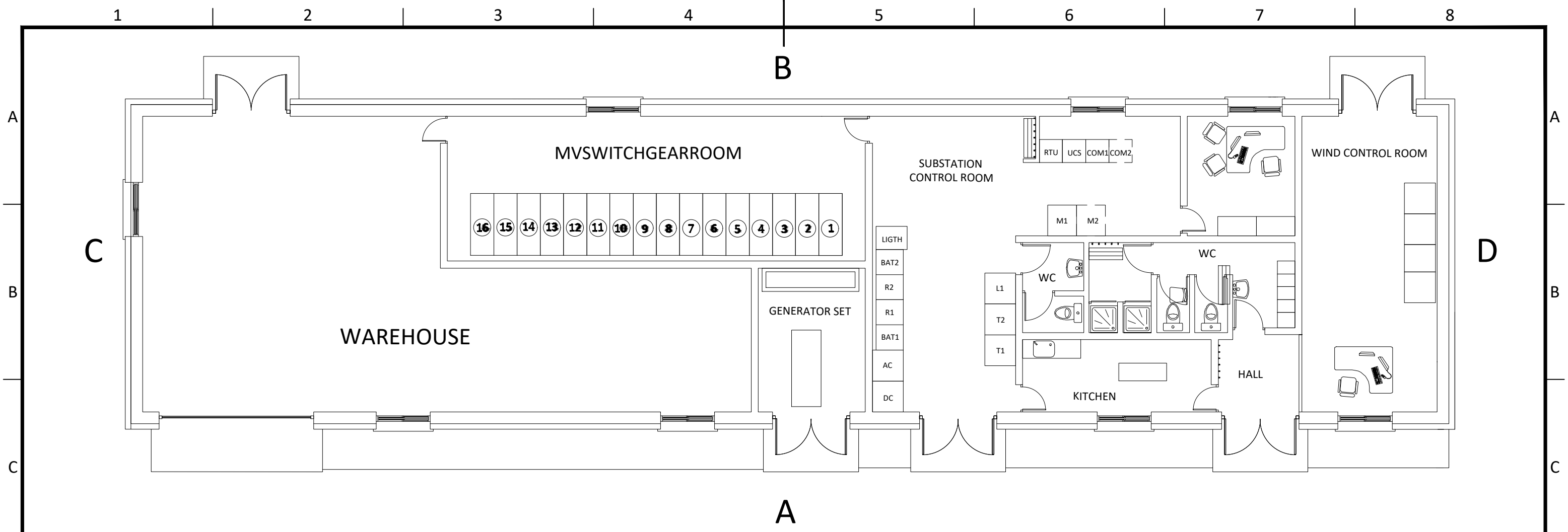
ITEM	DESCRIPTION
01	10KV BUSBAR
02	10KV TRANSFORMER
03	10KV DISCONNECTOR WITH EXTINGUISHING SYSTEM
04	10KV CIRCUIT BREAKER
05	10KV ISOLATOR
06	10KV SWITCHGEAR
07	10KV TRANSFORMER
08	10KV DISCONNECTOR WITH EXTINGUISHING SYSTEM
09	10KV CIRCUIT BREAKER
10	10KV ISOLATOR
11	10KV SWITCHGEAR
12	10KV TRANSFORMER
13	10KV DISCONNECTOR WITH EXTINGUISHING SYSTEM
14	10KV CIRCUIT BREAKER
15	10KV ISOLATOR
16	10KV SWITCHGEAR
17	10KV TRANSFORMER
18	10KV DISCONNECTOR WITH EXTINGUISHING SYSTEM
19	10KV CIRCUIT BREAKER
20	10KV ISOLATOR
21	10KV SWITCHGEAR
22	10KV TRANSFORMER
23	10KV DISCONNECTOR WITH EXTINGUISHING SYSTEM
24	10KV CIRCUIT BREAKER
25	10KV ISOLATOR
26	10KV SWITCHGEAR
27	10KV TRANSFORMER
28	10KV DISCONNECTOR WITH EXTINGUISHING SYSTEM
29	10KV CIRCUIT BREAKER
30	10KV ISOLATOR
31	10KV SWITCHGEAR
32	10KV TRANSFORMER
33	10KV DISCONNECTOR WITH EXTINGUISHING SYSTEM
34	10KV CIRCUIT BREAKER
35	10KV ISOLATOR
36	10KV SWITCHGEAR
37	10KV TRANSFORMER
38	10KV DISCONNECTOR WITH EXTINGUISHING SYSTEM
39	10KV CIRCUIT BREAKER
40	10KV ISOLATOR
41	10KV SWITCHGEAR
42	10KV TRANSFORMER
43	10KV DISCONNECTOR WITH EXTINGUISHING SYSTEM
44	10KV CIRCUIT BREAKER
45	10KV ISOLATOR
46	10KV SWITCHGEAR
47	10KV TRANSFORMER
48	10KV DISCONNECTOR WITH EXTINGUISHING SYSTEM
49	10KV CIRCUIT BREAKER
50	10KV ISOLATOR
51	10KV SWITCHGEAR
52	10KV TRANSFORMER
53	10KV DISCONNECTOR WITH EXTINGUISHING SYSTEM
54	10KV CIRCUIT BREAKER
55	10KV ISOLATOR
56	10KV SWITCHGEAR
57	10KV TRANSFORMER
58	10KV DISCONNECTOR WITH EXTINGUISHING SYSTEM
59	10KV CIRCUIT BREAKER
60	10KV ISOLATOR
61	10KV SWITCHGEAR
62	10KV TRANSFORMER
63	10KV DISCONNECTOR WITH EXTINGUISHING SYSTEM
64	10KV CIRCUIT BREAKER
65	10KV ISOLATOR
66	10KV SWITCHGEAR
67	10KV TRANSFORMER
68	10KV DISCONNECTOR WITH EXTINGUISHING SYSTEM
69	10KV CIRCUIT BREAKER
70	10KV ISOLATOR
71	10KV SWITCHGEAR
72	10KV TRANSFORMER
73	10KV DISCONNECTOR WITH EXTINGUISHING SYSTEM
74	10KV CIRCUIT BREAKER
75	10KV ISOLATOR
76	10KV SWITCHGEAR
77	10KV TRANSFORMER
78	10KV DISCONNECTOR WITH EXTINGUISHING SYSTEM
79	10KV CIRCUIT BREAKER
80	10KV ISOLATOR
81	10KV SWITCHGEAR
82	10KV TRANSFORMER
83	10KV DISCONNECTOR WITH EXTINGUISHING SYSTEM
84	10KV CIRCUIT BREAKER
85	10KV ISOLATOR
86	10KV SWITCHGEAR
87	10KV TRANSFORMER
88	10KV DISCONNECTOR WITH EXTINGUISHING SYSTEM
89	10KV CIRCUIT BREAKER
90	10KV ISOLATOR
91	10KV SWITCHGEAR
92	10KV TRANSFORMER
93	10KV DISCONNECTOR WITH EXTINGUISHING SYSTEM
94	10KV CIRCUIT BREAKER
95	10KV ISOLATOR
96	10KV SWITCHGEAR
97	10KV TRANSFORMER
98	10KV DISCONNECTOR WITH EXTINGUISHING SYSTEM
99	10KV CIRCUIT BREAKER
100	10KV ISOLATOR

Engineering Civil

 Signed: ing. Michele Curtotti
 Association Number No N° 1704

					DATE	SCALE 1/100	 WIND FARM APRICENA	ING. MICHELE CURTOTTI		
					12/21	DRAWN MC		CAD Vers.:	Page Vers.:	
					12/21	CHECKED MC		Name Collection	Page: 05	
A	01/12/2021	MC	MC	FS	PRIMA EMISSIONE		Title			
EDIC.	DATE	DRAWN	CHECKED	REVISED-EDPR	MODIFICATION		LAYOUT SOTTOSTAZIONE ELETTRICA UTENZA - PIANTA			
					Format A3		CAD N°:		Cont: 05 di 09	

1 2 3 4 5 6 7 8



CUBICLES IN SWITCHGEAR ROOM	
BUSBAR 1	
1	Circuit 1 WF "A"
2	--
3	--
4	--
5	Capacitor bank protection
6	Auxiliary service transformer
7	Measurement
8	Power transformer protection
COUPLING BETWEEN BUSBARS	
9	Coupling
10	Riser
BUSBAR 2	
11	Power transformer protection
12	Measurement
13	Capacitor bank protection
14	Auxiliary service transformer
15	Circuit 1 WF "B"
16	--

EQUIPMENTS IN SUBSTATIONS' CONTROL ROOM	
PROTECTION PANELS	
T1	Transformer 1
T2	--
L1	Line 1
INTEGRATED CONTROL SYSTEM PANELS	
COM1	Communication panel for utility 1
COM2	--
UCS	Substation scada system
RTU	Communication panel for EDPR
M1	Measurement 1
M2	--
AUXILIARY SERVICES PANELS AND EQUIPMENTS	
R1	Rectifier 1
R2	--
A.C.	Auxiliary services A.C.
D.C.	Auxiliary services D.C.
BAT1	Battery charger 1
BAT2	--
LIGHT	Light

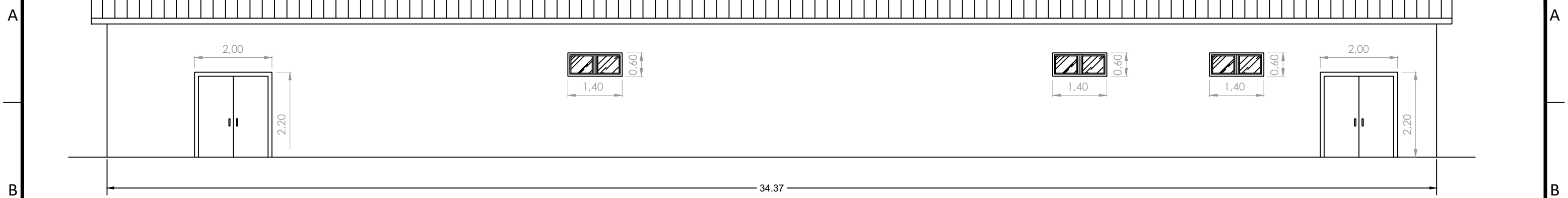
CONTROL BUILDING AREAS	
Wind Control Room	26,7m2
WC 1	12,2m2
WC 2	3,7m2
Kitchen	9,1m2
Substation Contol Room	38,5m2
Generator Set	10,3m2
Warehouse	88,8m2
Switchgear Room	40,5m2

Engineering Civil

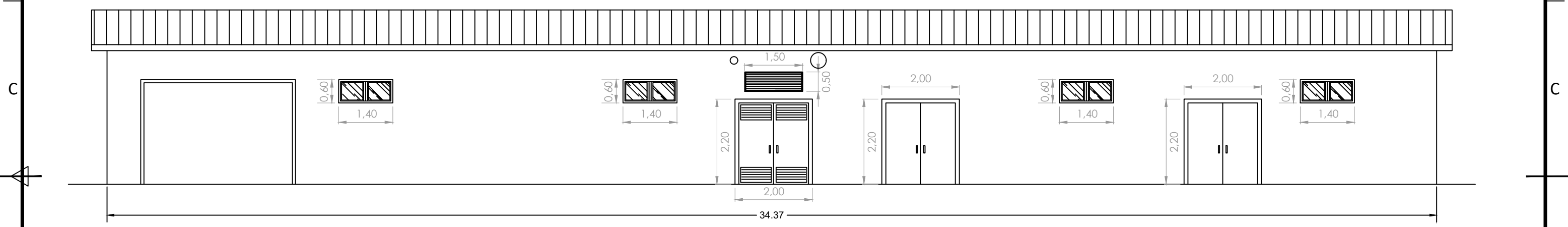
 Signed: ing. Michele Curtotti
 Association Number No N° 1704

					DATE	SCALE 1/50	 WIND FARM APRICENA Title EDIFICIO DI CONTROLLO-PIANTA	ING. MICHELE CURTOTTI		
					12/21	DRAWN MC		CAD Vers.:	Page Vers.: X	
					12/21	CHECKED MC		Name Collection	Page: 06	
A	01/12/2021	MC	MC	FS	PRIMA EMISSIONE		SSE		Cont: 06 di 09	
EDIC.	DATE	DRAWN	CHECKED	REVISED-EDPR	MODIFICATION		CAD N°:			

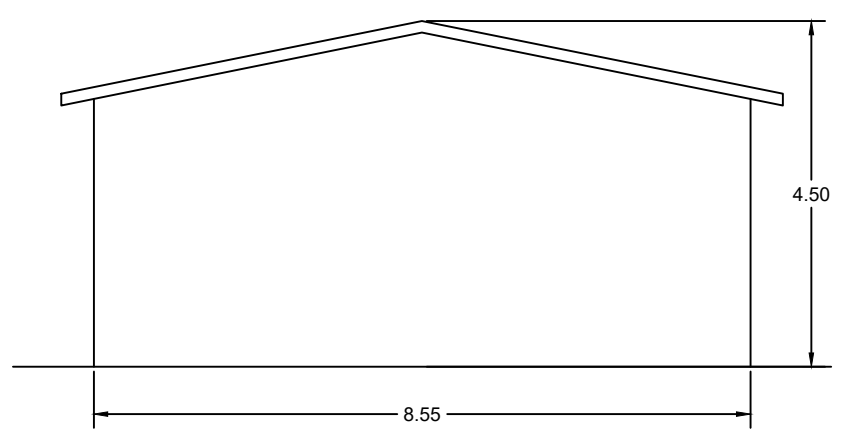
1 2 3 4 5 6 7 8



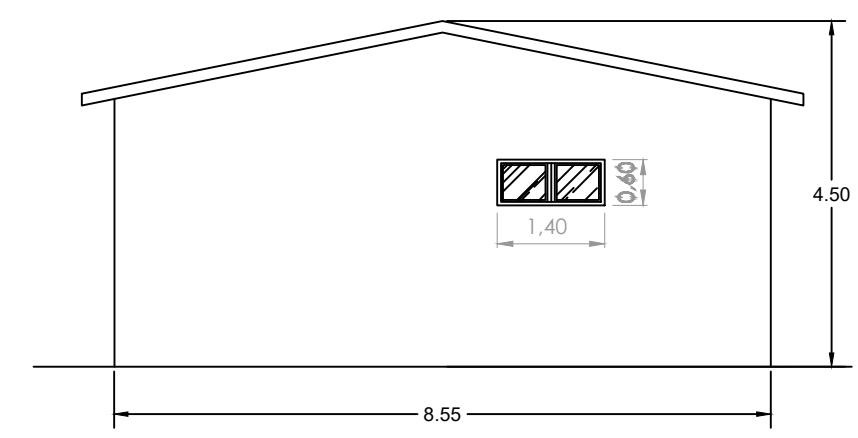
PROSPETTO A



PROSPETTO B



PROSPETTO D



PROSPETTO C

Engineering Civil
 DOTT. ING. MICHELE R.S. CURTOTTI
 #04
 Signed: ing. Michele Curtotti
 Association Number No N° 1704

						DATE	SCALE 1:50	 WIND FARM APRICENA Title EDIFICIO DI CONTROLLO-PROSPETTI	ING. MICHELE CURTOTTI		
						12/21	DRAWN MC		CAD Vers.:	Page Vers.:	
						12/21	CHECKED MC		Name Collection	Page: 07	
A	01/12/2021	MC	MC	FS	PRIMA EMISSIONE	12/21	REVISED-EDPR FS	SSE	Cont: 07 di 09		
EDIC.	DATE	DRAWN	CHECKED	REVISED-EDPR	MODIFICATION	Format A3		CAD N°:			

1 2 3 4 5 6 7 8

1 2 3 4 5 6 7 8

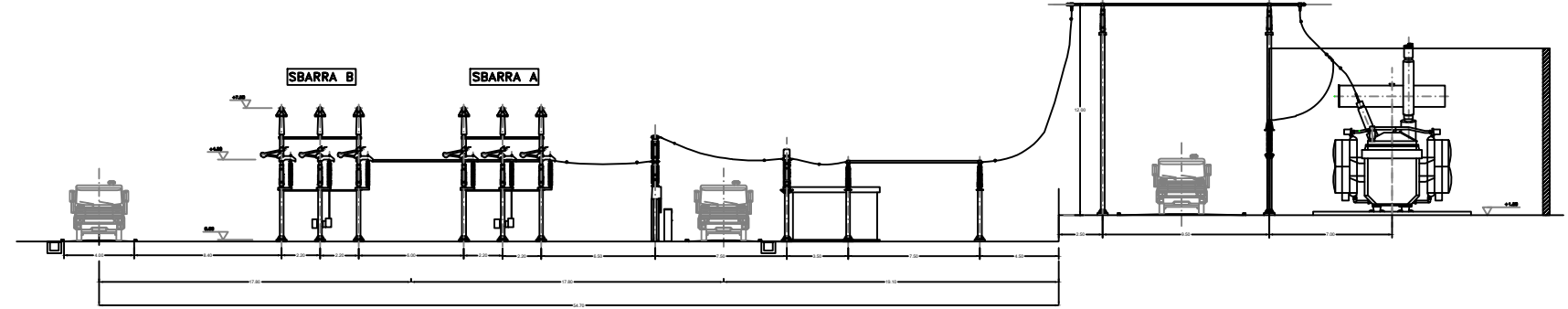
A

A

SEZIONE LONGITUDINALE SECONDARIO ATR 380/150 kV

B

B



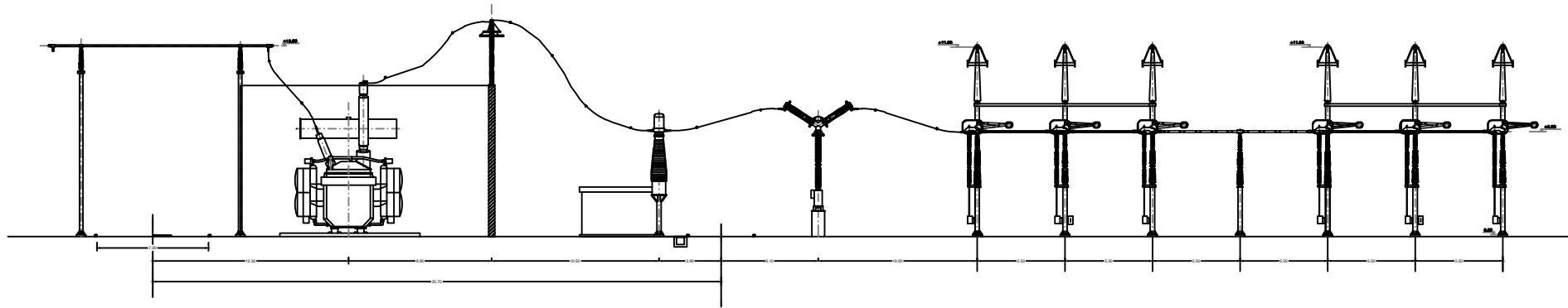
C

C

SEZIONE LONGITUDINALE PRIMARIO ATR 380/150 kV

D

D



E


E

Engineering Civil

 Signed: ing. Michele Curtotti
 Association Number No N° 1704

F

F

						DATE	SCALE 1/100	 WIND FARM APRICENA Title SEZIONI ELETROMECCANICHE STAZIONE RTN SAN SEVERO	ING. MICHELE CURTOTTI	
						12/21	DRAWN MC		CAD Vers.:	Page Vers.:
						12/21	CHECKED MC		Name Collection	Page: 08
A	01/12/2021	MC	MC	FS	PRIMA EMISSIONE	12/21	REVISED-EDPR FS	SSE	Cont: 08 di 09	
EDIC.	DATE	DRAWN	CHECKED	REVISED-EDPR	MODIFICATION		Format A3	CAD N°:		

1 2 3 4 5 6 7

1 2 3 4 5 6 7 8

A

A

B

B

C

C

D

D

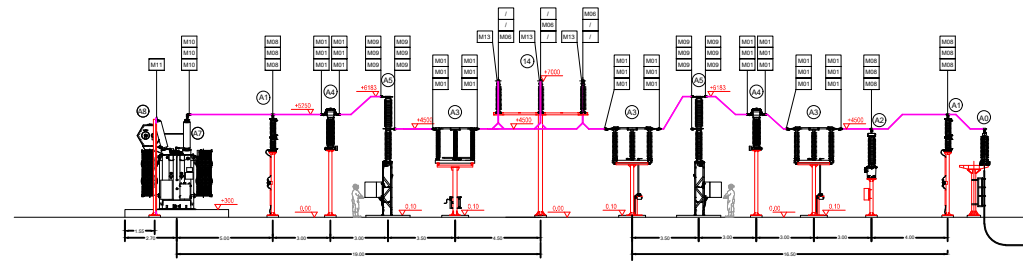
E

E

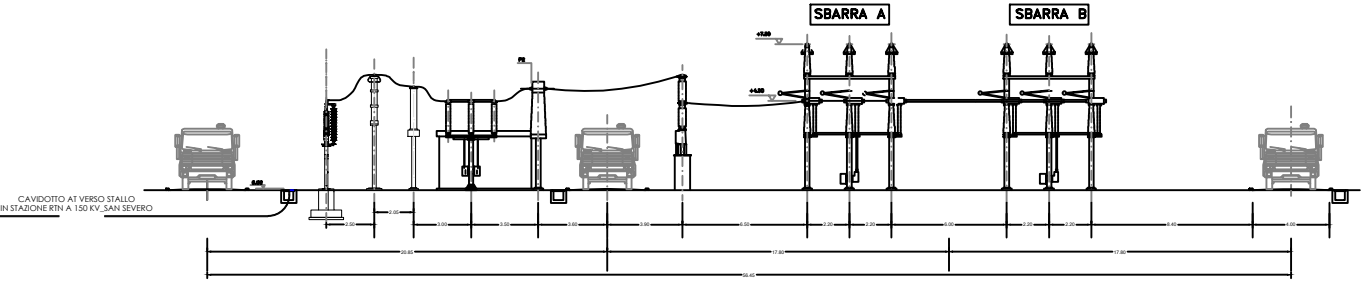
F

F

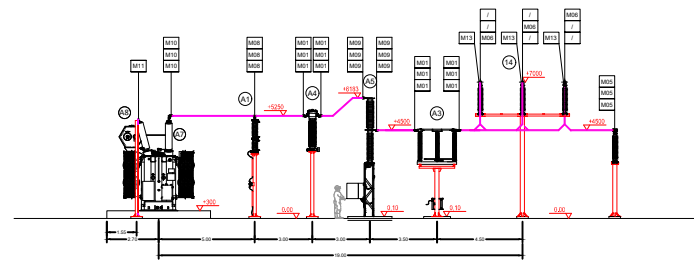
SET APRICENA VISTA B-B



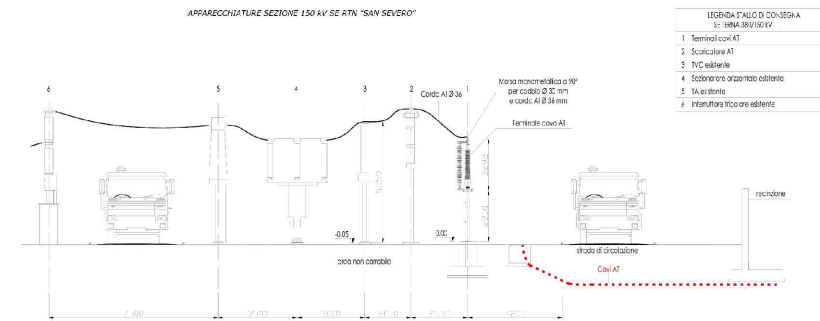
STALLO 150 kV IN STAZIONE RTN SAN SEVERO



SET APRICENA VISTA A-A



PARTICOLARE STALLO 150 kV IN STAZIONE RTN



Engineering Civil
 Signed: ing. Michele Curtotti
 Association Number No N° 1704

EDIC.	DATE	DRAWN	CHECKED	REVISED-EDPR	MODIFICATION
A	01/12/2021	MC	MC	FS	PRIMA EMISSIONE

DATE	SCALE	1/200
12/21	DRAWN	MC
12/21	CHECKED	MC
12/21	REVISED-EDPR	FS

edp renewables
WIND FARM APRICENA
 Title
 SEZIONI ELETTROMECCANICHE UTENZA/RTN

ING. MICHELE CURTOTTI	
CAD Vers.:	Page Vers.:
Name Collection SSE	Page: 09 Cont: 09 di 09
CAD N°:	

1 2 3 4 5 6 7