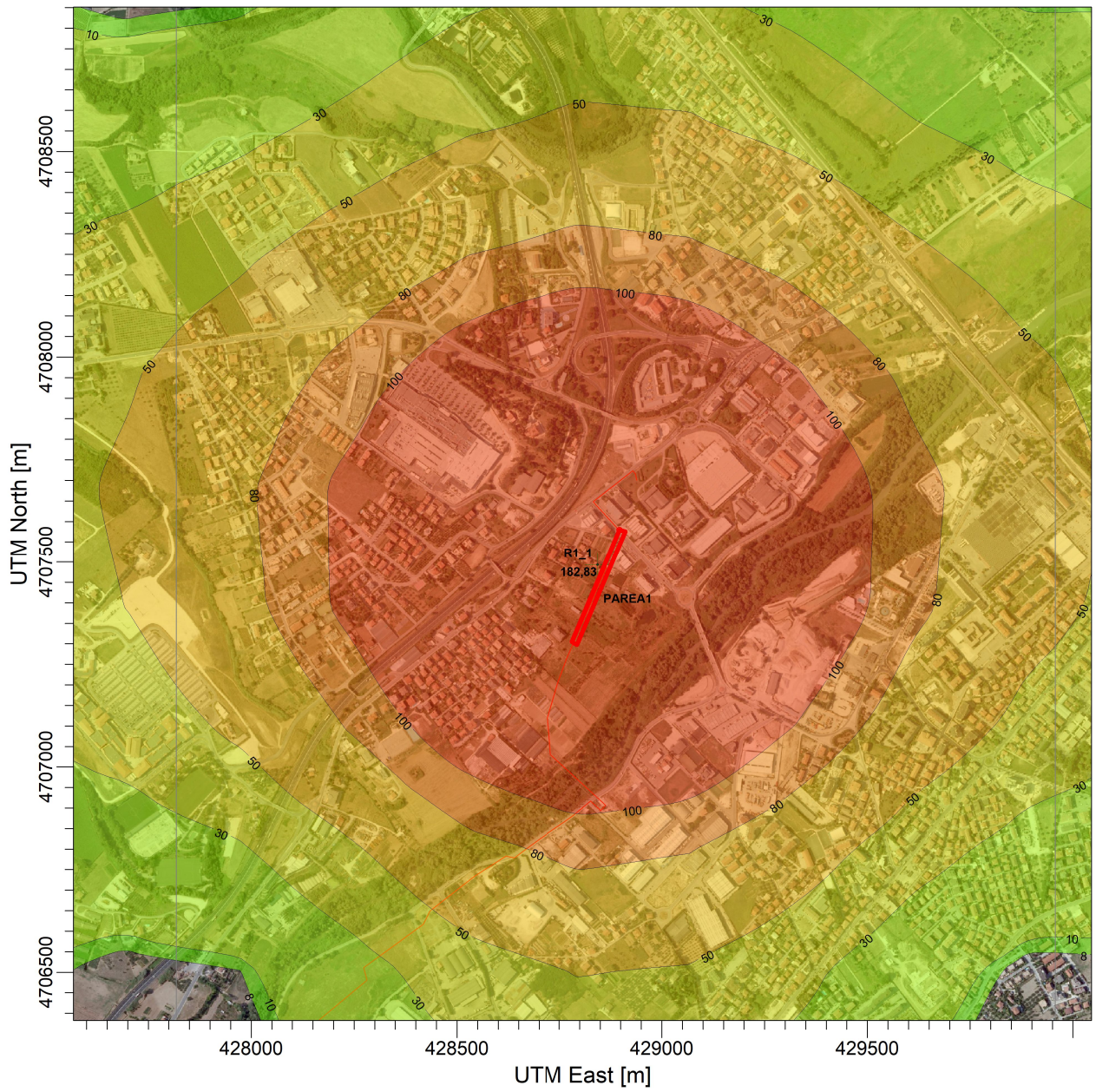


PROJECT TITLE:

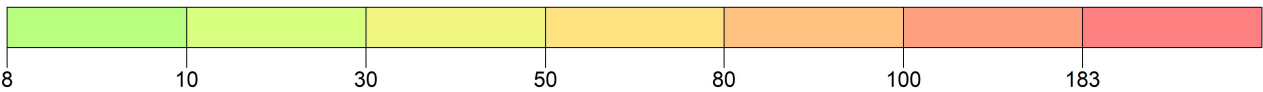
**Met. Città Sant'Angelo - Alanno**  
**Mappa NOx - Recettore R1- Città Sant'Angelo**




PLOT FILE OF HIGH 1ST HIGH 1-HR VALUES FOR SOURCE GROUP: SRCGP1

ug/m<sup>3</sup>

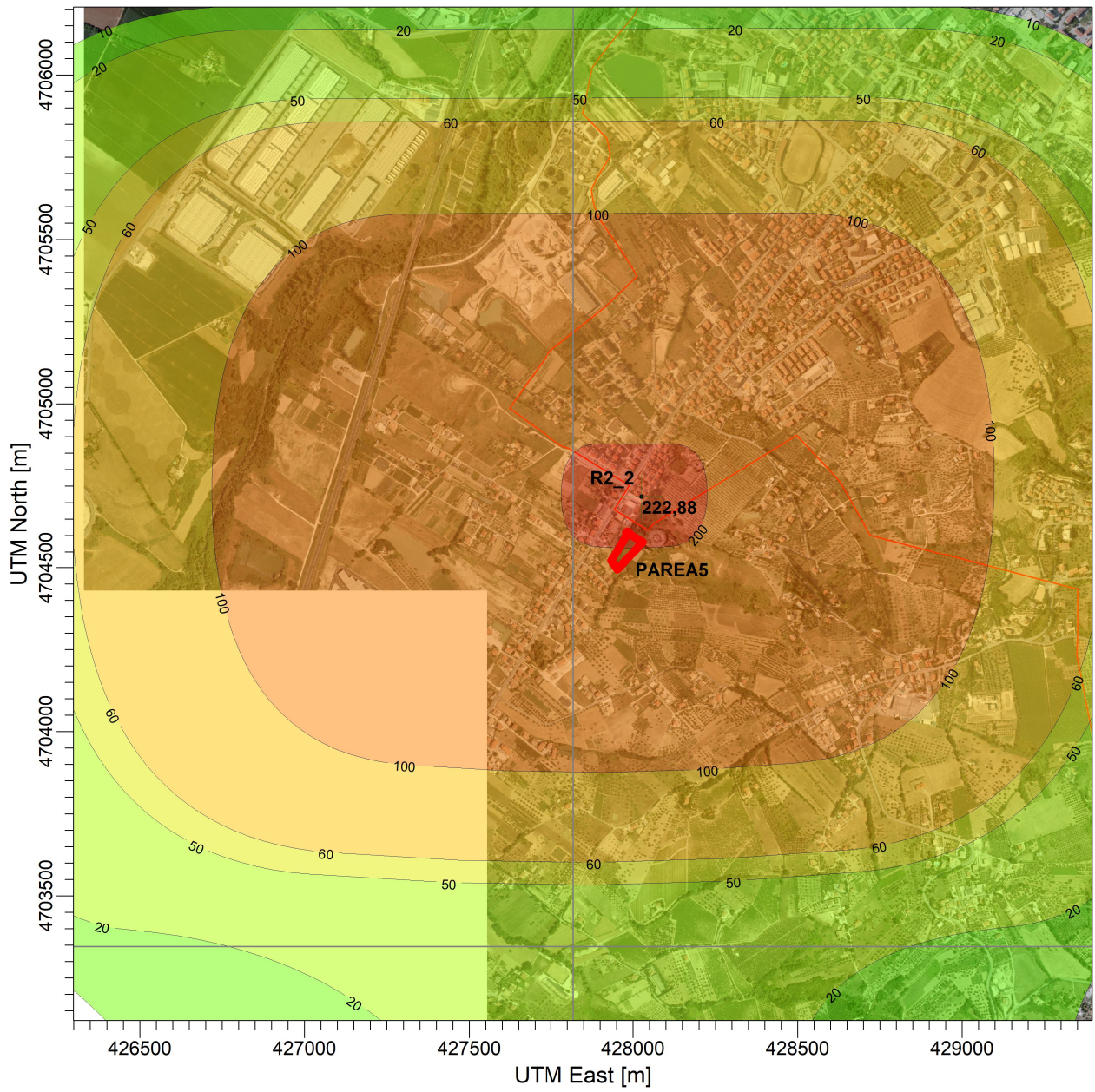
Max: 183 [ug/m<sup>3</sup>] at (428843,78, 4707493,36)



COMMENTS:	SOURCES: <b>6</b>	COMPANY NAME: <b>Enereco SpA</b>
	RECEPTORS: <b>326</b>	MODELER: <b>FA</b>
	OUTPUT TYPE: <b>Concentration</b>	SCALE: 1:16.000 0  0,5 km
	MAX: <b>183 ug/m<sup>3</sup></b>	DATE: <b>25/01/2022</b>

PROJECT TITLE:

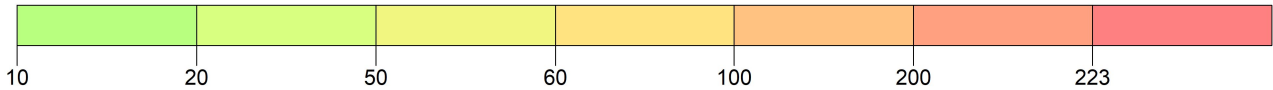
**Met. Città Sant'Angelo - Alanno**  
**Mappa NOx - Recettore R2- Montesilvano**



PLOT FILE OF 99.80TH PERCENTILE 1-HR VALUES FOR SOURCE GROUP: SRCGP1

ug/m<sup>3</sup>

Max: 223 [ug/m<sup>3</sup>] at (428025,20, 4704718,29)



COMMENTS:

SOURCES:

**6**

COMPANY NAME:

**Enereco SpA**

RECEPTORS:

**326**

MODELER:

**FA**

OUTPUT TYPE:

**Concentration**

SCALE:

1:20.000

0 0,5 km

MAX:

**223 ug/m<sup>3</sup>**

DATE:

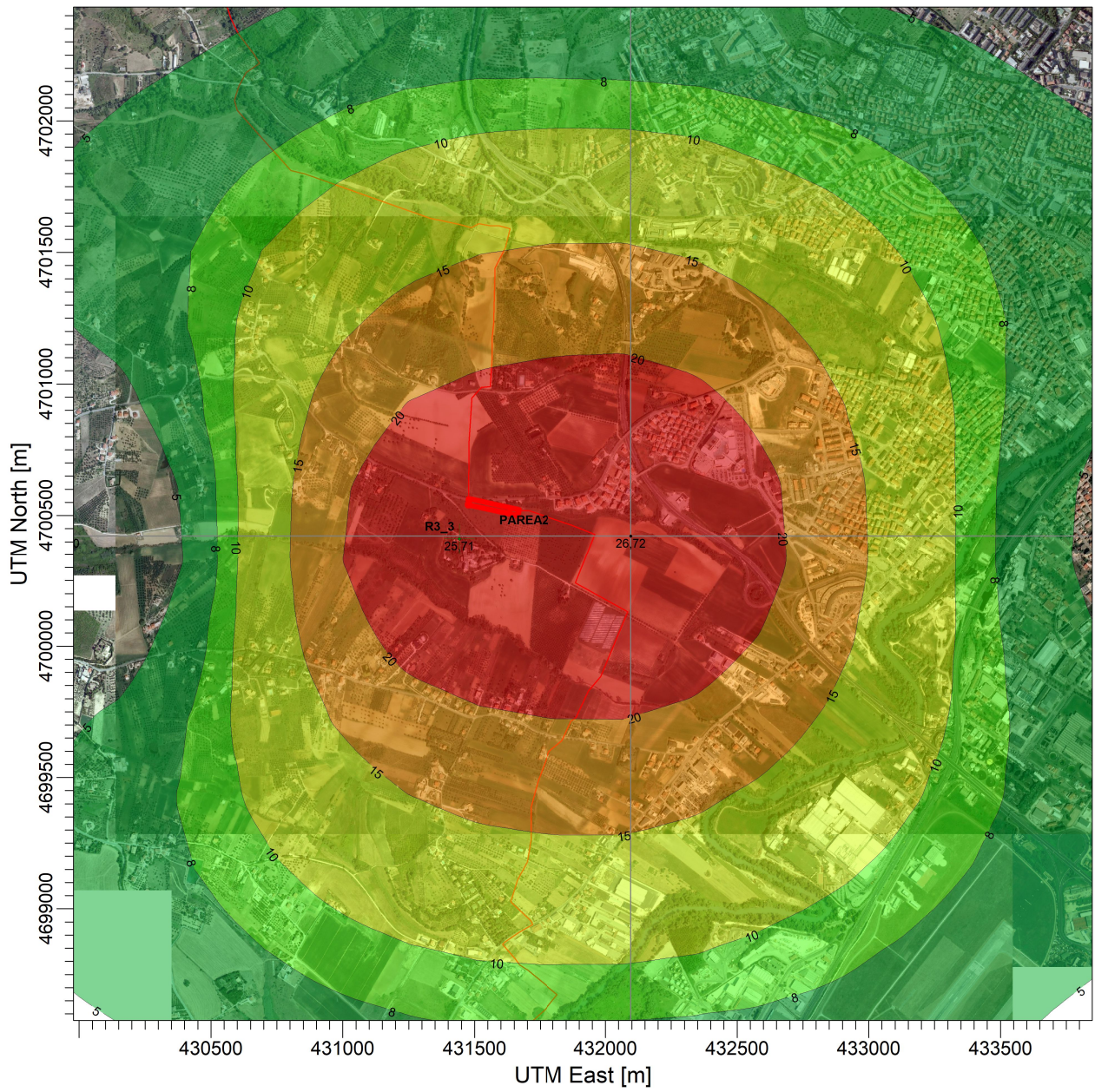
**25/01/2022**

PROJECT NO.:

**P20IT04025**

PROJECT TITLE:

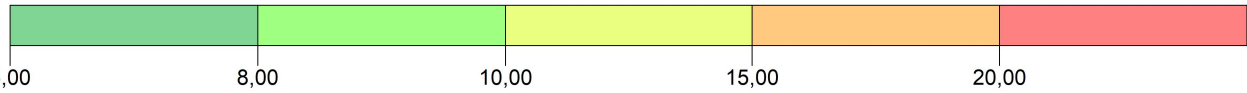
**Met. Città Sant'Angelo - Alanno**  
**Mappa NOx - Recettore R3- Spoltore**



PLOT FILE OF 99.80TH PERCENTILE 1-HR VALUES FOR SOURCE GROUP: SRCGP1

ug/m<sup>3</sup>

Max: 26,72 [ug/m<sup>3</sup>] at (432096,21, 4700421,67)



COMMENTS:

SOURCES:

**6**

COMPANY NAME:

**Enereco SpA**

RECEPTORS:

**326**

MODELER:

**FA**

OUTPUT TYPE:

**Concentration**

SCALE:

1:25.000

0 0,5 km

MAX:

**26,72 ug/m<sup>3</sup>**

DATE:

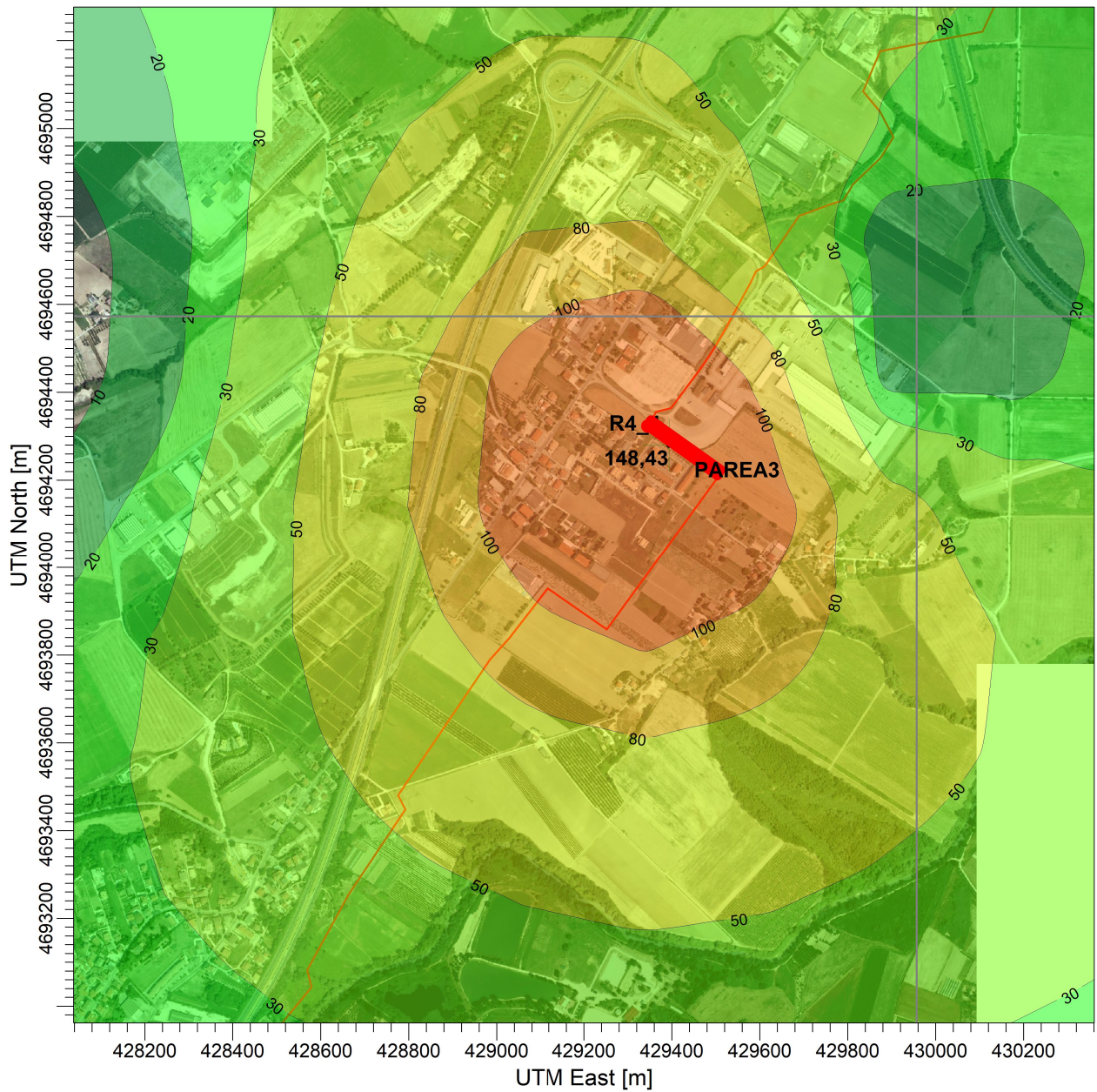
**25/01/2022**

PROJECT NO.:

**P20IT04025**

PROJECT TITLE:

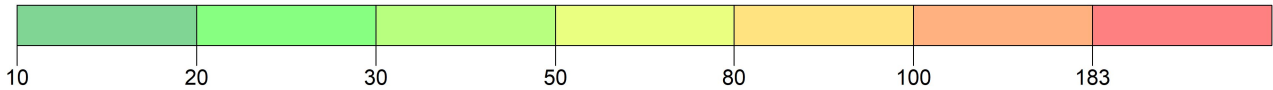
**Met. Città Sant'Angelo - Alanno**  
**Mappa NOx - Recettore R4- Cepagatti**



PLOT FILE OF HIGH 1ST HIGH 1-HR VALUES FOR SOURCE GROUP: SRCGP1

ug/m<sup>3</sup>

Max: 148 [ug/m<sup>3</sup>] at (429393,75, 4694279,23)



COMMENTS:

SOURCES:

**6**

COMPANY NAME:

**Enereco SpA**

RECEPTORS:

**326**

MODELER:

**FA**

OUTPUT TYPE:

**Concentration**

SCALE:

1:15.000



MAX:

**148 ug/m<sup>3</sup>**

DATE:

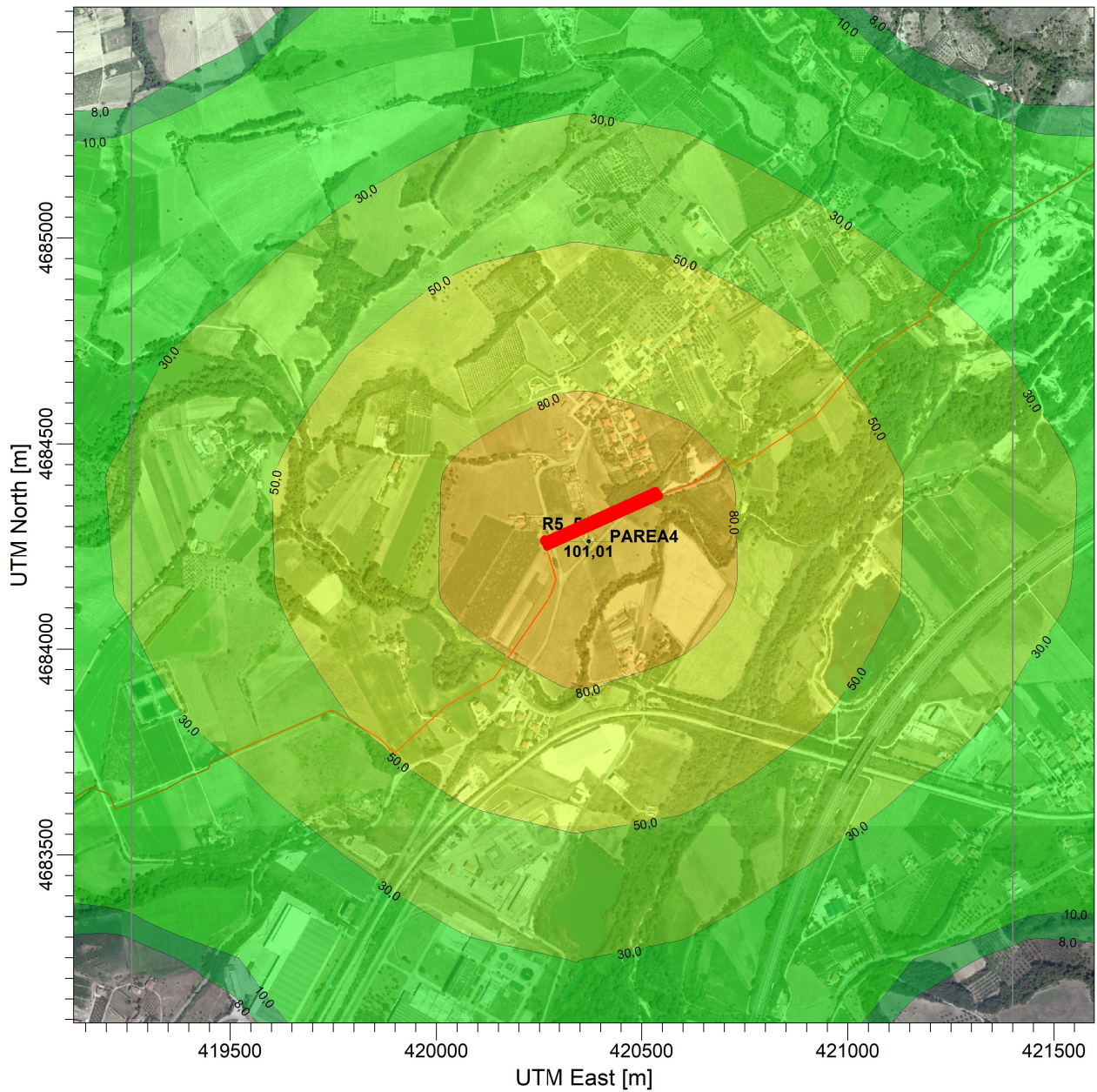
**25/01/2022**

PROJECT NO.:

**P20IT04025**

PROJECT TITLE:

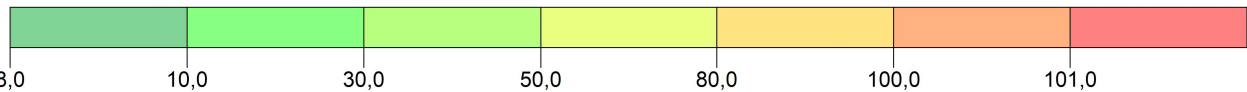
**Met. Città Sant'Angelo - Alanno**  
**Mappa NOx - Recettore R5- Rosciano**



PLOT FILE OF 99.80TH PERCENTILE 1-HR VALUES FOR SOURCE GROUP: SRCGP1

ug/m<sup>3</sup>

Max: 101,0 [ug/m<sup>3</sup>] at (420371,24, 4684264,13)



COMMENTS:

SOURCES:

**6**

COMPANY NAME:

**Enereco SpA**

RECEPTORS:

**326**

MODELER:

**FA**

OUTPUT TYPE:

**Concentration**

SCALE:

1:16.000



MAX:

**101,0 ug/m<sup>3</sup>**

DATE:

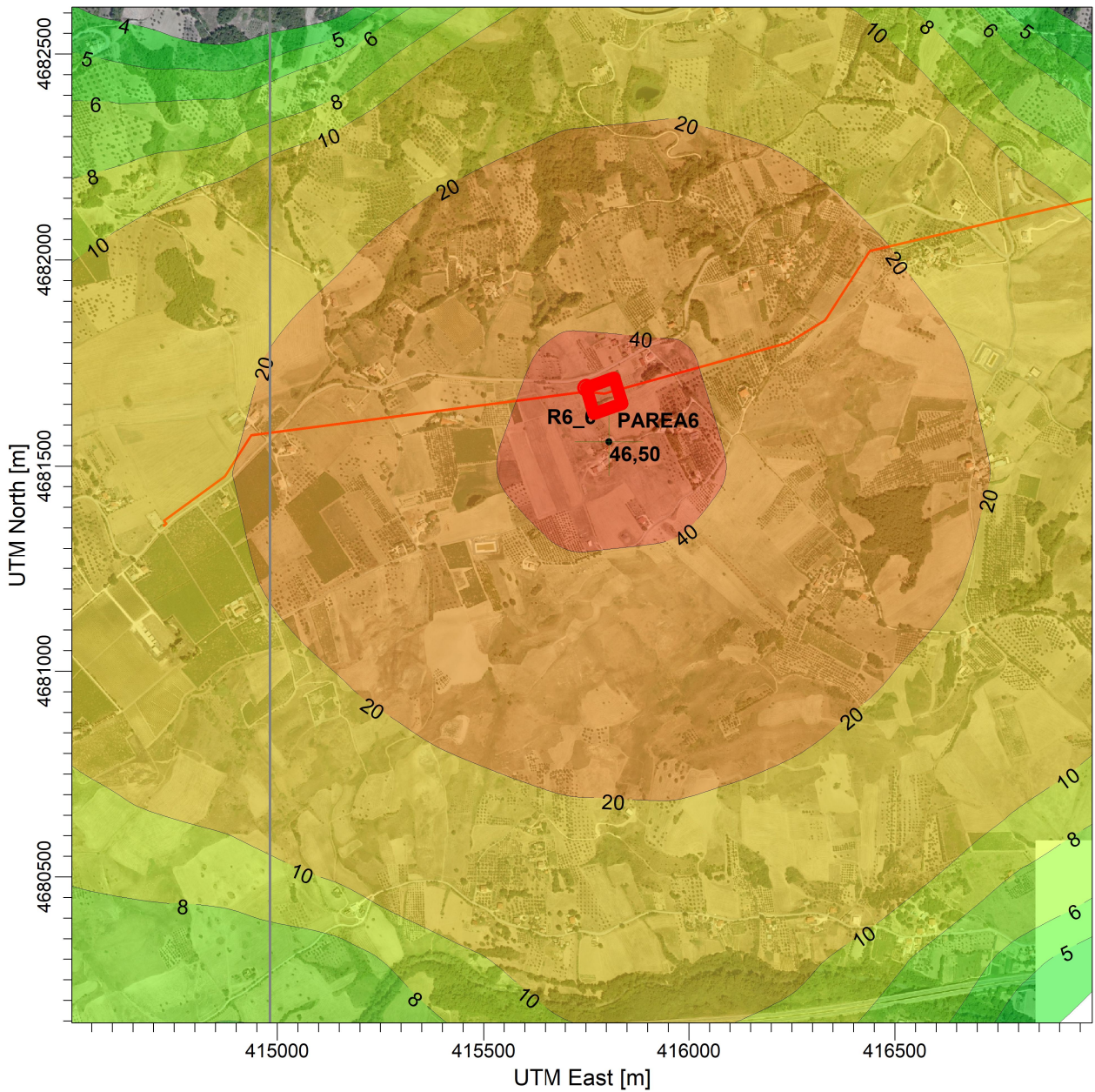
**25/01/2022**

PROJECT NO.:

**P20IT04025**

PROJECT TITLE:

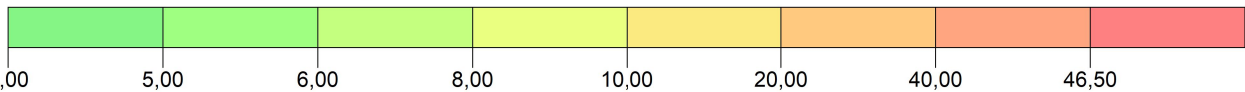
**Met. Città Sant'Angelo - Alanno**  
**Mappa NOx - Recettore R6- Alanno**



PLOT FILE OF 99.80TH PERCENTILE 1-HR VALUES FOR SOURCE GROUP: SRCGP1

ug/m<sup>3</sup>

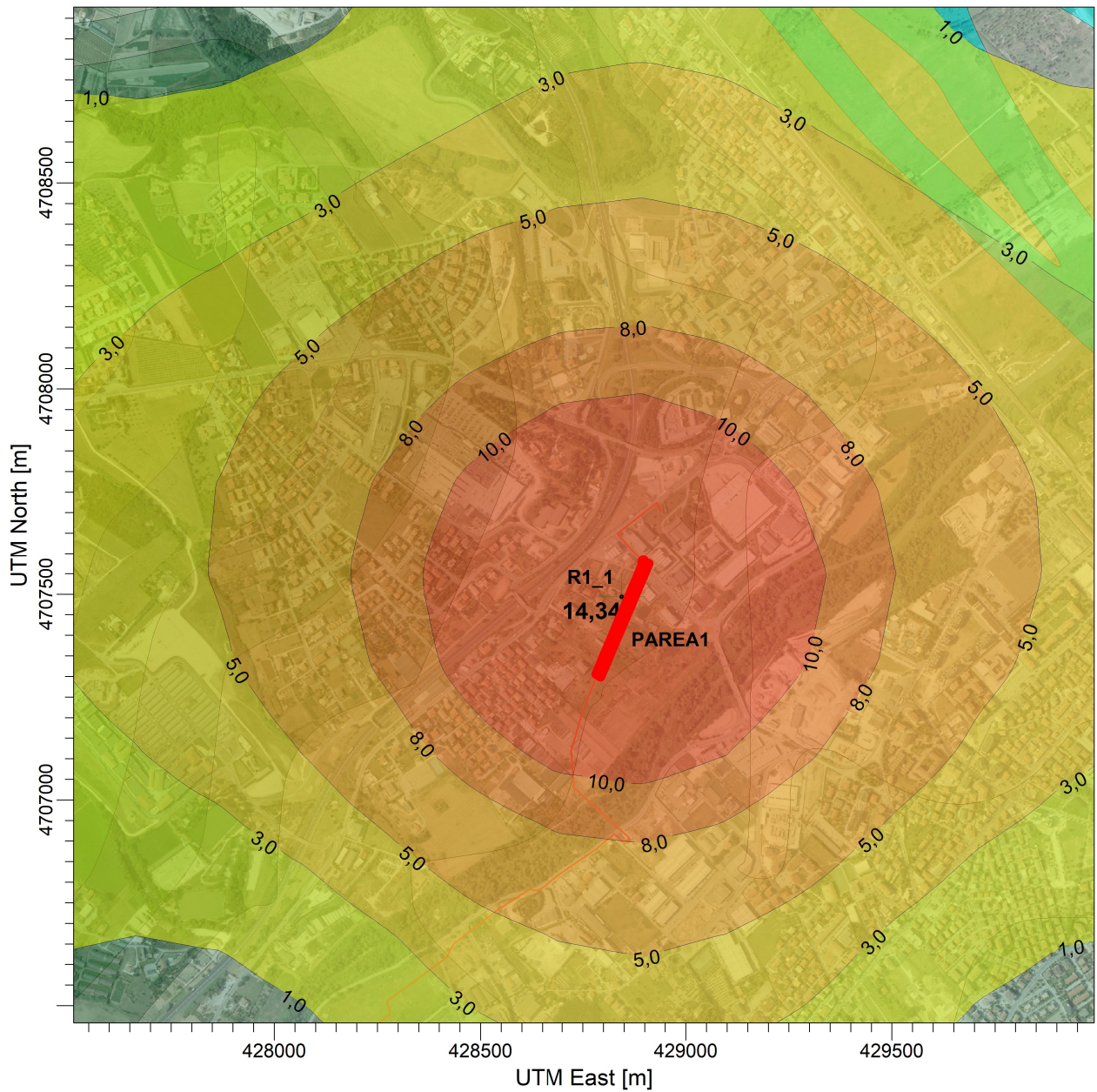
Max: 46,50 [ug/m<sup>3</sup>] at (415805,54, 4681559,12)



COMMENTS:	SOURCES: <b>6</b>	COMPANY NAME: <b>Enereco SpA</b>	
	RECEPTORS: <b>326</b>	MODELER: <b>FA</b>	
	OUTPUT TYPE: <b>Concentration</b>	SCALE: 1:16.000	
	MAX: <b>46,50 ug/m<sup>3</sup></b>	DATE: <b>25/01/2022</b>	PROJECT NO.: <b>P20IT04025</b>

PROJECT TITLE:

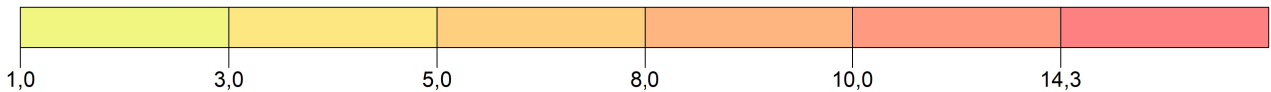
**Met. Città Sant'Angelo - Alanno**  
**Mappa PM10 - Recettore R1- Città Sant'Angelo**



PLOT FILE OF 90.41TH PERCENTILE 24-HR VALUES FOR SOURCE GROUP: SRCGP1

ug/m<sup>3</sup>

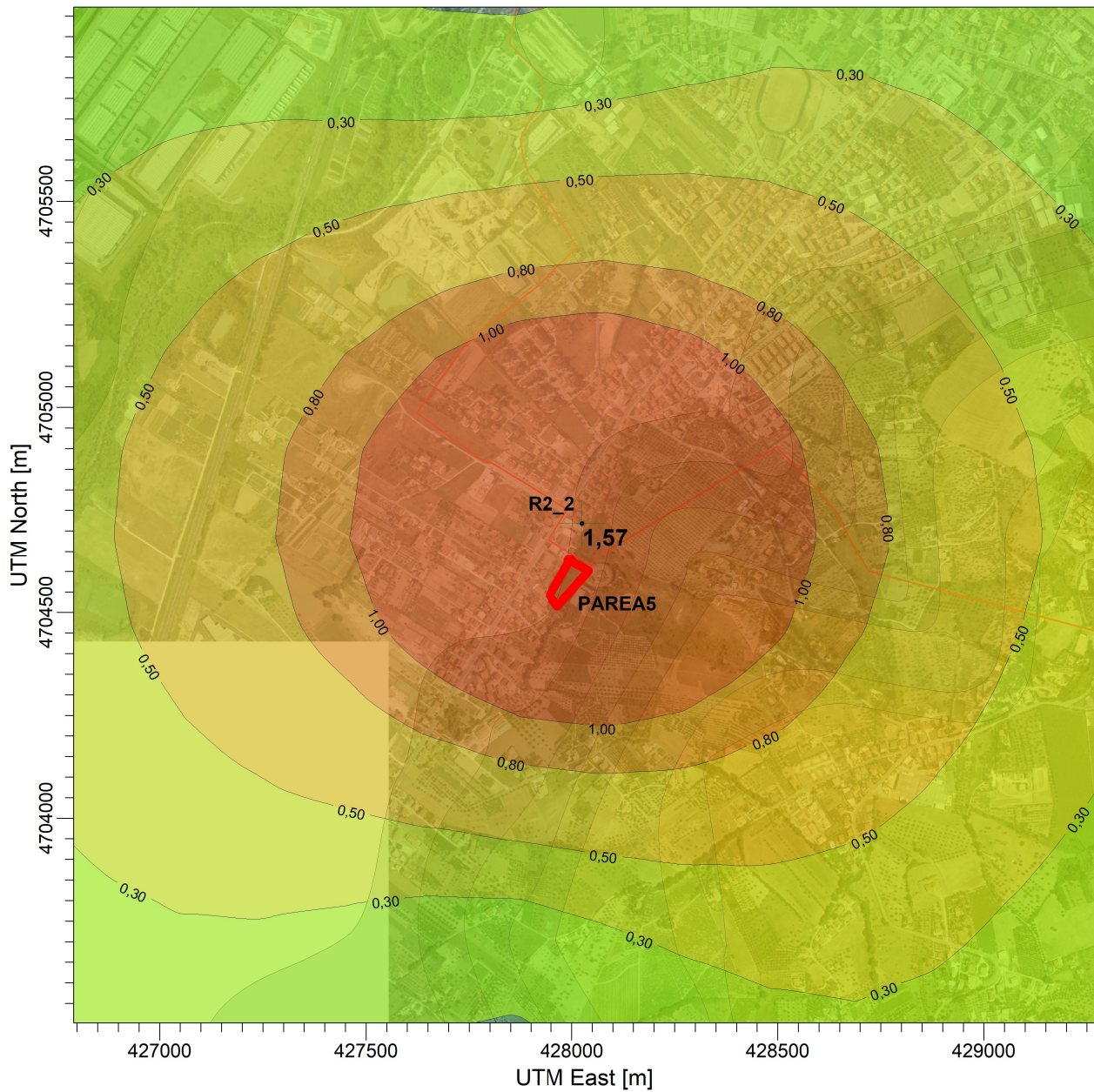
Max: 14,3 [ug/m<sup>3</sup>] at (428843,78, 4707493,36)



COMMENTS:	SOURCES: <b>6</b>	COMPANY NAME: <b>Enereco SpA</b>	
	RECEPTORS: <b>326</b>	MODELER: <b>FA</b>	
	OUTPUT TYPE: <b>Concentration</b>	SCALE: 1:16.000	
	MAX: <b>14,3 ug/m<sup>3</sup></b>	DATE: <b>17/01/2022</b>	PROJECT NO.: <b>P20IT04025</b>

PROJECT TITLE:

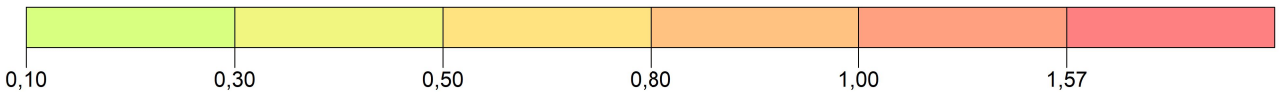
**Met. Città Sant'Angelo - Alanno**  
**Mappa PM10 - Recettore R2- Montesilvano**



PLOT FILE OF 90.41TH PERCENTILE 24-HR VALUES FOR SOURCE GROUP: SRCGP1

ug/m<sup>3</sup>

Max: 1,57 [ug/m<sup>3</sup>] at (428025,20, 4704718,29)

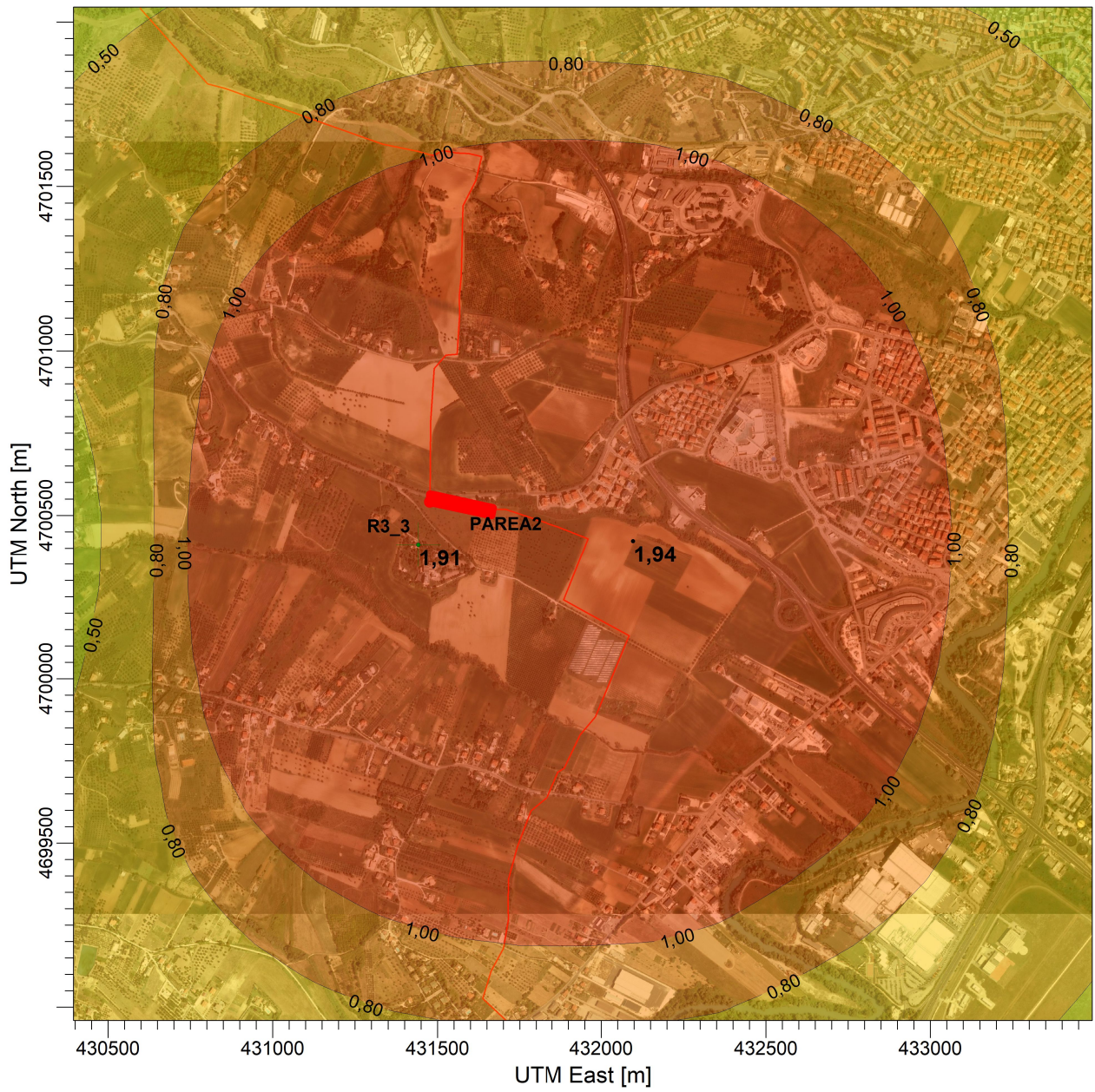


COMMENTS:	SOURCES: <b>6</b>	COMPANY NAME: <b>Enereco SpA</b>	
	RECEPTORS: <b>326</b>	MODELER: <b>FA</b>	
	OUTPUT TYPE: <b>Concentration</b>	SCALE: 1:16.000	
	MAX: <b>1,57 ug/m<sup>3</sup></b>	DATE: <b>17/01/2022</b>	PROJECT NO.: <b>P20IT04025</b>



PROJECT TITLE:

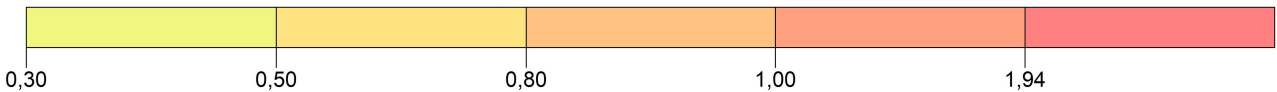
**Met. Città Sant'Angelo - Alanno**  
**Mappa PM10 - Recettore R3- Spoltore**



PLOT FILE OF 90.41TH PERCENTILE 24-HR VALUES FOR SOURCE GROUP: SRCGP1

ug/m<sup>3</sup>

Max: 1,94 [ug/m<sup>3</sup>] at (432096,21, 4700421,67)



COMMENTS:

SOURCES:

**6**

COMPANY NAME:

**Enereco SpA**

RECEPTORS:

**326**

MODELER:

**FA**

OUTPUT TYPE:

**Concentration**

SCALE:

1:20.000



MAX:

**1,94 ug/m<sup>3</sup>**

DATE:

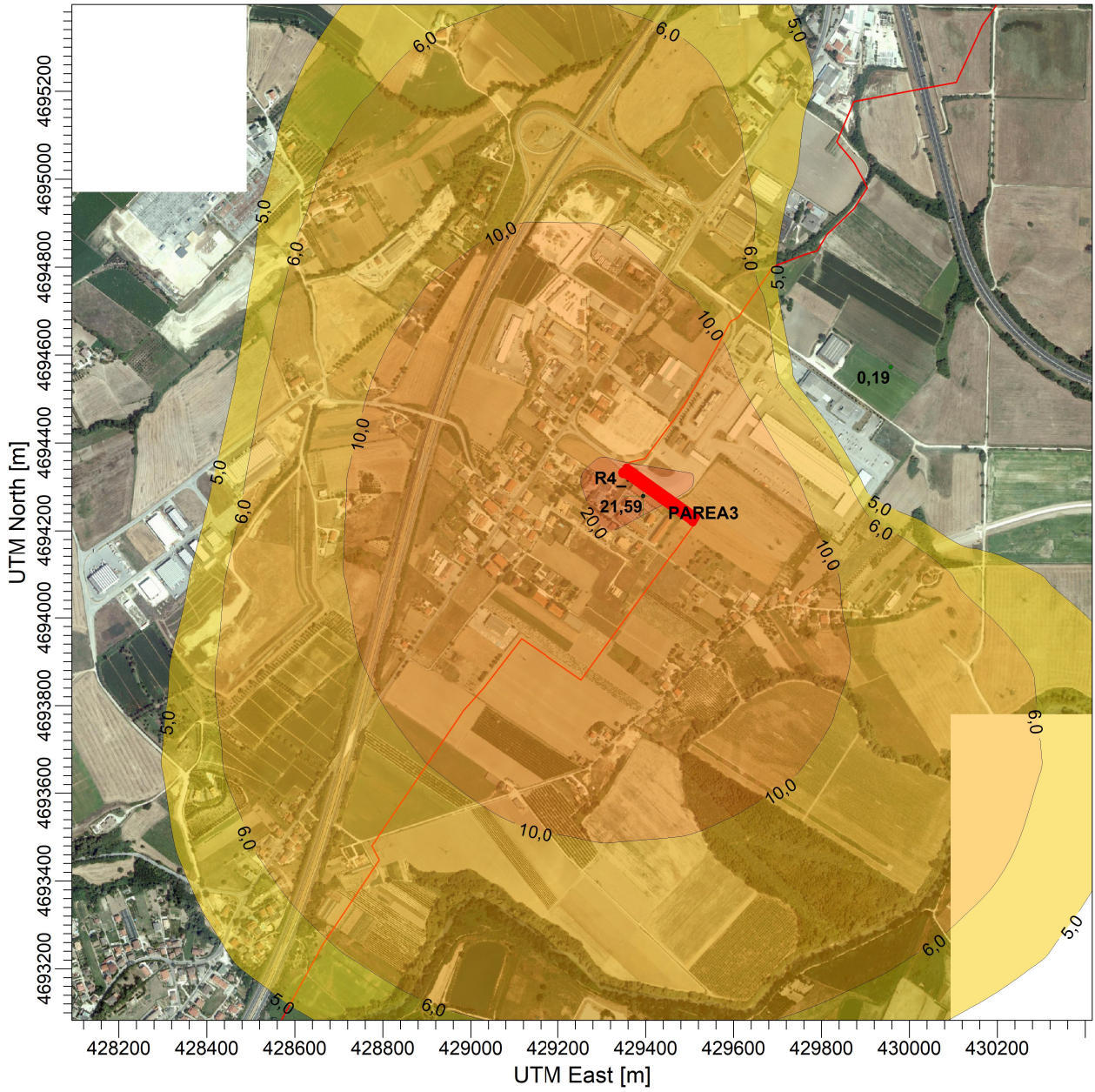
**17/01/2022**

PROJECT NO.:

**P20IT04025**

PROJECT TITLE:

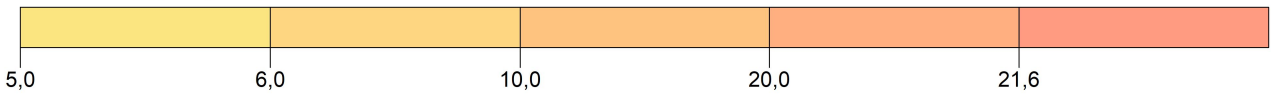
**Met. Città Sant'Angelo - Alanno**  
**Mappa PM10 - Recettore R4- Cepagatti**



PLOT FILE OF 90.41TH PERCENTILE 24-HR VALUES FOR SOURCE GROUP: SRCGP1

ug/m<sup>3</sup>

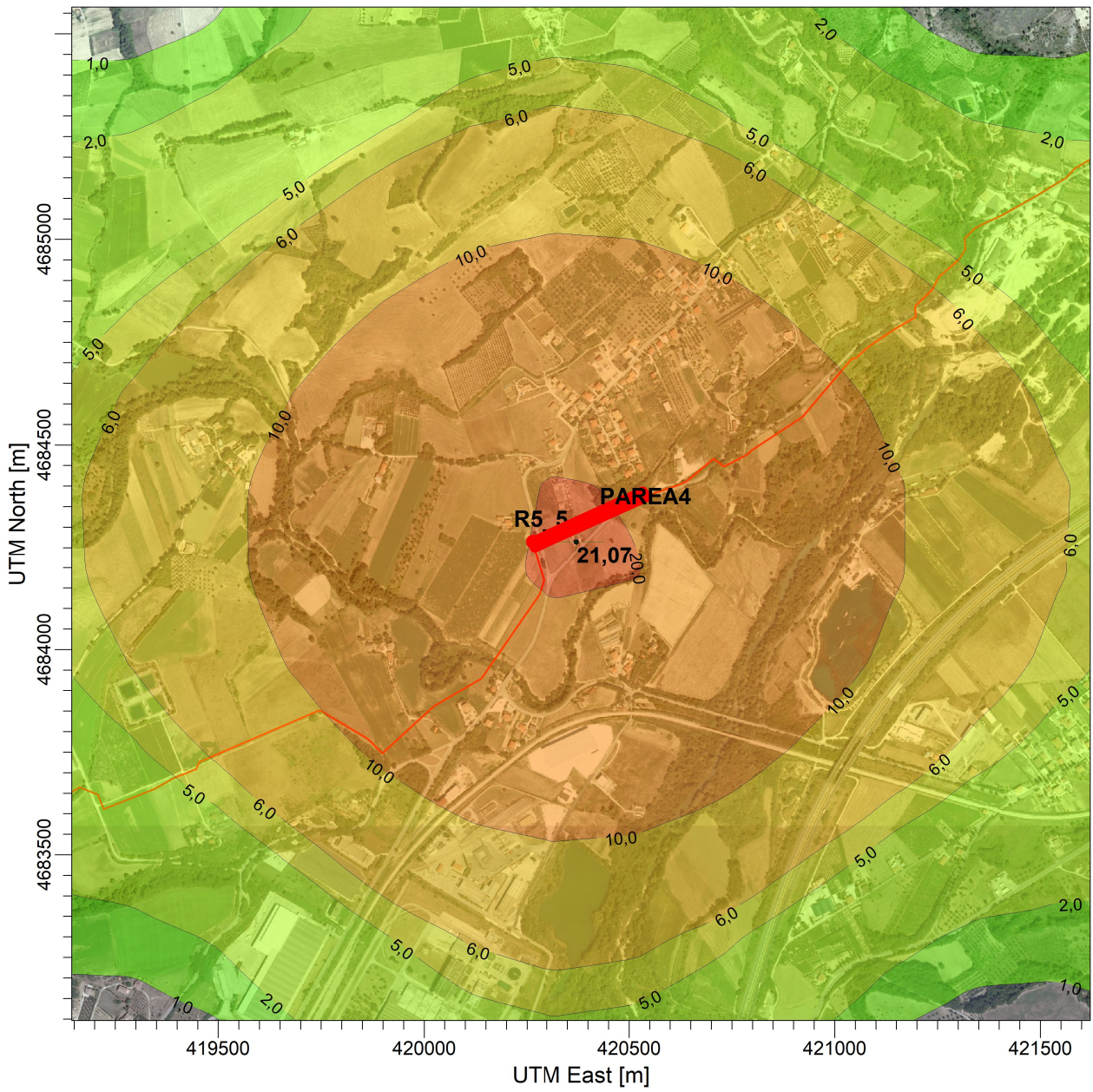
Max: 21,6 [ug/m<sup>3</sup>] at (429393,75, 4694279,23)



COMMENTS:	SOURCES: <b>6</b>	COMPANY NAME: <b>Enereco SpA</b>	
	RECEPTORS: <b>326</b>	MODELER: <b>FA</b>	
	OUTPUT TYPE: <b>Concentration</b>	SCALE: 1:15.000	
	MAX: <b>21,6 ug/m<sup>3</sup></b>	DATE: <b>17/01/2022</b>	

PROJECT TITLE:

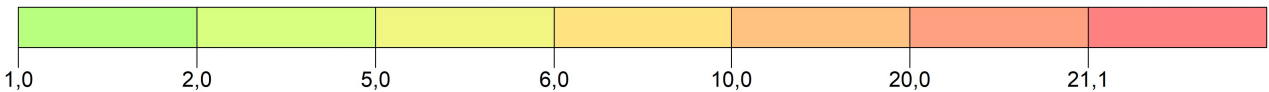
**Met. Città Sant'Angelo - Alanno**  
**Mappa PM10 - Recettore R5- Rosciano**



PLOT FILE OF 90.41TH PERCENTILE 24-HR VALUES FOR SOURCE GROUP: SRCGP1

ug/m<sup>3</sup>

Max: 21,1 [ug/m<sup>3</sup>] at (420371,24, 4684264,13)



COMMENTS:

SOURCES:

**6**

COMPANY NAME:

**Enereco SpA**

RECEPTORS:

**326**

MODELER:

**FA**

OUTPUT TYPE:

**Concentration**

SCALE:

1:16.000



MAX:

**21,1 ug/m<sup>3</sup>**

DATE:

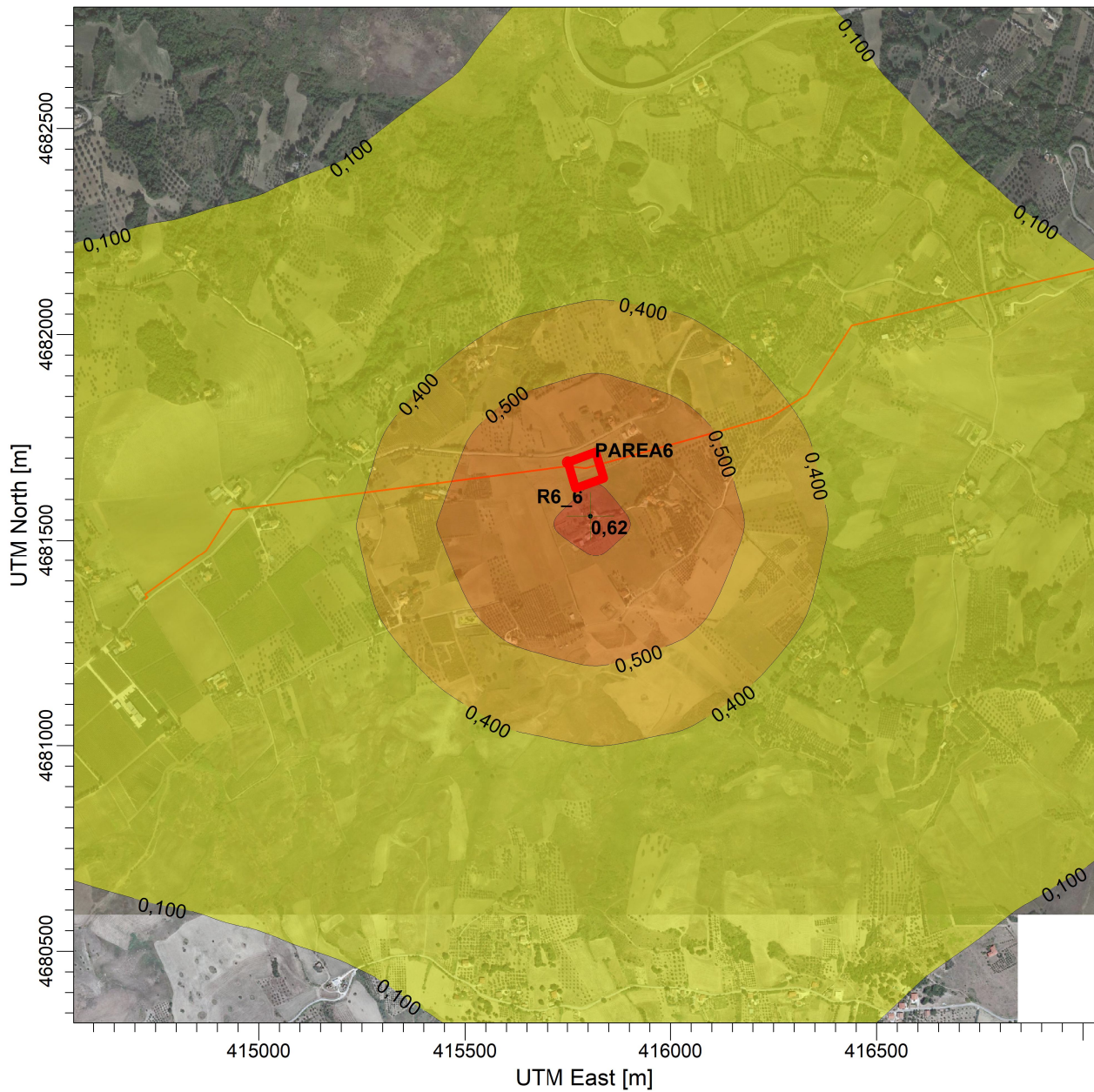
**17/01/2022**

PROJECT NO.:

**P20IT04025**

PROJECT TITLE:

**Met. Città Sant'Angelo - Alanno**  
**Mappa PM10 - Recettore R6-Alanno**



PLOT FILE OF 90.41TH PERCENTILE 24-HR VALUES FOR SOURCE GROUP: SRCGP1

ug/m<sup>3</sup>

Max: 0,621 [ug/m<sup>3</sup>] at (415805,54, 4681559,12)



COMMENTS:	SOURCES: <b>6</b>	COMPANY NAME: <b>Enereco SpA</b>	
	RECEPTORS: <b>326</b>	MODELER: <b>FA</b>	
	OUTPUT TYPE: <b>Concentration</b>	SCALE: 1:16.000	
	MAX: <b>0,621 ug/m<sup>3</sup></b>	DATE: <b>17/01/2022</b>	PROJECT NO.: <b>P20IT04025</b>