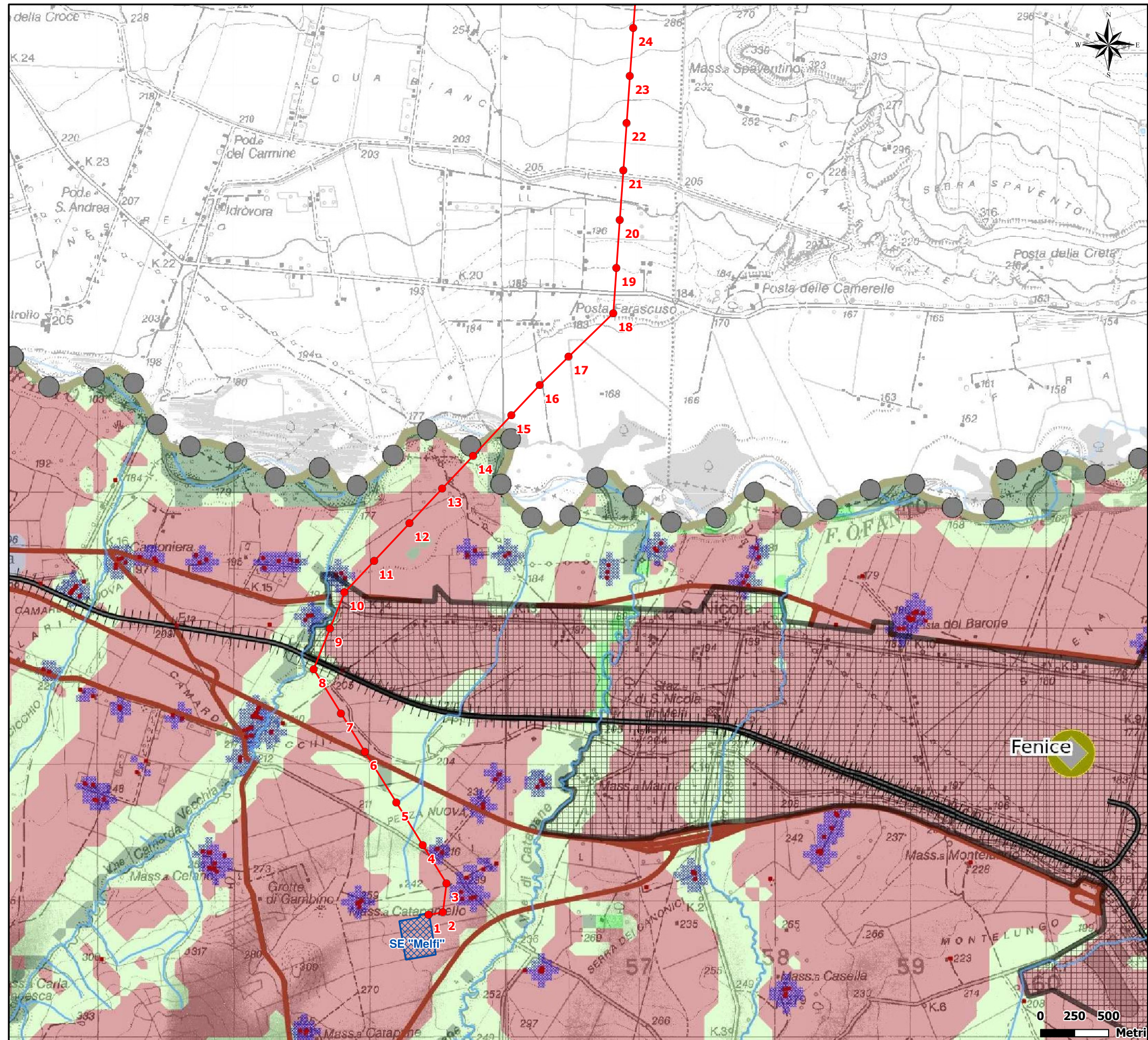






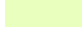
Figura 2.2.5.1d Estratto Regimi di intervento - PSP Provincia di Potenza




**LEGENDA**



-  Elettrodotto AT 150 kV "Melfi-Ascoli Satriano" in progetto
-  Stazione Elettrica esistente

**Regimi della conservazione**

-  C1
-  C2
-  C3

**Regimi del nuovo impianto**

-  NI1

-  Aree produttive
-  Confine regionale

