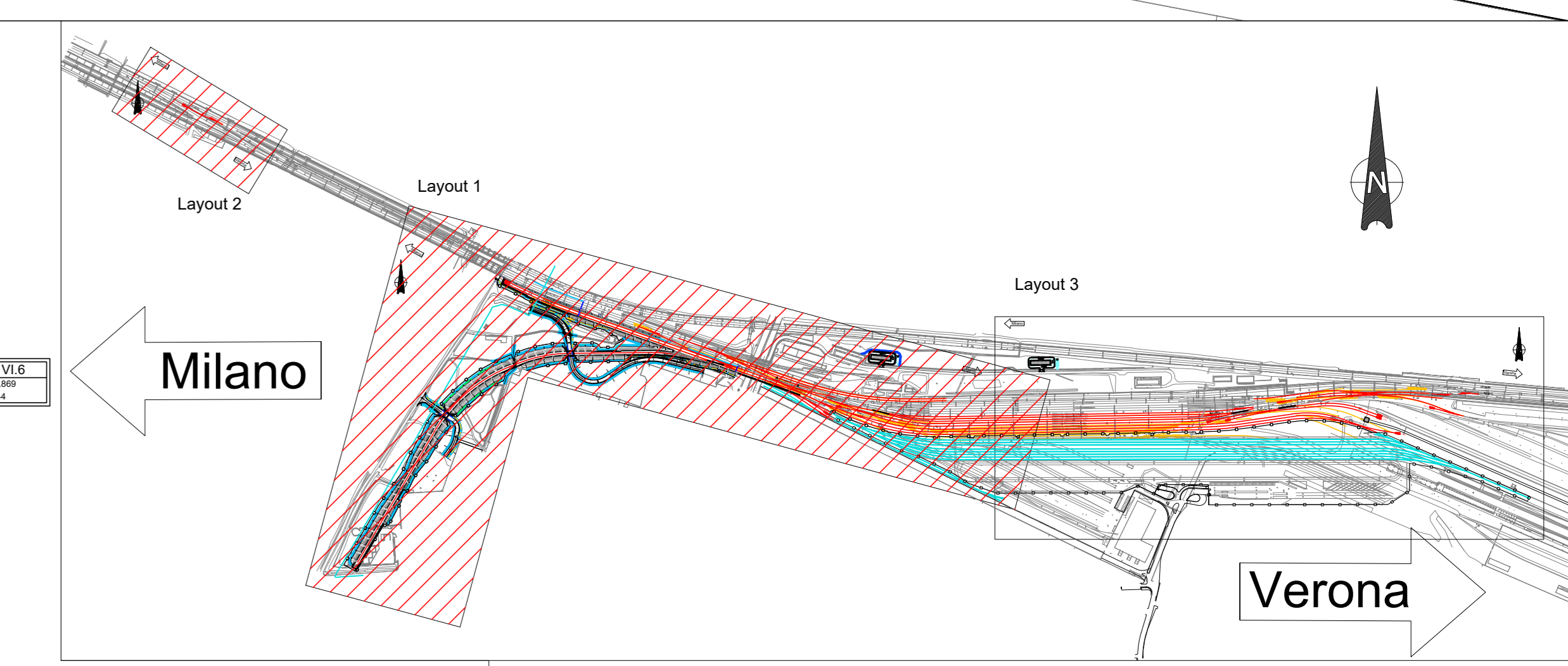


Binario / Area	Coordinate (X, Y)	Altitudine (m)	Area (m²)	Perimetro (m)	Alt. Relativa (m)	Perim. Rel. (m)
Binario AV1	1101101.50	101.181500	143.215	148.2652	0.000000	148.2652
Binario AV2	1101101.50	101.181500	143.215	148.2652	0.000000	148.2652
Binario AV3	1101101.50	101.181500	143.215	148.2652	0.000000	148.2652
Binario AV4	1101101.50	101.181500	143.215	148.2652	0.000000	148.2652
Binario AV5	1101101.50	101.181500	143.215	148.2652	0.000000	148.2652
Binario AV6	1101101.50	101.181500	143.215	148.2652	0.000000	148.2652
Binario AV7	1101101.50	101.181500	143.215	148.2652	0.000000	148.2652
Binario AV8	1101101.50	101.181500	143.215	148.2652	0.000000	148.2652
Binario AV9	1101101.50	101.181500	143.215	148.2652	0.000000	148.2652
Binario AV10	1101101.50	101.181500	143.215	148.2652	0.000000	148.2652
Binario AV11	1101101.50	101.181500	143.215	148.2652	0.000000	148.2652
Binario AV12	1101101.50	101.181500	143.215	148.2652	0.000000	148.2652
Binario AV13	1101101.50	101.181500	143.215	148.2652	0.000000	148.2652
Binario AV14	1101101.50	101.181500	143.215	148.2652	0.000000	148.2652
Binario AV15	1101101.50	101.181500	143.215	148.2652	0.000000	148.2652
Binario AV16	1101101.50	101.181500	143.215	148.2652	0.000000	148.2652
Binario AV17	1101101.50	101.181500	143.215	148.2652	0.000000	148.2652
Binario AV18	1101101.50	101.181500	143.215	148.2652	0.000000	148.2652
Binario AV19	1101101.50	101.181500	143.215	148.2652	0.000000	148.2652
Binario AV20	1101101.50	101.181500	143.215	148.2652	0.000000	148.2652
Binario AV21	1101101.50	101.181500	143.215	148.2652	0.000000	148.2652
Binario AV22	1101101.50	101.181500	143.215	148.2652	0.000000	148.2652
Binario AV23	1101101.50	101.181500	143.215	148.2652	0.000000	148.2652
Binario AV24	1101101.50	101.181500	143.215	148.2652	0.000000	148.2652
Binario AV25	1101101.50	101.181500	143.215	148.2652	0.000000	148.2652
Binario AV26	1101101.50	101.181500	143.215	148.2652	0.000000	148.2652
Binario AV27	1101101.50	101.181500	143.215	148.2652	0.000000	148.2652
Binario AV28	1101101.50	101.181500	143.215	148.2652	0.000000	148.2652
Binario AV29	1101101.50	101.181500	143.215	148.2652	0.000000	148.2652
Binario AV30	1101101.50	101.181500	143.215	148.2652	0.000000	148.2652
Binario AV31	1101101.50	101.181500	143.215	148.2652	0.000000	148.2652
Binario AV32	1101101.50	101.181500	143.215	148.2652	0.000000	148.2652
Binario AV33	1101101.50	101.181500	143.215	148.2652	0.000000	148.2652
Binario AV34	1101101.50	101.181500	143.215	148.2652	0.000000	148.2652
Binario AV35	1101101.50	101.181500	143.215	148.2652	0.000000	148.2652
Binario AV36	1101101.50	101.181500	143.215	148.2652	0.000000	148.2652
Binario AV37	1101101.50	101.181500	143.215	148.2652	0.000000	148.2652
Binario AV38	1101101.50	101.181500	143.215	148.2652	0.000000	148.2652
Binario AV39	1101101.50	101.181500	143.215	148.2652	0.000000	148.2652
Binario AV40	1101101.50	101.181500	143.215	148.2652	0.000000	148.2652
Binario AV41	1101101.50	101.181500	143.215	148.2652	0.000000	148.2652
Binario AV42	1101101.50	101.181500	143.215	148.2652	0.000000	148.2652
Binario AV43	1101101.50	101.181500	143.215	148.2652	0.000000	148.2652
Binario AV44	1101101.50	101.181500	143.215	148.2652	0.000000	148.2652
Binario AV45	1101101.50	101.181500	143.215	148.2652	0.000000	148.2652
Binario AV46	1101101.50	101.181500	143.215	148.2652	0.000000	148.2652
Binario AV47	1101101.50	101.181500	143.215	148.2652	0.000000	148.2652
Binario AV48	1101101.50	101.181500	143.215	148.2652	0.000000	148.2652
Binario AV49	1101101.50	101.181500	143.215	148.2652	0.000000	148.2652
Binario AV50	1101101.50	101.181500	143.215	148.2652	0.000000	148.2652
Binario AV51	1101101.50	101.181500	143.215	148.2652	0.000000	148.2652
Binario AV52	1101101.50	101.181500	143.215	148.2652	0.000000	148.2652
Binario AV53	1101101.50	101.181500	143.215	148.2652	0.000000	148.2652
Binario AV54	1101101.50	101.181500	143.215	148.2652	0.000000	148.2652
Binario AV55	1101101.50	101.181500	143.215	148.2652	0.000000	148.2652
Binario AV56	1101101.50	101.181500	143.215	148.2652	0.000000	148.2652
Binario AV57	1101101.50	101.181500	143.215	148.2652	0.000000	148.2652
Binario AV58	1101101.50	101.181500	143.215	148.2652	0.000000	148.2652
Binario AV59	1101101.50	101.181500	143.215	148.2652	0.000000	148.2652
Binario AV60	1101101.50	101.181500	143.215	148.2652	0.000000	148.2652
Binario AV61	1101101.50	101.181500	143.215	148.2652	0.000000	148.2652
Binario AV62	1101101.50	101.181500	143.215	148.2652	0.000000	148.2652
Binario AV63	1101101.50	101.181500	143.215	148.2652	0.000000	148.2652
Binario AV64	1101101.50	101.181500	143.215	148.2652	0.000000	148.2652
Binario AV65	1101101.50	101.181500	143.215	148.2652	0.000000	148.2652
Binario AV66	1101101.50	101.181500	143.215	148.2652	0.000000	148.2652
Binario AV67	1101101.50	101.181500	143.215	148.2652	0.000000	148.2652
Binario AV68	1101101.50	101.181500	143.215	148.2652	0.000000	148.2652
Binario AV69	1101101.50	101.181500	143.215	148.2652	0.000000	148.2652
Binario AV70	1101101.50	101.181500	143.215	148.2652	0.000000	148.2652



LEGENDA

- BINARI DI PROGETTO (Red line)
- BINARI IN DEMOLIZIONE (Yellow line)
- BINARI ESISTENTI (Black line)

COMMITENTE: RFI **RETE FERROVIARIA ITALIANA** GRUPPO FERROVIE DELLO STATO ITALIANO

PROGETTAZIONE: **ITALFER** INFRASTRUTTURE FERROVIARIE

CUP: J84C19000370009

U.O. PROGETTAZIONE LINEE NODI E ARMAMENTO

PROGETTO DEFINITIVO

TRATTA A.V./A.C. MILANO-VERONA

NODO DI BRESCIA

POTENZIAMENTO INFRASTRUTTURALE DELLO SCALO DI BRESCIA

PLANIMETRIA DI PROGETTO Tav. 1/2

SCALA: 1:1000

COMMESSA: L01M03D13P70001001A

Rev.	Descrizione	Redatto	Data	Verificato	Data	Approvato	Data	Autorizzato Data
A	Essores Esecutive

File: IN1M10D13P70001001A.dwg n. Elab.: ...