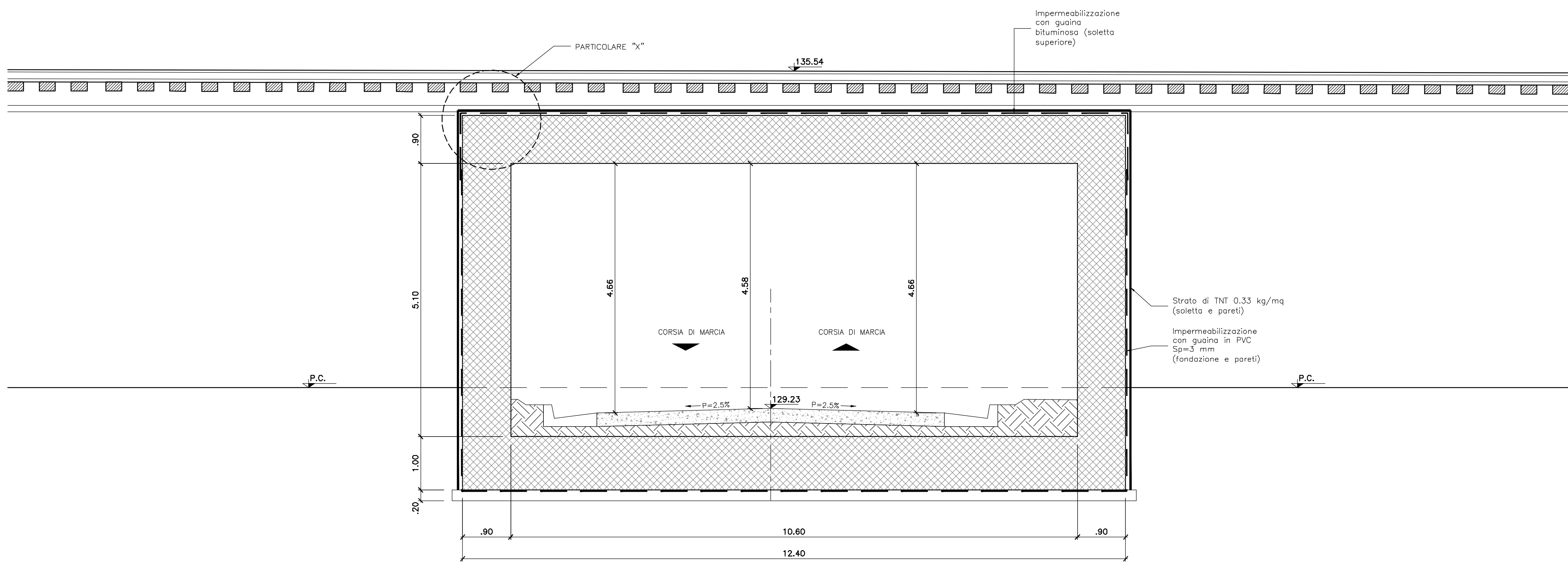


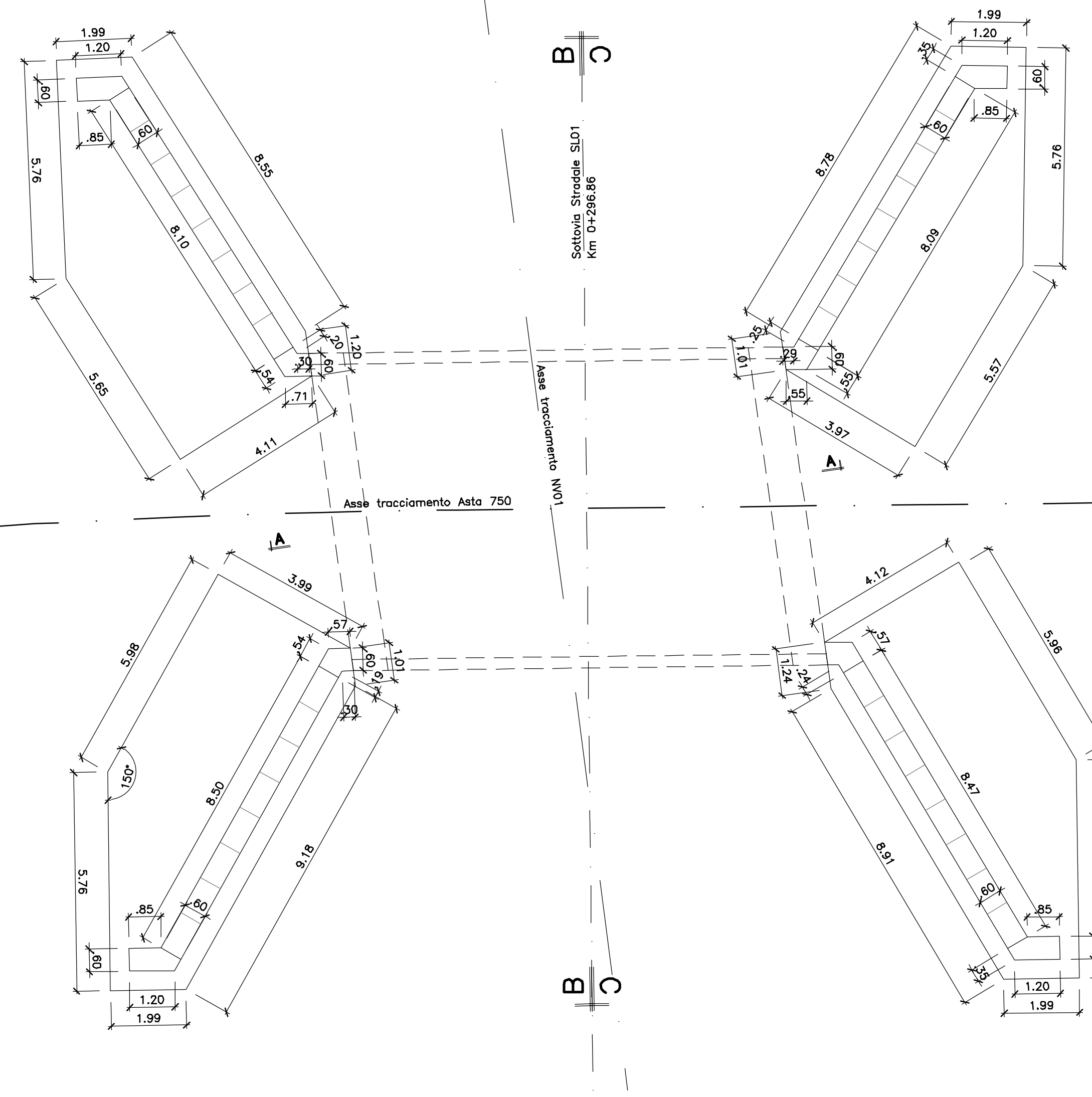
SEZIONE A-A

SCALA 1:50



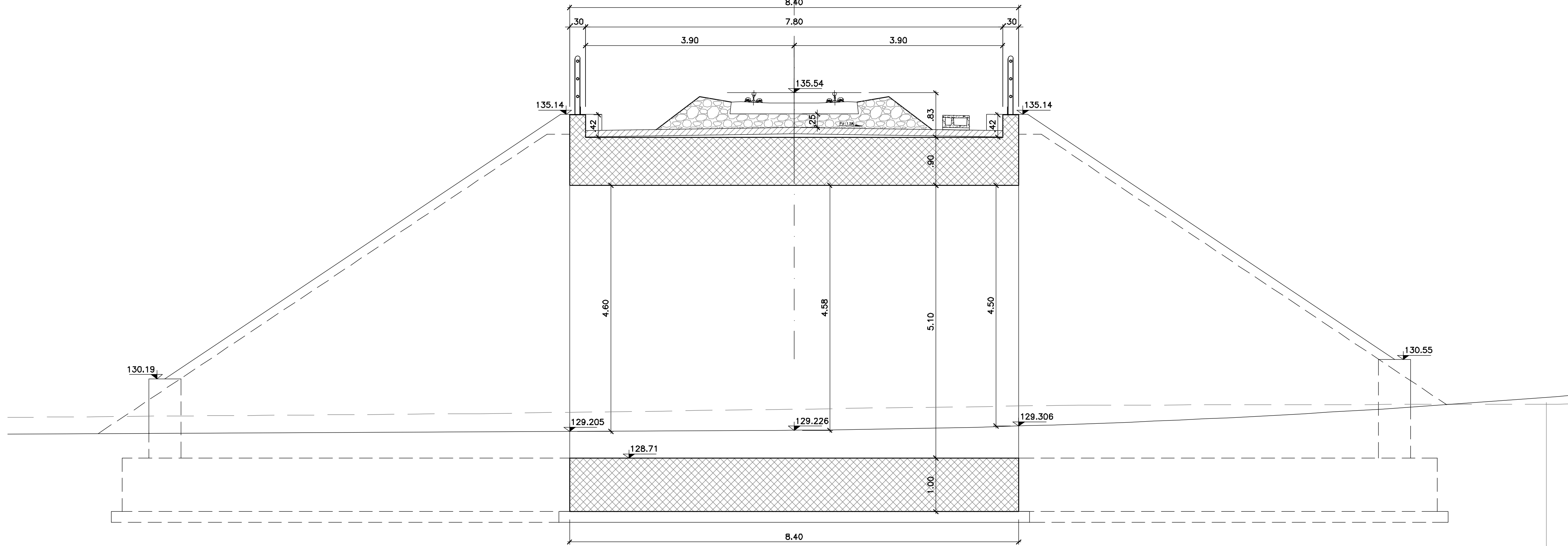
PIANTA MURI D'ALA

SCALA 1:100



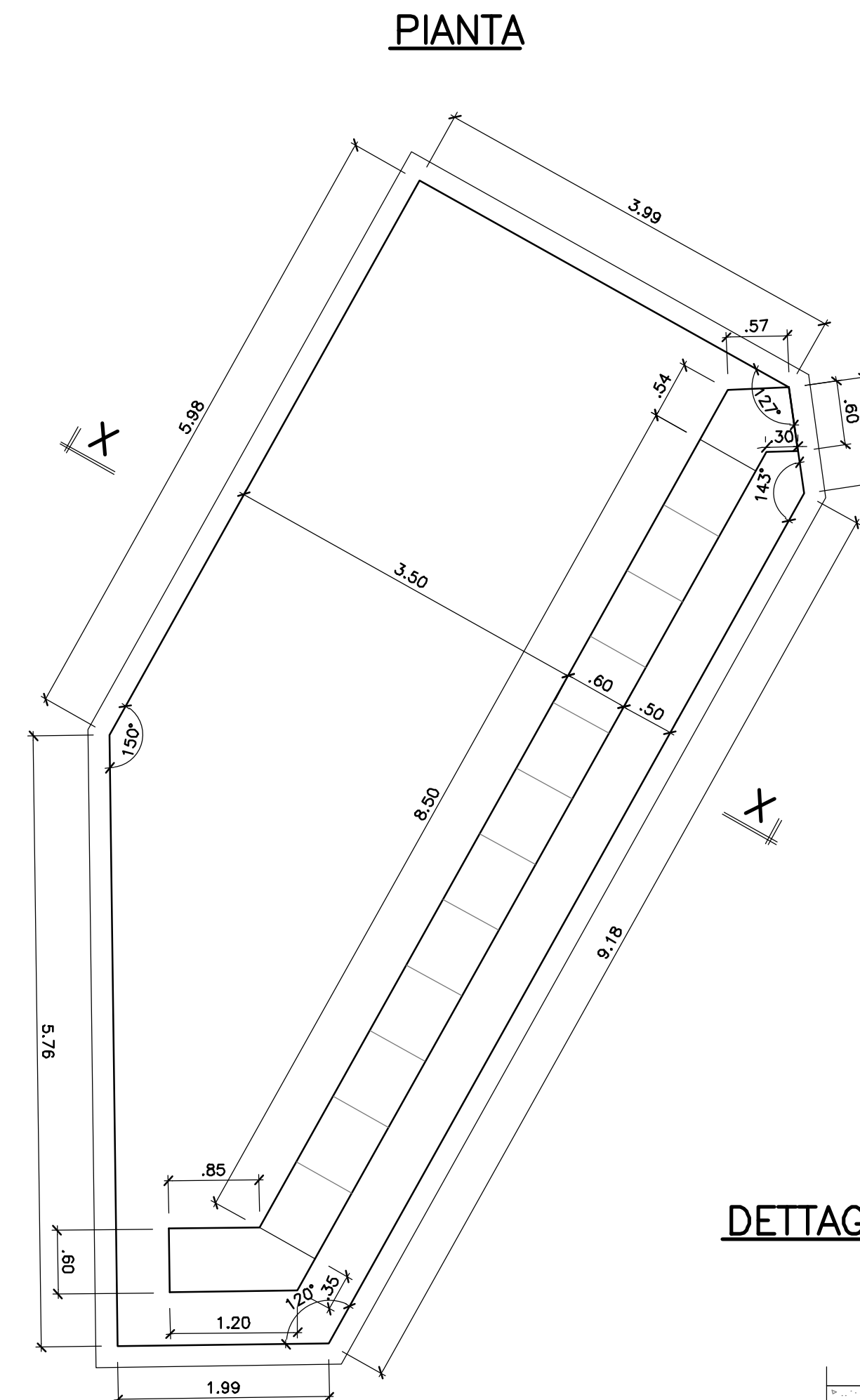
SEZIONE B-B

SCALA 1:50

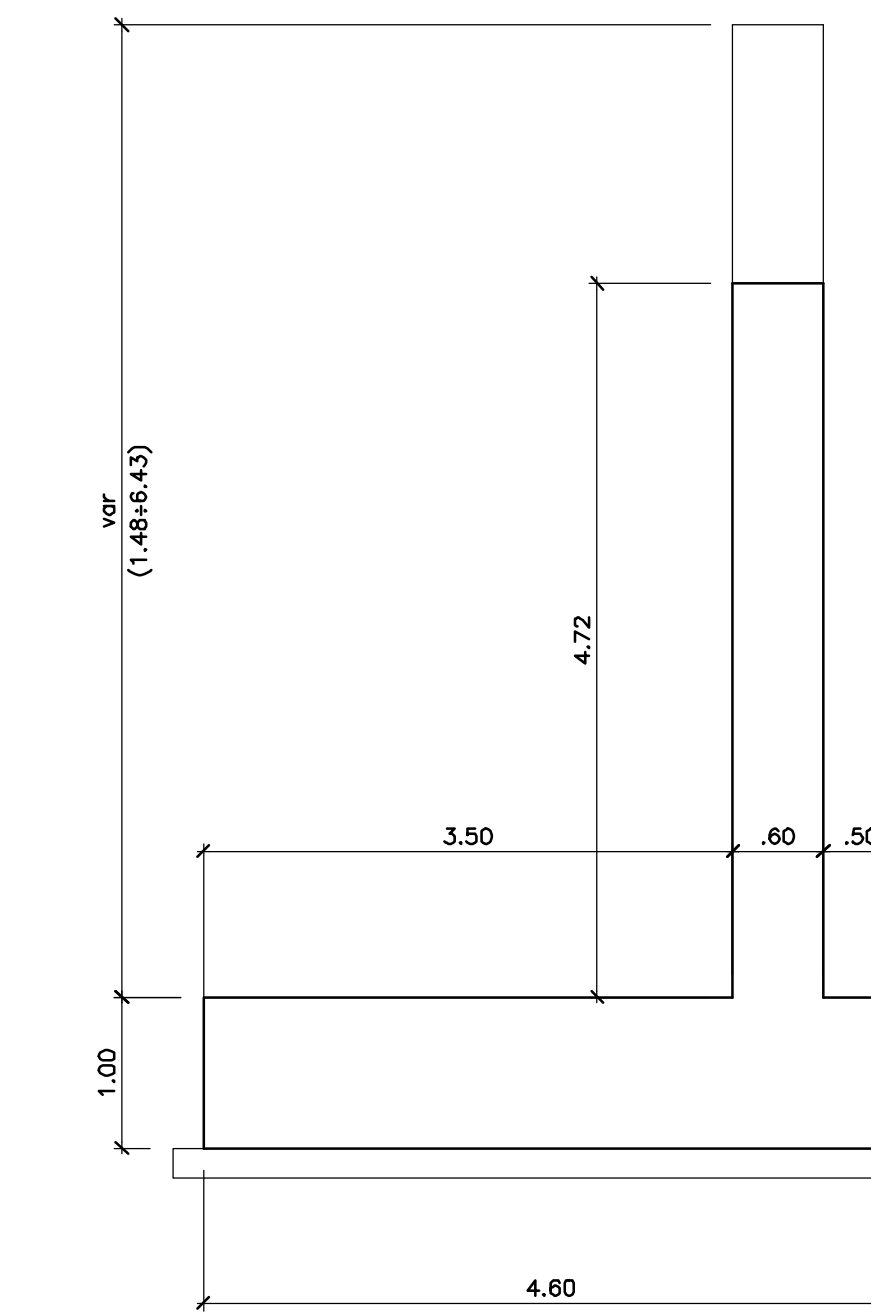


TIPOLOGICO MURO D'ALA

SCALA 1:50

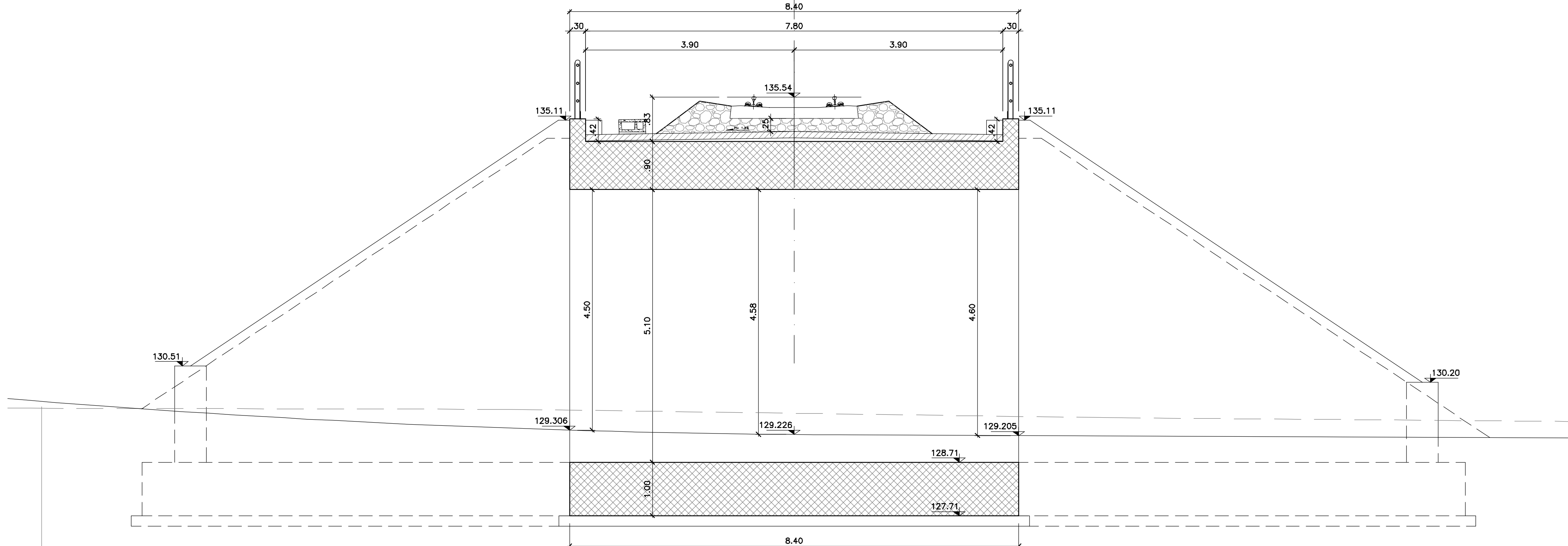


SEZIONE X-X



SEZIONE C-C

SCALA 1:50



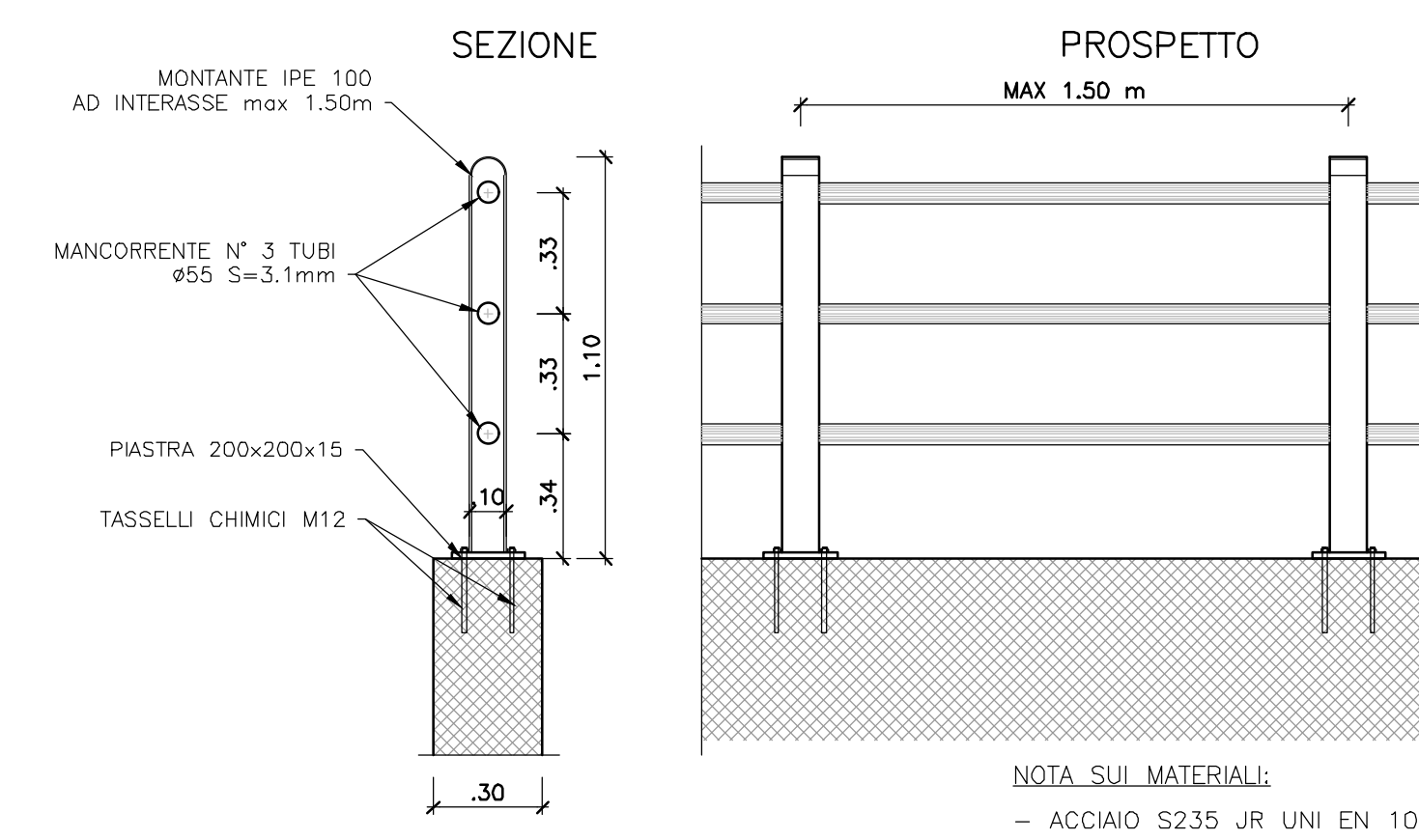
DETTAGLIO PAVIMENTAZIONE STRADALE

SCALA 1:20



PARTICOLARE PARAPETTO

SCALA 1:20



PARTICOLARE "X"

SCALA 1:10

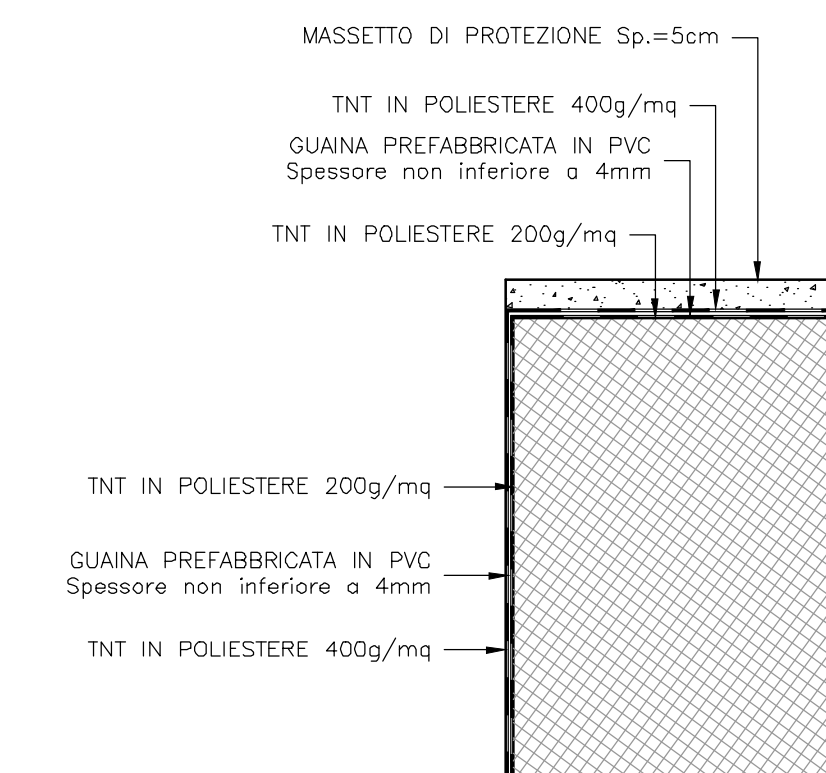


TABELLA MATERIALI (Validità generale a meno di indicazioni specifiche sulle singole opere)

Table of materials including concrete, steel, and foundations with columns for description, class, and application.

ACCAIO
Classe di esecuzione delle opere in carpenteria metallica, ai sensi della UNI EN 1090-2: EXC3
ACCIAIO IN BARRE PER GETTI E RETI ELETTROSALDATE

PRESCRIZIONI
COPRIFERRO NETTO
- PALI DI FONDAZIONE E PER PARABE...

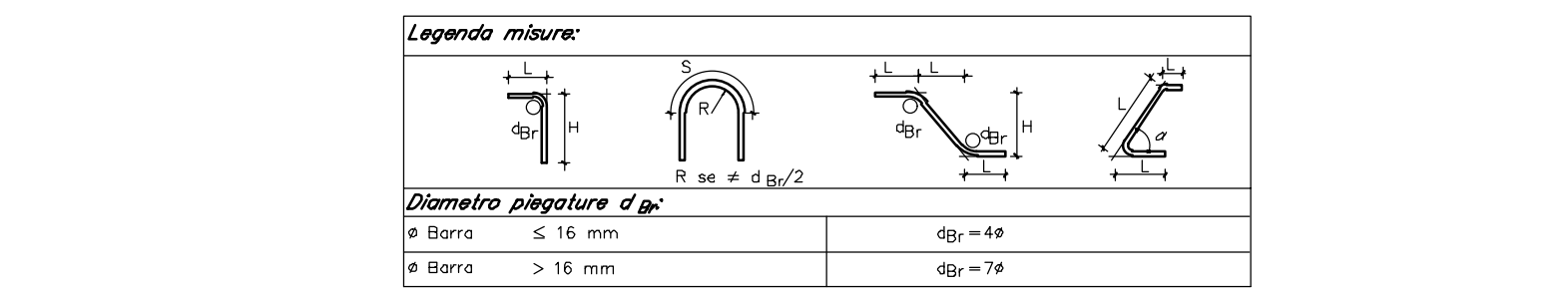


Table showing steel quantities and excavation volume: INCIDENZA ACCIAIO and VOLUME SCAVO.

Project information block including committee name (RFI), design name (ITALFERR), project details (U.O. PROGETTAZIONE INTEGRATA NORD), and revision table.