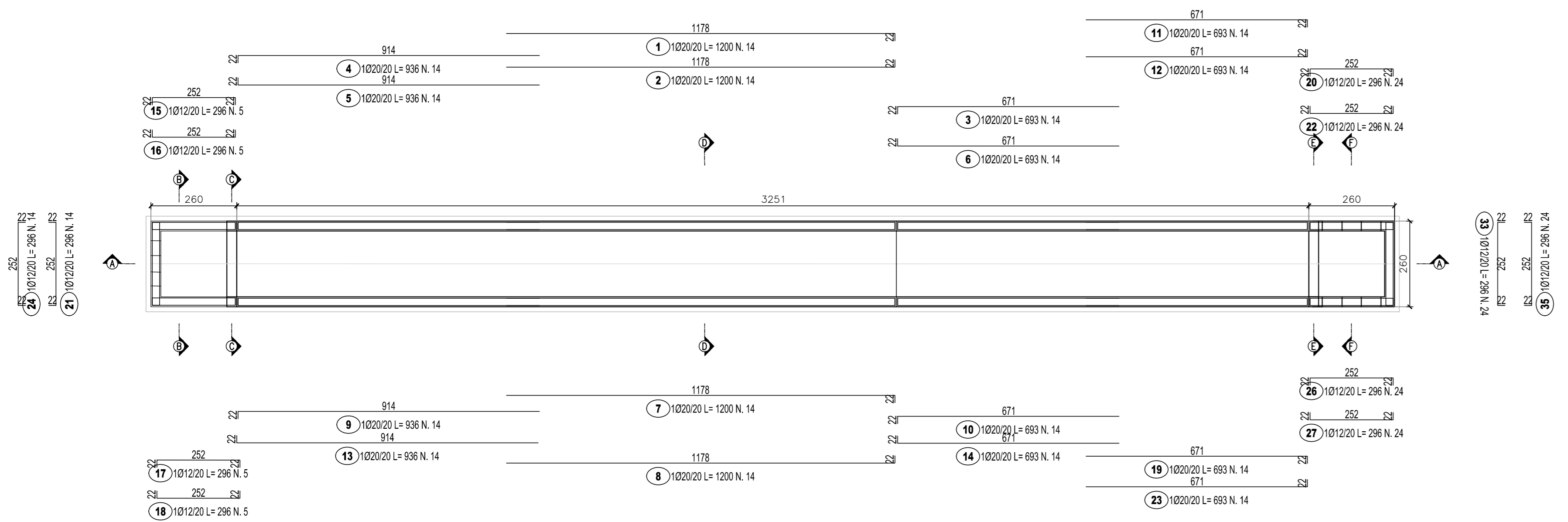
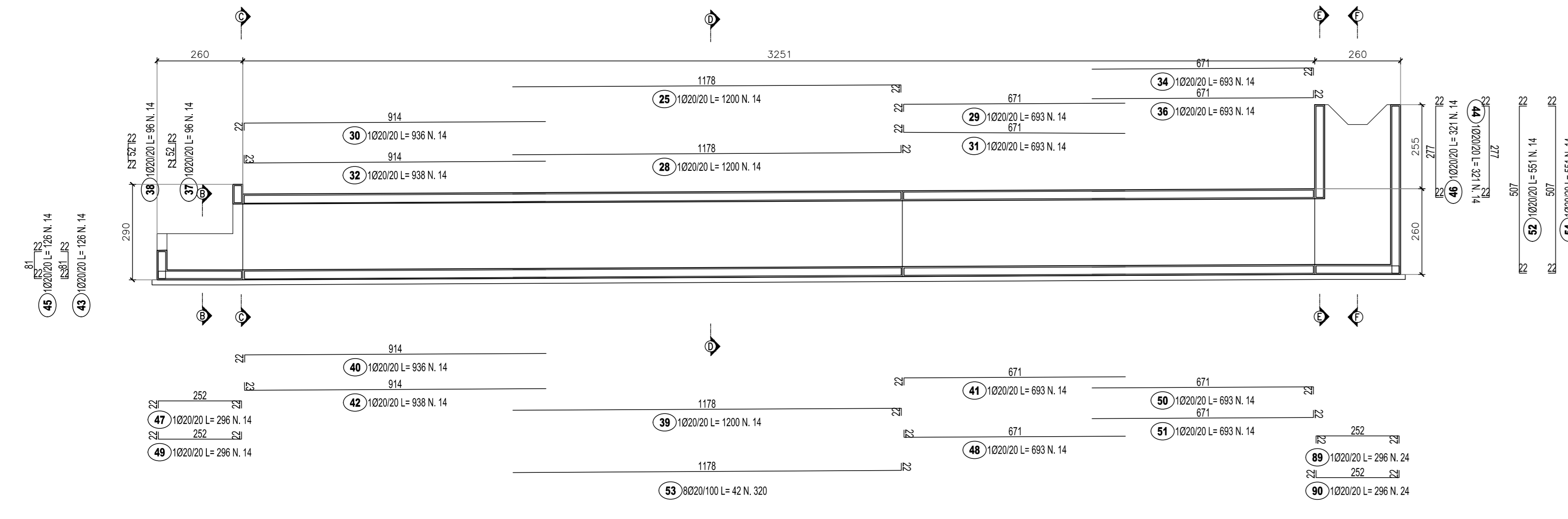


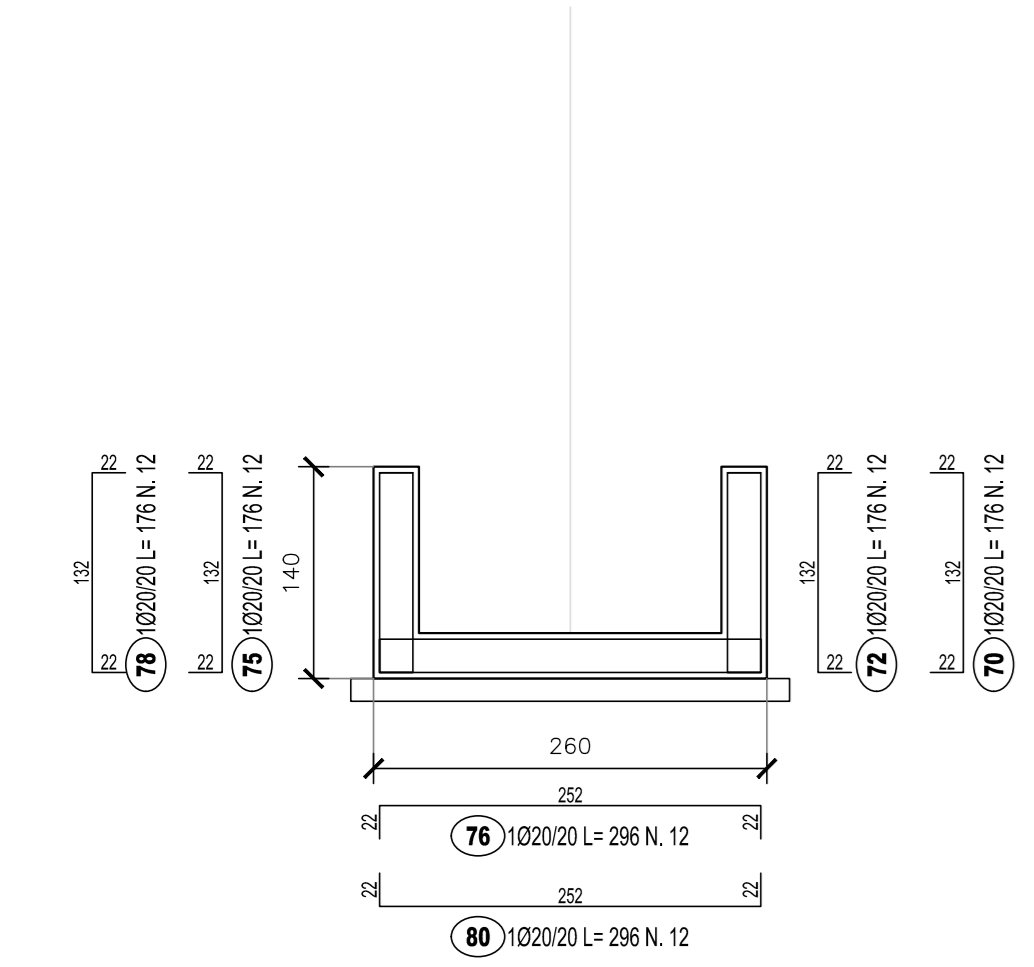
PIANTA
SCALA 1:100



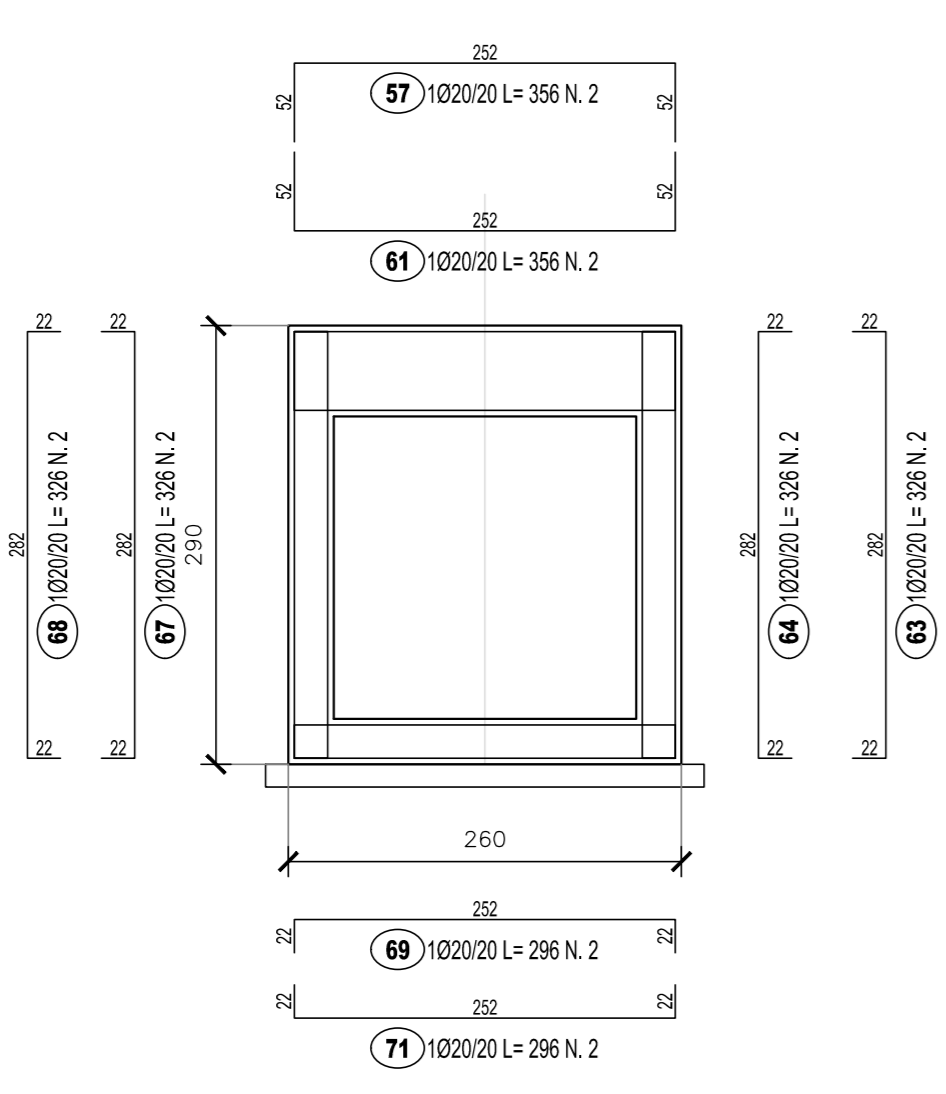
SEZIONE A-A
SCALA 1:100



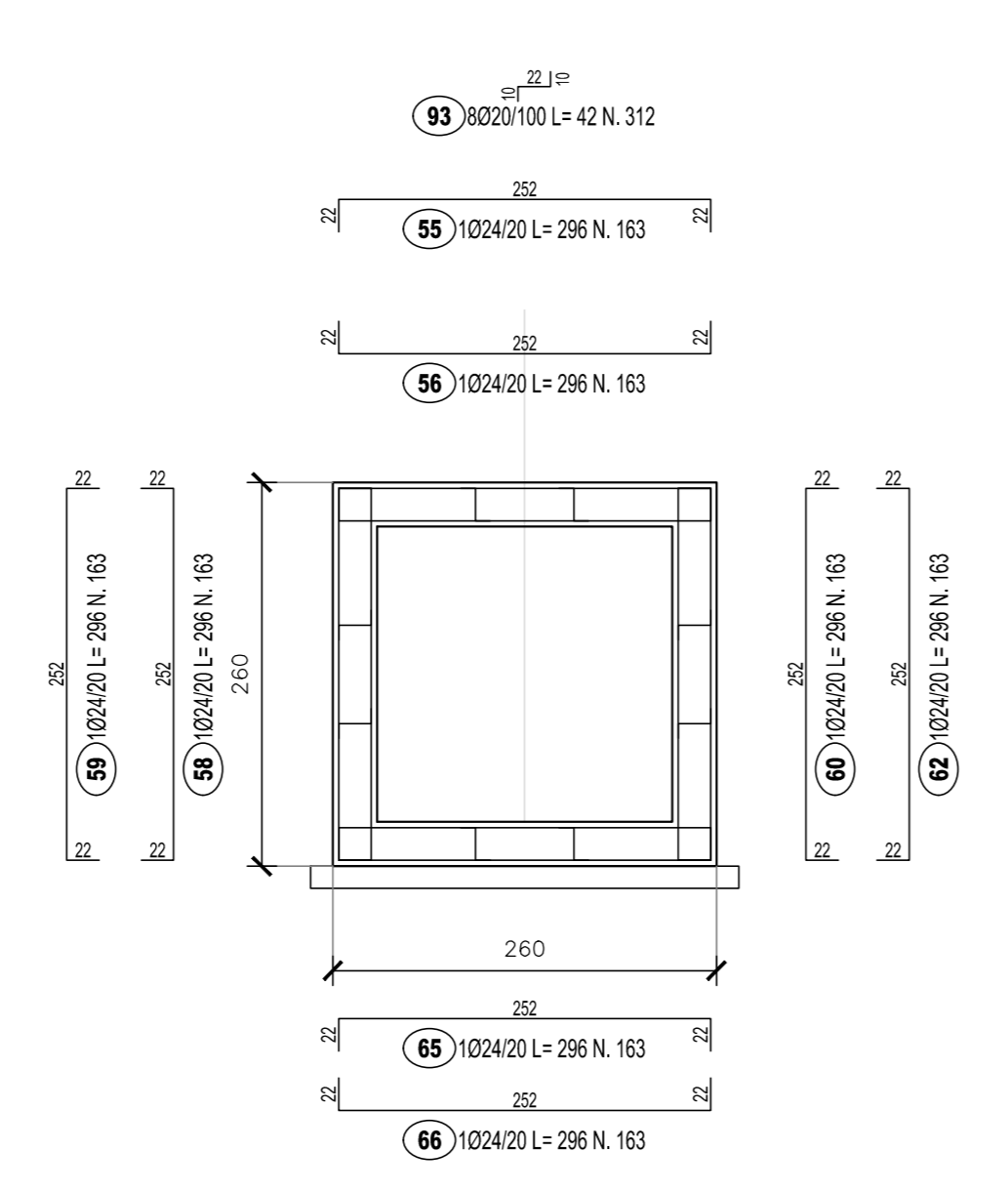
SEZIONE B-B
SCALA 1:50



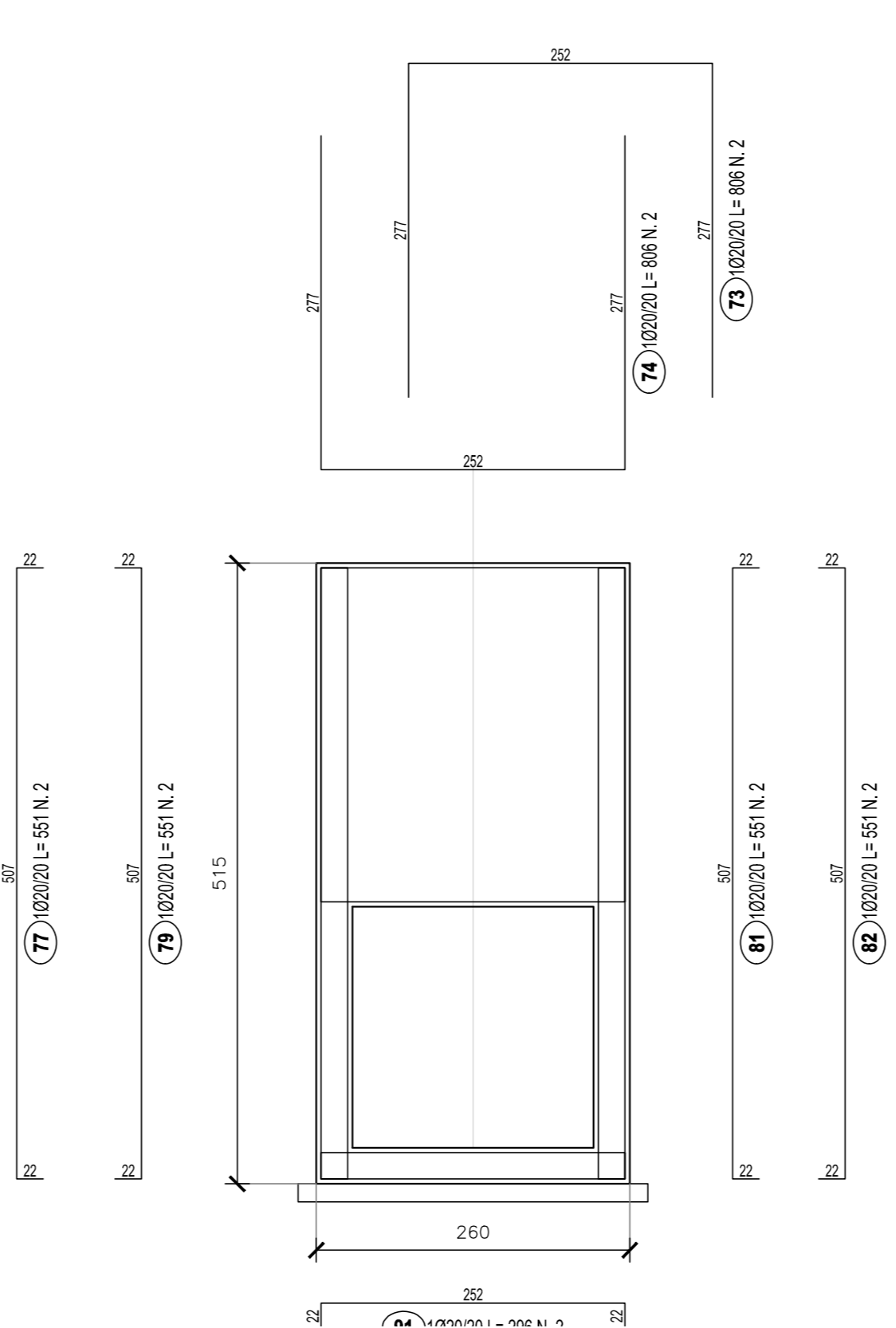
SEZIONE C-C
SCALA 1:50



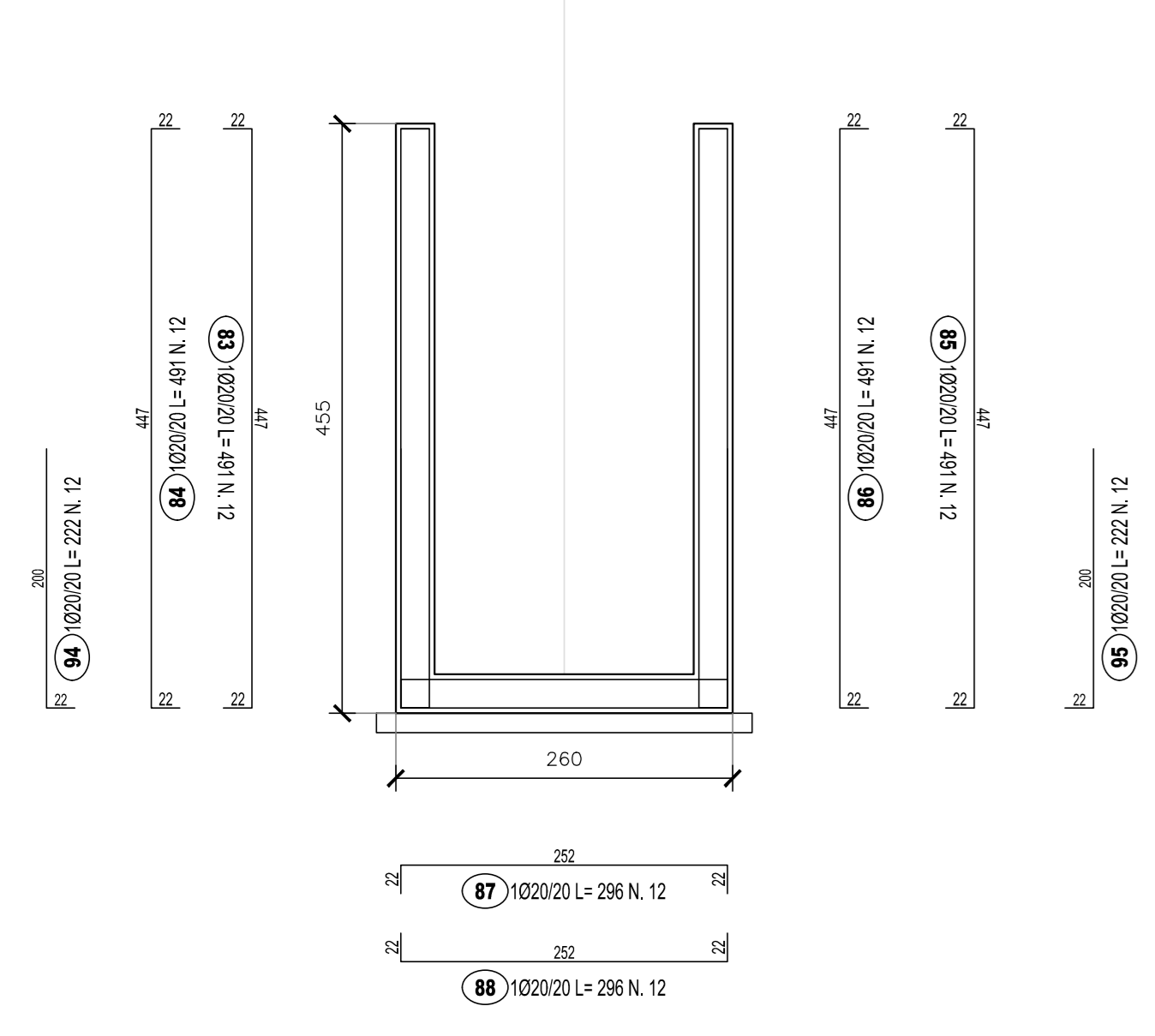
SEZIONE D-D
SCALA 1:50



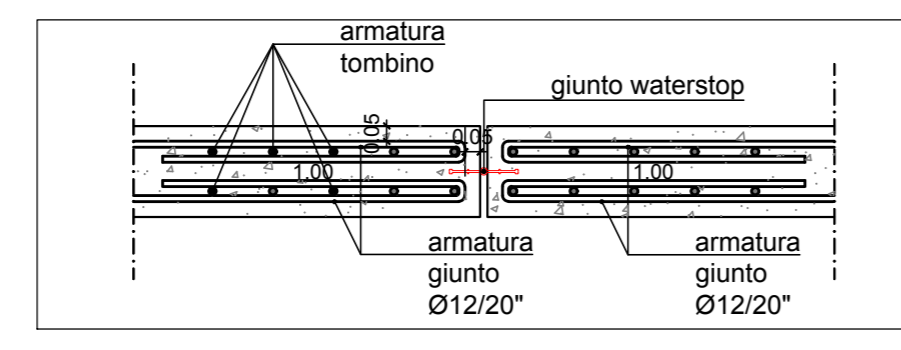
SEZIONE E-E
SCALA 1:50



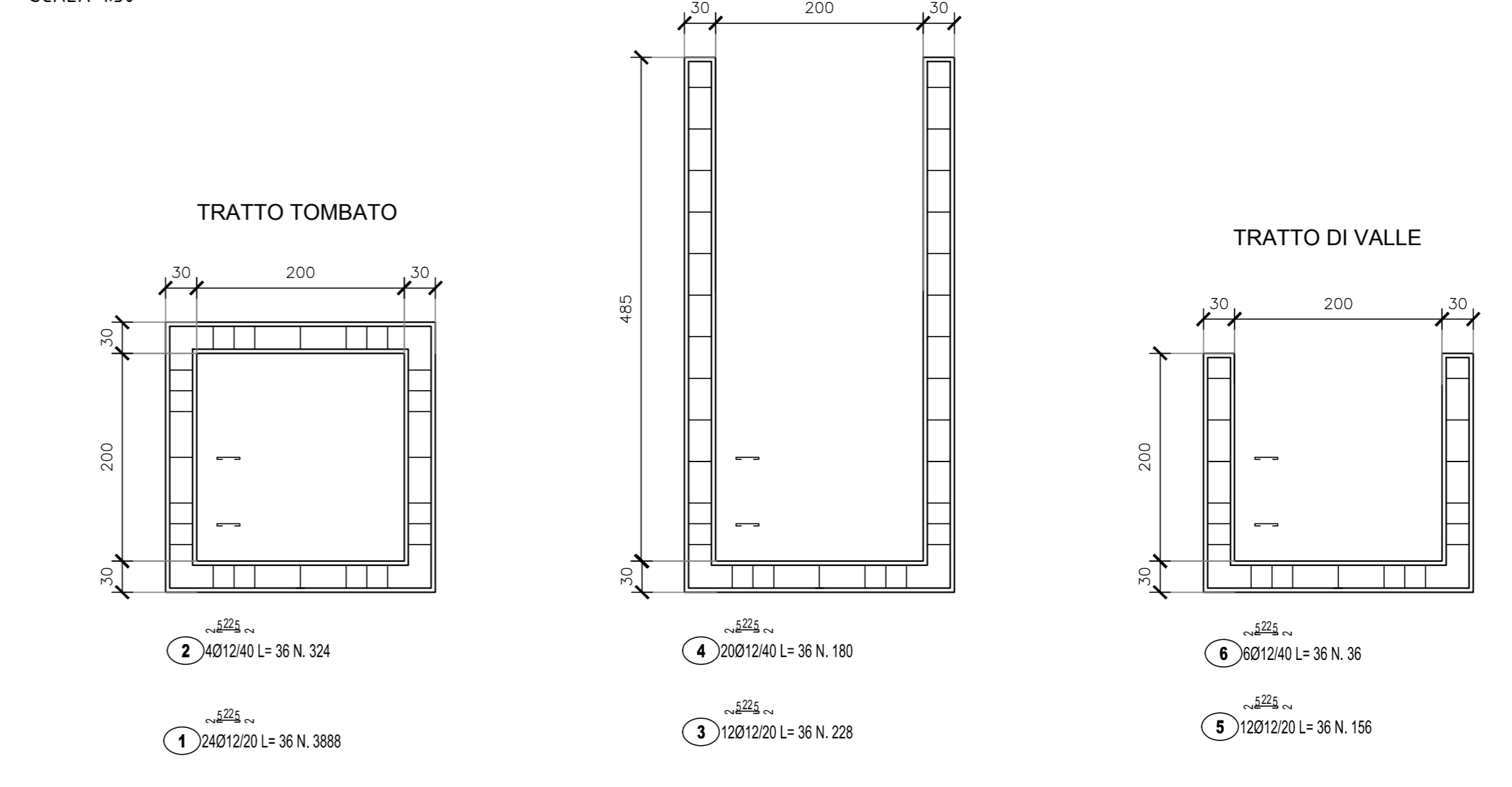
SEZIONE F-F
SCALA 1:50



PART. GIUNTO WATER-STOP
SCALA 1:25

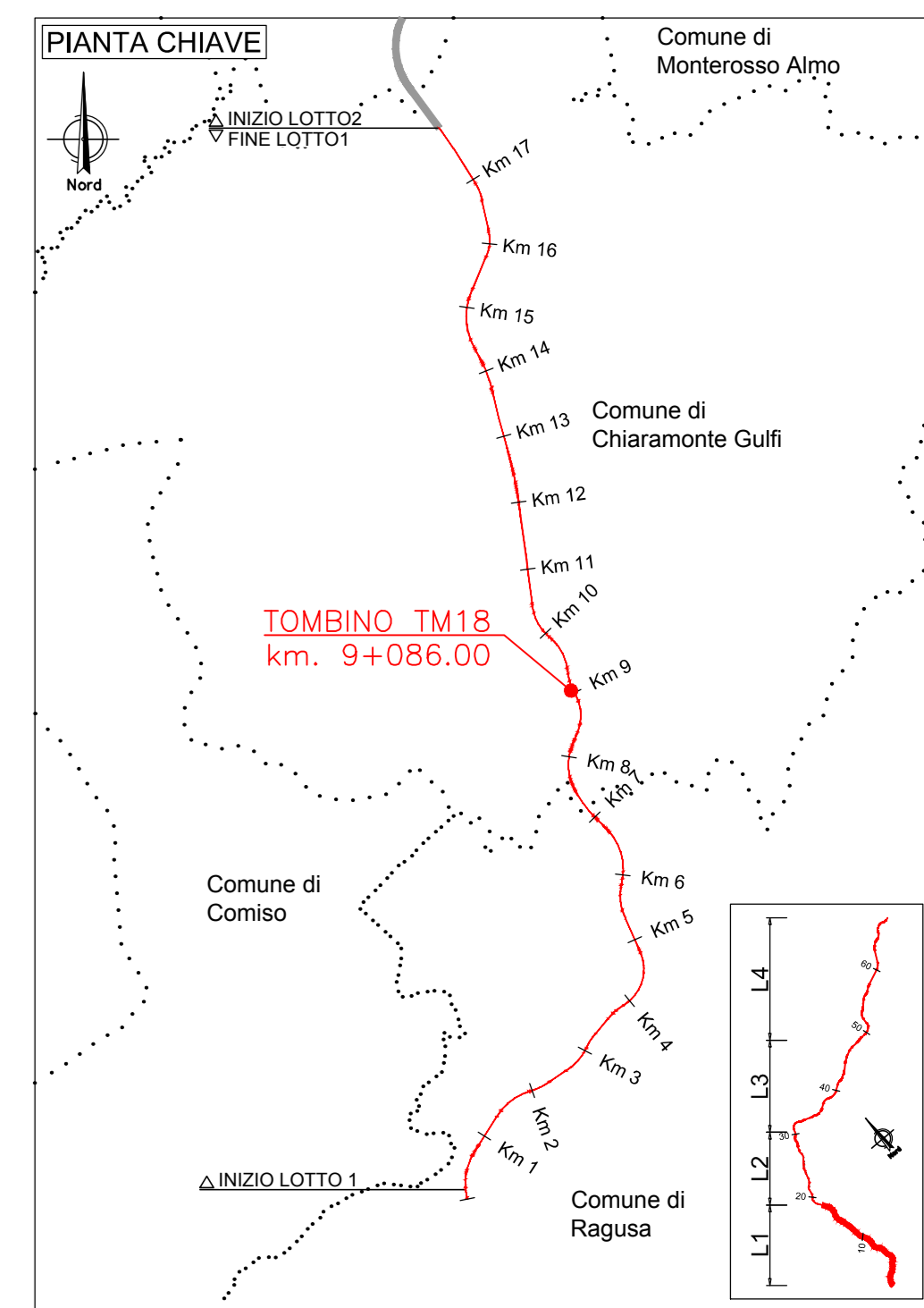


DETTAGLIO SPILLI
SCALA 1:50

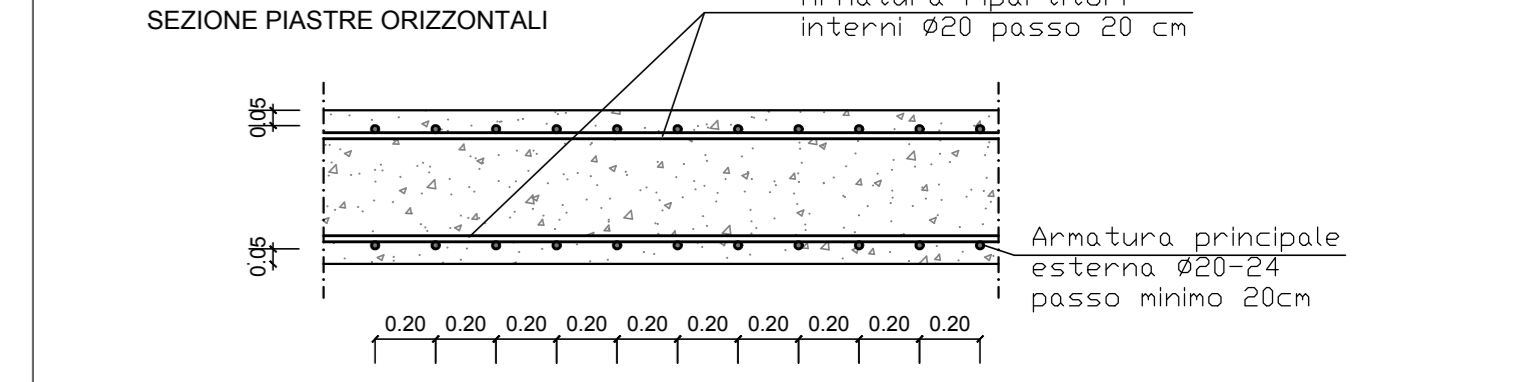
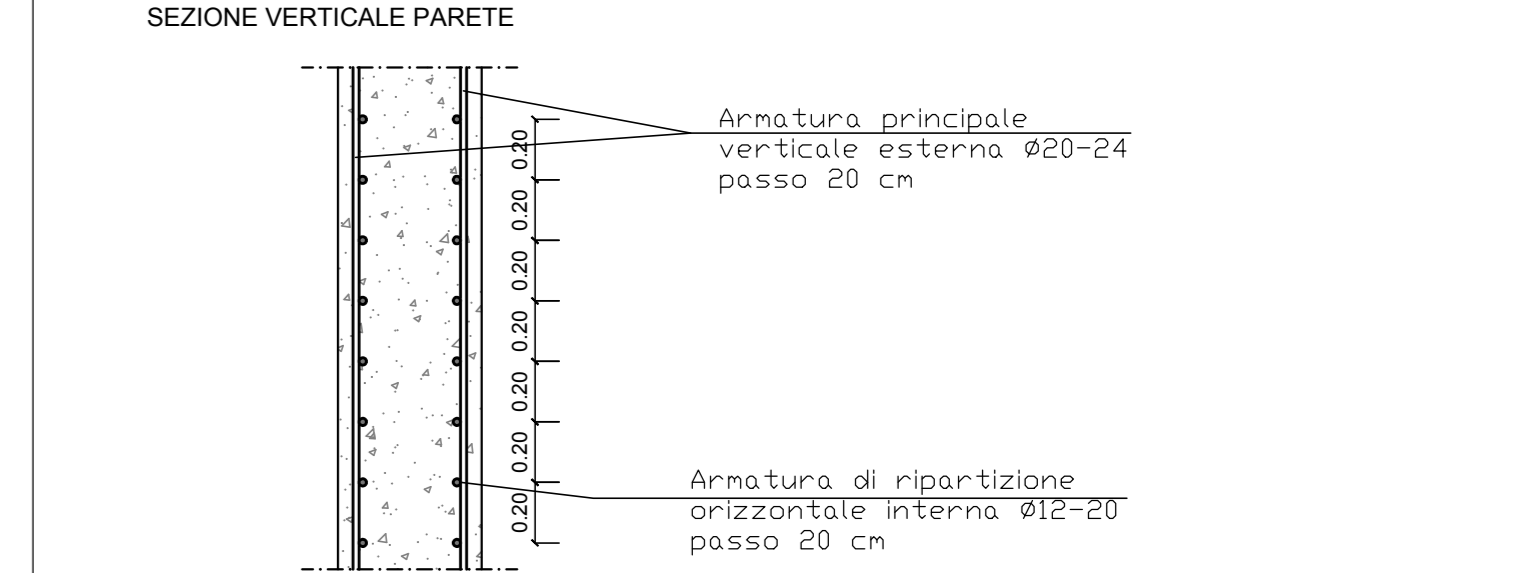
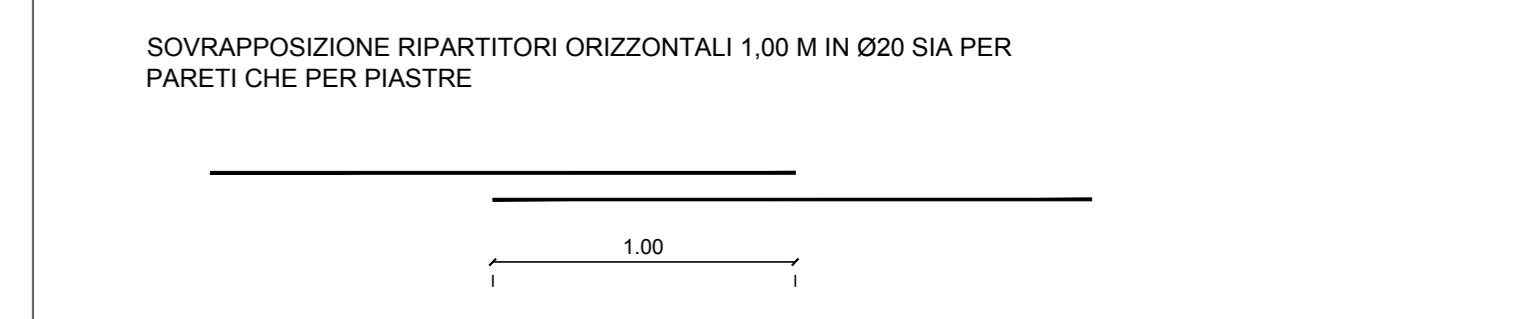
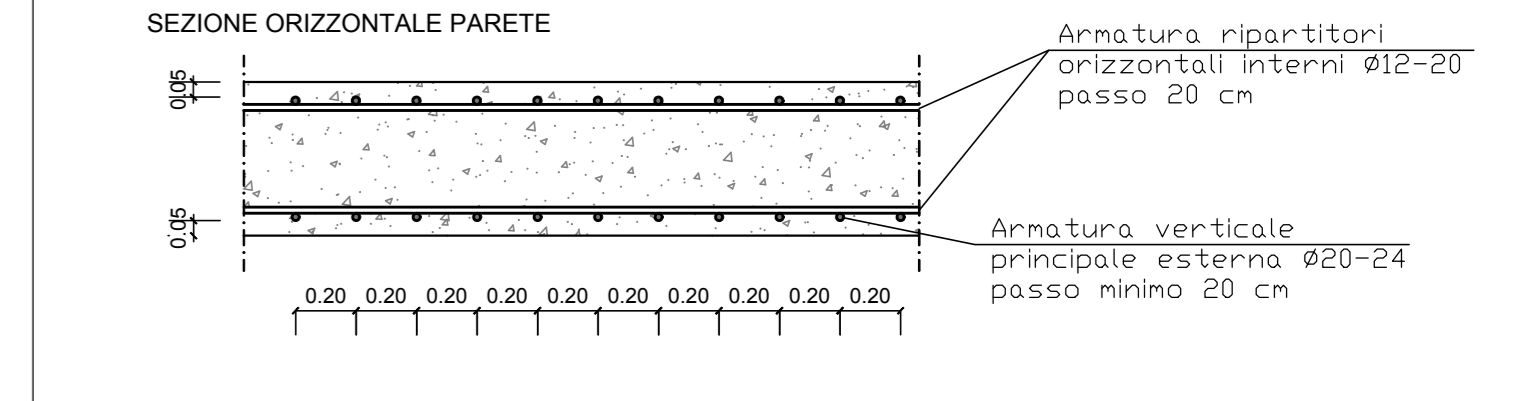


LISTA FERRO: TABLE WITH 6 COLUMNS (Pos, Diametro, Finito, Spessore, Lunghezza, Kg/m, Tot. Kg) listing reinforcement bars.

LISTA FERRO: SPILLI: TABLE WITH 6 COLUMNS (Pos, Diametro, Finito, Spessore, Lunghezza, Kg/m, Tot. Kg) listing reinforcement bars for spigots.



SCHEMA POSIZIONAMENTO
SCALA 1:25



- NOTE: 1) Il copriferro nominale deve essere sempre non minore di 4cm. 2) La sovrapposizione delle armature, ove non espressamente indicato, deve avere una lunghezza minima di 50 diametri. 3) Per la tabella materiali fare riferimento all'elaborato specifico 'T01EG04GENSC01'.

Project information block including logo for Sanas, project title 'ITINERARIO RAGUSA-CATANIA', client 'COOPROGETTI-GDG-ICARIA-OMNISERVICE', project code 'PA895', and project manager 'Dot. Ing. Danilo PELLE'.