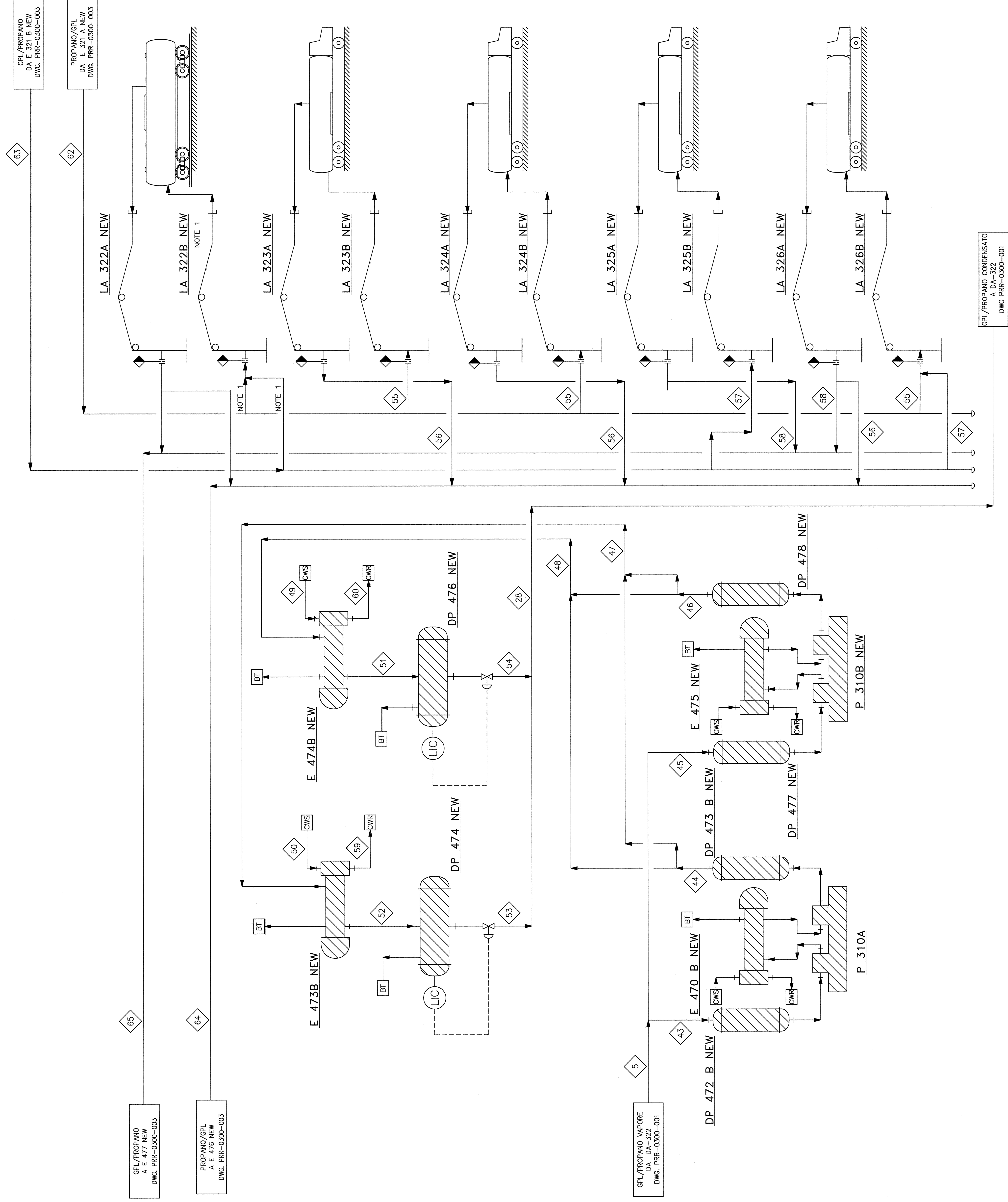



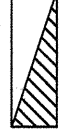
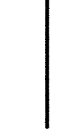




NOTE
Note

1) IL CARICAMENTO SU FERROCISTERNA NON AVVIENE MAI IN CONTEMPORANEA
AL CARICAMENTO SU AUTOBOTTI



LEGENDA
Legend

-  = CORRENTE / Stream Label
-  = POT. TERMICA / Duty [M. KCAL/H]
-  = APPARECCHIATURA NUOVA / New Equipment
-  = APPARECCHIATURA ESISTENTE / Existing Equipment
-  = EXISTING LINE
-  = NEW LINE
-  = PACKAGE LIMITS

REV. Rev.	DATA Date	EMMISSIONE PER COMMENTI DESCRIPTION	APP. APPROV. Approved
00	11/05/12		

DESCRIZIONE Description

EMMISSIONE PER COMMENTI

APP. APPROV. Approved

RED. Prepared

CONTR. Checked

DESIGNER

DATE

DESCRIPTION

APPROVED

PREPARED

CHECKED

APPROVED

SCHEMA DI PROCESSO

STOCCAGGIO REFRIGERATO

CARICAMENTO PROPANO-GPL

CLIENTE/LOCALITA' : Eni R&M - Porto Marghera (VE)
Client/Location :

IMPIANTO : NUOVO STOCCAGGIO GPL/PROPANO

FORM. SCALE : PROGETTO DOCUMENTO

FOGLIO SHEET : 2

REV. REV. : PRR-0300-002

FILE NAME : PRR-0300-002_REV.00.