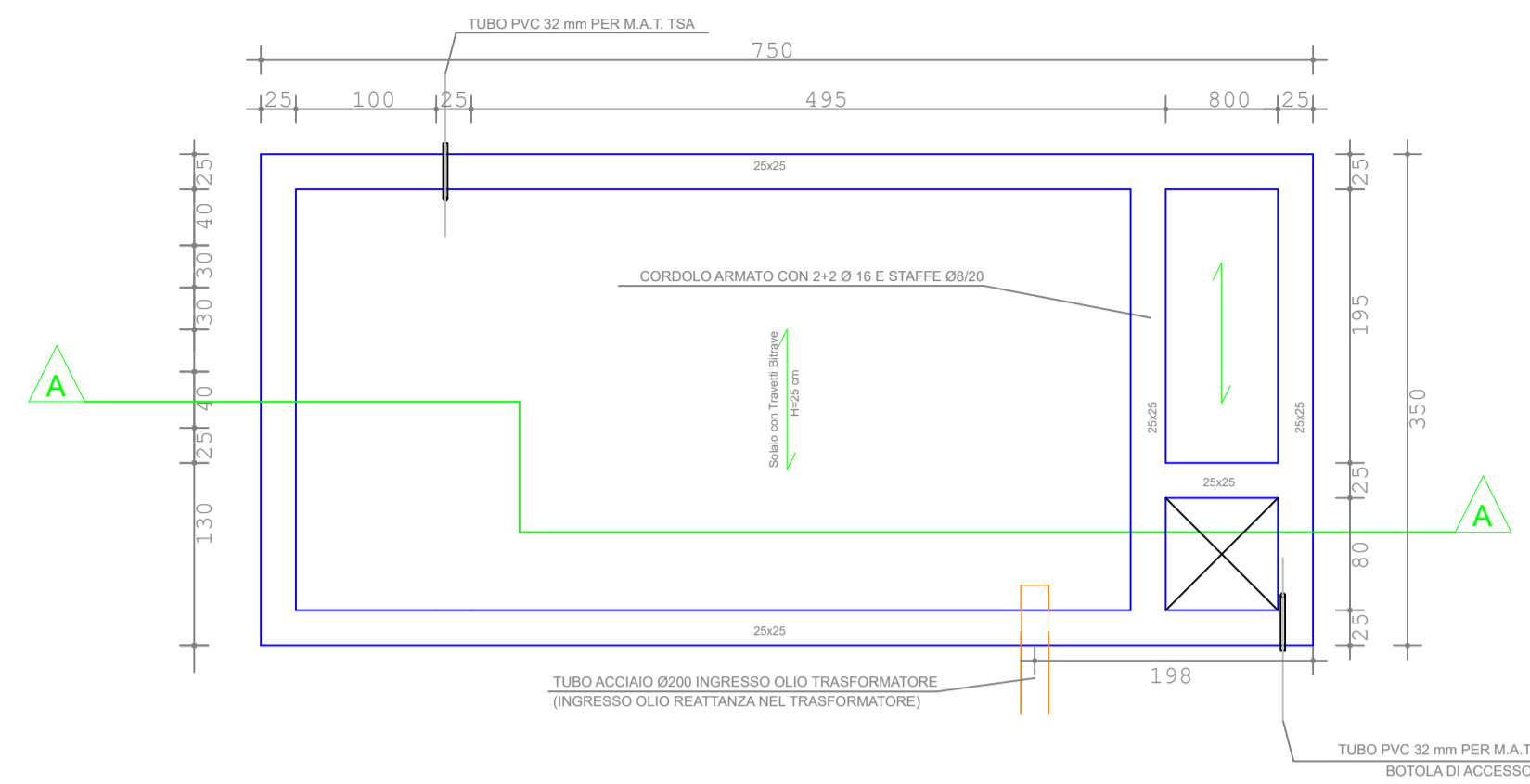
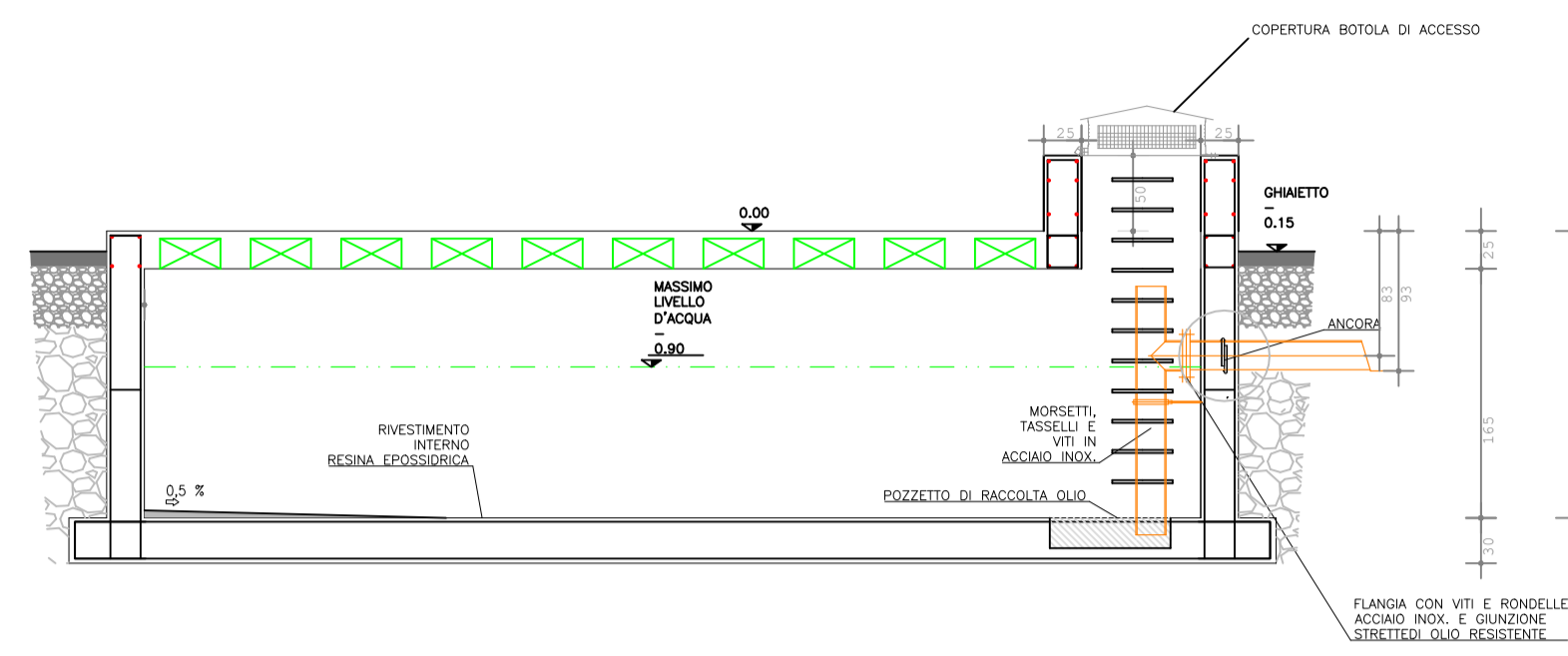


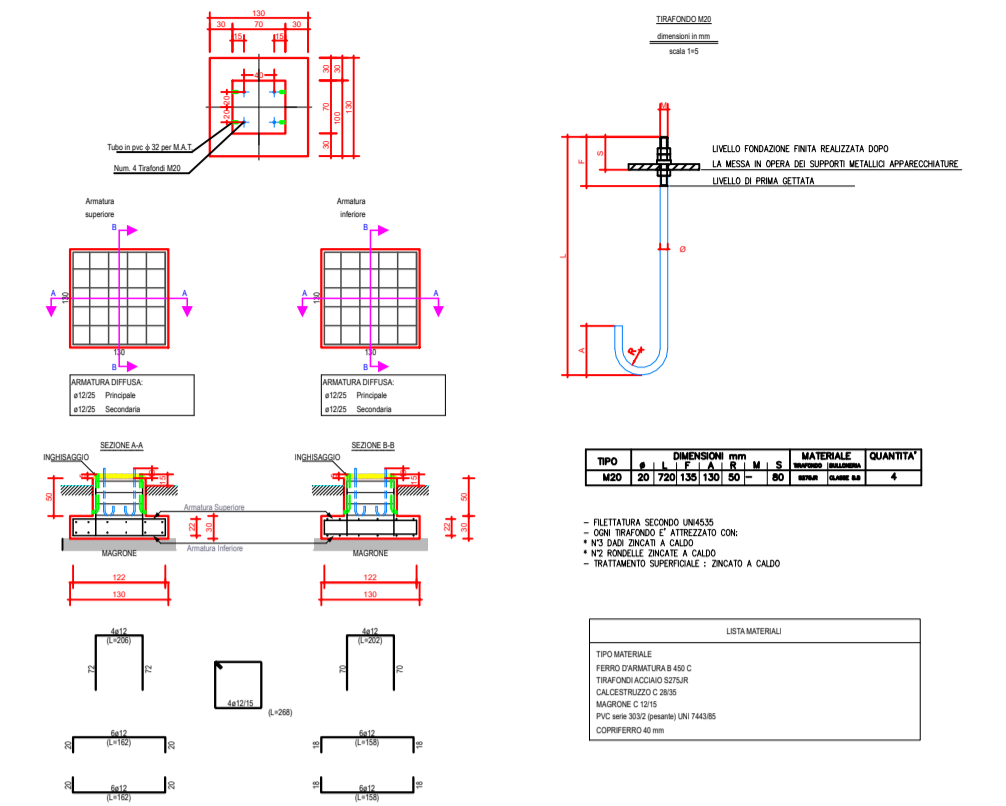
COPERTURA VASCA OLIO



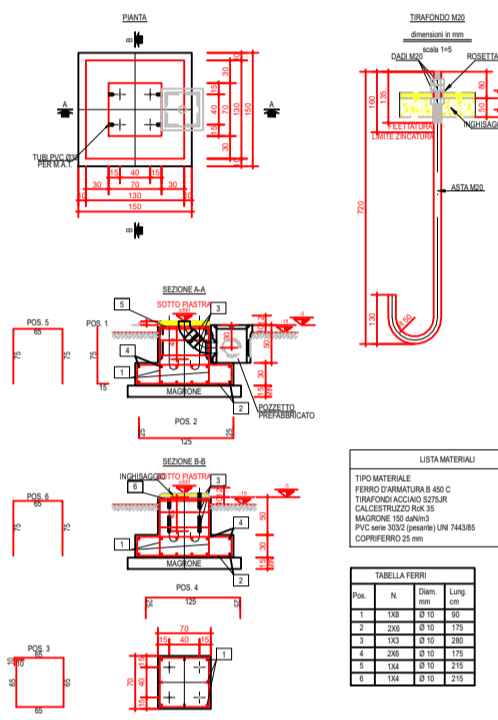
SEZIONE A-A



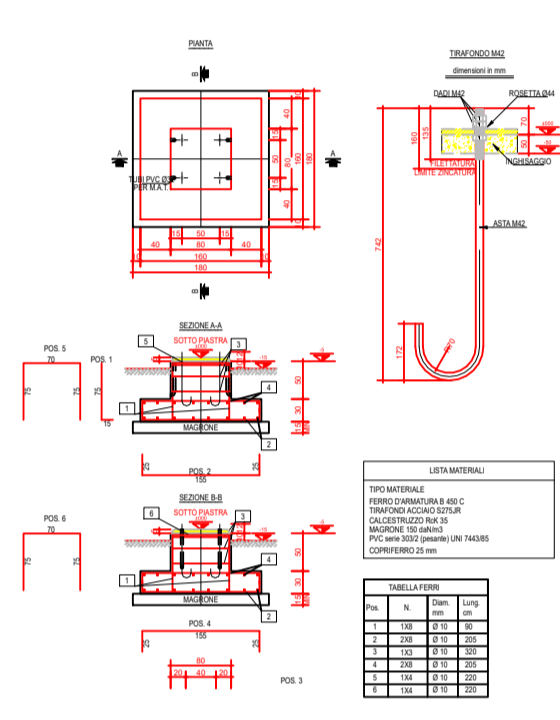
A8 - NEUTRO TR



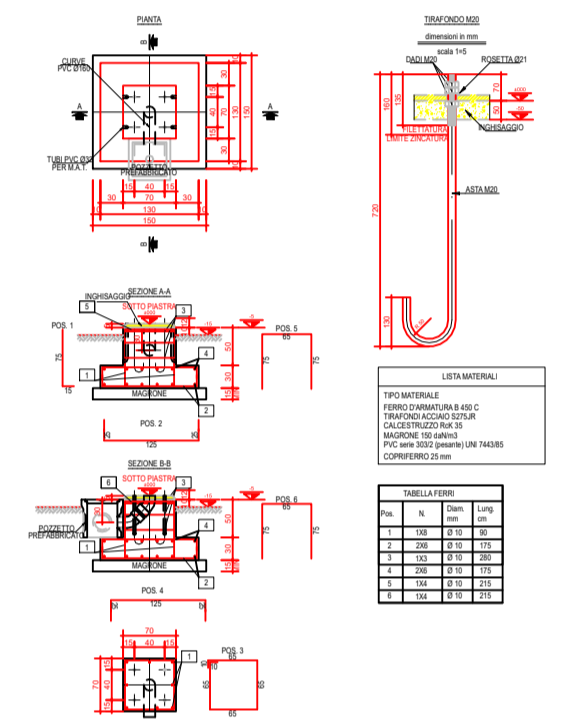
AO - TERMINALE CAVO AT + A1 - SCARICATORE



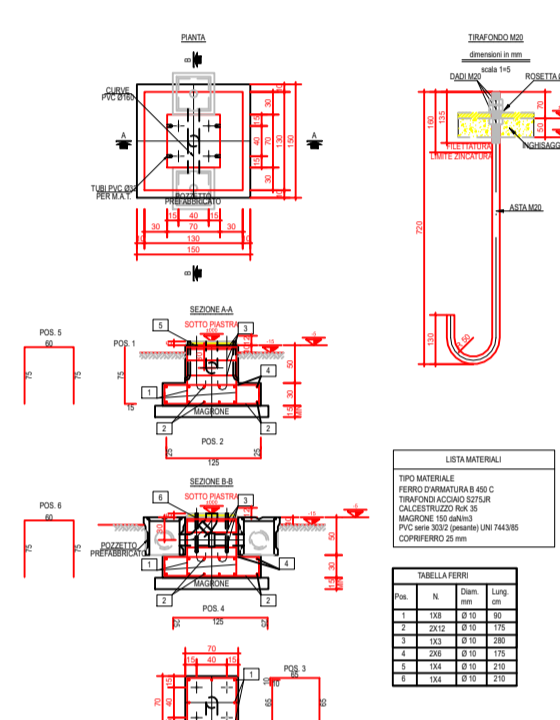
A1 - SCARICATORE



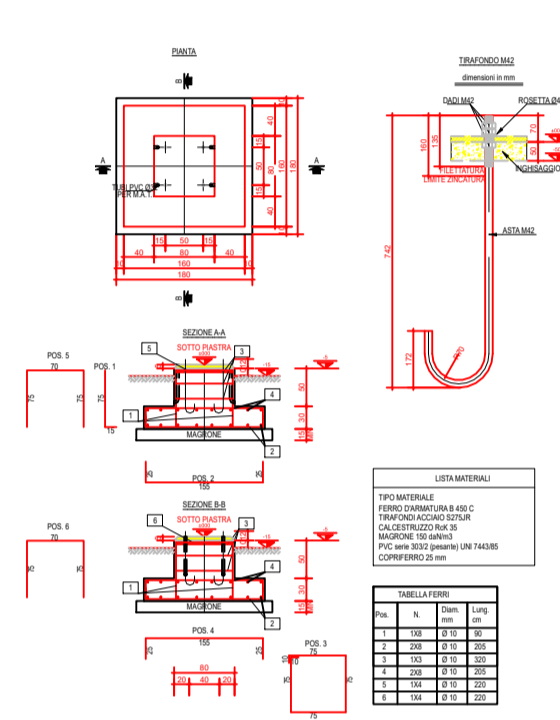
A2 - TRASFORMATORE DI TENSIONE (TV)



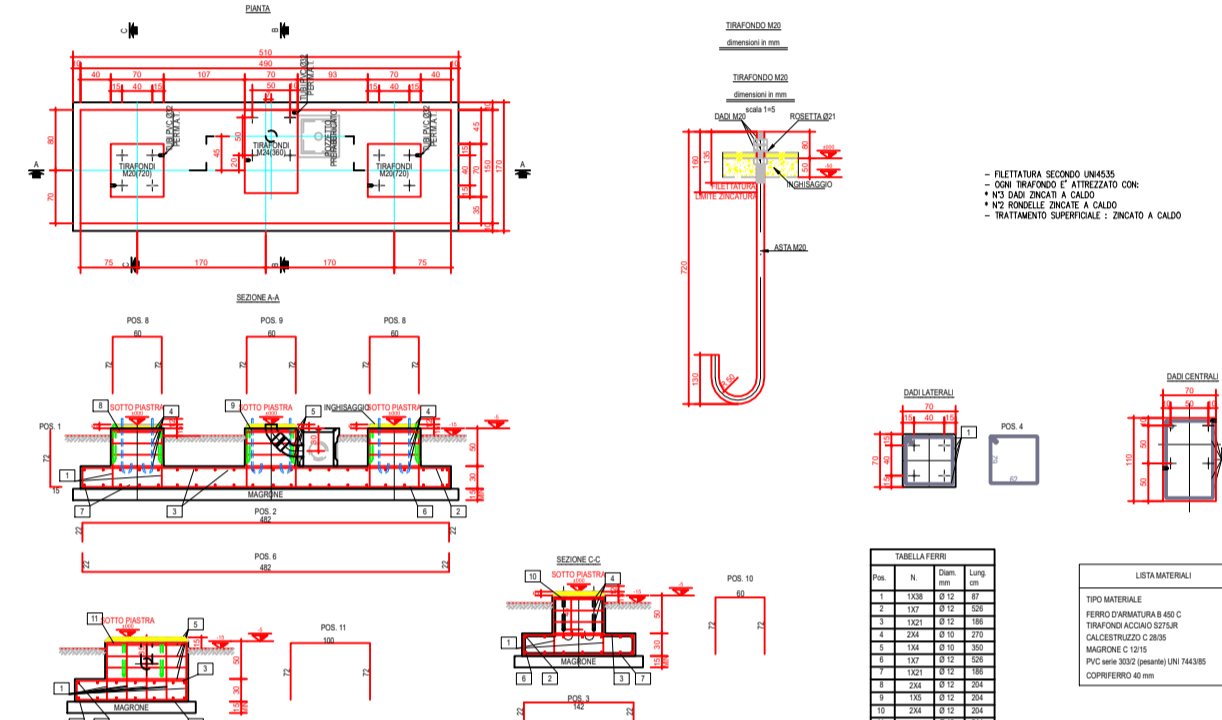
A4 - TRASFORMATORE DI CORRENTE (TA)



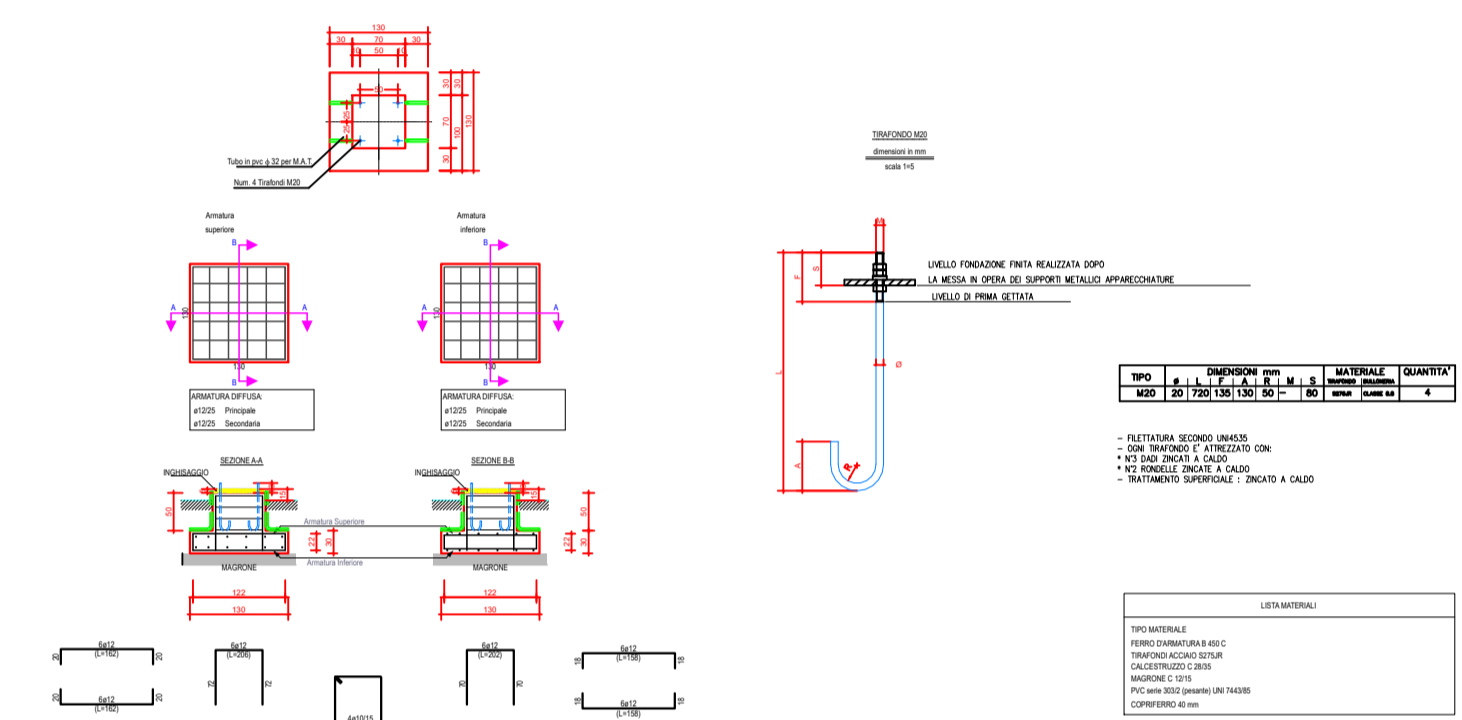
A5 - INTERRUITTORE AT



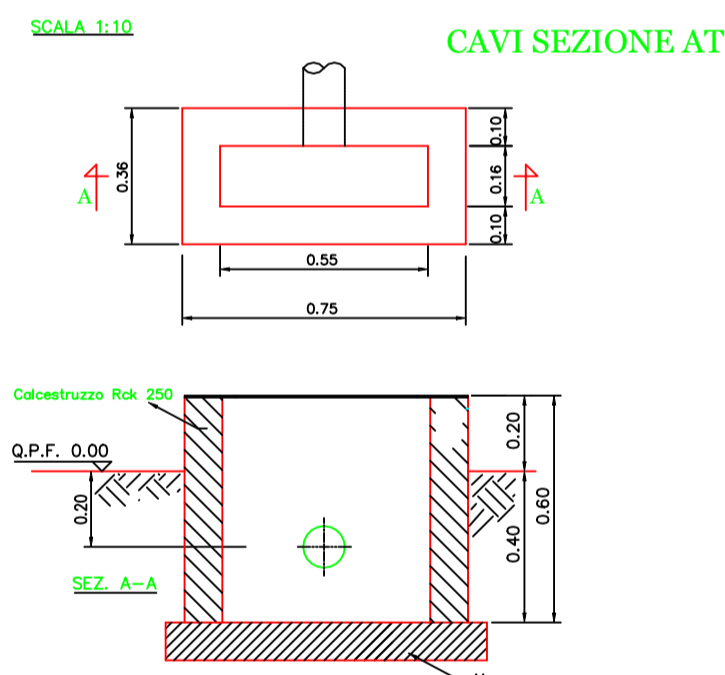
A3 - SEZIONATORE ORIZZONTALE AT



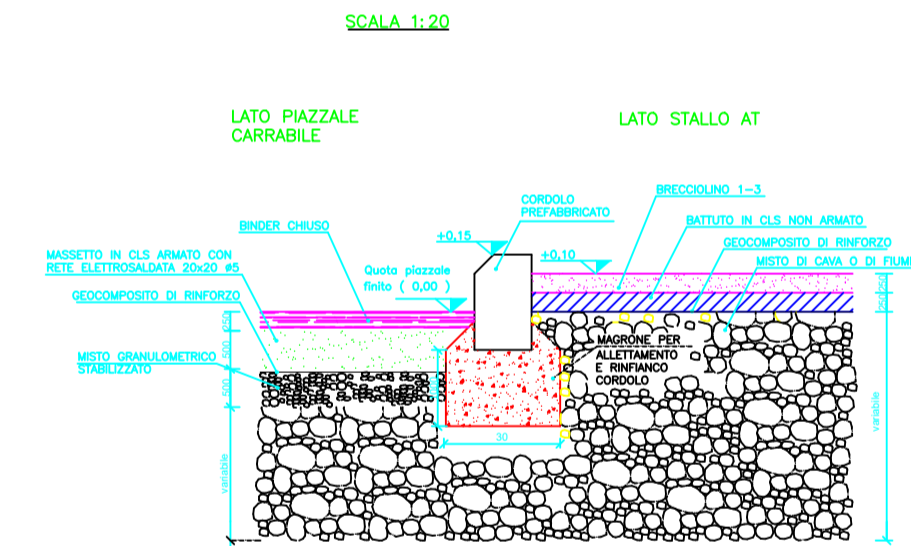
A12 - ROMPIFRATTA



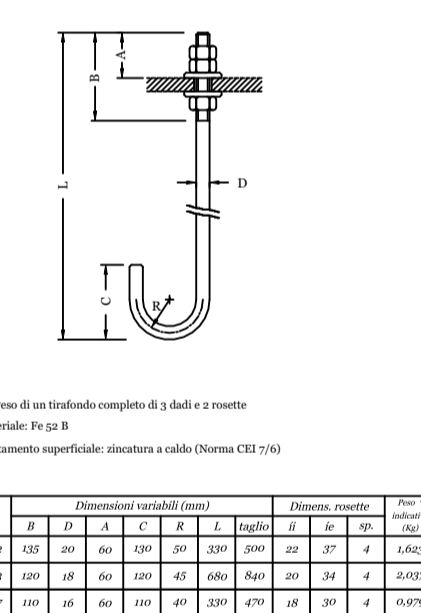
BASAMENTO PER ARMADIO SMISTAMENTO



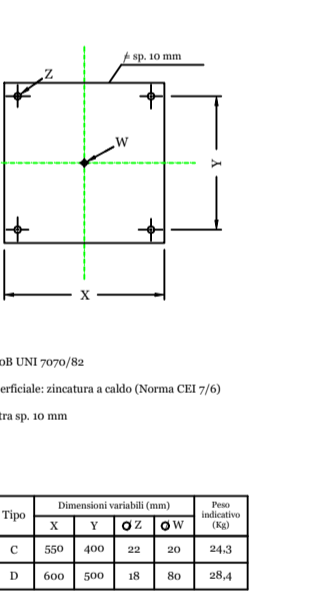
STRATIGRAFIA PIAZZALE



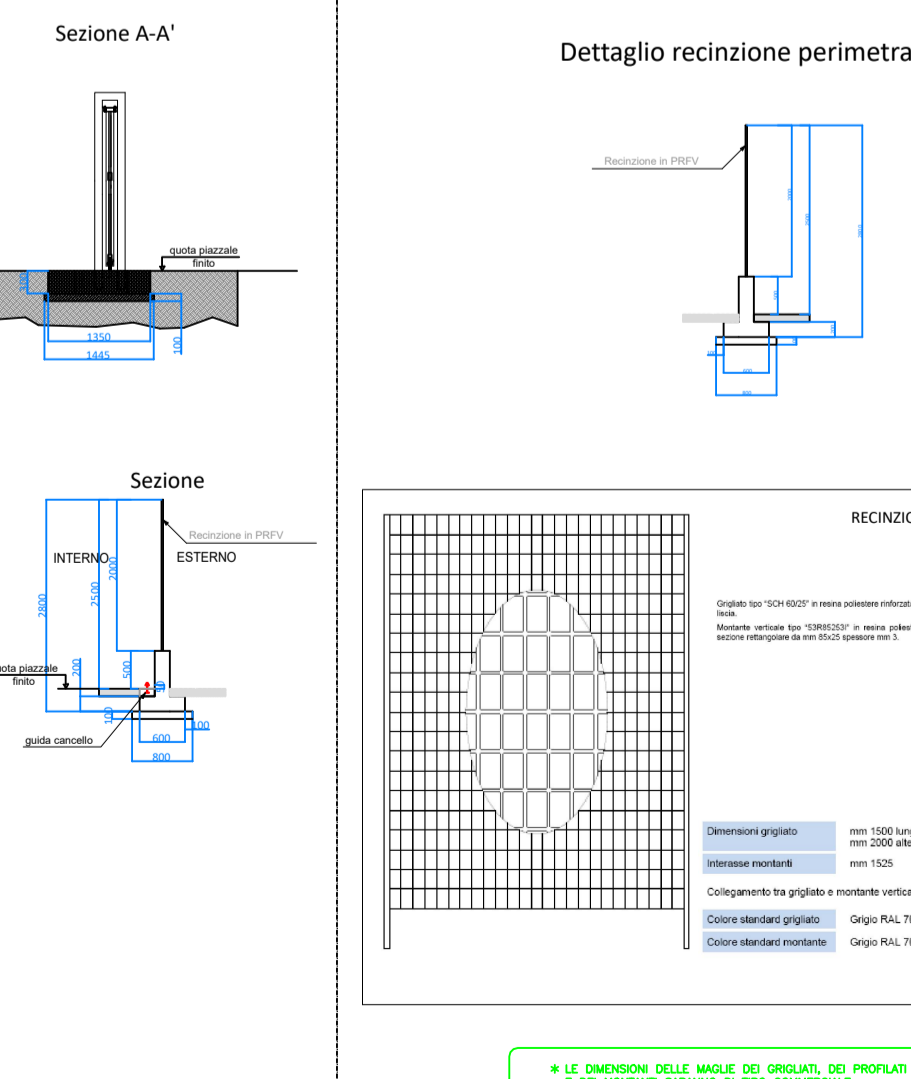
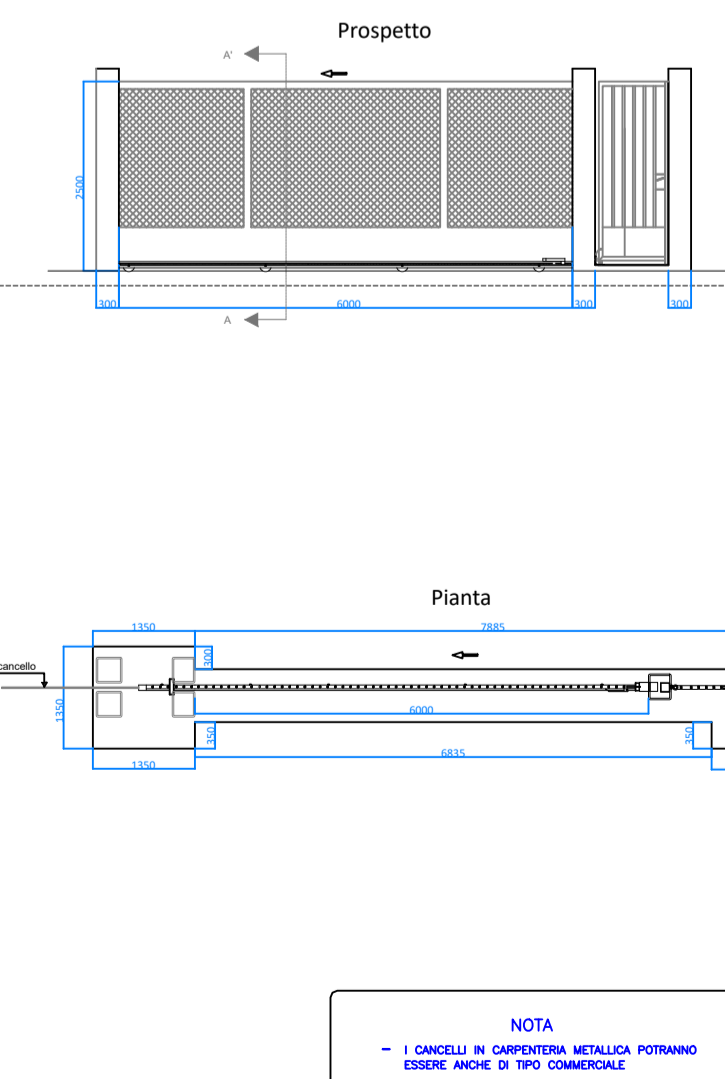
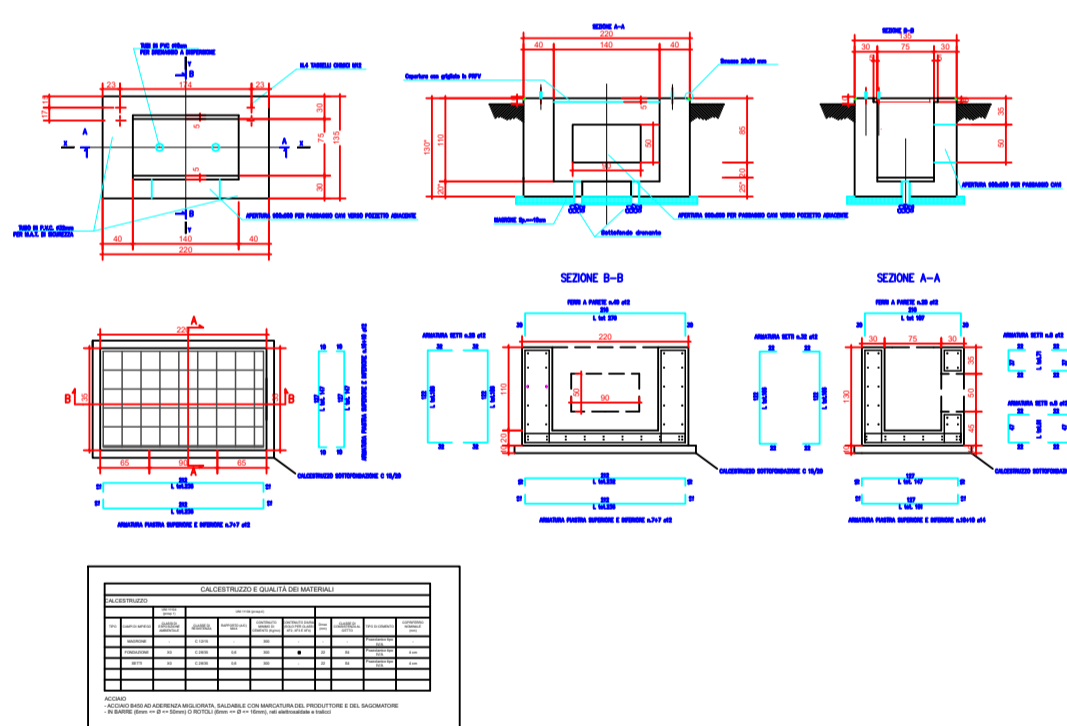
Tirafondi unificati per fissaggio strutture



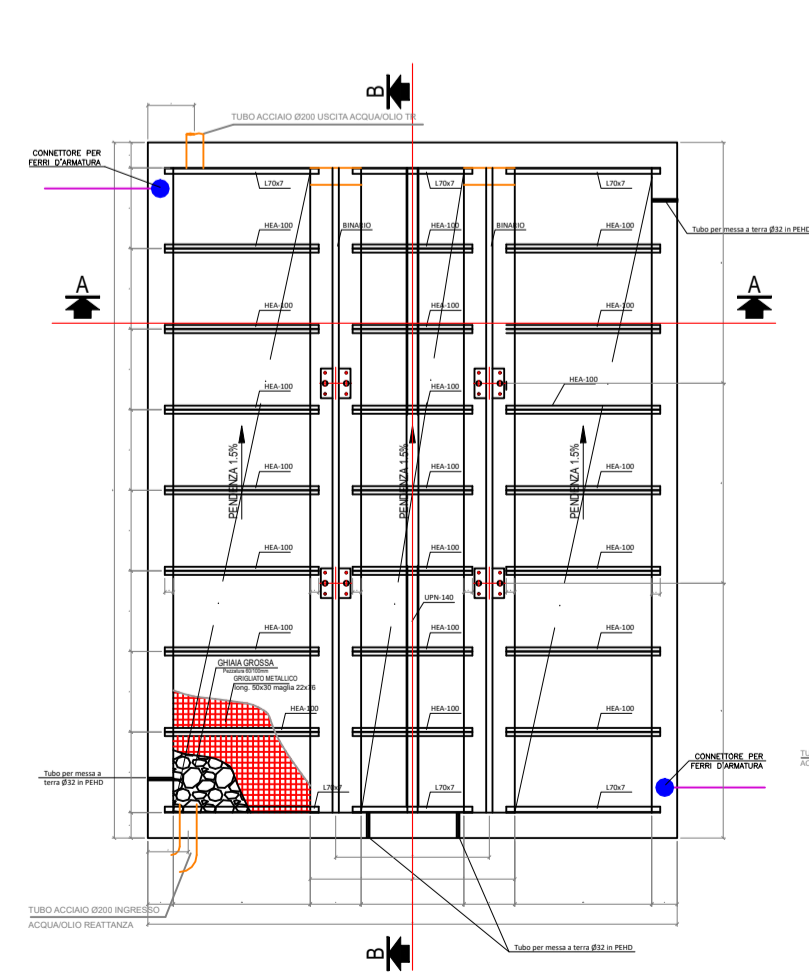
CONTROPIASTRE PER STRUTTURE TUBOLARI



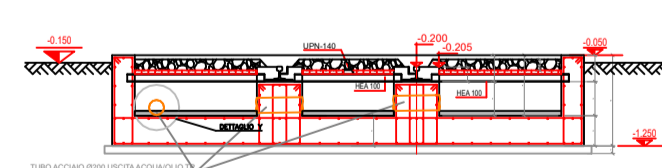
A13 - CASTELLETTO ARRIVO CAVI MT



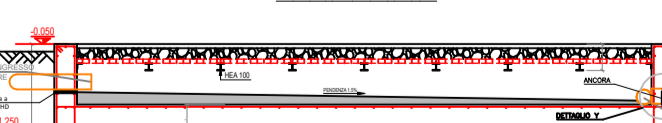
FONDAZIONE TRASFORMATORE - PIANTE



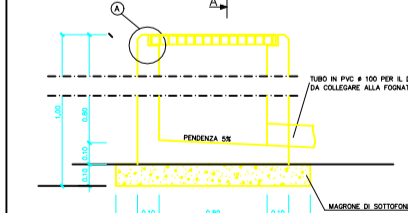
SEZIONE A-A



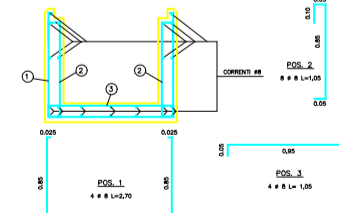
SEZIONE B-B



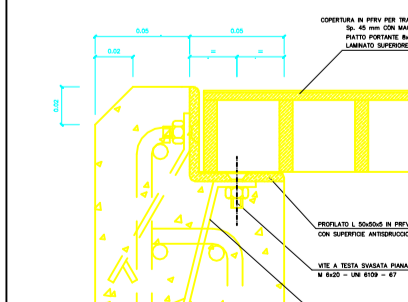
SEZIONE TRASVERSALE CUNICOLO CAVI AT



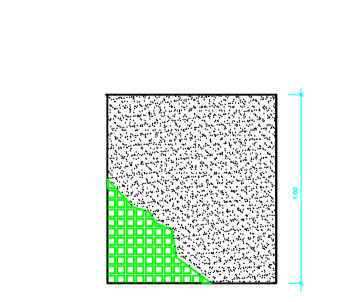
ARMATURA CUNICOLO CAVI AT



PARTICOLARE "A"



COPERTURA PRPV PER TRAFFICO MEDIO PESANTE



MINISTERO DELLA TRANSIZIONE ECOLOGICA
 Direzione Generale per la Crescita Sostenibile e la qualità dello Sviluppo
 Divisione V - Sistemi di Valutazione Ambientale

REGIONE PUGLIA

PROVINCIA DI B.A.T.

SPINAZZOLA
 56.307 kWp

METKA
 METKA EGN

Progettazione e coordinamento: dott. arch. Roberto CARLUCCIO
 via Nino Bixio 60/b
 72023 Mesagne (BR) - Italy

Studio Geologico: dott. geol. Luisiana SERRAVALLE
 via Puglie n° 1
 72027 S. Pietro Vernotico (BR) - Italy

Studio Agronomico: dott. Alessandro COLUCCI
 via Monte Sarago n° 3
 72017 Ostuni (BR) - Italy

Prova. Impianto fotovoltaico: BFP
 via Napoli n° 363/I
 70132 Bari - Italy

Prova. Cavidotto e sottostazione: 3E Ingegneria srl
 via G. Volpe n° 92
 56121 Pisa - Italy

Studio Idraulico: RUWA srl
 acqua territorio energia
 via C. Pisacane n° 25F
 88100 Catanzaro - Italy

Progetto di un impianto fotovoltaico di 56.307 kWp nel comune di SPINAZZOLA

Opera: PTO, Opere di Utenza, Stazione di Utenza, Particolari costruttivi

Scala: ---

Revisione: 00/00/2021 (Elaborazione), 00/00/2021 (Verifica), 12/07/2021 (3E Ingegneria, Metka EGN)

Nota: I DIMENSIONI DELLE MASSE DEI SOLAI, DEI PROFILI E DEI NODI, SARANNO DI TIPO COMMERCIALE.

Nota: LE DIMENSIONI DELLE MASSE DEI SOLAI, DEI PROFILI E DEI NODI, SARANNO DI TIPO COMMERCIALE.