

TERMINAL CONTAINER D'ALTURA DI VENEZIA

Allegato Relazione Tecnica: Elaborati tecnici - Terminals
VOL. 02.1

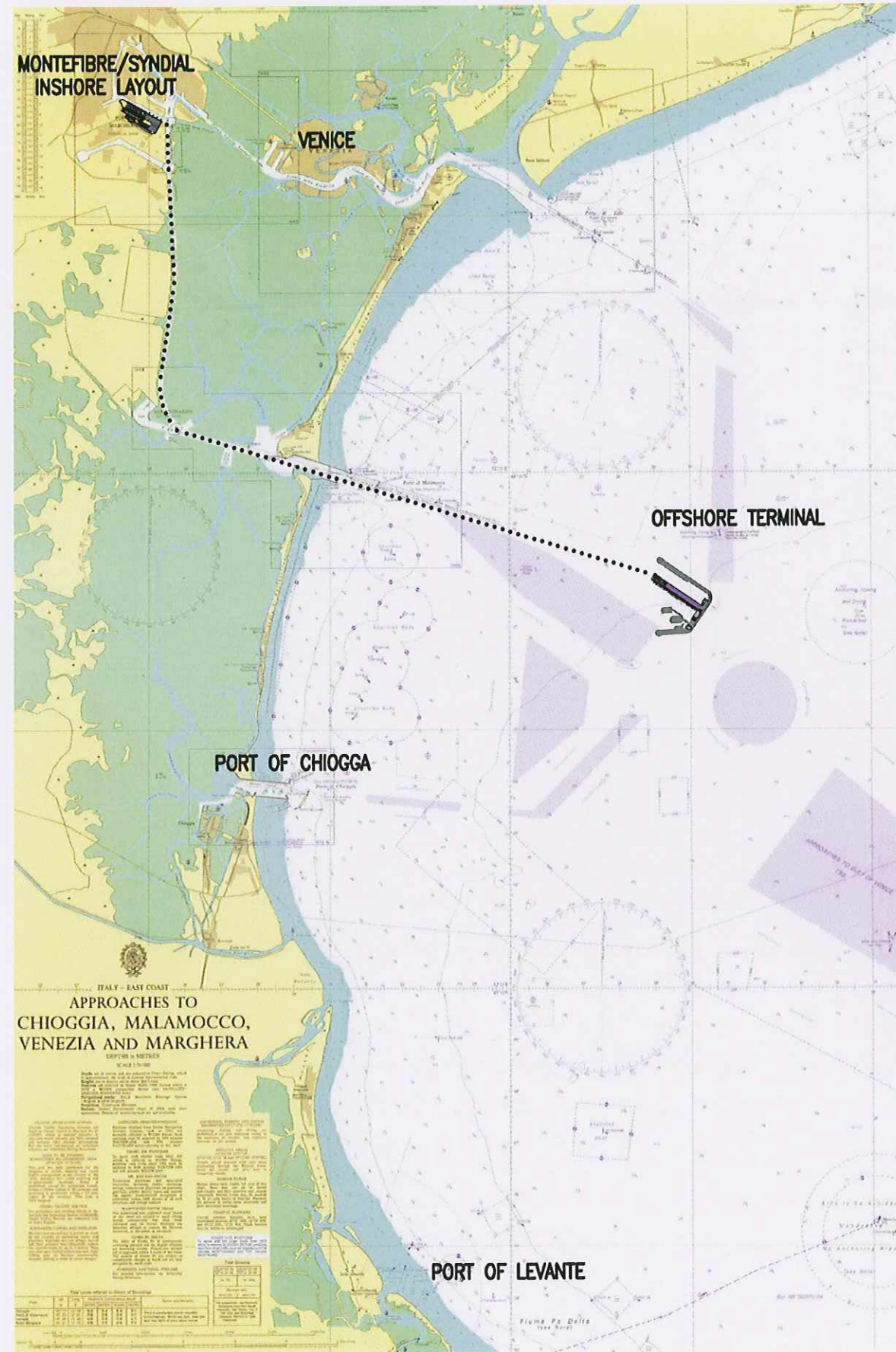
Venezia, 22 marzo 2012



AUTORITÀ PORTUALE
DI VENEZIA

DIREZIONE PIANIFICAZIONE STRATEGICA E SVILUPPO





P. Forodi

PRELIMINARY

Halcrow Group Limited
Burdens Park, Swindon, Wiltshire, SN4 0DD
Tel: +44 (0) 1793 812479 & Fax +44 (0) 1793 812089
www.halcrow.com



Client
Venice Newport Container and
Logistics S.pA
Santa Maria, Fabbriato 13 -30123

Notes
Bathymetry reproduced from admiralty
chart 5011 dated 10 of May 2007

Venice Container Terminals Logistics Study

Legend
Waterway link

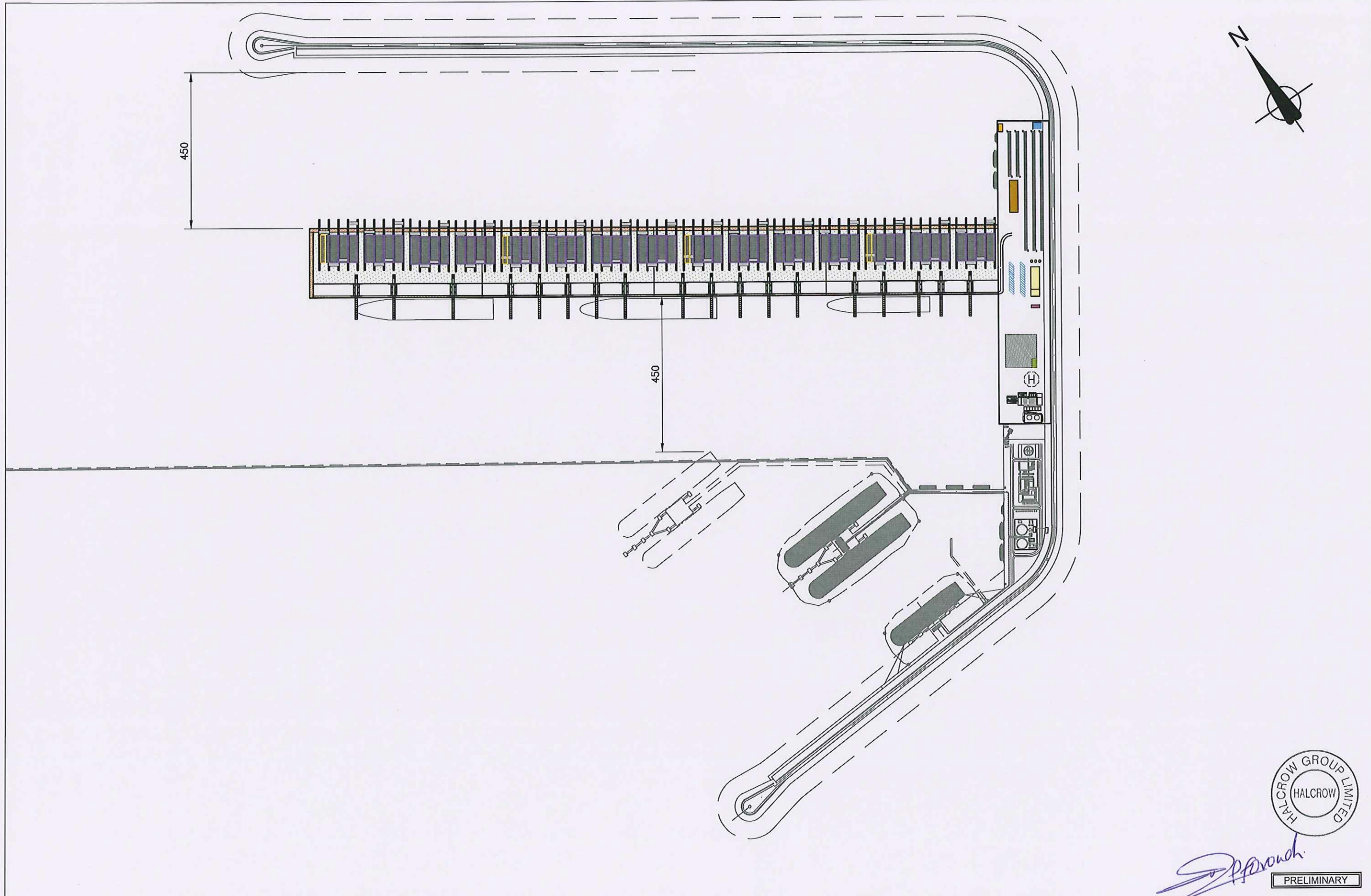
Rev	By	Crtd	Apprvd	Date	Description
0	JS	-	-	-	Drawn layout

Drawing

Overview Location Plan

Drawn by: Joanna Adamik-Bragulim	Date: 03.11.2011
Checked by: Namnurul Julia	Date: 07.12.11
Approved by: <i>P. Forodi</i>	Date: -
Drawing No: GVCTLS/001	Revision: 0
Drawing Scale: 1:200000	

Drawing No: GVCTLS/001 Date: 03.11.2011 11:52 am



Signature
PRELIMINARY

Halcrow Group Limited
 Building Park, Swindon, Wiltshire SN4 0GD
 Tel: +44 (0) 1793 812479 & Fax +44 (0) 1793 812089
 www.halcrow.com

Client
Venice Newport Container and Logistics S.pA
 Santa Maria, Fabbriato 13 -30123

Venice Container Terminals Logistics Study

Notes
 Breakwater and fuel berth layout indicative and subject to study by others

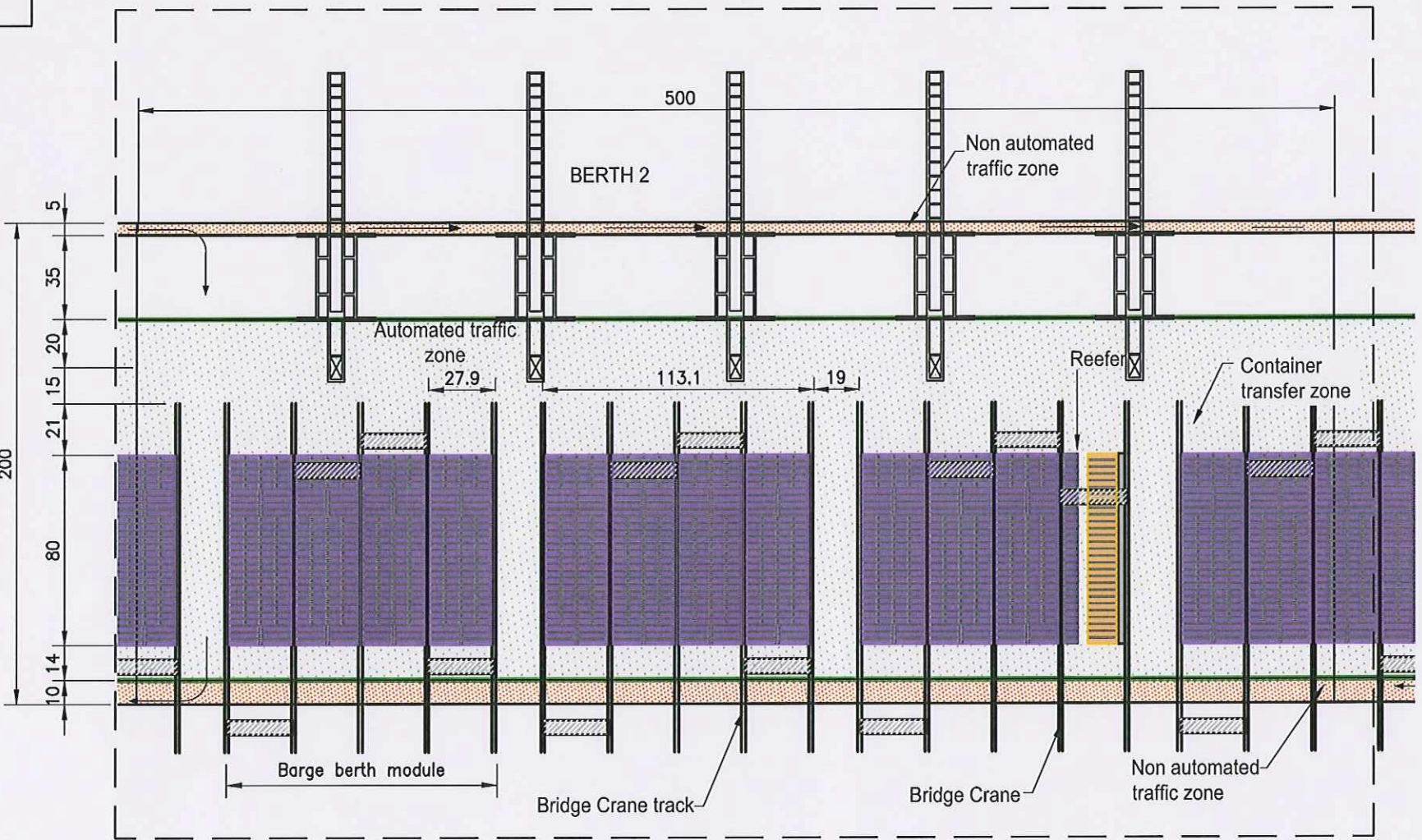
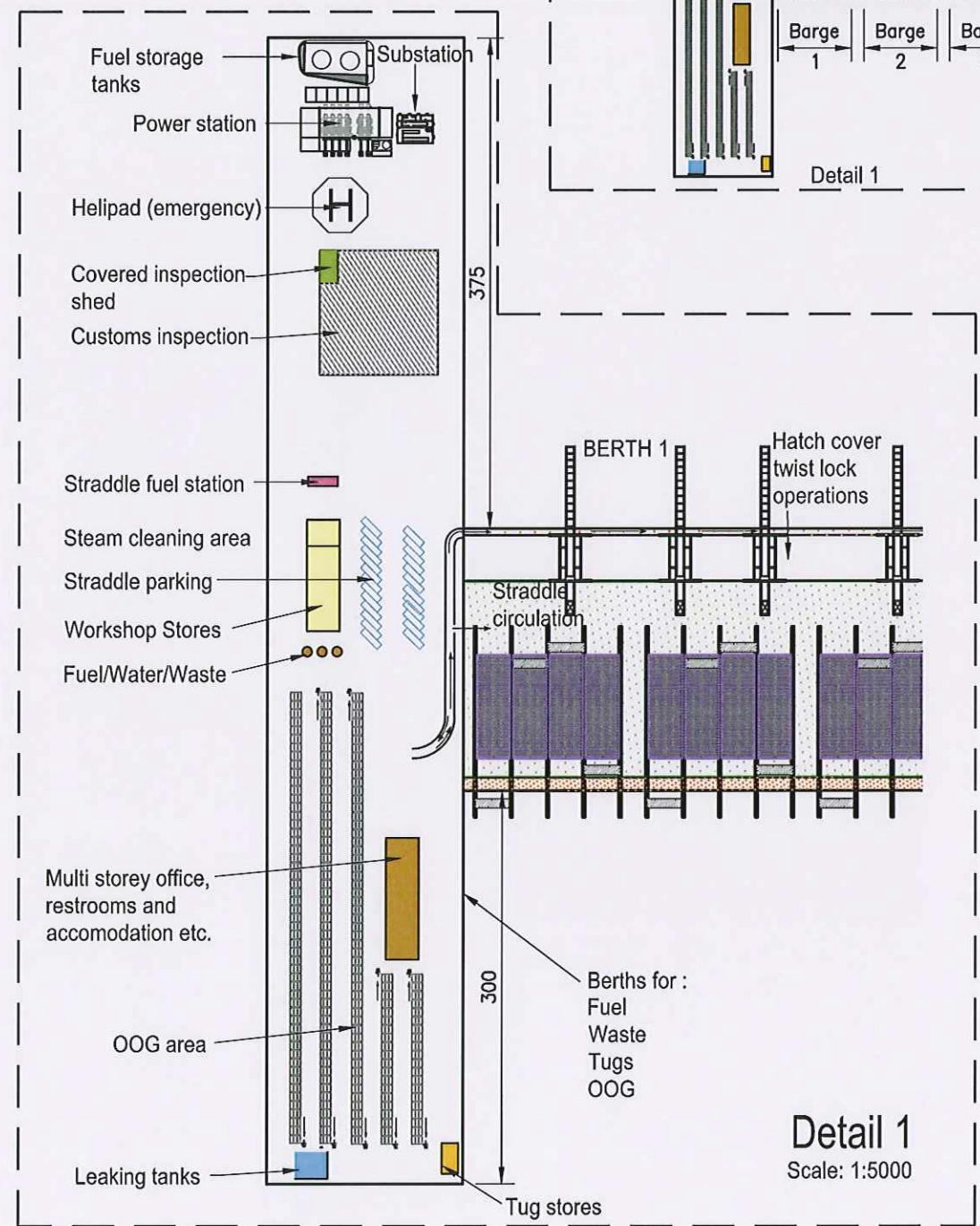
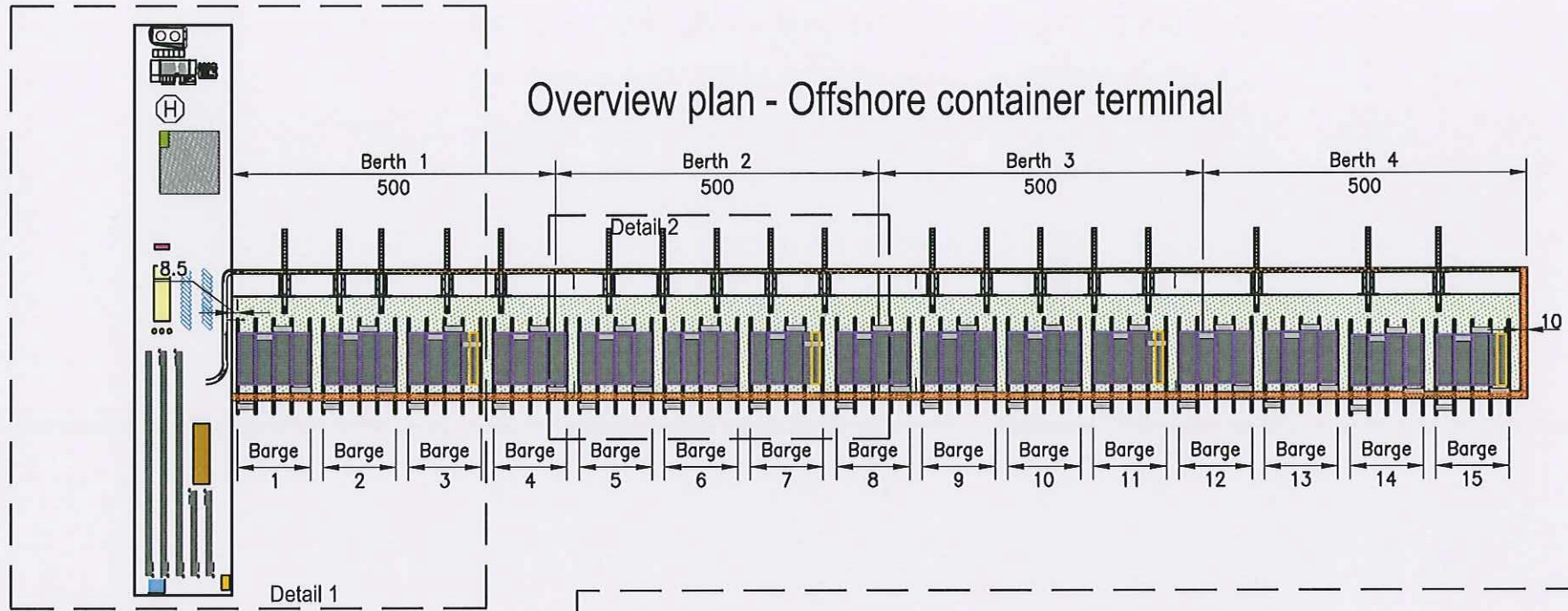
Rev	By	Crtd	Apprvd	Date	Description
0	JAB	-	-	-	Overall layout

Drawing
Overview of Offshore Terminal

Drawn by: Joanna Adamik-Braguin	Date: 07.12.11
Checked by: Namimul Julia	Date: 08.12.11
Approved by: <i>P. Forouchi</i>	Date: -
Drawing No. GVCTLS/002	Revision 0
Drawing Scale: 1:10,000	

Venice Newport Container and Logistics S.pA - Project GVCTLS - Drawing GVCTLS_002.dwg
 User and Plot Date: 18/12/2011 11:12:12 am

Overview plan - Offshore container terminal



A. Forandi
PRELIMINARY

Halcrow Group Limited
Burderop Park, Epsom, Wilshire, S14 0GD
Tel: +44 (0) 1793 812479 & Fax: +44 (0) 1793 812069
www.halcrow.com

Client
Venice Newport Container and Logistics S.p.A
Santa Maria, Fabbriato 13 -30123

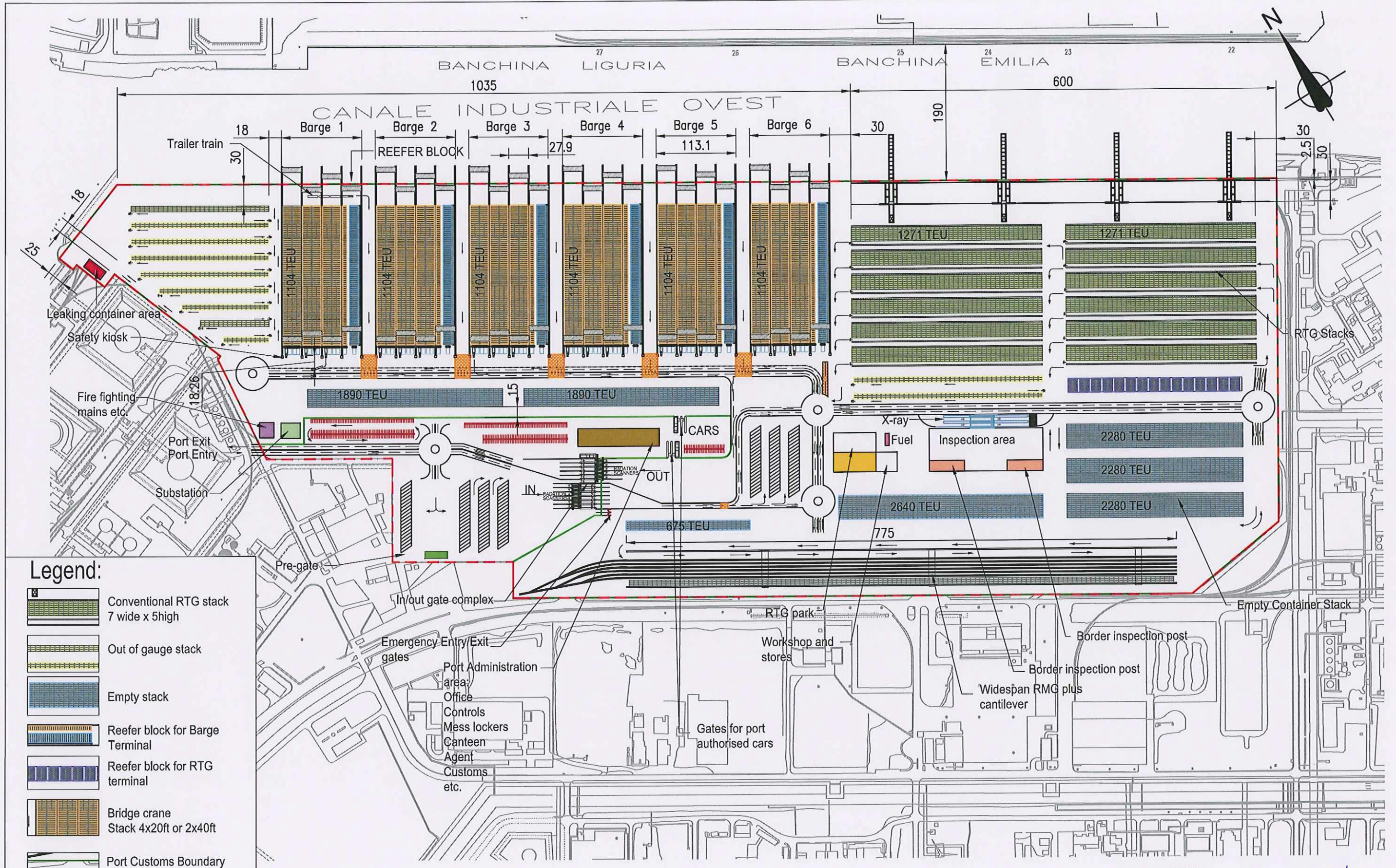
Notes
Venice Container Terminals Logistics Study

Rev	By	Chkd	Apprvd	Date	Description
0	AS	-	-	-	Offrev issue

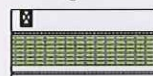








Drawing
Offshore layout

Drawn by: Joanna Adamik-Bragim
Checked by: Namimuri Julia
Approved by: *A. Forandi*
Drawing No.: GVCTLS/003
Revision: 0
Date: 03.11.2011

Drawing to path & name: S:\CAD\GIS\Projects\GVCTLS\Drawings\GVCTLS_003.dwg
User and Print Date: 12/03/2011 11:21:12 am



Legend:

-  Conventional RTG stack
7 wide x 5 high
-  Out of gauge stack
-  Empty stack
-  Reefer block for Barge Terminal
-  Reefer block for RTG terminal
-  Bridge crane Stack
4x20ft or 2x40ft
-  Port Customs Boundary
-  Port Boundary
-  Temporary stack

Halcrow Group Limited
Burdens Park, Burdons, Wiltshire, SN4 0SD
Tel: +44 (0) 1793 812479 & Fax +44 (0) 1793 812089
www.halcrow.com

Client
Venice Newport Container and Logistics S.pA
Santa Maria, Fabbriato 13 -30123

Venice Container Terminals Logistics Study

Rev	By	Chd	Apprv	Date	Description
0	JS	-	-	-	Initial



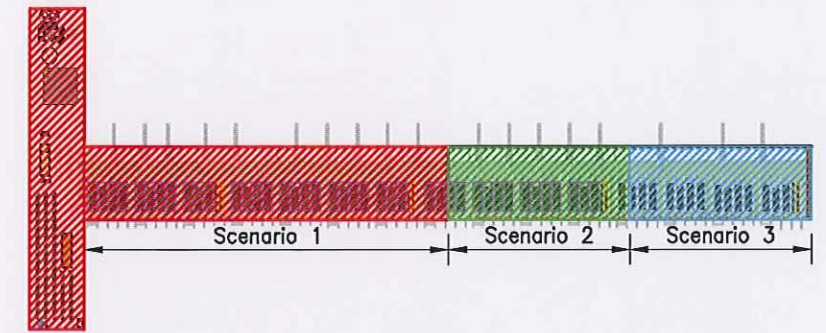
Inshore layout at Monte/Syndial

Drawn by: Joanna Adami-Breguin	Date: 03.11.2011
Checked by: Nannuri Julia	Date: -
Approved by: <i>A. Toroudi</i>	Date: -
Drawing No: GVCTLS/004	Revision: 0
Drawing Scale: 1:10,000	

Drawing No: GVCTLS/004
 Date: 03.11.2011
 Scale: 1:10,000
 Author: JS
 Checker: Nannuri Julia
 Approver: A. Toroudi

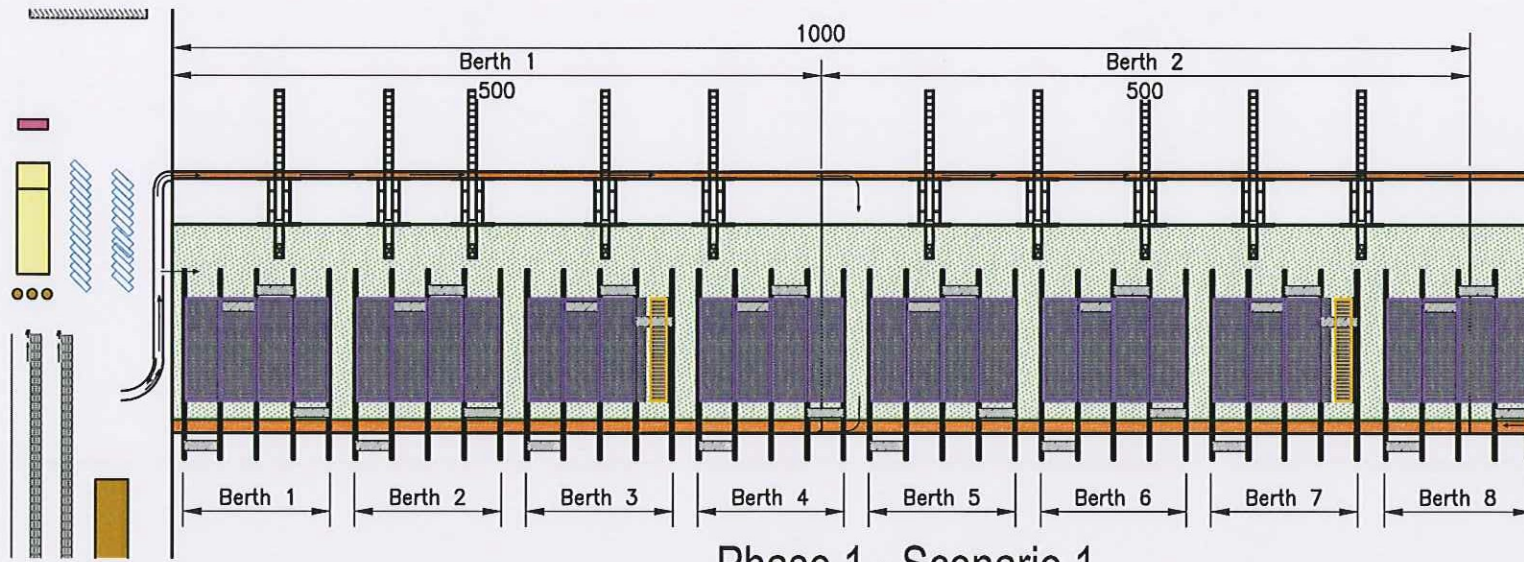
Overview plan - Offshore container terminal

No of mainline berths	2
No of STS crane	7
No of barge berth	8
No of bridges cranes provided	32
Container capacity provided	12852 TEU
Reefer capacity provided	506 TEU



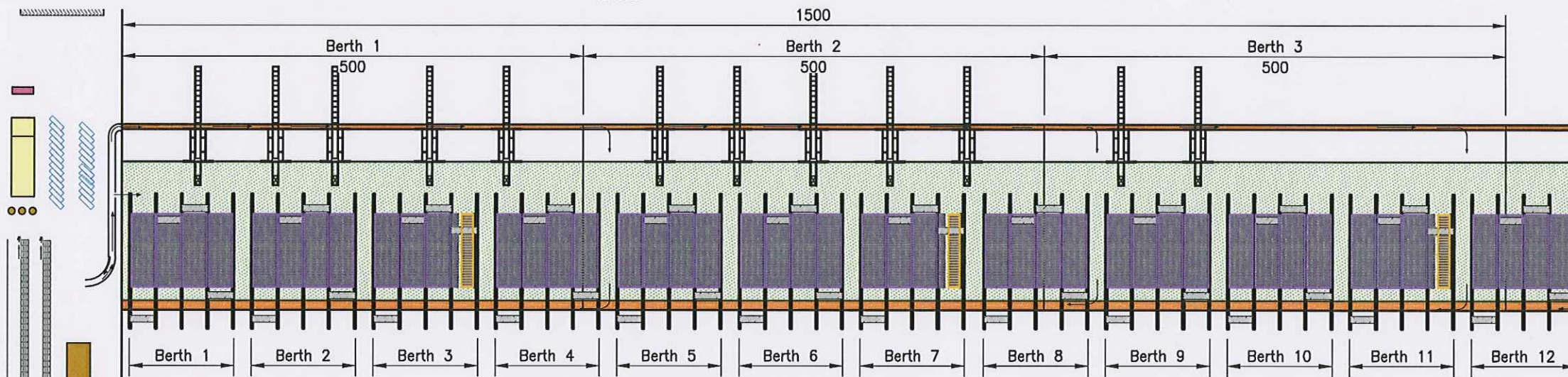
N.T.S

No of mainline berths	3
No of STS Crane	12
No of barge berth	12
No of bridges cranes provided	48
Container capacity provided	19278 TEU
Reefer capacity provided	759 TEU



Phase 1 - Scenario 1

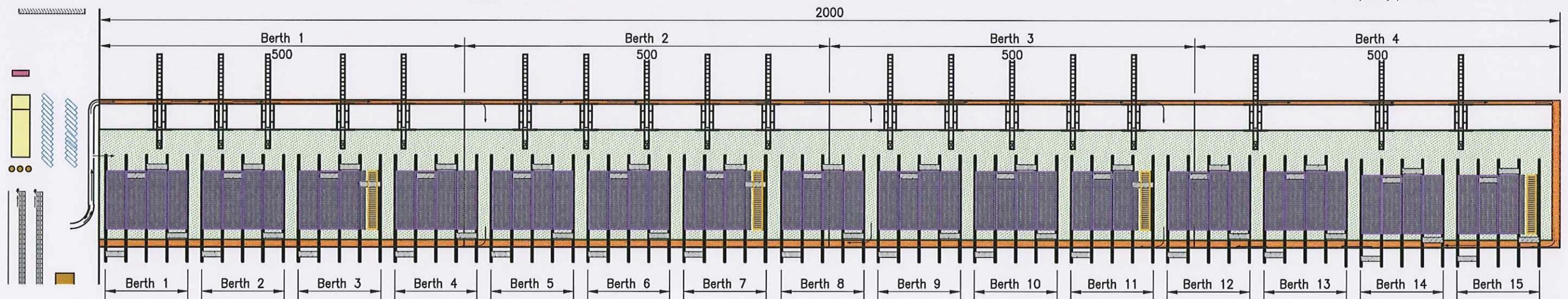
N.T.S



Phase 2 - Scenario 2

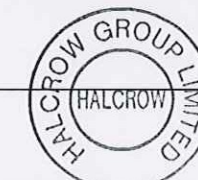
N.T.S

No of mainline berths	4
No of STS Crane	18
No of barge berth	15
No of bridges cranes provided	60
Container capacity provided	25704 TEU
Reefer capacity provided	1012 TEU



Phase 3 - Scenario 3

N.T.S



Joanna Adamski-Bragim

PRELIMINARY

Halcrow Group Limited
Bardonia Park, Sandown, Wiltshire, SN4 0DD
Tel: +44 (0) 1793 812479 & Fax +44 (0) 1793 812089
www.halcrow.com

Client
Venice Newport Container and Logistics S.pA
Santa Maria, Fabbriato 13-30123

Notes

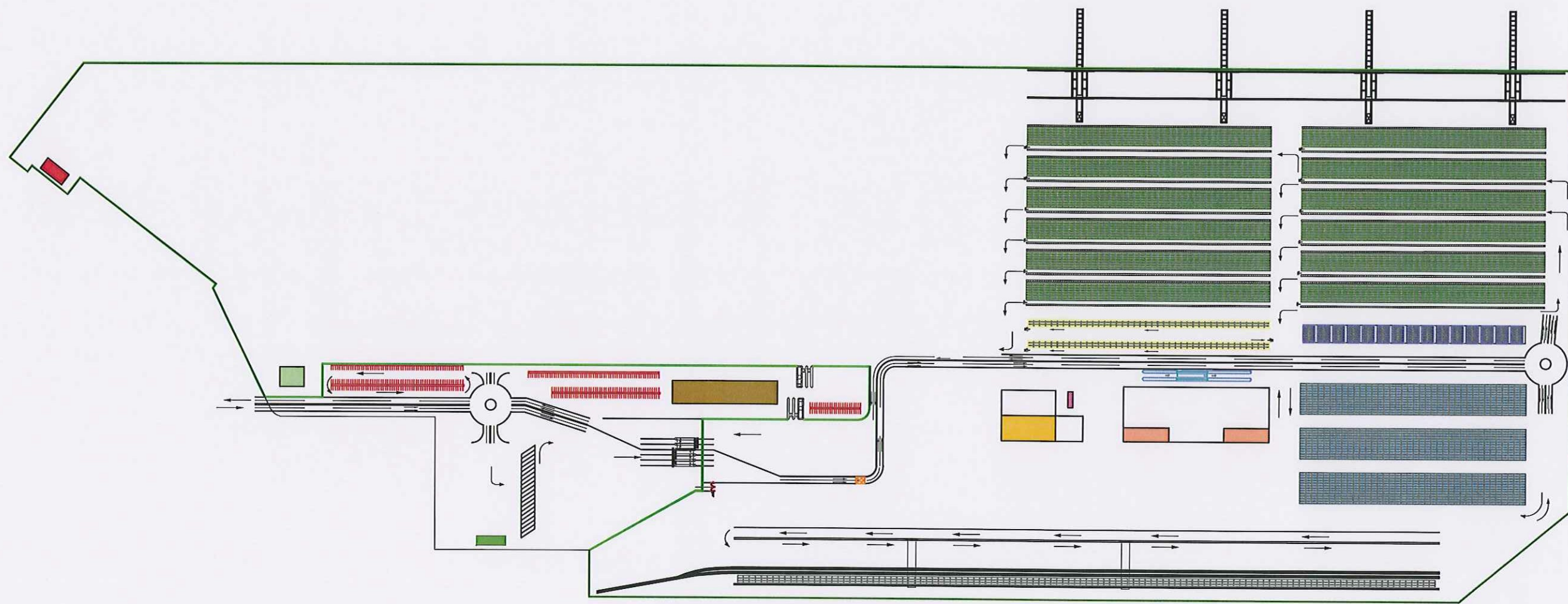
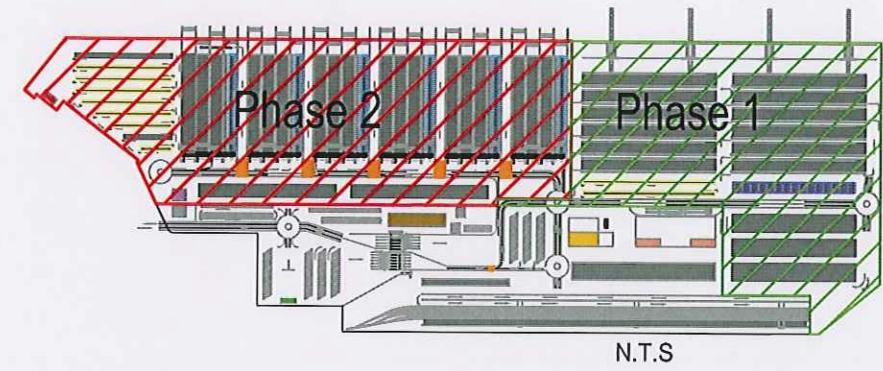
Venice Container Terminals Logistics Study

Rev	By	Chkd	Apprd	Date	Description
0					

Drawing
Phasing at Offshore Terminal by Scenario

Drawn by: Joanna Adamski-Bragim	Date: 03.11.2011
Checked by: Nammuri Julia	Date: -
Approved by: <i>et Forouzi</i>	Date: -
Drawing No. GVCTLS/005	Revision 0
Drawing Scale: N.T.S	

Drawing file path & name: C:\Users\julia\Documents\GVCTLS\GVCTLS_005.dwg User and Plot Date: 19/12/2011 - 12:12 pm



Phase 1 - Scenario 0
1:5000



Handwritten signature
PRELIMINARY

Halcrow Group Limited
Burlingame Park, Gainsborough, Lincolnshire, LN4 9DD
Tel: +44 (0) 1793 812479 & Fax +44 (0) 1793 812089
www.halcrow.com

Client
Venice Newport Container and Logistics S.p.A
Santa Maria, Fabbriato 13 -30123

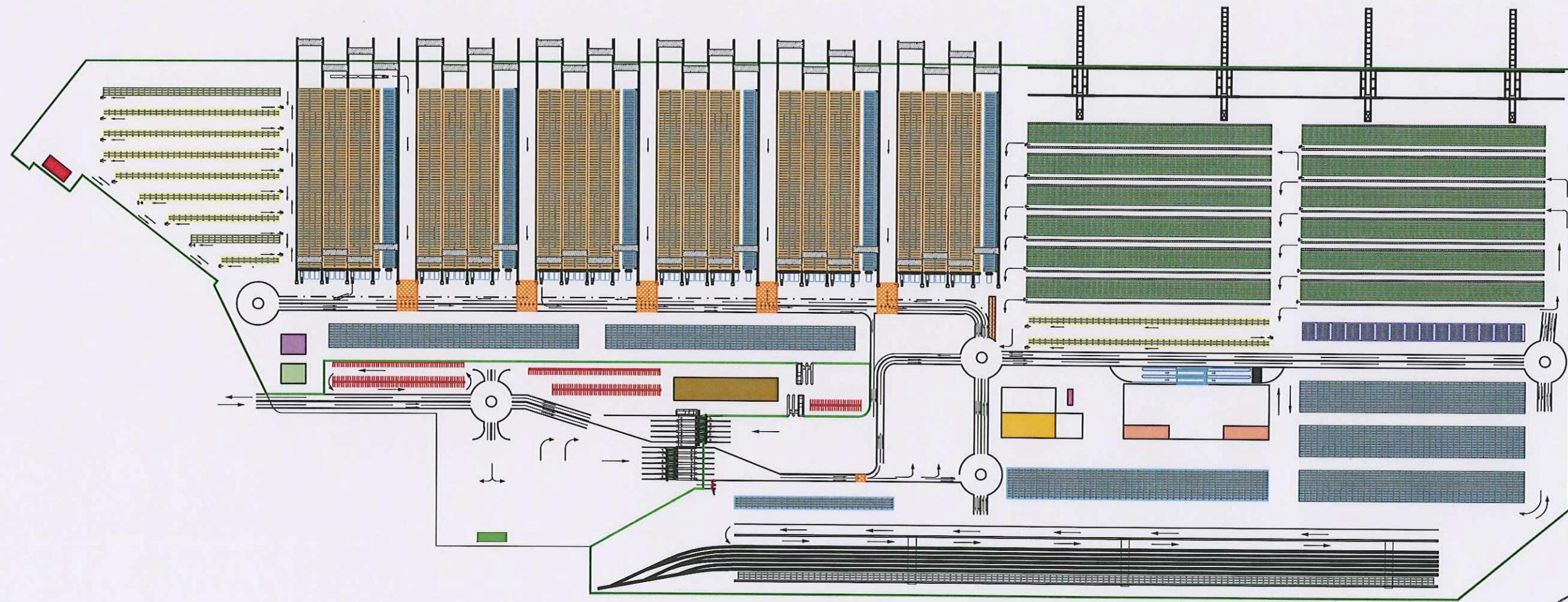
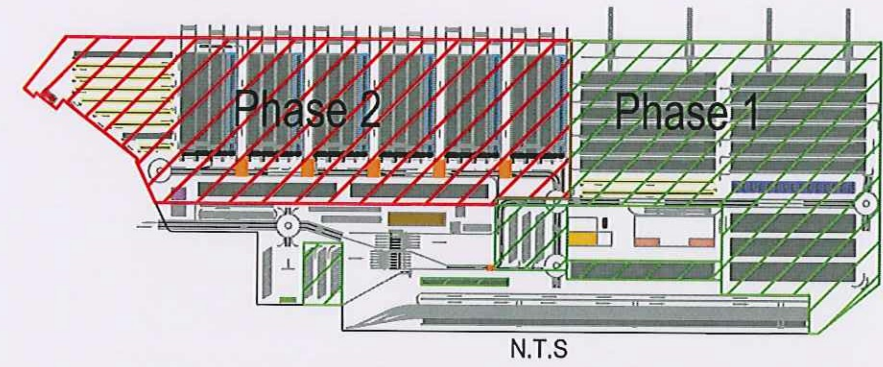
Notes
Venice Container Terminals Logistics Study

Rev	By	Chkd	Apprvd	Date	Description
0	JAS	-	-	-	Original

Drawing
Phasing at Inshore Terminal Monte/Syndial by Scenario - Scenario 0

Drawn by: Joanna Adamik-Bragim Date: 03.11.2011
Checked by: Naminuri Julia Date: -
Approved by: *R. Roroud* Date: -
Drawing No. GVCTLS/006 Revision 0
Drawing Scale: 1:5000

Drawing No. GVCTLS/006 Rev. 0
 Project: Venice Container Terminals Logistics Study
 User and Plot Date: 19/02/2011 - 8:12 am



Phase 2 - Scenario 1,2 and 3

1:5000



J. Forandi

PRELIMINARY

Halcrow Group Limited
Bardings Park, Salford, Wiltshire, SN4 0GD
Tel: +44 (0) 1793 812479 & Fax +44 (0) 1793 812089
www.halcrow.com



Client
Venice Newport Container and
Logistics S.pA
Santa Maria, Fabbriato 13 -30123

Venice Container Terminals Logistics Study

Notes

Rev	By	Crtd	Apprvd	Date	Description
0	JS	-	-	-	Office Issue

Drawing

Phasing at Inshore Terminal
Monte/Syndial
by Scenario - Scenario 1,2,3

Drawn by: Joanna Adamik-Bragim	Date: 03.11.2011
Checked by: Naminur Jula	Date: -
Approved by: <i>J. Forandi</i>	Date: -
Drawing No. GVCTLS/007	Revision 0
Drawing Scale: 1:5000	

Drawing for path & name: C:\CAD\GIS\Projects\GVCTLS\Drawings\GVCTLS_007.dwg
 Author: J. Adamik-Bragim
 Date: 15/12/2011 - 12:12 am
 User: jrb