

REGIONE MOLISE

**PROVINCIA DI CAMPOBASSO
COMUNE DI MONTENERO DI BISACCIA
Contrada Montebello snc**

Impianto Agro – Fotovoltaico APIDOR

PROGETTO DEFINITIVO

Realizzazione impianto agro fotovoltaico denominato “APIDOR” con potenza di picco 12.480 kWp e potenza di immissione in rete 9.588 kW comprensivo delle opere di connessione alla rete di distribuzione 20kV

ELABORATO DOCUMENTAZIONE FOTOGRAFICA		DATA 30/11/2021
N° PAGINE: 56	SCALA:-	LIVELLO PROG.: PD
CODICE ELABORATO: RS06REL0020A0		ID E-DISTRIBUZIONE: T0737896
VALUTAZIONE DI IMPATTO AMBIENTALE		

REVISIONI

Rev.	Data	Descrizione	Redatto	Verificato	Approvato
00	30/11/2021	EMISSIONE	GEOL. A. CACIOPPO	ING. F. MULÈ	COSTEN

<p>Proponente</p> <p>QUANTUM PV 03 SRL Via Mannelli n° 5 00019 Tivoli (RM) P.IVA 15940861006 PEC: quantumpv03@legalmail.it</p>	<p>Rilevamento, progettazione geologica ed ambientale: Geoingegneria s.e.t s.r.l.s. Via G. Marconi 127 – 91014 Castellammare del Golfo P.iva : 02806000812</p> <p>IL TECNICO INCARICATO</p>  
<p>Progettazione</p>  <p>Costen srl Via Ninni Cassarà 15 91011 Alcamo (TP) C.F./P.IVA: 02804040810 info@costen.it</p>	<p>Spazio riservato per le approvazioni</p>

Le opere previste nel presente progetto sono di pubblica utilità



Bearings:

Latitude	42° 1' 52" N	Compass	192.1°
Longitude	14° 44' 54" E	Pitch	6.4°
Altitude	31m	Roll	-0.7°

Comment:

ENEL Primary Cabin 150/20 kV at 3 km



Bearings:

Latitude	42° 1' 52" N	Compass	146.0°
Longitude	14° 44' 54" E	Pitch	3.2°
Altitude	31m	Roll	2.4°

Comment:



Bearings:

Latitude	42° 1' 52" N	Compass	221.7°
Longitude	14° 44' 53" E	Pitch	1.6°
Altitude	32m	Roll	-0.0°

Comment:



Bearings:

Latitude	42° 1' 52" N	Compass	249.0°
Longitude	14° 44' 53" E	Pitch	4.2°
Altitude	33m	Roll	0.7°

Comment:



Bearings:

Latitude	42° 1' 53" N	Compass	126.9°
Longitude	14° 44' 55" E	Pitch	2.2°
Altitude	31m	Roll	-0.8°

Comment:

MV Line going towards the direction of land

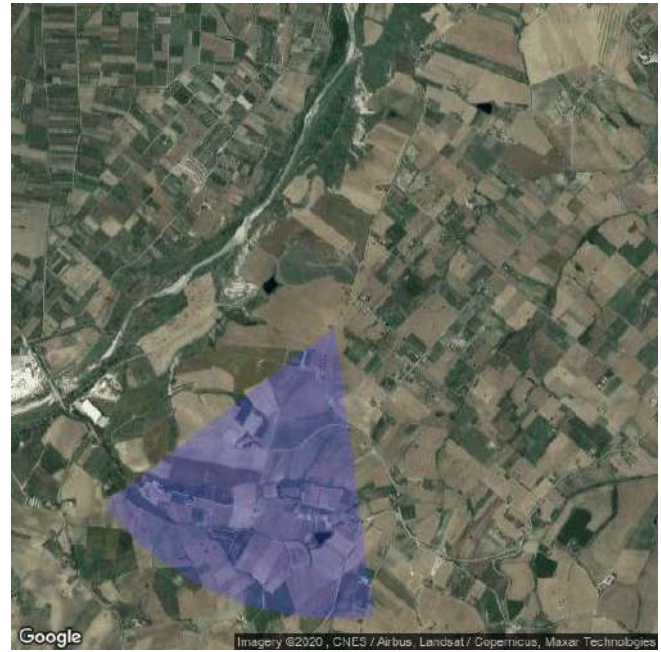


Bearings:

Latitude	42° 1' 15" N	Compass	359.4°
Longitude	14° 47' 1" E	Pitch	-0.3°
Altitude	89m	Roll	-1.2°

Comment:

On the north boundary of land there is already a pv plant



Bearings:

Latitude	42° 1' 15" N	Compass	202.4°
Longitude	14° 47' 2" E	Pitch	1.2°
Altitude	90m	Roll	-0.3°

Comment:

On the east boundary of land there is a municipality road (contrada Montebello) road in good condition and close to SP55



Bearings:

Latitude	42° 1' 15" N	Compass	21.0°
Longitude	14° 47' 3" E	Pitch	1.4°
Altitude	90m	Roll	-0.1°

Comment:



Bearings:

Latitude	42° 1' 15" N	Compass	242.0°
Longitude	14° 47' 3" E	Pitch	0.3°
Altitude	90m	Roll	-0.6°

Comment:

Old building and ruins just excluded from the available land



Bearings:

Latitude	42° 1' 16" N	Compass	283.5°
Longitude	14° 47' 3" E	Pitch	-1.4°
Altitude	89m	Roll	0.3°

Comment:

The soil is loose and plowed. The land is clear and clean. In the west border there is an artificial lake and a landslide that shows sand under the surface



Bearings:

Latitude	42° 1' 16" N	Compass	290.1°
Longitude	14° 47' 3" E	Pitch	-0.2°
Altitude	91m	Roll	-0.4°

Comment:

There is a gas duct all along the east boarder



Bearings:

Latitude	42° 1' 16" N	Compass	287.4°
Longitude	14° 47' 3" E	Pitch	0.6°
Altitude	90m	Roll	-1.0°

Comment:

Land is slightly hilly with gentle slopes



Bearings:

Latitude	42° 1' 18" N	Compass	231.3°
Longitude	14° 47' 4" E	Pitch	1.9°
Altitude	91m	Roll	-1.6°

Comment:

There are 14 trees along the east boundary



Bearings:

Latitude	42° 1' 19" N	Compass	227.4°
Longitude	14° 47' 5" E	Pitch	0.3°
Altitude	91m	Roll	0.5°

Comment:



Bearings:

Latitude	42° 1' 20" N	Compass	241.7°
Longitude	14° 47' 5" E	Pitch	1.3°
Altitude	92m	Roll	-0.3°

Comment:



Bearings:

Latitude	42° 1' 20" N	Compass	240.1°
Longitude	14° 47' 6" E	Pitch	1.1°
Altitude	94m	Roll	0.1°

Comment:



Bearings:

Latitude	42° 1' 21" N	Compass	231.1°
Longitude	14° 47' 6" E	Pitch	0.7°
Altitude	95m	Roll	-0.7°

Comment:



Bearings:

Latitude	42° 1' 22" N	Compass	253.2°
Longitude	14° 47' 7" E	Pitch	3.6°
Altitude	95m	Roll	-1.2°

Comment:



Bearings:

Latitude	42° 1' 22" N	Compass	228.9°
Longitude	14° 47' 7" E	Pitch	2.8°
Altitude	97m	Roll	-0.6°

Comment:



Bearings:

Latitude	42° 1' 23" N	Compass	218.5°
Longitude	14° 47' 7" E	Pitch	-0.4°
Altitude	97m	Roll	-0.1°

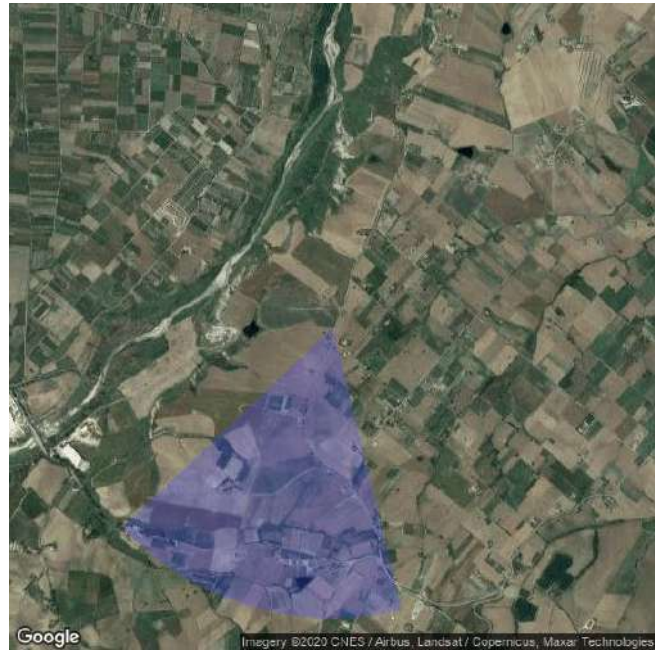
Comment:



Bearings:

Latitude	42° 1' 24" N	Compass	270.3°
Longitude	14° 47' 7" E	Pitch	-8.6°
Altitude	97m	Roll	-0.4°

Comment:



Bearings:

Latitude	42° 1' 24" N	Compass	196.4°
Longitude	14° 47' 7" E	Pitch	0.2°
Altitude	96m	Roll	0.7°

Comment:



Bearings:

Latitude	42° 1' 23" N	Compass	229.5°
Longitude	14° 47' 7" E	Pitch	-0.6°
Altitude	95m	Roll	1.1°

Comment:



Bearings:

Latitude	42° 1' 23" N	Compass	195.1°
Longitude	14° 47' 5" E	Pitch	-0.1°
Altitude	92m	Roll	1.5°

Comment:



Bearings:

Latitude	42° 1' 24" N	Compass	238.4°
Longitude	14° 47' 4" E	Pitch	0.1°
Altitude	88m	Roll	1.0°

Comment:



Bearings:

Latitude	42° 1' 24" N	Compass	275.2°
Longitude	14° 47' 3" E	Pitch	-0.3°
Altitude	86m	Roll	0.5°

Comment:



Bearings:

Latitude	42° 1' 23" N	Compass	260.9°
Longitude	14° 46' 60" E	Pitch	-0.1°
Altitude	78m	Roll	-0.1°

Comment:



Bearings:

Latitude	42° 1' 22" N	Compass	223.0°
Longitude	14° 46' 58" E	Pitch	-0.5°
Altitude	75m	Roll	1.4°

Comment:



Bearings:

Latitude	42° 1' 21" N	Compass	140.9°
Longitude	14° 46' 57" E	Pitch	0.9°
Altitude	75m	Roll	0.9°

Comment:



Bearings:

Latitude	42° 1' 20" N	Compass	290.1°
Longitude	14° 46' 56" E	Pitch	0.3°
Altitude	73m	Roll	-1.2°

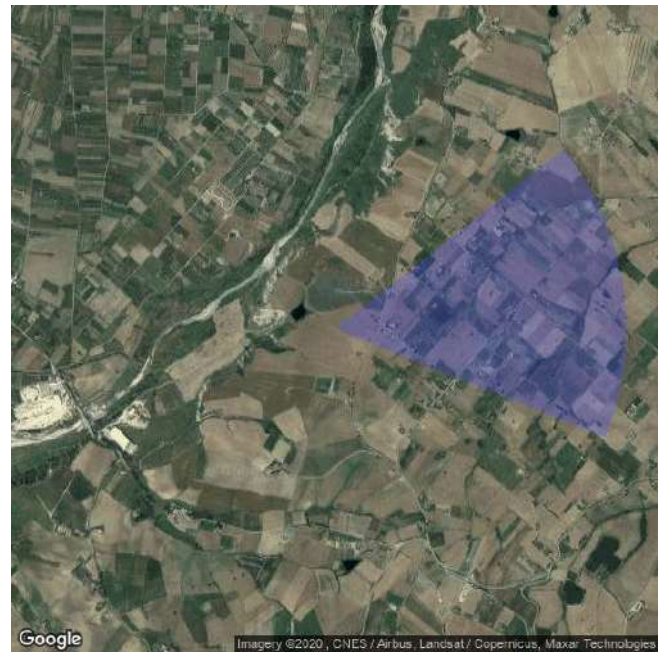
Comment:



Bearings:

Latitude	42° 1' 20" N	Compass	255.0°
Longitude	14° 46' 55" E	Pitch	0.6°
Altitude	70m	Roll	0.8°

Comment:



Bearings:

Latitude	42° 1' 20" N	Compass	81.8°
Longitude	14° 46' 55" E	Pitch	0.5°
Altitude	70m	Roll	-1.5°

Comment:



Bearings:

Latitude	42° 1' 20" N	Compass	162.2°
Longitude	14° 46' 55" E	Pitch	0.6°
Altitude	70m	Roll	-0.2°

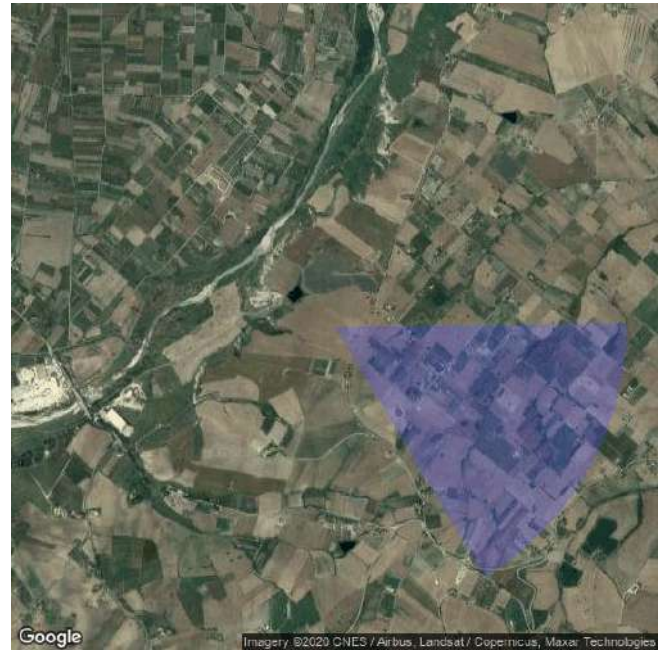
Comment:



Bearings:

Latitude	42° 1' 18" N	Compass	233.8°
Longitude	14° 46' 55" E	Pitch	1.7°
Altitude	75m	Roll	0.7°

Comment:



Bearings:

Latitude	42° 1' 17" N	Compass	119.2°
Longitude	14° 46' 56" E	Pitch	0.2°
Altitude	80m	Roll	-1.0°

Comment:



Bearings:

Latitude	42° 1' 16" N	Compass	347.0°
Longitude	14° 46' 56" E	Pitch	0.2°
Altitude	82m	Roll	-2.3°

Comment:



Bearings:

Latitude	42° 1' 16" N	Compass	26.8°
Longitude	14° 46' 56" E	Pitch	0.2°
Altitude	81m	Roll	-1.5°

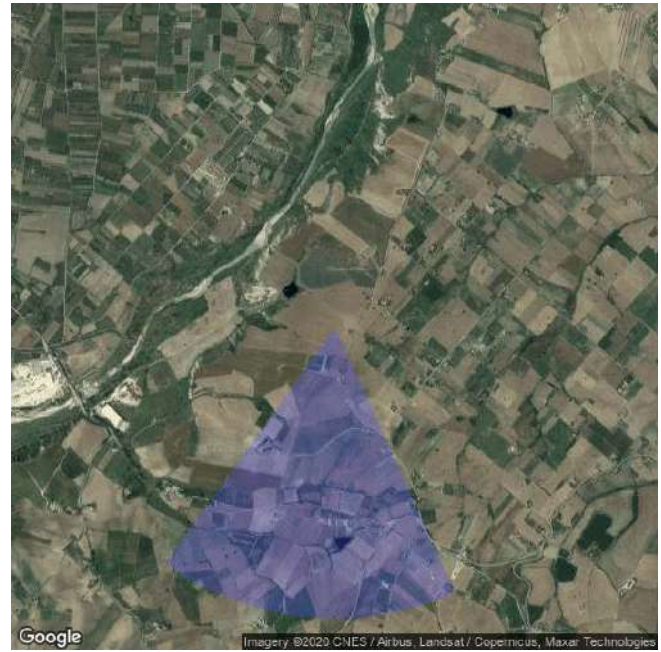
Comment:



Bearings:

Latitude	42° 1' 16" N	Compass	225.8°
Longitude	14° 46' 56" E	Pitch	0.7°
Altitude	82m	Roll	0.3°

Comment:



Bearings:

Latitude	42° 1' 16" N	Compass	185.7°
Longitude	14° 46' 57" E	Pitch	-0.0°
Altitude	83m	Roll	-0.6°

Comment:



Bearings:

Latitude	42° 1' 16" N	Compass	223.2°
Longitude	14° 46' 57" E	Pitch	-0.1°
Altitude	83m	Roll	0.4°

Comment:



Bearings:

Latitude	42° 1' 15" N	Compass	261.3°
Longitude	14° 46' 57" E	Pitch	-0.5°
Altitude	83m	Roll	0.2°

Comment:



Bearings:

Latitude	42° 1' 15" N	Compass	286.0°
Longitude	14° 46' 57" E	Pitch	-0.3°
Altitude	83m	Roll	-0.2°

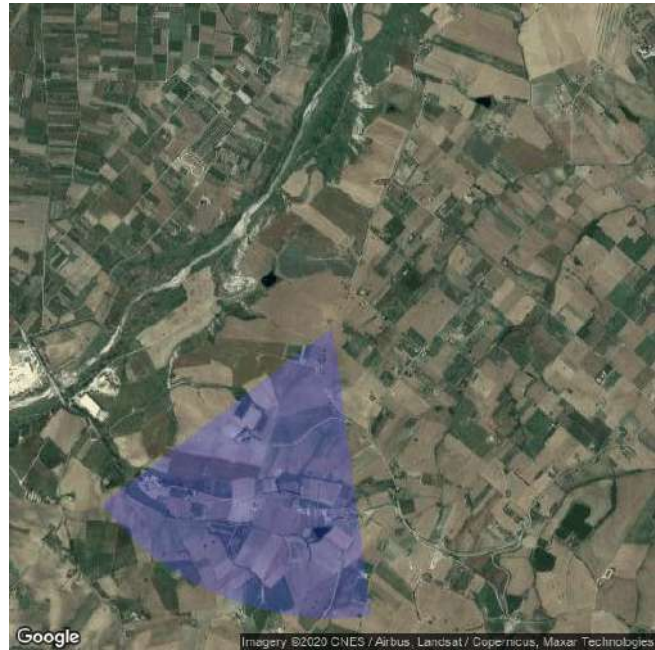
Comment:



Bearings:

Latitude	42° 1' 15" N	Compass	300.5°
Longitude	14° 46' 58" E	Pitch	-0.6°
Altitude	84m	Roll	-0.9°

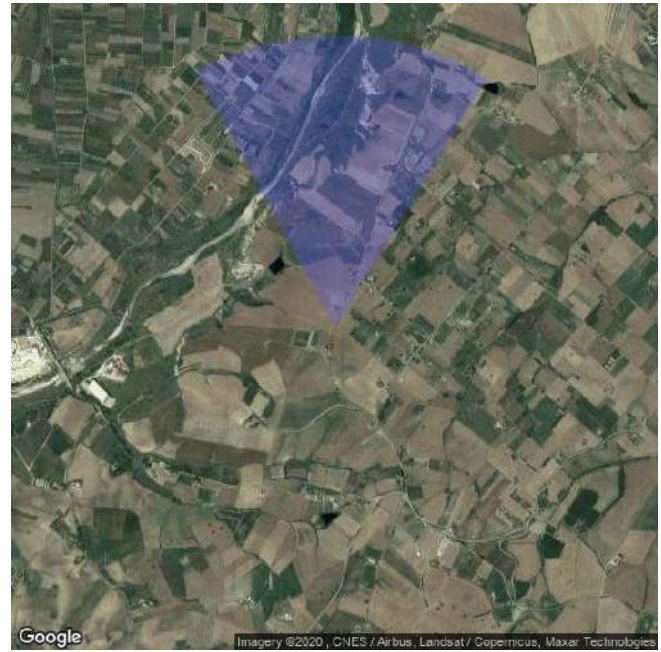
Comment:



Bearings:

Latitude	42° 1' 14" N	Compass	202.4°
Longitude	14° 47' 2" E	Pitch	1.4°
Altitude	90m	Roll	-1.1°

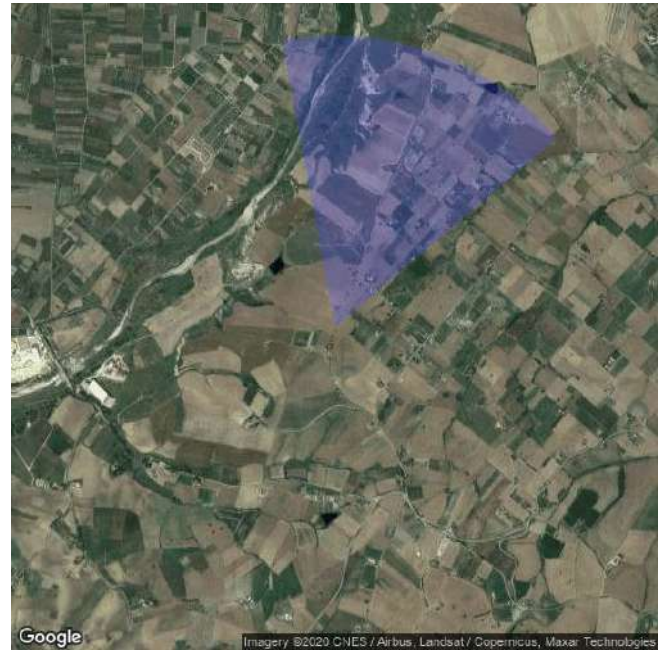
Comment:



Bearings:

Latitude	42° 1' 11" N	Compass	1.4°
Longitude	14° 47' 1" E	Pitch	16.4°
Altitude	89m	Roll	-1.4°

Comment:



Bearings:

Latitude	42° 1' 11" N	Compass	19.6°
Longitude	14° 47' 1" E	Pitch	-0.1°
Altitude	88m	Roll	-1.2°

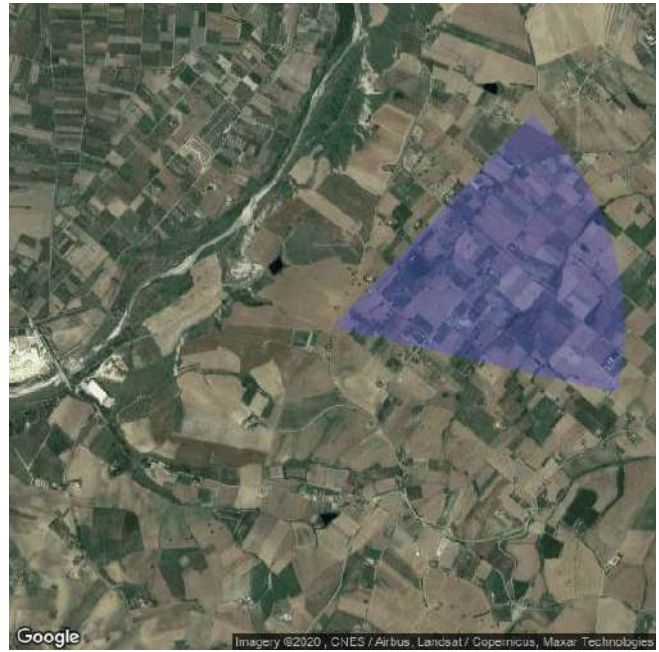
Comment:



Bearings:

Latitude	42° 1' 11" N	Compass	315.0°
Longitude	14° 47' 0" E	Pitch	-0.6°
Altitude	88m	Roll	-1.1°

Comment:



Bearings:

Latitude	42° 1' 11" N	Compass	73.1°
Longitude	14° 47' 0" E	Pitch	0.1°
Altitude	88m	Roll	-1.8°

Comment:



Bearings:

Latitude	42° 1' 9" N	Compass	276.0°
Longitude	14° 46' 60" E	Pitch	0.5°
Altitude	88m	Roll	-0.1°

Comment:



Bearings:

Latitude	42° 1' 8" N	Compass	342.7°
Longitude	14° 46' 60" E	Pitch	-0.5°
Altitude	87m	Roll	0.2°

Comment:



Bearings:

Latitude	42° 1' 8" N	Compass	39.5°
Longitude	14° 46' 60" E	Pitch	8.2°
Altitude	87m	Roll	-0.2°

Comment:



Bearings:

Latitude	42° 1' 8" N	Compass	23.3°
Longitude	14° 46' 60" E	Pitch	0.4°
Altitude	88m	Roll	0.2°

Comment:

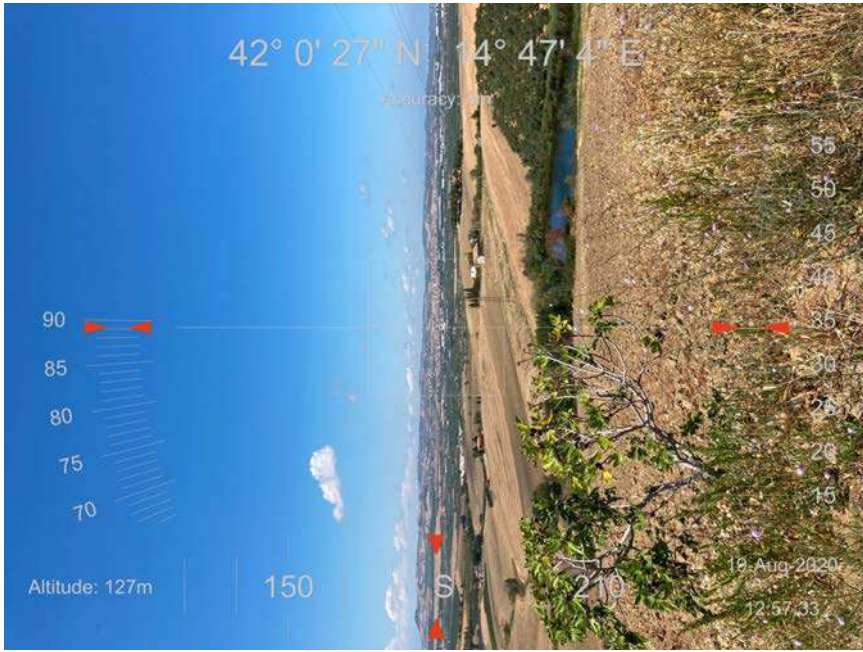


Bearings:

Latitude	42° 0' 27" N	Compass	332.3°
Longitude	14° 47' 4" E	Pitch	81.0°
Altitude	127m	Roll	75.6°

Comment:

Line going towards the ENEL primary cabin



Bearings:

Latitude	42° 0' 27" N	Compass	178.5°
Longitude	14° 47' 4" E	Pitch	34.2°
Altitude	127m	Roll	89.2°

Comment: