





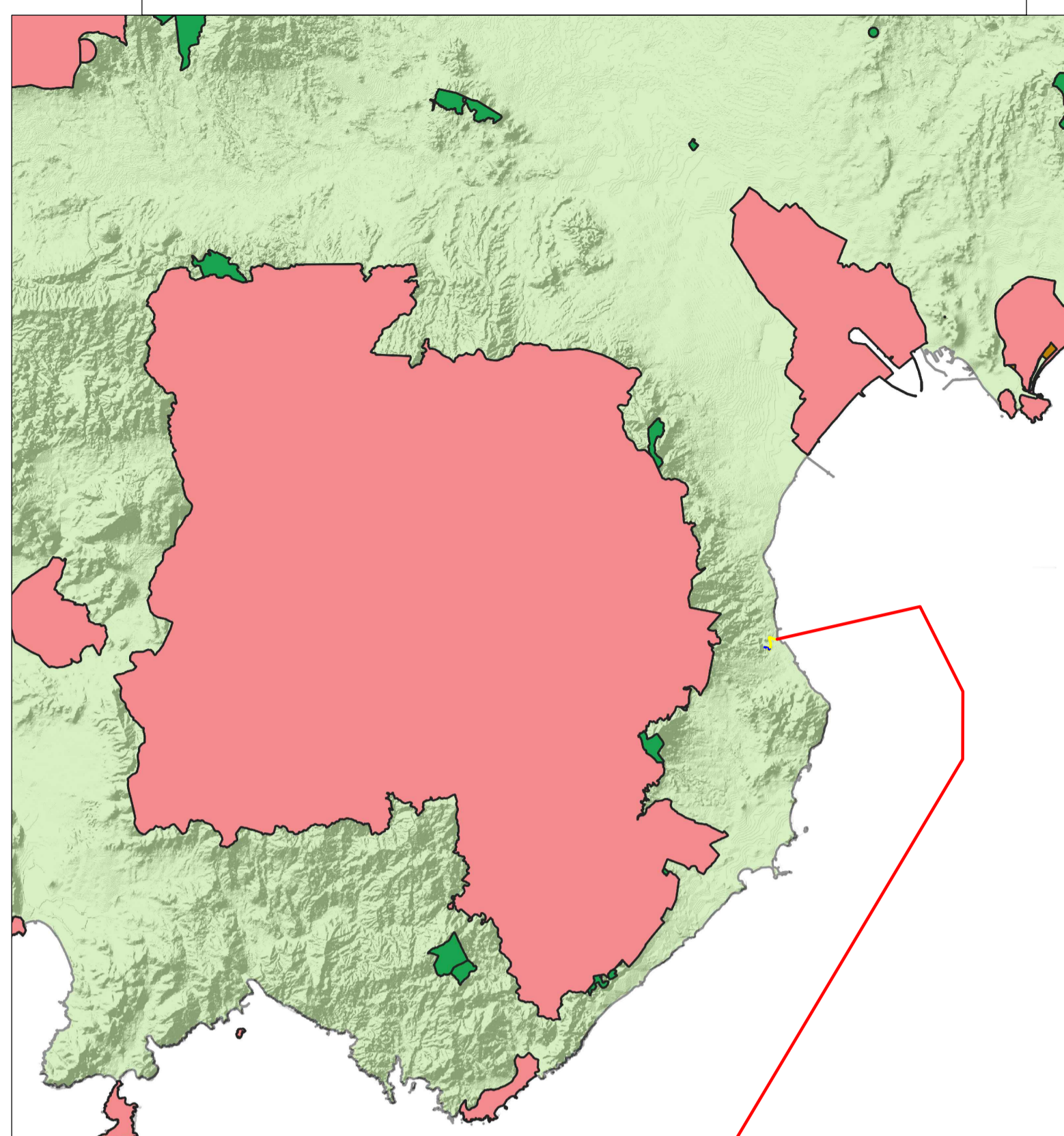


LEGENDA

-  cavidotto marittimo 380kV
-  cavidotto terrestre 380kV
-  sottostazione d'utenza
-  sistema Regionale Parchi
-  parchi Aree Protette Naz. L. n. 394/91
-  aree Gest. Speciale Ente Foreste


Scala planimetrica
1:25.000

SISTEMA GEODETICO DI RIFERIMENTO
WGS84 / UTM ZONA 32 NORD
EPSG CODE: 32632



Scala planimetrica
1:250.000


PROPONENTE
Repower Renewable Spa
Via Lavaredo, 44
30174 Mestre (VE)



L'energia che ti serve.

PROGETTAZIONE

Progettista:
Ing. Paolo Pierangeli



Via Enea, 20C
61032 Fano (PU) ITALY
Phone +39 0721 855856 - +39 0721 855370 - fax +39 0721 855733
www.tecnoconsult.it - tecnoconsult@tecnoconsult.it

N° COMMESSA
1469

PARCO EOLICO "REPOWER FOWT SARDEGNA SUD"
PROVINCIA DI CAGLIARI
COMUNE DI SARROCH

PROGETTO PRELIMINARE

ELABORATO
BENI PAESAGGISTICI: PARCHI E RISERVE ART. 142 DEL CODICE

CODICE ELABORATO
Tav.19

NOME FILE
Parchi e riserve Sardegna

REV.	DATA	DESCRIZIONE REVISIONE	REDAZIONE	VERIFICA	APPROVAZIONE
00	05/11/2021	PRIMA EMISSIONE	TECNOCONSULT	TECNOCONSULT	REPOWER

Copyright - Rev. 00