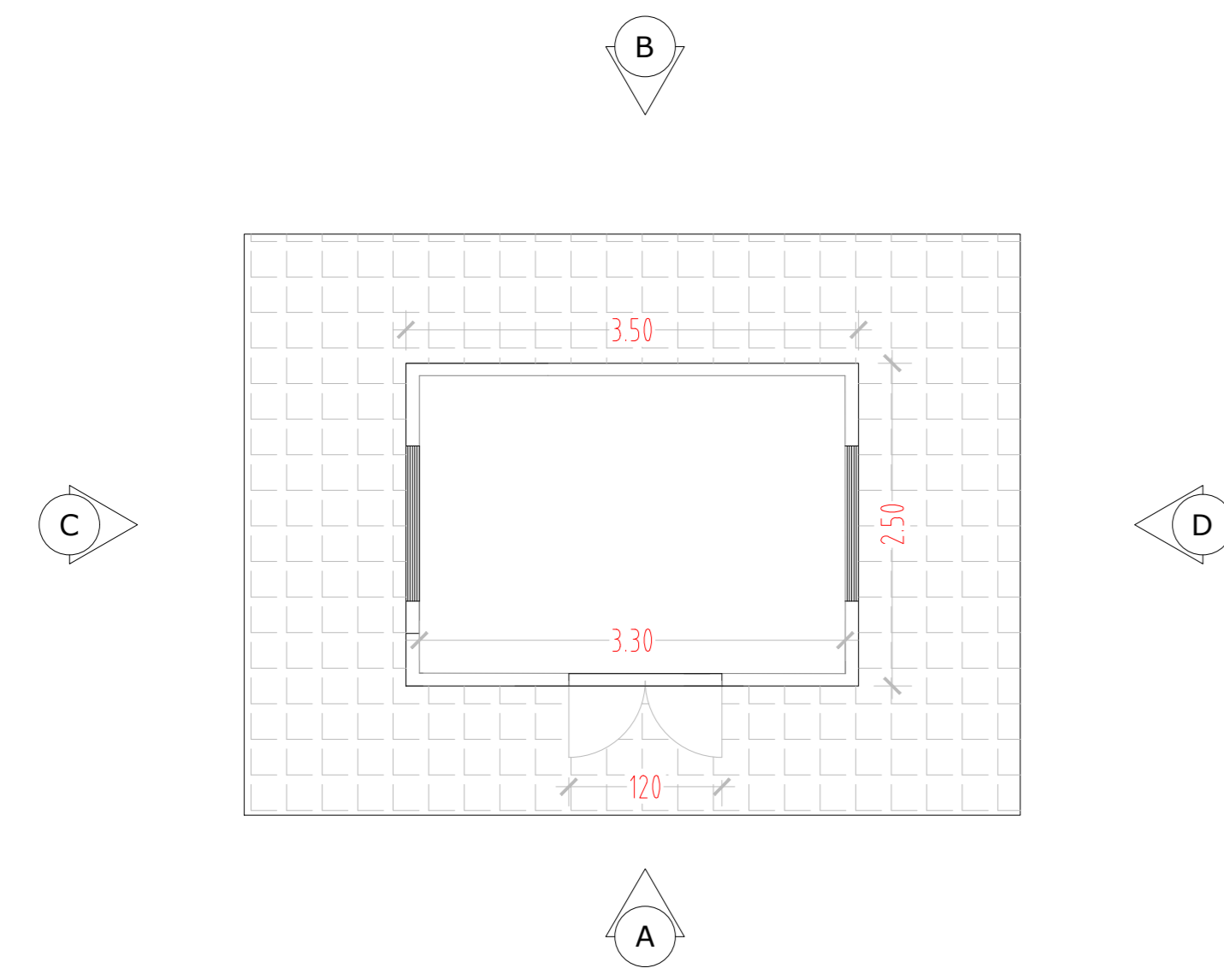
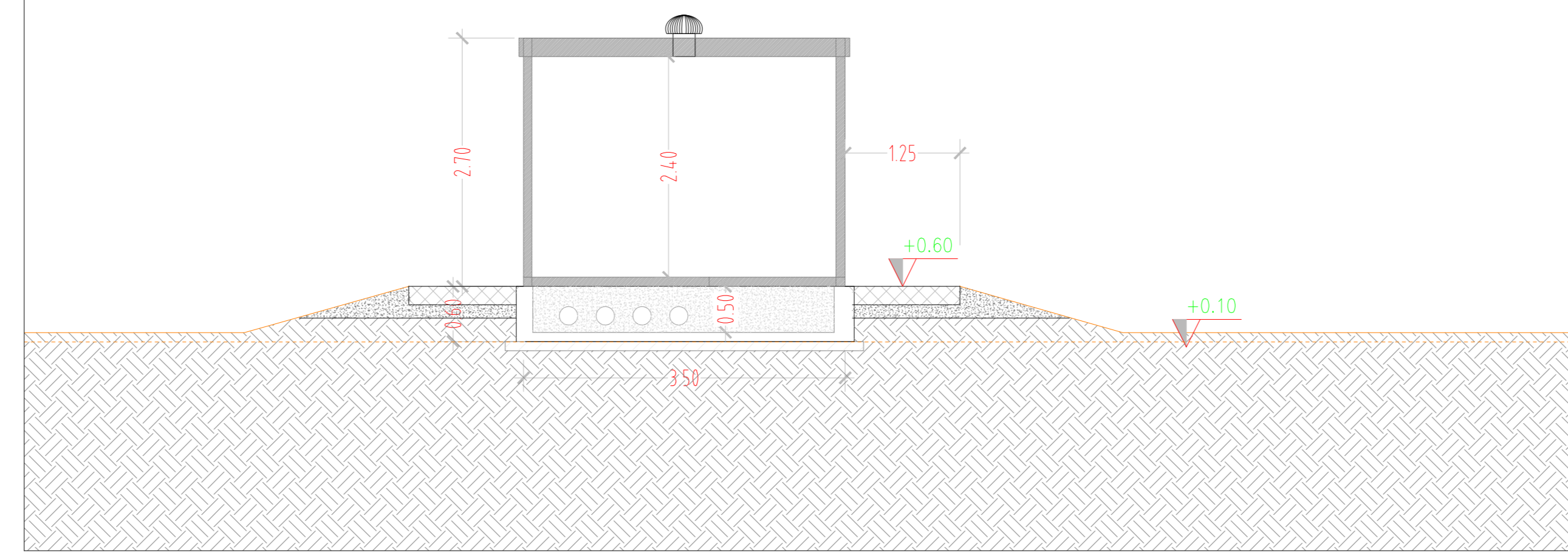


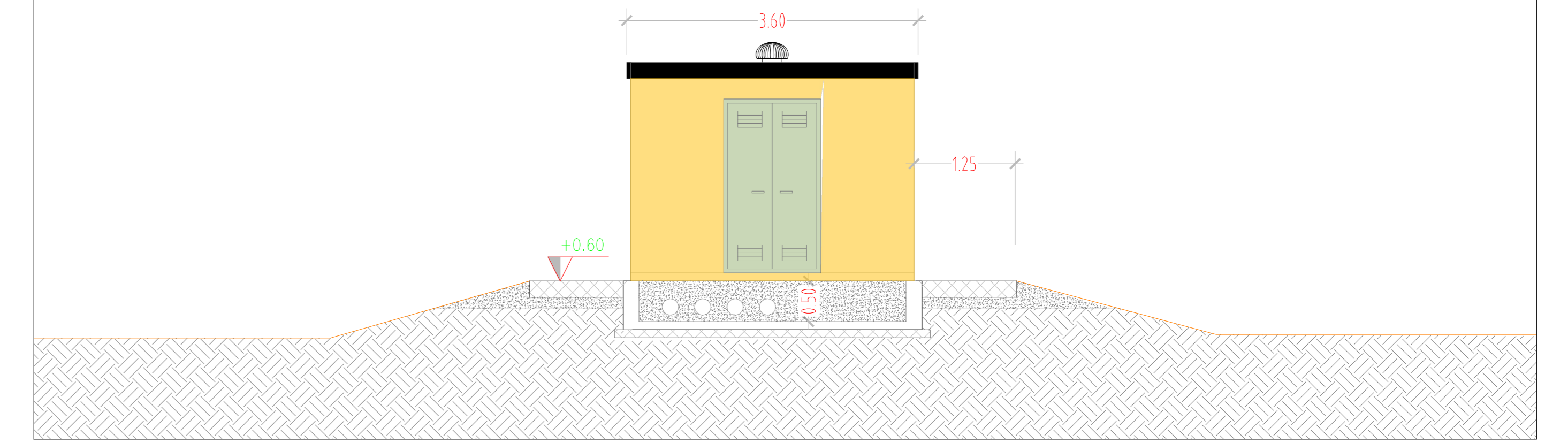
PLANIMETRIA - SCALA 1:50



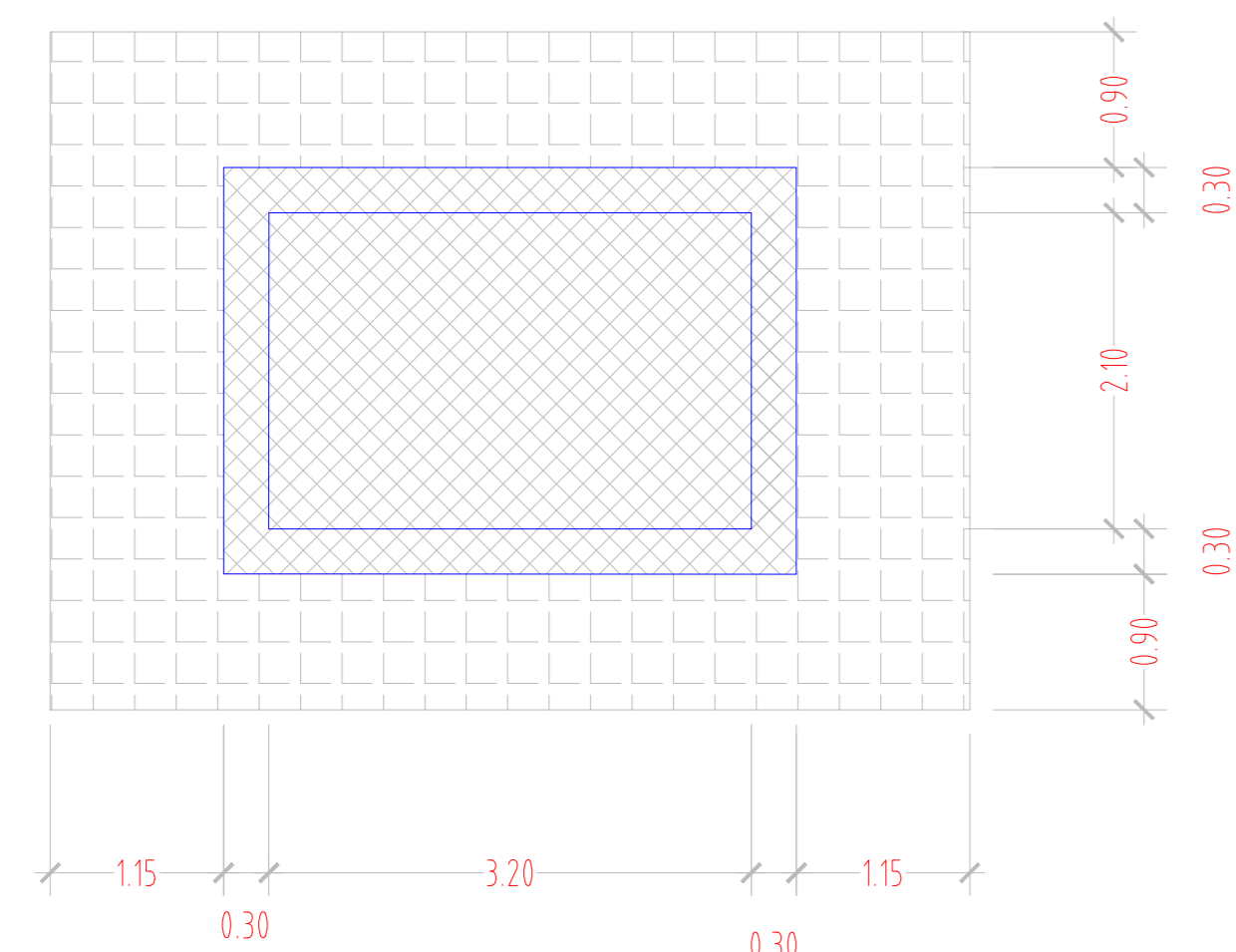
SEZIONE - SCALA 1:50



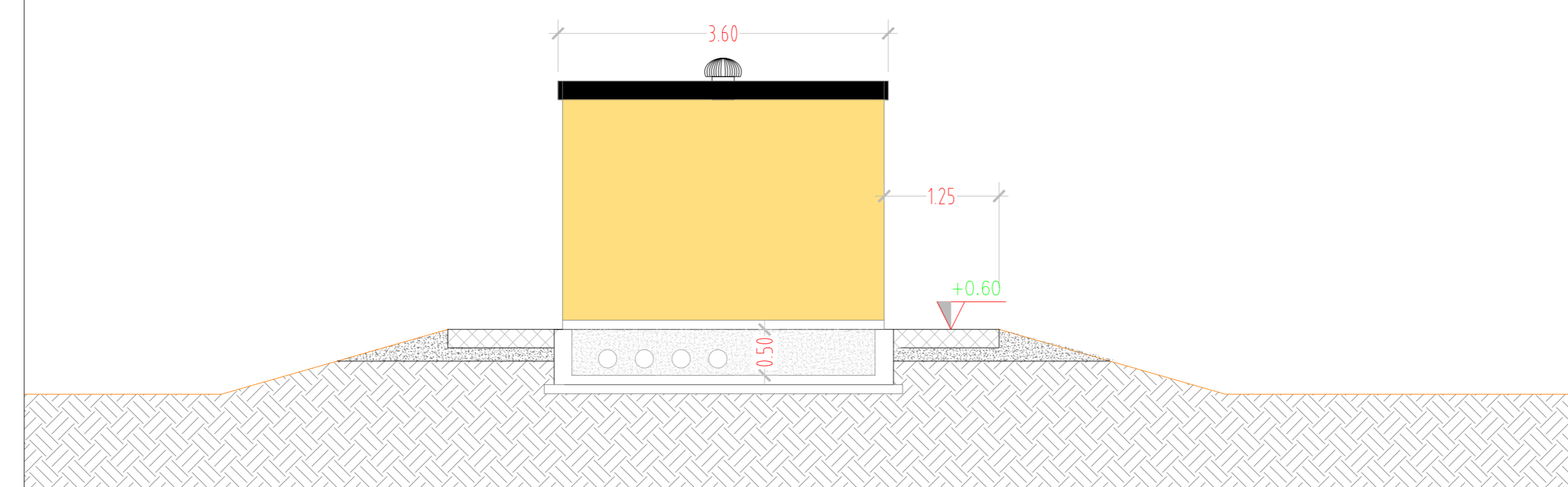
VISTA A - SCALA 1:50



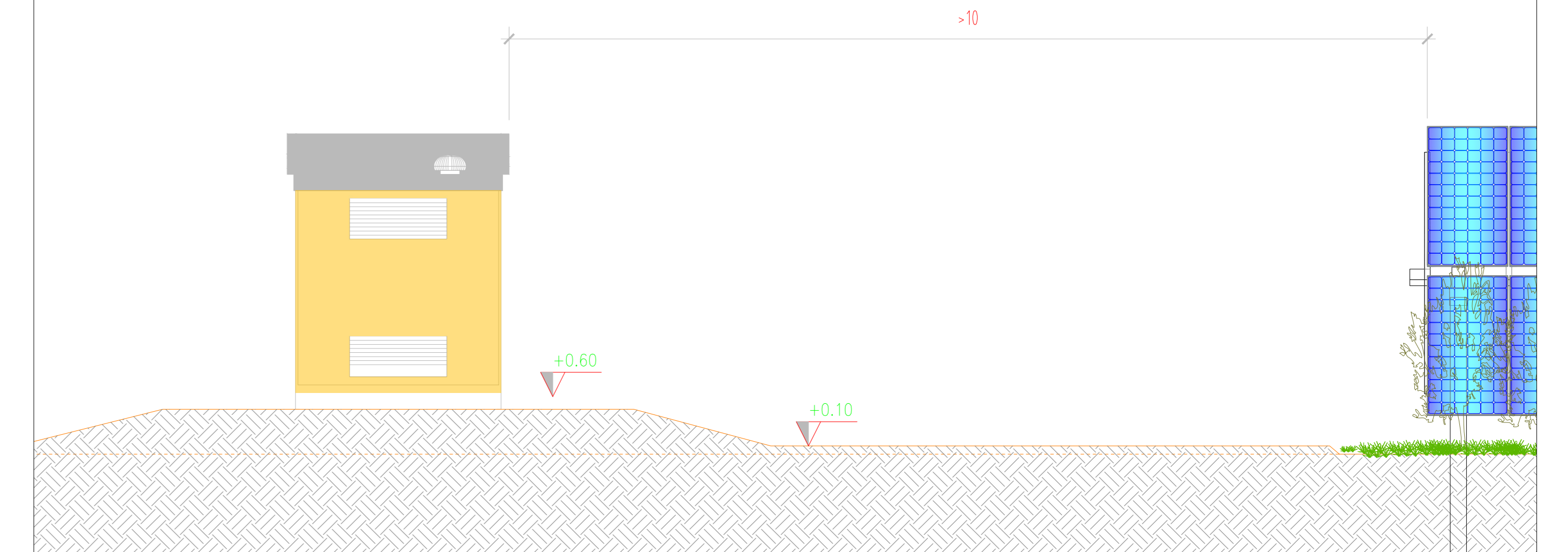
PIANTA FONDAZIONI - SCALA 1:50



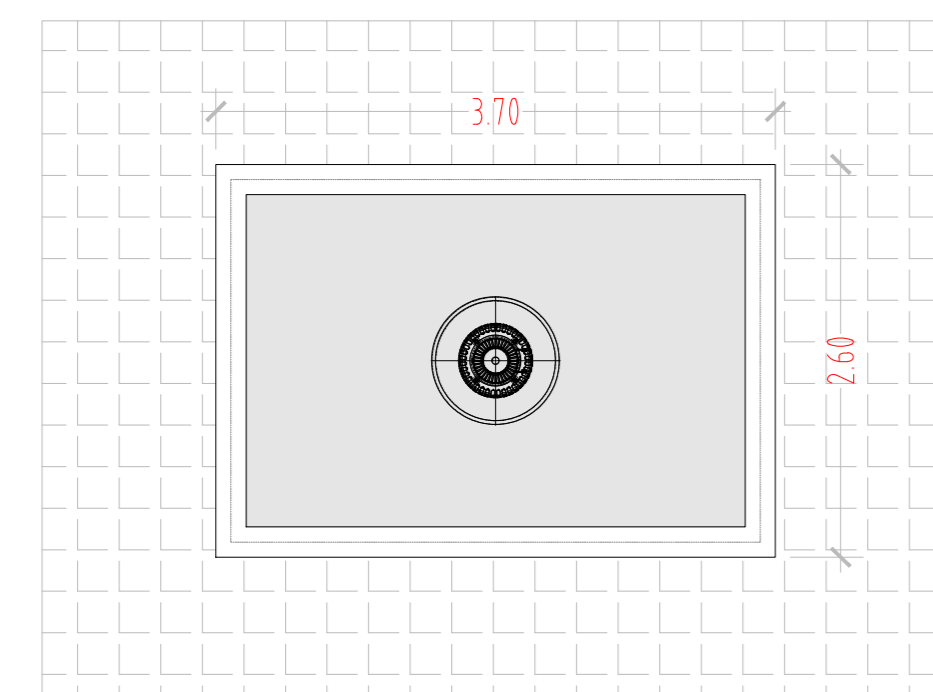
VISTA B - SCALA 1:50



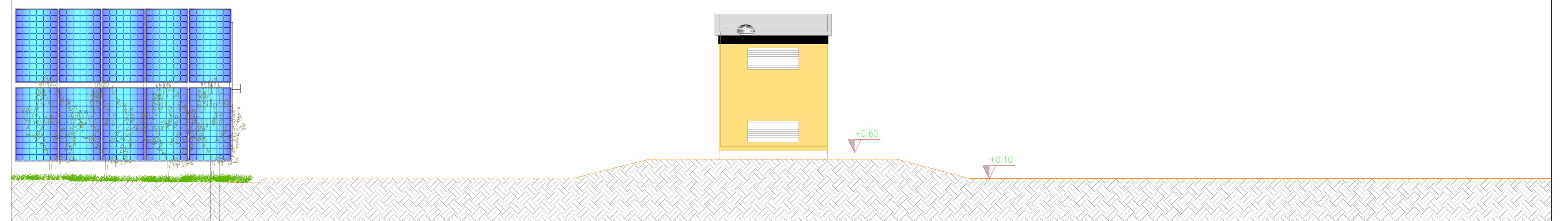
VISTA C - SCALA 1:50



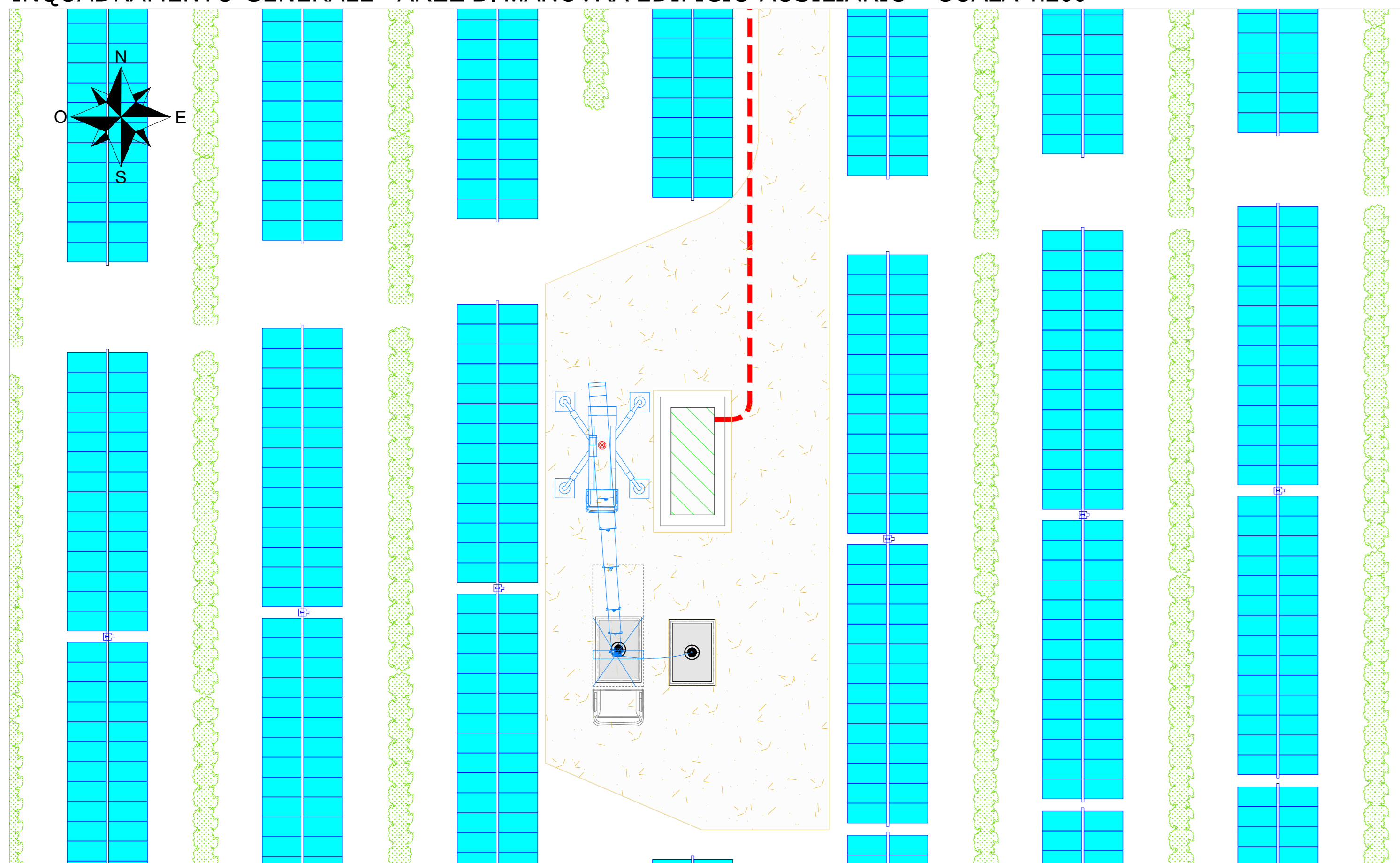
VISTA DALL'ALTO - SCALA 1:50



VISTA D - SCALA 1:50



INQUADRAMENTO GENERALE - AREE DI MANOVRA EDIFICIO AUSILIARIO - SCALA 1:200



COMMITTENTE <b>Wood Solare Italia S.r.l.</b> <b>wood.</b>		STUDIO DI PROGETTAZIONE Ing Daniele Cavallo Via C. dei Croix, 55 - 72022 - Latiano (BR)			
0	LUG-20	EMESSO PER ITER AUTORIZZATIVO	DC	FF	AM
REV.	DATE	DESCRIPTION	BY	CHK	APP.
REVISIONS					
Impianto agro-fotovoltaico da 55202 kWp (40000 kW in immissione) - Comune di Latiano (BR)			APPROVED FOR CONSTRUCTION DWG. REV. DATE SIGNATURE		
PROGETTO DEFINITIVO IMPIANTO AGRO-FOTVOLTAICO			ORDER N° SUPPLIER CONTRACT N° QBN1004A		
TAV. 12B Tipico cabina ausiliaria			SUBPROJECT CODE THIS DWG. SUPERSEDED BY SCALE 1:200 1:50		
OBJECT:			THIS DRAWING IS THE PROPERTY OF WOOD SOLARE ITALIA S.R.L. AND IS LOANED WITHOUT COMPENSATION OTHER THAN THE BONUS/INCENTIVE + SUBSIDY THAT IT SHALL NOT BE REPRODUCED COPIED OR DISPOSED OF DIRECTLY OR INDIRECTLY FOR ANY PURPOSE OTHER THAN THAT FOR WHICH IT IS SPECIFICALLY FORWARDED THE APPARATUS SHOWN IN THE DRAWING IS COVERED BY PATENTS.		
CAD FILE NAME:			SHEET OF A0		