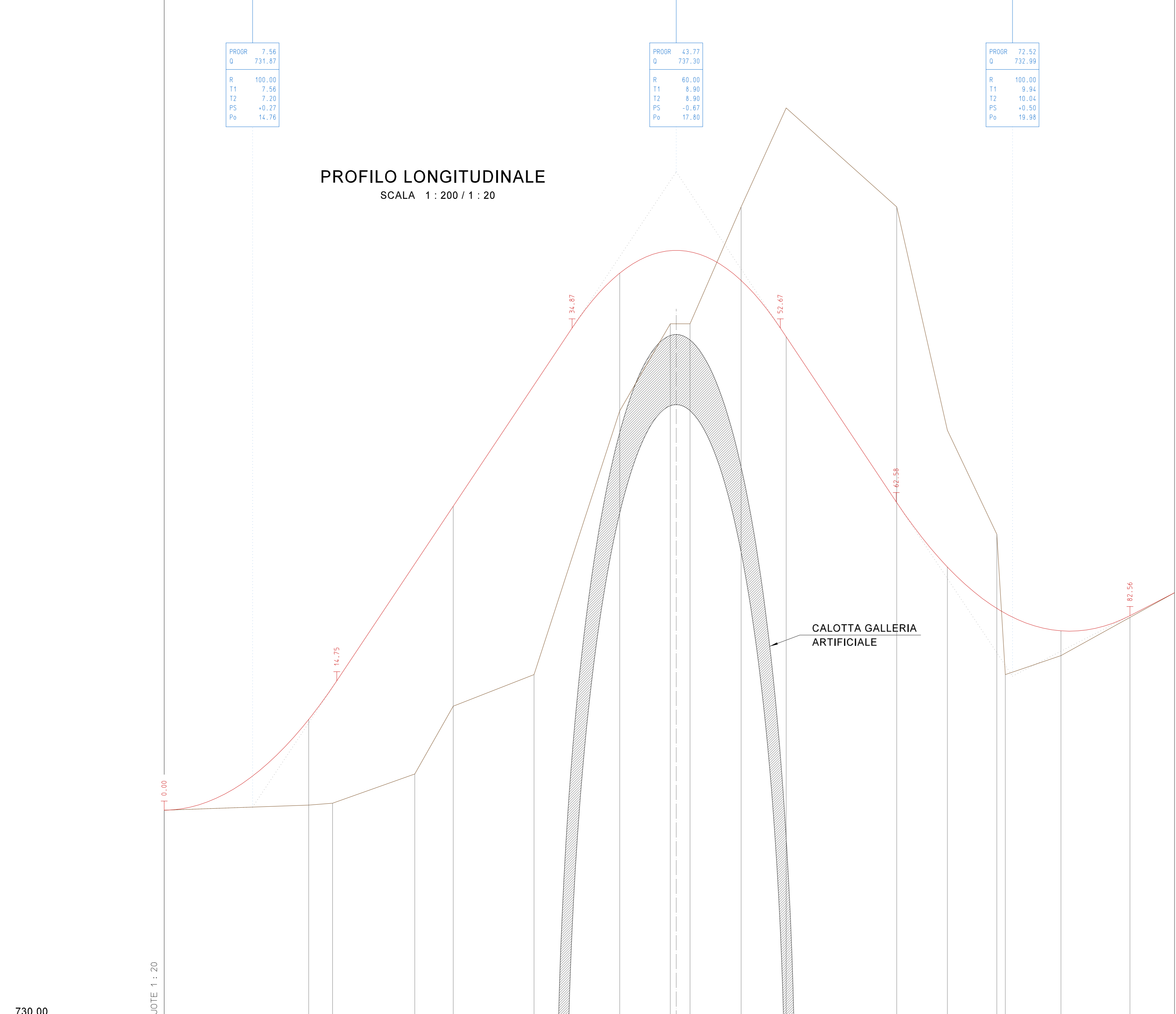


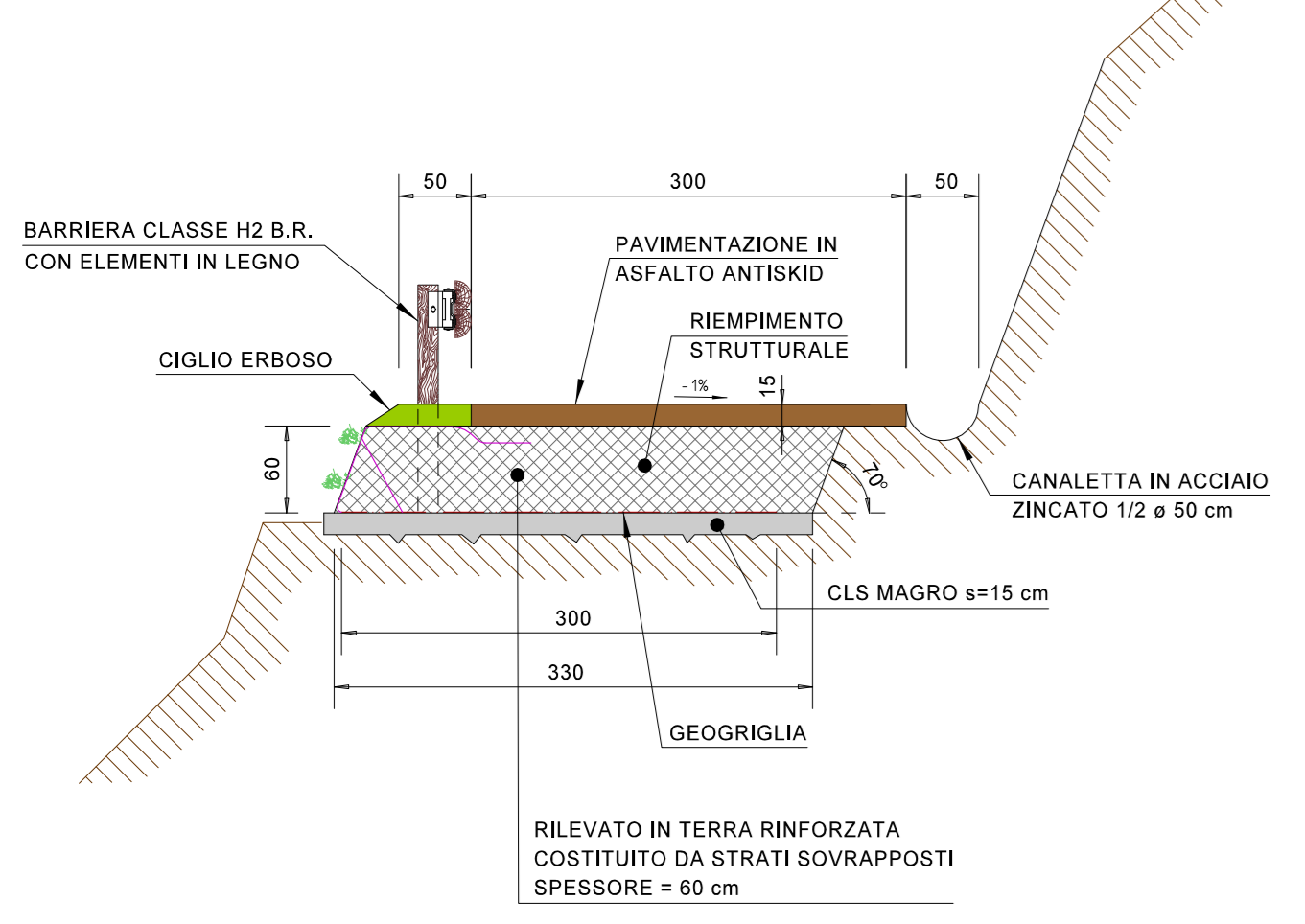
LIVELLETTE
 D = +0.03 m L = 7.56 m P = +0.35%
 D = +5.43 m L = 36.21 m P = +5.00%
 D = -4.31 m L = 28.75 m P = +5.00%
 D = +0.71 m L = 13.56 m P = +5.15%

PROFILO LONGITUDINALE
 SCALA 1:200 / 1:20

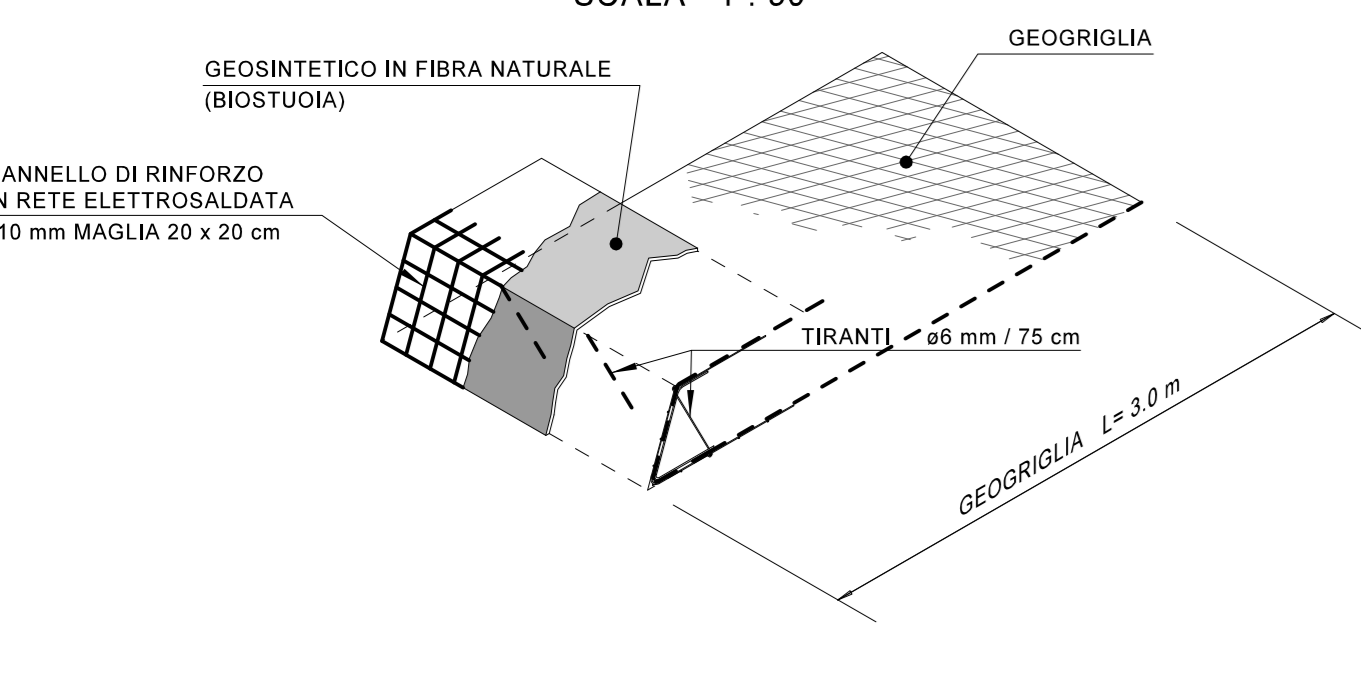


SEZIONI	1	2	3	4	5	6	7	8
DISTANZE PARZIALI		125	204	753	329	691	325	107
DISTANZE PROGRESSIVE		125	329	533	862	1553	1878	2985
QUOTE TERRENO	271.00	270.00	270.00	270.00	270.00	270.00	270.00	270.00
QUOTE PROGETTO	271.00	270.00	270.00	270.00	270.00	270.00	270.00	270.00
ANDAMENTO PLANIMETRICO	CC L=24.71 m R=78.25 m		RT L=28.60 m		CC L=13.78 m R=23.60 m		CC L=15.42 m R=47.30 m	

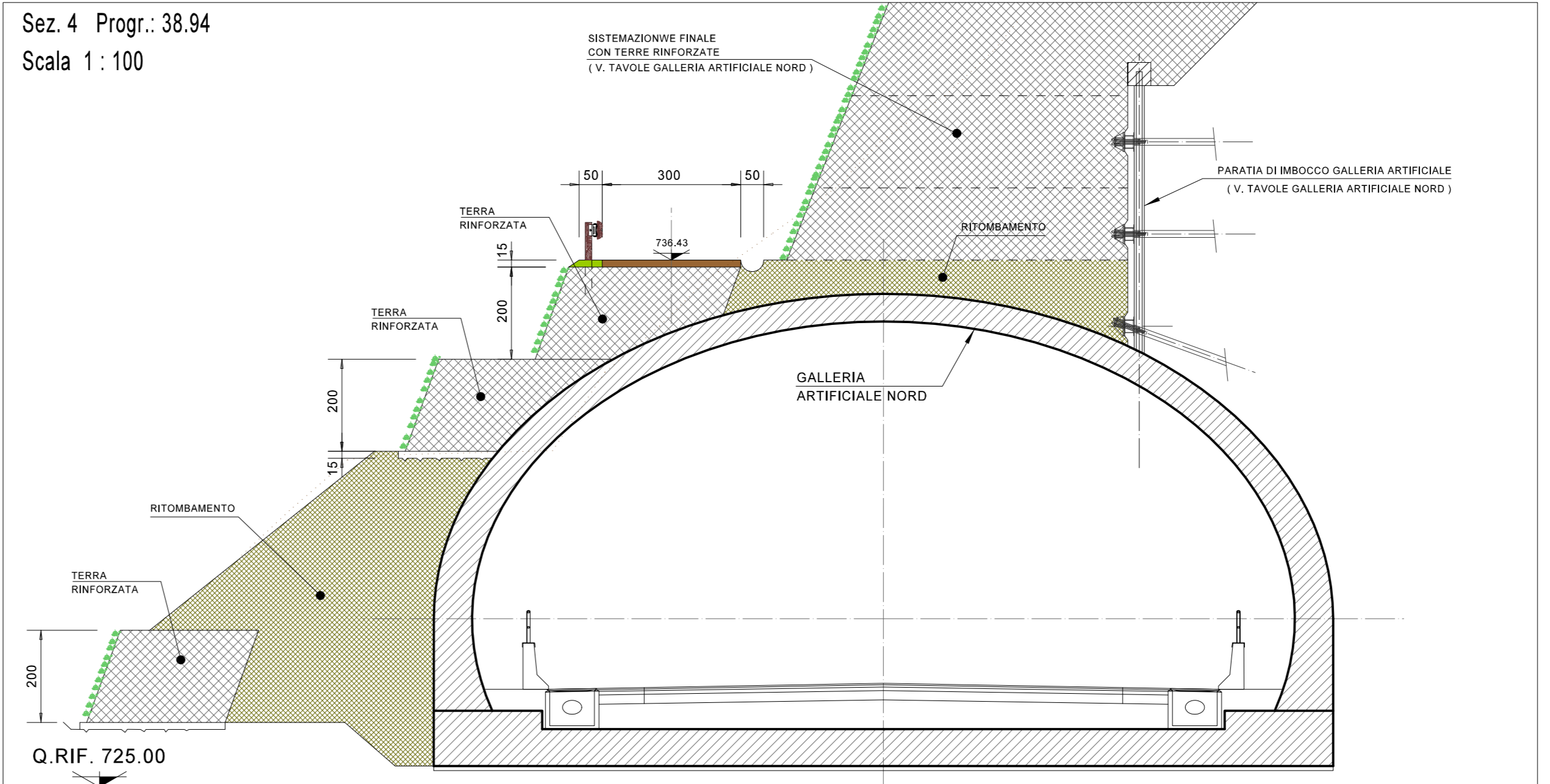
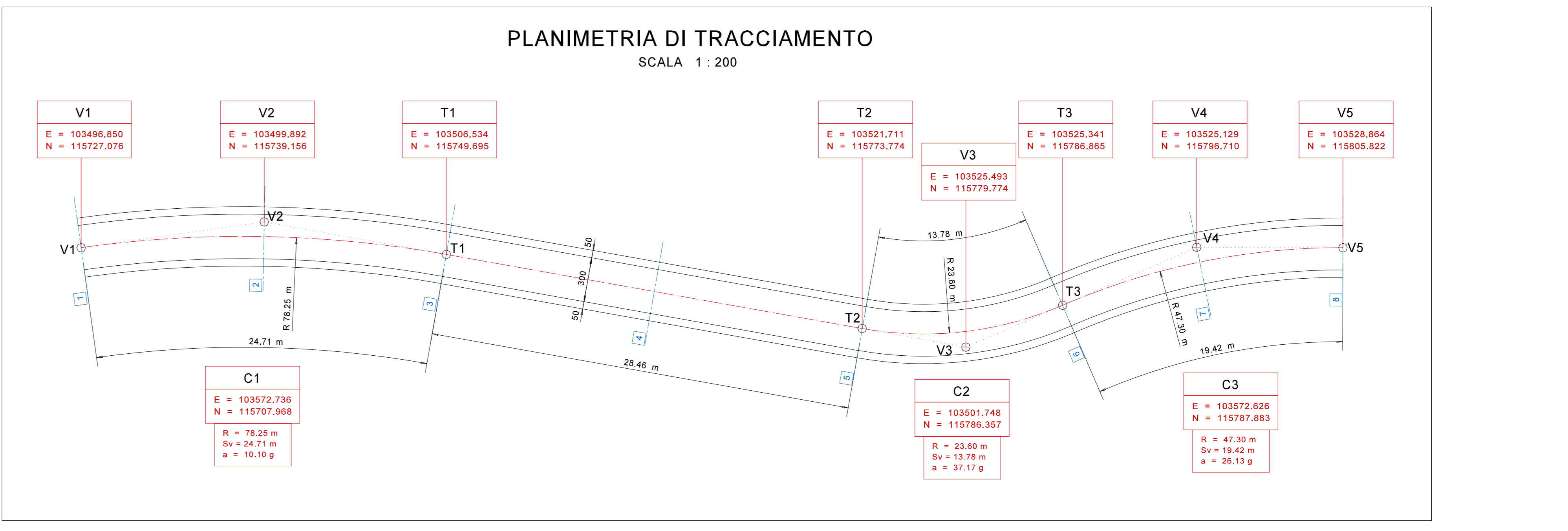
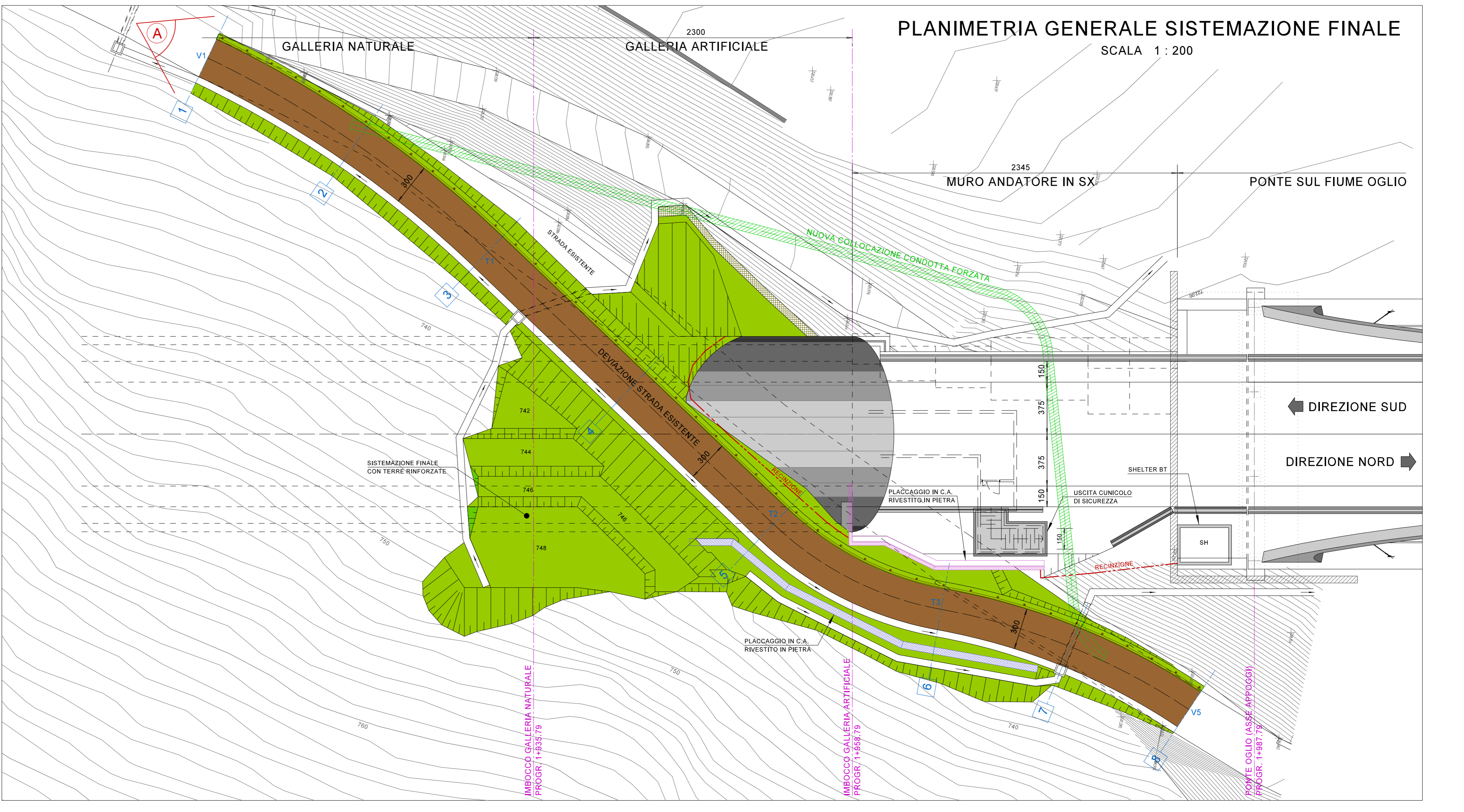
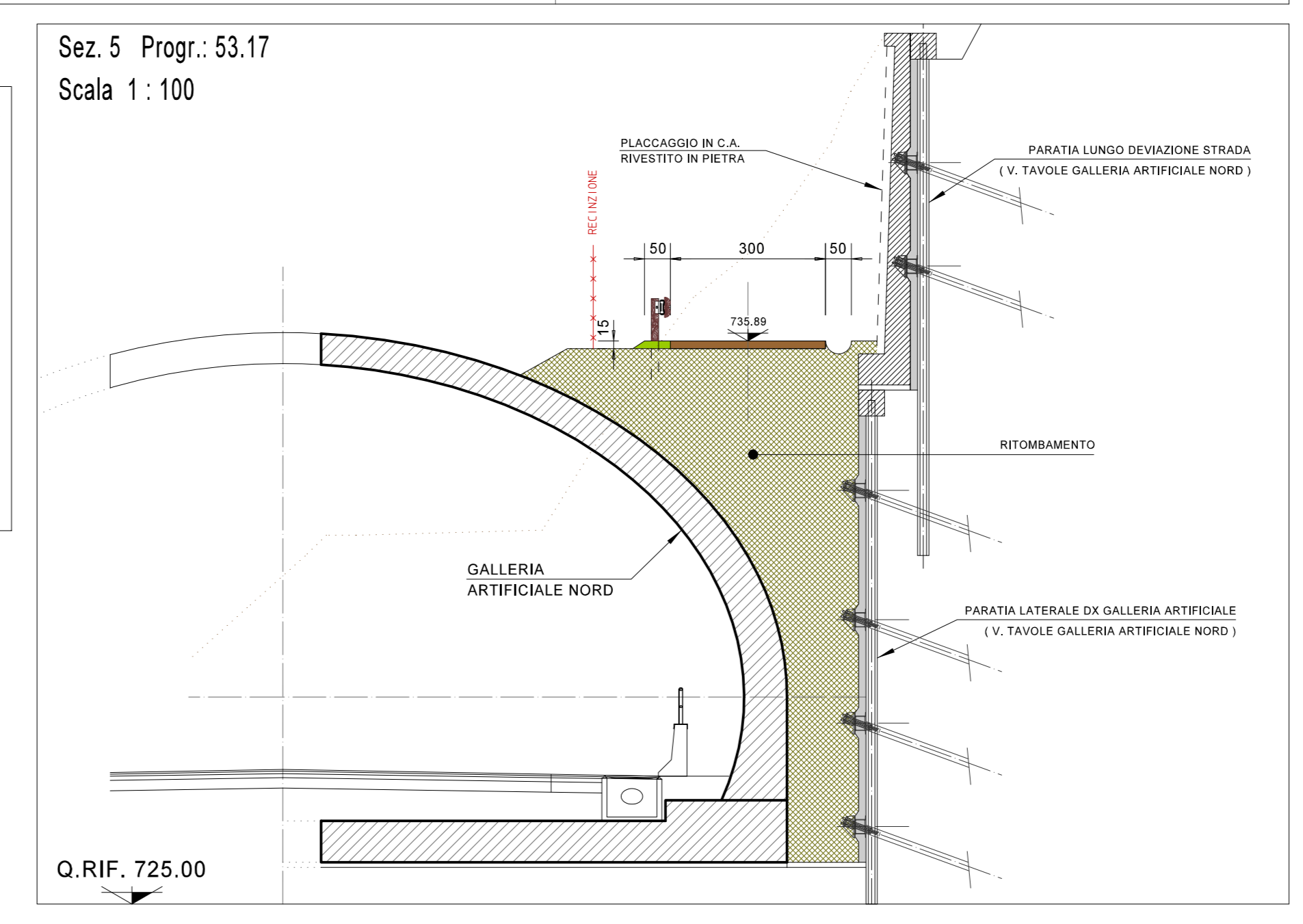
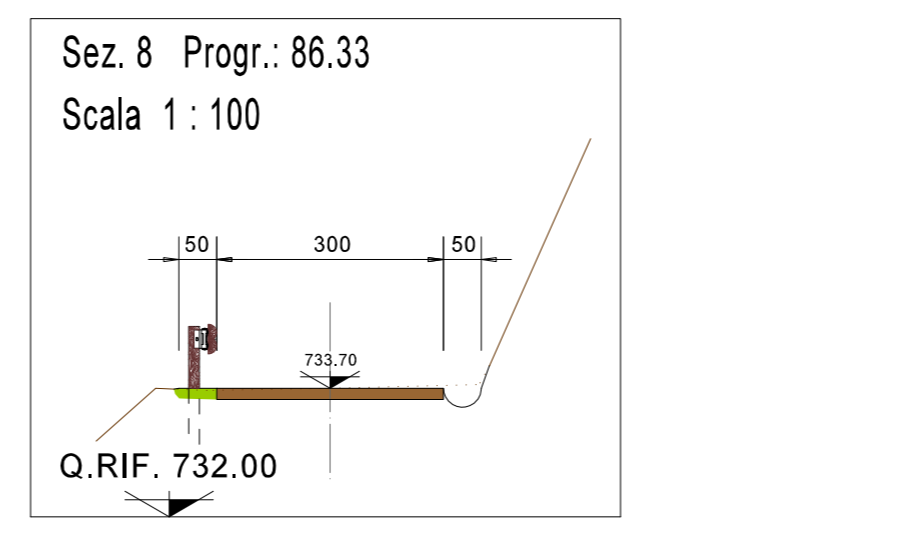
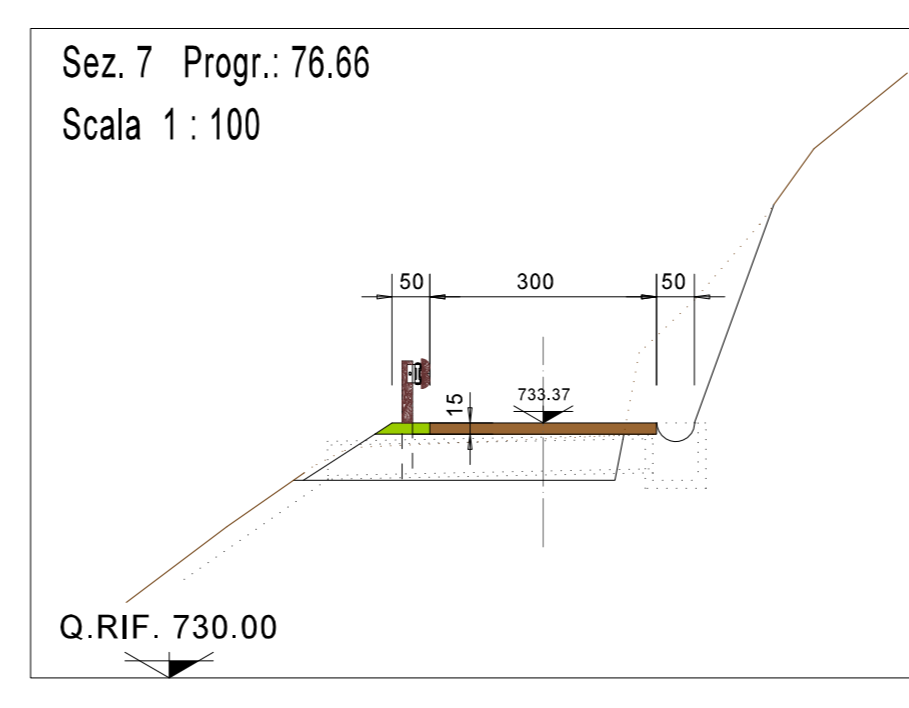
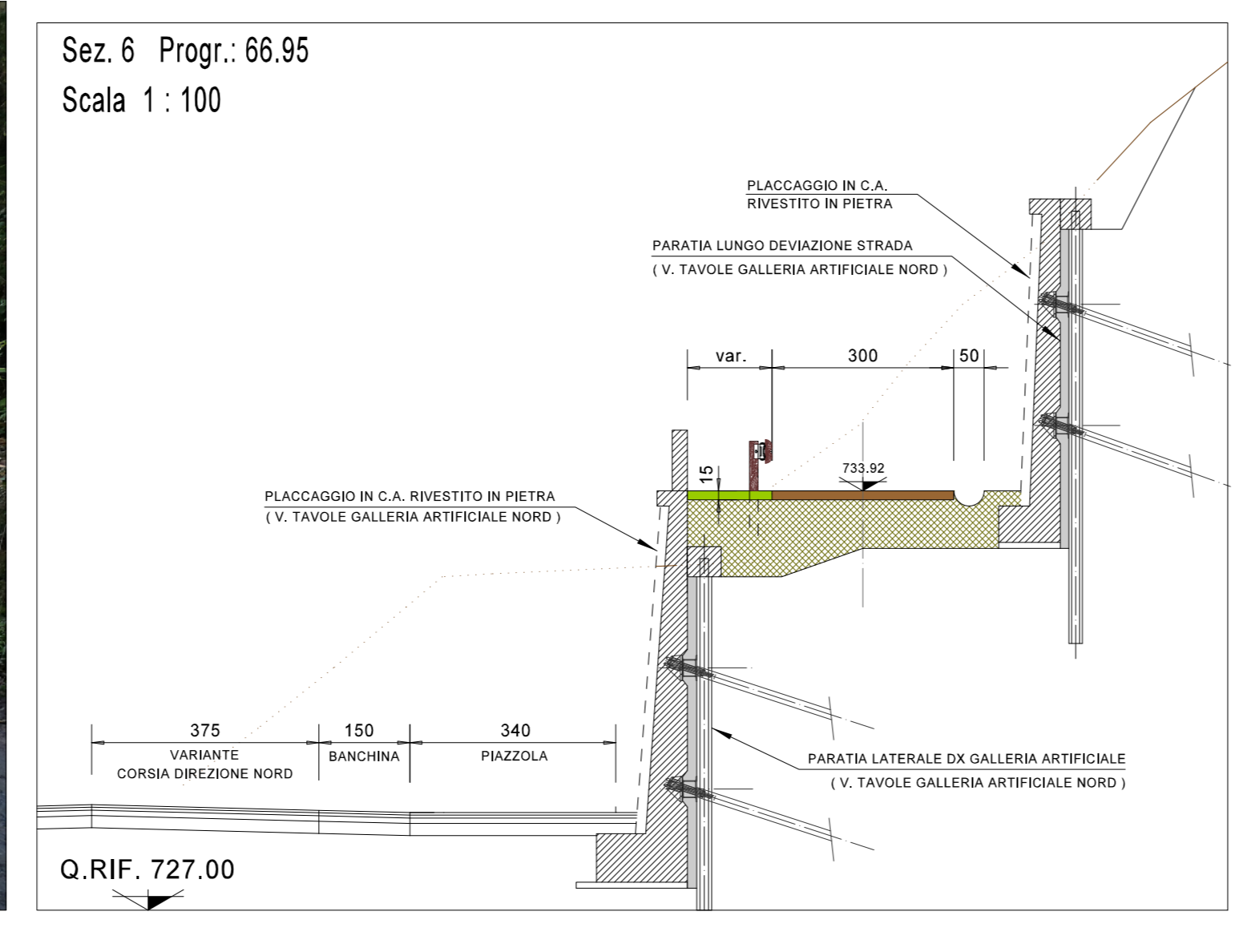
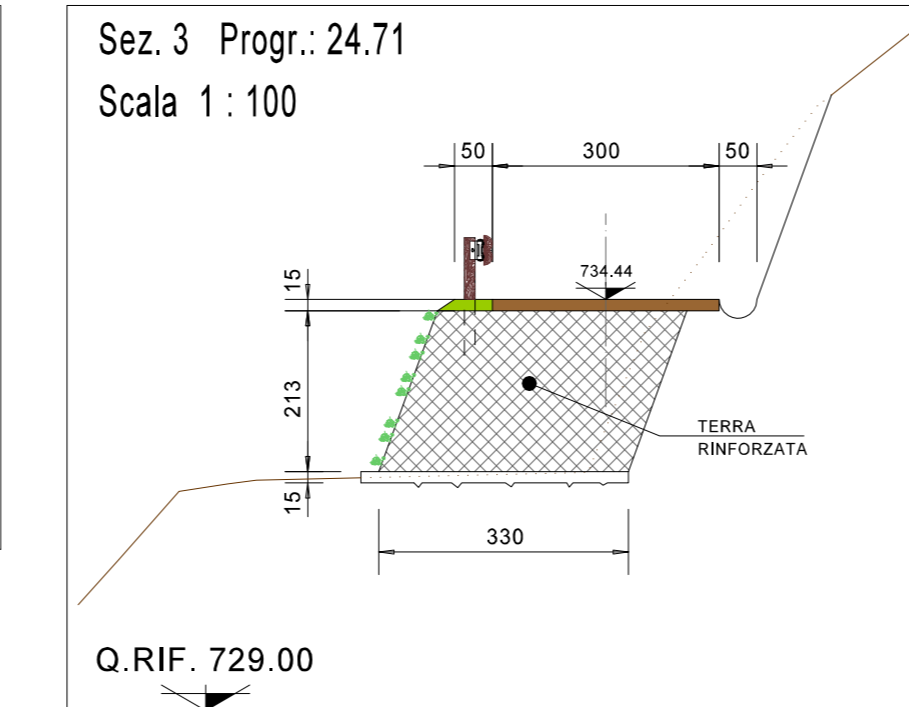
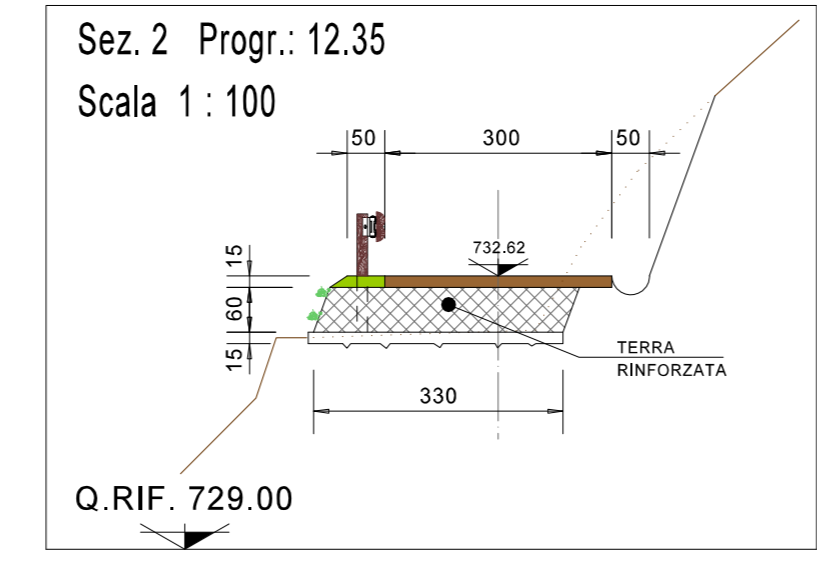
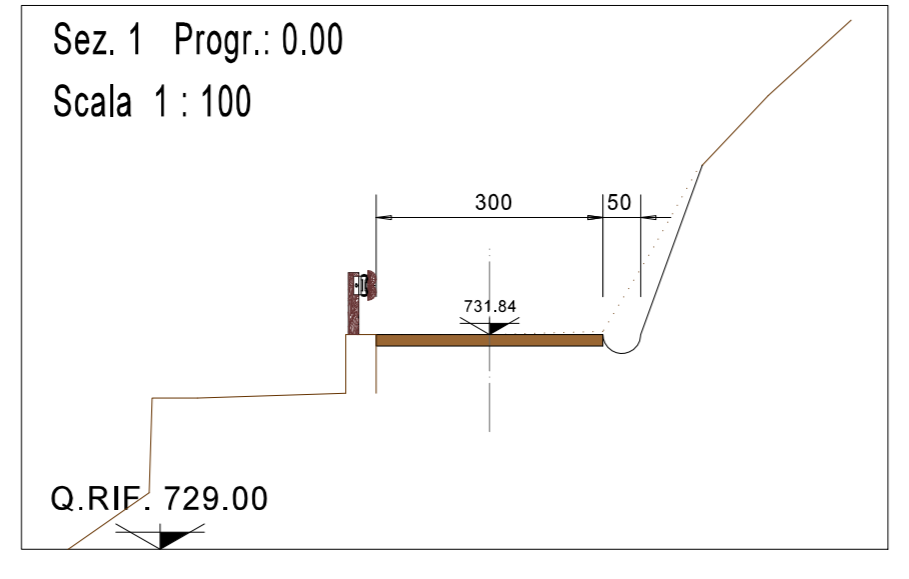
SEZIONE TIPO DI INTERVENTO
 SCALA 1:50



PARTICOLARE ELEMENTO TIPO
 SCALA 1:50



SEZIONE 1 - STATO ATTUALE - RIPRESA FOTOGRAFICA "A"



ANAS S.p.A.
 Direzione Progettazione e Realizzazione Lavori

S.S. 42 "DEL TONALE E DELLA MENDOLA" VARIANTE EST DI EDOLO

PROGETTO DEFINITIVO

TECHINT Engineering & Construction
CESI CONSULTING ENGINEERING & RESEARCH
ALSMES ALTERNATIVE SOLUTIONS MANAGEMENT ENGINEERING & RESEARCH
CECOE CONSULTING ENGINEERING & RESEARCH

IL RESPONSABILE DEL PROCEDIMENTO: Ing. Giancarlo LIGORIO
 IL RESPONSABILE DELL'INTEGRAZIONE DELLE PRESTAZIONI SPECIALISTICHE: Ing. Alessandro RODINO
 IL GEOLOGO: Cof. GIAC. ZAPPALÀ
 IL COORDINATORE DELLA SICUREZZA IN FASE DI PROGETTAZIONE: Ing. Alessandra TRIBIOLI
 IL PROGETTISTA SPECIALISTA: Ing. Alessandro RODINO

PROGETTO STRADALE
 DEVIAZIONE STRADA ESISTENTE SU IMBOCCO NORD

CODICE PROGETTO	NOME FILE	REVISIONE	SCALA
COMI21	POP90TRADIM0_C		
D 18/10			
CODICE ELAB.	P00PS00TRADI01	C	VARIE

C	EMMISSIONE PER APPROVAZIONE	Maggio 2022	M. Barale	E. Giraudo	A. Rodino
B	EMMISSIONE CAS	Aprile 2022	M. Barale	E. Giraudo	A. Rodino
A	EMMISSIONE VIA	Novembre 2021	M. Barale	E. Giraudo	A. Rodino
REV.	DESCRIZIONE	DATA	REDATTO	VERIFICATO	APPROVATO