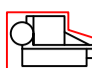












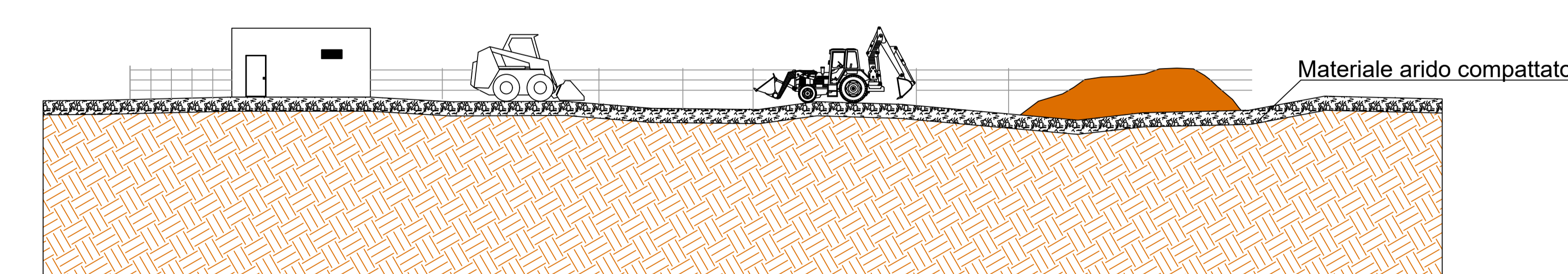
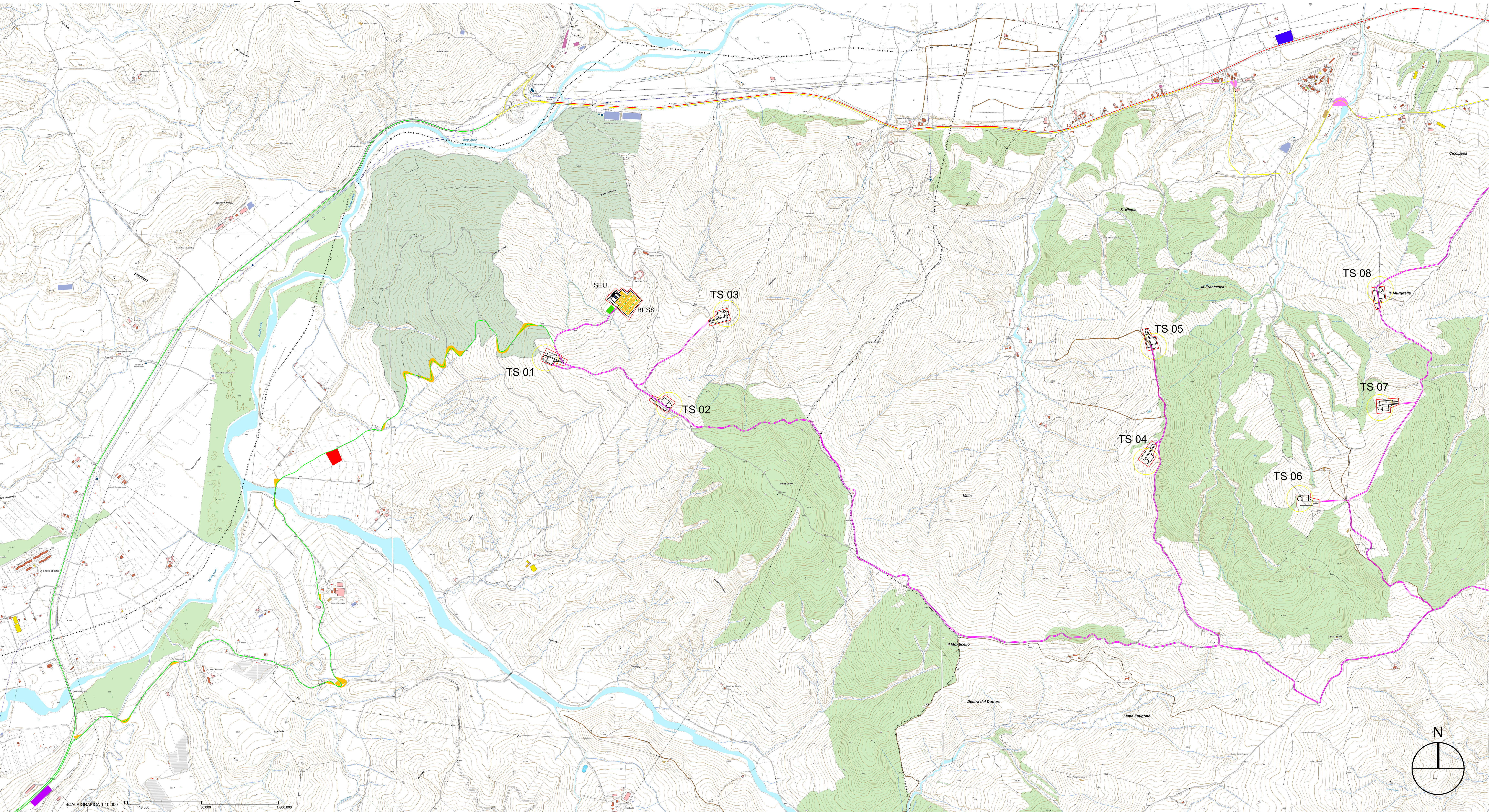
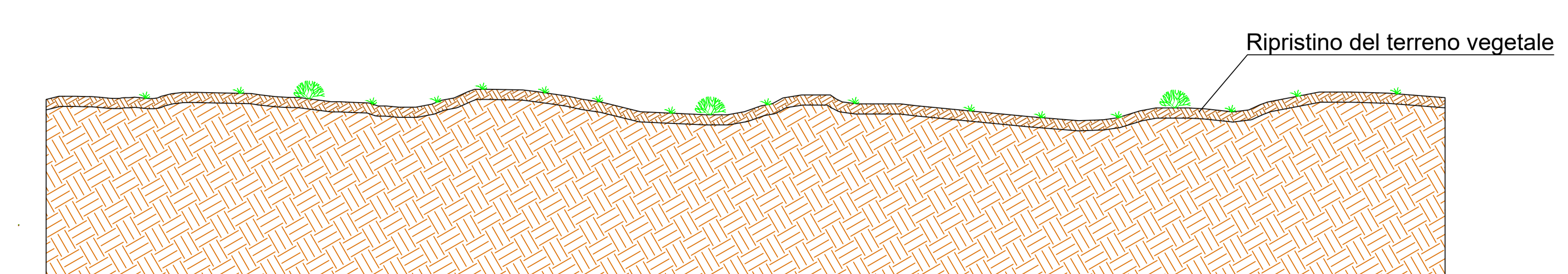


-  TS n°
-  Piazze di montaggio
-  Itinerario 1
-  Itinerario 2
-  S.S. n.598
-  Strade previste da progetto
-  Rotore WTG - D = 170 m
-  Adeguamenti stradali 1
-  Adeguamenti stradali 2
-  Area di trasporto 1
-  Area di trasporto 2
-  Area cantiere 1
-  Area cantiere 2

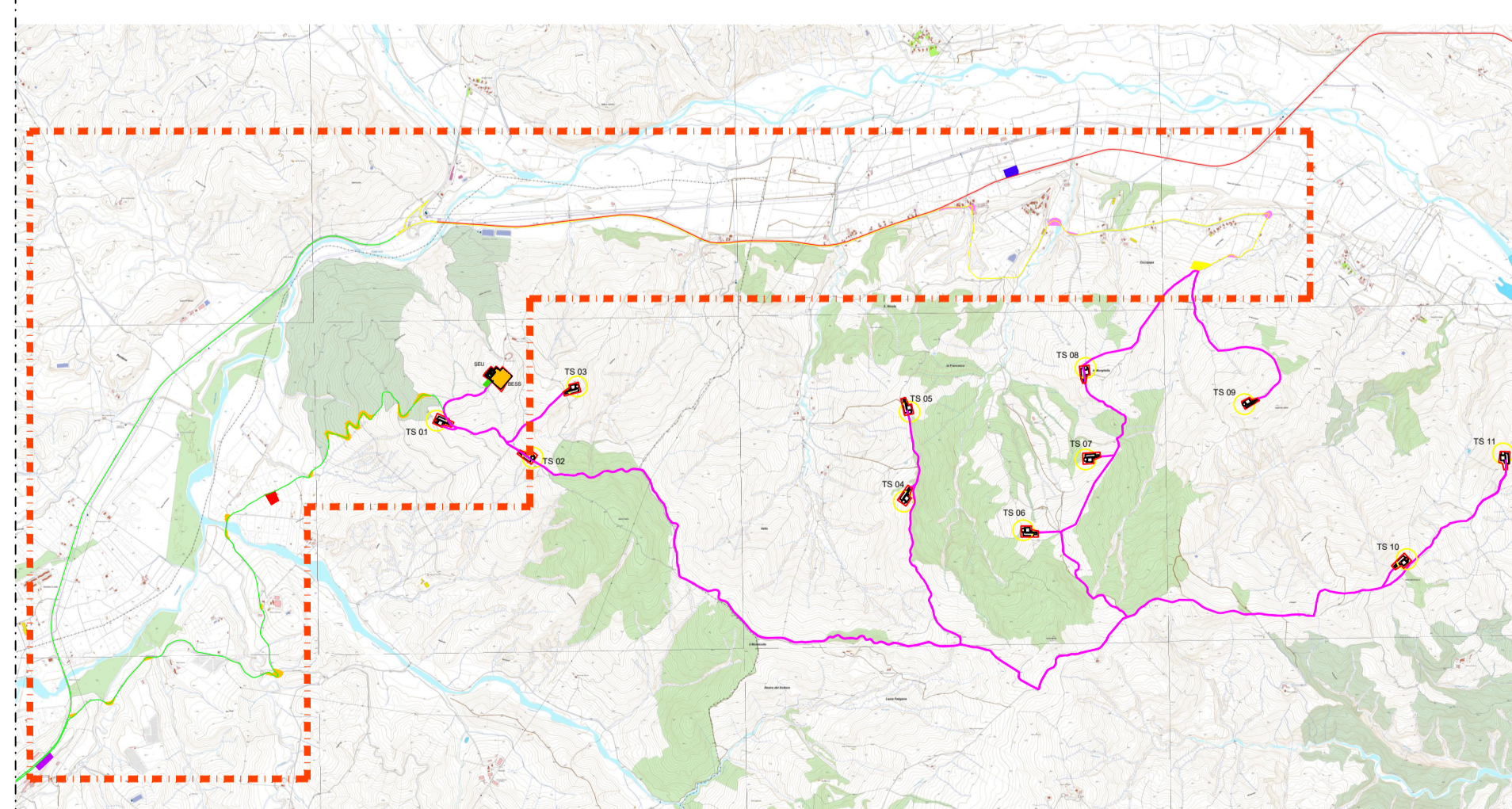
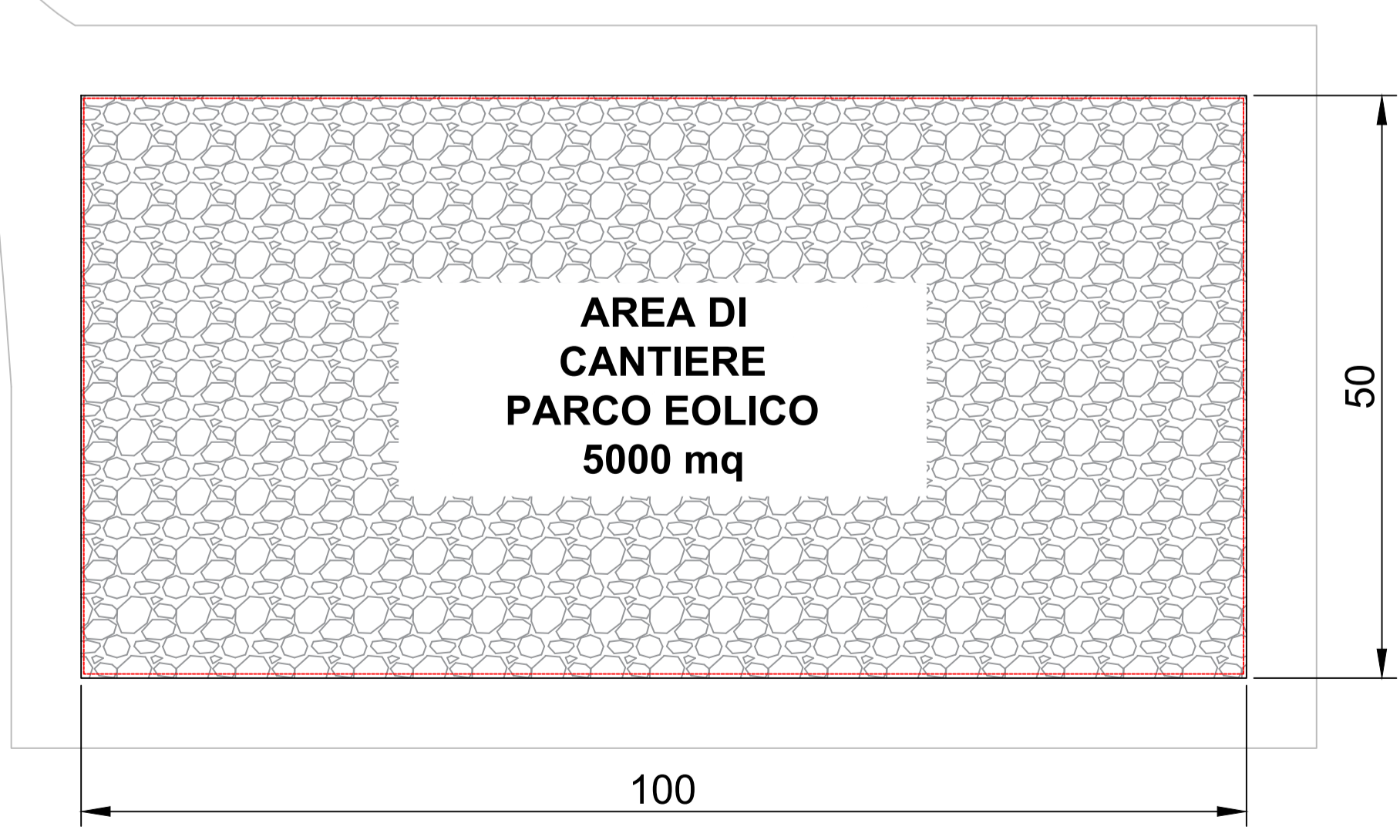


Area di stoccaggio e cantiere in fase di costruzione dell'impianto



Area di stoccaggio e cantiere dopo il ripristino vegetazionale

Al termine dei lavori di costruzione dell' impianto eolico le aree di cantiere saranno oggetto di interventi di ripristino vegetazionale, al fine di riportare tali aree alle condizione "Ante Operam".



AUTORIZZAZIONE UNICA EX D. LGS. N. 387/2003



PROGETTO DEFINITIVO  
PARCO EOLICO TURSI SANT'ARCANGELO

Titolo elaborato:  
TIPICO AREE DI CANTIERE

CG	PD	GD	Prima Emissione	11/04/2022,00
REDAITTO	CONTR.	APPROV.	DESCRIZIONE REVISIONE DOCUMENTO	DATA
				REV

PROPONENTE



ENERGY PRIME S.R.L.  
Via G. Garibaldi N.15  
74023 Grottaglie (TA)

CONSULENZA



GE.CO D'OR S.R.L.  
Via G. Garibaldi n.15  
74023 Grottaglie (TA)

PROGETTISTA  
Ing. Gaetano D'Oronzio  
Via Goito 14 - Colobraro (MT)