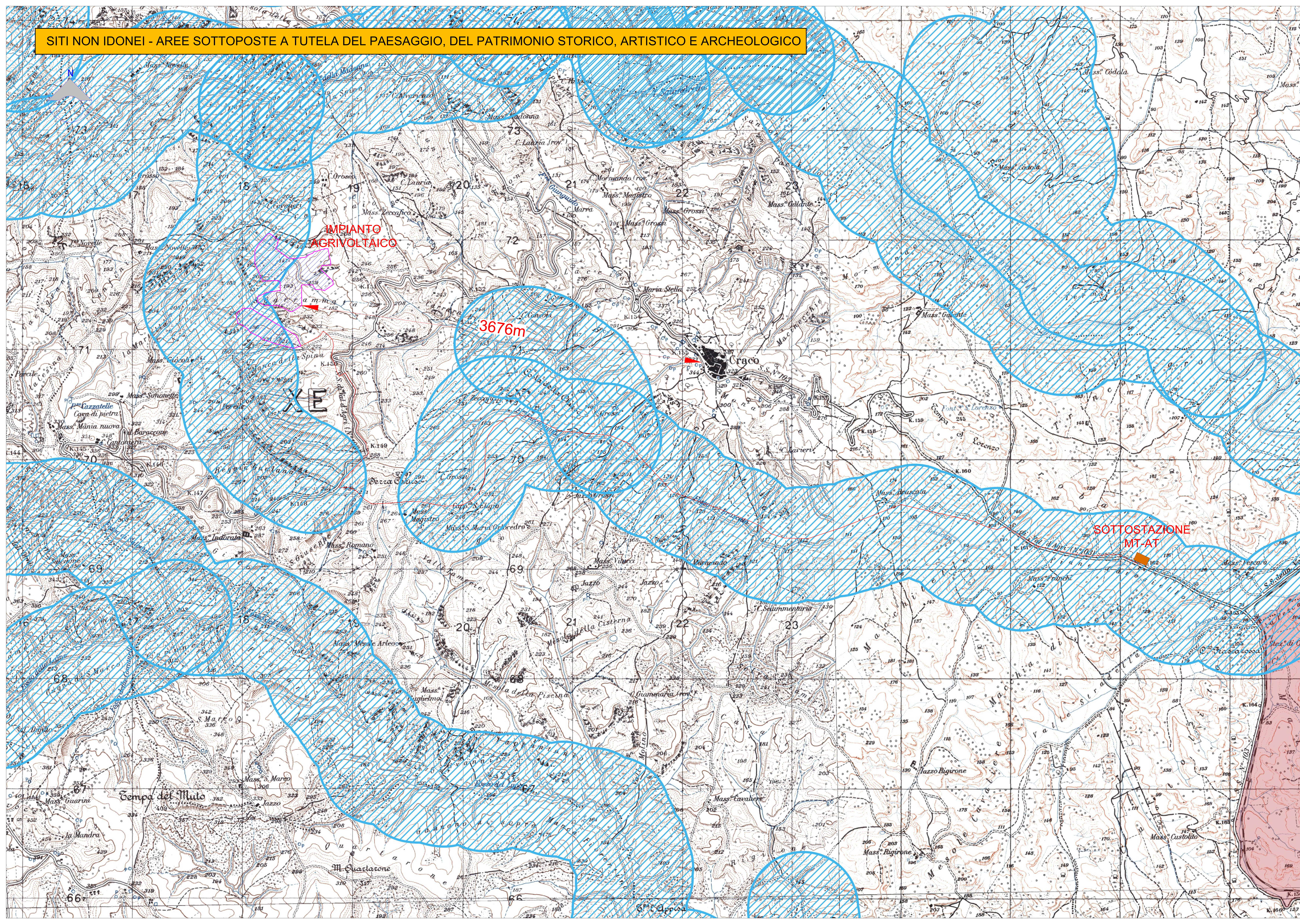











SITI NON IDONEI - AREE SOTTOPOSTE A TUTELA DEL PAESAGGIO, DEL PATRIMONIO STORICO, ARTISTICO E ARCHEOLOGICO



1

AREE SOTTOPOSTE A TUTELA DEL PAESAGGIO, DEL PATRIMONIO STORICO, ARTISTICO ED ARCHEOLOGICO

-  1.1 Siti inseriti nel patrimonio mondiale dell'UNESCO
-  1.2 Beni monumentali
-  1.3 Beni archeologici tutelati ope legis*
-  1.3 Aree di interesse archeologico-comparti
-  1.4 Aree già vincolate o in iter di istituzione-ex L. 1497/39
-  1.4 Territori costieri-buffer 5.000 m
-  1.4 Laghi, invasi artificiali-buffer 1.000 m
-  1.4 Fiumi, torrenti, corsi d'acqua-buffer 500 m
-  1.4 Montagne oltre i 1.200 m



<p>PROGETTO REV.00</p> <p>DESCRIZIONE E REVISIONE</p> <p>GVC</p> <p>SEMPRE INgegNERIA</p> <p>Nuovo Atlantide soc. coop. a r.l.</p> <p>Dott. Antonio Brusca</p> <p>Dott. ing. Paolo Cantelli</p> <p>MARMARIA SOLARE 10 s.r.l.</p> <p>Powertis</p> <p>Soltec</p> <p>COMUNE DI CRACO (MT)</p> <p>PROGETTO DEFINITIVO</p> <p>SITI NON IDONEI</p> <p>Aree sottoposte a tutela del paesaggio, del patrimonio storico, artistico ed archeologico</p>	<p>Elaborato</p> <p>File</p> <p>11/20</p> <p>1:1000</p> <p>A.12.a.4.32</p>
--	--