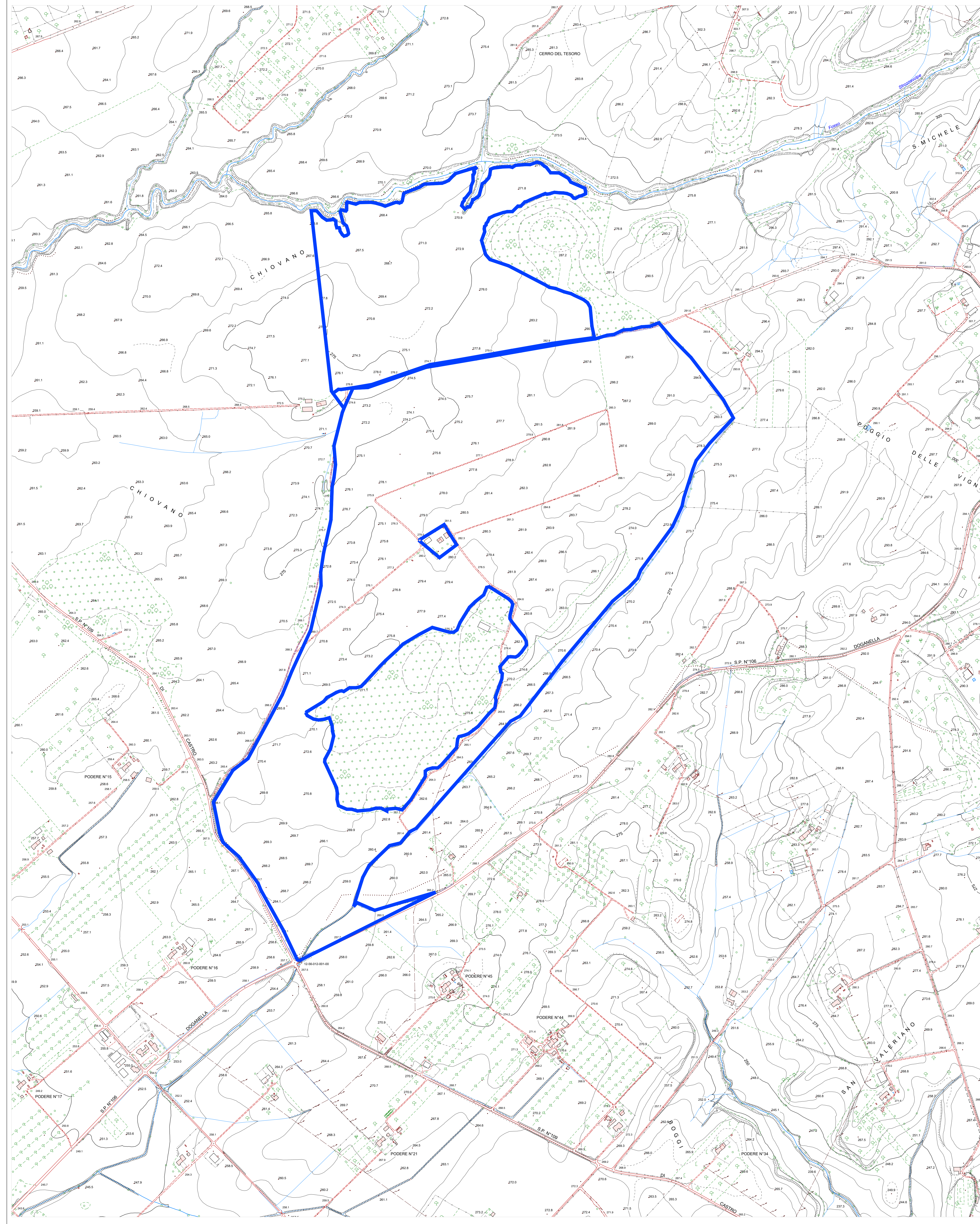


INQUADRAMENTO SU CTR E IGM

Inquadramento su CTR scala 1:5.000

(fonte: portale regione Viterbo)



Perimetro del lotto

Classe 01 Orografia

Legend for Class 01 Orografia (Topography) with symbols and codes for features like curves, slopes, and artificial structures.

Classe 02 Idrografia

Legend for Class 02 Idrografia (Hydrography) with symbols and codes for rivers, streams, lakes, and water management structures.

Classe 03 Vegetazione

Legend for Class 03 Vegetazione (Vegetation) with symbols and codes for various types of trees and plantations.

Classe 04 Ferrovie

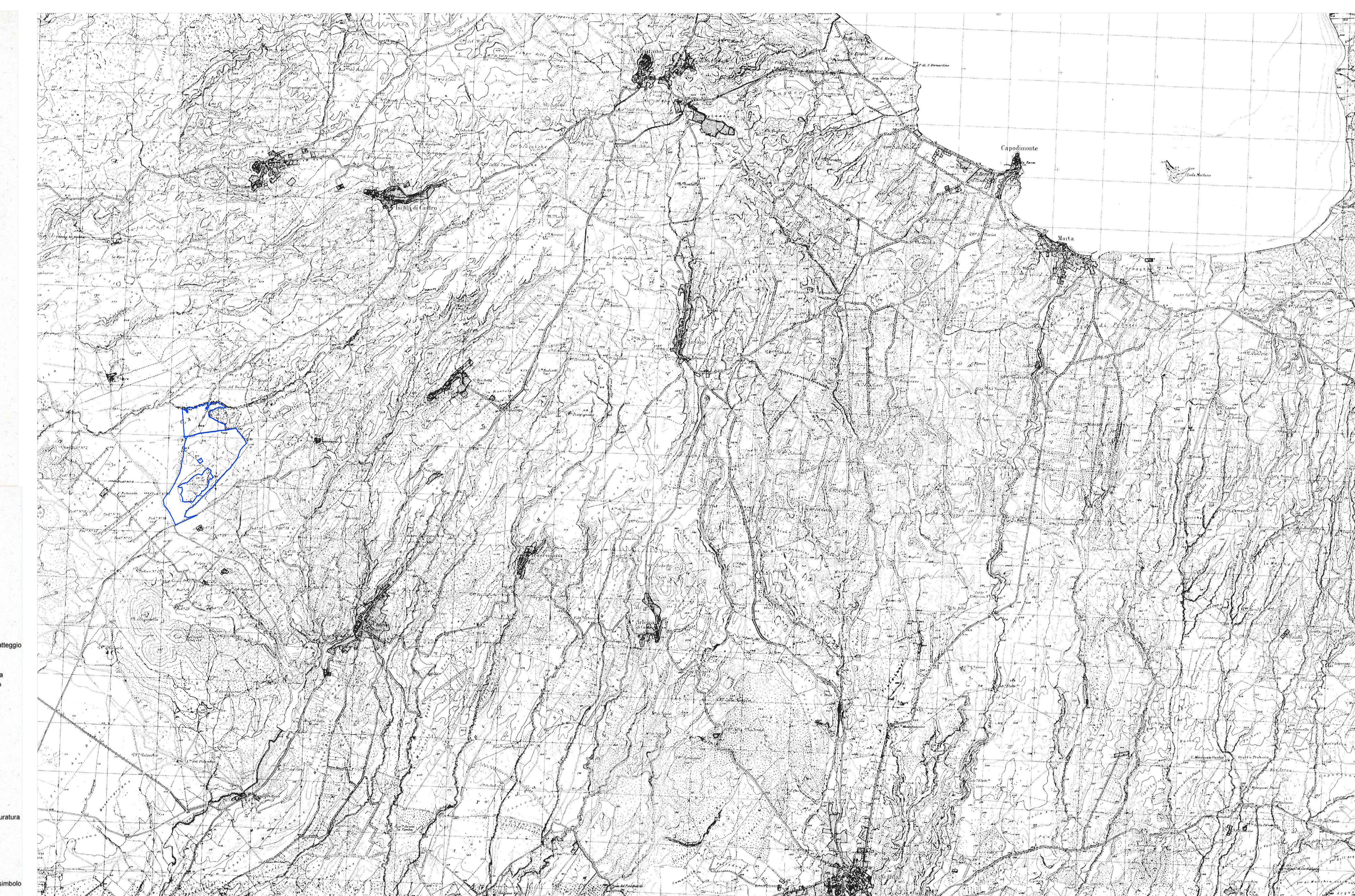
Legend for Class 04 Ferrovie (Railways) with symbols and codes for different types of railway lines and stations.

Classe 05 Viabilità

Legend for Class 05 Viabilità (Roads) with symbols and codes for various road types and infrastructure.

Inquadramento su IGM scala 1:50.000

(fonte: portale regione Viterbo)



Classe 06 Edifici e costruzioni

Legend for Class 06 Edifici e costruzioni (Buildings and Structures) with symbols and codes for various types of buildings and structures.

Classe 06 Edifici e costruzioni

Legend for Class 06 Edifici e costruzioni (Buildings and Structures) with symbols and codes for various types of buildings and structures.

Classe 07 Limiti amministrativi

Legend for Class 07 Limiti amministrativi (Administrative Limits) with symbols and codes for regional and municipal boundaries.

Classe 08 Elementi piano-altimetrici

Legend for Class 08 Elementi piano-altimetrici (Planimetric and Altimetric Elements) with symbols and codes for various terrain features.

Project information for 'COMUNE DI CELLERE (VT)'. Includes the logo of Regione Lazio, project title 'Progettazione della Centrale Solare "Energia dell'olio" da 107.131 KwP', and details about the proponent (Pacífico Berillo s.r.l.), investor (OXY CAPITAL ADVISORS S.R.L.), and project partners (Olio Dante, Progetto Avete, Aedes Group, Mare Rinnovabili).