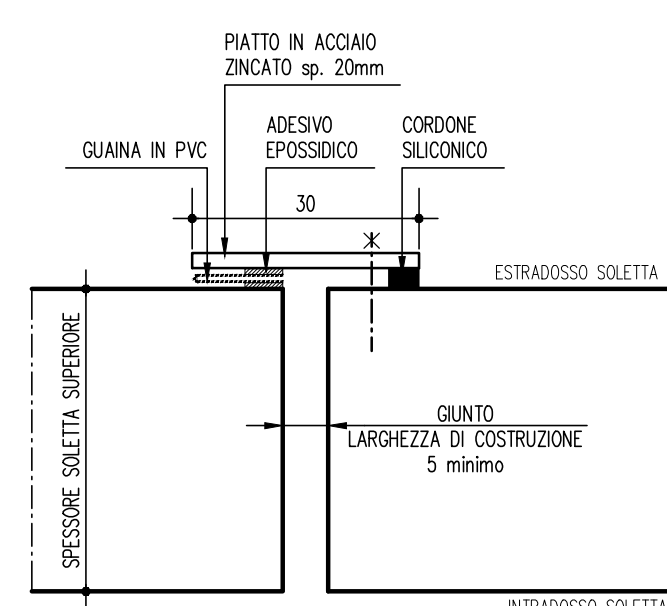
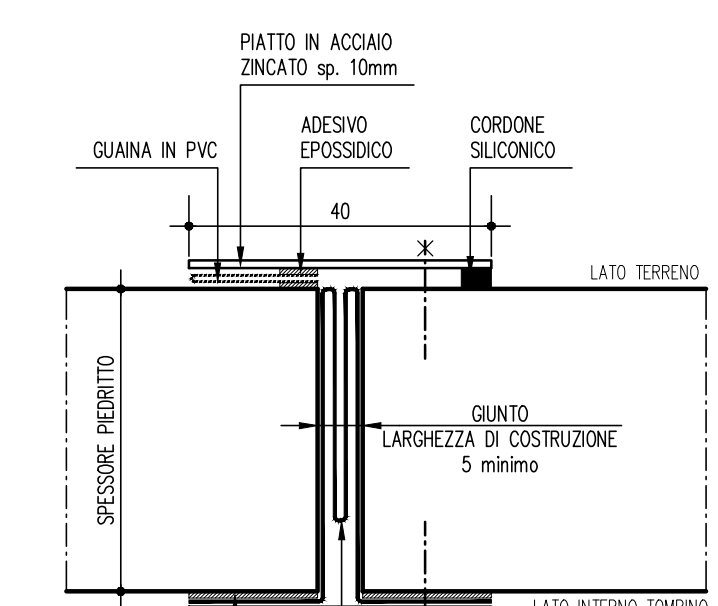


DETTAGLI IMPERMEABILIZZAZIONI

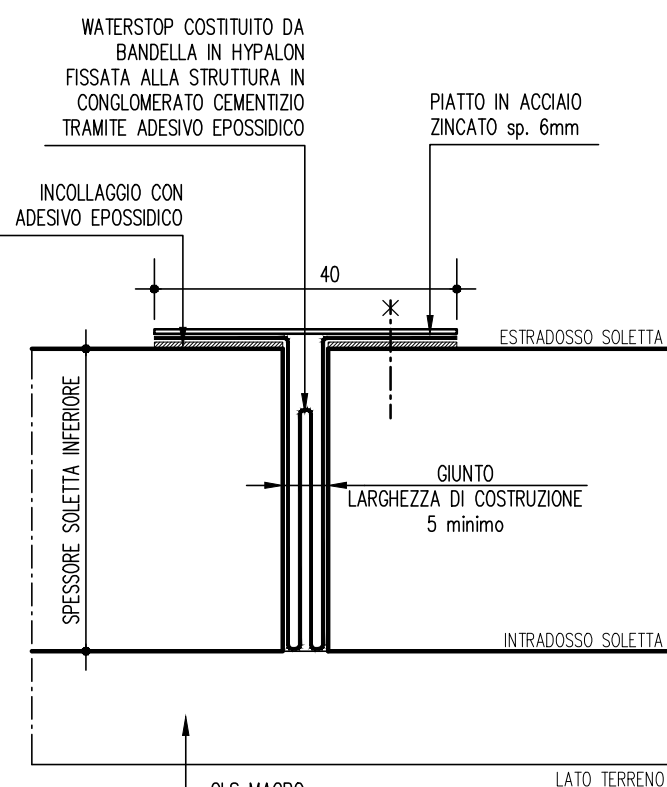
DETTAGLIO SU GIUNTO SOLETTA SUPERIORE
SCALA 1:10



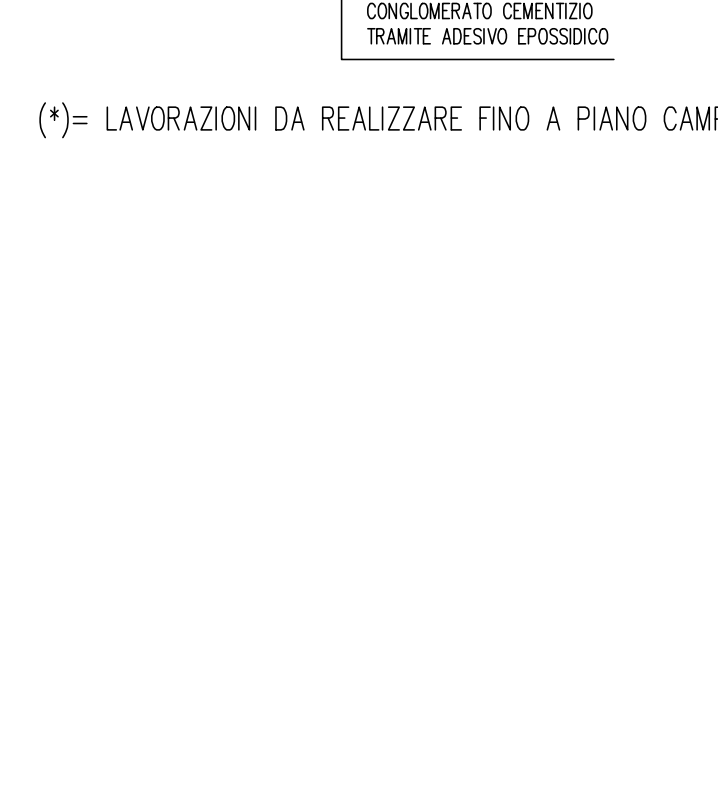
DETTAGLIO SU GIUNTO PIEDRITTI
SCALA 1:10



DETTAGLIO SU GIUNTO SOLETTA INFERIORE
SCALA 1:10

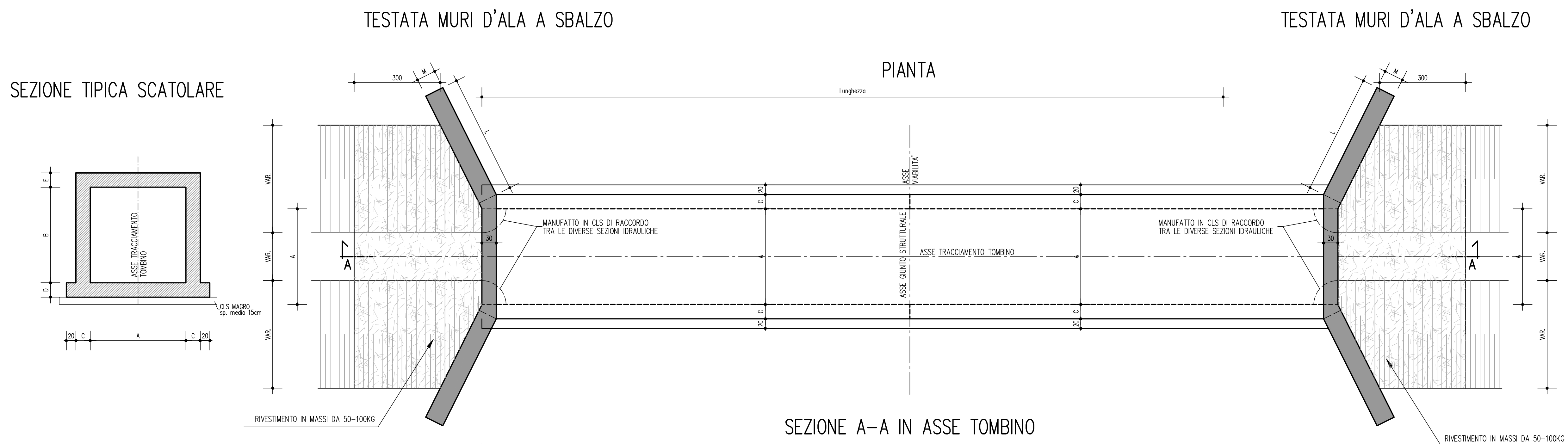


DETTAGLIO SU GIUNTO PIEDRITTI
SCALA 1:10

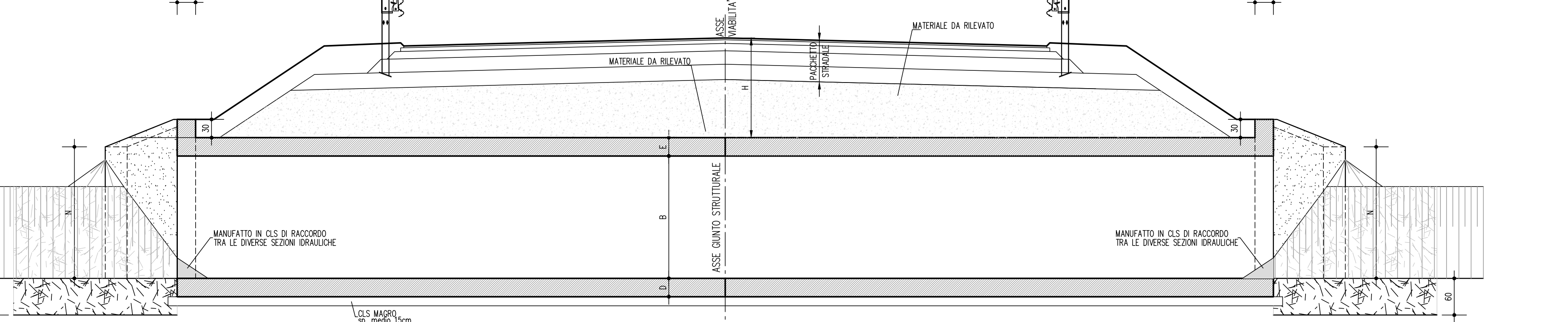


SEZIONI TIPO RAMPE DEI CAVALCAVIA DELLE VIABILITA' INTERFERITE

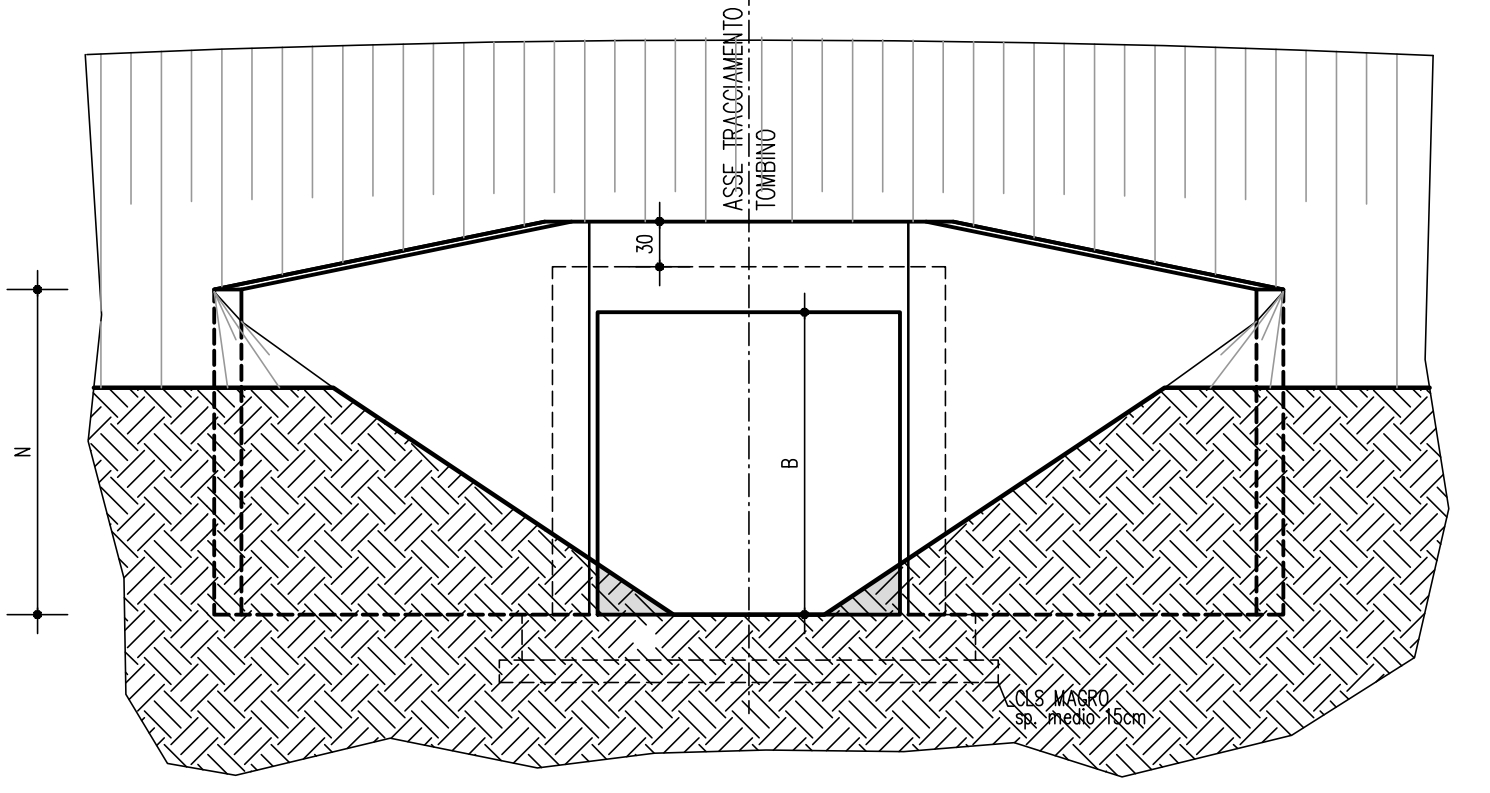
TOMBINO SCATOLARE
SCALA 1:50



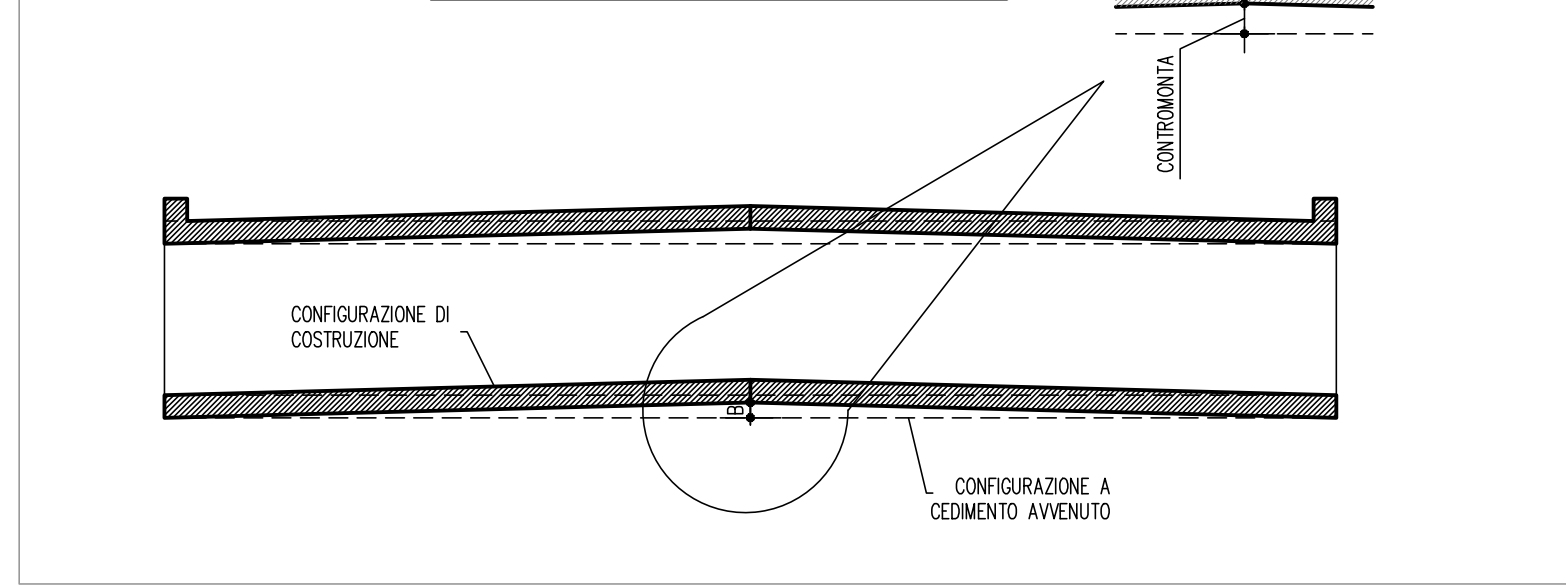
SEZIONE A-A IN ASSE TOMBINO



VISTA FRONTALE TESTATA
MURI D'ALA A SBALZO

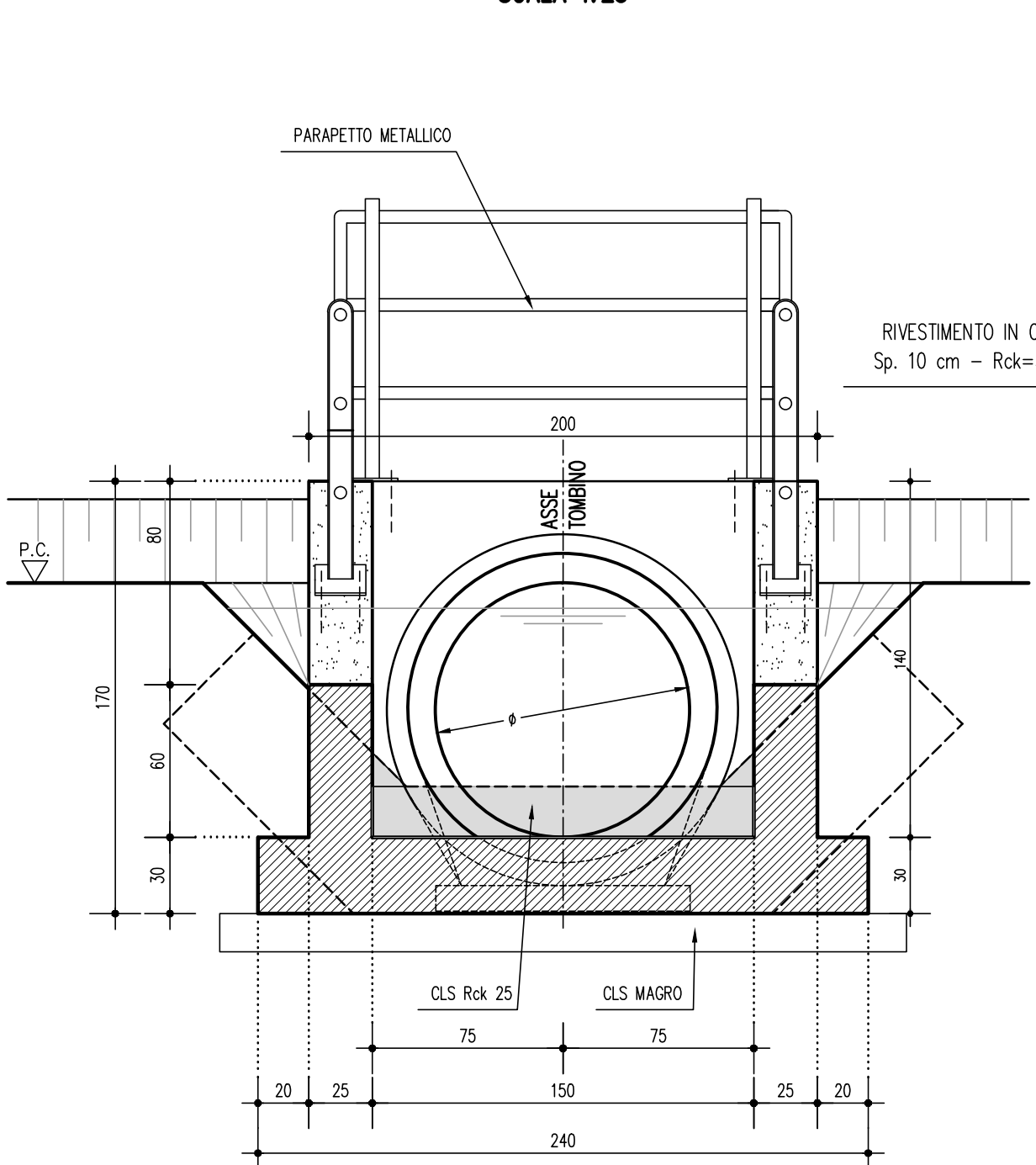


SCHEMA CONTROMONTA

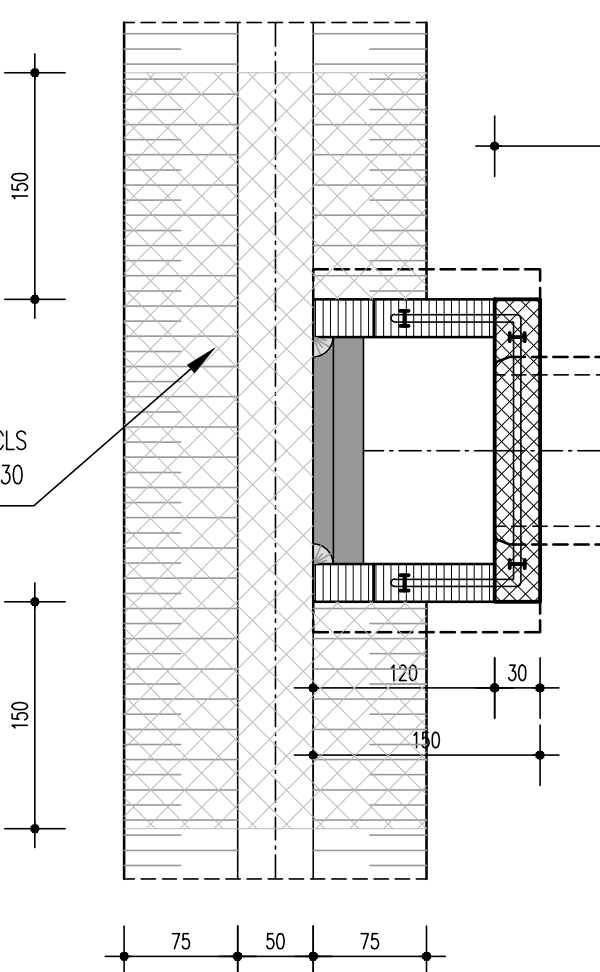


TOMBINO CIRCOLARE
SCALA 1:50

SEZIONE FRONTALE TESTATA
IMBOCCO LONGITUDINALE
SCALA 1:25



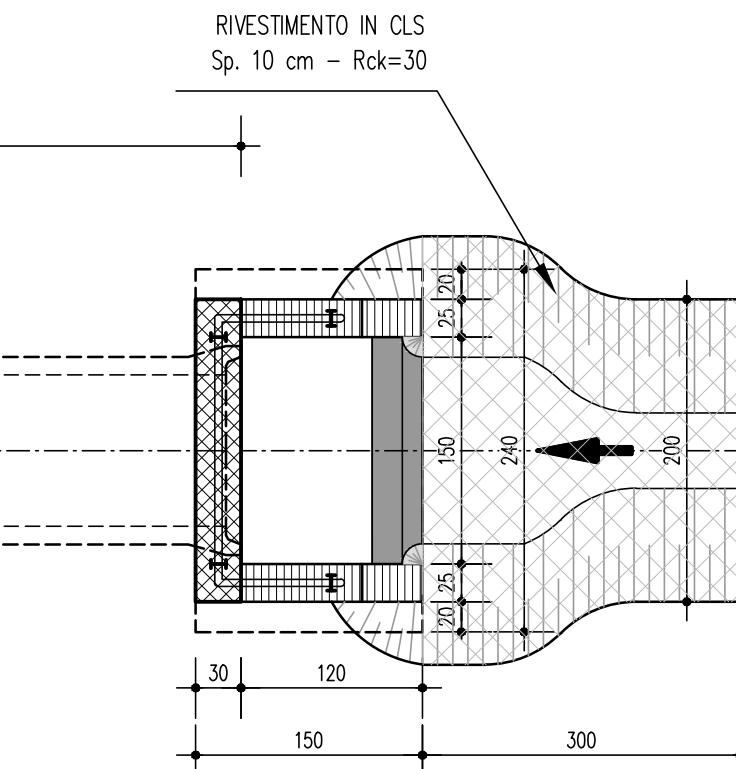
IMBOCCO TRASVERSALE



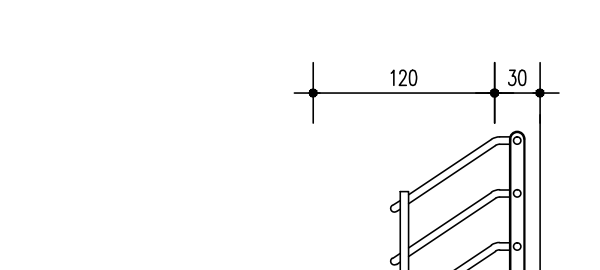
PIANTA

SEZIONE LONGITUDINALE

IMBOCCO LONGITUDINALE



IMBOCCO TRASVERSALE



IMBOCCO LONGITUDINALE

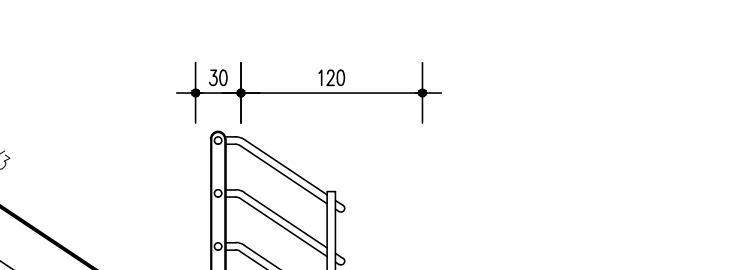


Table with columns for 'OPERA', 'CODICE', 'PROGRES.', 'DIMENSIONI', and 'VALORE CONTROMONTA'. It lists various manhole types (rectangular and circular) with their dimensions and anti-lift values.

KEY-PLAN

LEGENDA

ELABORATI DI RIFERIMENTO

List of reference documents including technical specifications and design documents for manholes and drainage systems.

CARATTERISTICHE DEI MATERIALI

Table of material characteristics and exposure classes for the manhole structures.

NOTE

Project title: 'AUTOSTRADA REGIONALE CISPADANA DAL CASELLO DI REGGIOLO-ROLO SULLA A22 AL CASELLO DI FERRARA SUD SULLA A13'. Includes logos for Regione Emilia-Romagna and ARCA, and detailed project information.

Table with columns for 'IDENTIFICAZIONE ELABORATO', 'DESCRIZIONE', 'LUCARELLI DE FAZZO SALS...', and 'DATA'. It provides a detailed record of the project's development stages.