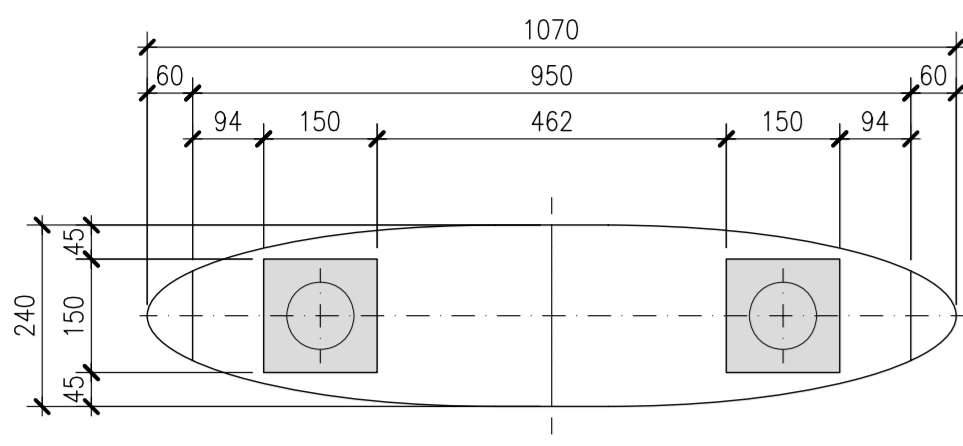
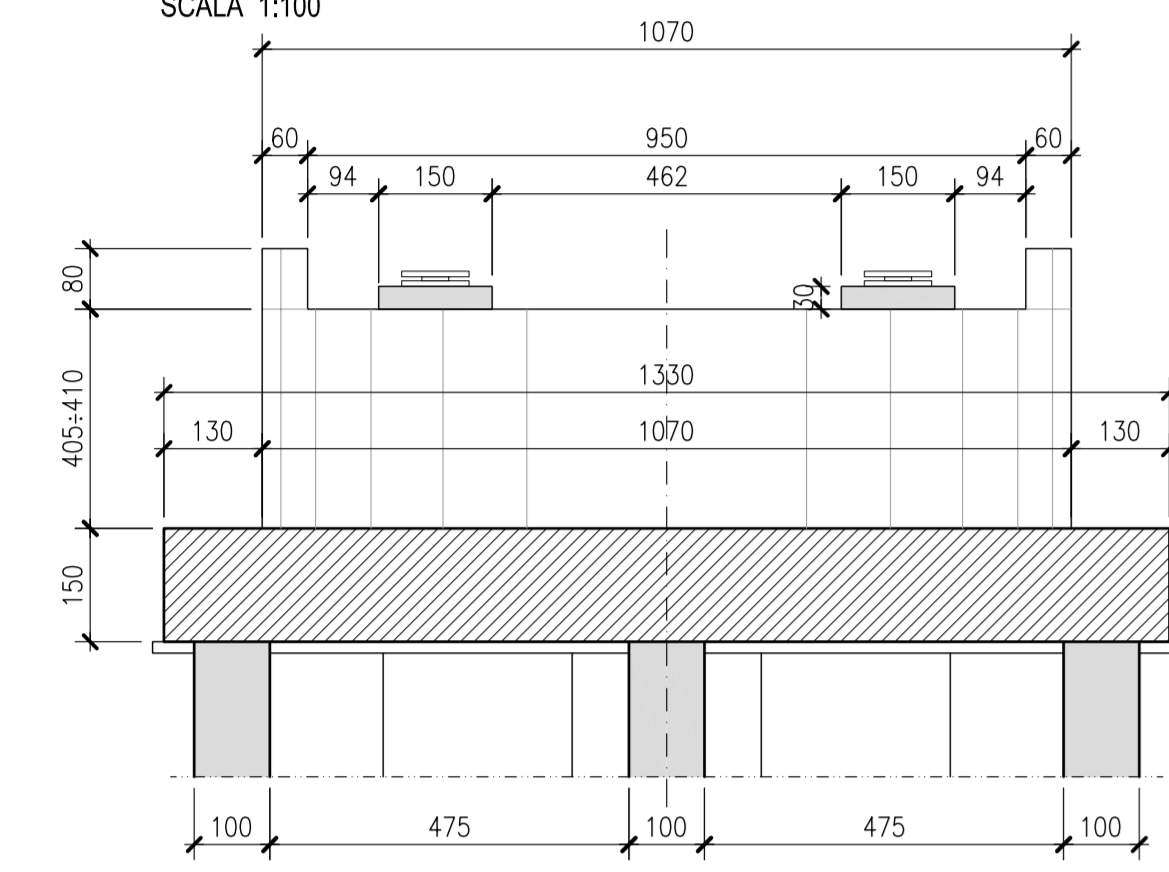


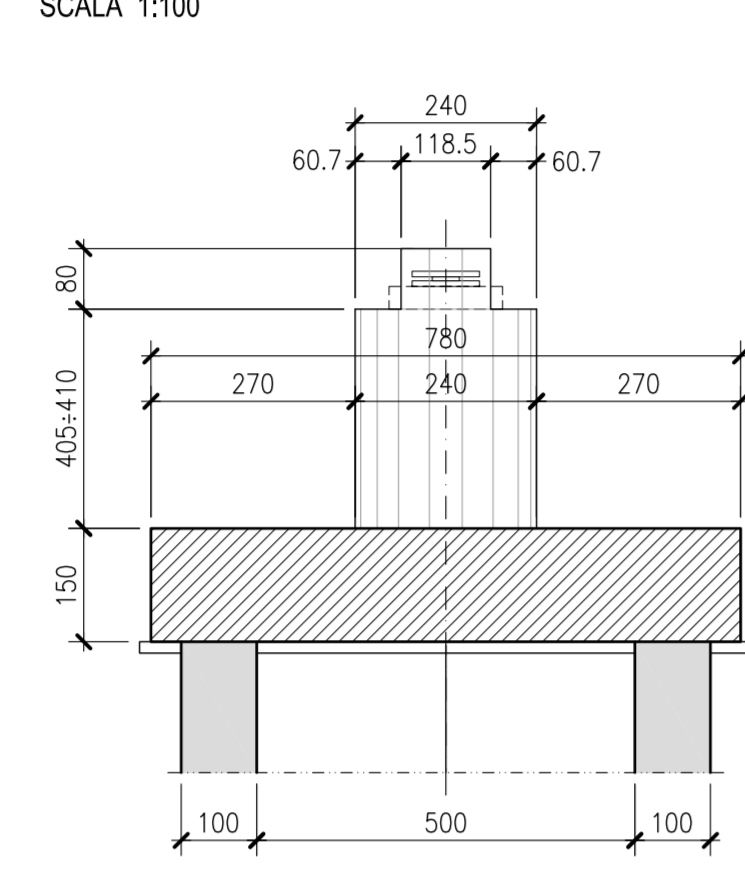
PIANTA PULVINO  
CARPENTERIA  
SCALA 1:100



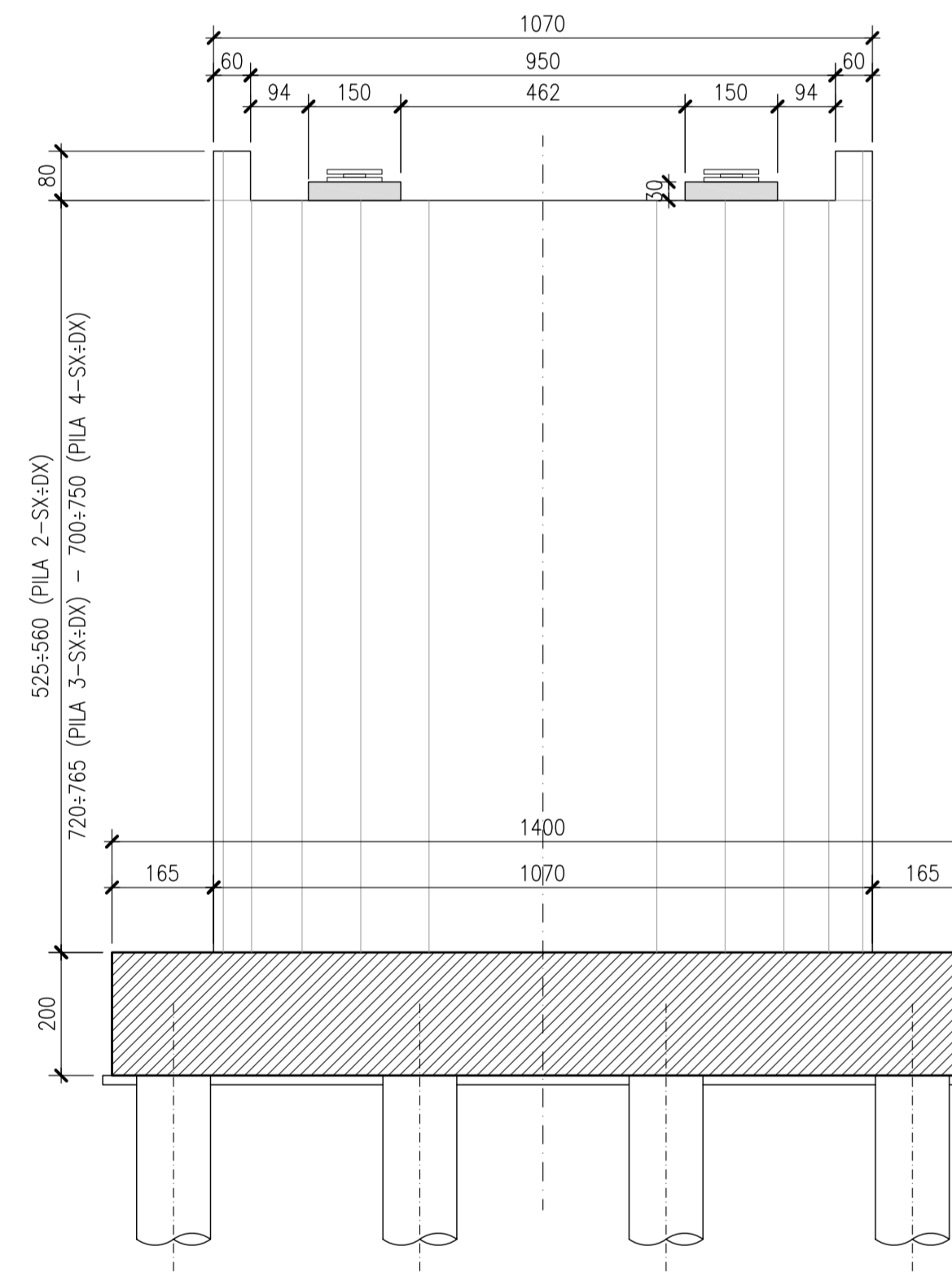
VISTA FRONTALE P.1  
CARPENTERIA  
SCALA 1:100



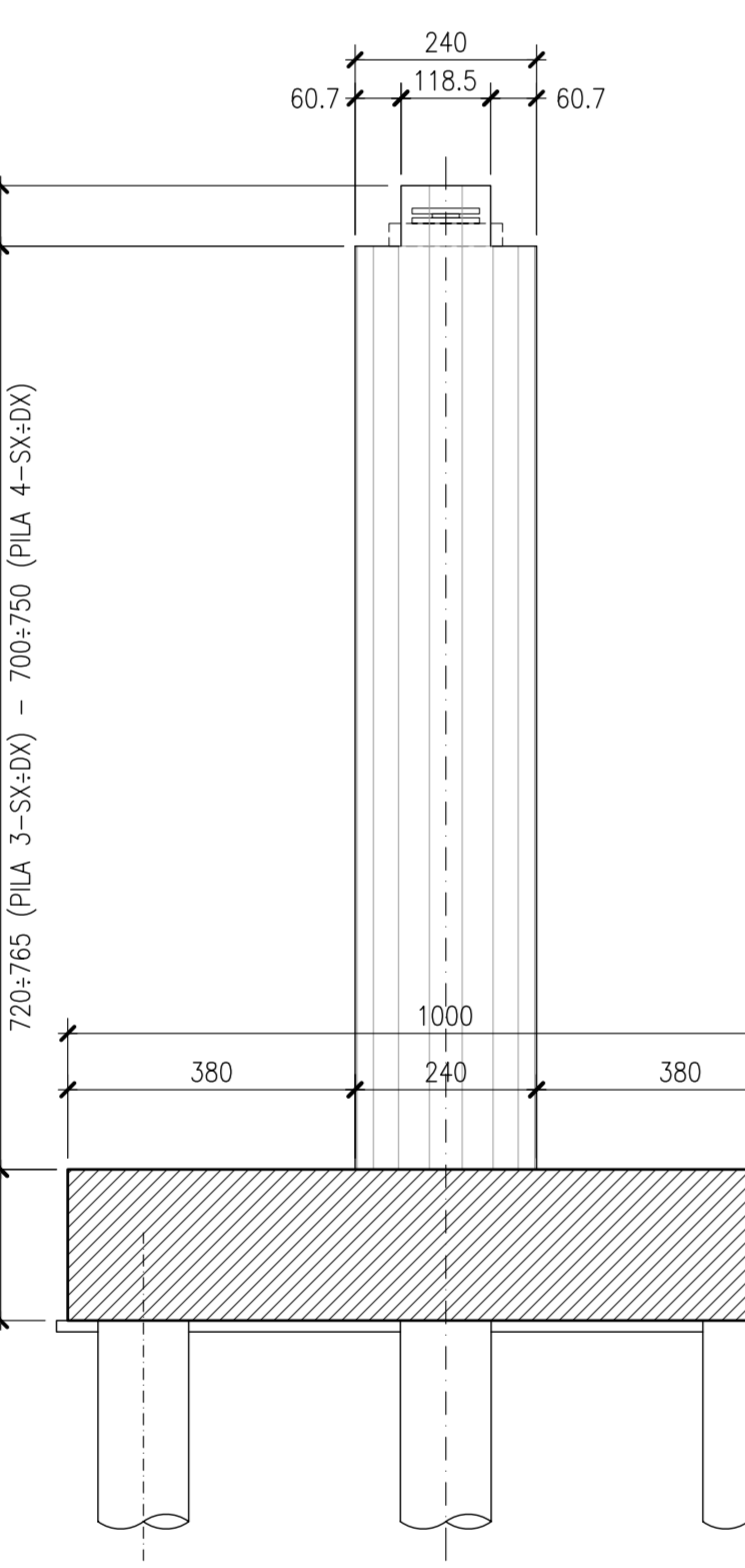
VISTA LATERALE P.1  
CARPENTERIA  
SCALA 1:100



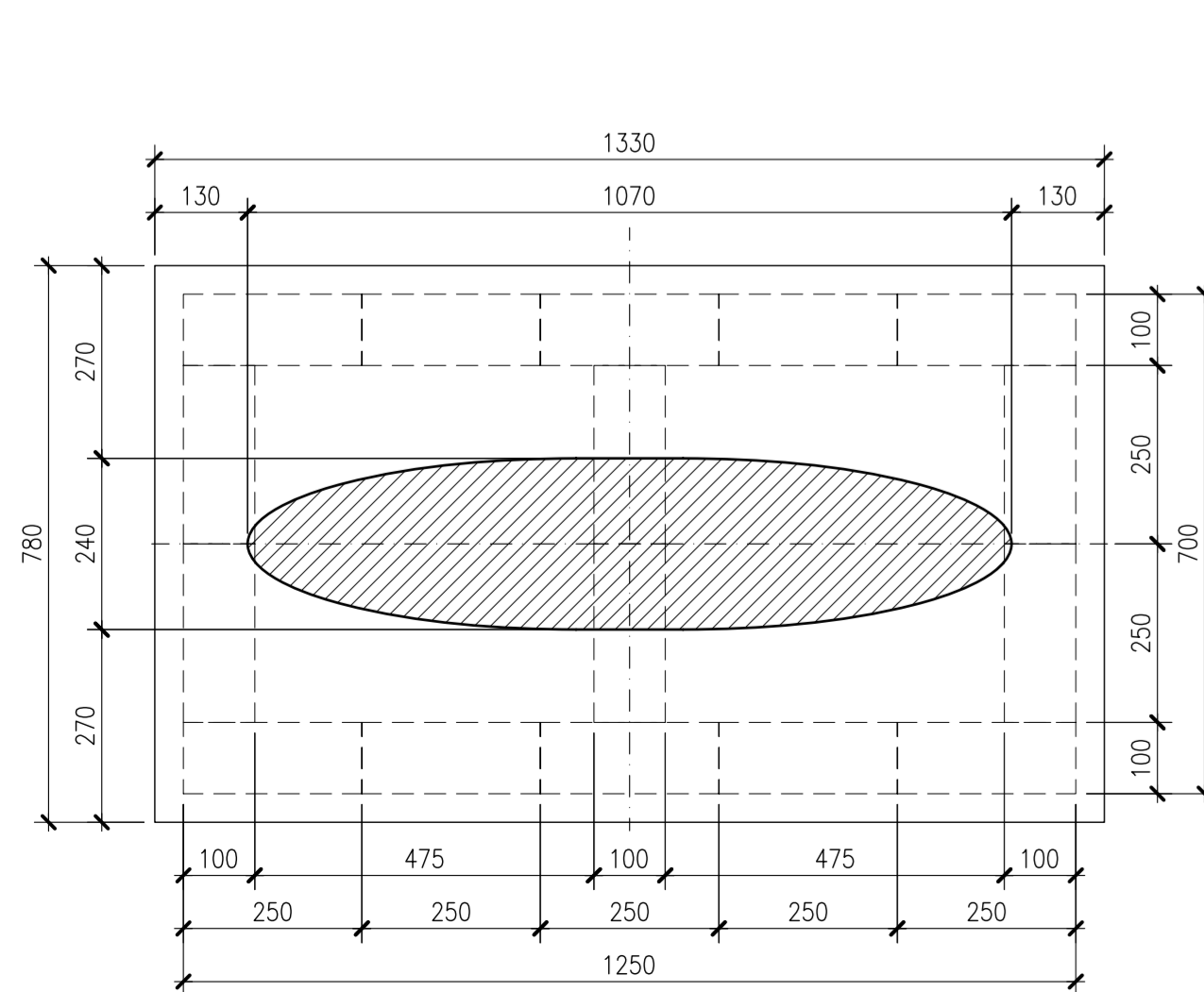
VISTA FRONTALE PILE P.2-P.3-P.4  
CARPENTERIA  
SCALA 1:100



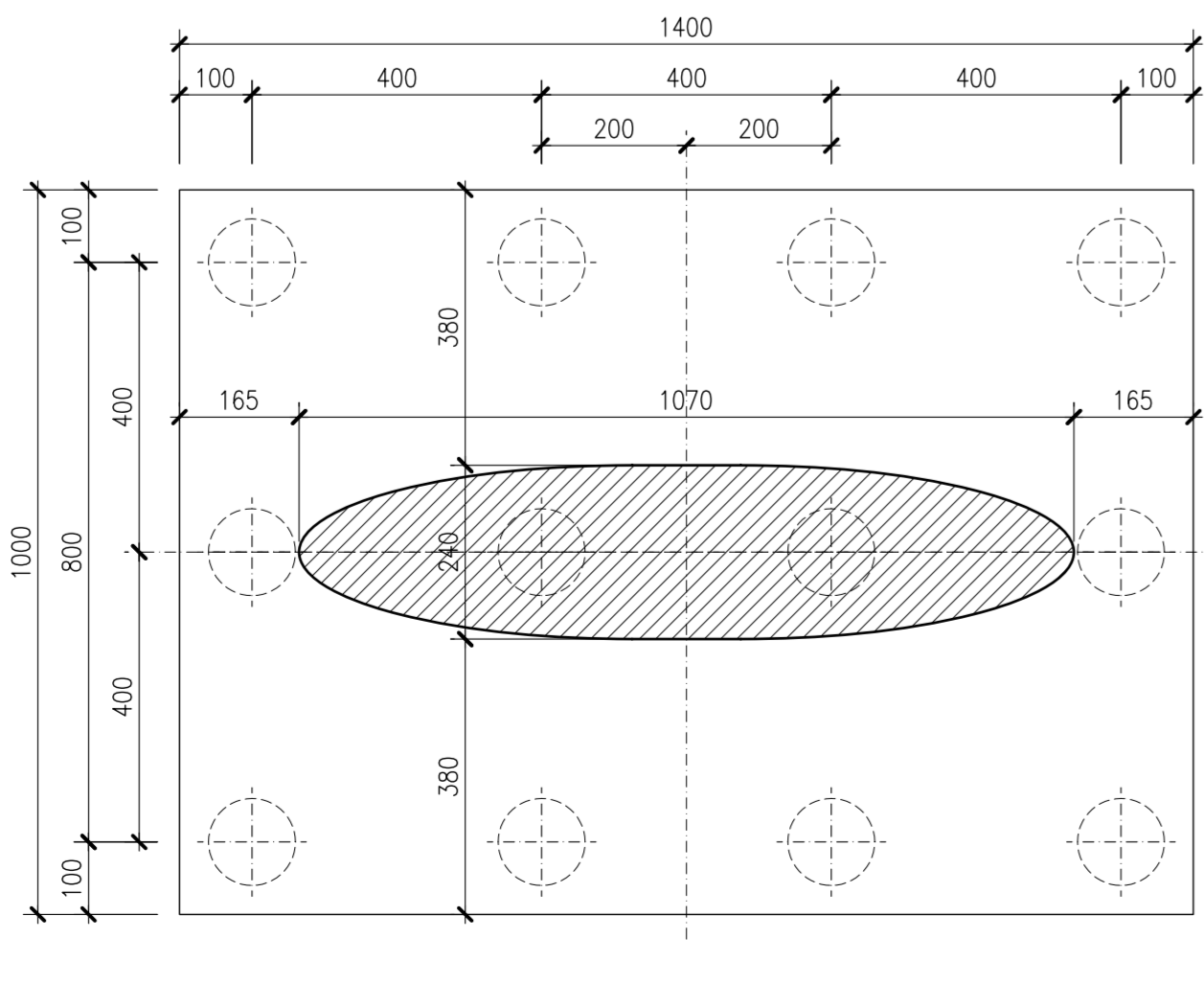
VISTA LATERALE PILE P.2-P.3-P.4  
CARPENTERIA  
SCALA 1:100



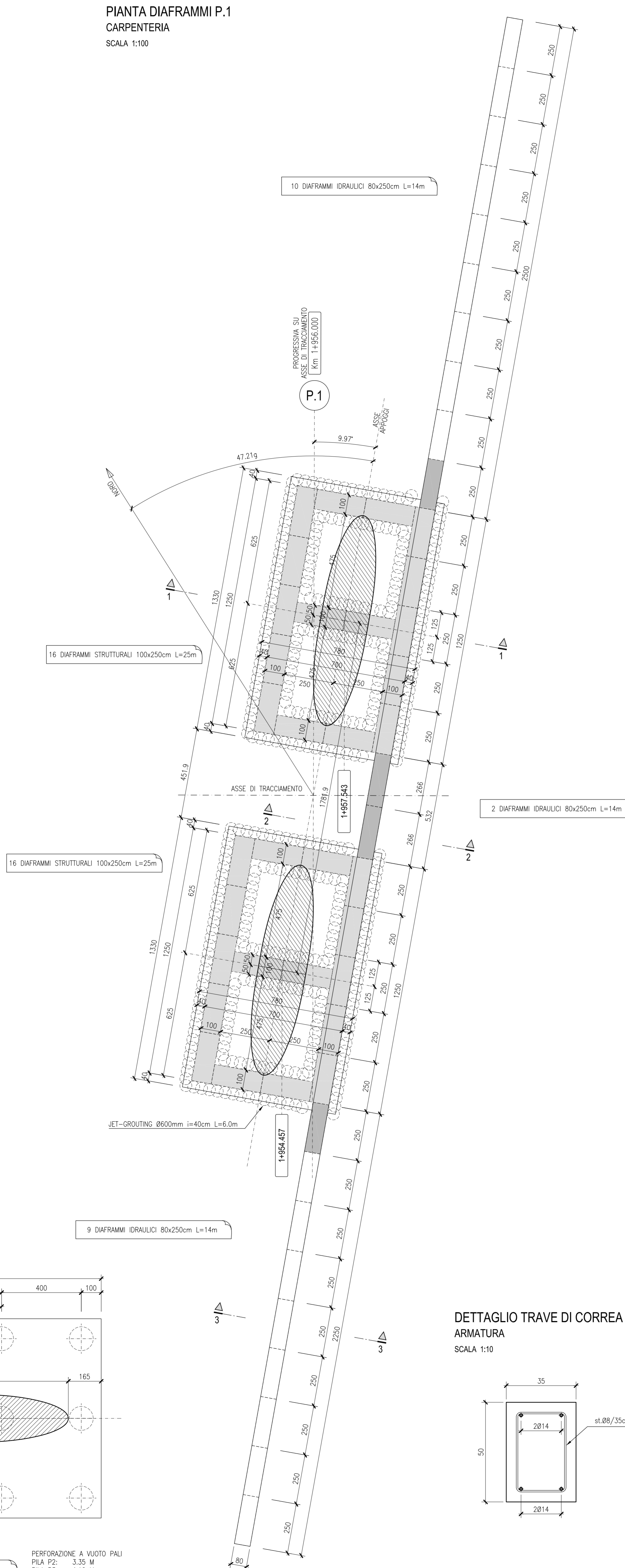
PIANTA PLINTO DI FONDAZIONE P.1  
CARPENTERIA  
SCALA 1:100



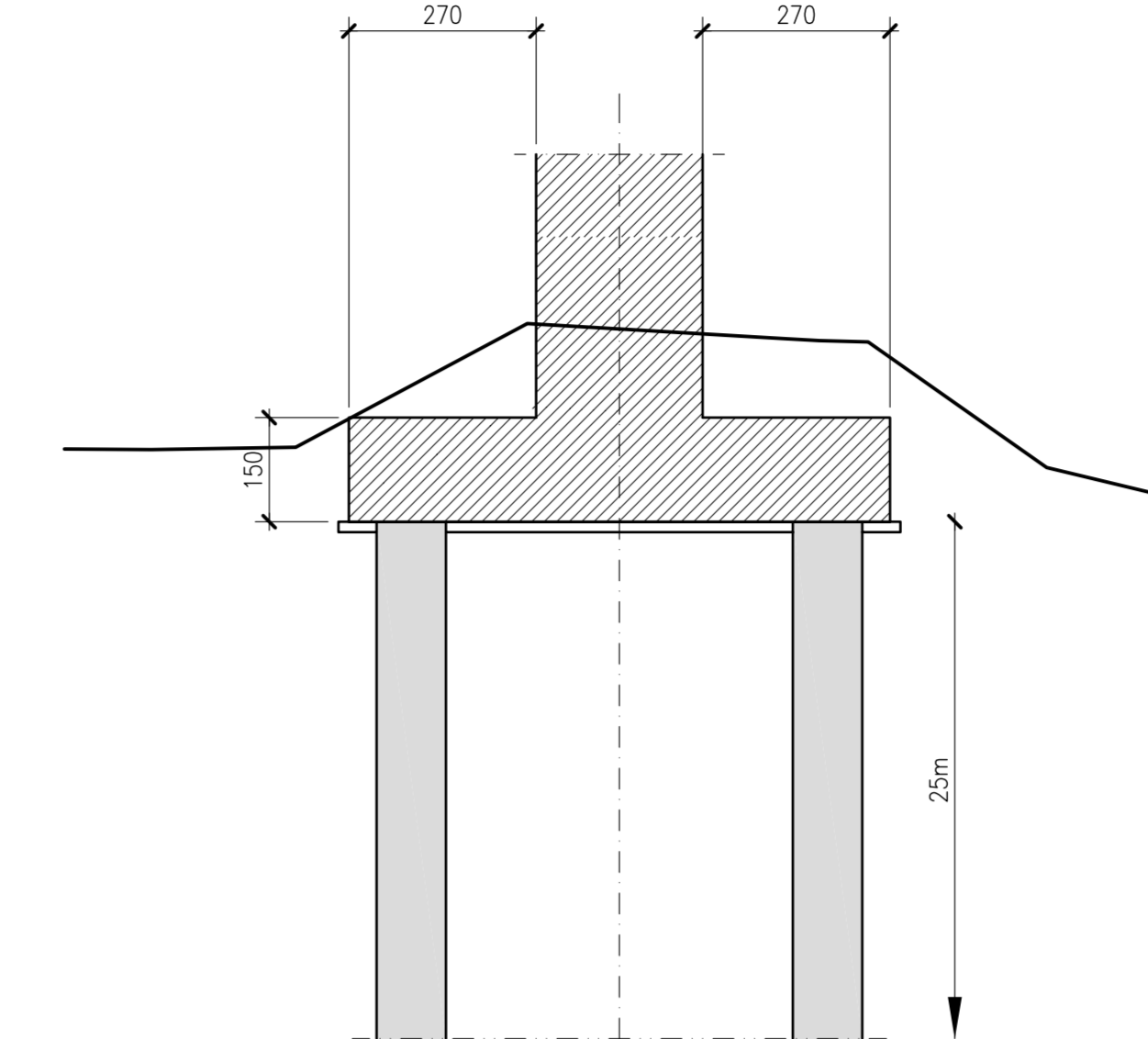
PIANTA PLINTO DI FONDAZIONE P.2+P.4  
CARPENTERIA  
SCALA 1:100



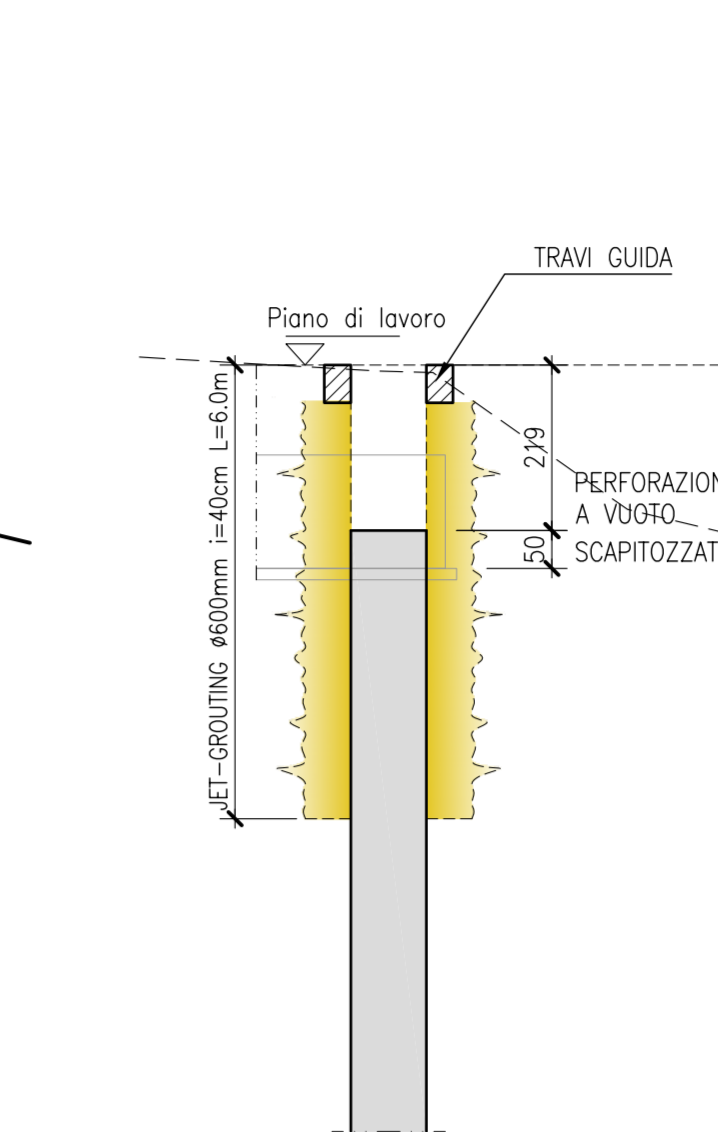
PIANTA DIAFRAMMI P.1  
CARPENTERIA  
SCALA 1:100



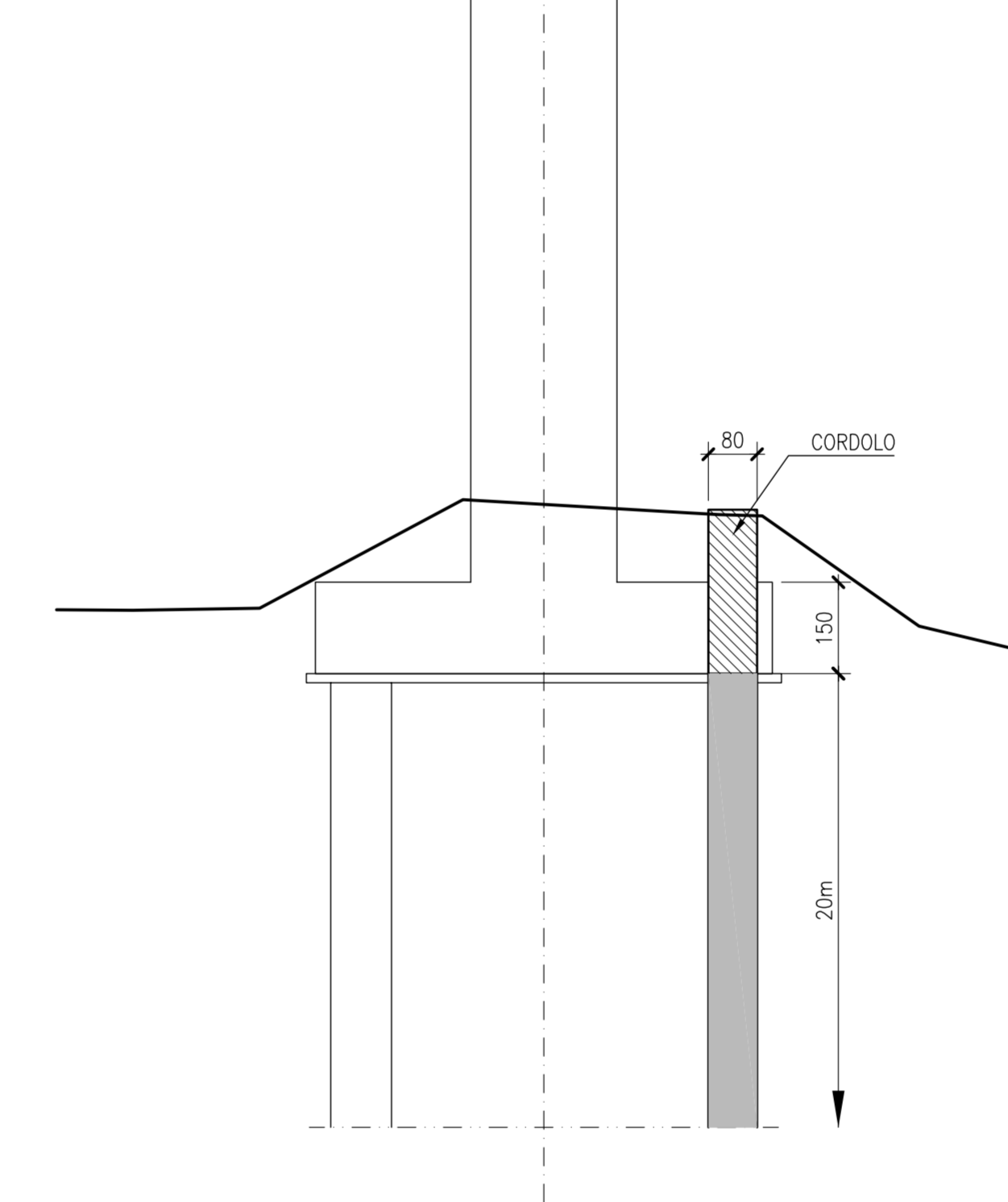
SEZIONE 1-1  
CARPENTERIA  
SCALA 1:100



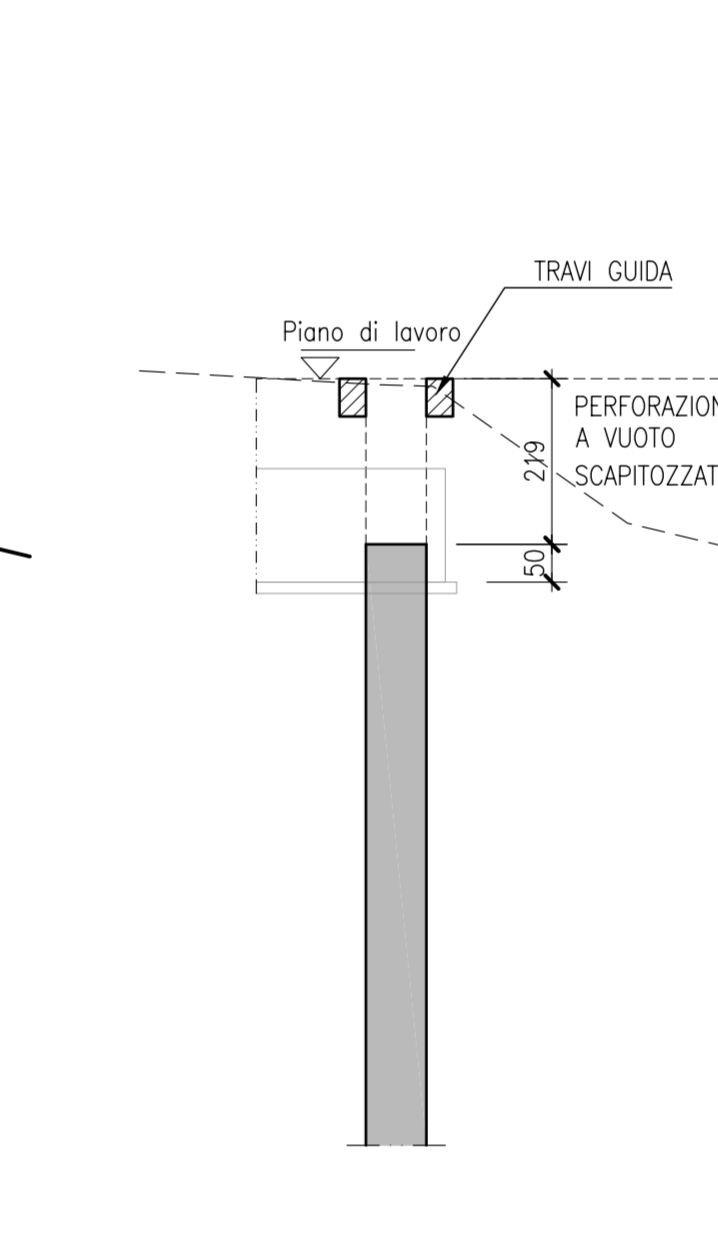
MODALITA' ESECUTIVE DIAFRAMMI  
SCALA 1:100



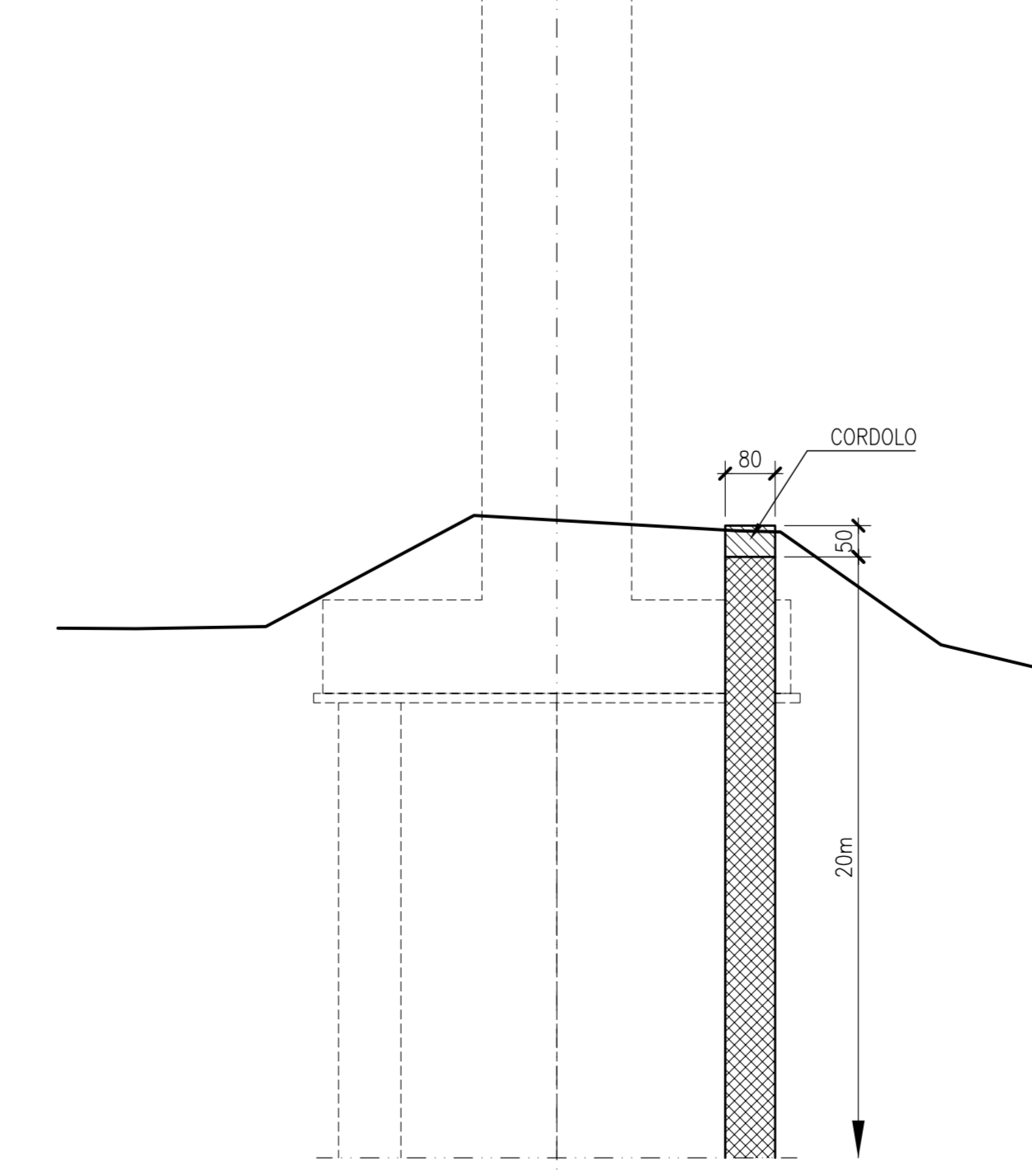
SEZIONE 2-2  
CARPENTERIA  
SCALA 1:100



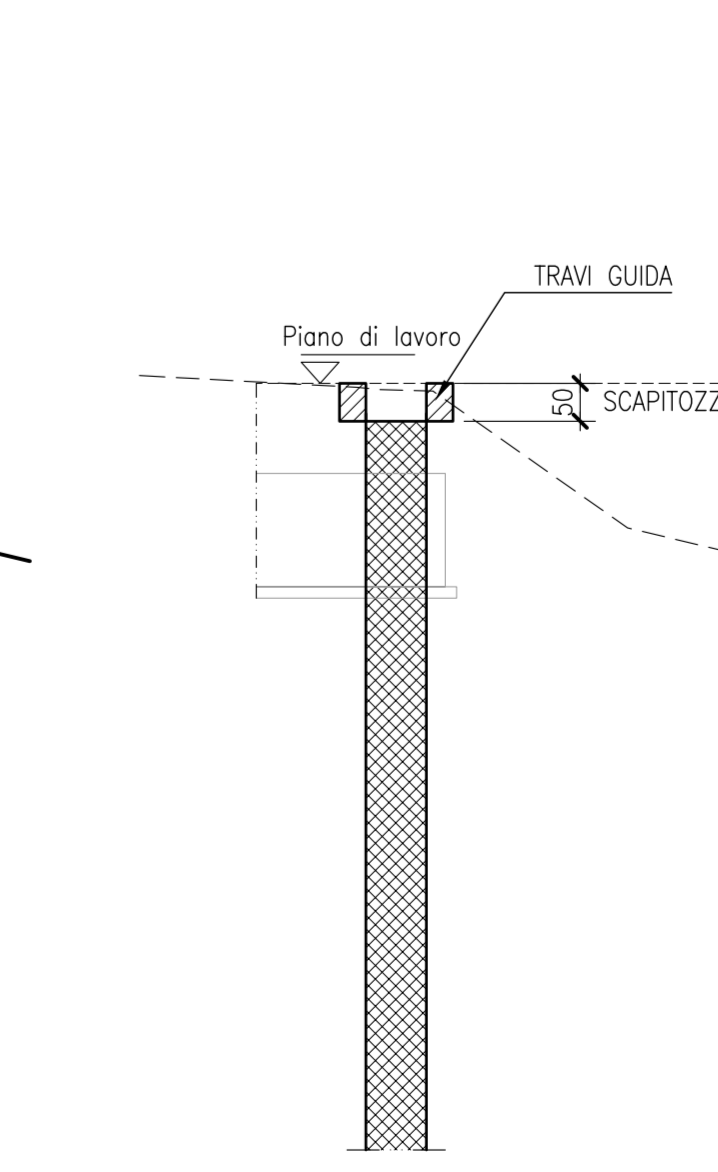
MODALITA' ESECUTIVE DIAFRAMMI  
SCALA 1:100



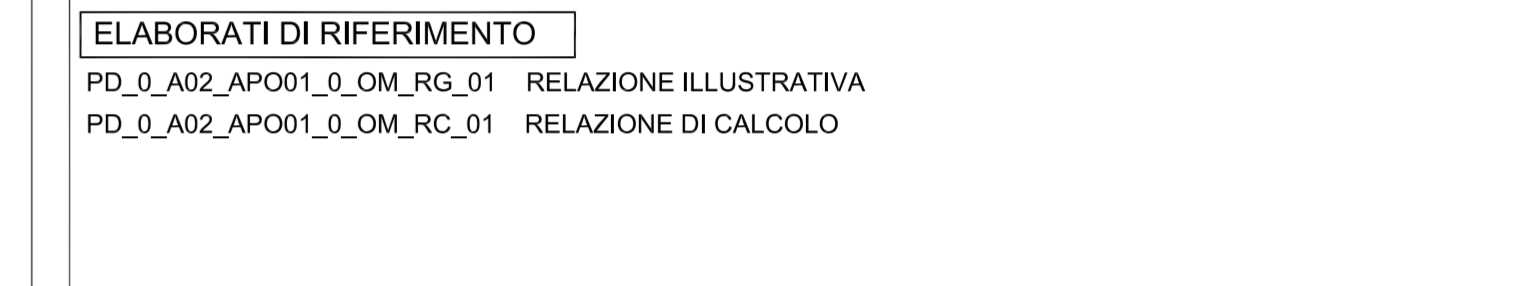
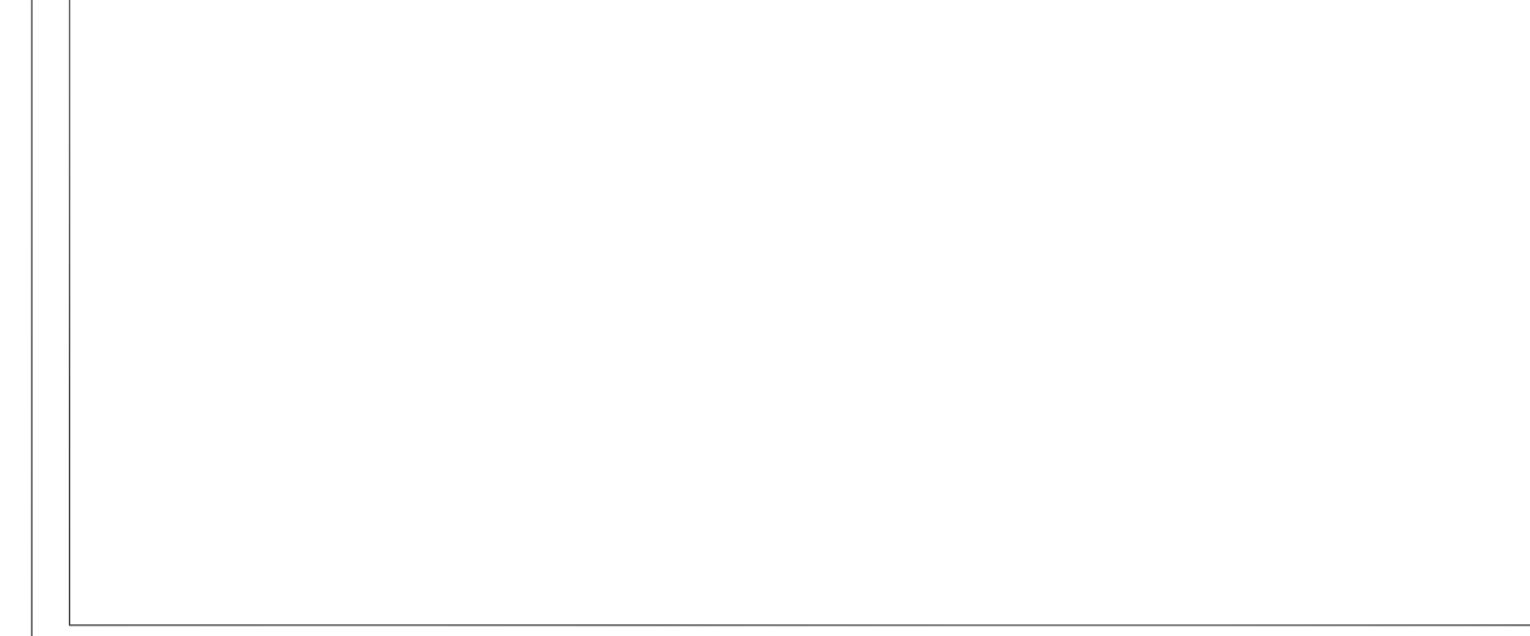
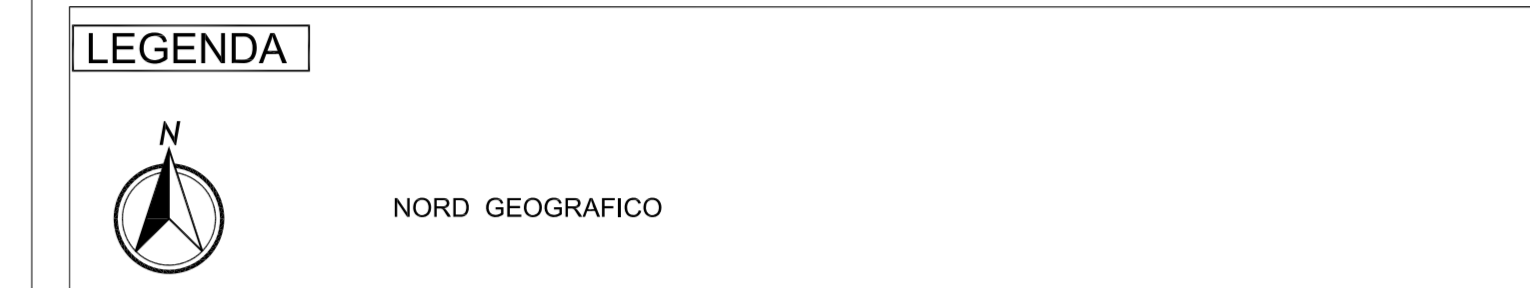
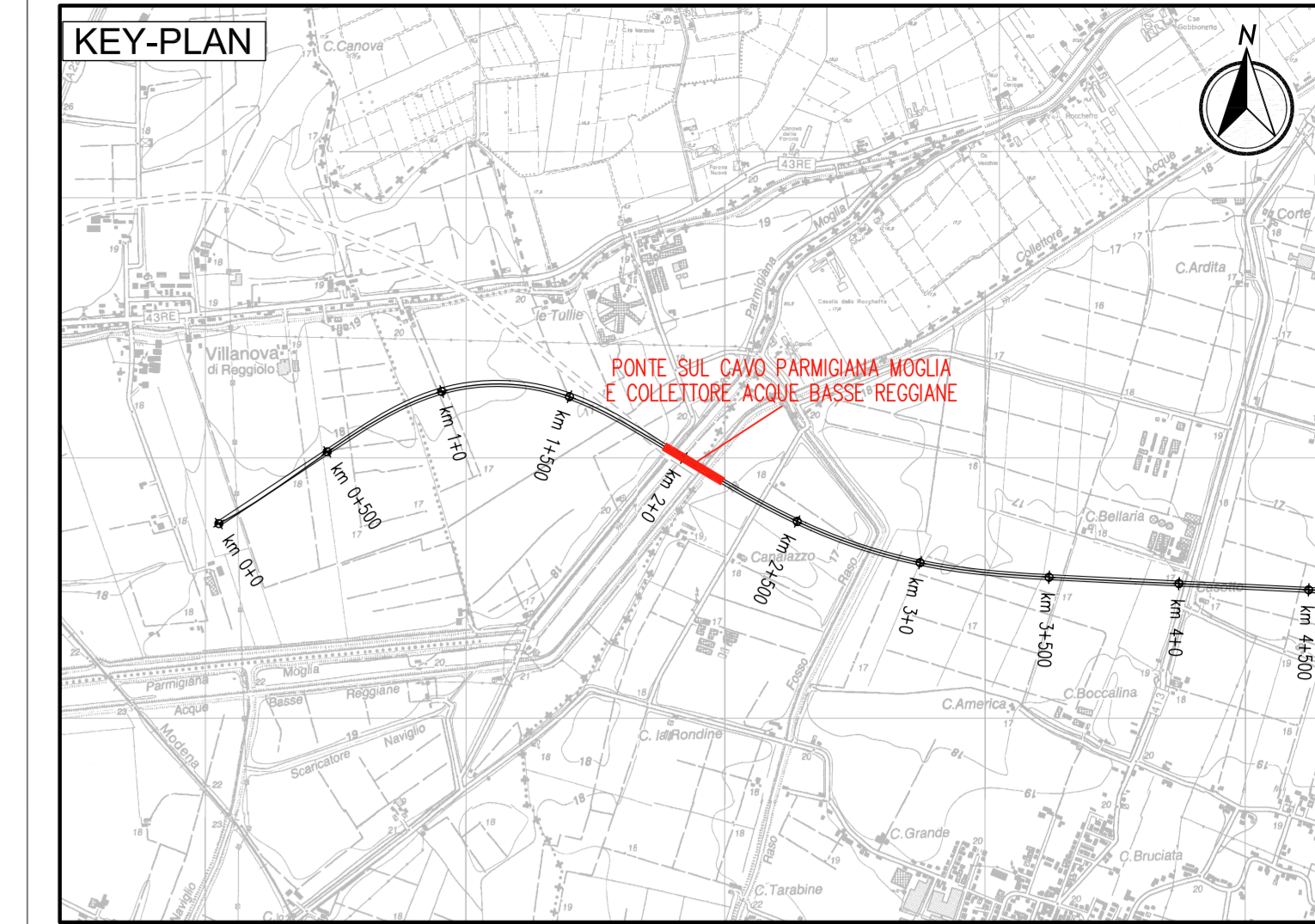
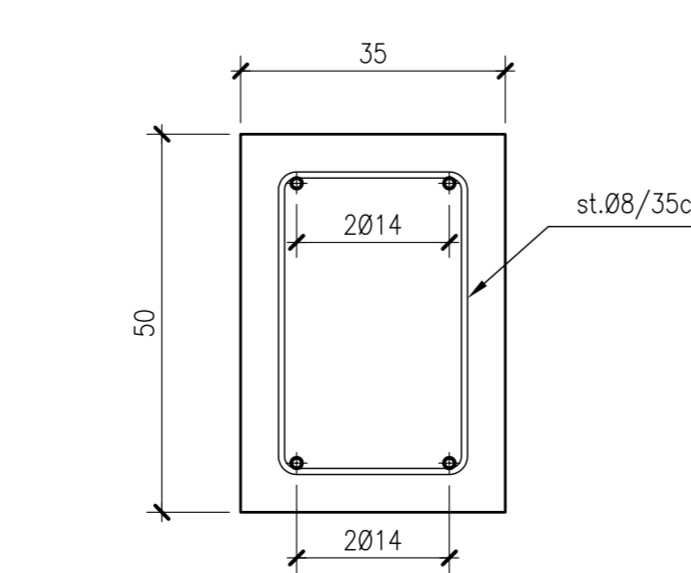
SEZIONE 3-3  
CARPENTERIA  
SCALA 1:100



MODALITA' ESECUTIVE DIAFRAMMI  
SCALA 1:100



DETTAGLIO TRAVE DI CORREA ARMATURA  
SCALA 1:10



IL CONCESSIONARIO  
**ARC** AUTOSTRADA REGIONALE CISPADANA

IL CONCESSIONARIO  
**Regione Emilia-Romagna**

**AUTOSTRADA REGIONALE CISPADANA**  
DAL CASELLO DI REGGIOLO-ROLO SULLA A22  
AL CASELLO DI FERRARA SUD SULLA A13  
CODICE C.U.P. E8180800060009

**PROGETTO DEFINITIVO**

**ASSE AUTOSTRADALE (COMPRESIVO DEGLI INTERVENTI LOCALI DI COLLEGAMENTO VIARIO AL SISTEMA AUTOSTRADALE)**  
OPERE STRUTTURALI

OPERE D'ARTE MAGGIORI - PONTI  
APO01 - PONTE SUL CAVO PARMIGIANA-MOGLIA E COLLETTORE ACQUE BASSE REGGIANE  
PILE E FONDAZIONI A DIAFRAMMA

IL PROGETTISTA  
Ing. Antonello Mezzalana  
Albo Ing. Bologna n° 5225 A  
*Antonio Mezzalana*

RESPONSABILE INTEGRAZIONE PRESTAZIONI SPECIALISTICHE  
Ing. Emilio Sali  
Albo Ing. Reggio Emilia n° 945  
*Emilio Sali*

IL CONCESSIONARIO  
Autosole Regionale  
Cispadana S.p.A.  
L. FERRARESE  
G. GUADAGNINI  
*Guadagnini*

G									
F									
E									
D									
C									
B									
A	17.04.2012	EMISSIONE							

IDENTIFICAZIONE ELABORATO  
DATA: 17.04.2012  
DESCRIZIONE: EMISSIONE  
REDAZIONE: A. Fagnocchi  
CONTROLLI: G. Guadagnini, E. Sali  
APPROVAZIONE: G. Guadagnini

NUM. PROSP. 2/3/3/7  
FASC. 0  
LEVO 0  
ALTO 0  
CANTO STRADA 0  
DATA STIP. 0  
MONT. 0  
DPS. SOST. 0  
PROSP. 0  
MIS. 0  
MAGGIO 2012  
SCALA 1:100