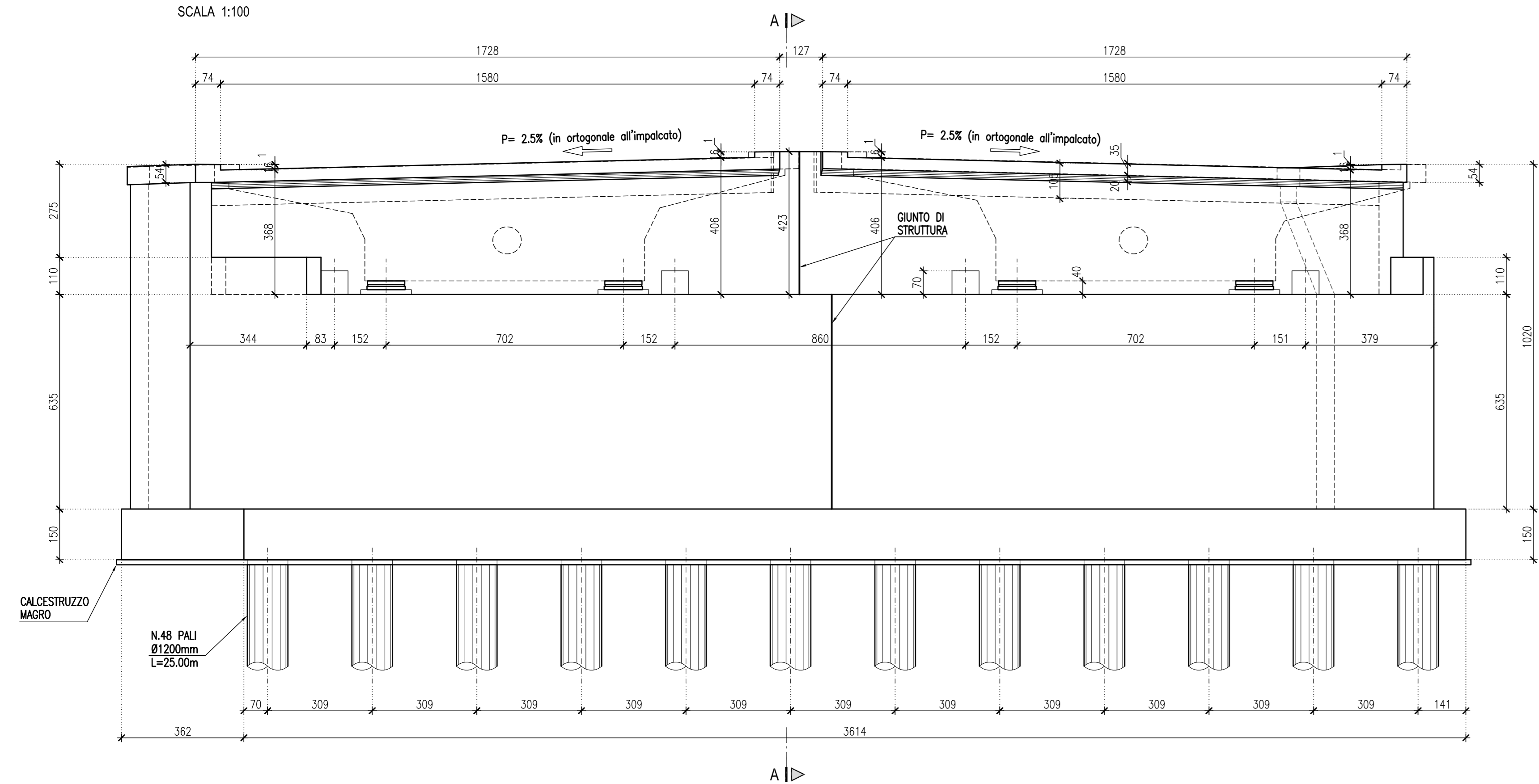


VISTA FRONTALE

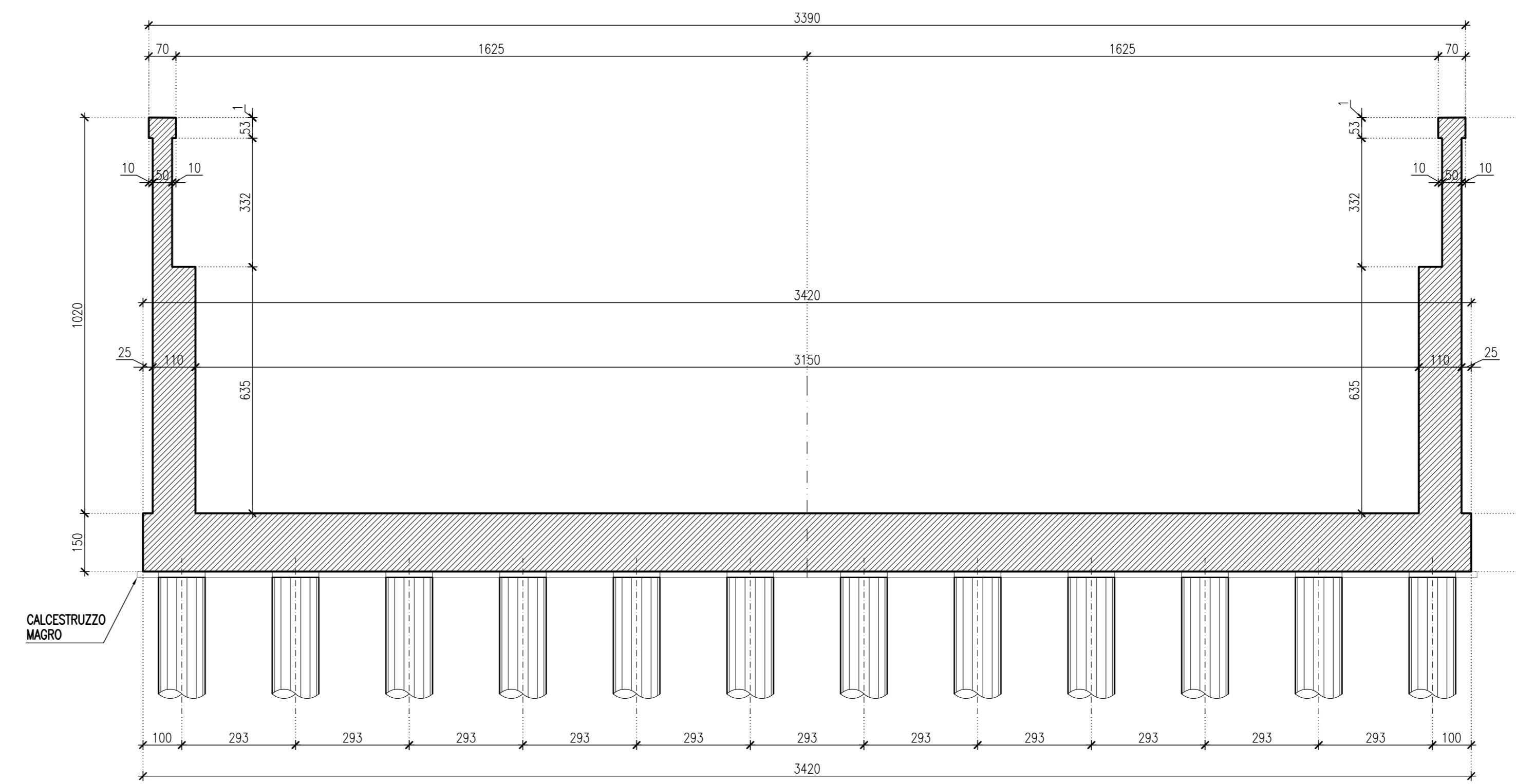
SCALA 1:100



NOTA: BENE L'IMPRONTA DELLE TRAVI INDICATA IN LINEA TRATTEGGIATA È REFERITA ALLA SEZIONE IN ASSE APPOGGI

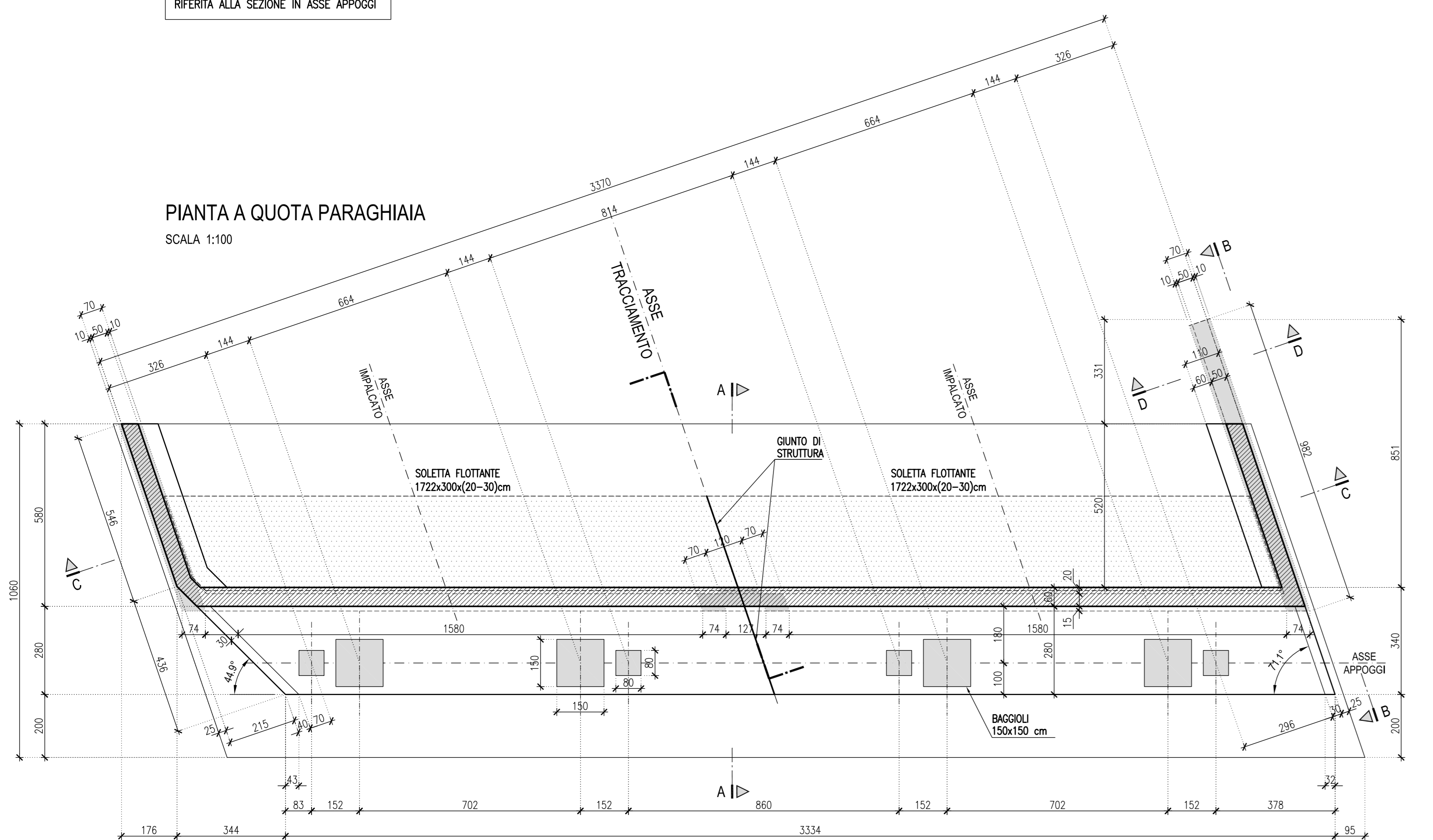
SEZIONE C-C

(sezione falsata in ortogonale all'asse di tracciamento)
SCALA 1:100



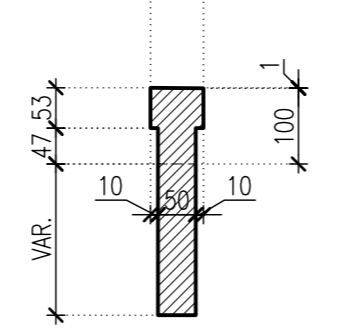
PIANTA A QUOTA PARAGHIAIA

SCALA 1:100



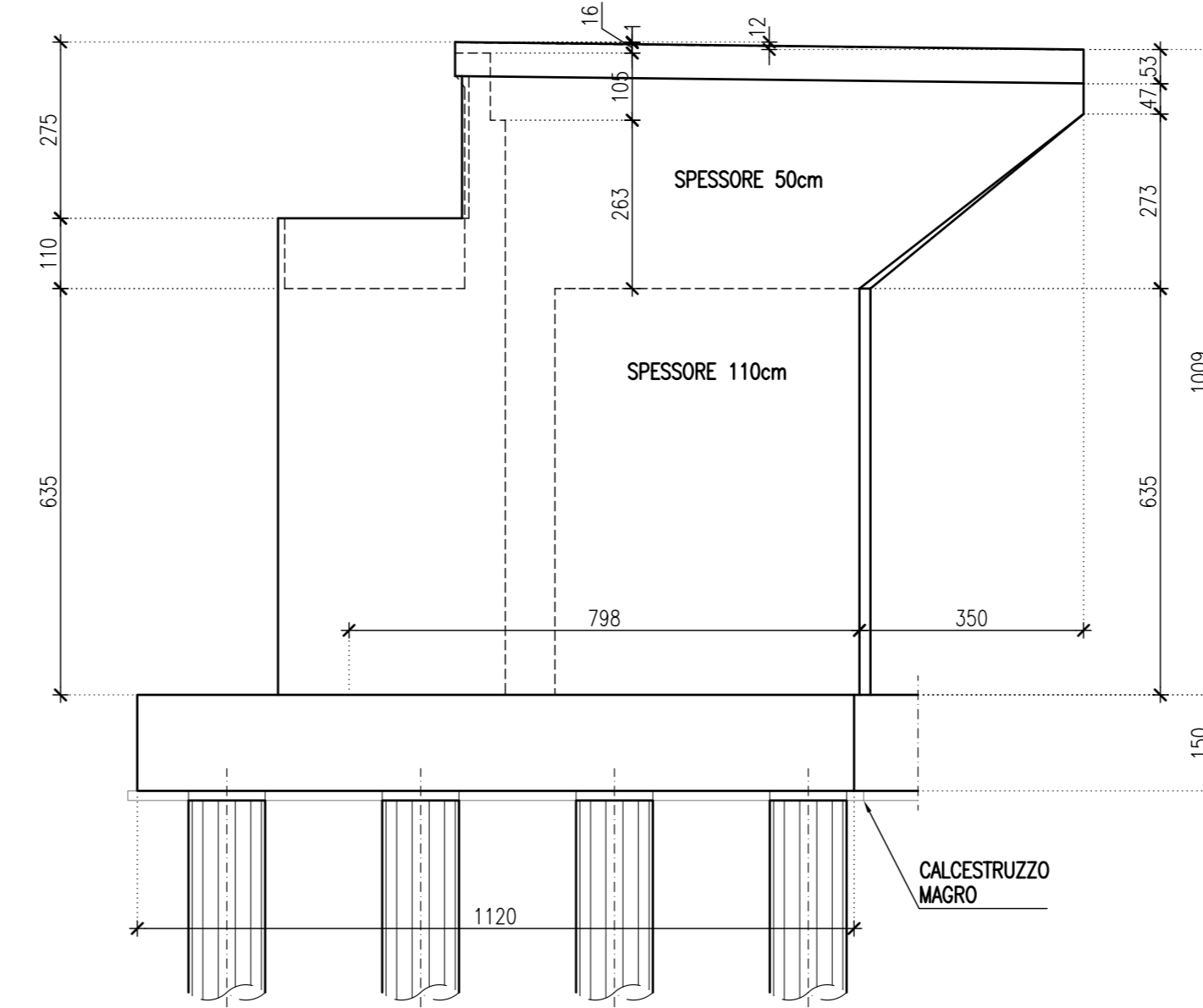
SEZIONE D-D

SCALA 1:100



VISTA B-B

SCALA 1:100



SEZIONE A-A

SCALA 1:100

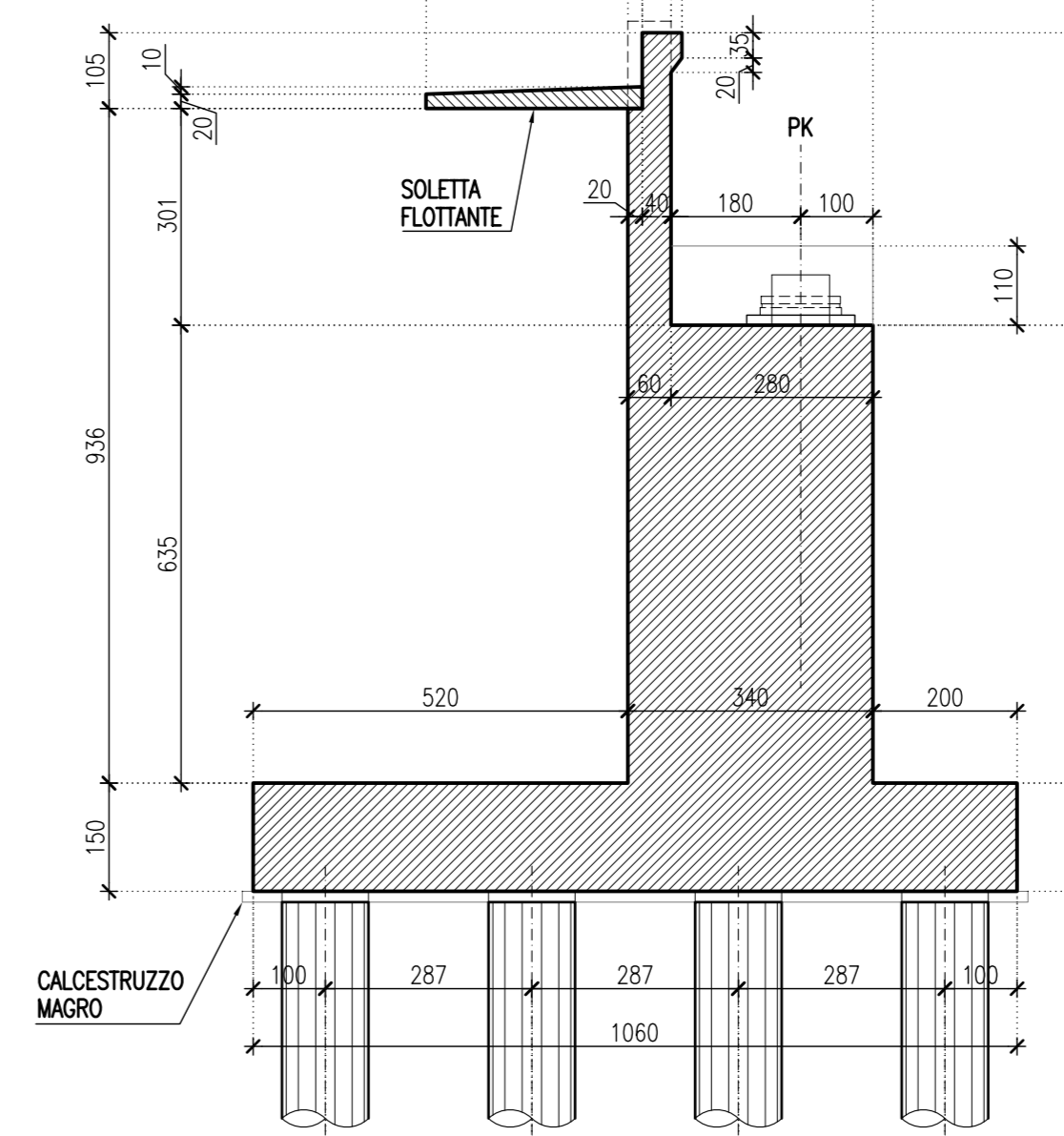
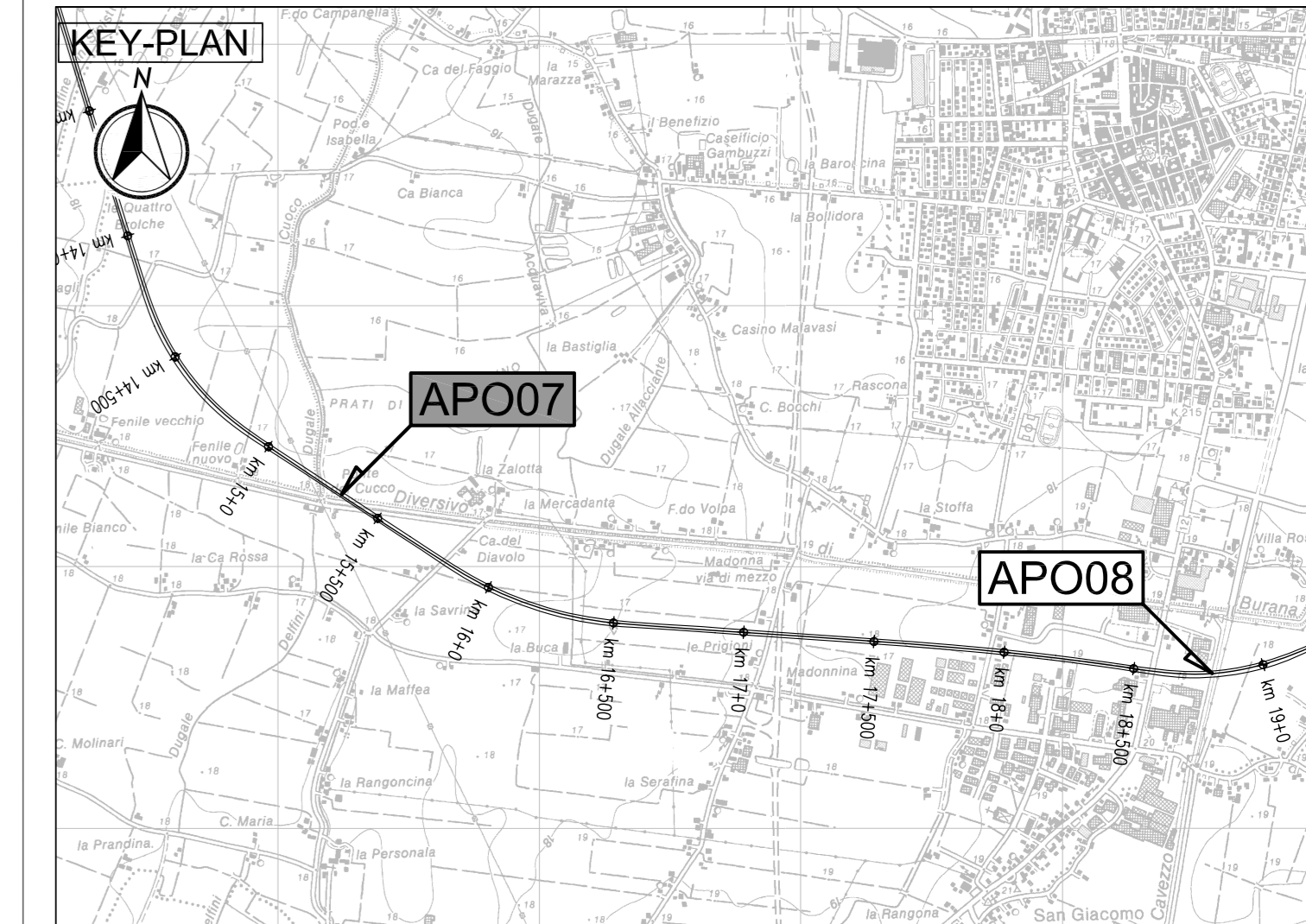
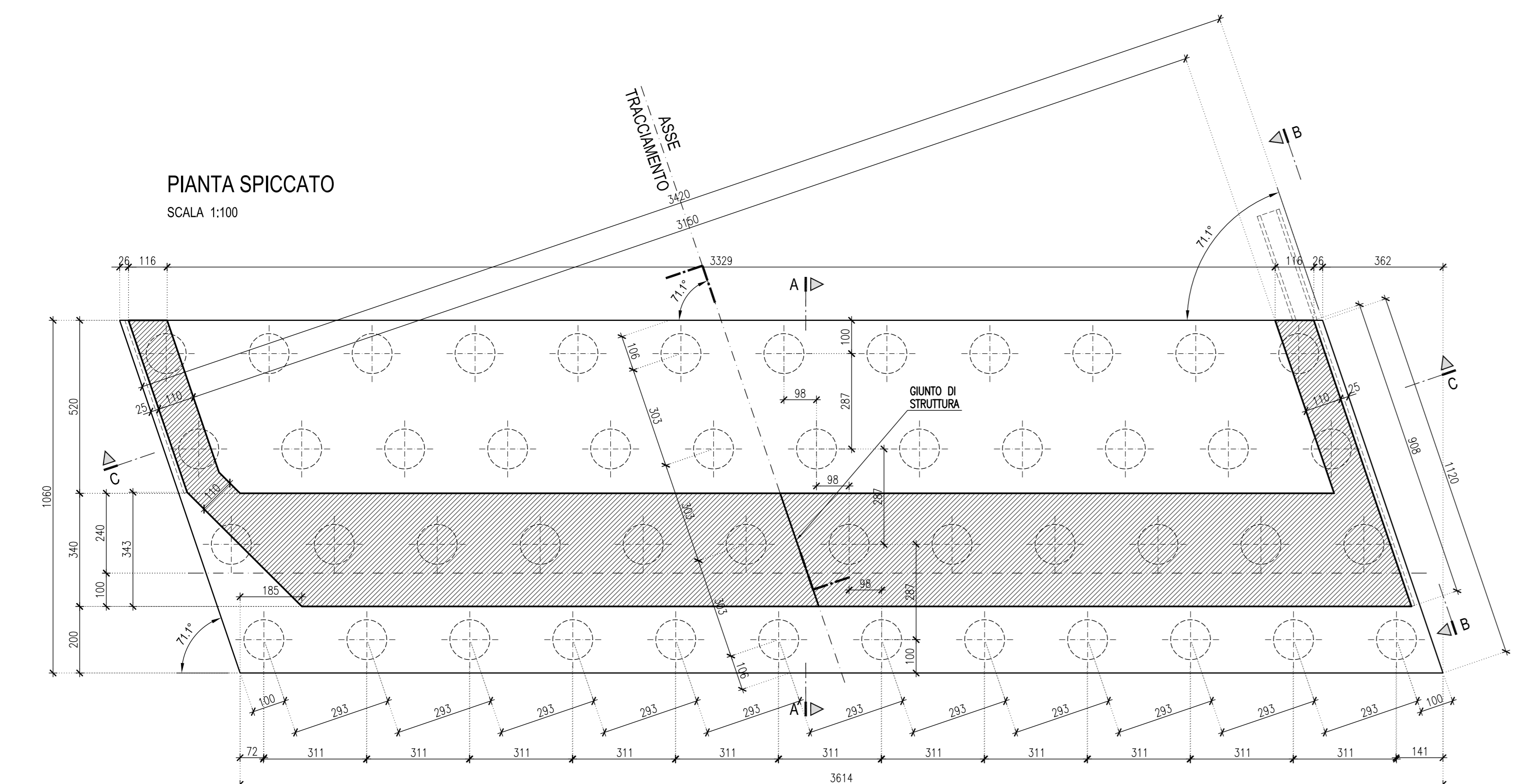


Table with 2 columns: SPALLA (Shoulder) and PK (Stationing).
SPALLA -A- 15+369,67
SPALLA -B- 15+483,67

PIANTA SPICCATO

SCALA 1:100



LEGENDA

ELABORATI DI RIFERIMENTO

- PD\_0\_A16\_APO07\_0\_OM\_PP\_01 "Planimetria d'Inquadramento e Prospetti"

CARATTERISTICHE DEI MATERIALI

- PD\_0\_0000\_0000\_0\_GE\_TB\_01 "Tabella dei materiali e classi di esposizione calcestruzzo"

NOTE

- Dimensioni espresse in cm.
- Quote altimetriche espresse in m.
- Angoli espressi in gradi sessagesimali

Project information block including logos for Regione Emilia-Romagna and ARC, project title 'AUTOSTRADA REGIONALE CISPADANA', and details about the design team and stakeholders.

Revision and identification table with columns for revision number, date, description, and approval status. Includes a scale of 1:100 and the date MAGGIO 2012.