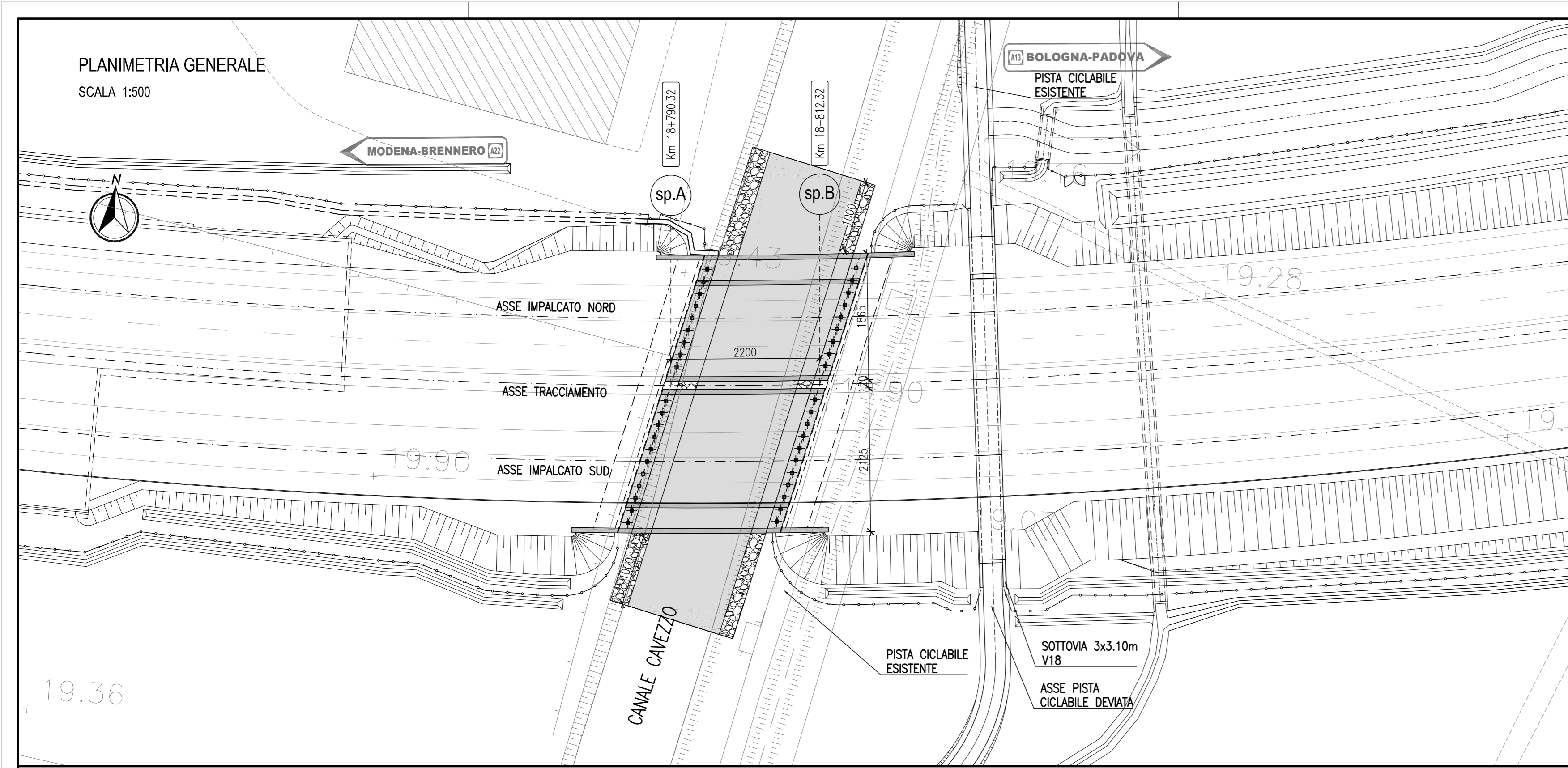
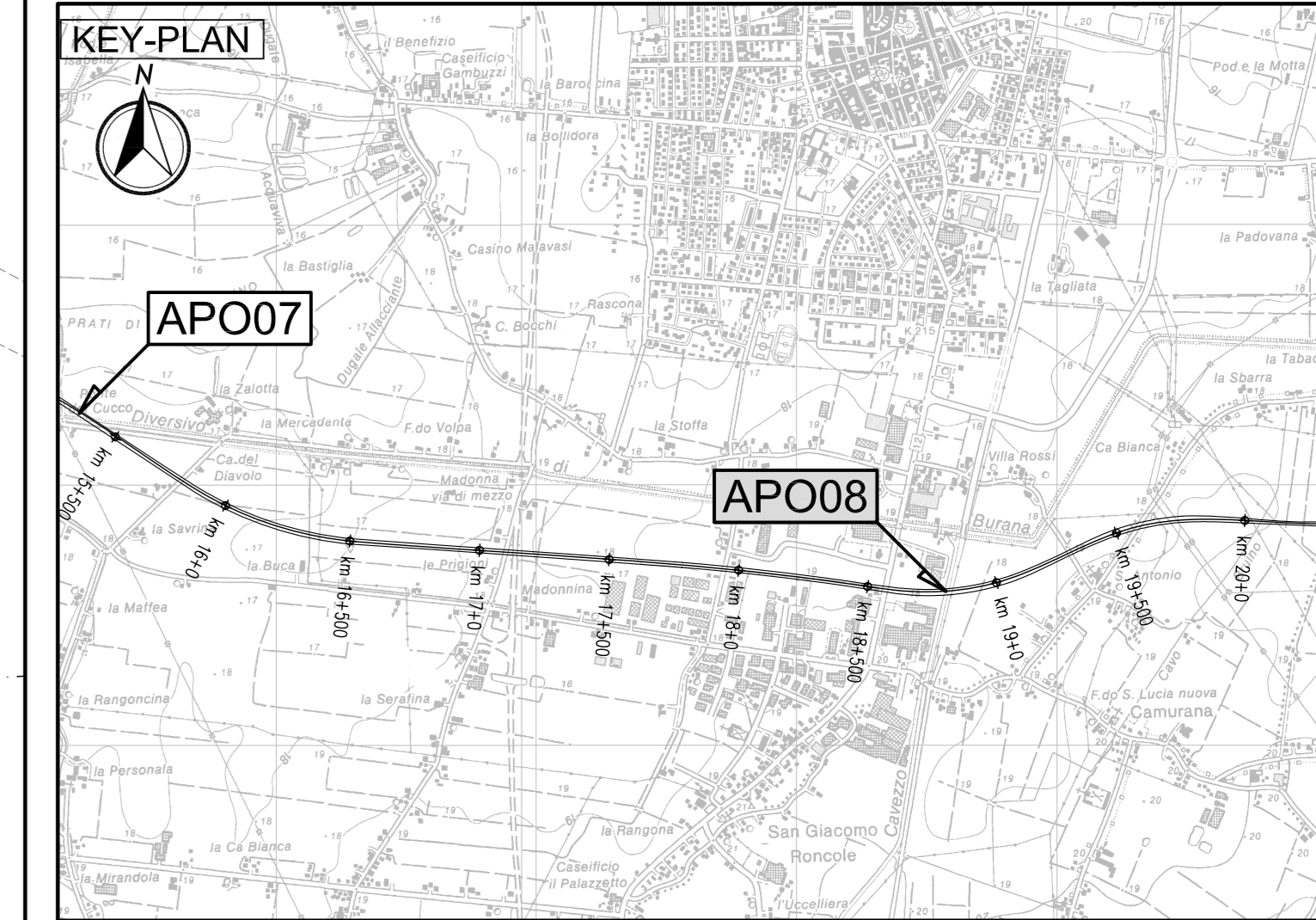
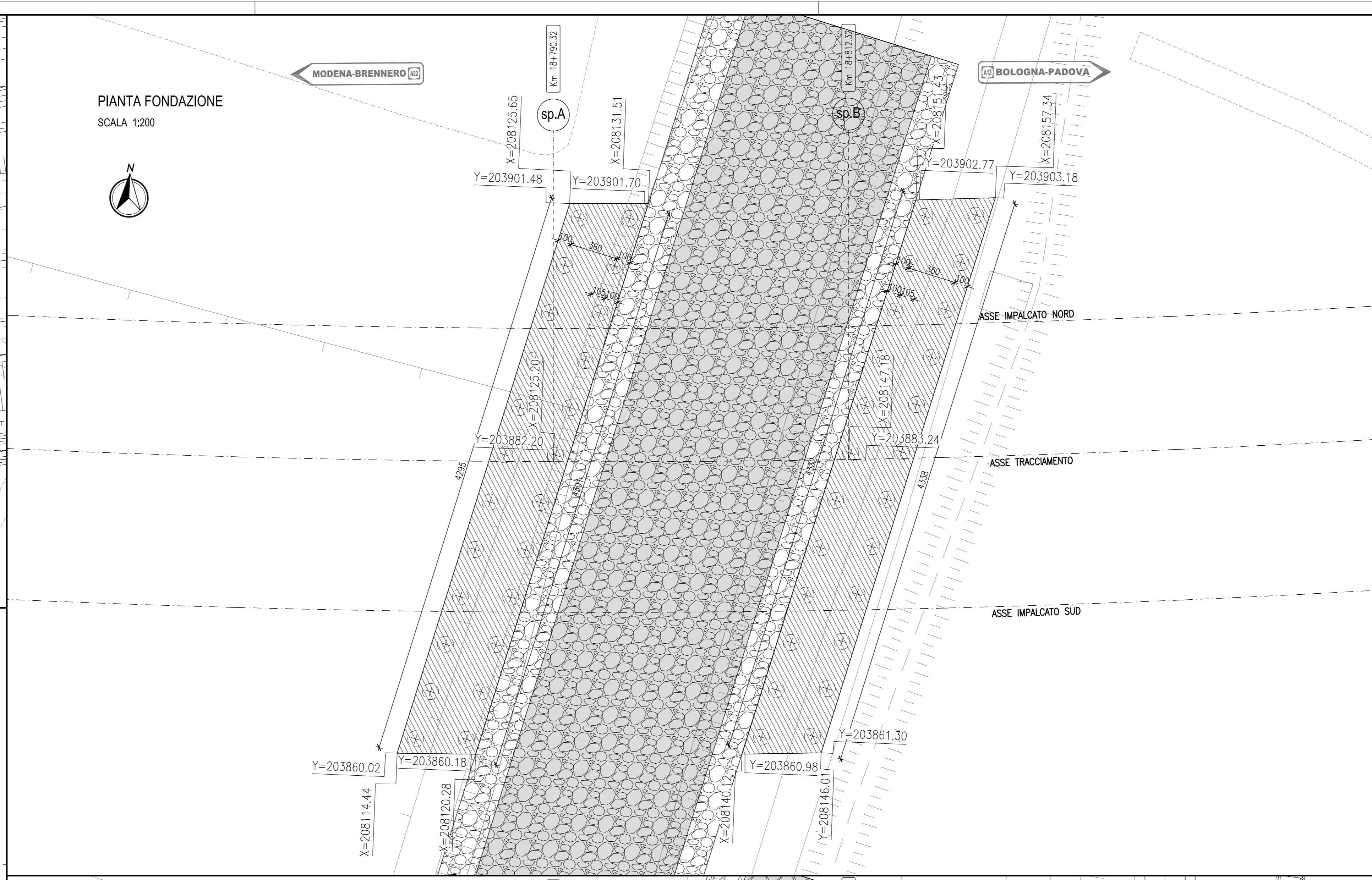


PLANIMETRIA GENERALE  
SCALA 1:500



PIANTA FONDAZIONE  
SCALA 1:200



LEGENDA

Legend area for the project, detailing the symbols and colors used in the drawings to represent different elements and materials.

ELABORATI DI RIFERIMENTO

- PD\_0\_A00\_A0000\_0\_OM\_TP\_03 - Ponti e viadotti in C.A.P. sull'asse principale con o senza barriere antirumore: Sezioni tipo, modalità di adeguamento alla 3a corsia e dettagli (Tav. 1/2)
- PD\_0\_A00\_A0000\_0\_OM\_TP\_04 - Ponti e viadotti in C.A.P. sull'asse principale con o senza barriere antirumore: Sezioni tipo, modalità di adeguamento alla 3a corsia e dettagli (Tav. 2/2)
- PD\_0\_A00\_A0000\_0\_OM\_TP\_05 - Ponti e viadotti in C.A.P. sull'asse principale: Fasi costruttive Impalcato
- PD\_0\_A18\_APO08\_0\_OM\_RC\_01 - Relazione di calcolo

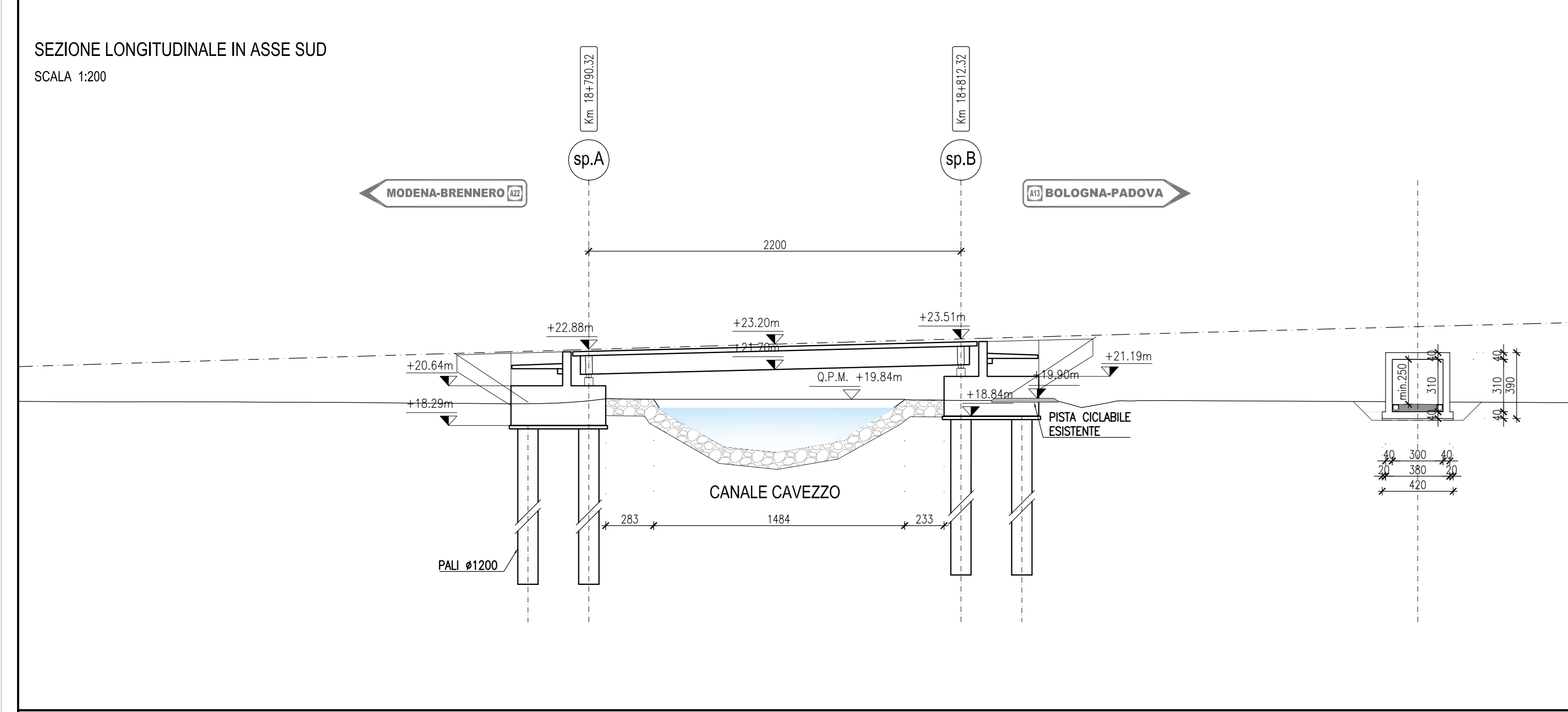
CARATTERISTICHE DEI MATERIALI

- PD\_0\_0000\_0000\_0\_GE\_TB\_01: "Tabella materiali e classi di esposizione calcestruzzo"

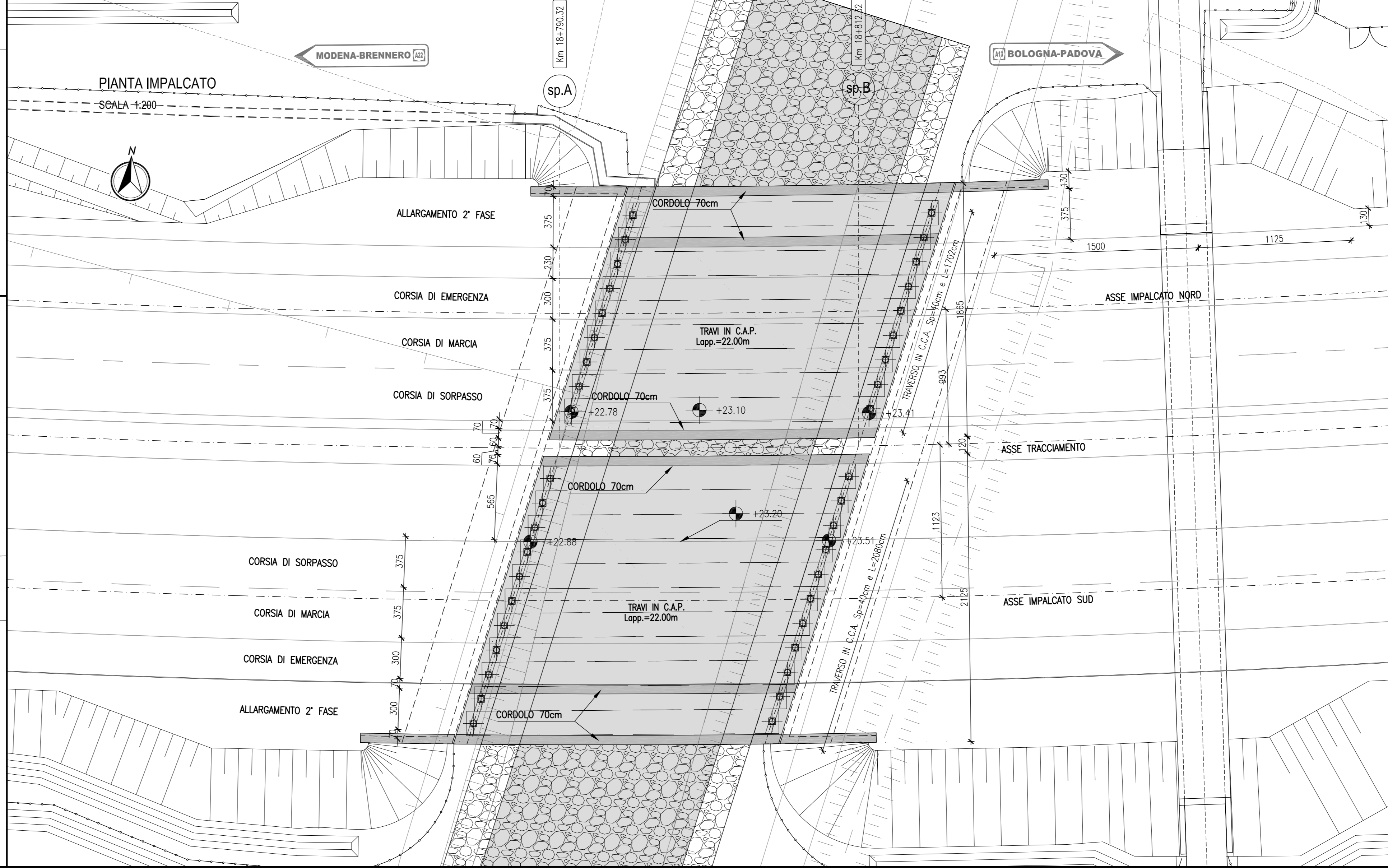
NOTE

Quote espresse in cm.  
Quote altimetriche espresse in m.  
Angoli espressi in gradi sessagesimali

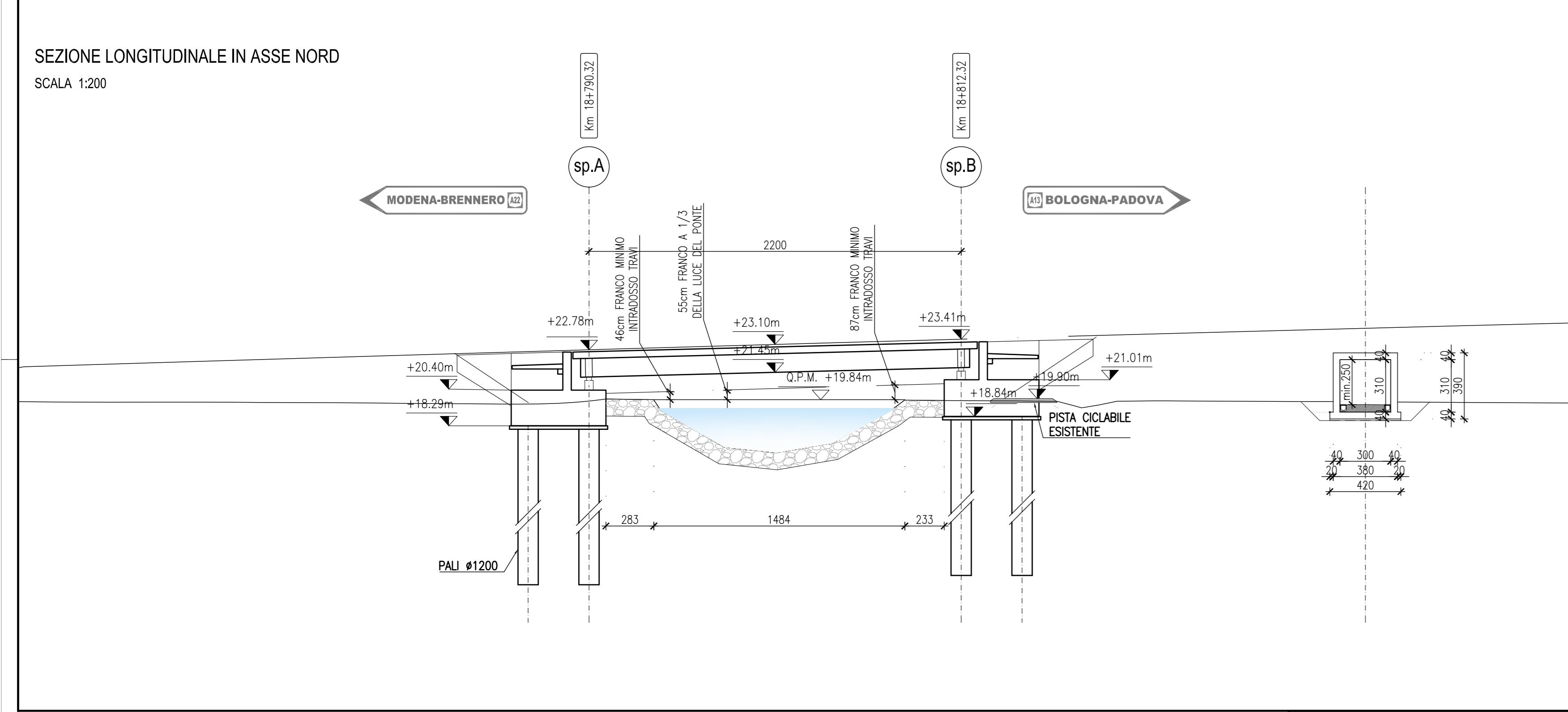
SEZIONE LONGITUDINALE IN ASSE SUD  
SCALA 1:200



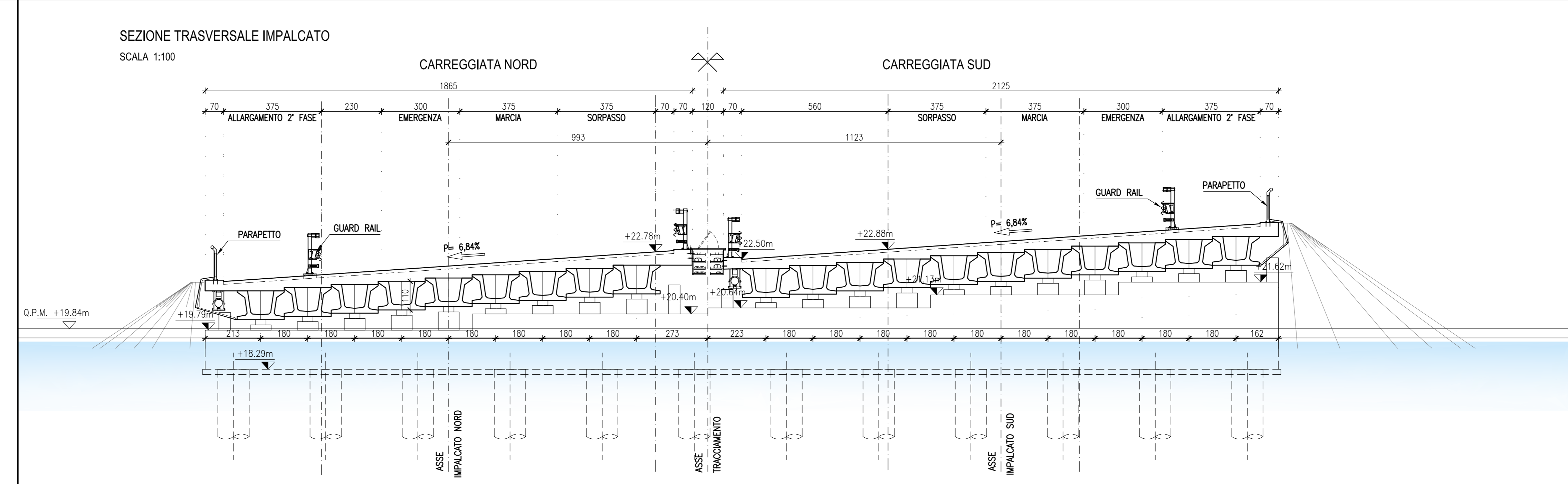
PIANTA IMPALCATO  
SCALA 1:200



SEZIONE LONGITUDINALE IN ASSE NORD  
SCALA 1:200



SEZIONE TRASVERSALE IMPALCATO  
SCALA 1:100



Project identification block including the name of the concessionaire (Autosstrada Regionale Cispadana), the project name (Autosstrada Regionale Cispadana dal Casello di Reggio-Rolo sulla A22 al Casello di Ferrara Sud sulla A13), and the project phase (Progetto Definitivo).

Professional responsibility block including the names and signatures of the project manager, technical director, and other key personnel, along with their respective roles and the date of the document.

Table with columns for revision history, including fields for date, description, and author. It includes a table for the revision history and a table for the identification of the elaboration.