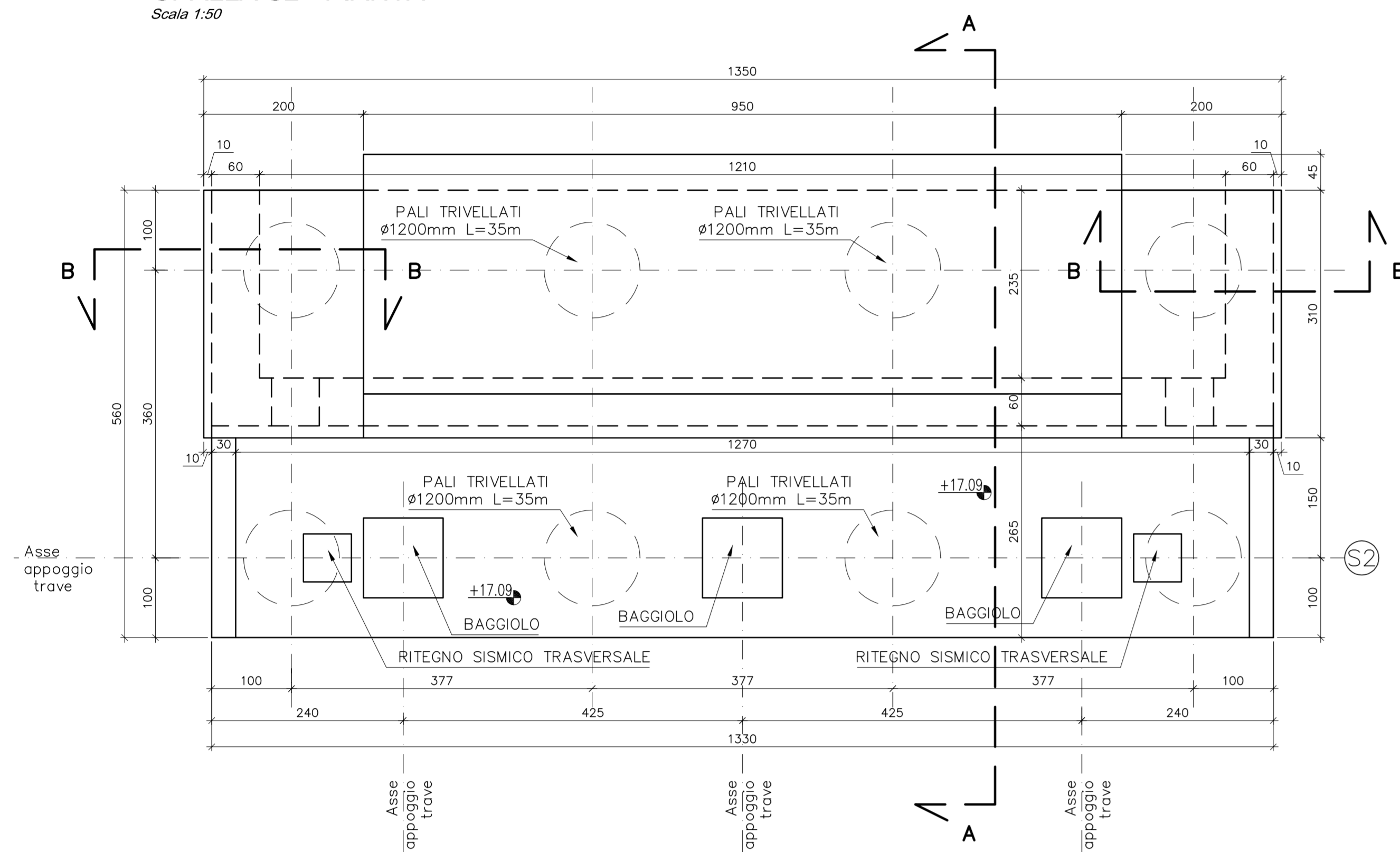
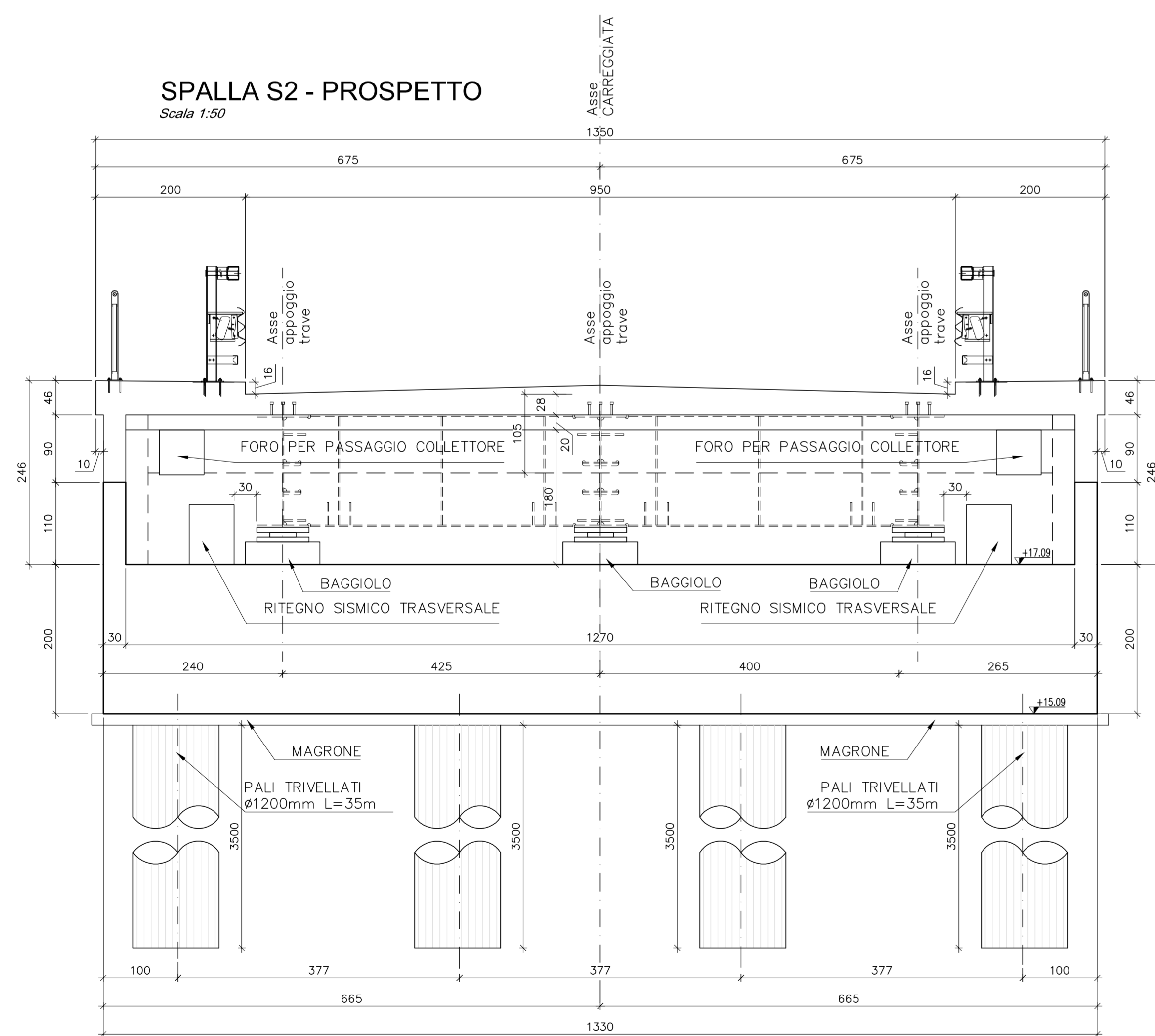


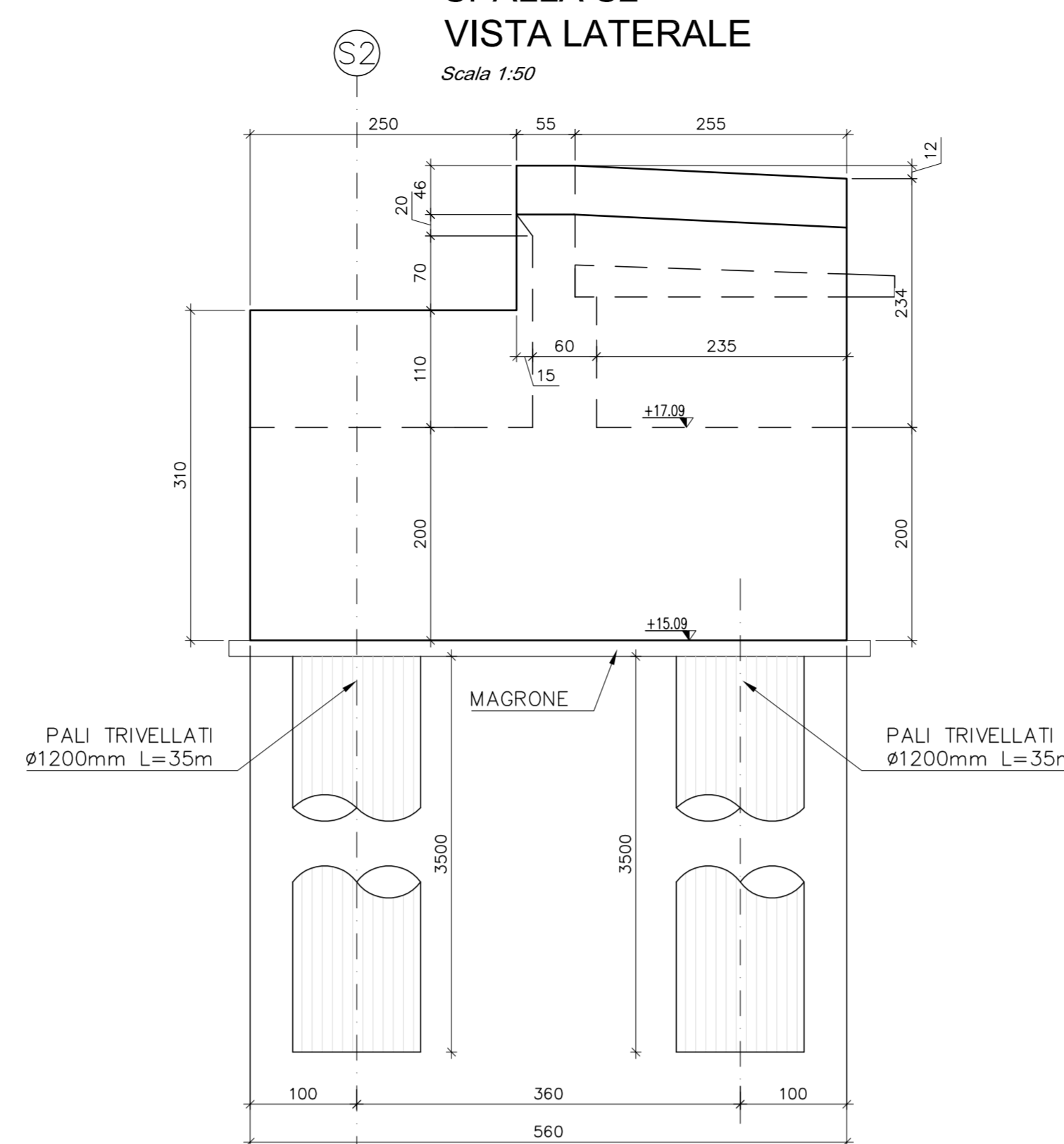
SPALLA S2 - PIANTA
Scala 1:50



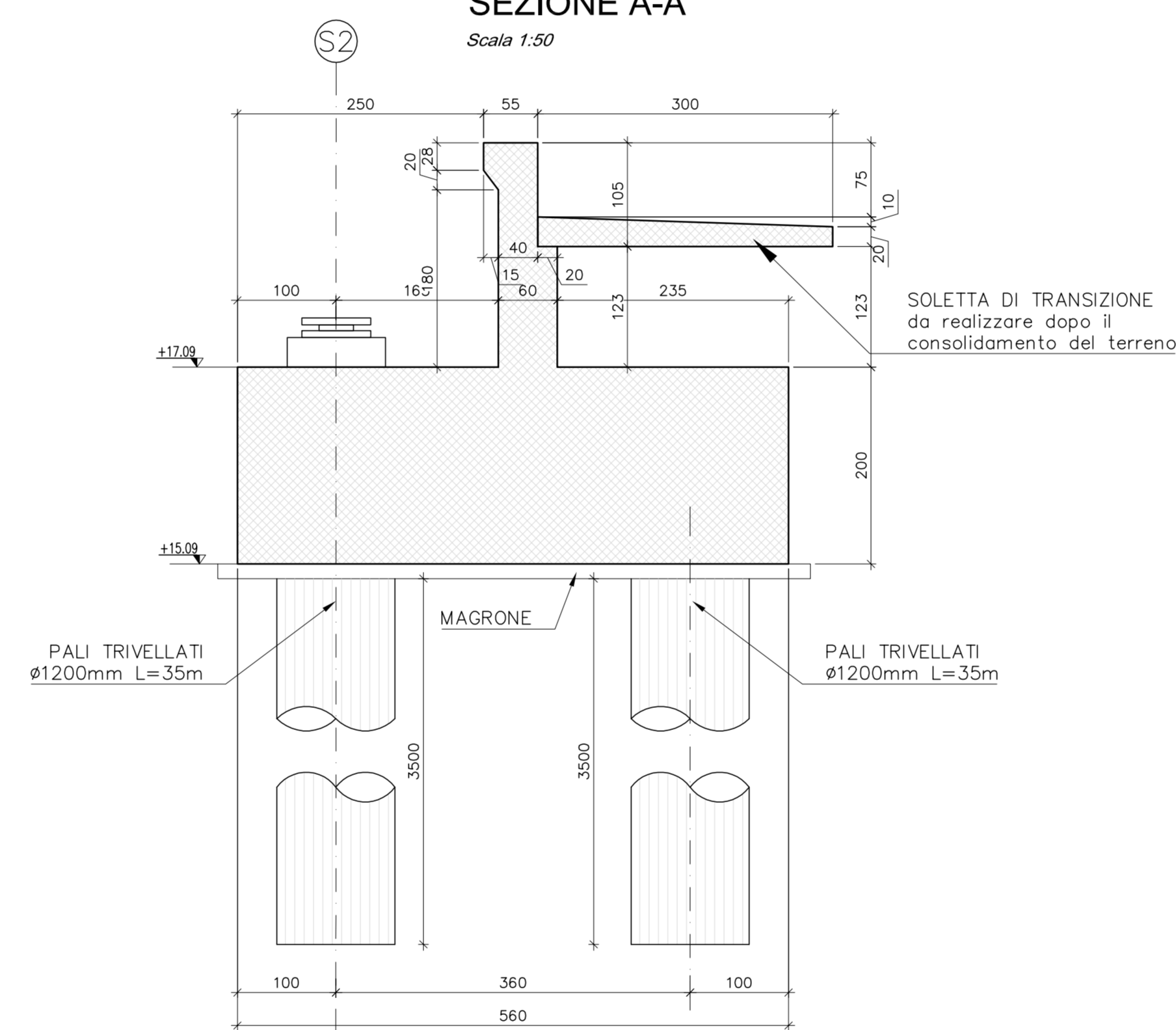
SPALLA S2 - PROSPETTO
Scala 1:50



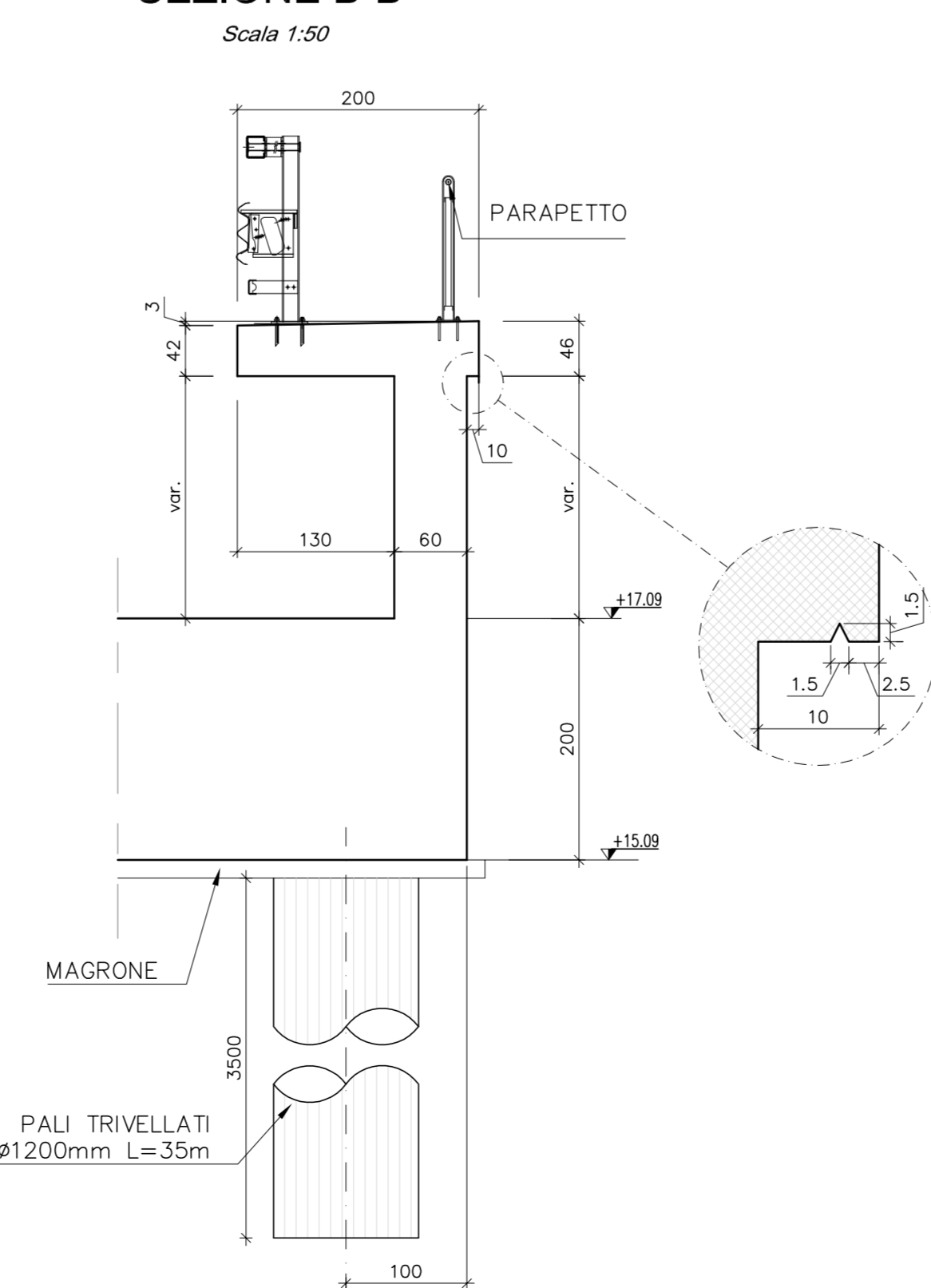
SPALLA S2 VISTA LATERALE
Scala 1:50



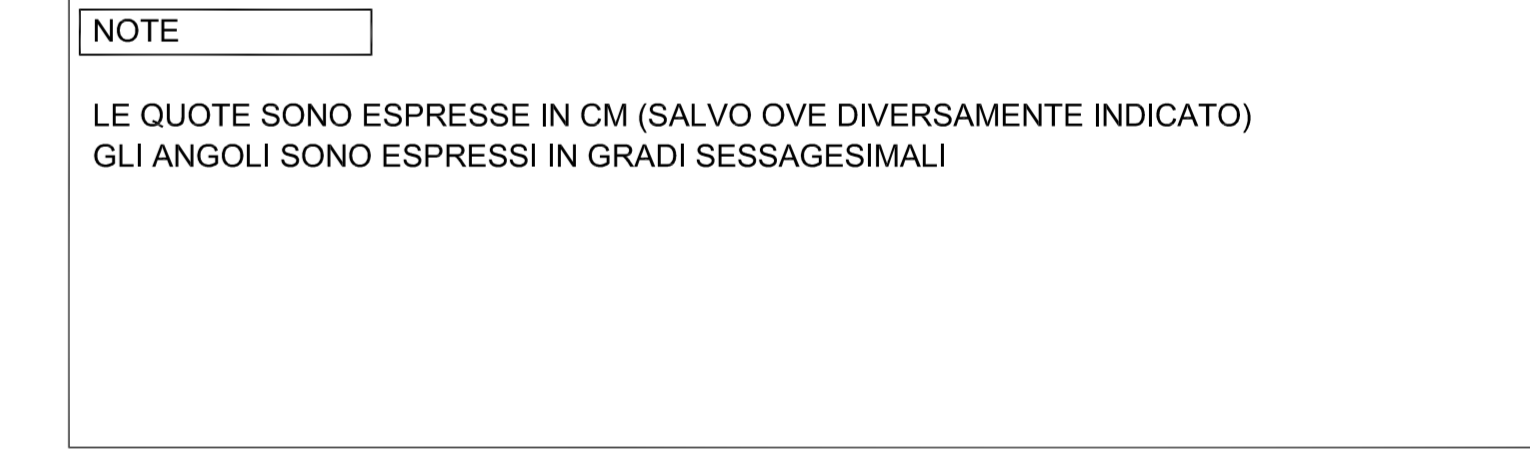
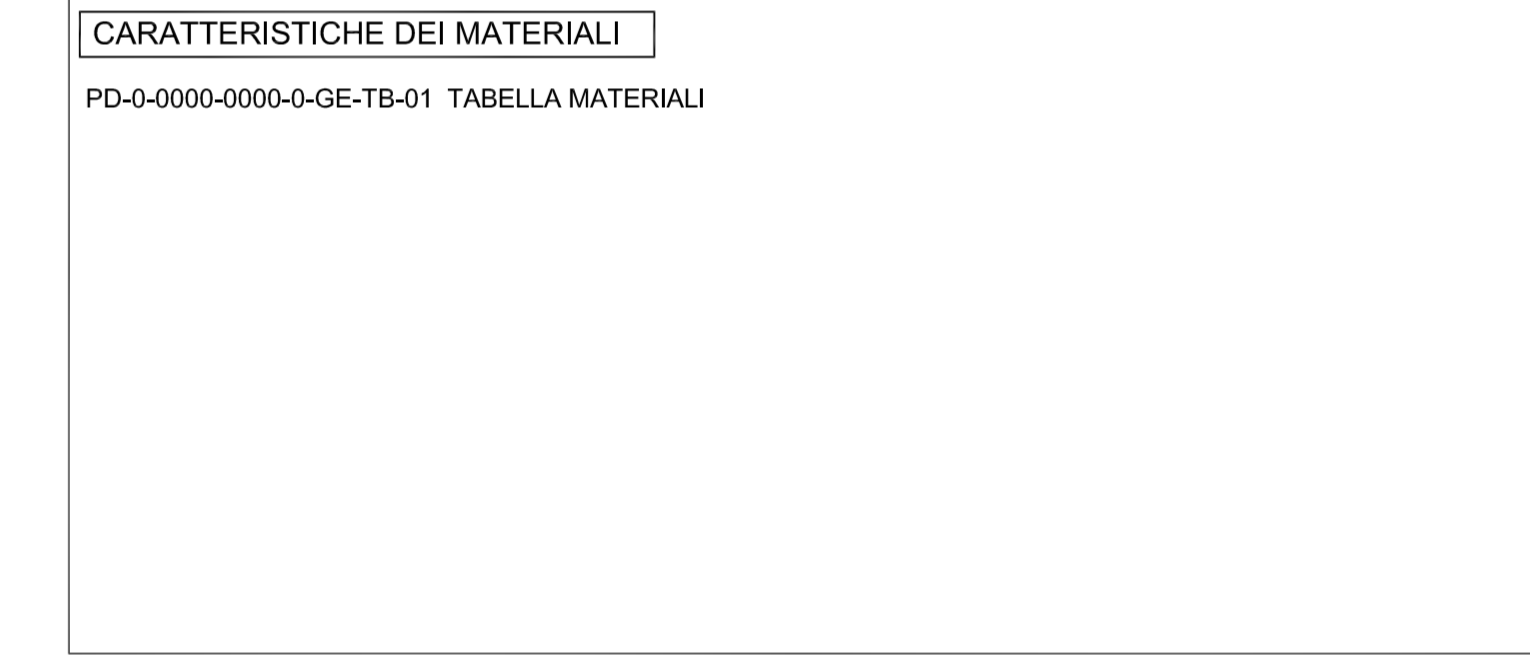
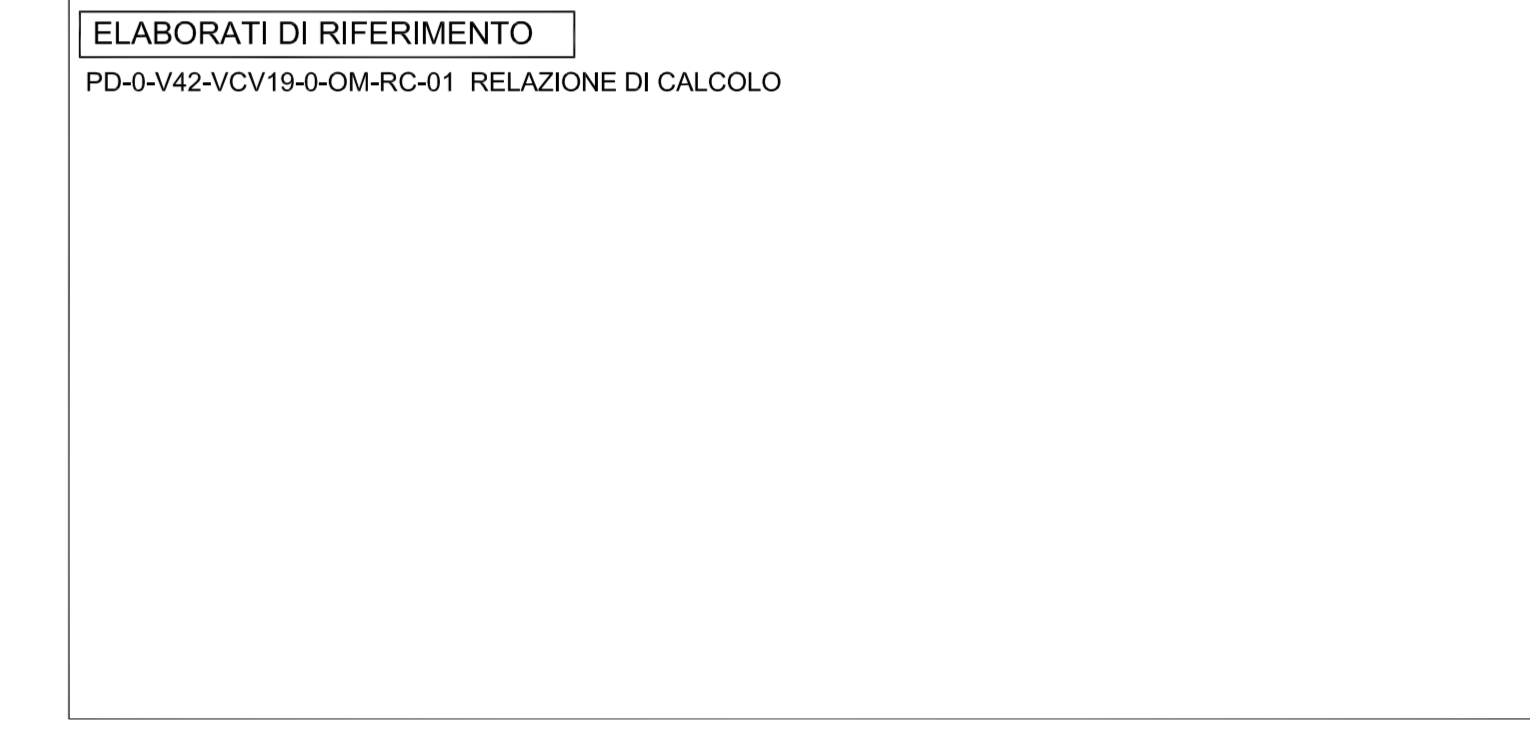
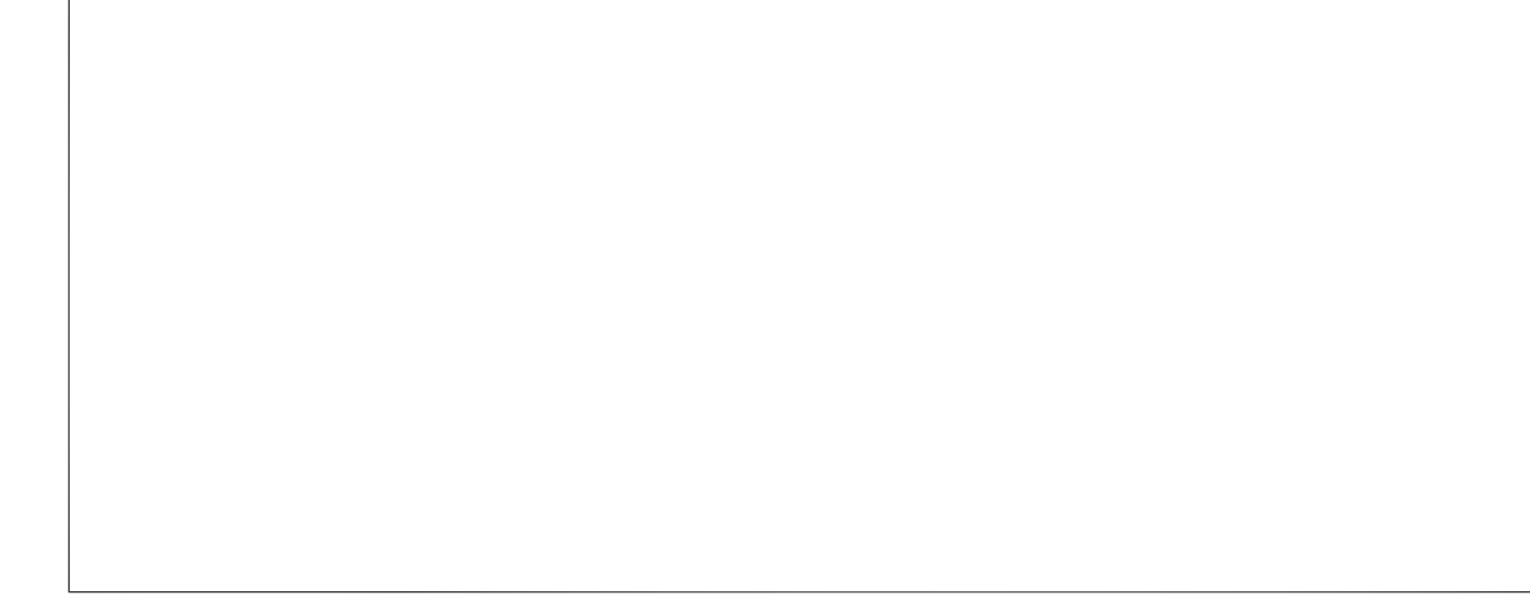
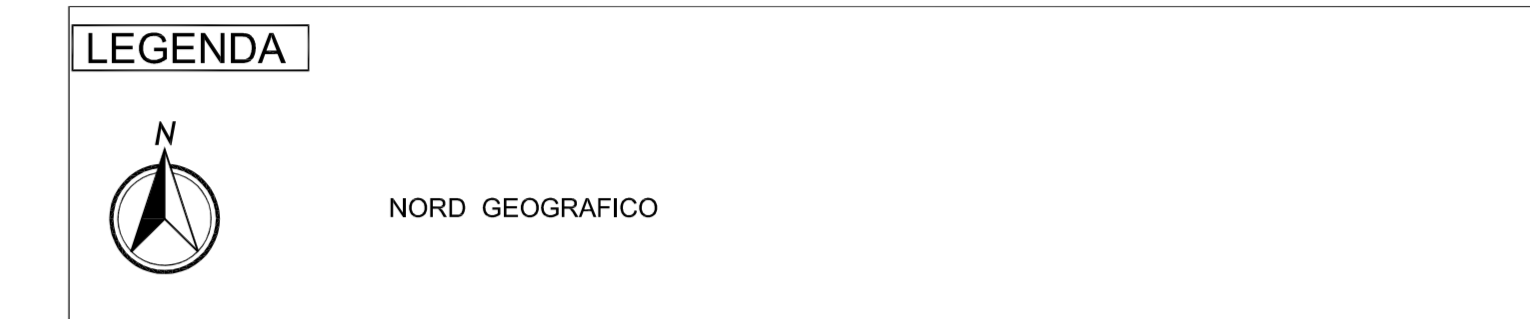
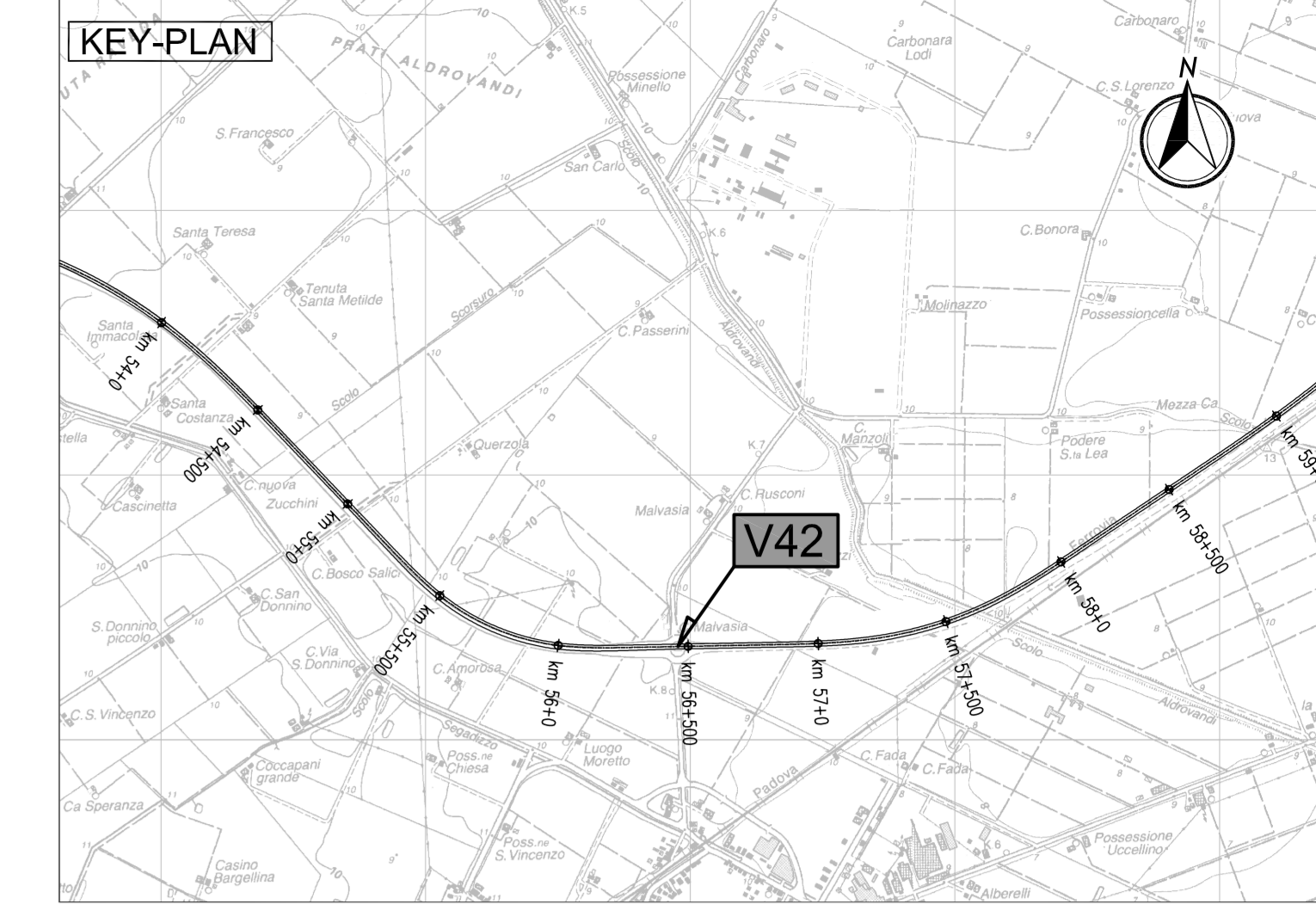
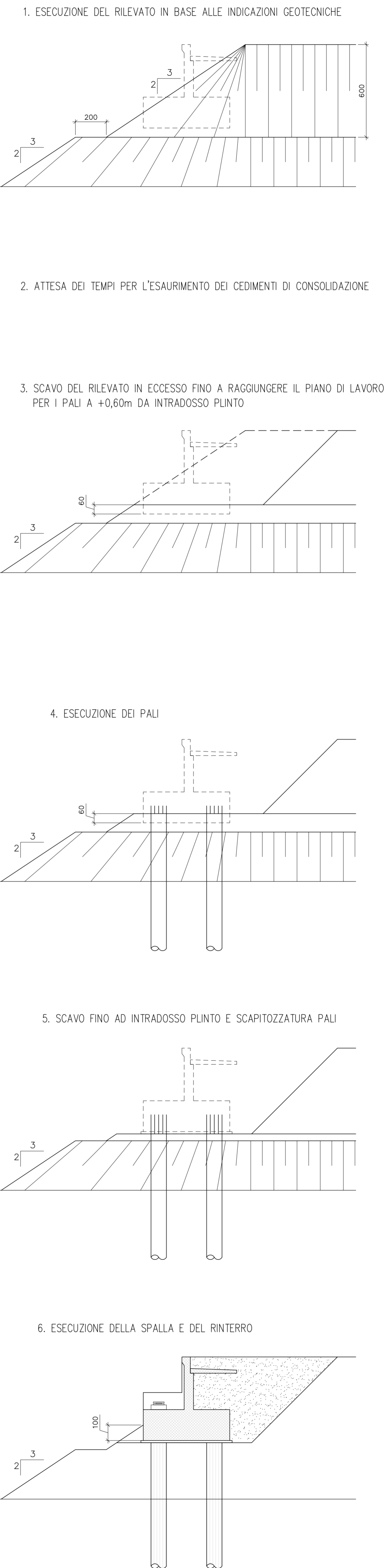
SPALLA S2 SEZIONE A-A
Scala 1:50



SPALLA S2 SEZIONE B-B
Scala 1:50



FASI ESECUTIVE SPALLA
Scala 1:50



IL CONCEDENTE: Regione Emilia-Romagna

IL CONCESSIONARIO: ARCA AUTOSTRADA REGIONALE CISPADANA

AUTOSTRADA REGIONALE CISPADANA DAL CASELLO DI REGGIOLO-ROLO SULLA A22 AL CASELLO DI FERRARA SUD SULLA A13

CODICE C.U.P. E8180800000009

PROGETTO DEFINITIVO

ASSE AUTOSTRADALE (COMPRESIVO DEGLI INTERVENTI LOCALI DI COLLEGAMENTO VIARIO AL SISTEMA AUTOSTRADALE) OPERE STRUTTURALI

OPERE D'ARTE MAGGIORI - CAVALCAVIA VIABILITA' INTERFERITE

VCV19 - CAVALCAVIA SP 50 VIGARANO MAINARDA

CARPENTERIA SPALLA S2

IL PROGETTISTA: Ing. Antonio De Fazio
Albo Ing. Bologna n° 3696

RESPONSABILE INTEGRAZIONE PRESTAZIONI SPECIALISTICHE: Ing. Emilio Salvi
Albo Ing. Reggio Emilia n° 945

IL CONCESSIONARIO: Autorità Regionale Caspade S.p.A. L. PRESIDENTE: Giovanni Pizzari

G					
F					
E					
D					
C					
B					
A	17/04/2012	EMISSIONE	GADOTTI	DE FAZIO	SALVI

IDENTIFICAZIONE ELABORATO: DATA: DESCRIZIONE: MEDIANE: APPROVAZIONE: DATA: MAGGIO 2012

SCALE: 1:50