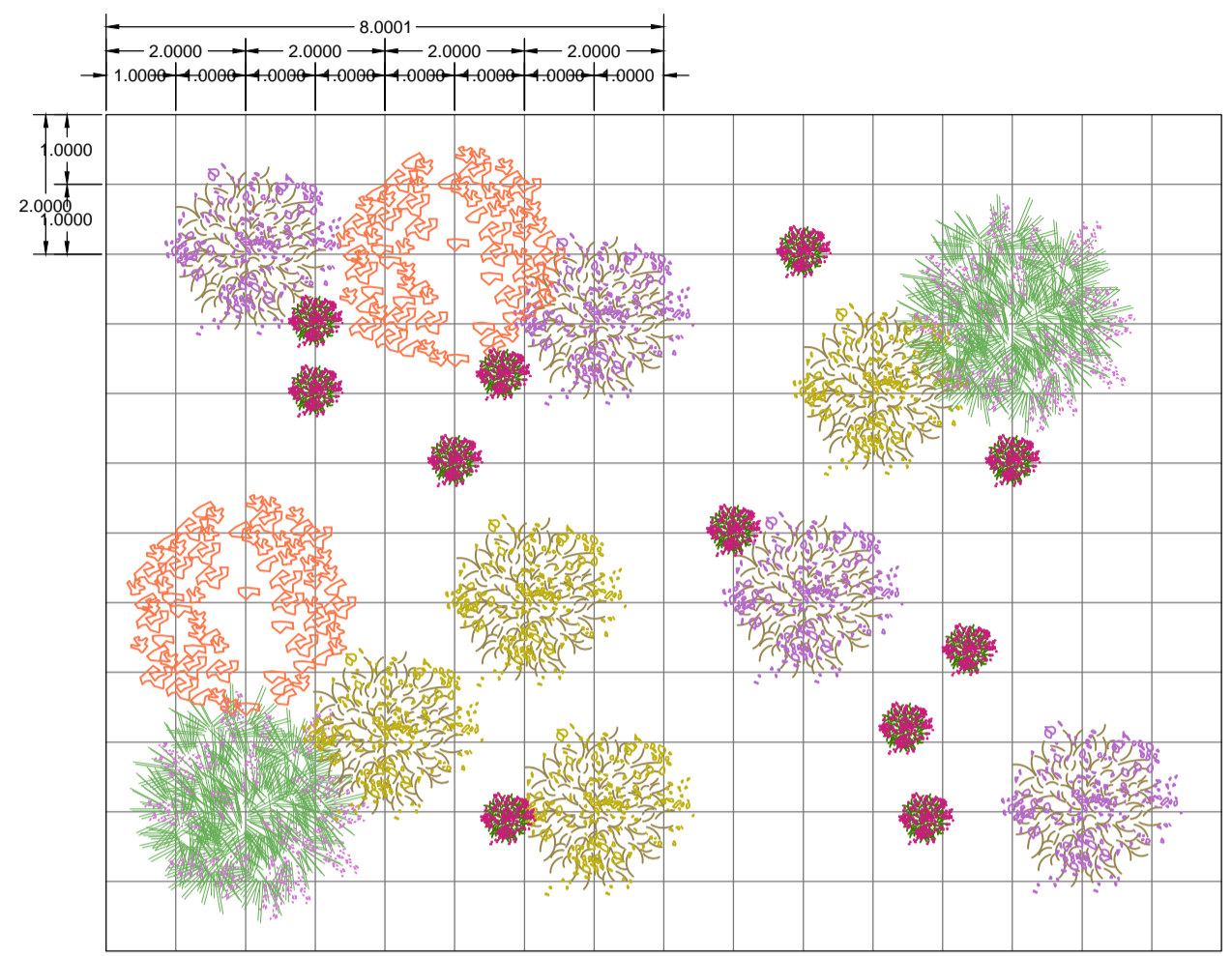
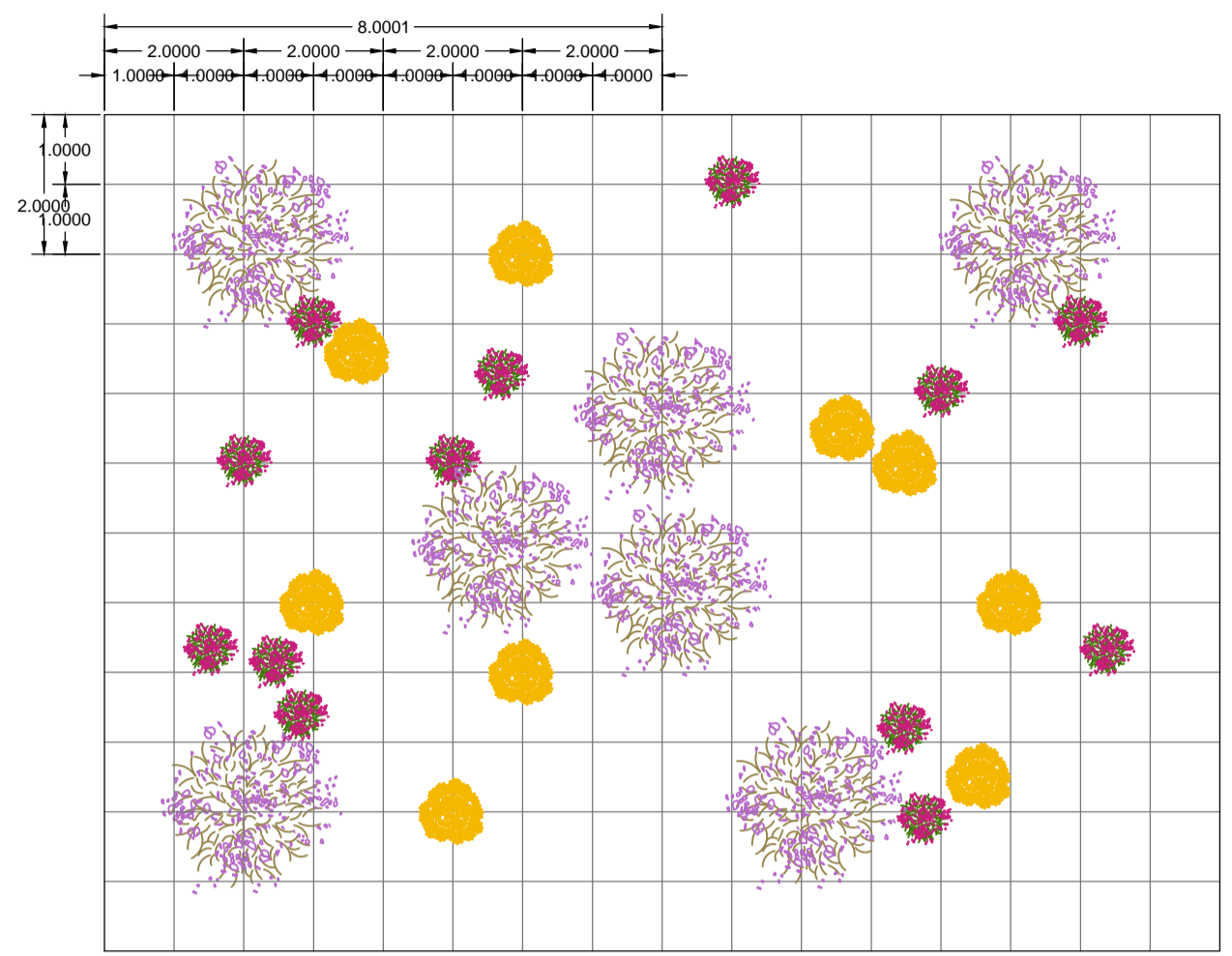


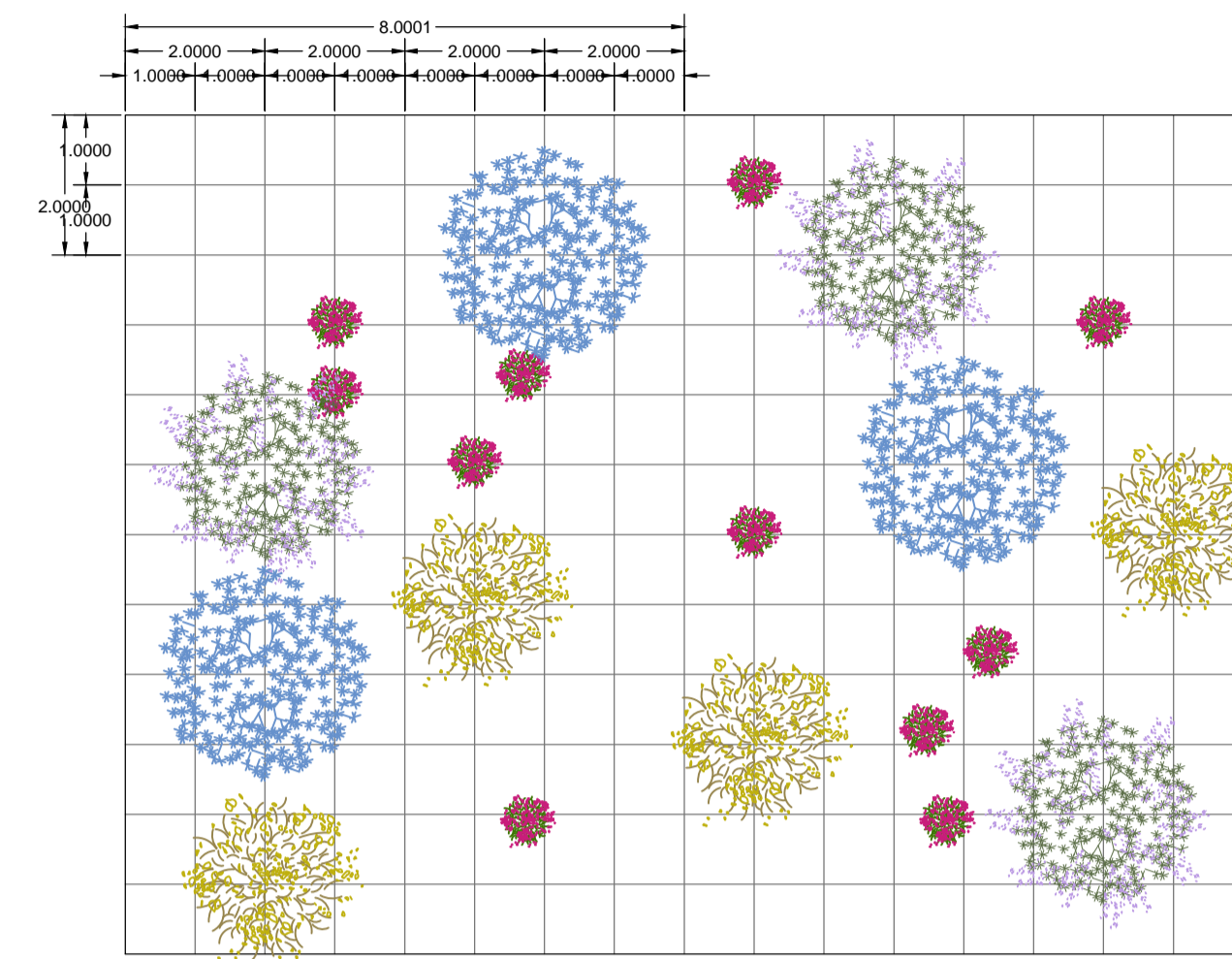
**SISTEMAZIONE ARBUSTIVA DEGLI IMBOCCHI GALLERIA**  
 Ginepro rosso (*Juniperus oxycedrus*), Ginestra odorosa (*Spartium junceum* L.), Limoniastro cespuglioso (*Limoniastrum monopetalum*), Erica arborea (*Erica arborea*), Cisto rosso (*Cistus incanus*)



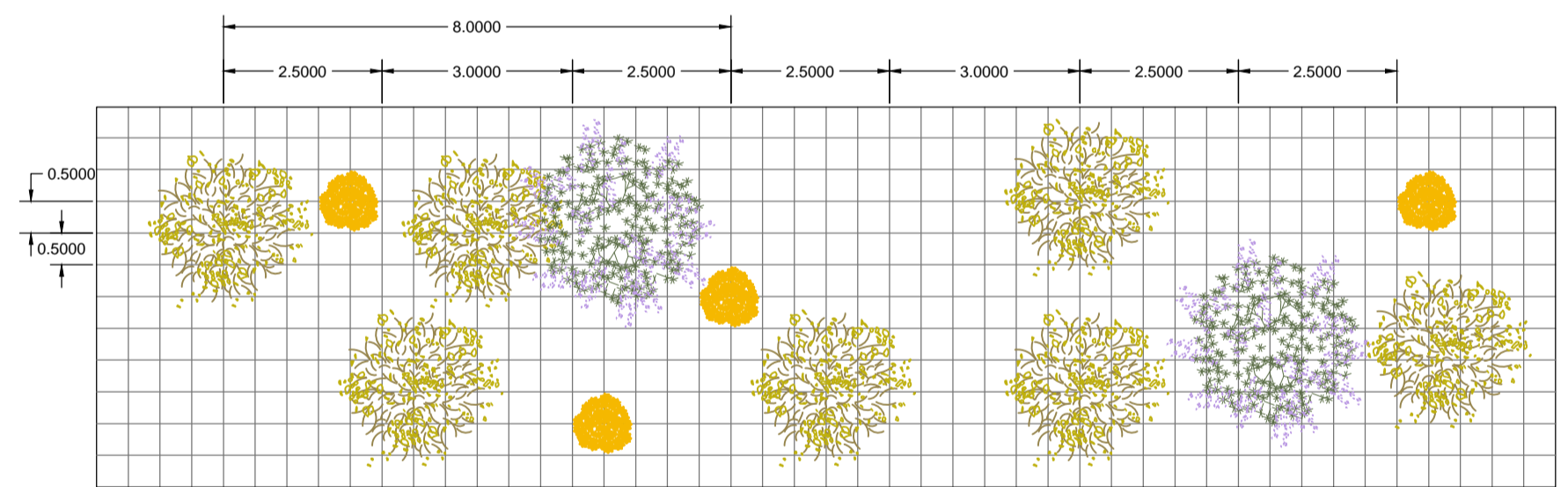
**RIPRISTINO DELLE AREE DI CANTIERE**  
 Limoniastro cespuglioso (*Limoniastrum monopetalum*), Euforbia arborea (*Euphorbia dendroides*), Cisto rosso (*Cistus incanus*)



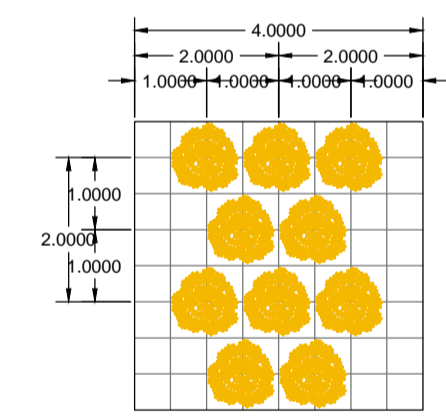
**SISTEMAZIONE ARBUSTIVA DELLA GALLERIA ARTIFICIALE**  
 Rosmarino (*Rosmarinus officinalis*), Mirto (*Myrtus communis*), Ginestra odorosa (*Spartium junceum* L.), Cisto rosso (*Cistus incanus*)



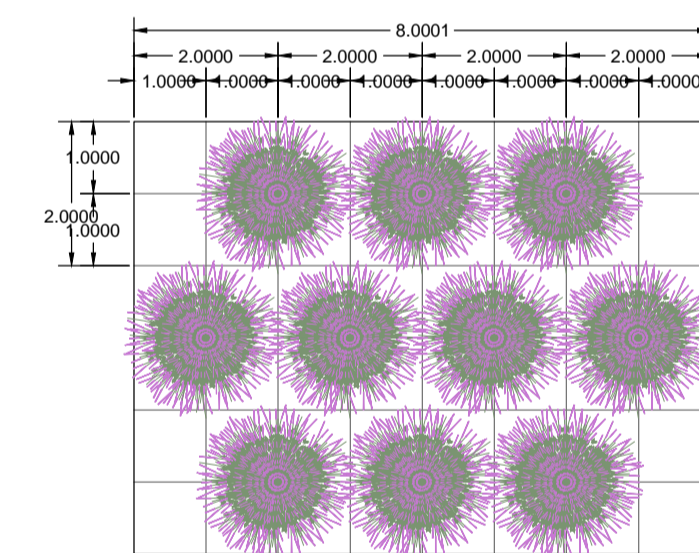
**RINATURALIZZAZIONE DEI TRATTI DISMESSI**  
 Rosmarino (*Rosmarinus officinalis*), Ginestra odorosa (*Spartium junceum* L.), Euforbia arborea (*Euphorbia dendroides*)



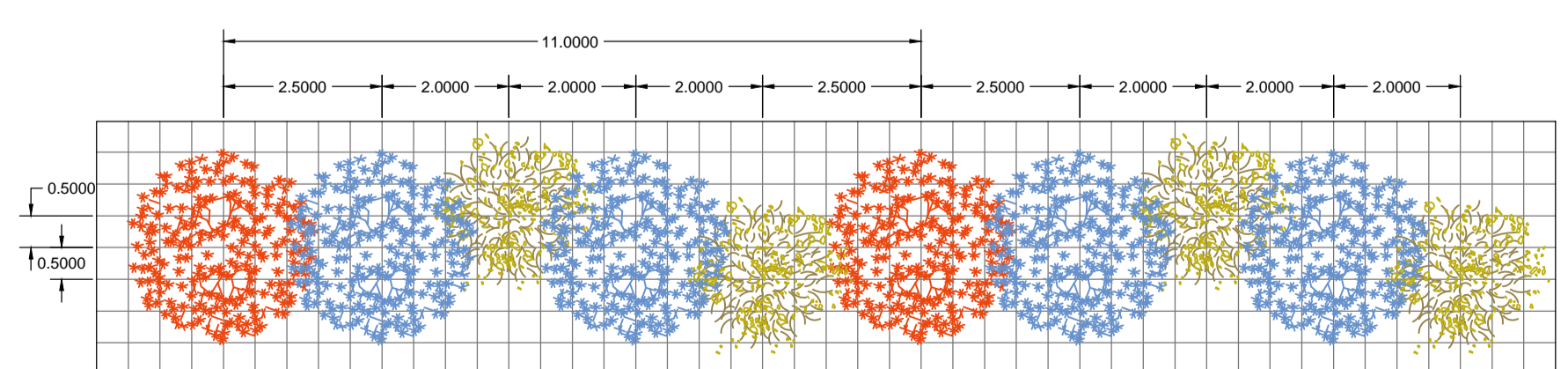
**SISTEMAZIONE DELLE ROTATORIE**  
 Euforbia arborea (*Euphorbia dendroides*)



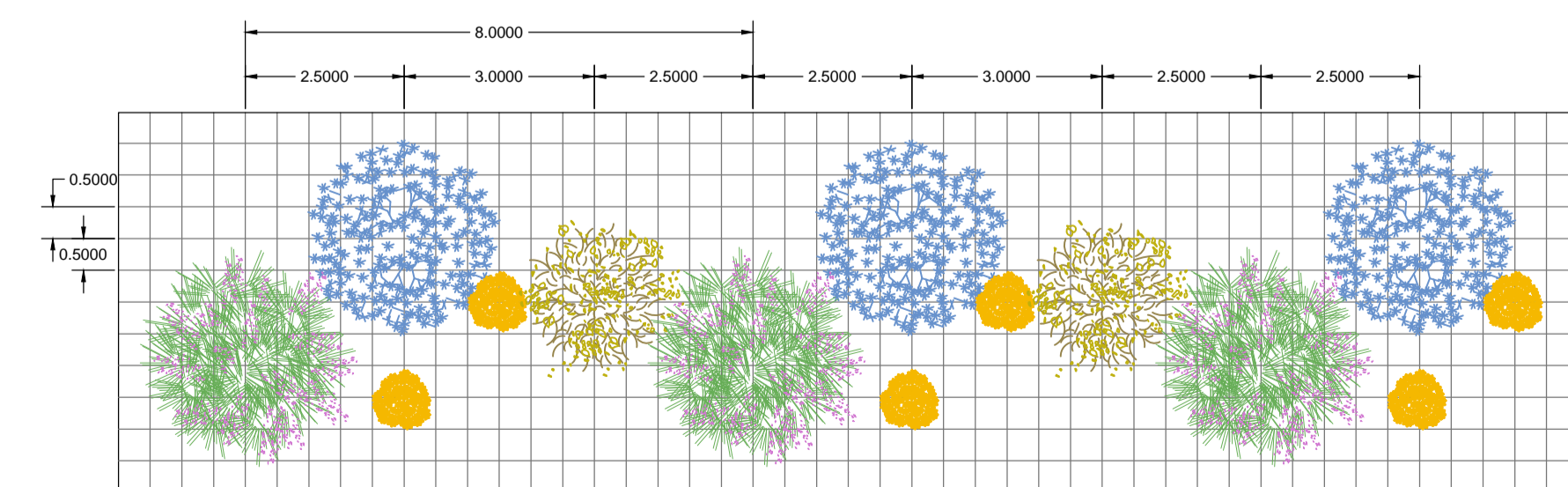
**SISTEMAZIONE DELLE ROTATORIE**  
 Lavanda selvatica o stecade (*lavandula stoechas*)







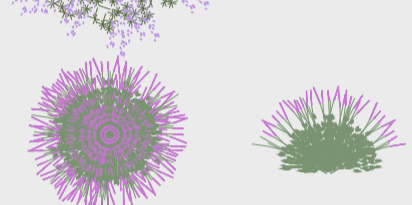
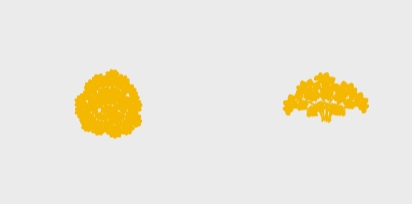
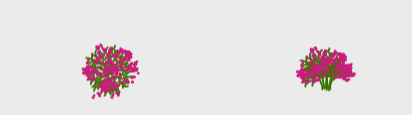



**FILARE ARBUSTIVO**  
 Corbezzolo (*Arbutus unedo*), Ginestra odorosa (*Spartium junceum* L.), Mirto (*Myrtus communis*)



**SISTEMAZIONE RILEVATI E TRINCEE**  
 Erica arborea (*Erica arborea*), Mirto (*Myrtus communis*), Ginestra odorosa (*Spartium junceum* L.), Euforbia arborea (*Euphorbia dendroides*)



-  Ginestra odorosa (*Spartium junceum* L.)
-  Ginepro rosso (*Juniperus oxycedrus*)
-  Mirto (*Myrtus communis*)
-  Corbezzolo (*Arbutus unedo*)
-  Erica arborea (*Erica arborea*)
-  Limoniastro cespuglioso (*Limoniastrum monopetalum*)
-  Rosmarino (*Rosmarinus officinalis*)
-  Lavanda selvatica o stecade (*lavandula stoechas*)
-  Euforbia arborea (*Euphorbia dendroides*)
-  Cisto rosso (*Cistus incanus*)



**Direzione Progettazione e Realizzazione Lavori**

**NUOVA S.S.125/133bis OLBIA-PALAU**  
 Tratta Olbia Nord al km 330+800 San Giovanni  
 Adeguamento al tipo B (4 corsie)

<b>PROGETTO DI FATTIBILITA' TECNICO ECONOMICA</b>	cod. CA152			
<b>PROGETTAZIONE: ANAS - DIREZIONE PROGETTAZIONE E REALIZZAZIONE LAVORI</b>				
PROGETTISTA: Ing. Antonio Scalamandrè Ordine Ing. di Frosinone n. 1063				
IL GEOLOGO Geol. Roberto Laureti Ordine Geol. del Lazio n. 1826				
COORDINATORE DELLA SICUREZZA IN FASE DI PROGETTAZIONE Arch. Roberto Roggi				
VISTO: IL RESPONSABILE DEL PROCEDIMENTO Ing. Francesco Ruggieri				
PROTOCOLLO	DATA			
<b>RIESAME DEL PROVVEDIMENTO DI VALUTAZIONE AMBIENTALE (CTVIA 11/05/2004)</b>				
<b>INQUADRAMENTO PROGETTUALE</b>				
Sezioni e dettagli opere a verde - Sesti di impianto				
CODICE PROGETTO	NOME FILE	PROGR. ELAB.	REVISIONE	SCALA
PROGETTO	0322_TO01A00AMBSZ07A	0322		
DIPCA0152				
D				
C				
B				
A	EMISSIONE	Gen 2022		
REV.	DESCRIZIONE	DATA	REDATTO	VERIFICATO
				APPROVATO