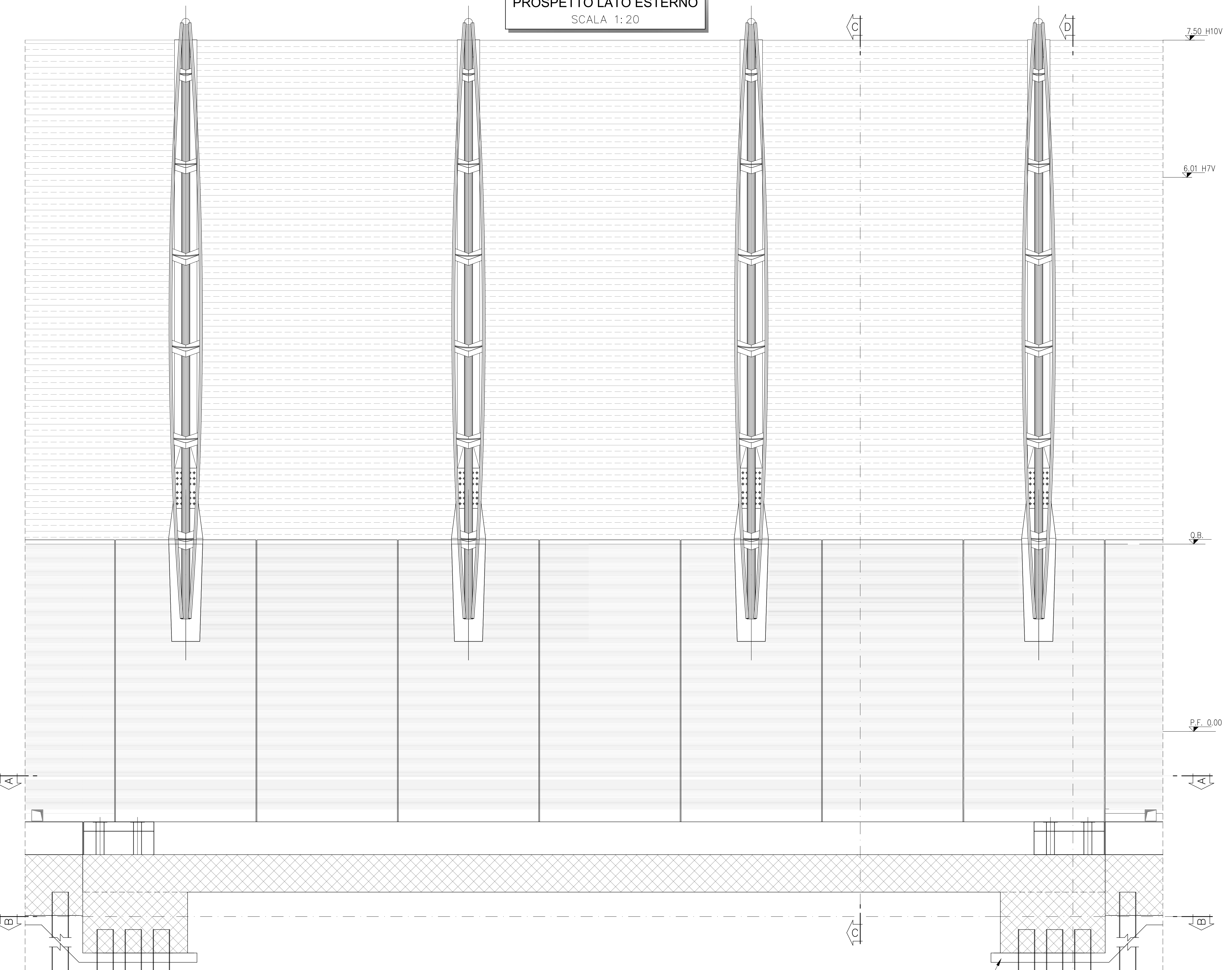
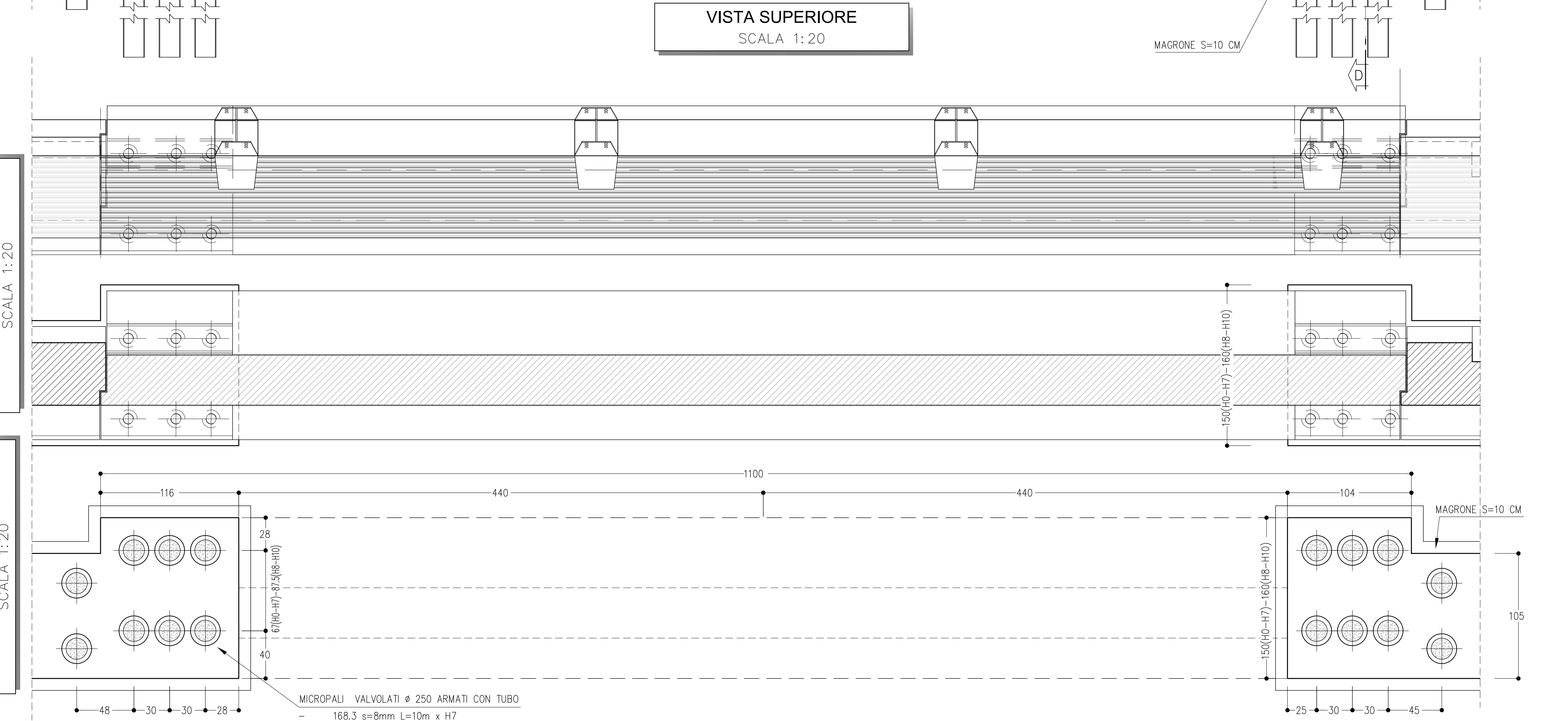


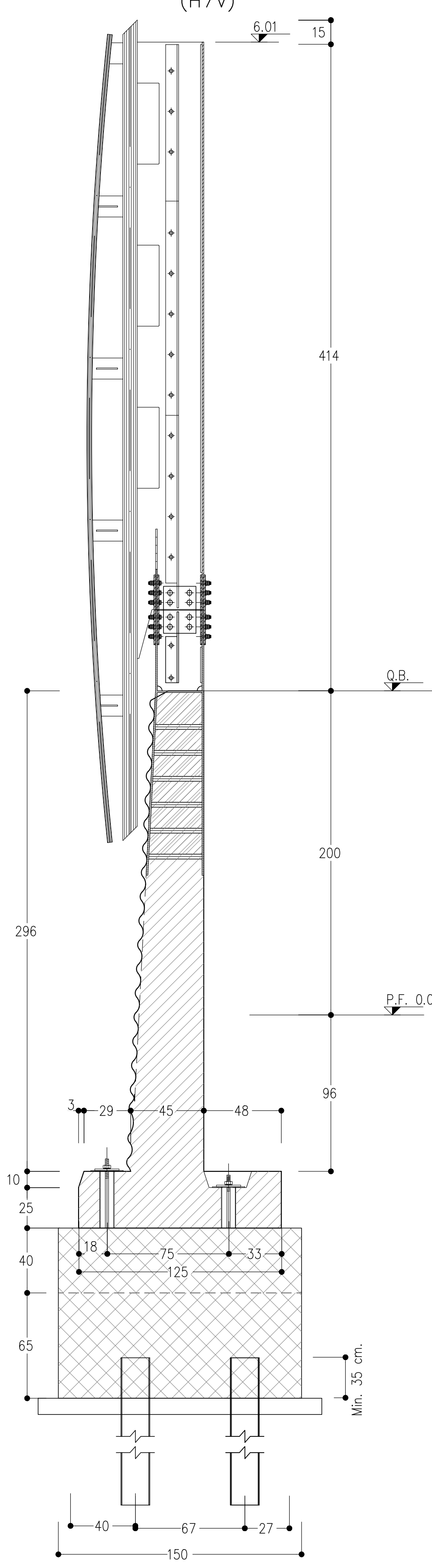
PROSPETTO LATO ESTERNO
SCALA 1:20



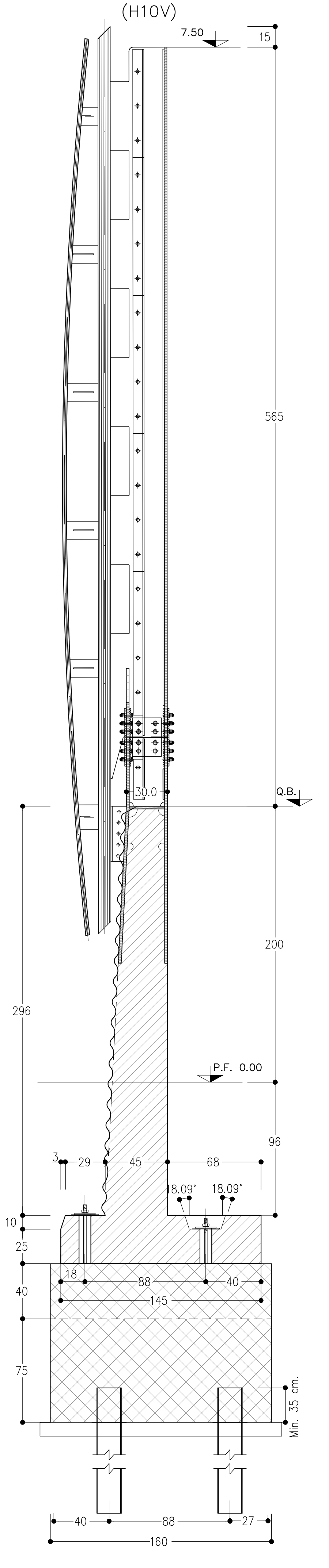
VISTA SUPERIORE
SCALA 1:20



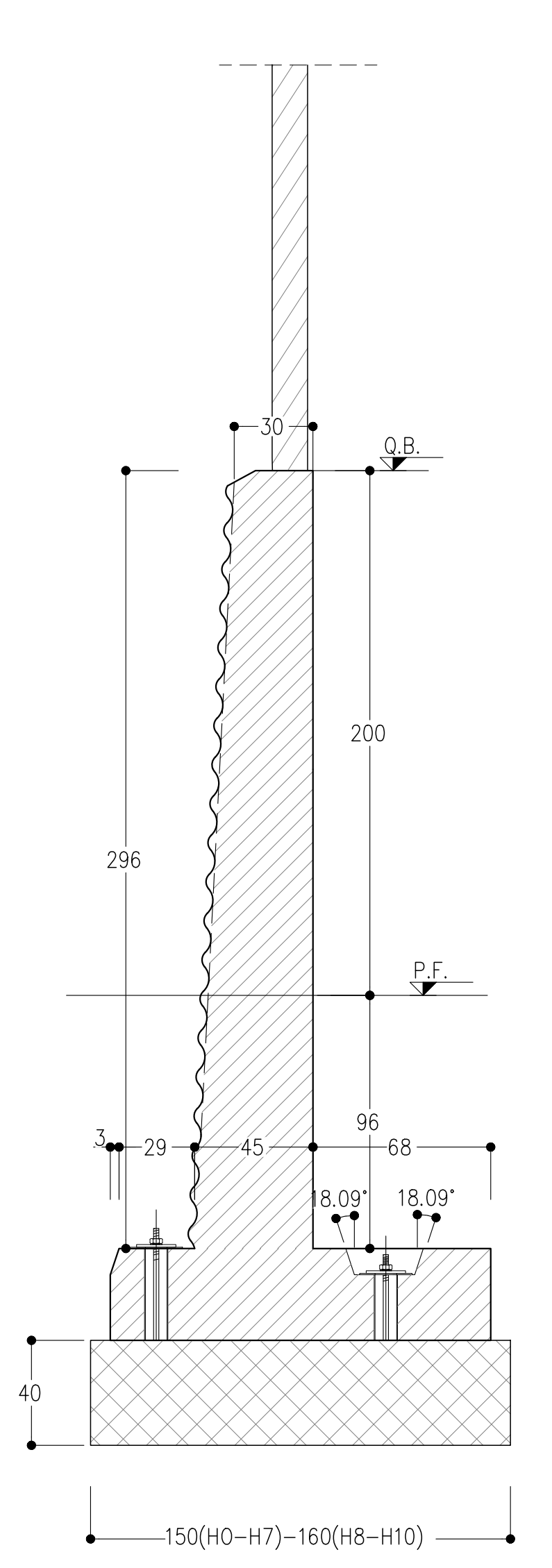
SEZIONE D-D
SCALA 1:20
(H7V)



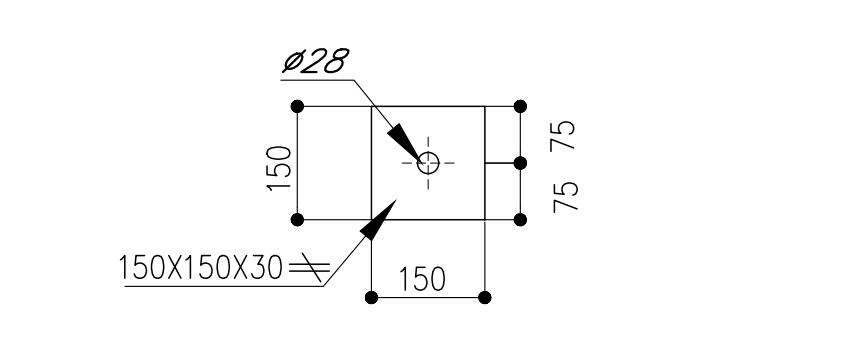
SEZIONE D-D
SCALA 1:20
(H10V)



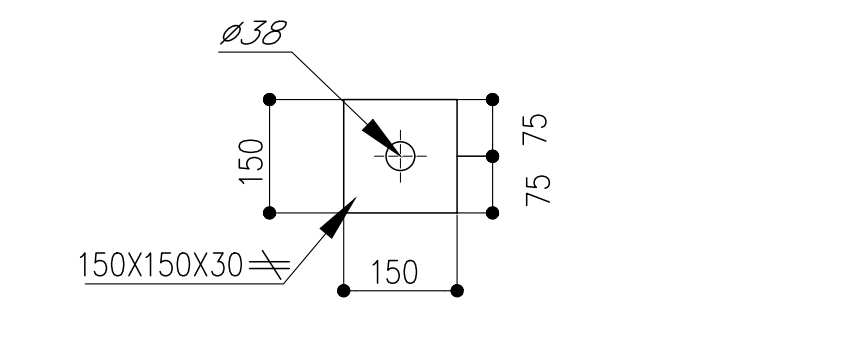
SEZIONE C-C
SCALA 1:20



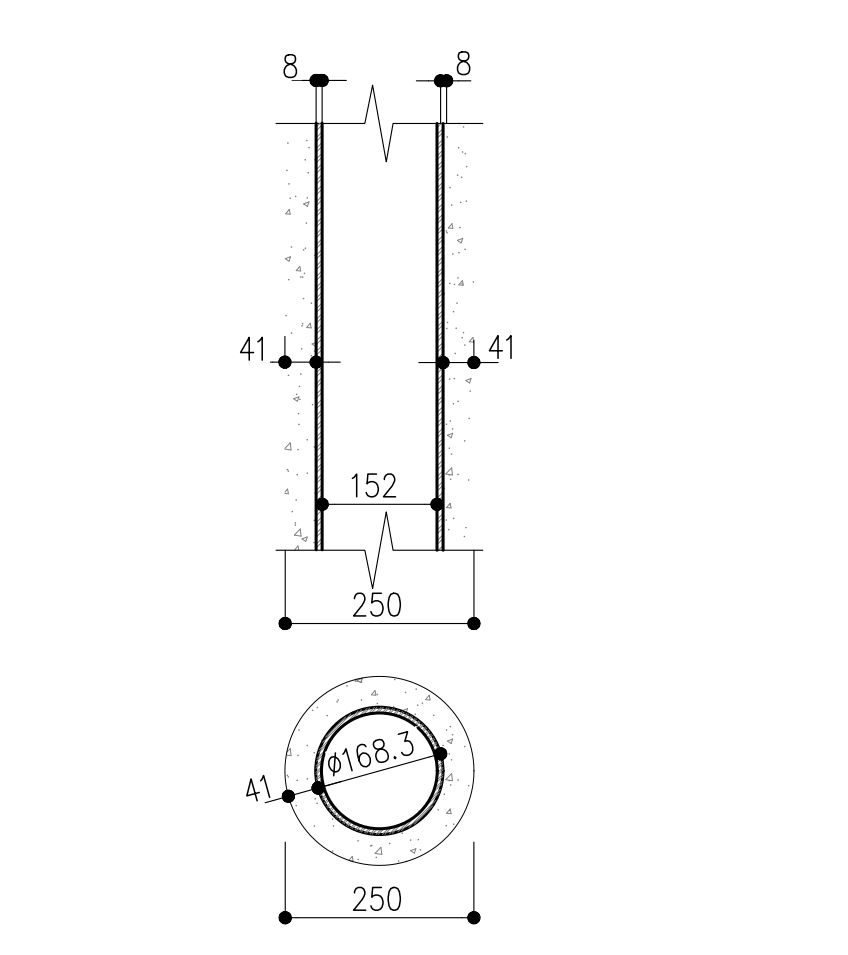
PIASTRA TIRAFONDO (H0-H2)
SCALA 1:10
(MISURE ESPRESSE IN mm)



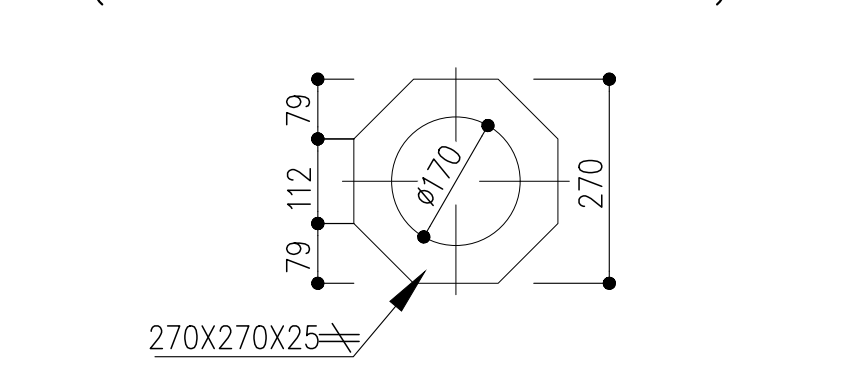
PIASTRA TIRAFONDO (H3-H7)
SCALA 1:10
(MISURE ESPRESSE IN mm)



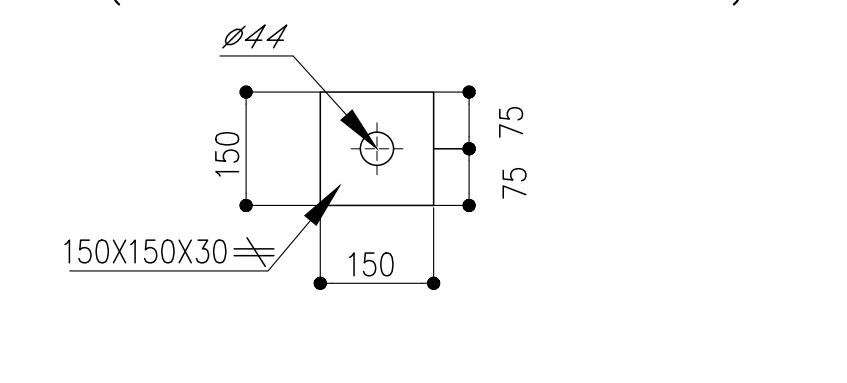
TIRAFONDO M40 (H8-H10)
SCALA 1:10
(MISURE ESPRESSE IN mm)



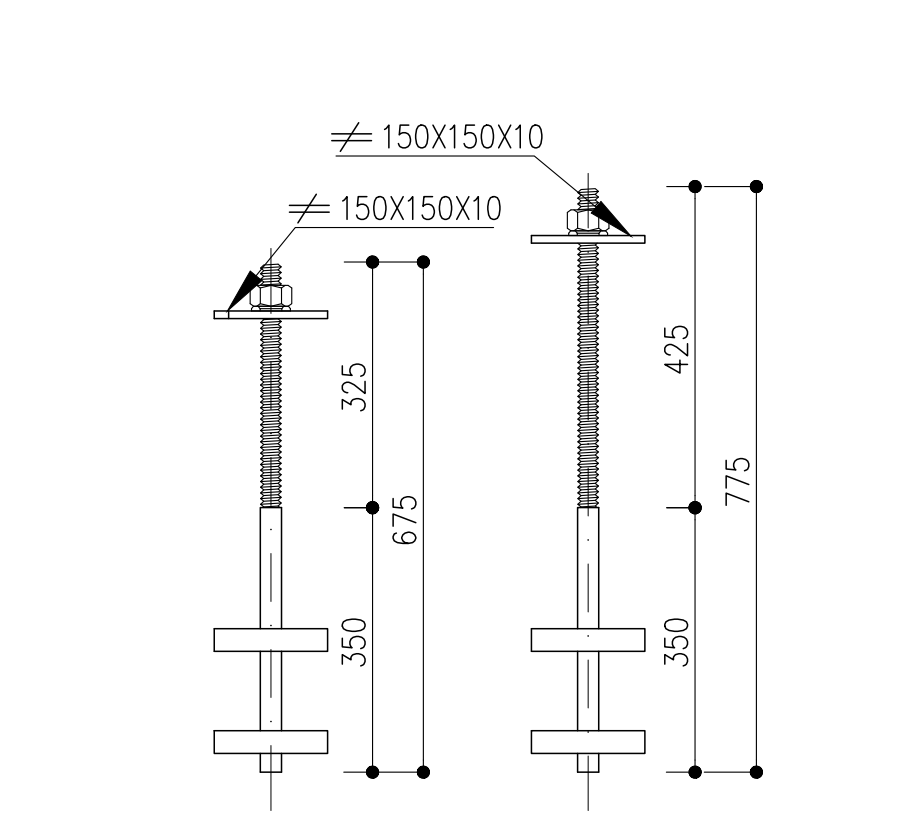
PIASTRA MICROPALO
SCALA 1:10
(MISURE ESPRESSE IN mm)



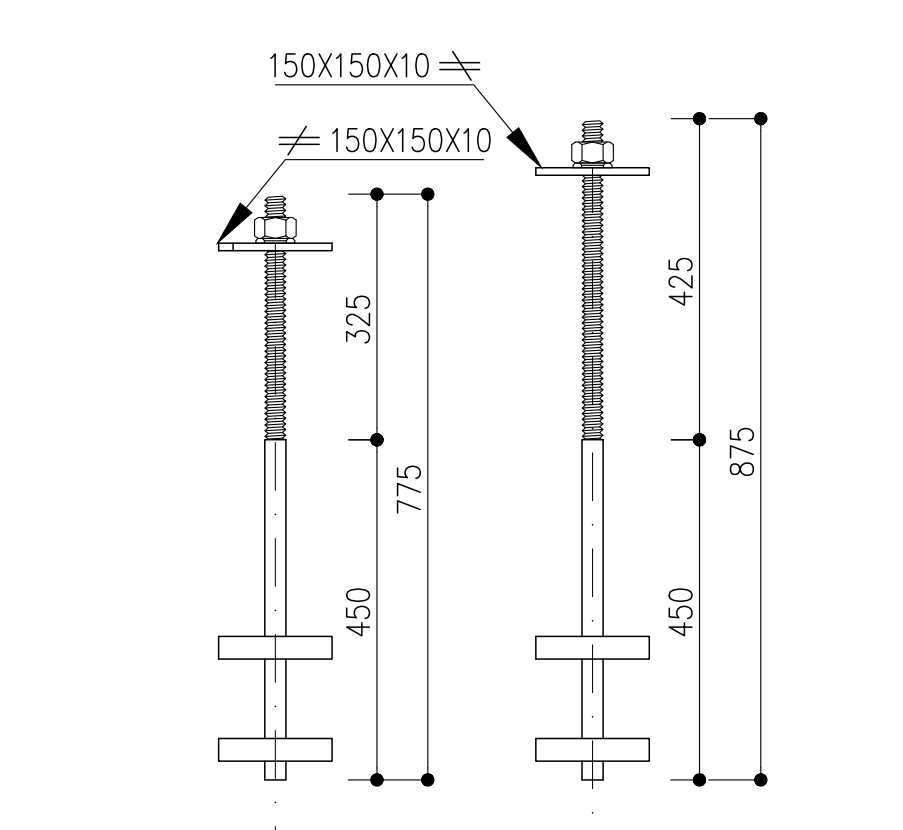
PIASTRA TIRAFONDO (H8-H10)
SCALA 1:10
(MISURE ESPRESSE IN mm)



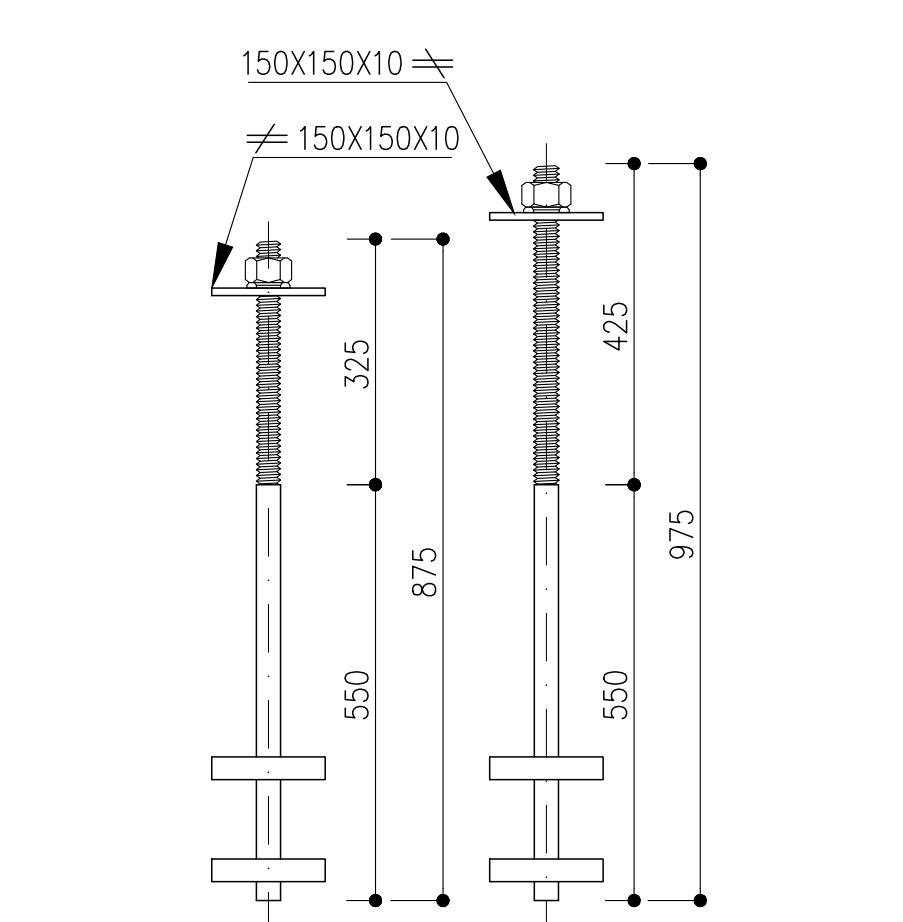
TIRAFONDO M24 (H0-H2)
SCALA 1:10
(MISURE ESPRESSE IN mm)



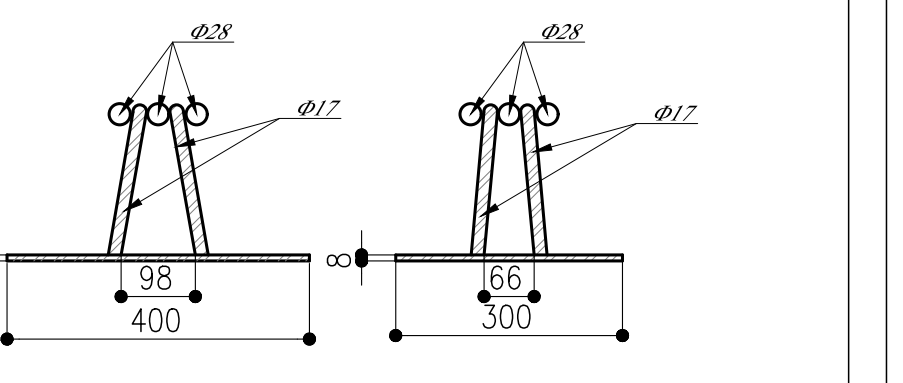
TIRAFONDO M34 (H3-H7)
SCALA 1:10
(MISURE ESPRESSE IN mm)



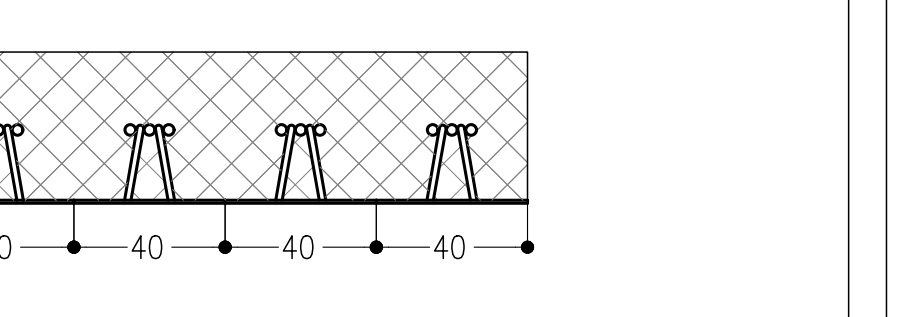
TIRAFONDO M40 (H8-H10)
SCALA 1:10
(MISURE ESPRESSE IN mm)



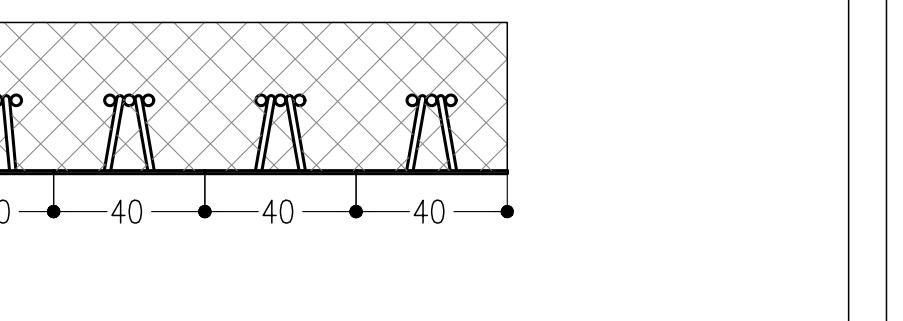
ARMATURA TRAVE
SCALA 1:10
(MISURE ESPRESSE IN mm)



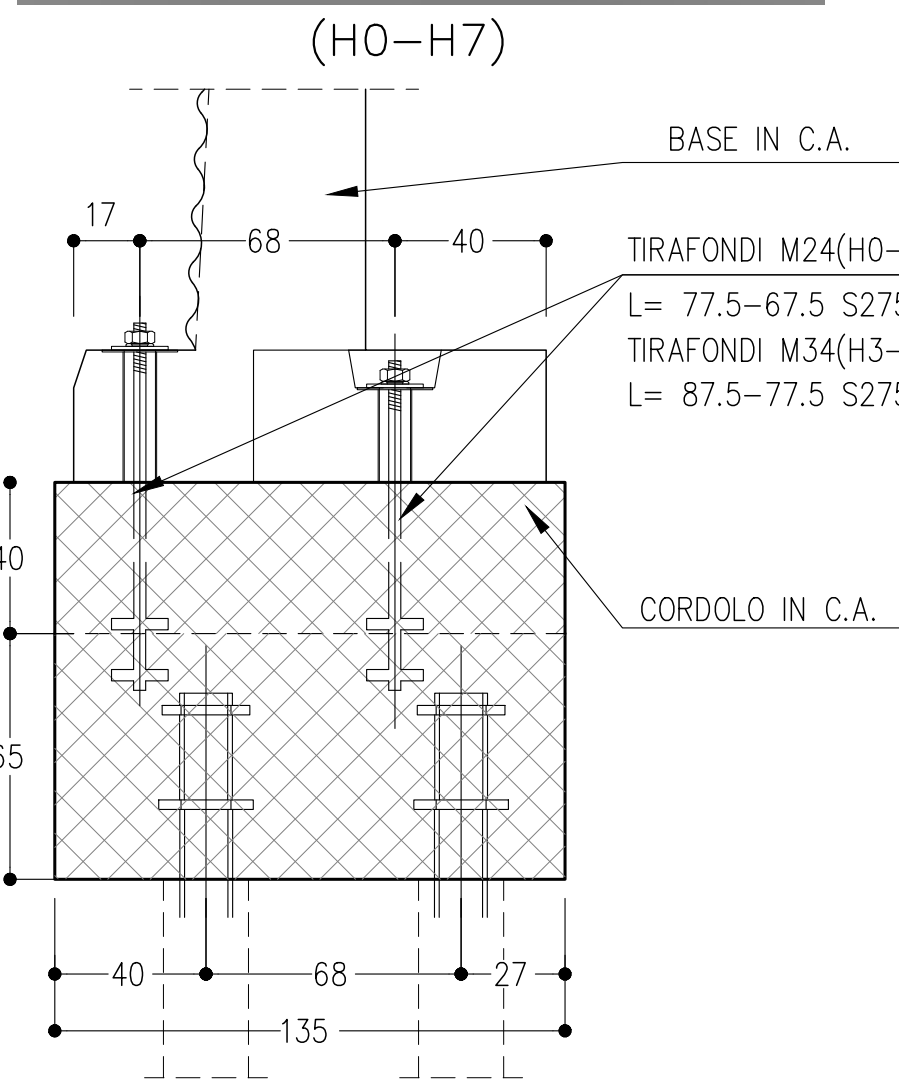
SEZIONE TRAVE TIPO NPS
SCALA 1:20
160 cm



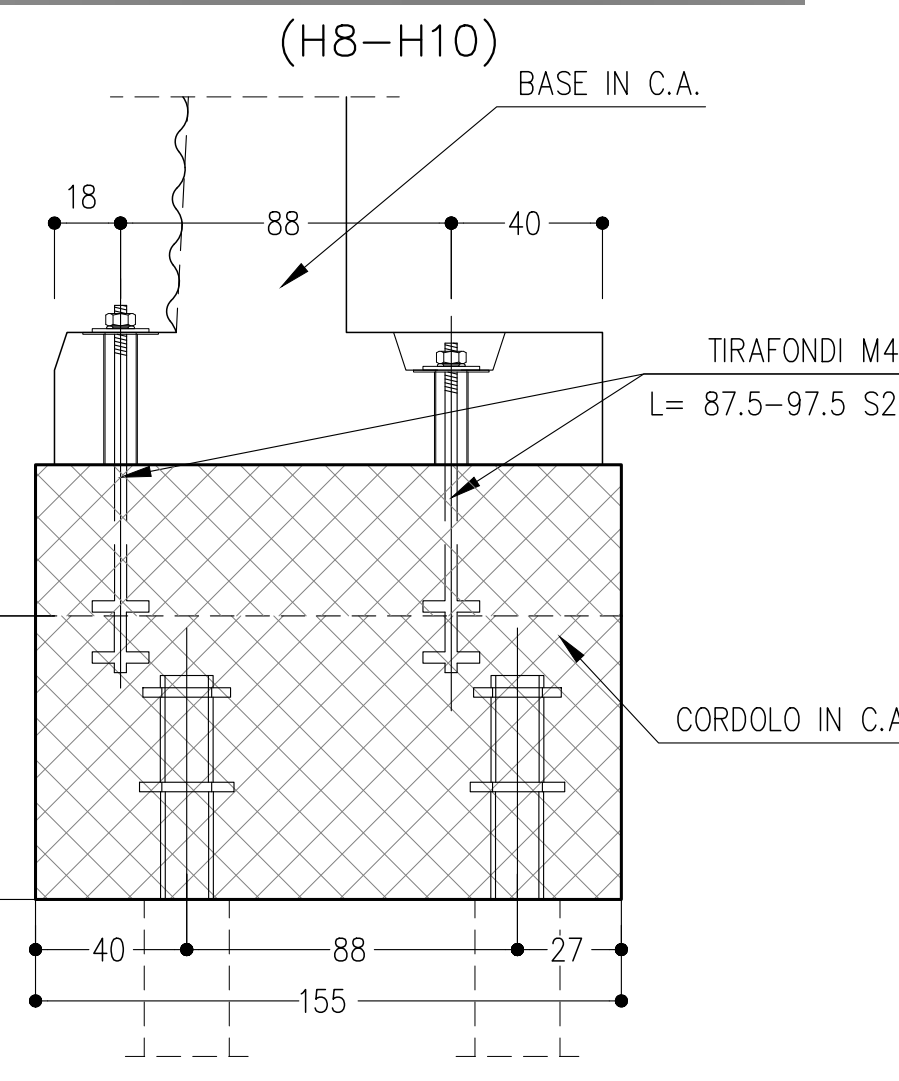
SEZIONE TRAVE TIPO NPS
SCALA 1:20
150 cm



SEZIONE SUI TIRAFONDI
SCALA 1:20
(H0-H7)



SEZIONE SUI TIRAFONDI
SCALA 1:20
(H8-H10)



- NOTE**
- EVENTUALI DIFFERENZE TRA LE MISURE DI QUOTE TOTALI E LA SOMMATORIA DELLE MISURE DI QUOTE PARZIALI SONO DOVUTE AD ARROTONDAMENTI AUTOMATICI
 - PER LE CARATTERISTICHE DEI MATERIALI E NOTE DI CARATTERE GENERALE SI RIMANDA ALL'ELABORATO SPECIFICO DI RIFERIMENTO IN1A20026TTC0000001A

COMMITTENTE: **RFI** INFRASTRUTTURE FERROVIARIE ITALIANE
GRUPPO FERROVIE DELLO STATO ITALIANE

PROGETTAZIONE: **ITALFERR** GRUPPO FERROVIE DELLO STATO ITALIANE

INFRASTRUTTURE FERROVIARIE STRATEGICHE DEFINITE DALLA LEGGE OBIETTIVO N. 443/01 e s.m.i.

U.O. PROGETTAZIONE INTEGRATA NORD

PROGETTO DEFINITIVO

LINEA AVIAC MILANO - VENEZIA
LOTTO FUNZIONALE TRATTA AVIAC VERONA-PADOVA
NODO AVIAC DI VERONA: INGRESSO EST

BARRIERE ANTIRUMORE
Scavalco L=11m - Carpenteria fondazioni e particolari costruttivi

SCALA: 1:20/1:10

Rev.	Descrizione	Redatto	Data	Verificato	Data	Approvato	Data	Autore	Data
A	Emissione Esecutiva	V. Reali	Gen. 2022	M. Ripa	Gen. 2022	C. Mazzoni	11 Gen. 2022	A. Pempig	Gen. 2022

COMMESSA LOTTO FASE ENTE TIPO DOC. OPERA/DISCIPLINA PROGR. REV.
IN1A 20 D 26 BZ BA0000 007 A

FILE: I:\1420026TTC\B0000001A.DWG n. Elab.