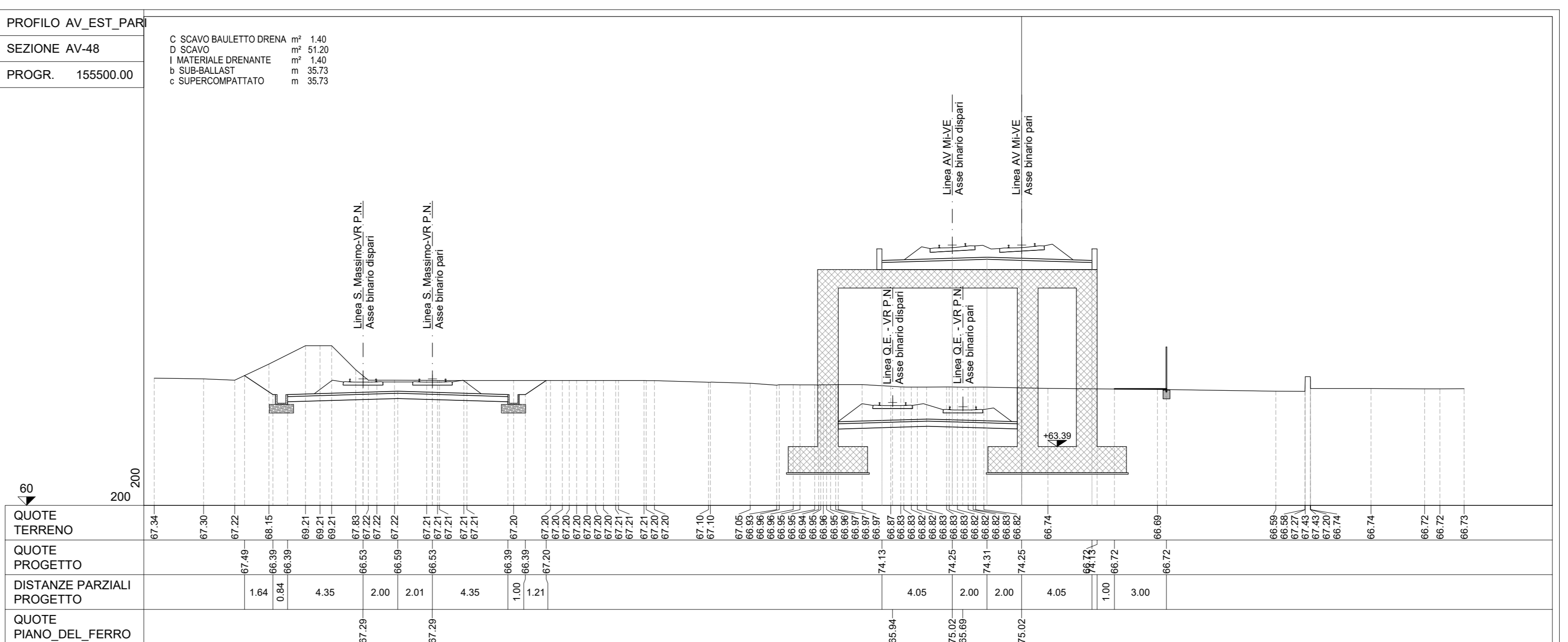
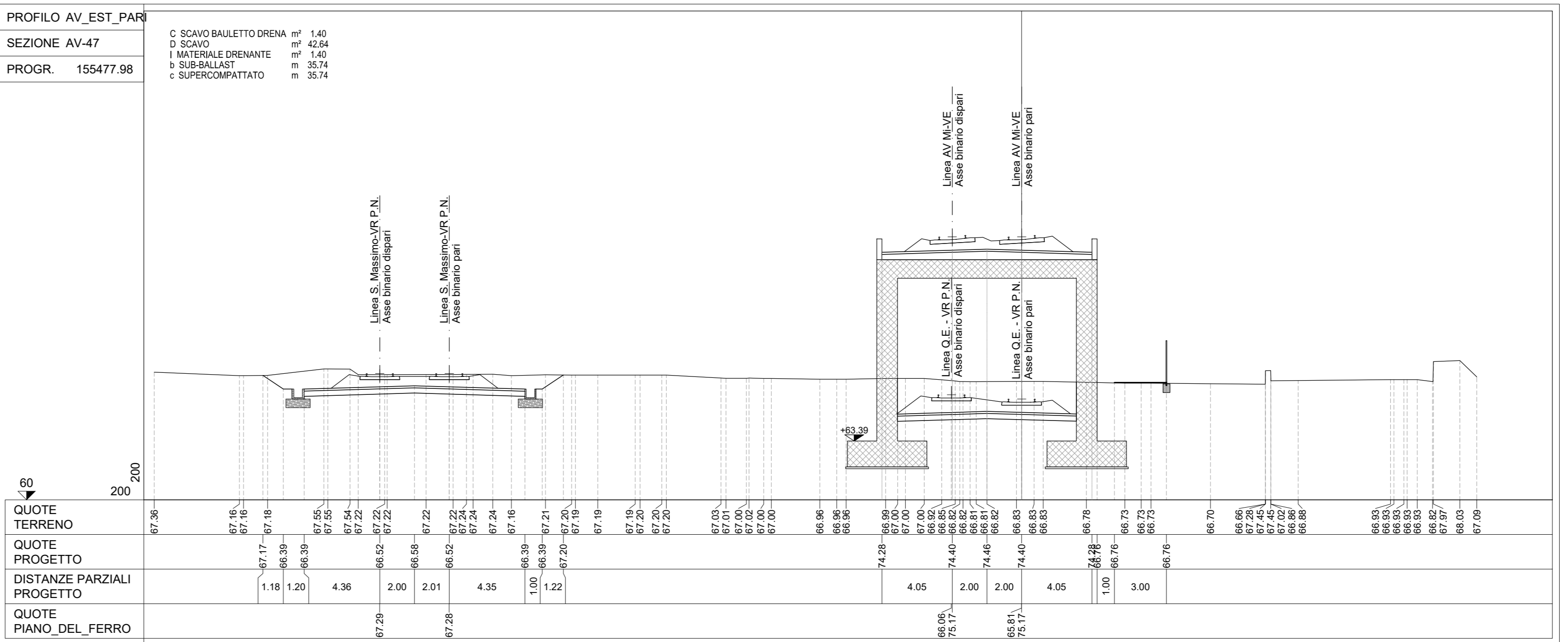
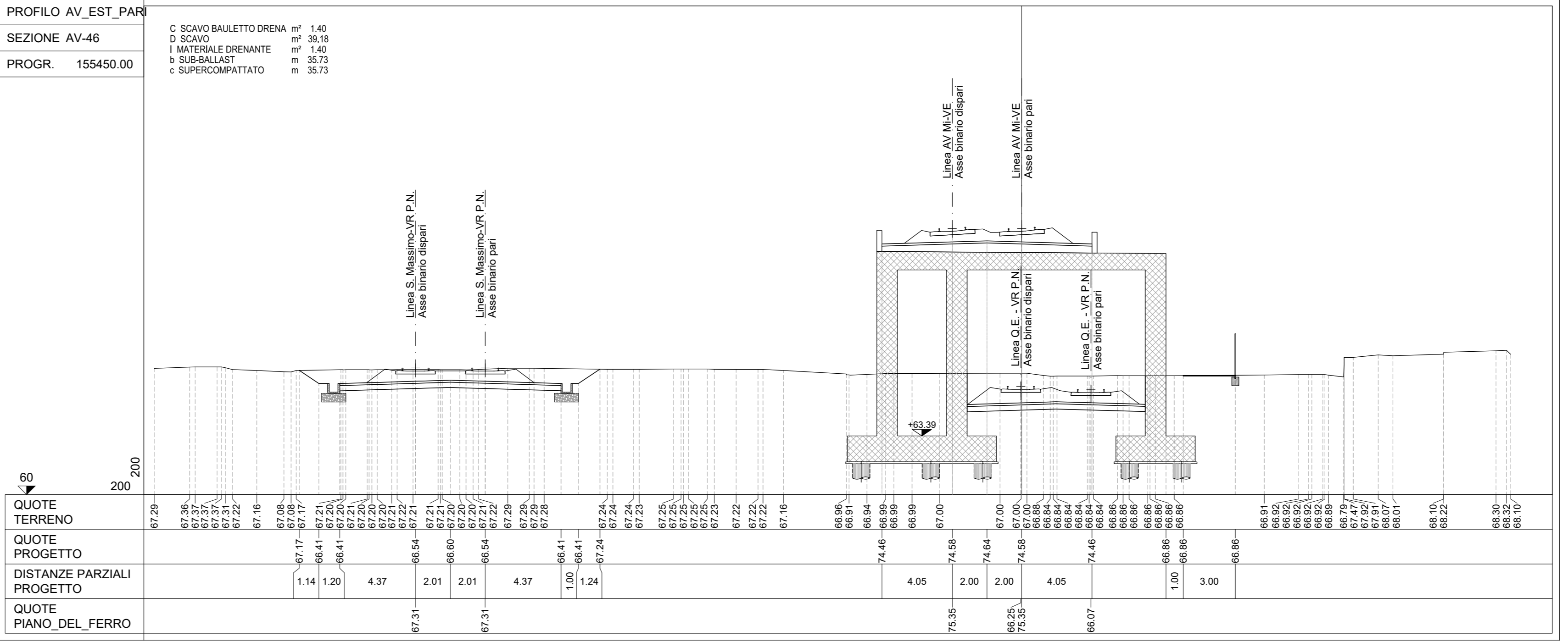
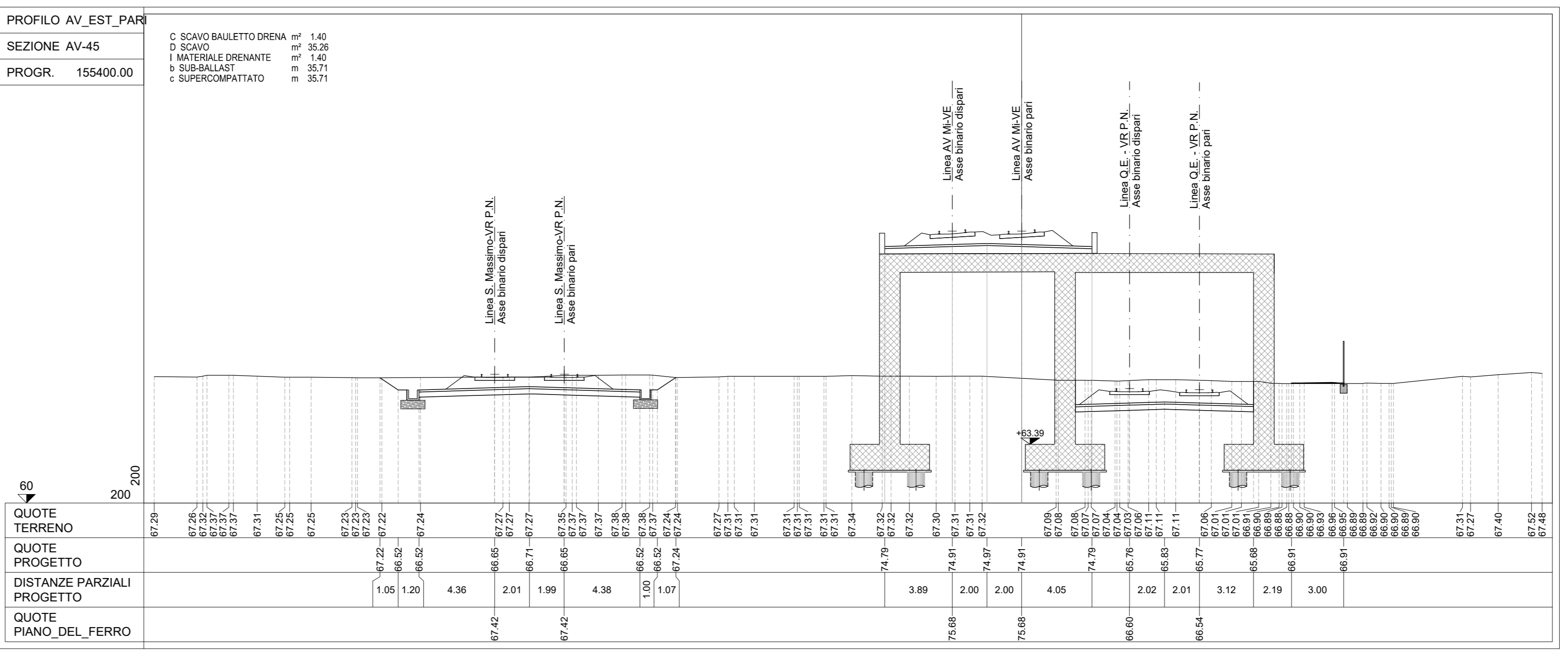
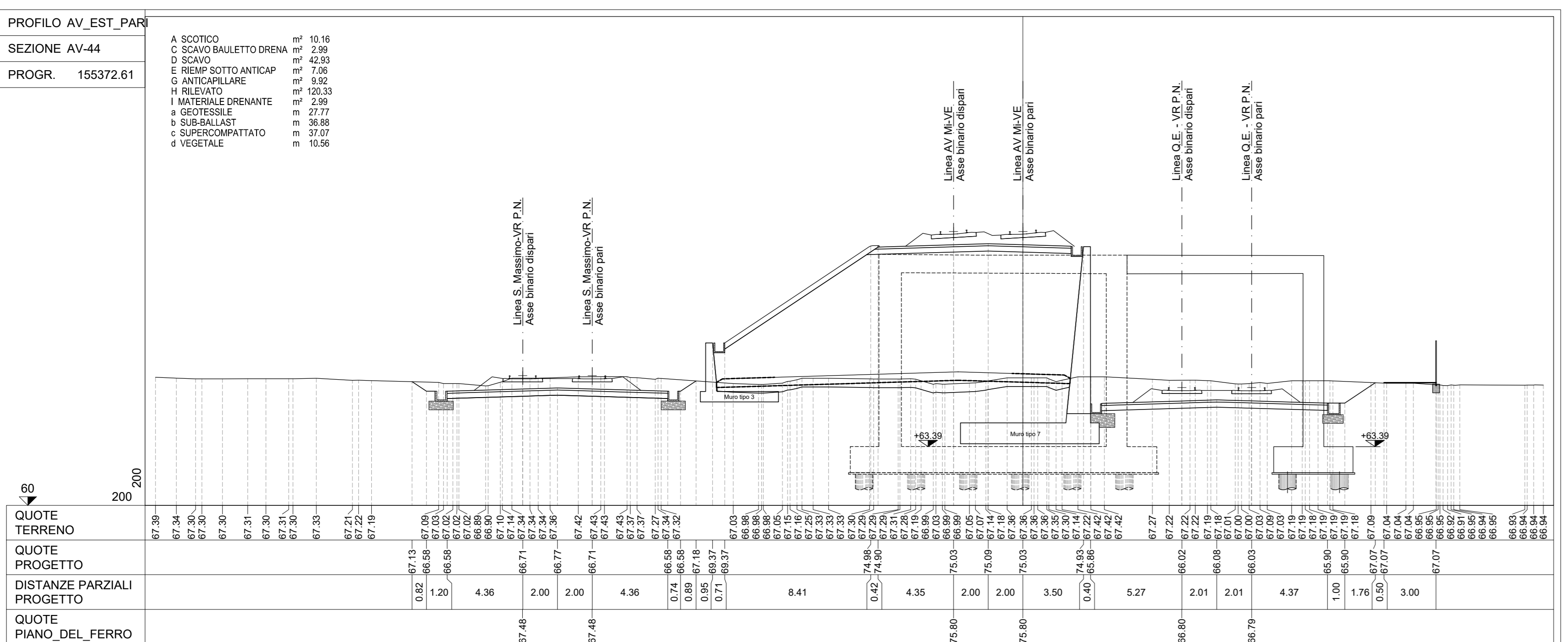
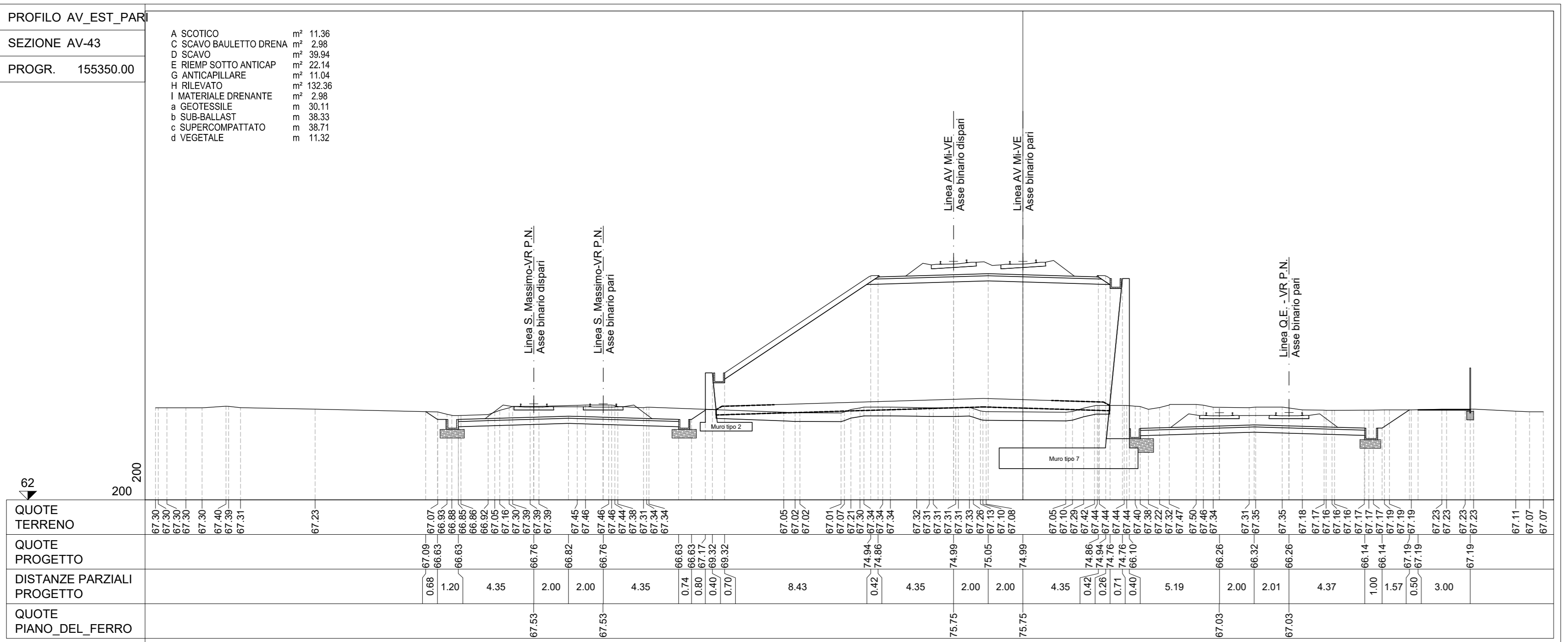
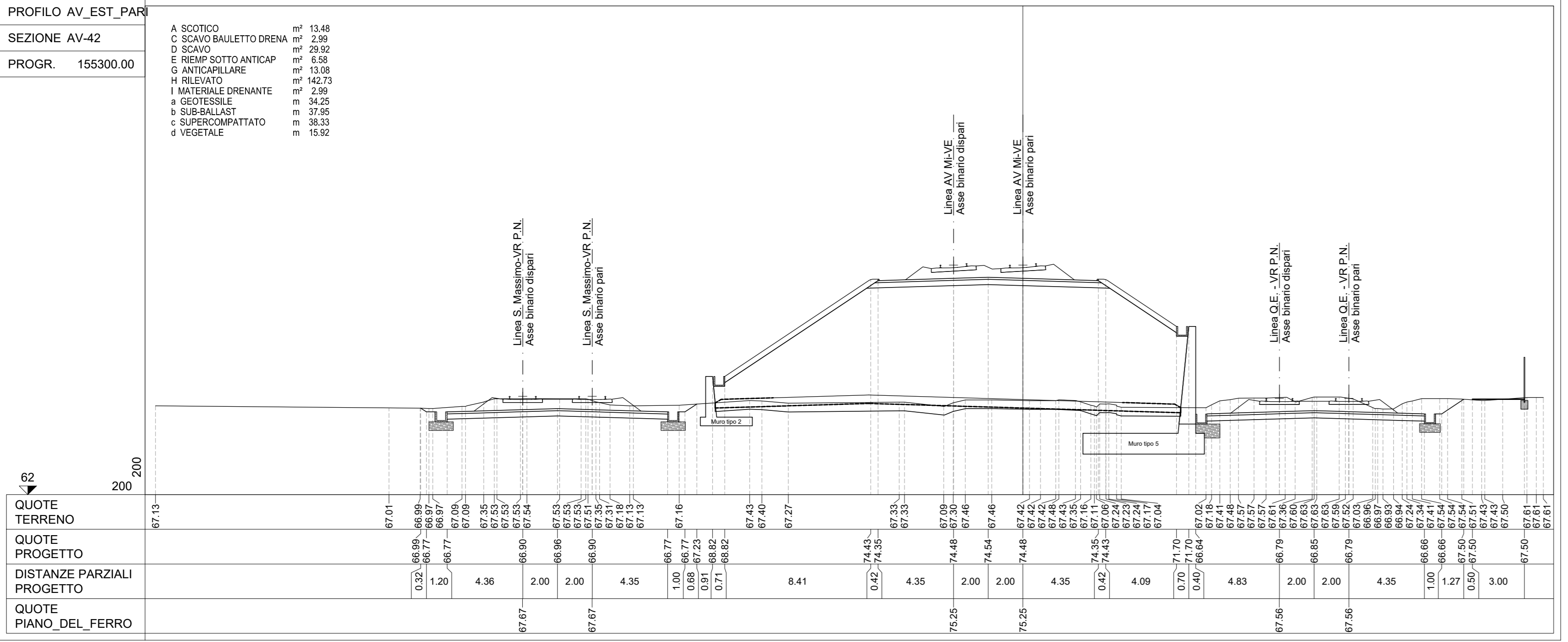
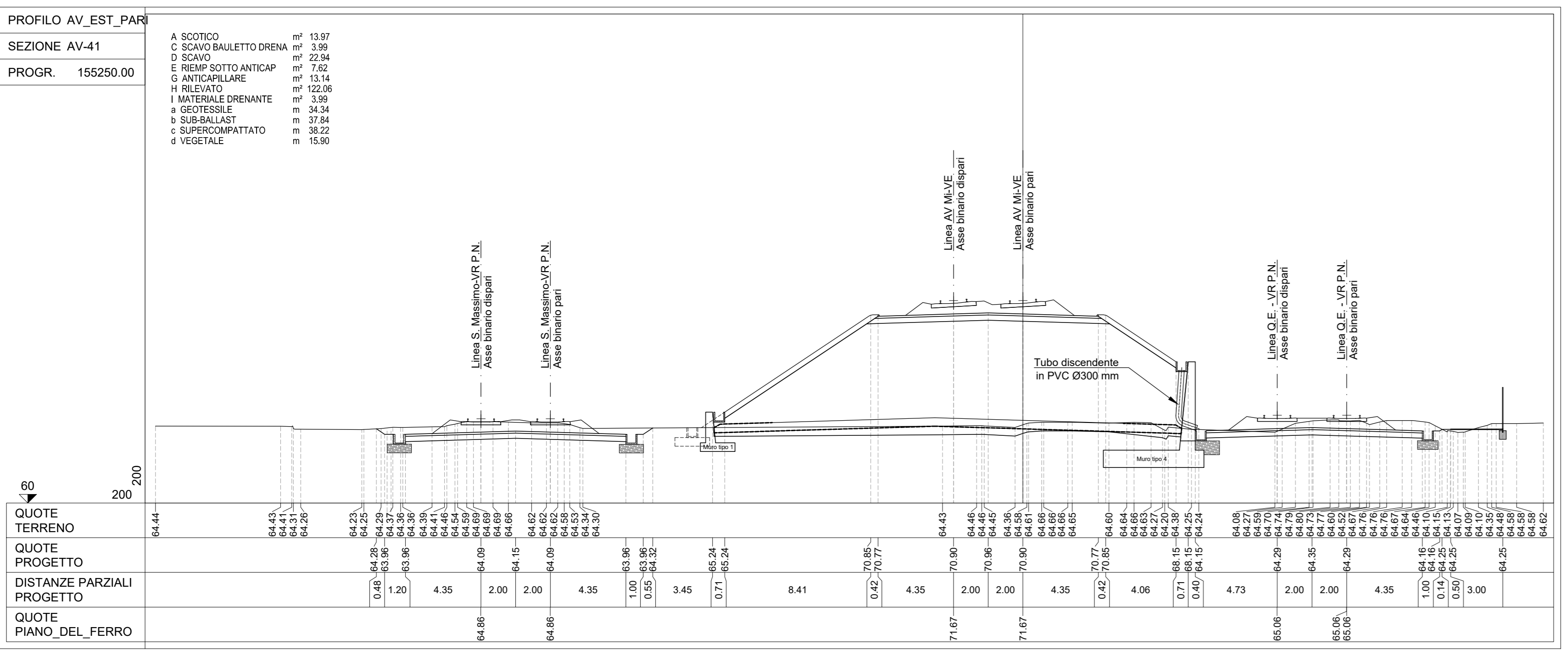
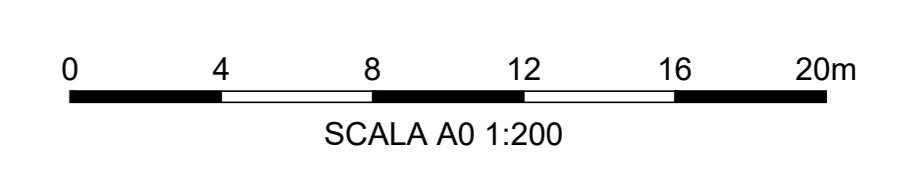


NOTE

1. Tutte le dimensioni sono espresse in m salvo dove diversamente specificato
2. Tutte le quote altimetriche sono espresse in m I.r.m.



COMMITTENTE: **RFI** INFRASTRUTTURE FERROVIARIE ITALIANE
 GRUPPO FERROVIE DELLO STATO ITALIANE

PROGETTAZIONE: **ITALFERR**
 GRUPPO FERROVIE DELLO STATO ITALIANE

INFRASTRUTTURE FERROVIARIE STRATEGICHE DEFINITE DALLA LEGGE OBIETTIVO N. 443/01 e s.m.i

CUP: J14D2000010001

U.O. PROGETTAZIONE INTEGRATA NORD

PROGETTO DEFINITIVO

LINEA AV/AC MILANO - VENEZIA
LOTTO FUNZIONALE TRATTA AV/AC VERONA-PADOVA
NODO AV/AC DI VERONA: INGRESSO EST

CORPO STRADALE FERROVIARIO
 Sezioni trasversali
 Linea AV/AC - Tav. 6

SCALA: 1:200

Rev.	Descrizione	Redatto	Data	Verificato	Data	Approvato	Data	Autorizzato / Data
A	Emissione Esecutiva	V. Rev.	Gen. 2022	M. Pigo	Gen. 2022	C. Mazzocchi	Gen. 2022	A. Pirego Gen. 2022

FILE: IN1A30026#9CS000000A.DWG n. Elab.