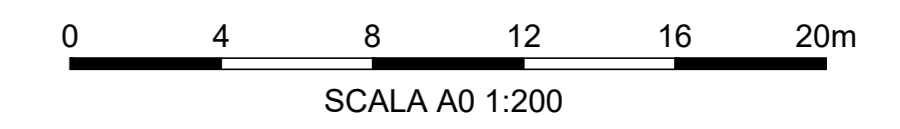
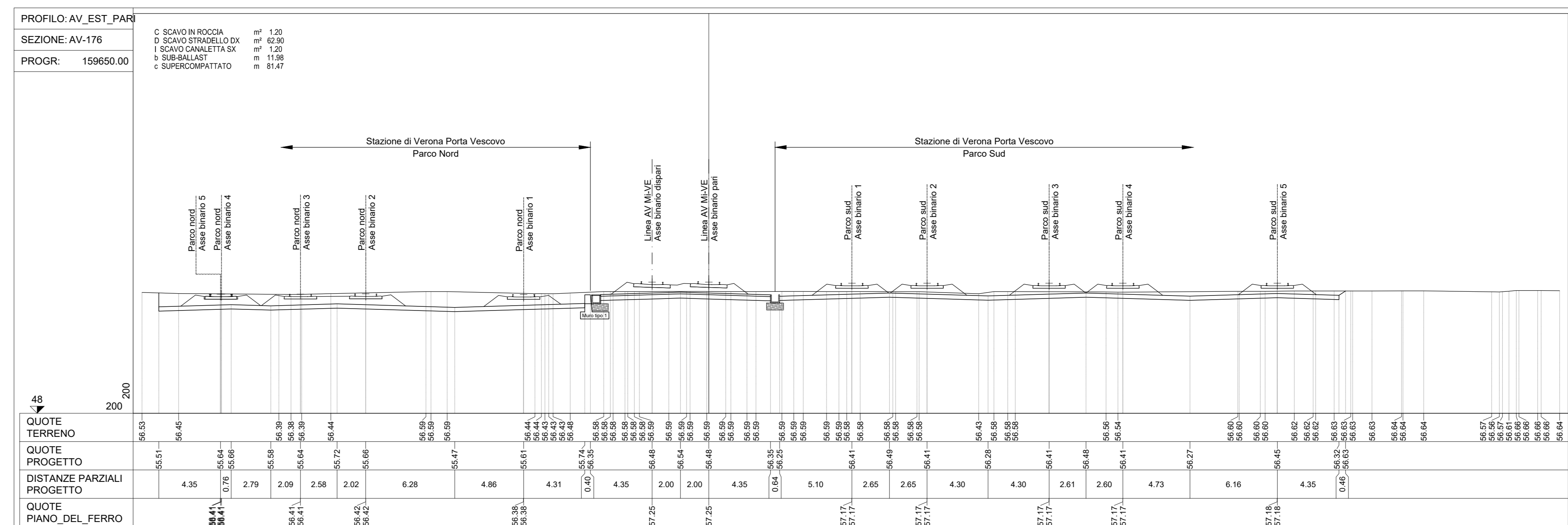
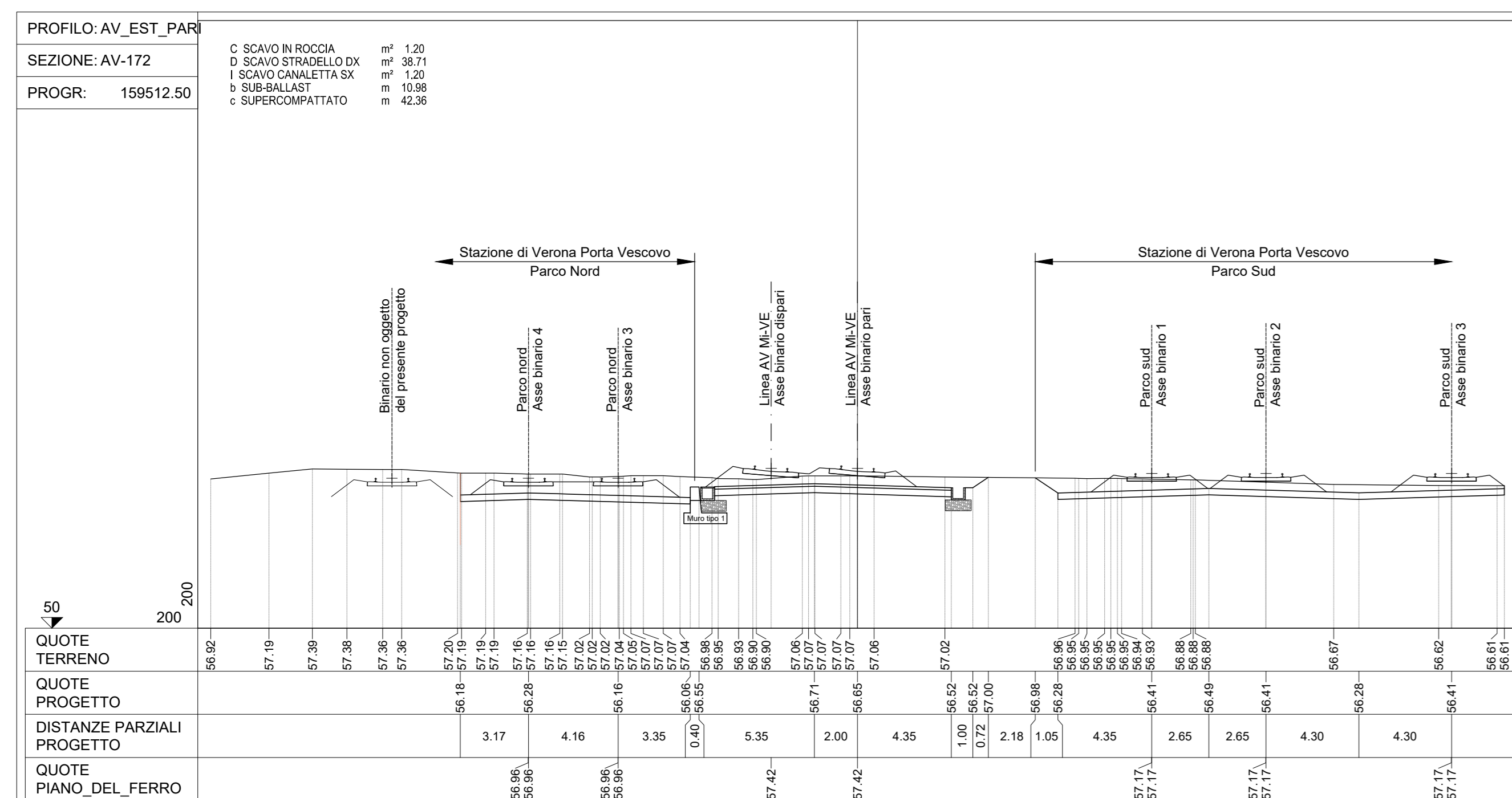
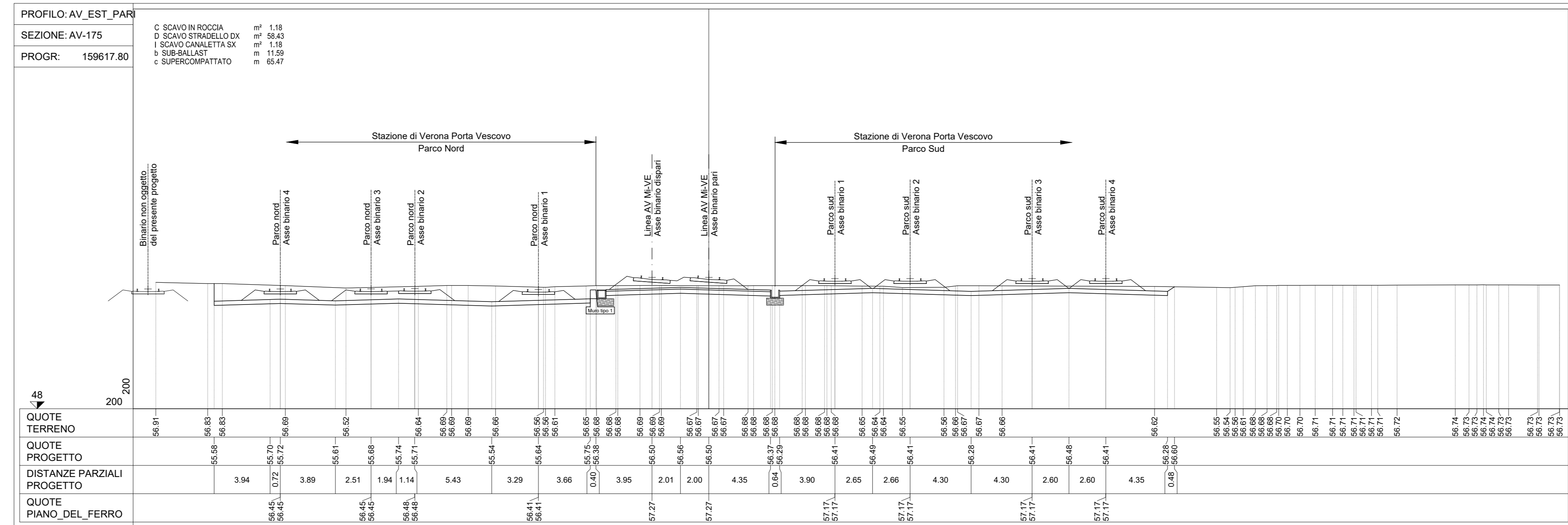
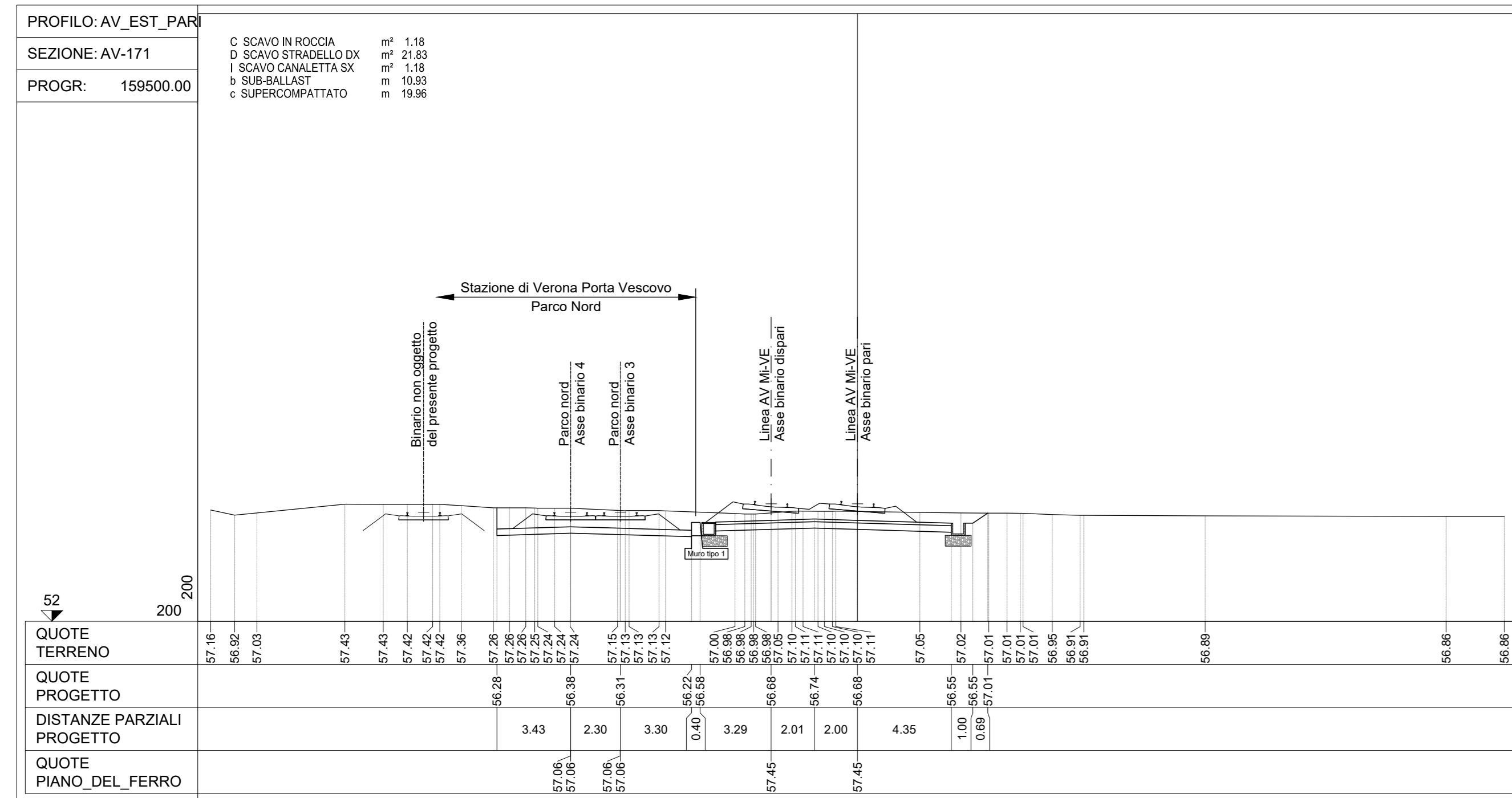
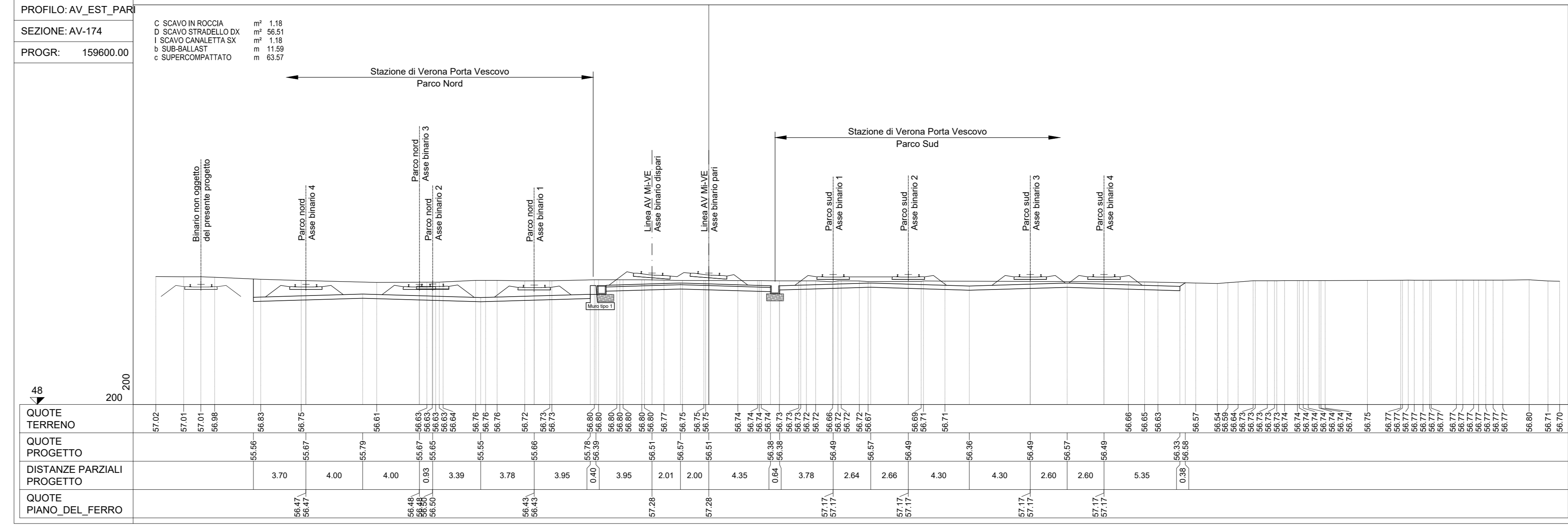
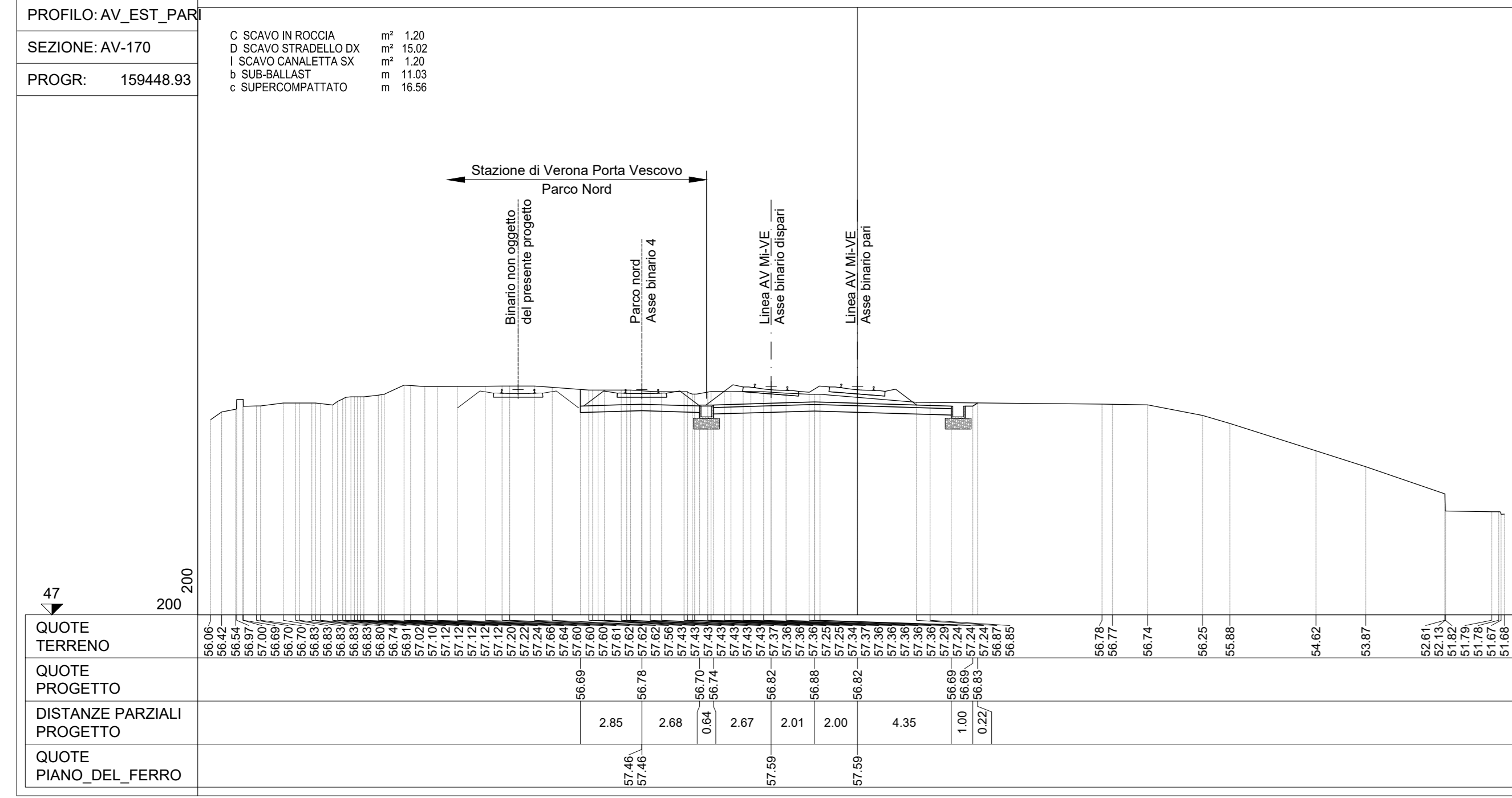
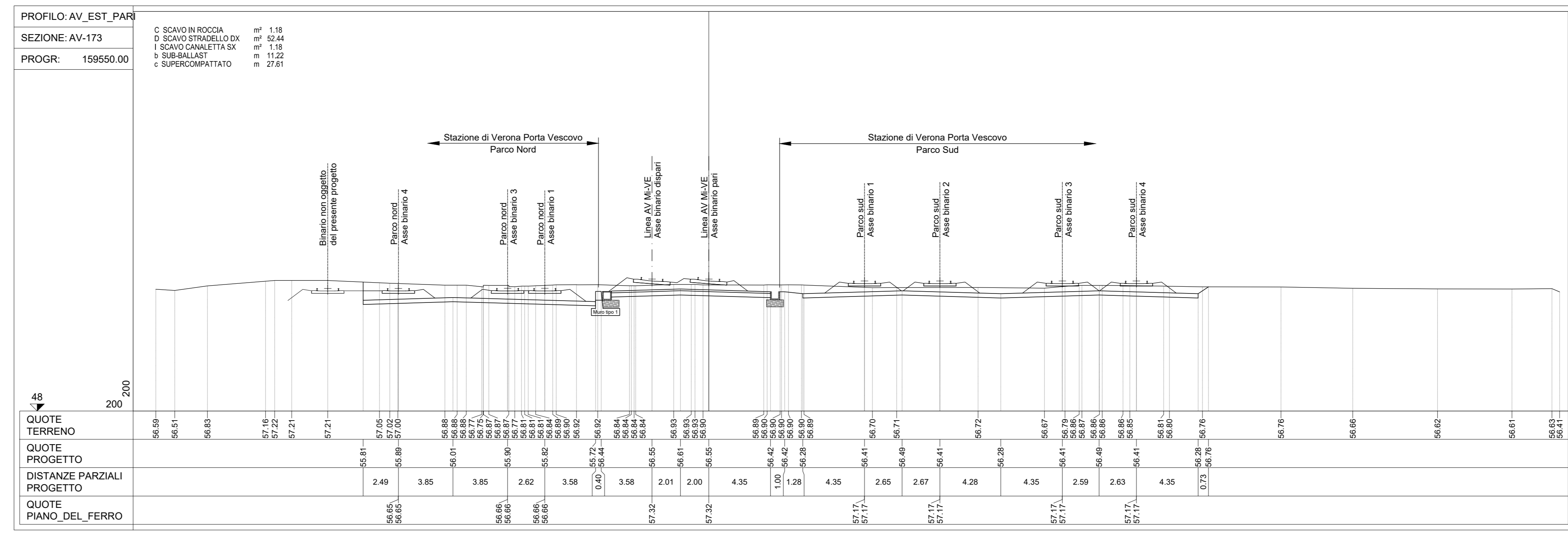
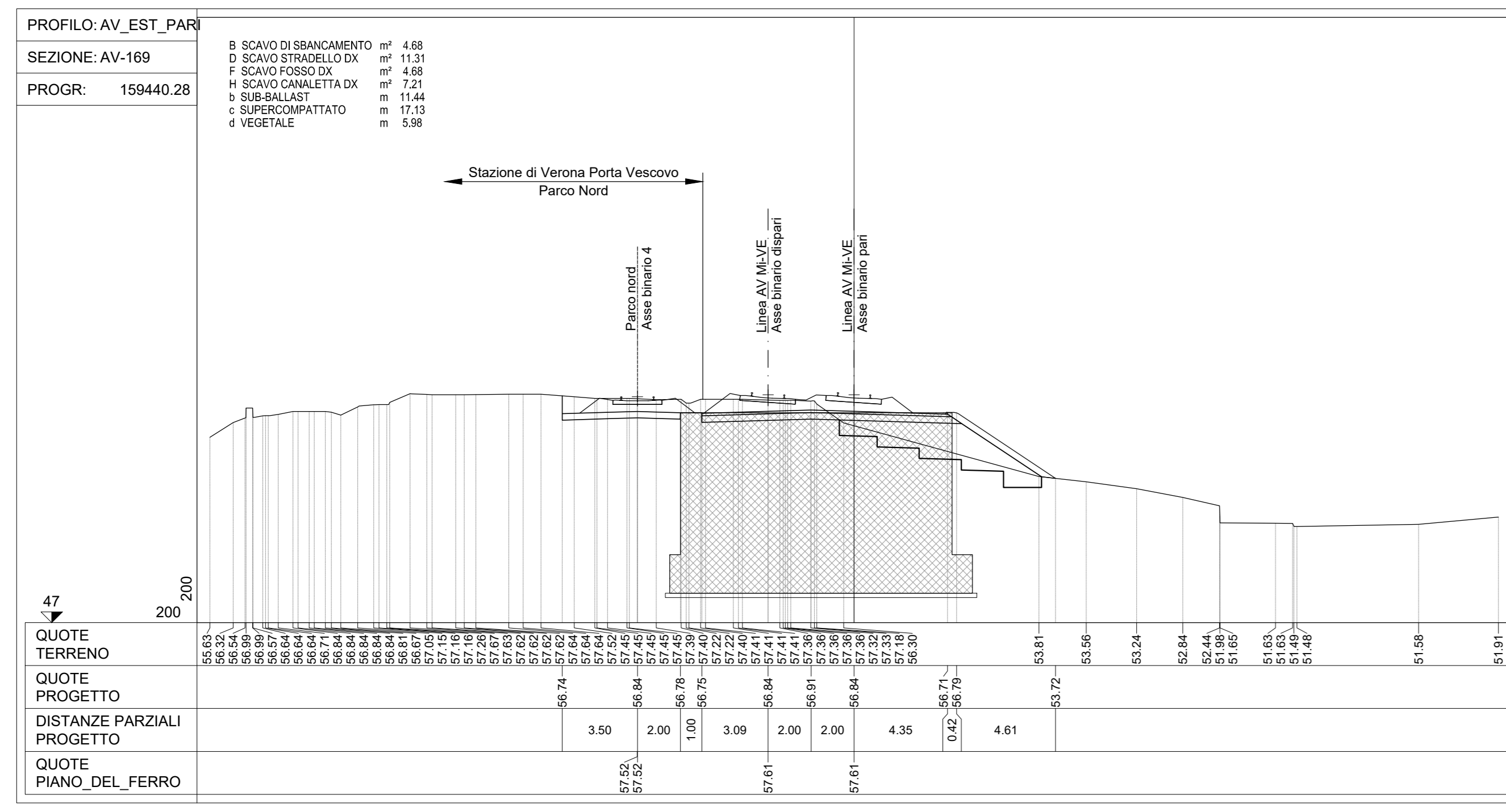


NOTE

- 1. Tutte le dimensioni sono espresse in m salvo dove diversamente specificato
3. Tutte le quote altimetriche sono espresse in m l.m.m.



Logos for RFI (Rete Ferroviaria Italiana) and ITALFERR (Gruppo Ferrovie dello Stato Italiane).

INFRASTRUTTURE FERROVIARIE STRATEGICHE DEFINITE DALLA LEGGE OBIETTIVO N. 443/01 e s.m.i

U.O. PROGETTAZIONE INTEGRATA NORD
PROGETTO DEFINITIVO
LINEA AV/AC MILANO - VENEZIA
LOTTO FUNZIONALE TRATTA AV/AC VERONA-PADOVA
NODO AV/AC DI VERONA: INGRESSO EST

CORPO STRADALE FERROVIARIO
Sezioni trasversali
Linea AV/AC - Tav. 22

SCALA: 1:200

Table with columns: COMMESSA, LOTTO, FASE, ENTE, TIPO DOC., OPERA/DISCIPLINA, PROG., REV.

Table with columns: Revs., Descrizione, Redatto, Data, Verificato, Data, Approvato, Data, Autorizzatori / Data.