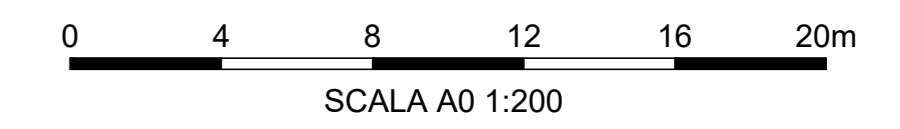
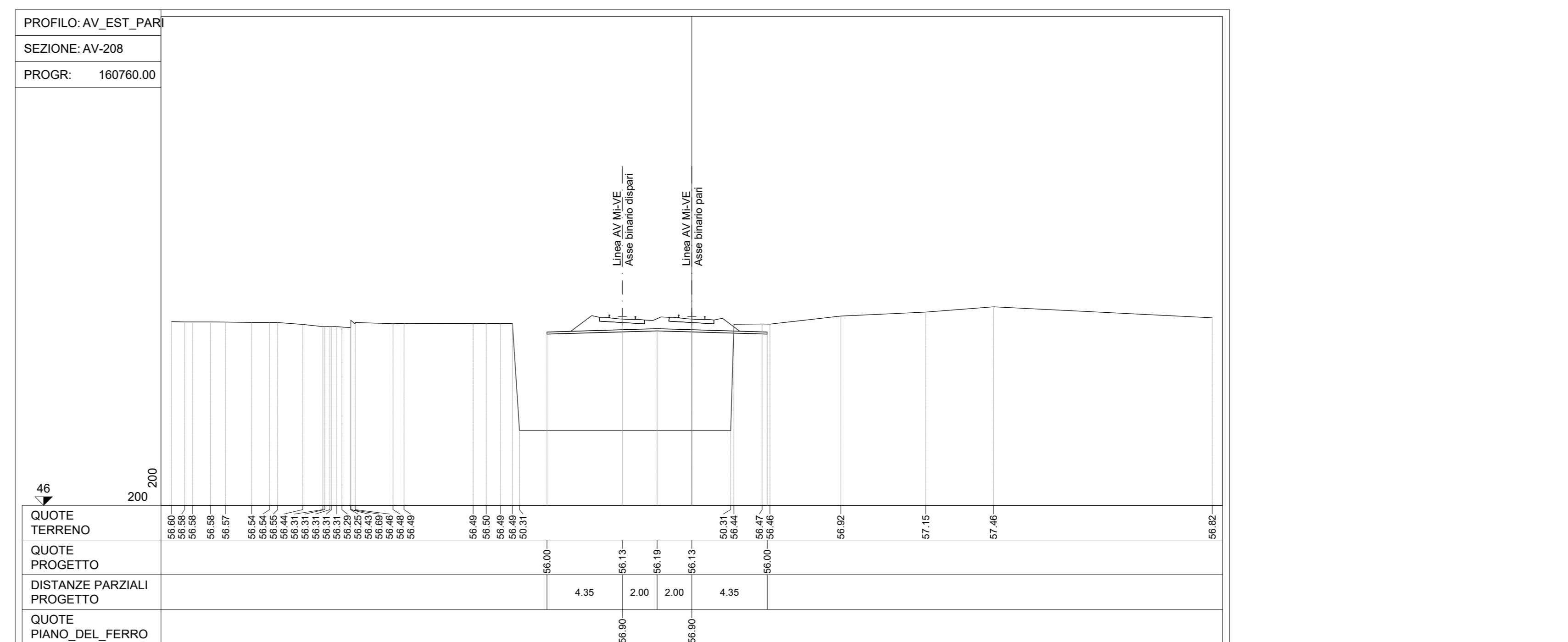
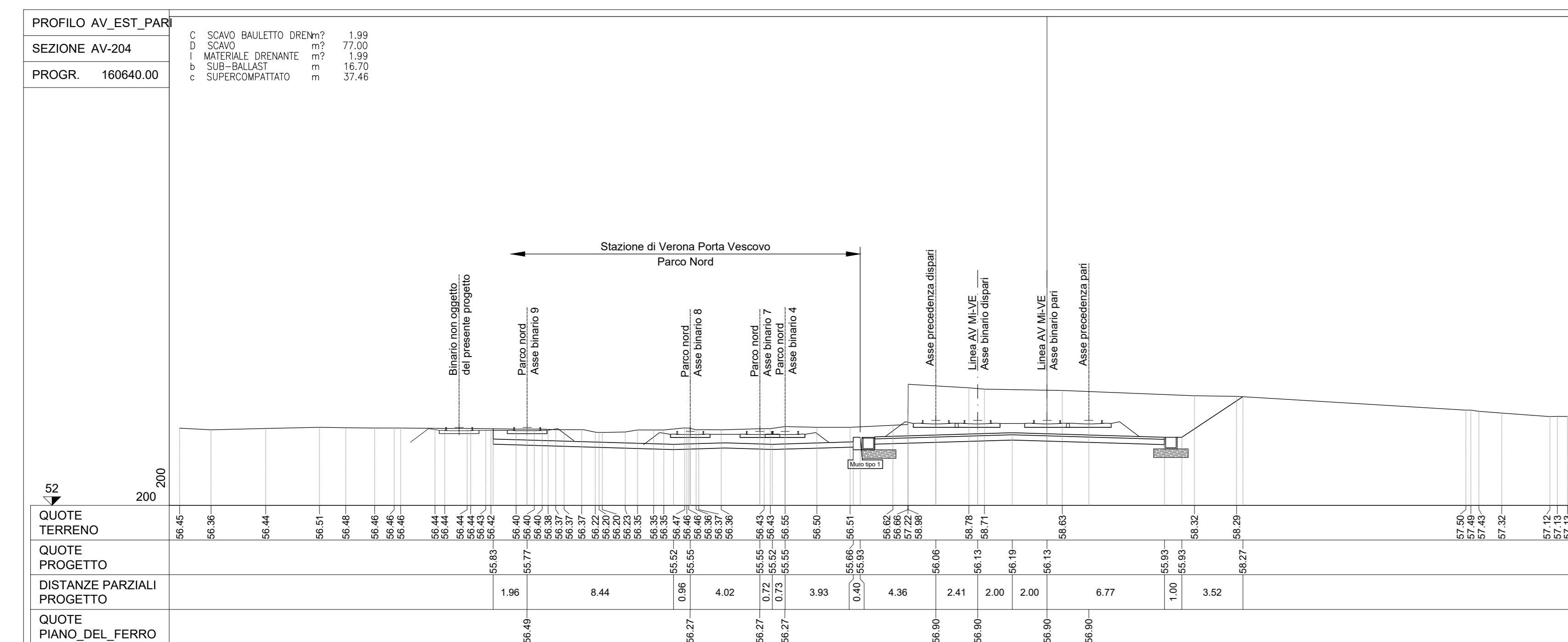
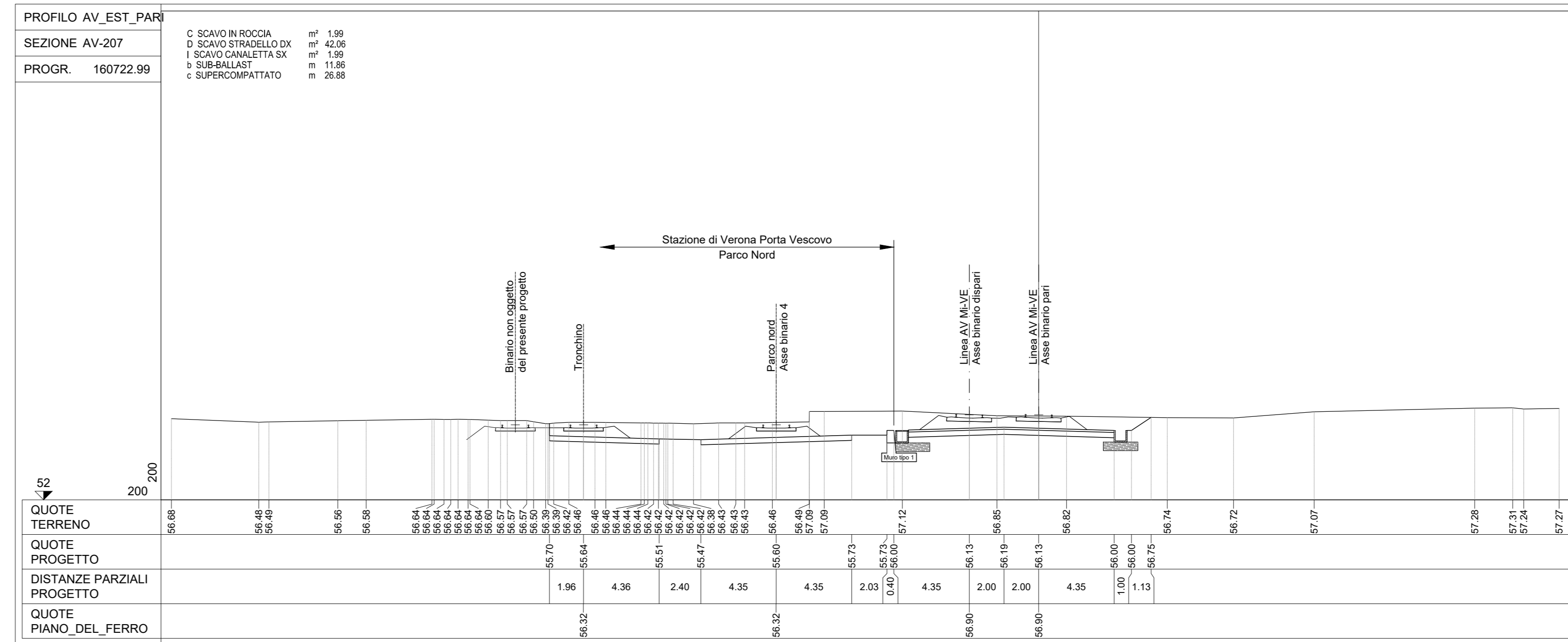
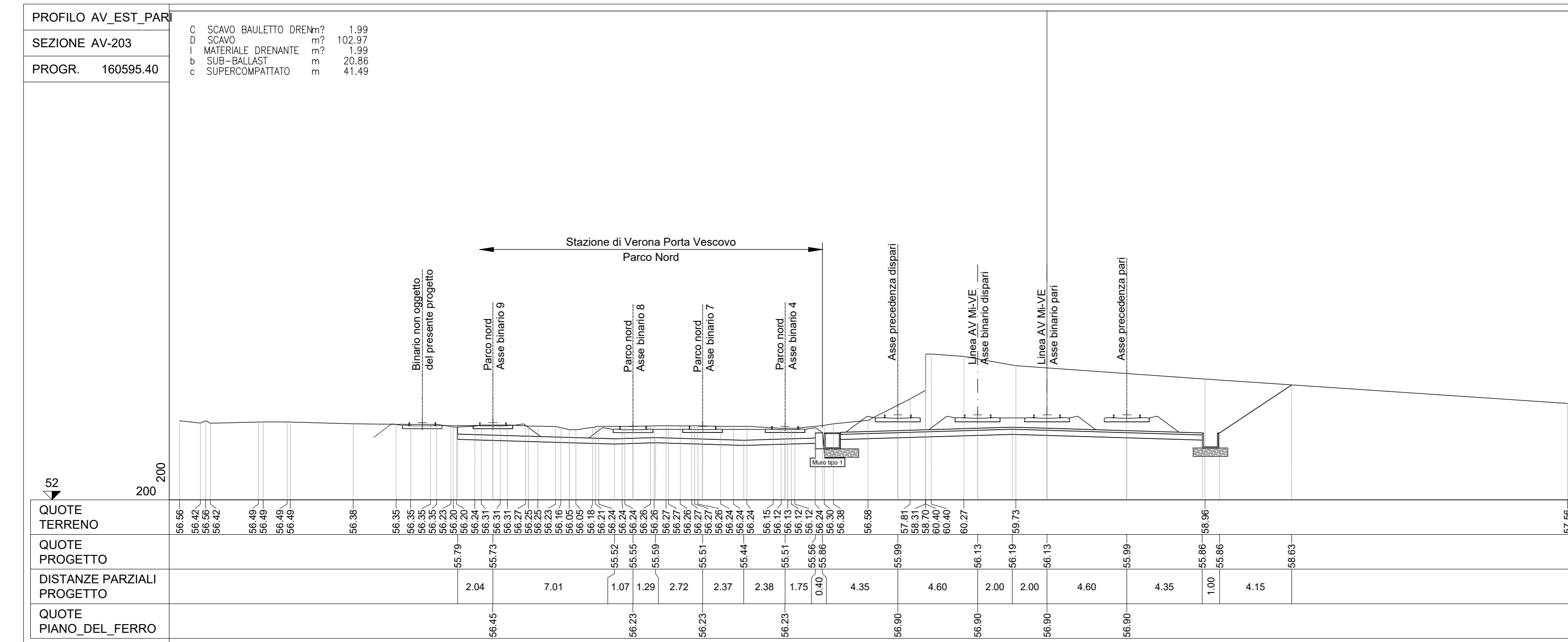
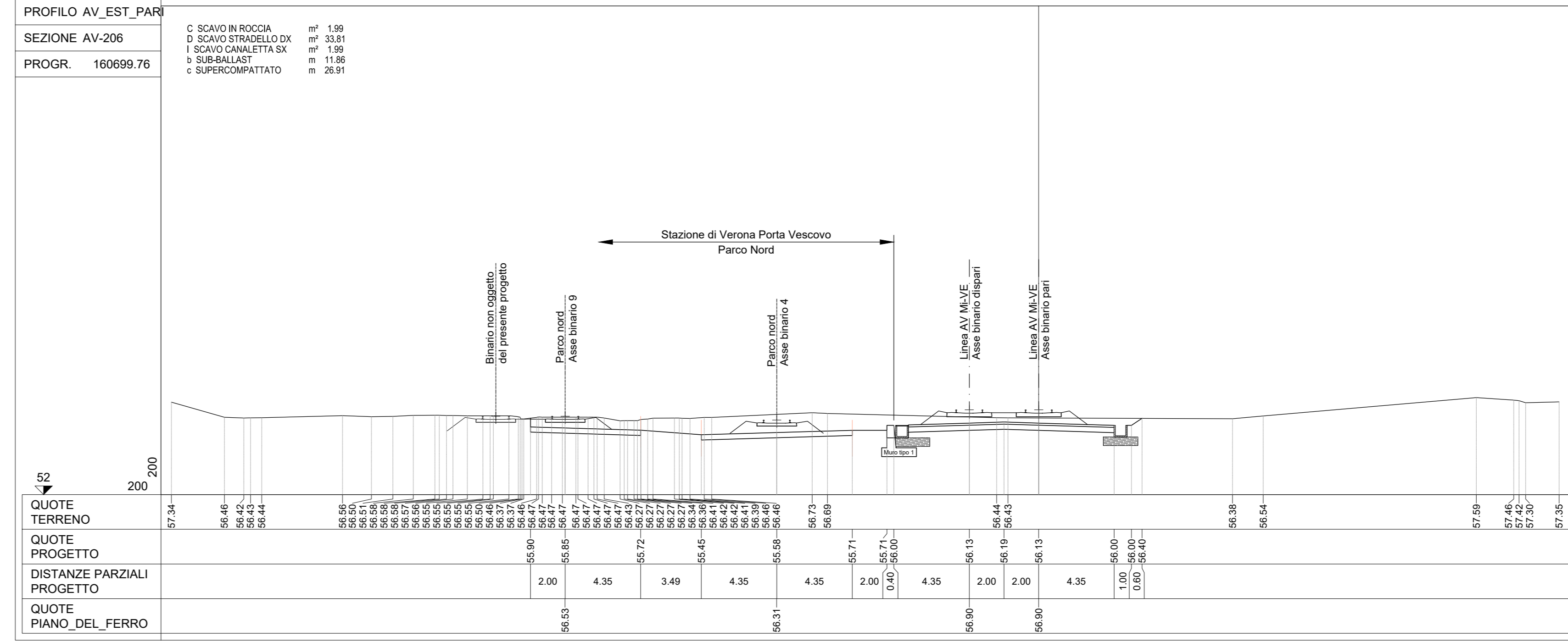
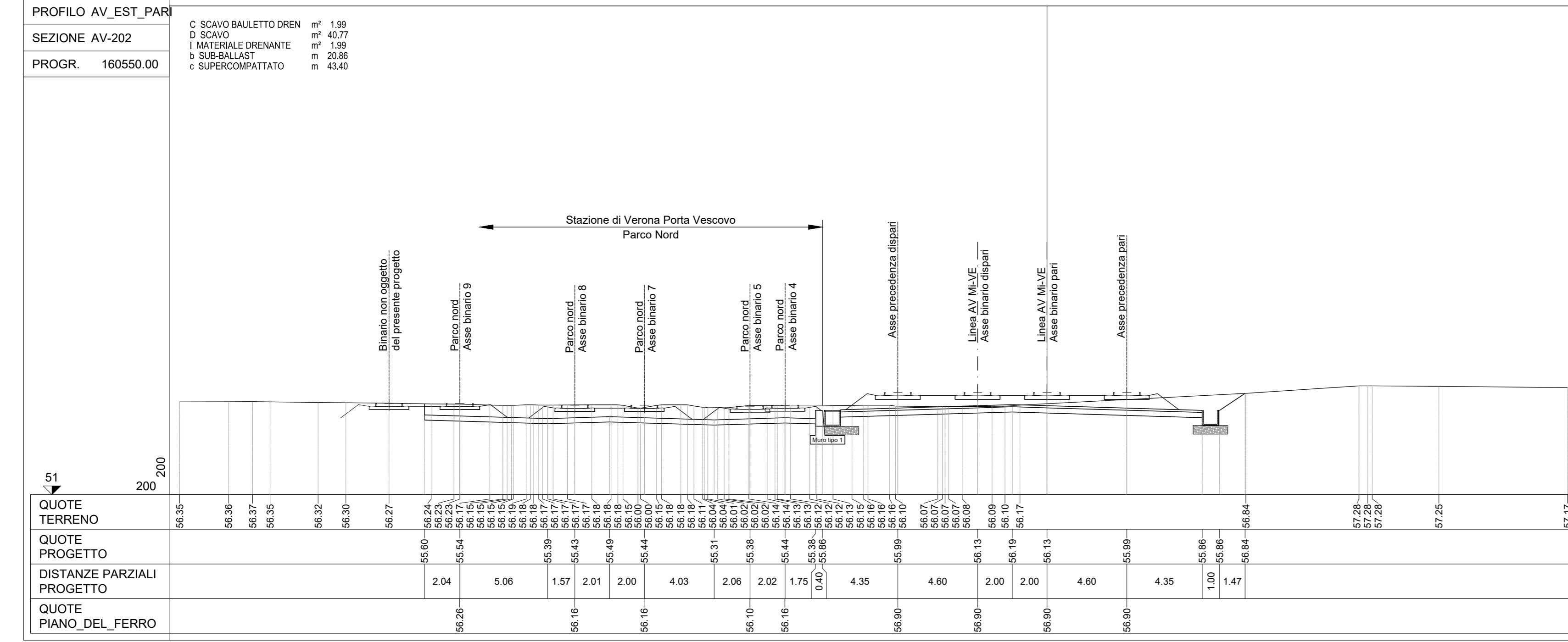
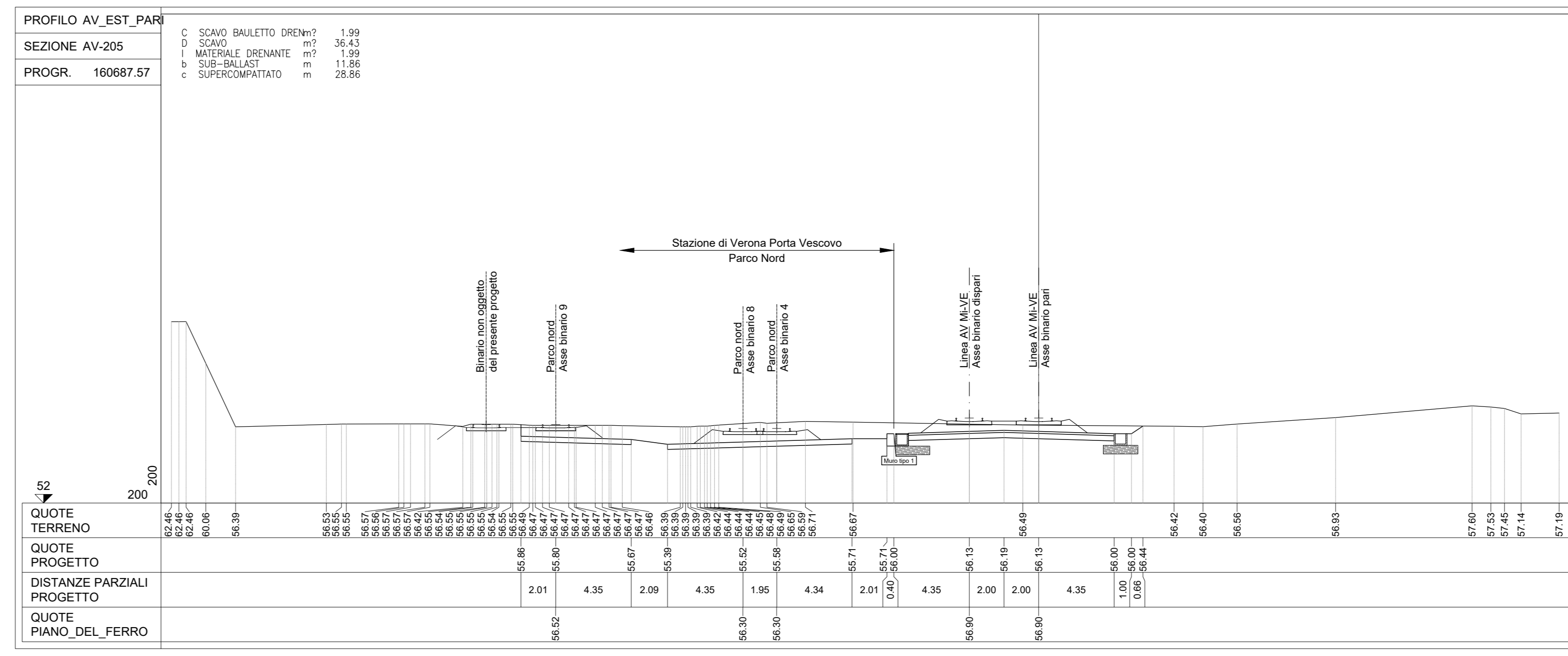
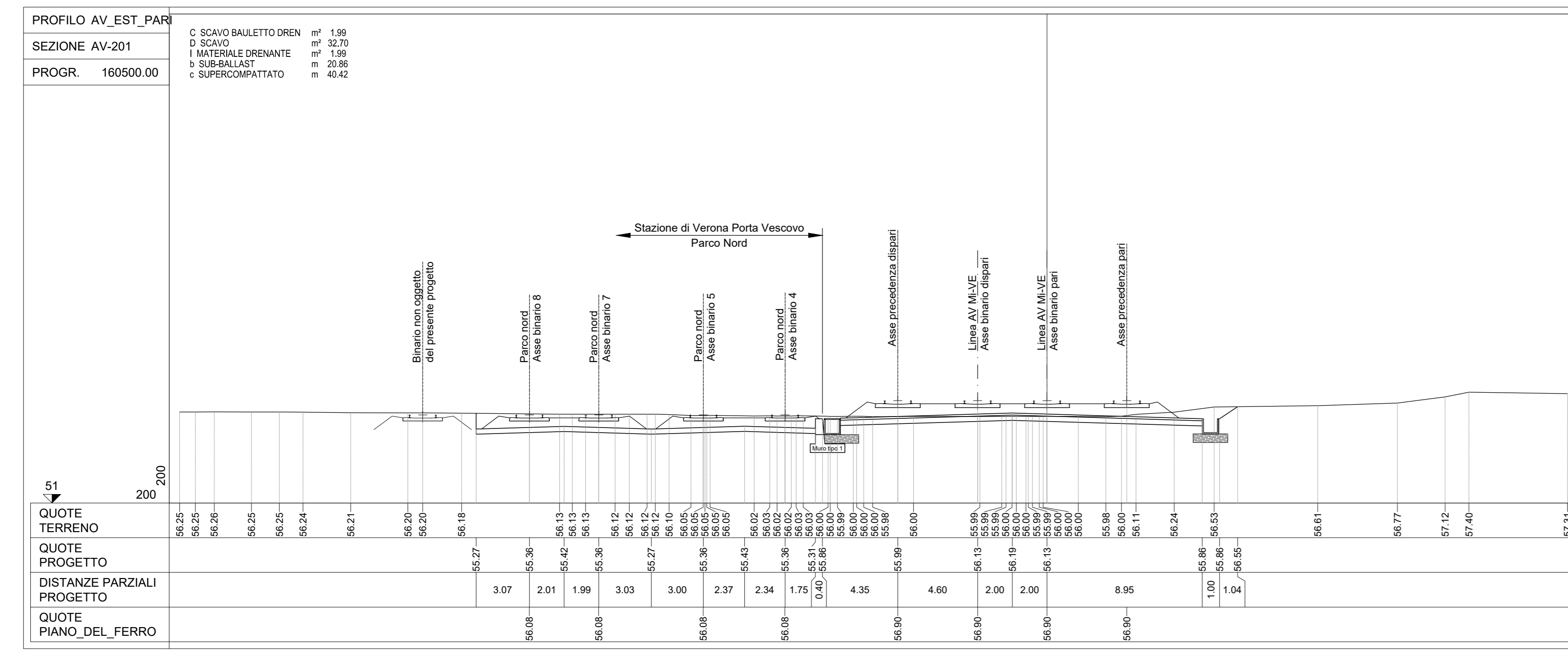


NOTE

- 1. Tutte le dimensioni sono espresse in m salvo dove diversamente specificato
3. Tutte le quote altimetriche sono espresse in m l.m.m.



COMMITTENTE: RFI
PROGETTAZIONE: ITALFERR

INFRASTRUTTURE FERROVIARIE STRATEGICHE DEFINITE DALLA LEGGE OBIETTIVO N. 443/01 e s.m.i.

U.O. PROGETTAZIONE INTEGRATA NORD
PROGETTO DEFINITIVO
LINEA AV/AC MILANO - VENEZIA
LOTTO FUNZIONALE TRATTA AV/AC VERONA-PADOVA
NODO AV/AC DI VERONA: INGRESSO EST

CORPO STRADALE FERROVIARIO
Sezioni trasversali
Linea AV/AC - Tav. 27

Table with columns: COMMESSA, LOTTO, FASE, ENTE, TIPO DOC., OPERA/DISCIPLINA, PROG., REV. Includes drawing code IN1A 20 D 26 W9 CS0000 027 A.

Table with columns: Revs., Descrizione, Redatto, Data, Verificato, Data, Approvato, Data, Autorizzato / Data. Includes revision history for Emissione Esecutiva.