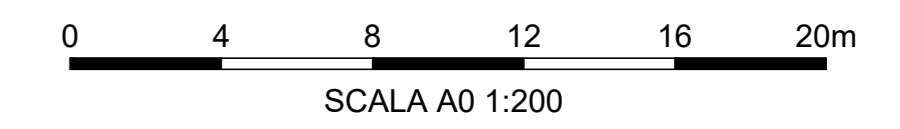
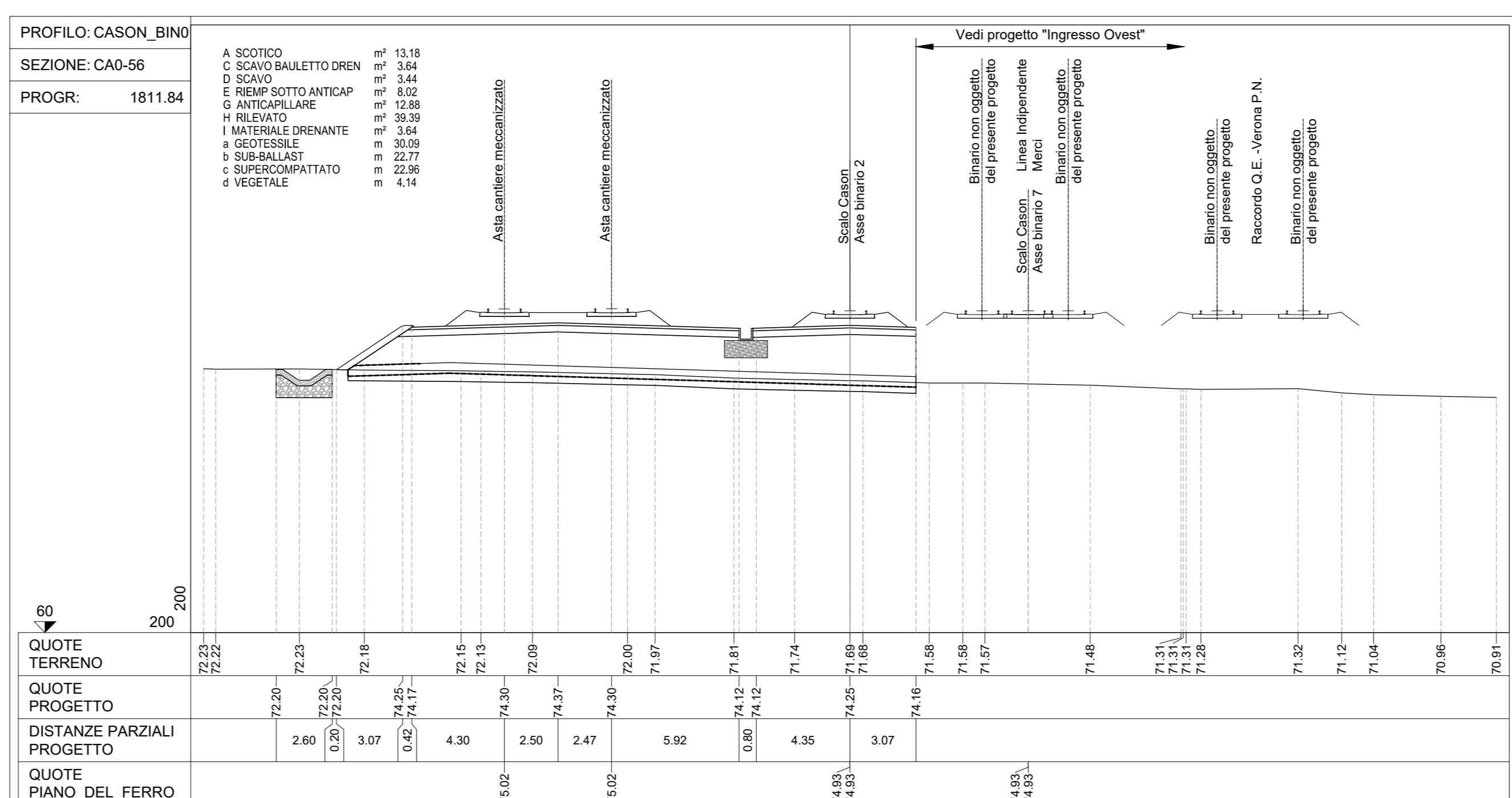
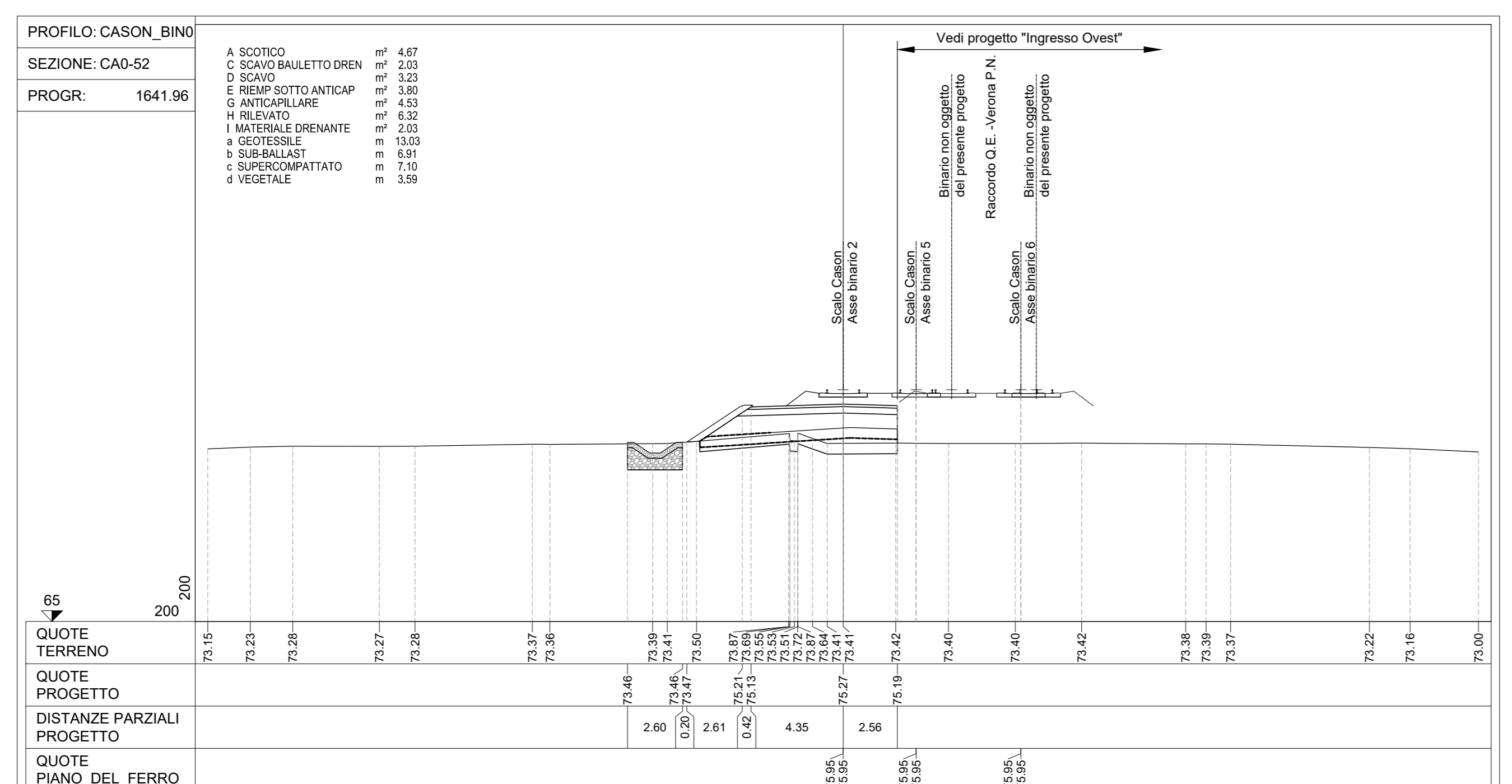
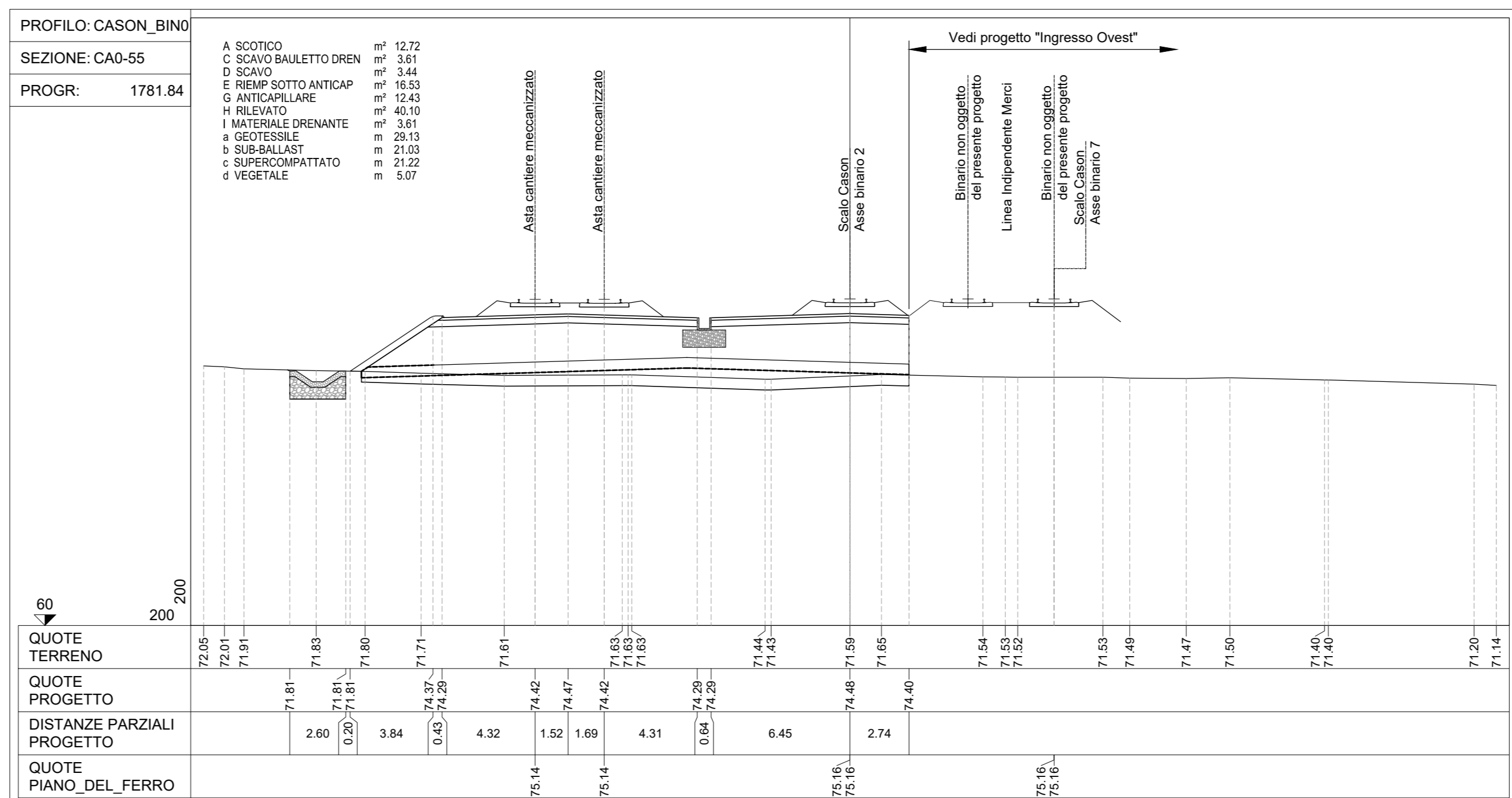
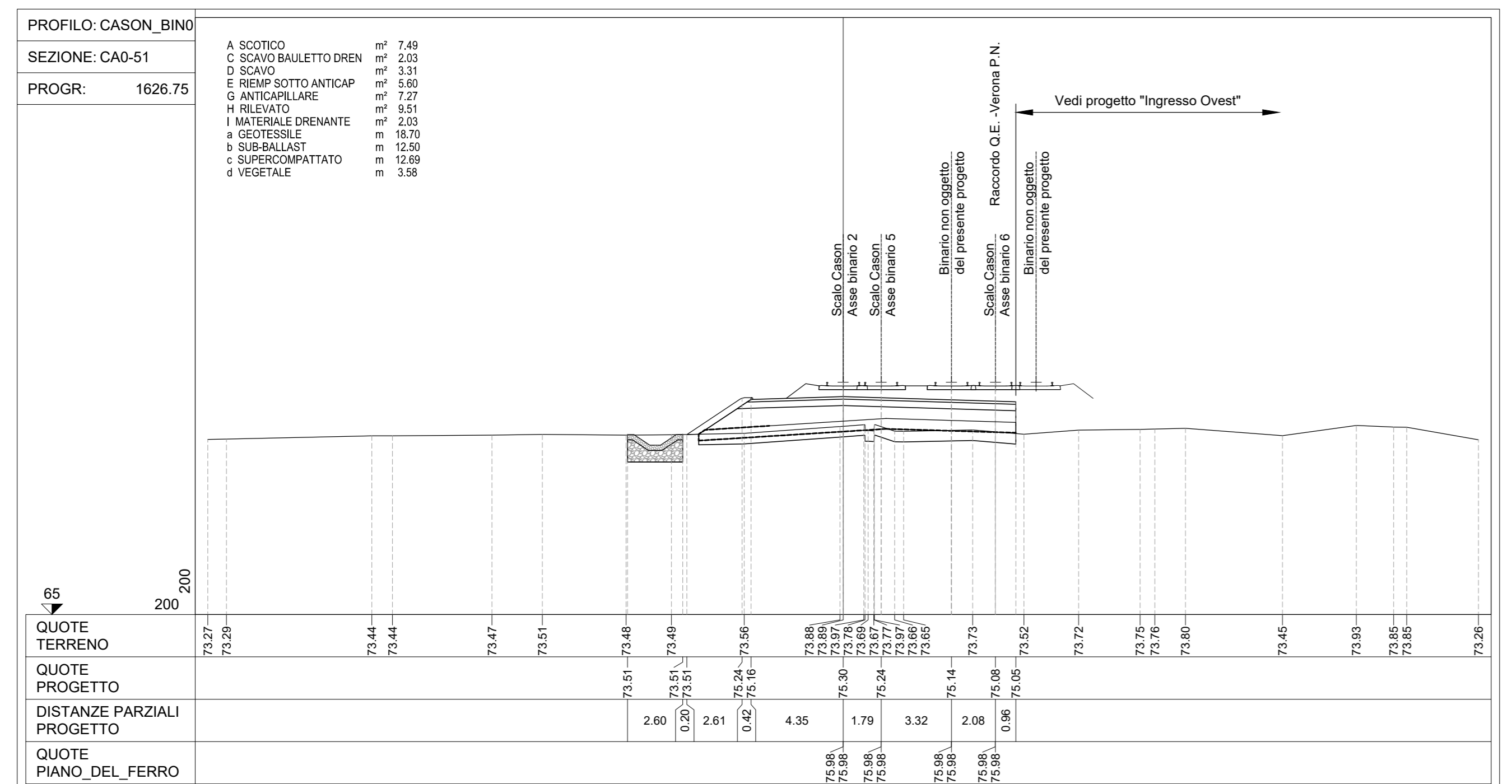
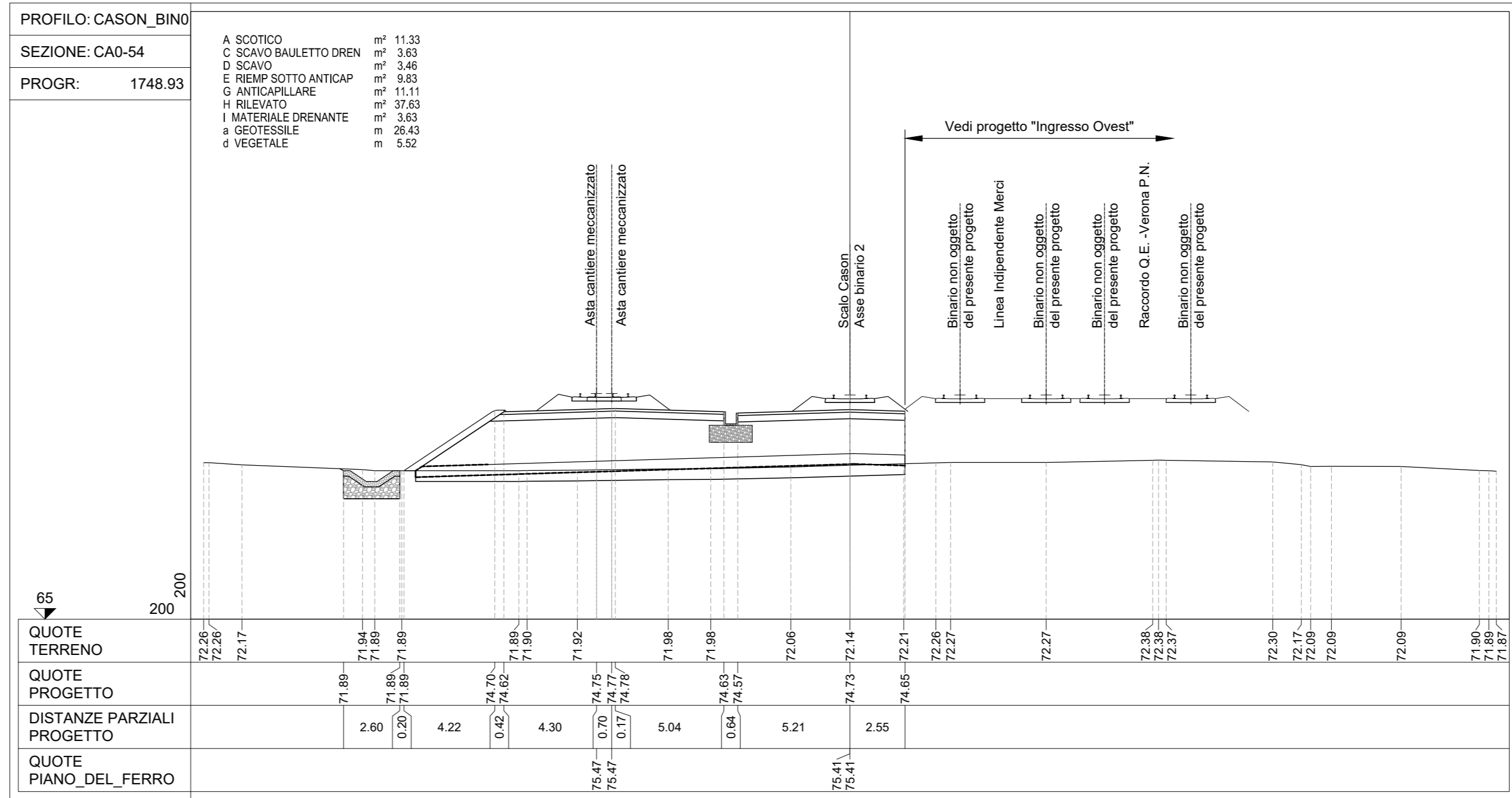
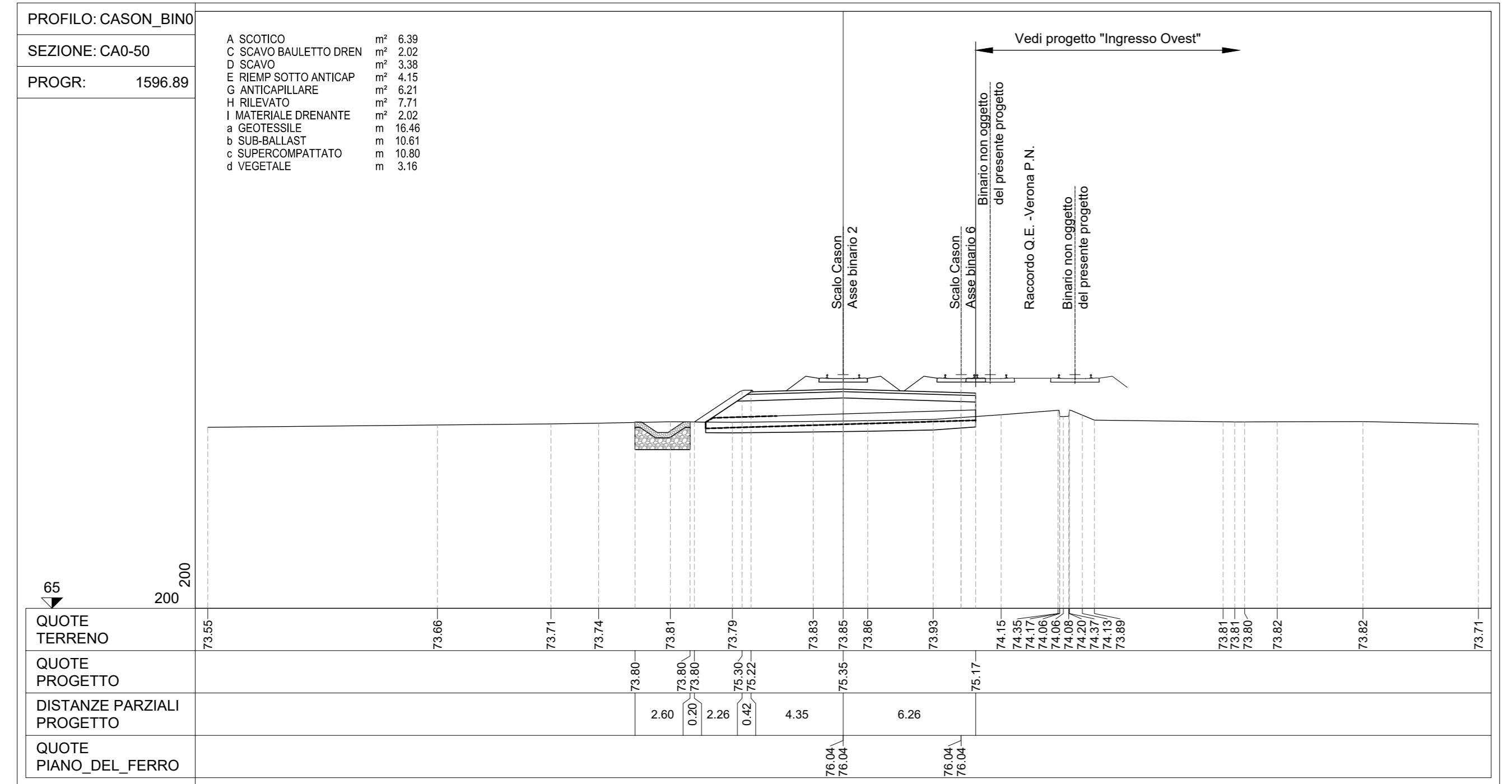
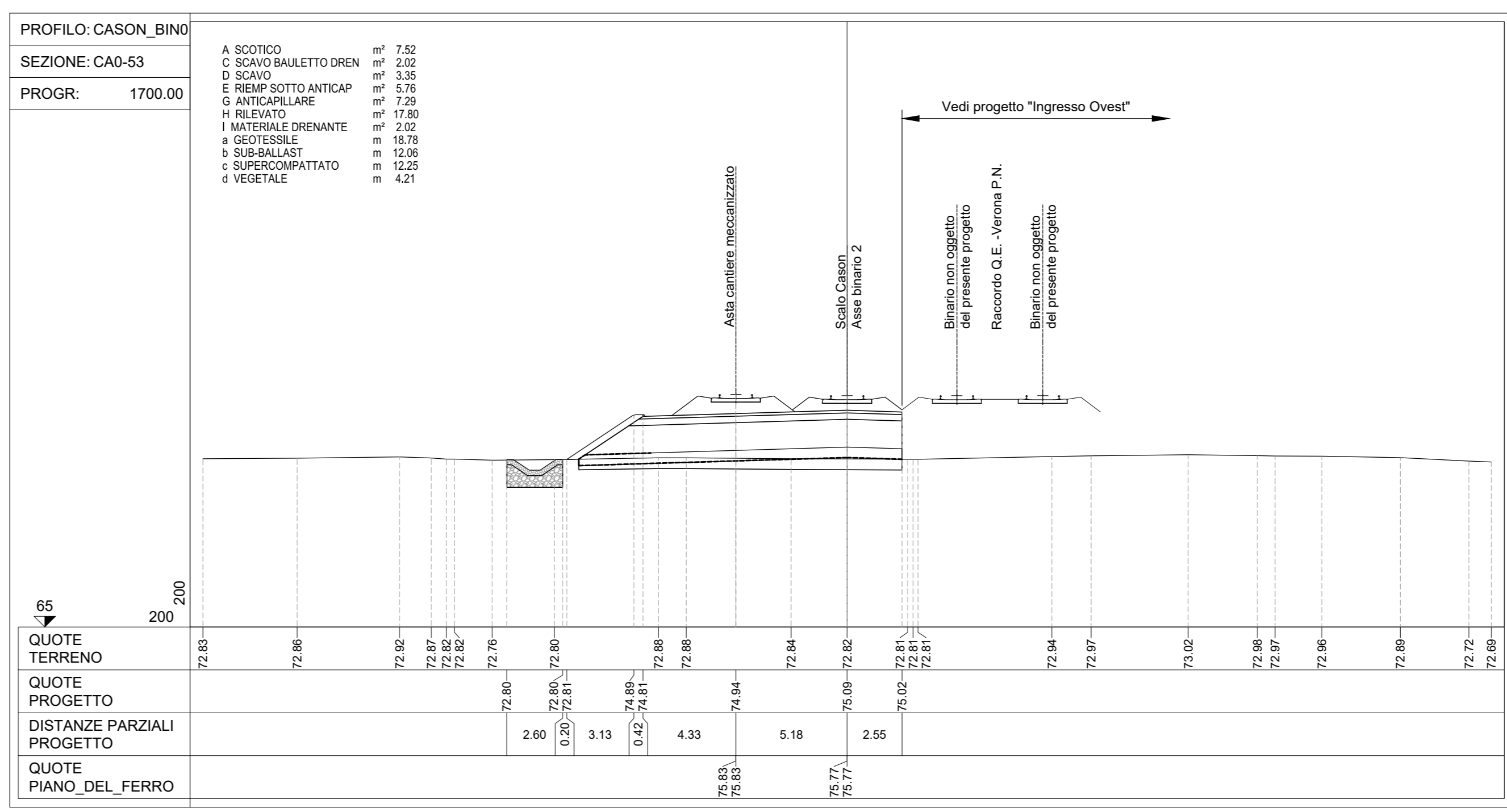
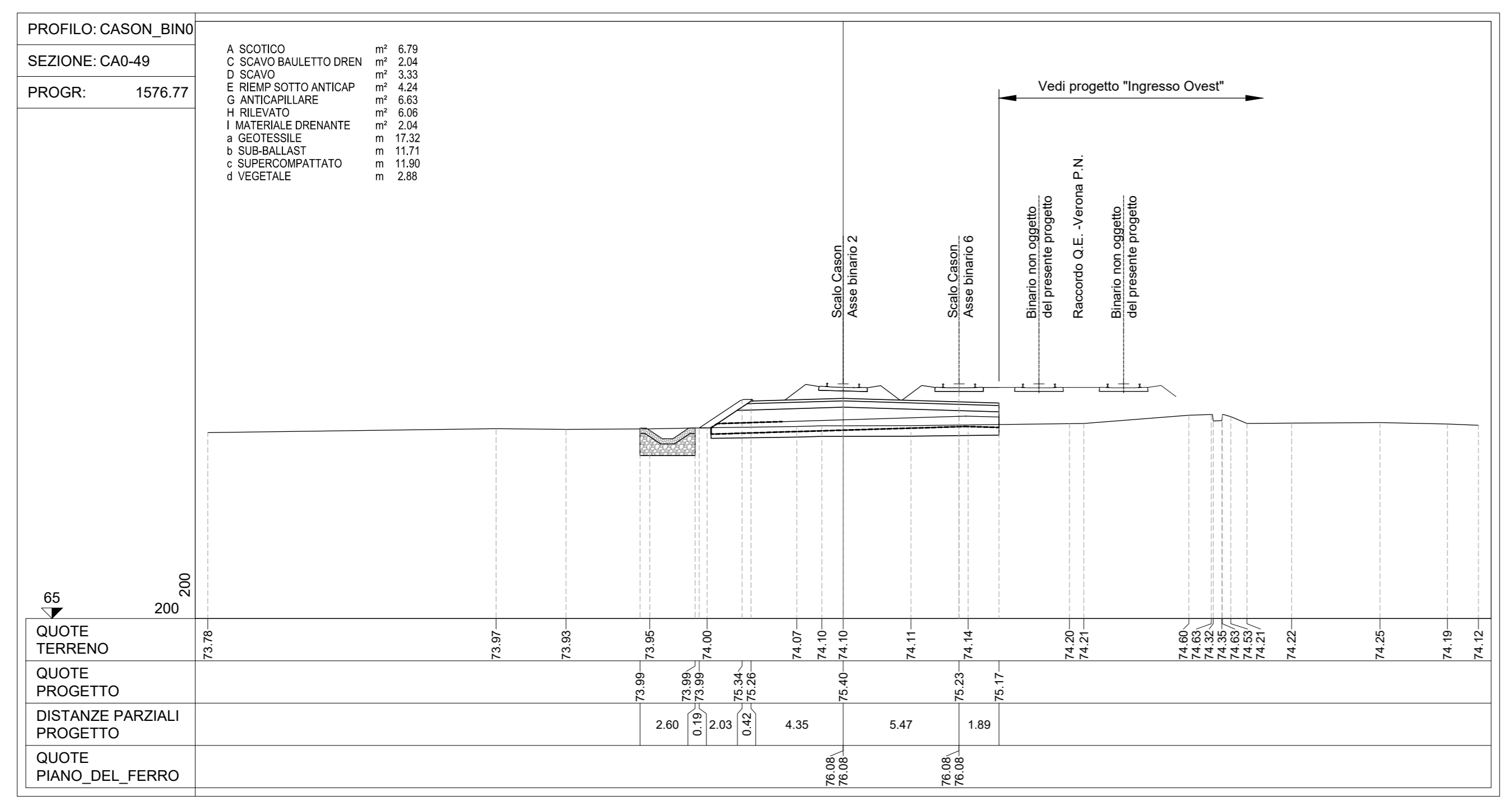


NOTE

- 1. Tutte le dimensioni sono espresse in m salvo dove diversamente specificato
- 3. Tutte le quote altimetriche sono espresse in m l.m.m.



COMMITTENTE:

PROGETTAZIONE:

INFRASTRUTTURE FERROVIARIE STRATEGICHE DEFINITE DALLA LEGGE OBIETTIVO N. 443/01 e s.m.i

U.O. PROGETTAZIONE INTEGRATA NORD
PROGETTO DEFINITIVO
 LINEA AV/AC MILANO - VENEZIA
 LOTTO FUNZIONALE TRATTA AV/AC VERONA-PADOVA
 NODO AV/AC DI VERONA: INGRESSO EST

CORPO STRADALE FERROVIARIO
 Sezioni trasversali
 Scalo Cason - Tav. 7

SCALA: 1:200

COMMESSA	LOTTO	FASE	ENTE	TIPO DOC.	OPERA/DISCIPLINA	PROGR.	REV.
IN1A	20	D	26	W9	CS0000	034	A

Rev.	Descrizione	Redatto	Data	Verificato	Data	Approvato	Data	Autorizzato / Data
A	Emissione Esecutiva	V. Riva	Gen. 2022	M. Rigo	Gen. 2022	C. Mazzocchi	Gen. 2022	A. Pirego Gen. 2022