

# NUOVA SE TERNA LATIANO 150/380 kV

REGIONE PUGLIA  
PROVINCIA di BRINDISI  
COMUNE di Latiano (BR)

PROGETTO DEFINITIVO  
Id AU 6JUCTX0

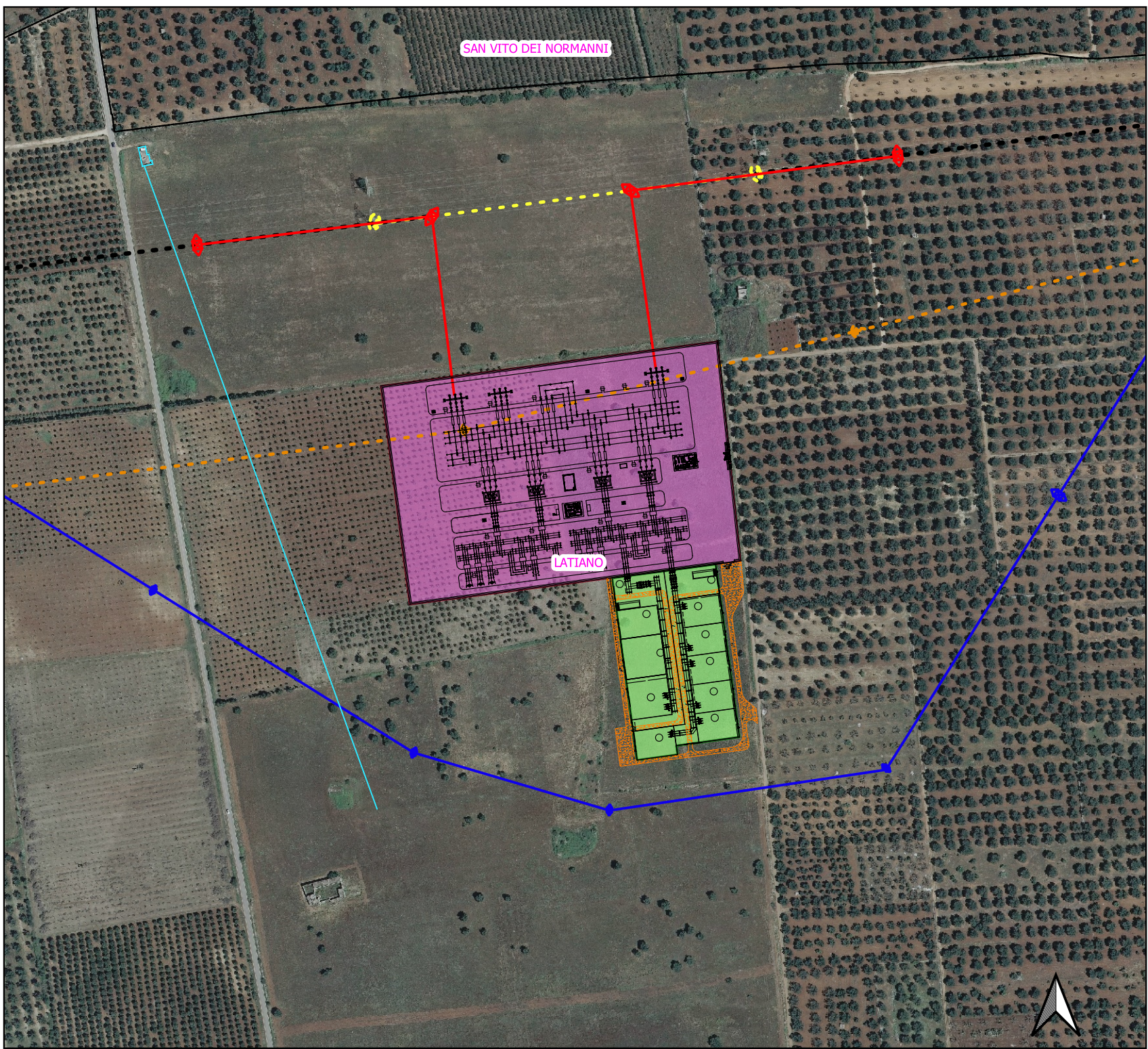
Tav.:	Titolo:
<b>05.SE</b>	<b>Inquadramento SE TERNA e area di condivisione Sottostazioni Utenti attivi su Ortofoto</b>

Scala:	Formato Stampa:	Codice Identificatore Elaborato
1:5.000 1:10.000 1:25.000	<b>A3</b>	<b>6JUCTX0_ElaboratoGrafico_0_05.SE</b>

Progettazione:	Committente:
<p><b>STC S.r.l.</b> Via V. M. STAMPACCHIA, 48 - 73100 Lecce Tel. +39 0832 1798355 fablo.calcarella@gmail.com - fablo.calcarella@ingpec.it Direttore Tecnico: Dott. Ing. Fabio CALCARELLA</p> <p><b>4IDEA S.r.l.</b> Via G. Brunetti, 50 - 73019 Trepuzzi tel +39 0832 760144 pec 4ideasrl@pec.it info@studioideassociati.it</p> 	<p><b>HEPV04 S.r.l.</b> Via Alto Adige, 160 - 38121 Trento tel +39 0461 1732700 - fax +39 0461 1732799 e.mail: info@heliopolis.eu - pec: hepv04srl@pec.it P.Iva 02523220222</p> <p>SOCIETA' DEL GRUPPO </p> 

Data	Motivo della revisione:	Redatto:	Controllato:	Approvato:
Settembre 2020	Prima emissione	STC	FC	HEPV04 S.r.l.













SAN VITO DEI NORMANNI

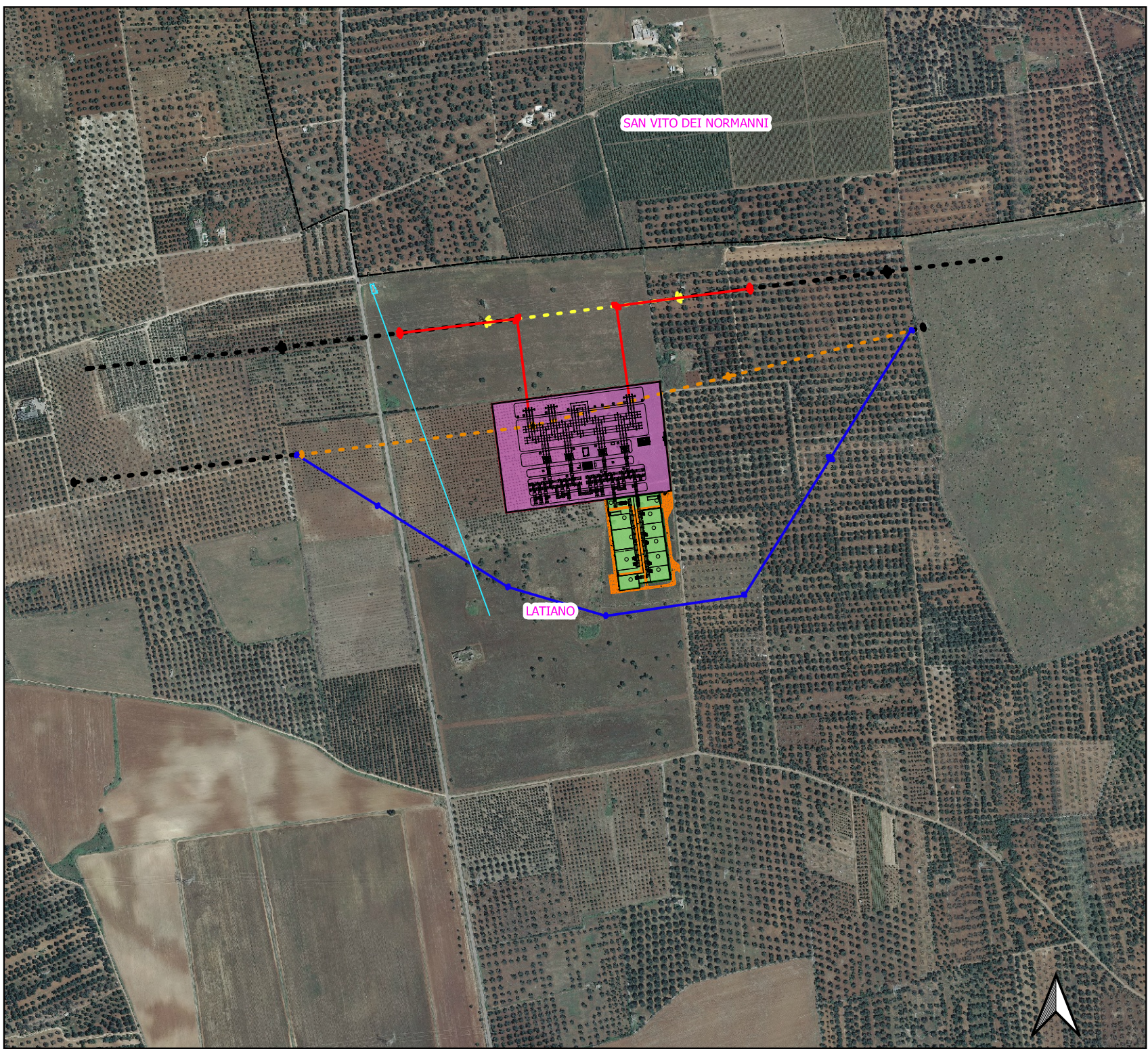
LATIANO

### LEGENDA

-  Nuova SE Terna
-  Area Stazioni Utente
-  Elettrodotto esistente
-  Rete Gas
-  Tratto elettrodotto da demolire 150 kV
-  Tratto elettrodotto da demolire 380 kV
-  Variante elettrodotto 150 kV
-  Variante elettrodotto 380 kV





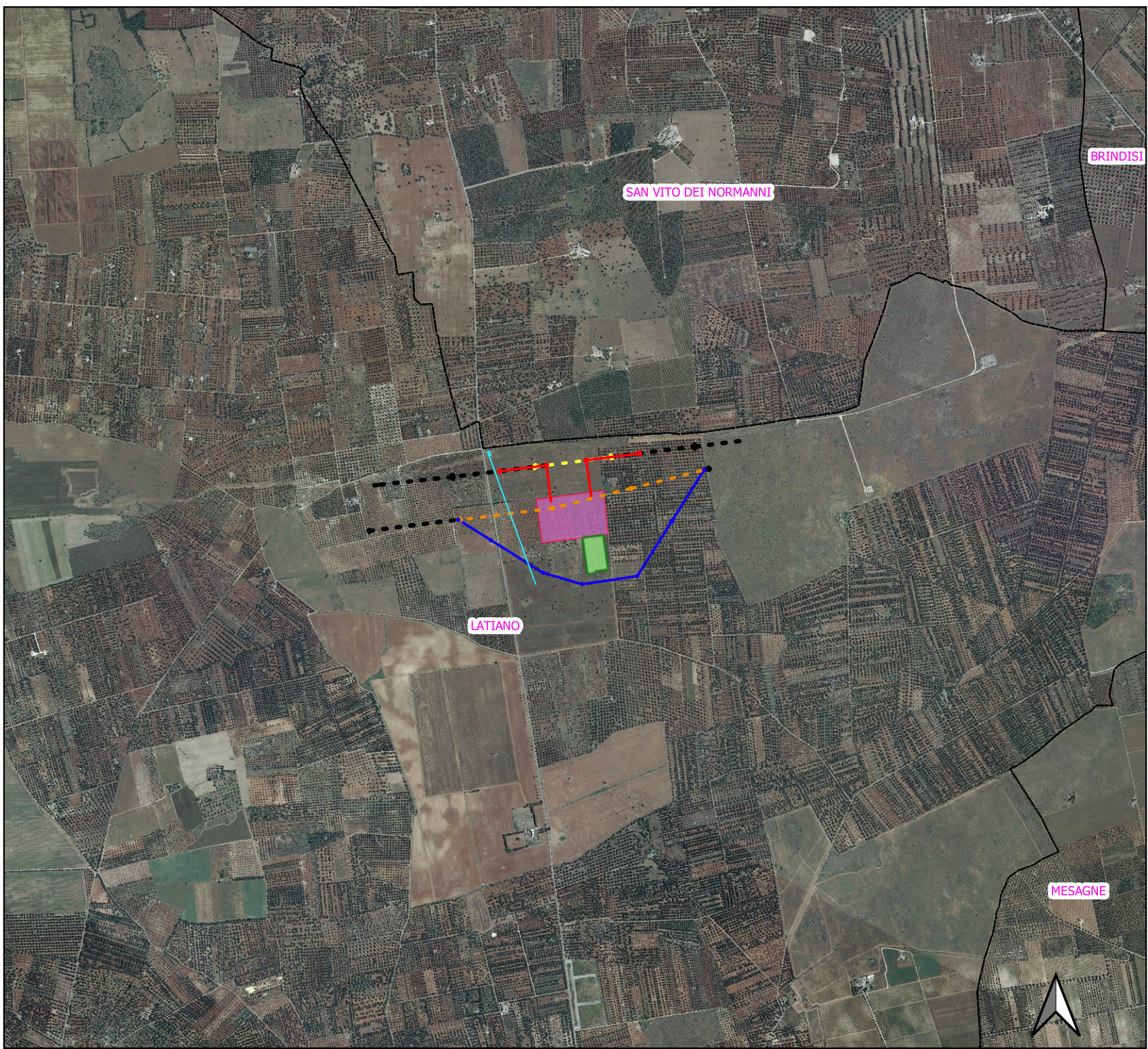


**LEGENDA**









- Nuova SE Terna
- Area Stazioni Utente
- Limiti comunali
- Elettrodotto esistente
- Rete Gas
- Tratto elettrodotto da demolire 150 kV
- Tratto elettrodotto da demolire 380 kV
- Variante elettrodotto 150 kV
- Variante elettrodotto 380 kV







**LEGENDA**

-  Nuova SE Terna
-  Area Stazioni Utente
-  Limiti comunali
-  Elettrodotto esistente
-  Rete Gas
-  Tratto elettrodotto da demolire 150 kV
-  Tratto elettrodotto da demolire 380 kV
-  Variante elettrodotto 150 kV
-  Variante elettrodotto 380 kV