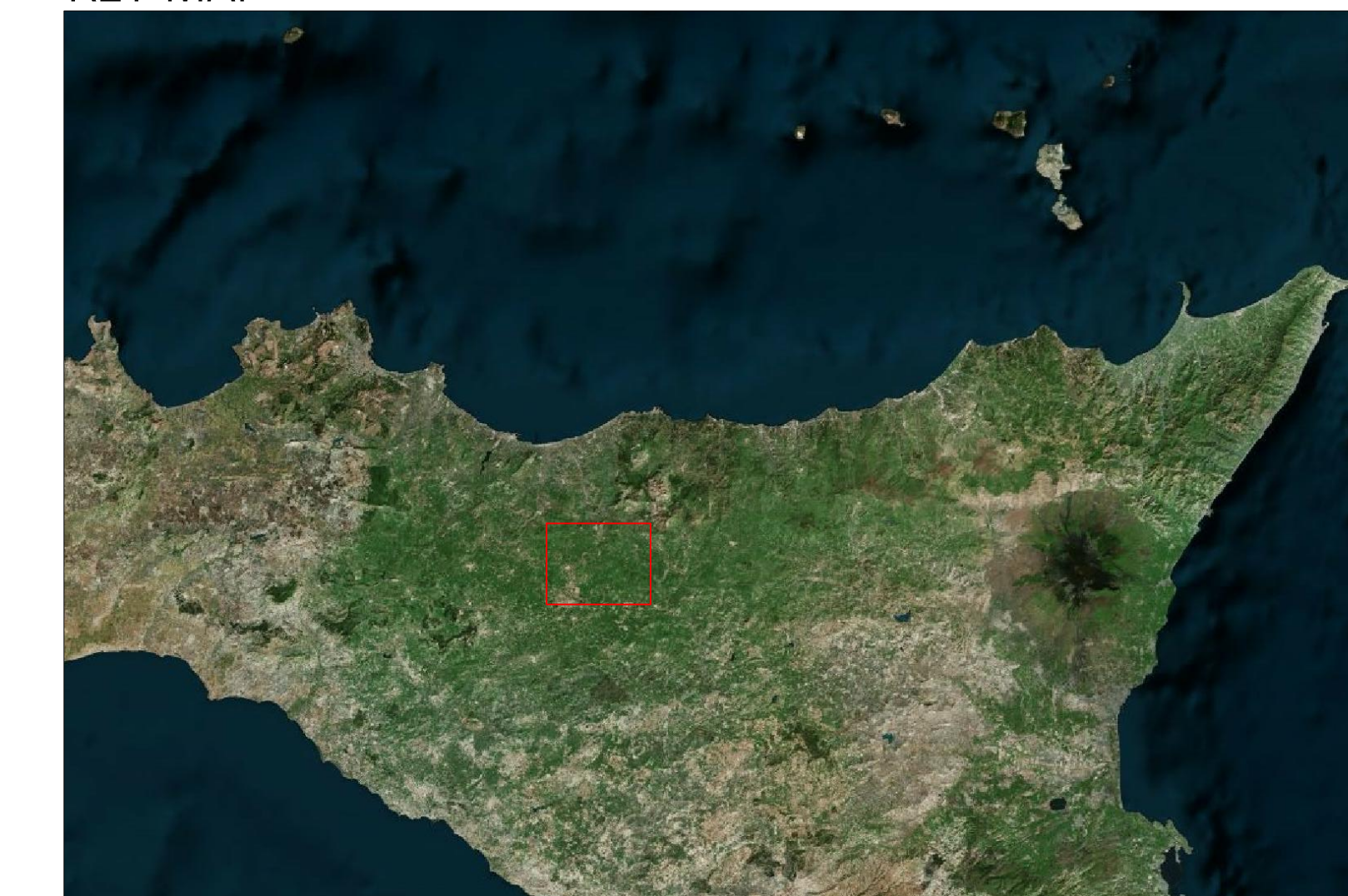
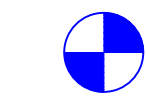
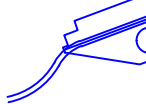




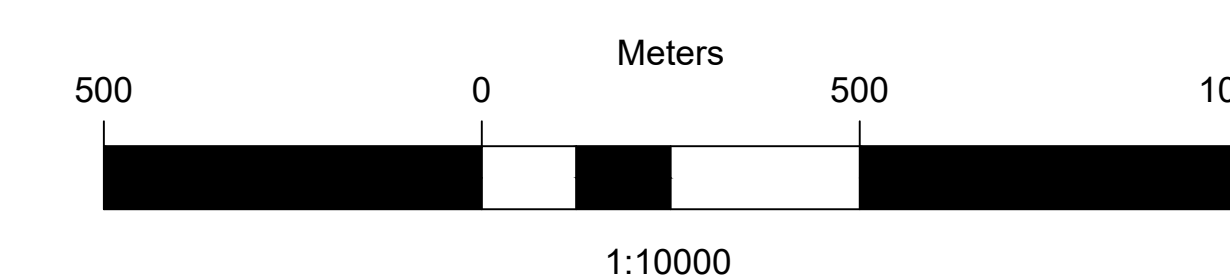


KEY MAP



LEGENDA

-  Aerogeneratori in progetto
-  Strade e piazzole in progetto
-  Cavidotti interrati 33 kV
-  Strade pubbliche afferenti all'impianto
-  Area di studio (buffer 1 km)
-  Punti di accesso all'impianto



00		2020.11.20		Prima emissione		N. Nuvoli		M. Testi		L. Laezza			
REV.	DATE	DESCRIPTION	PREPARED	CHECKED	APPROVED								
		PROJECT: <b>INTEGRALE RICOSTRUZIONE DELL'IMPIANTO EOLICO DI CALTAVUTURO 2</b>											
		FILE NAME: GRE.EEC.D.73.IT.W.11633.00.016.00 - Inquadramento impianto eolico su CTR		CLASSIFICATION: <b>PUBLIC</b>		FORMAT: <b>A0</b>		SCALE: <b>1:10.000</b>		PLOT SCALE: <b>1:1</b>		SHEET: <b>3 di 4</b>	
Engineering & Construction <b>EGP VALIDATION</b>		UTILIZATION SCOPE: <b>BASIC DESIGN</b>		TITLE: <b>Inquadramento impianto eolico su CTR Stato di fatto - Stato di progetto</b>									
VALIDATED BY: <b>Isidoro</b>		CHECKED BY: <b>Balorini</b>		EGP CODE:									
VERIFIED BY:		COLLABORATORS:		GRE.EEC.D.73.IT.W.11633.00.016.00									