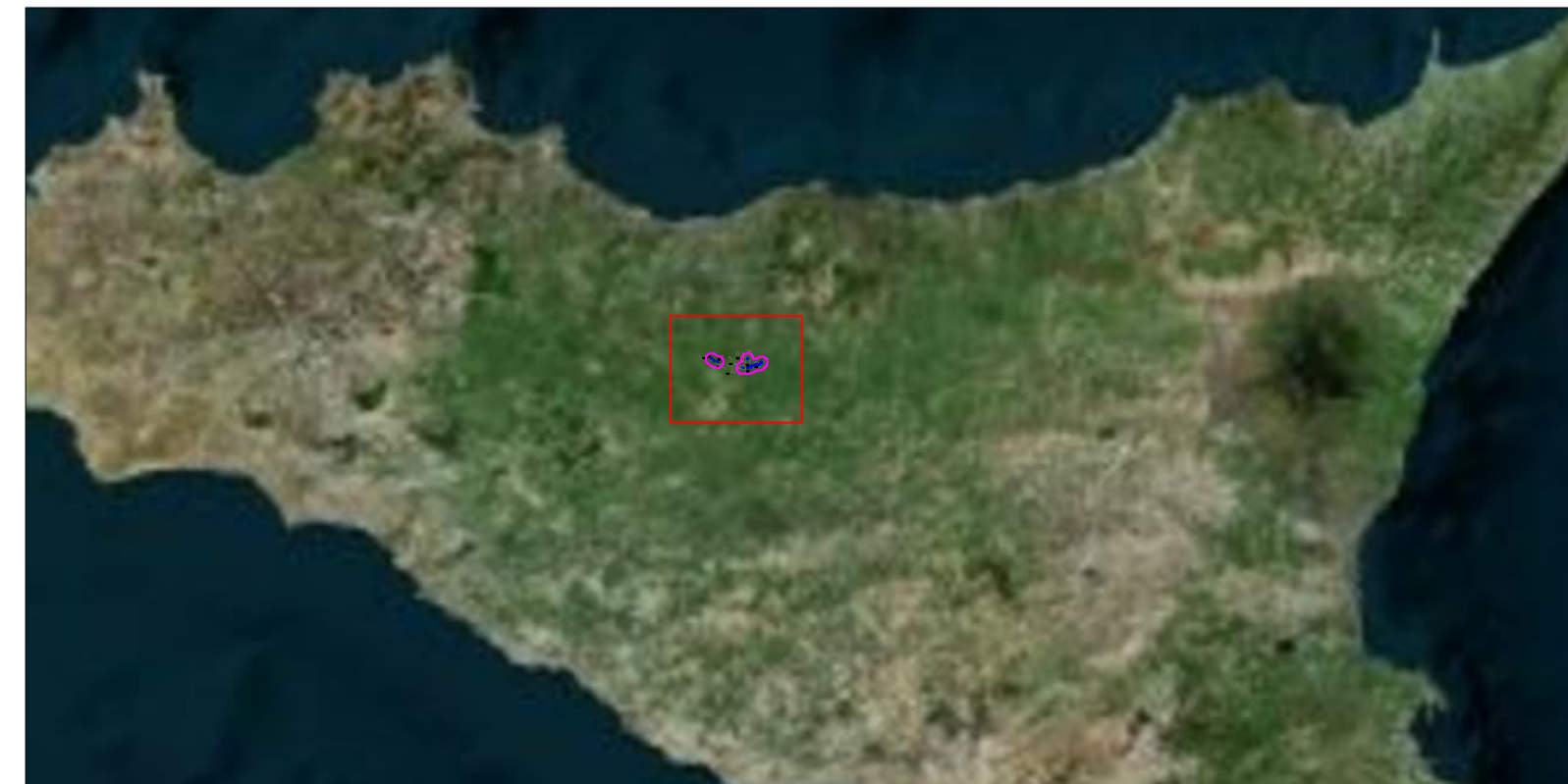




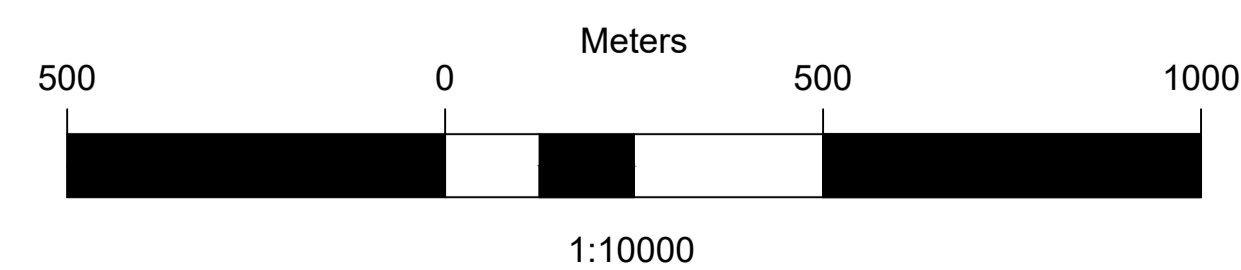


KEY MAP



LEGENDA

-  Aerogeneratori in progetto
-  Strade e piazzole in progetto
-  Recettori Sensibili
-  Area di studio (Buffer 1000 m)



| | | | | | |
|-------------------------------|------------|---|--|------------------------|------------------------|
| 01 | 2020.08.26 | Integrati commenti | N. Novati | N. Novati | L. Lavazza |
| 00 | 2020.07.10 | Prima emissione | M. Terzi | N. Novati | L. Lavazza |
| REV. | DATE | DESCRIPTION | PREPARED | CHECKED | APPROVED |
| CONTRACTORS LOGO | | PROJECT: INTEGRALE RICOSTRUZIONE DELL'IMPIANTO EOLICO DI CALTAVUTURO 2 | | | |
| enel | | FILE NAME: GRE.EEC.D.73.IT.W.11633.05.001.01 - Individuazione recettori su ortofoto | | | |
| Engineering & Construction | | CLASSIFICATION: PUBLIC | FORMAT: A1 | SCALE: 1:10.000 | PLOT SCALE: - |
| EGP VALIDATION | | UTILIZATION SCOPE: BASIC DESIGN | TITLE: Individuazione recettori su ortofoto | | |
| VALIDATED BY: Iacifano | | EGP CODE | | | |
| VERIFIED BY: Magri | | GROUP: GREEN | FUNCTION: D73 | ISSUER: ITW | COUNTRY: 11633 |
| COLLABORATORS: Lenci | | TEC: 05 | PLANT: 30 | SYSTEM: 50 | PROGRESSIVE: 01 |
| | | REVISION: 101 | | | |