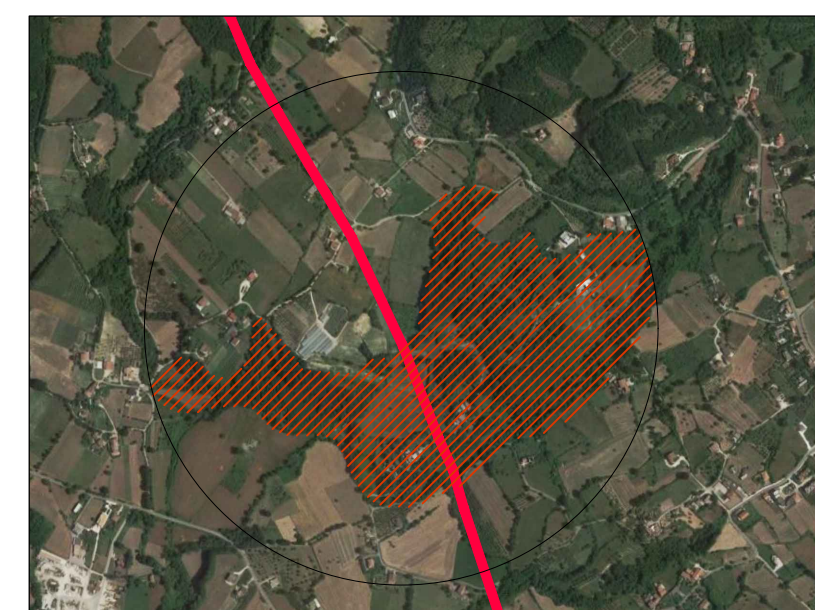
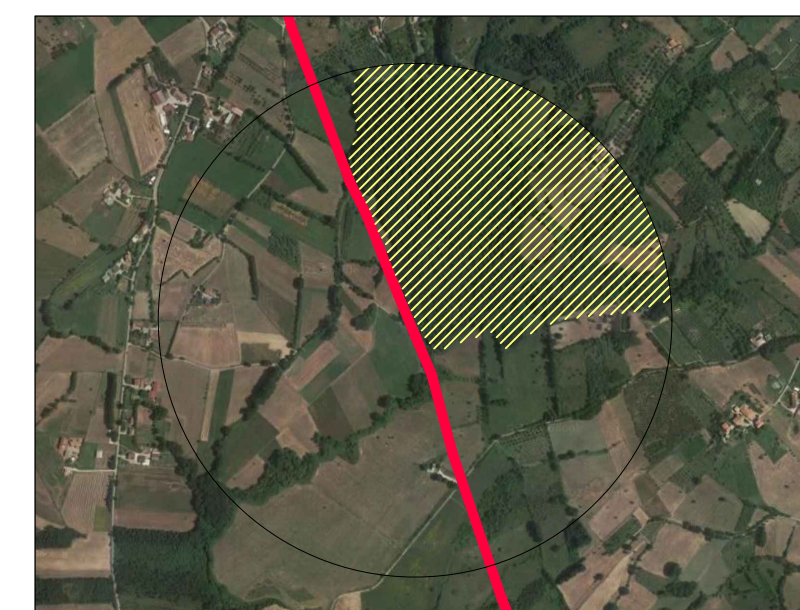


INTERFERENZA N.1



INTERFERENZA N.2



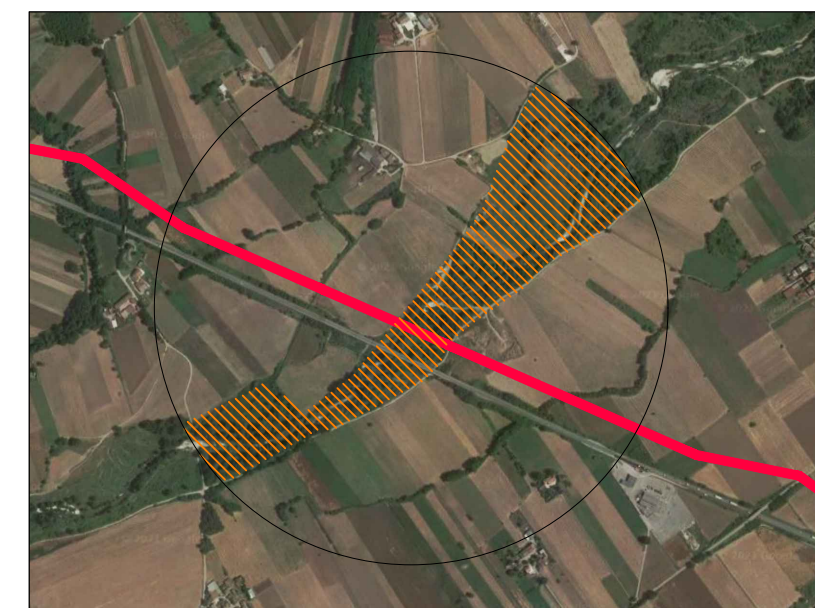
INTERFERENZA N.3



INTERFERENZA N.4



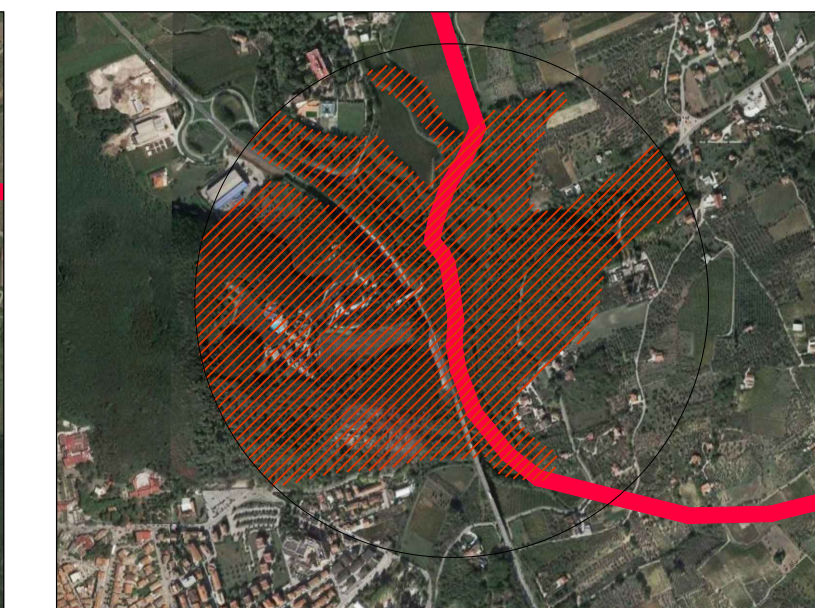
INTERFERENZA N.5



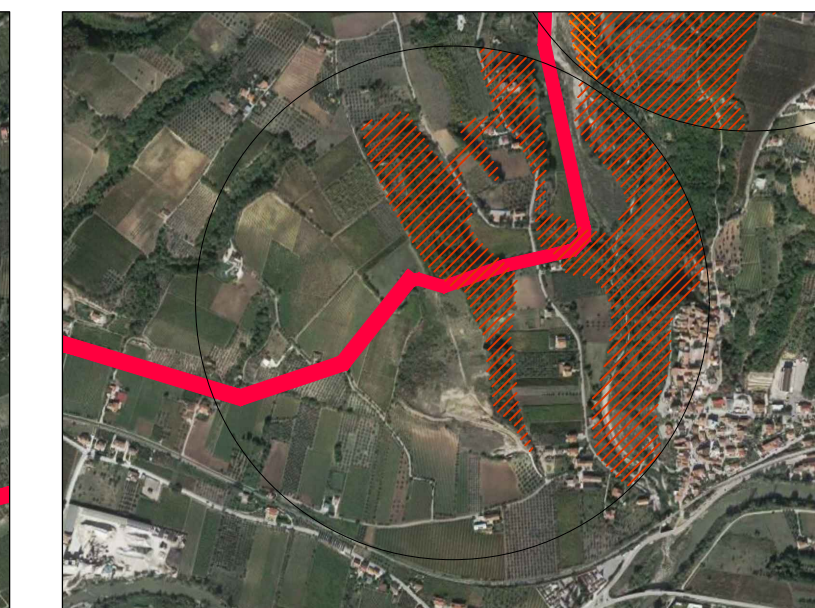
INTERFERENZA N.6



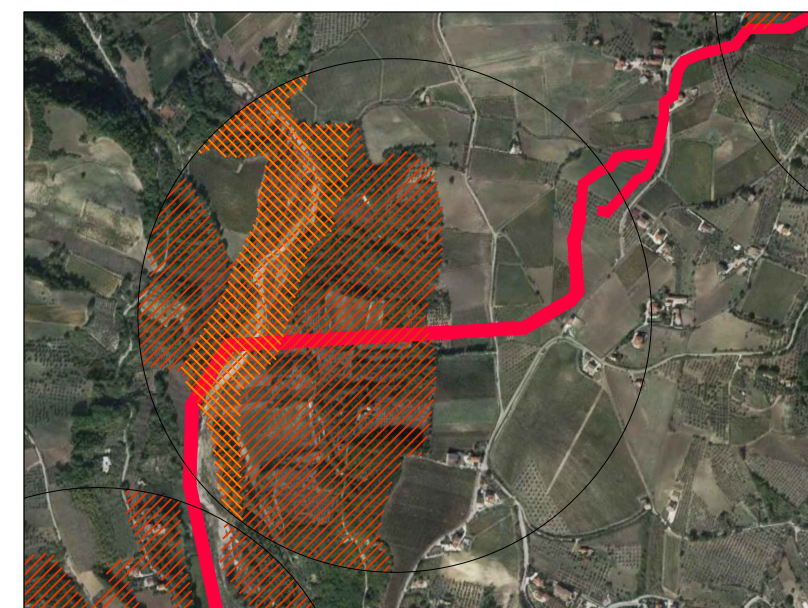
INTERFERENZA N.7



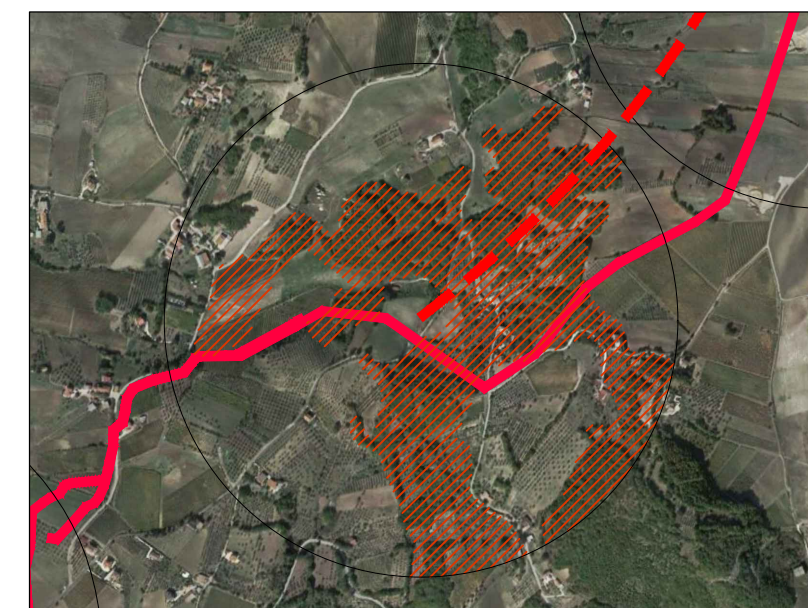
INTERFERENZA N.8



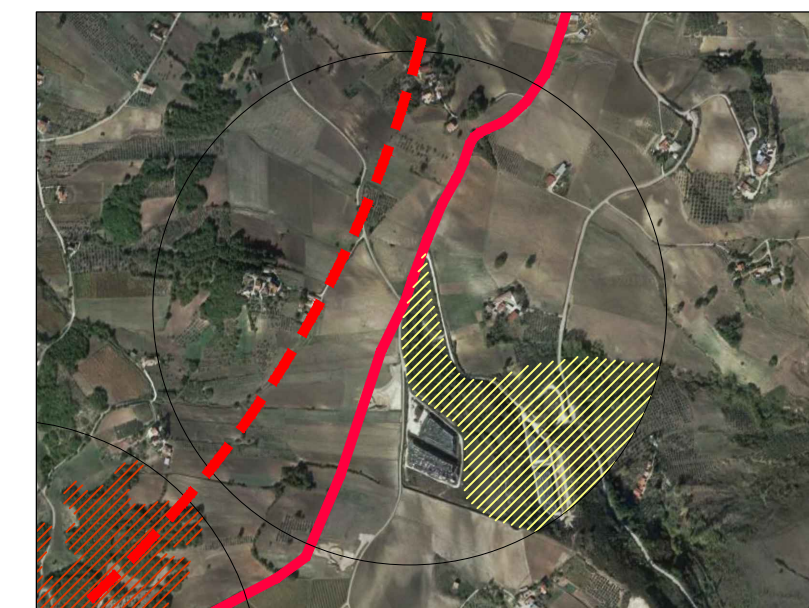
INTERFERENZA N.9



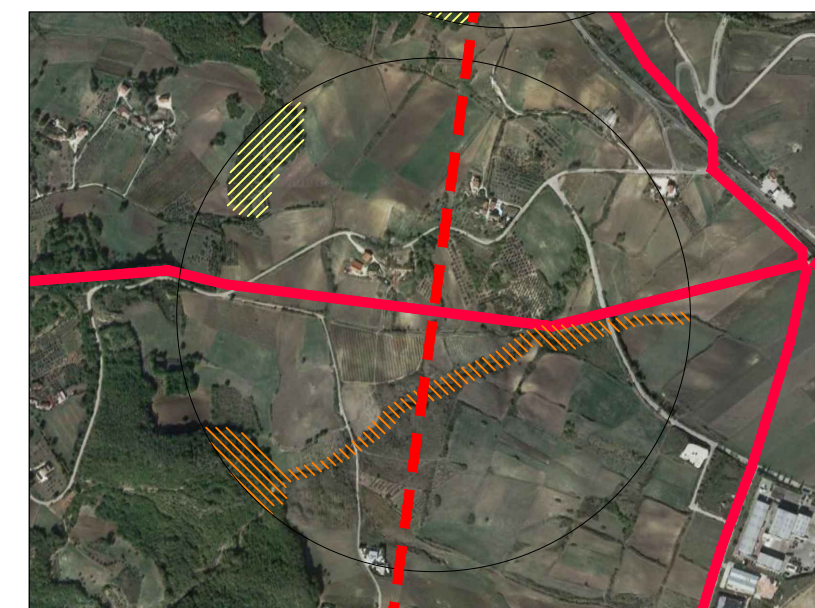
INTERFERENZA N.10



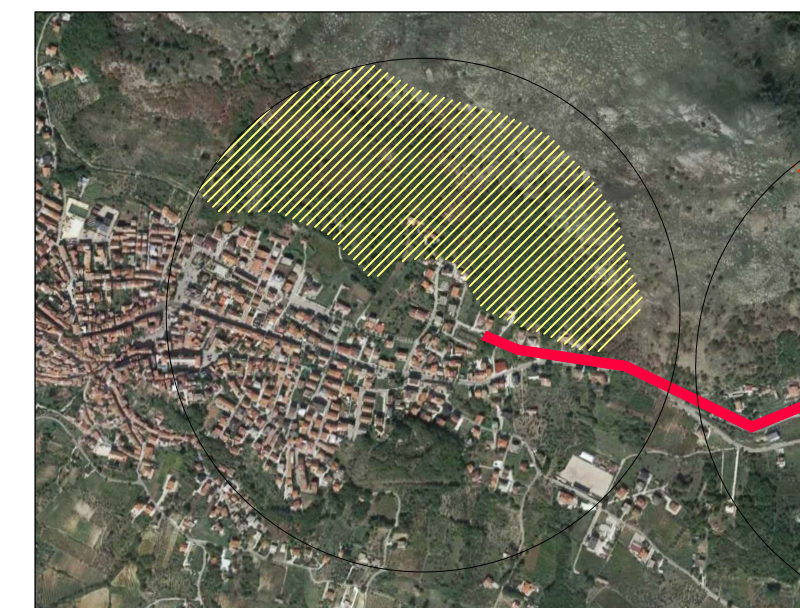
INTERFERENZA N.11



INTERFERENZA N.12



INTERFERENZA N.13



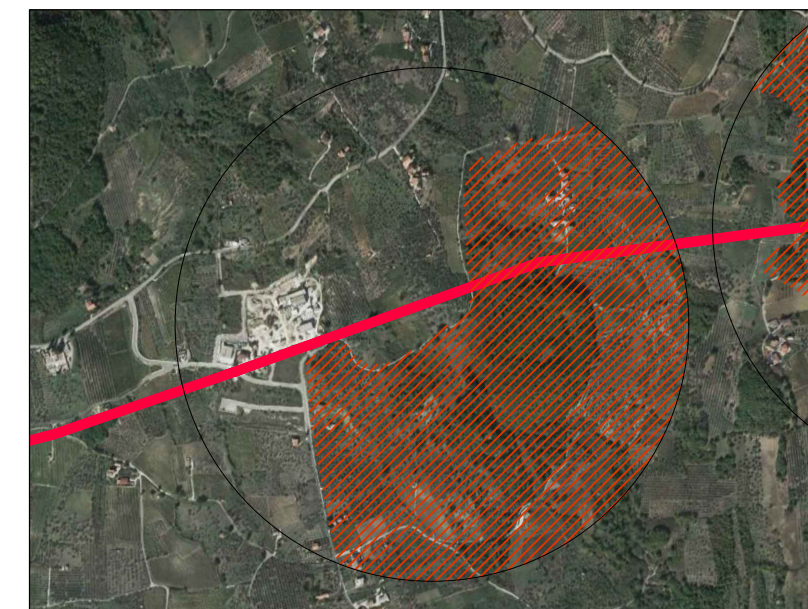
LEGENDA

- TRACCIATO DI PROGETTO
- TRACCIATO DI PROGETTO GALLERIA
- AMBITI DI INTERFERENZA
- IMPATTO DIRETTO
- IMPATTO ASSOCIATO AL FIUME
- IMPATTO MARGINALE

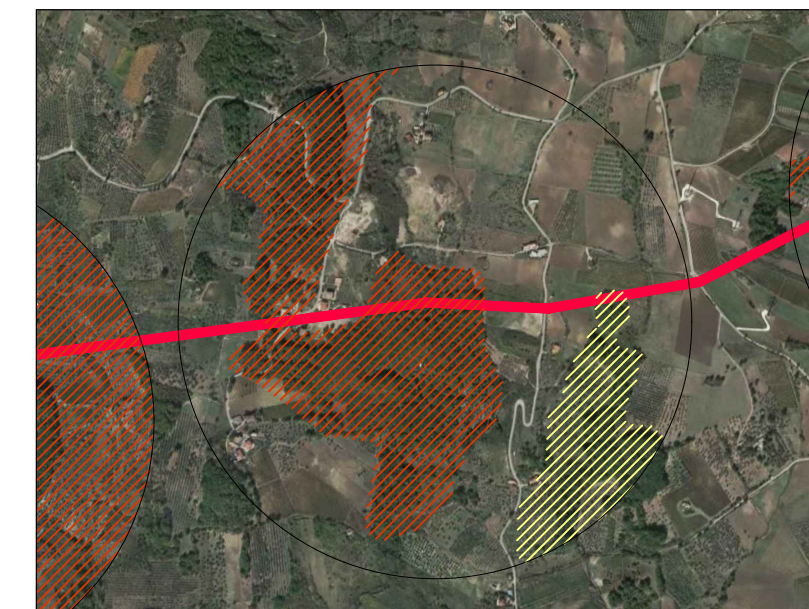
INTERFERENZA N.14



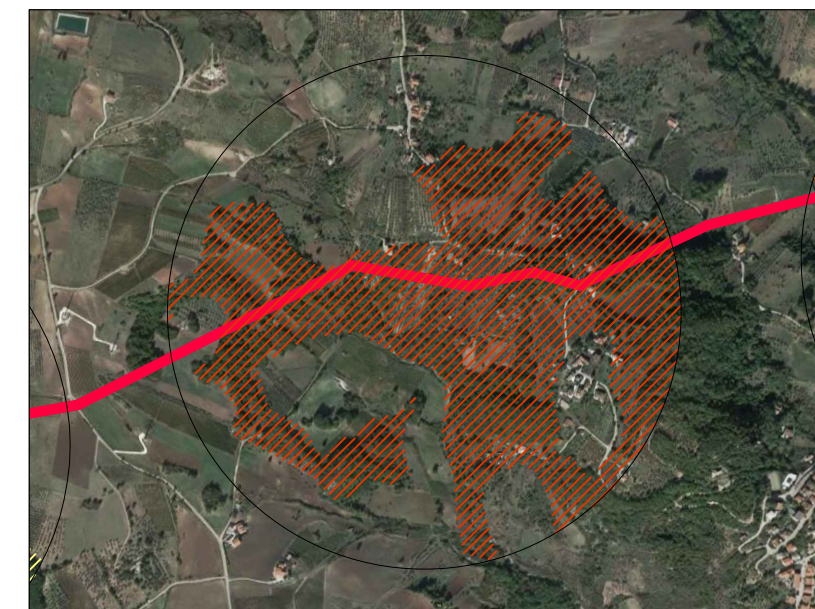
INTERFERENZA N.15



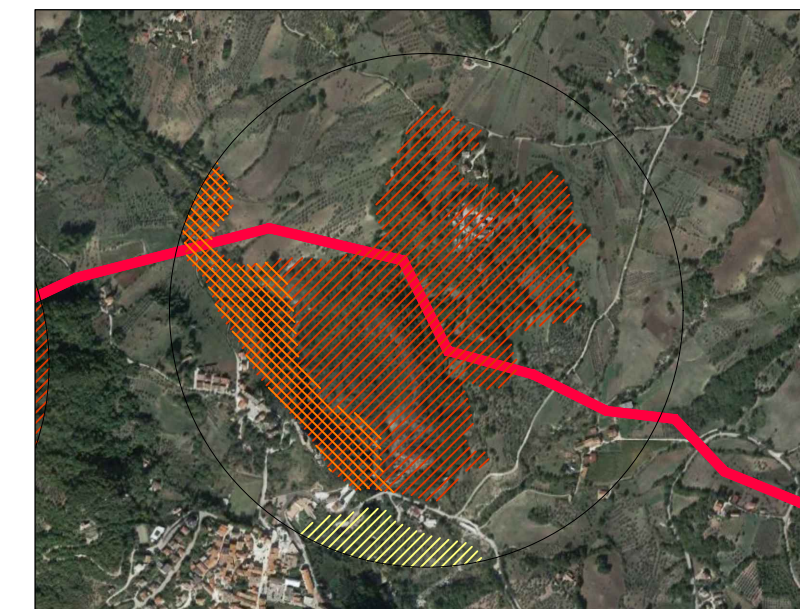
INTERFERENZA N.16



INTERFERENZA N.17



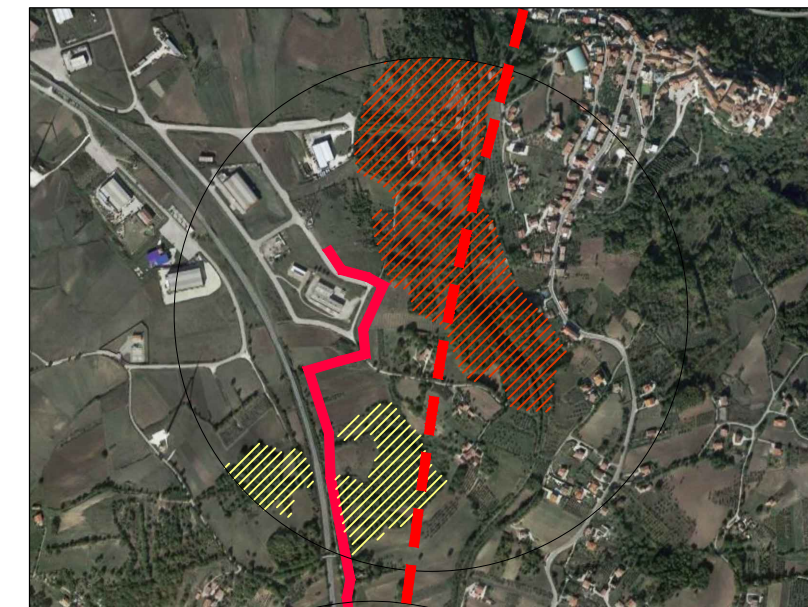
INTERFERENZA N.18



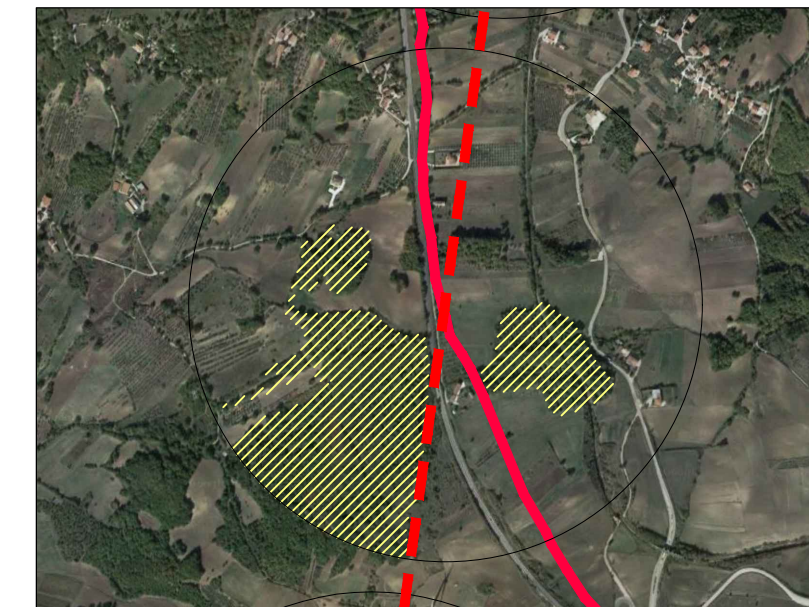
INTERFERENZA N.19



INTERFERENZA N.20



INTERFERENZA N.21



INTERFERENZA N.22



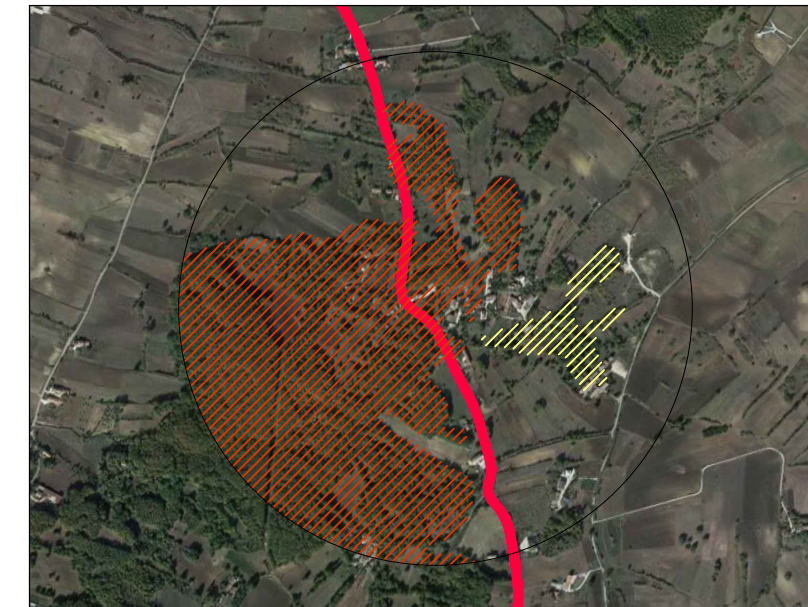
INTERFERENZA N.23



INTERFERENZA N.24



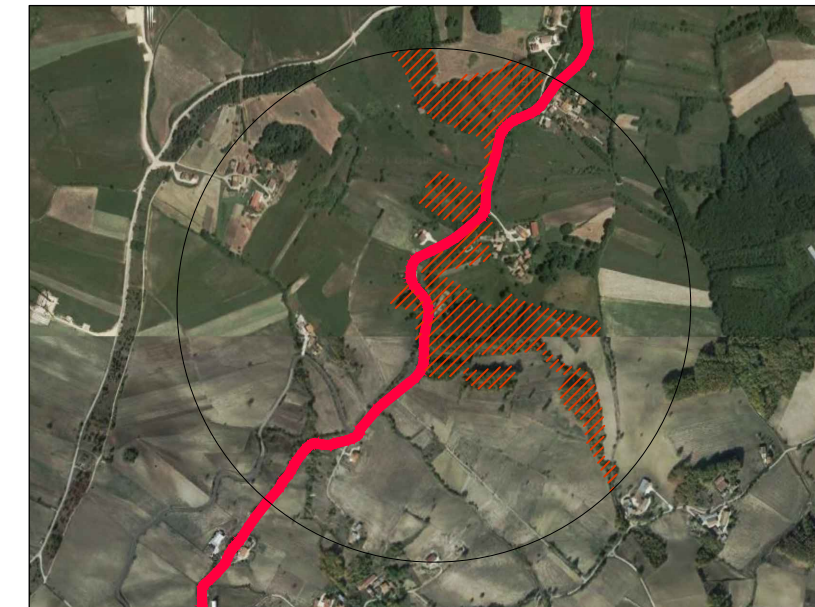
INTERFERENZA N.25



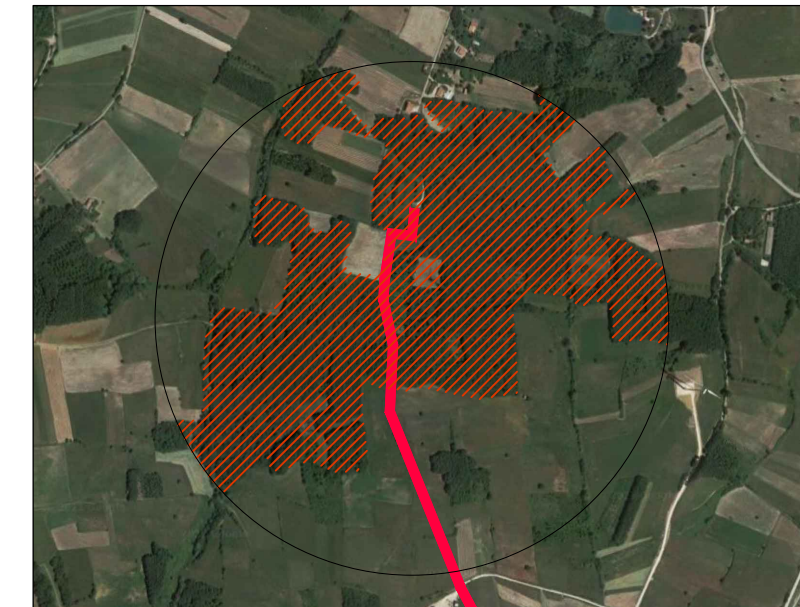
INTERFERENZA N.26



INTERFERENZA N.27



INTERFERENZA N.28



# REGIONE CAMPANIA

Acqua Campania S.p.A.

UTILIZZO IDROPOTABILE DELLE ACQUE  
DELL'INVASO DI CAMPOLATTARO E  
POTENZIAMENTO DELL'ALIMENTAZIONE  
POTABILE PER L'AREA BENEVENTANA

## STUDIO DI IMPATTO AMBIENTALE

I Progettisti

Il Concessionario

Revisione	Data	Descrizione	Redatto	Controllato	Approvato
01	Giugno 2021	EMISSIONE			
TITOLO :			VOLUME 4 PAESAGGIO		
Allegato			TAV.V4.10		
Progettazione:			 		
Revisione:			Scala:		