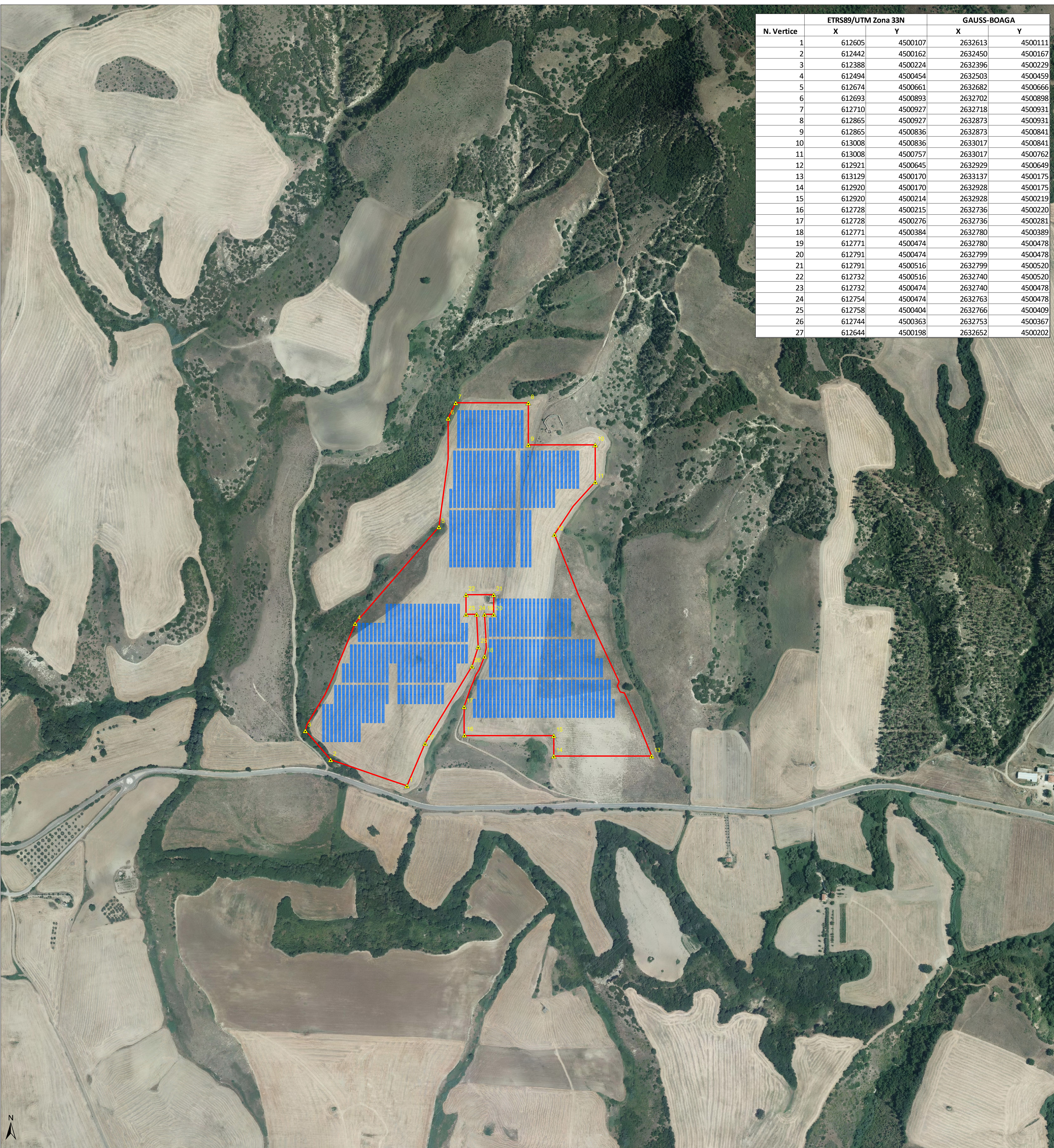



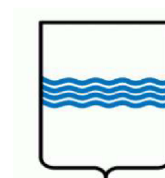


N. Vertice	ETRS89/UTM Zona 33N		GAUSS-BOAGA	
	X	Y	X	Y
1	612605	4500107	2632613	4500111
2	612442	4500162	2632450	4500167
3	612388	4500224	2632396	4500229
4	612494	4500454	2632503	4500459
5	612674	4500661	2632682	4500666
6	612693	4500893	2632702	4500898
7	612710	4500927	2632718	4500931
8	612865	4500927	2632873	4500931
9	612865	4500836	2632873	4500841
10	613008	4500836	2633017	4500841
11	613008	4500757	2633017	4500762
12	612921	4500645	2632929	4500649
13	613129	4500170	2633137	4500175
14	612920	4500170	2632928	4500175
15	612920	4500214	2632928	4500219
16	612728	4500215	2632736	4500220
17	612728	4500276	2632736	4500281
18	612771	4500384	2632780	4500389
19	612771	4500474	2632780	4500478
20	612791	4500474	2632799	4500478
21	612791	4500516	2632799	4500520
22	612732	4500516	2632740	4500520
23	612732	4500474	2632740	4500478
24	612754	4500474	2632763	4500478
25	612758	4500404	2632766	4500409
26	612744	4500363	2632753	4500367
27	612644	4500198	2632652	4500202



-  Impianto fotovoltaico
-  Vertici impianto
-  Limite impianto



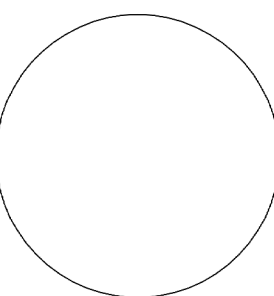
REGIONE BASILICATA



COMUNE DI GROTTOLE PROVINCIA DI MATERA

PROGETTO DEFINITIVO
 IMPIANTO AGRIVOLTAICO AD INSEGUIMENTO SOLARE DA 19,9584 MWp
 DA REALIZZARSI IN LOCALITA' "BOLETTIERI" NEL COMUNE DI GROTTOLE

TAVOLA:	A.12.a.5	Carta con localizzazione georeferenziata
SCALA:	1:4000	
DATA:	novembre 2021	

Committente:	MARMARIA SOLARE 15 - S.R.L.	 
Progettista impianti elettrici:	Ing. Paolo Acquasanta	
Collaboratori:	Ing. Eustachio Santarsia Studio Tecnico Lantri Srls	
Opere edili e consulenza Ambientale:	Ing. Paolo Acquasanta Arch. Cosimo Damiano Belfiore Geom. Rocco Donato Lorusso	
Archeologo:	Dott. Antonio Bruscella	
Geologo:	Dott. Maurizio Giacomino	
Agronomo:	Dott. Gino Panzardi	

