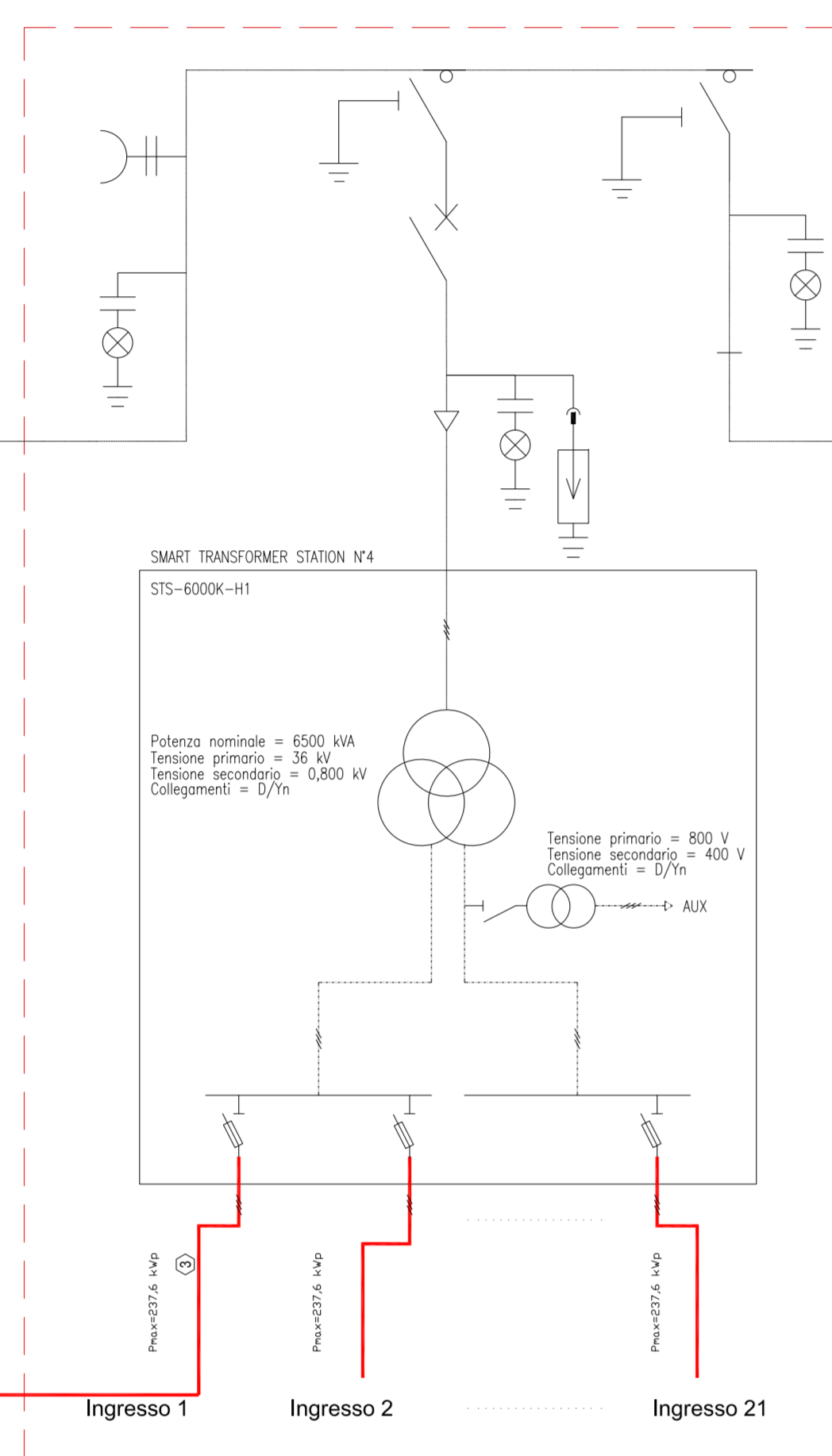
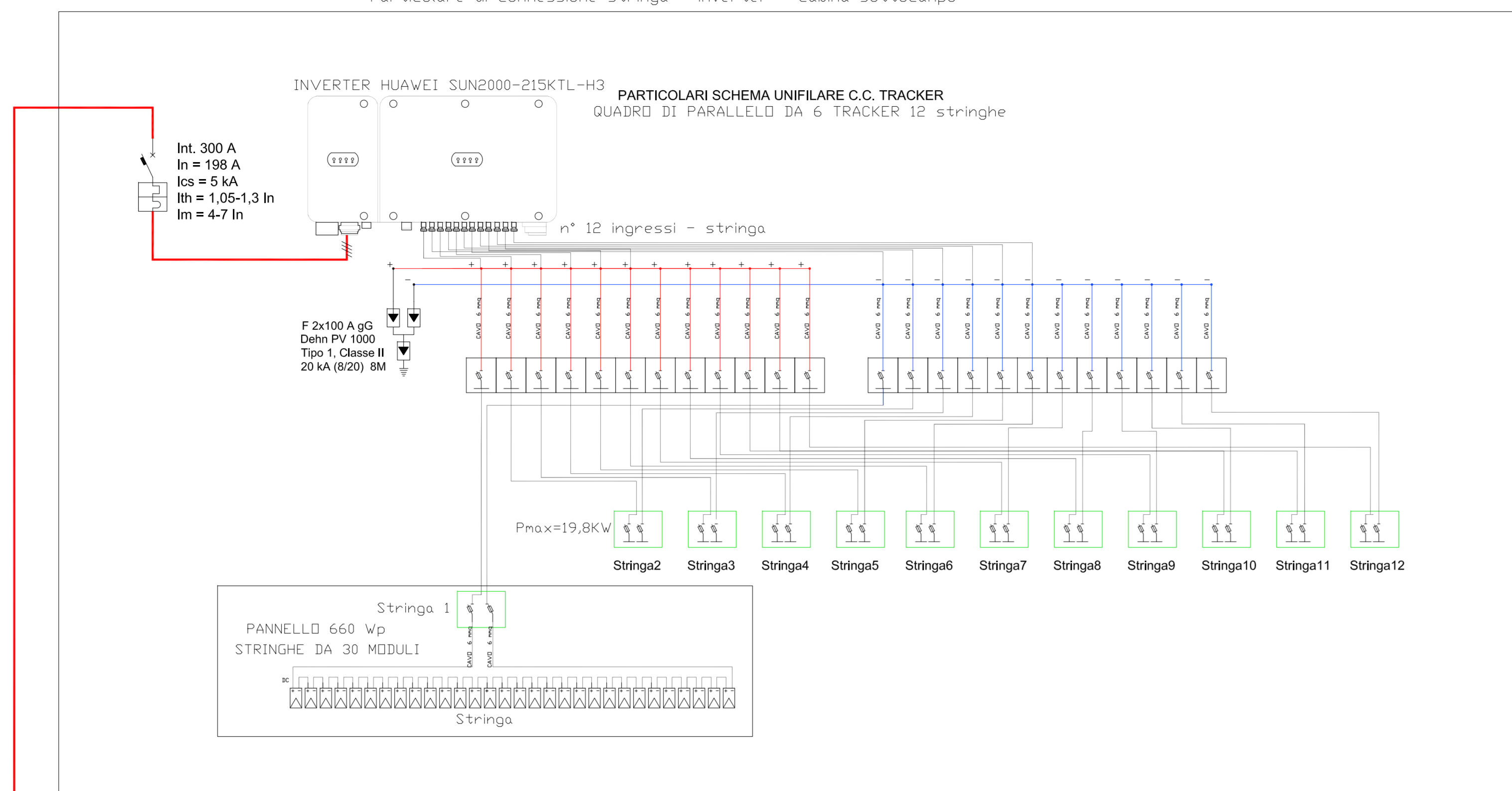
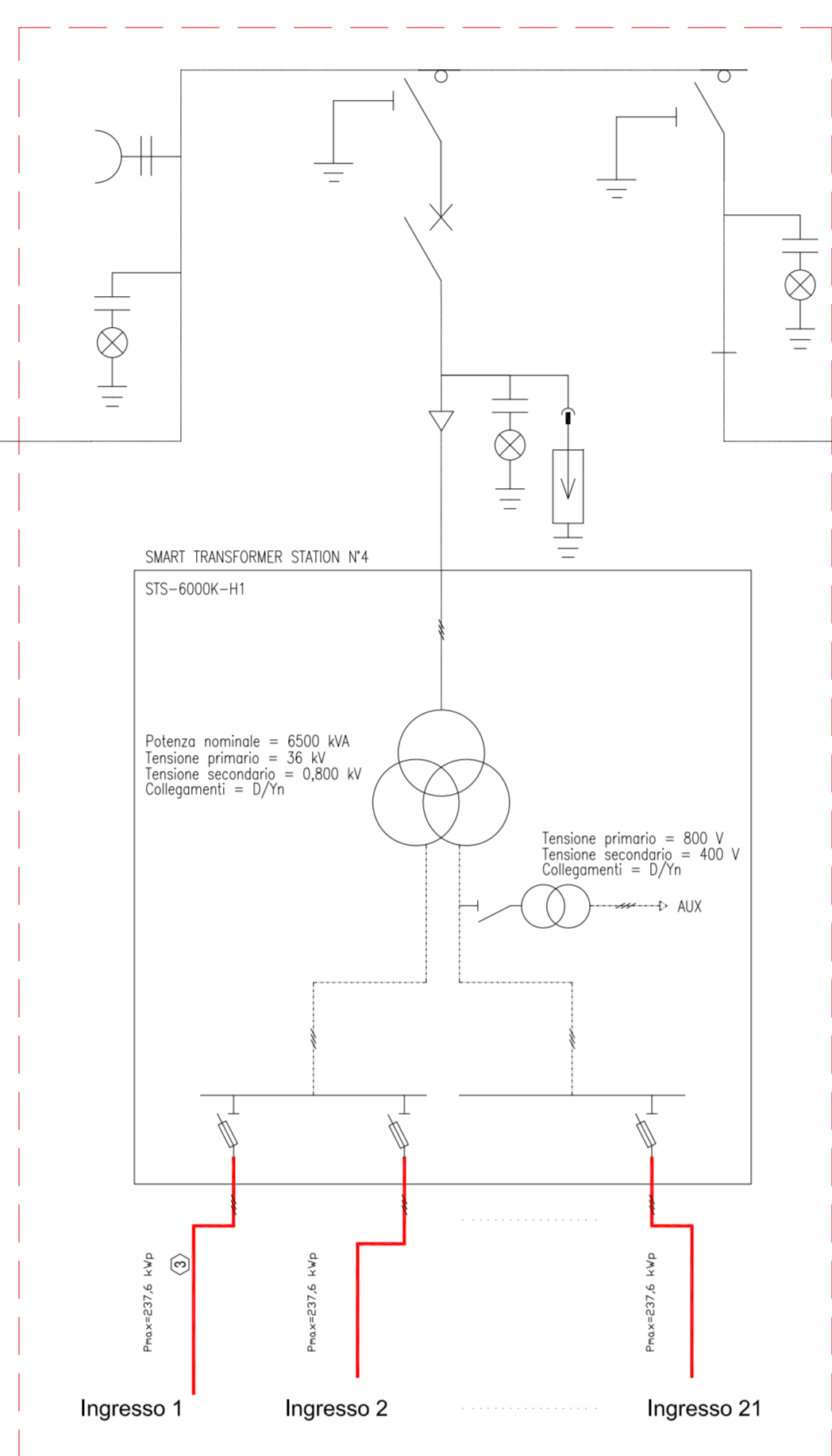


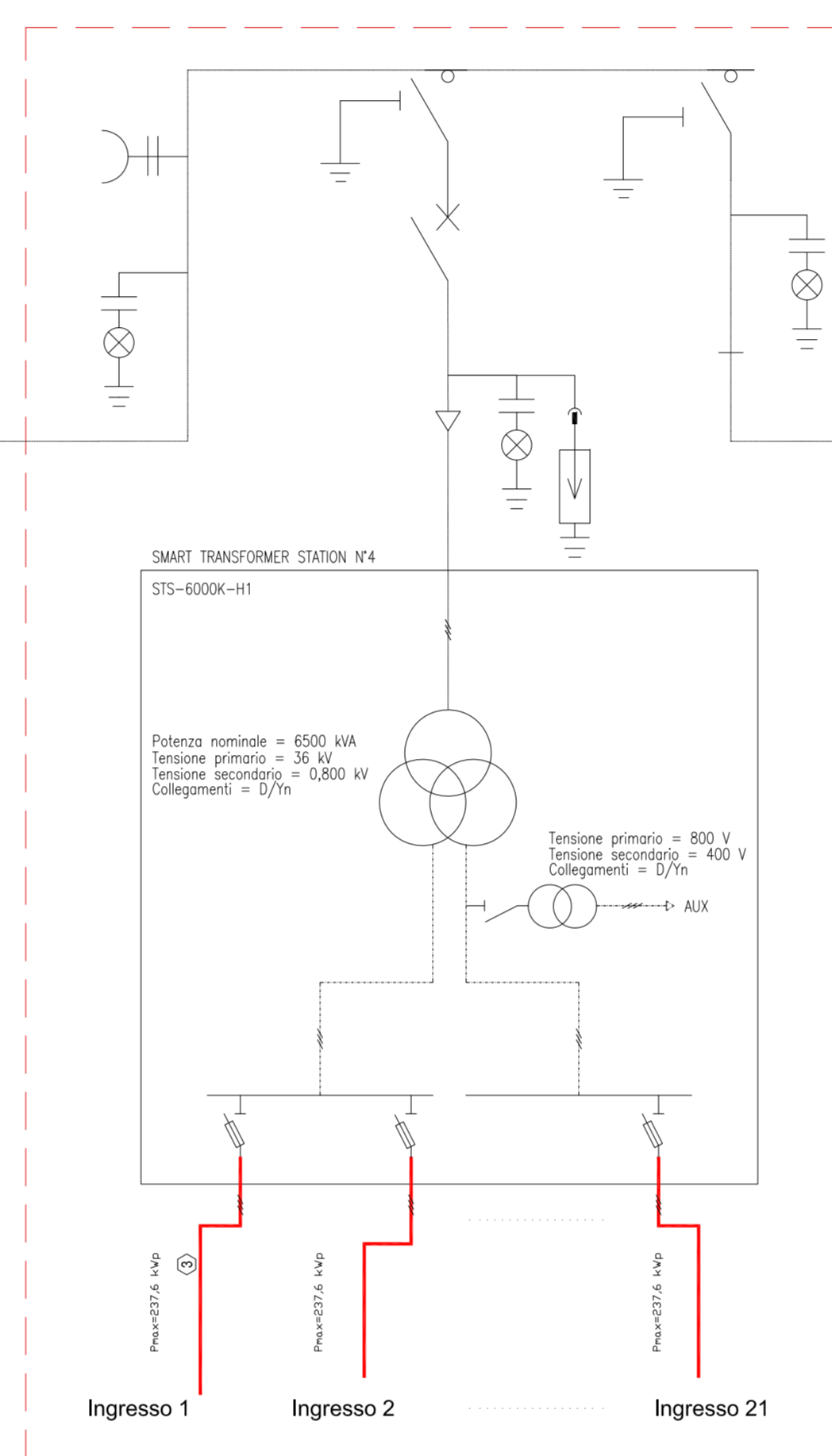
Particolare di connessione stringa - inverter - cabina sottocampo



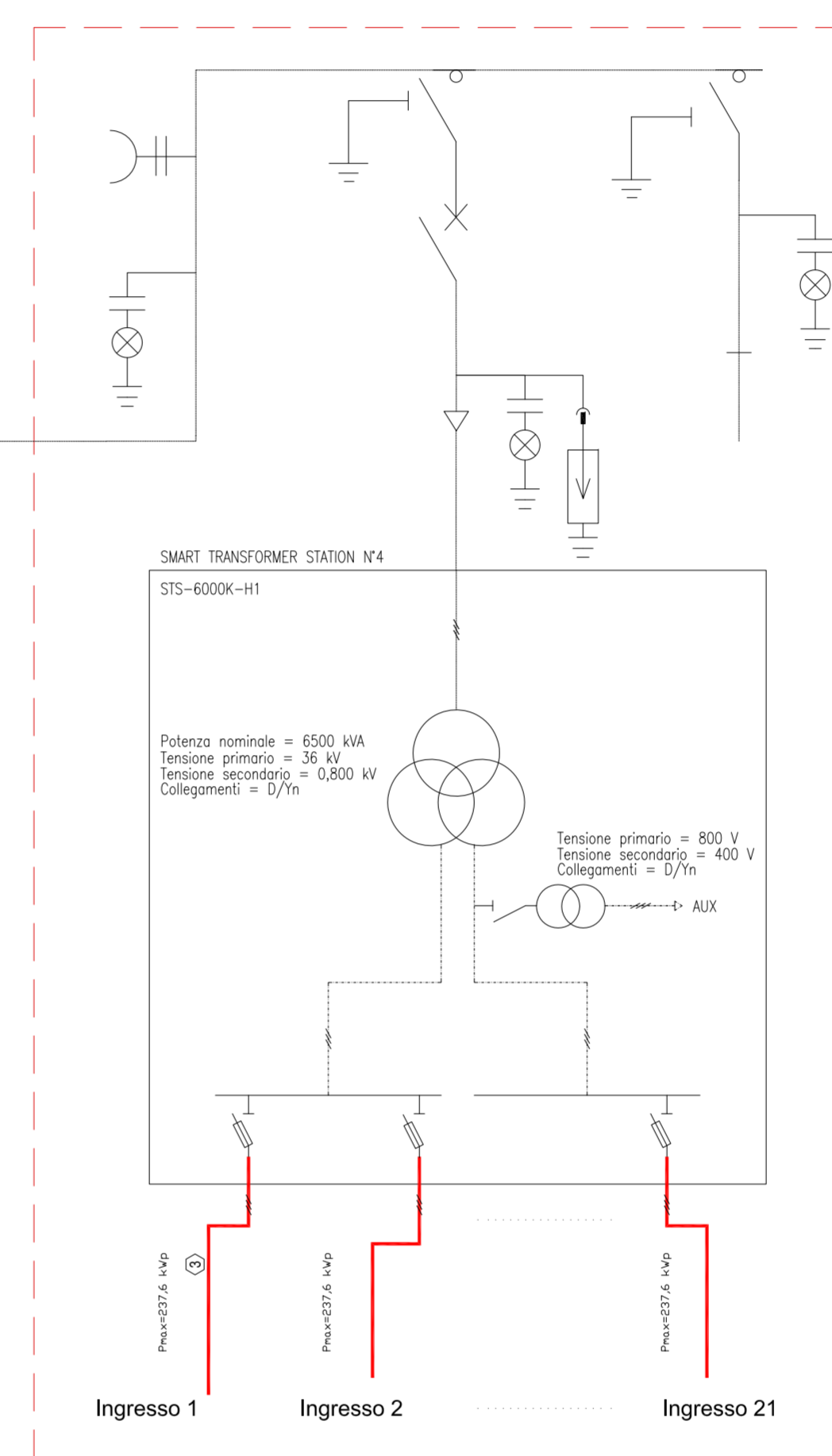
Sottocampo 1



Sottocampo 2

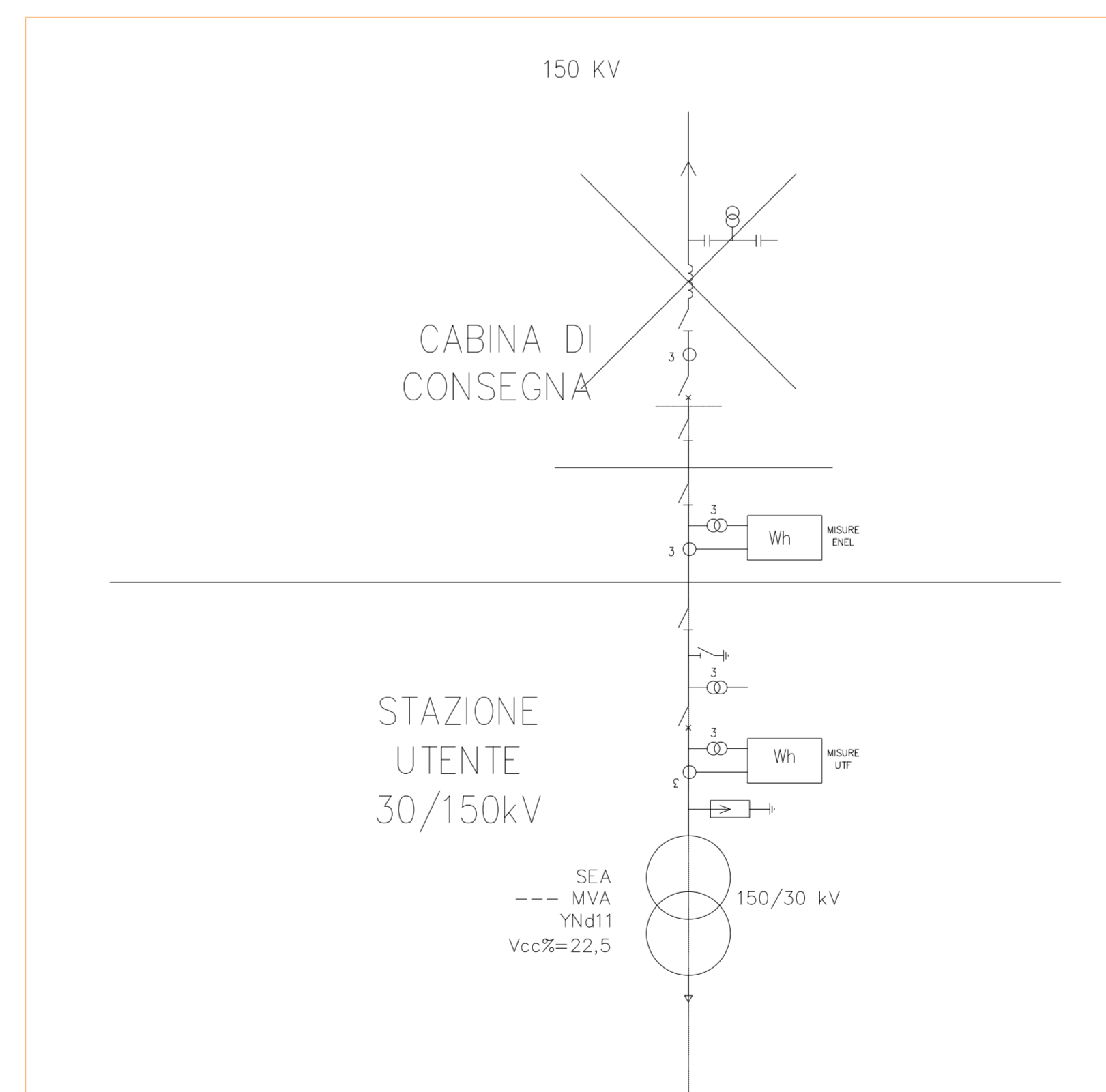
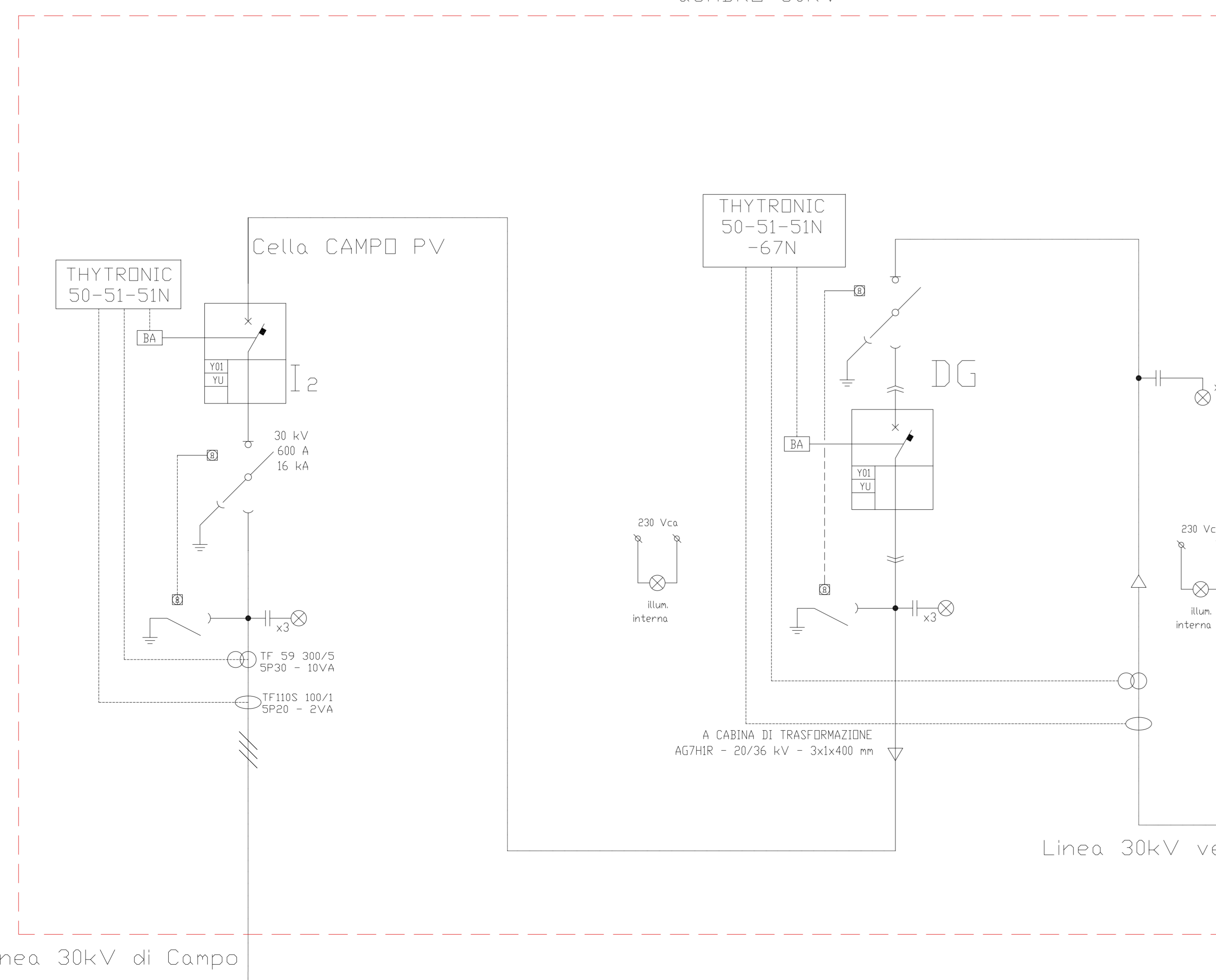


Sottocampo 3

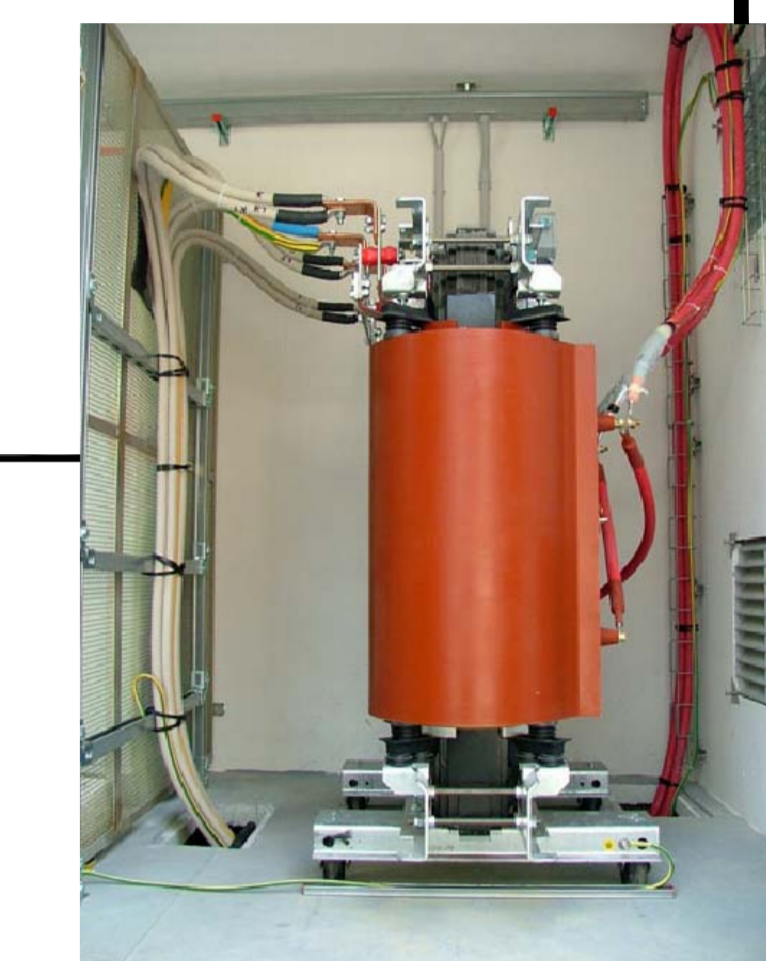


Sottocampo 4

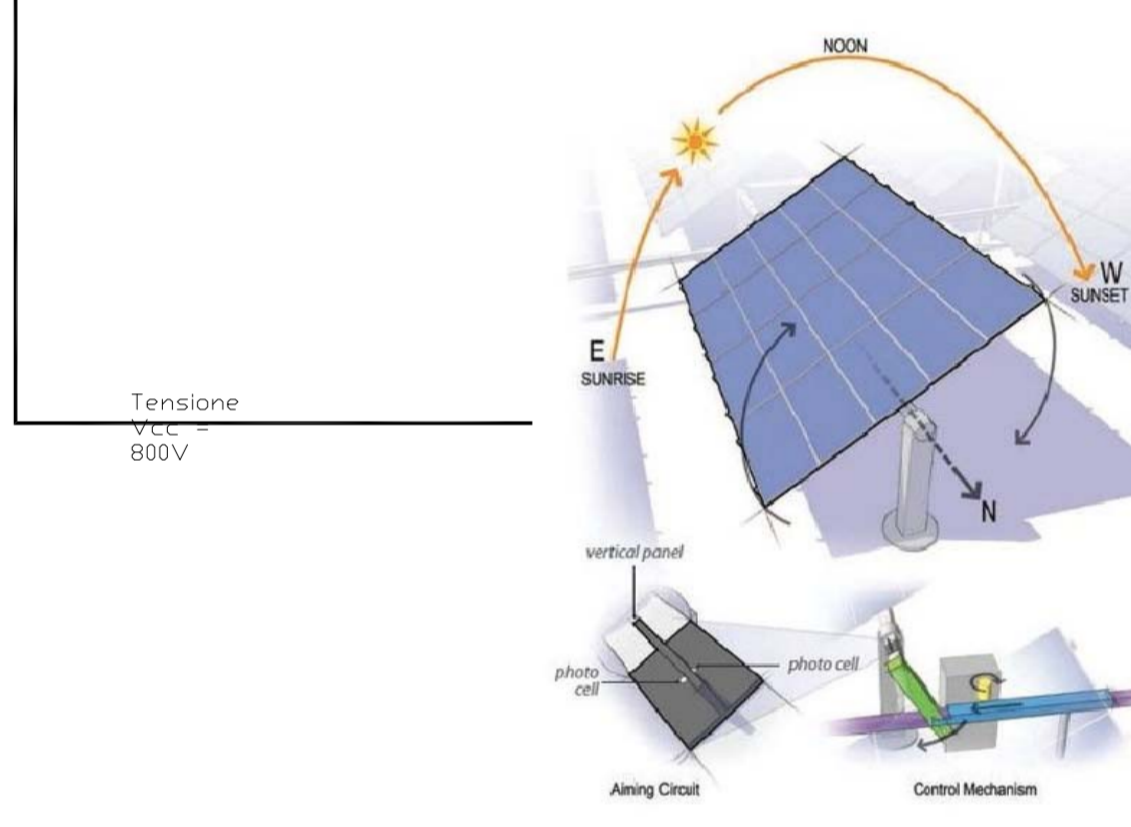
QUADRO 30kV



Tensione Vcc = 230V



Tensione 800V



REGIONE BASILICATA



COMUNE DI MONTEMILONE  
PROVINCIA DI POTENZA

PROGETTO DEFINITIVO  
IMPIANTO FOTOVOLTAICO AD INSEGUIMENTO SOLARE DA 19,9584 MWp DA  
REALIZZARSI IN LOCALITA' PERILLO QUAGLIETTA NEL COMUNE DI MONTEMILONE

TAVOLA:	A12.b.8
SCALA:	-:--
DATA:	novembre 2021

Committente: PERILLO QUAGLIETTA - S.R.L.

Progettista impianti elettrici: Ing. Paolo Acquasanta  
Collaboratori: Ing. Eustachio Santarsia  
Studio Tecnico Lantri Srls

Opere edili e consulenza Ambientale: Ing. Paolo Acquasanta  
Arch. Cosimo Damiano Belfiore  
Geom. Rocco Donato Lorusso

Archeologo: Dott. Antonio Bruscella  
Geologo: Dott. Maurizio Giacomino

