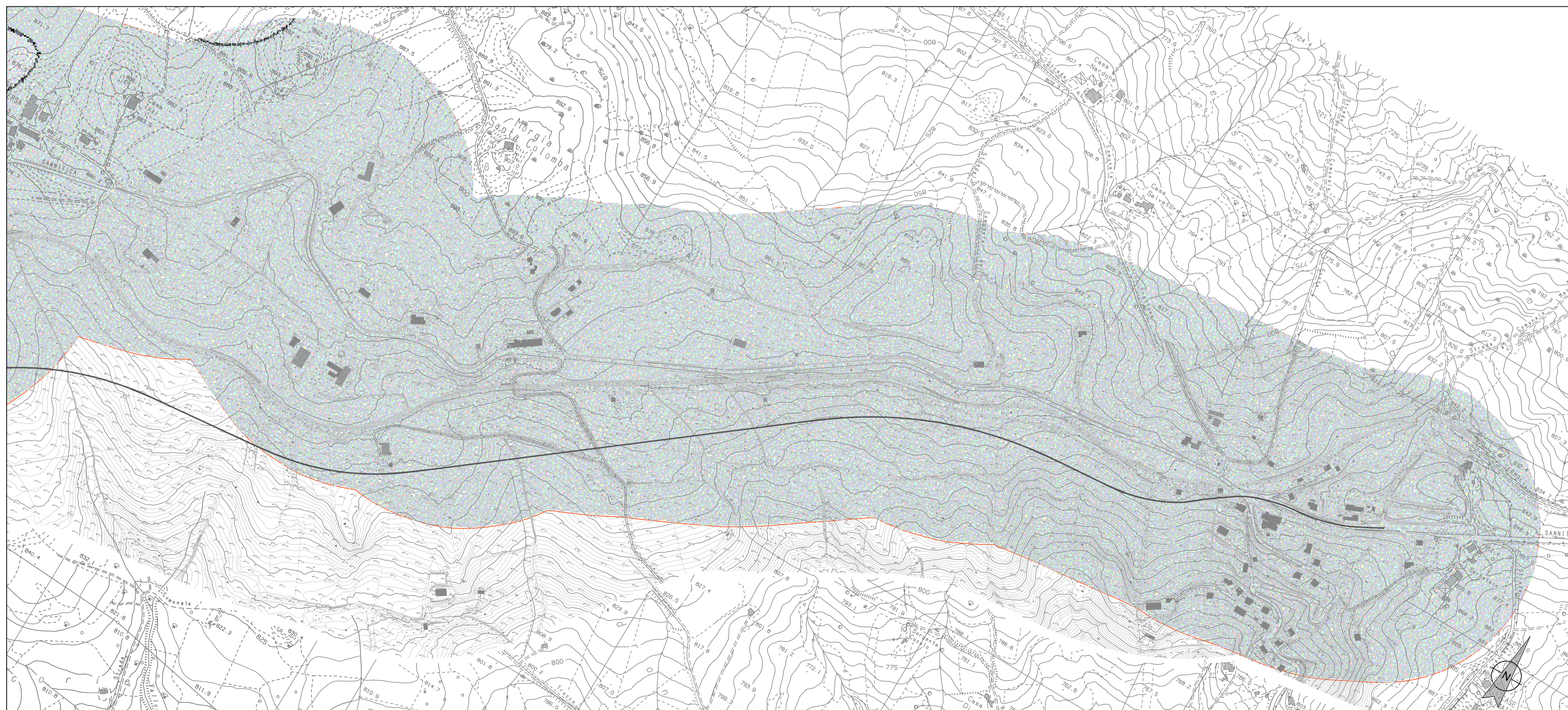
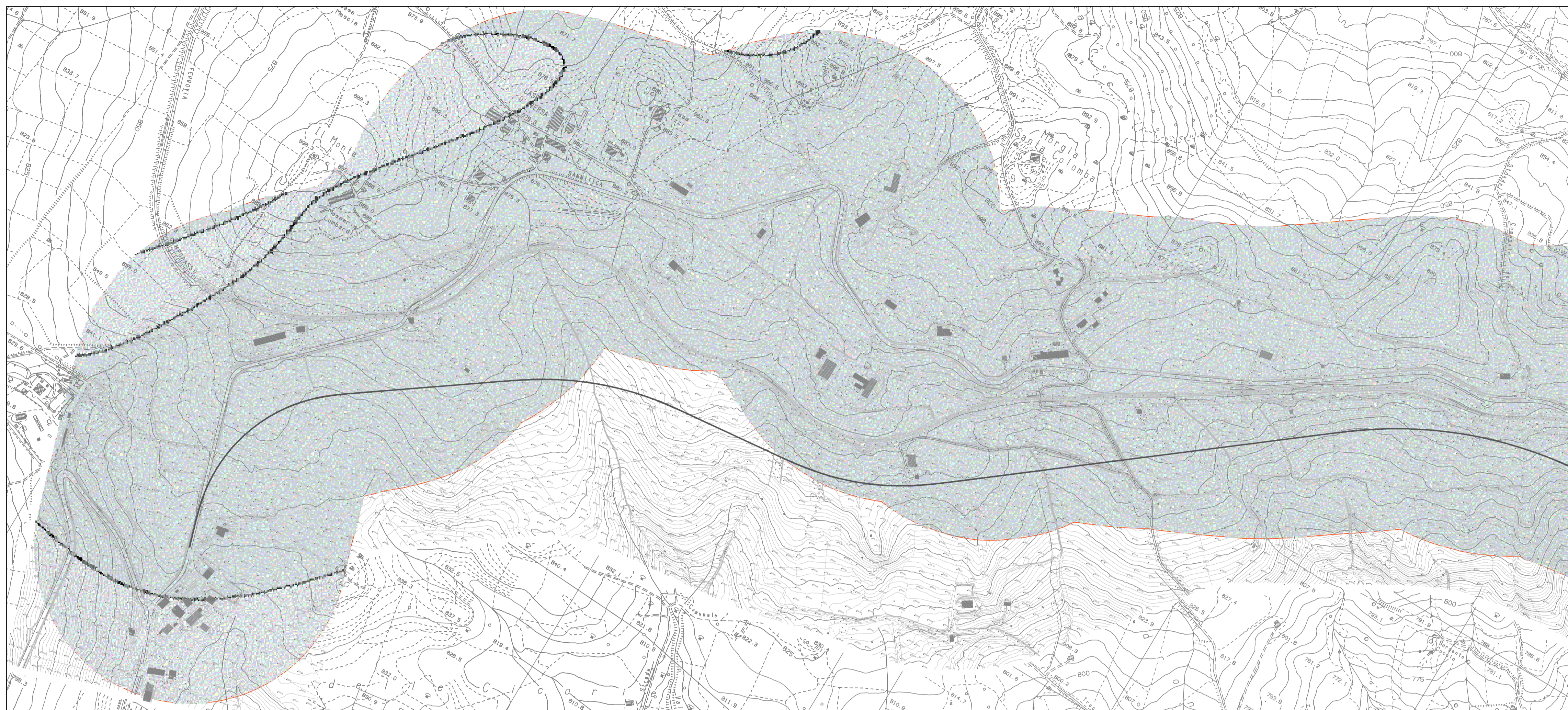


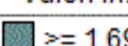
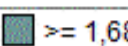
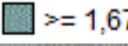
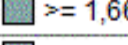

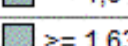
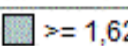
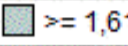
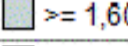

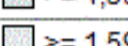
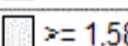
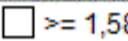




# MAPPA DELLE CONCENTRAZIONI SCENARIO ZERO - INQUINANTE PM10

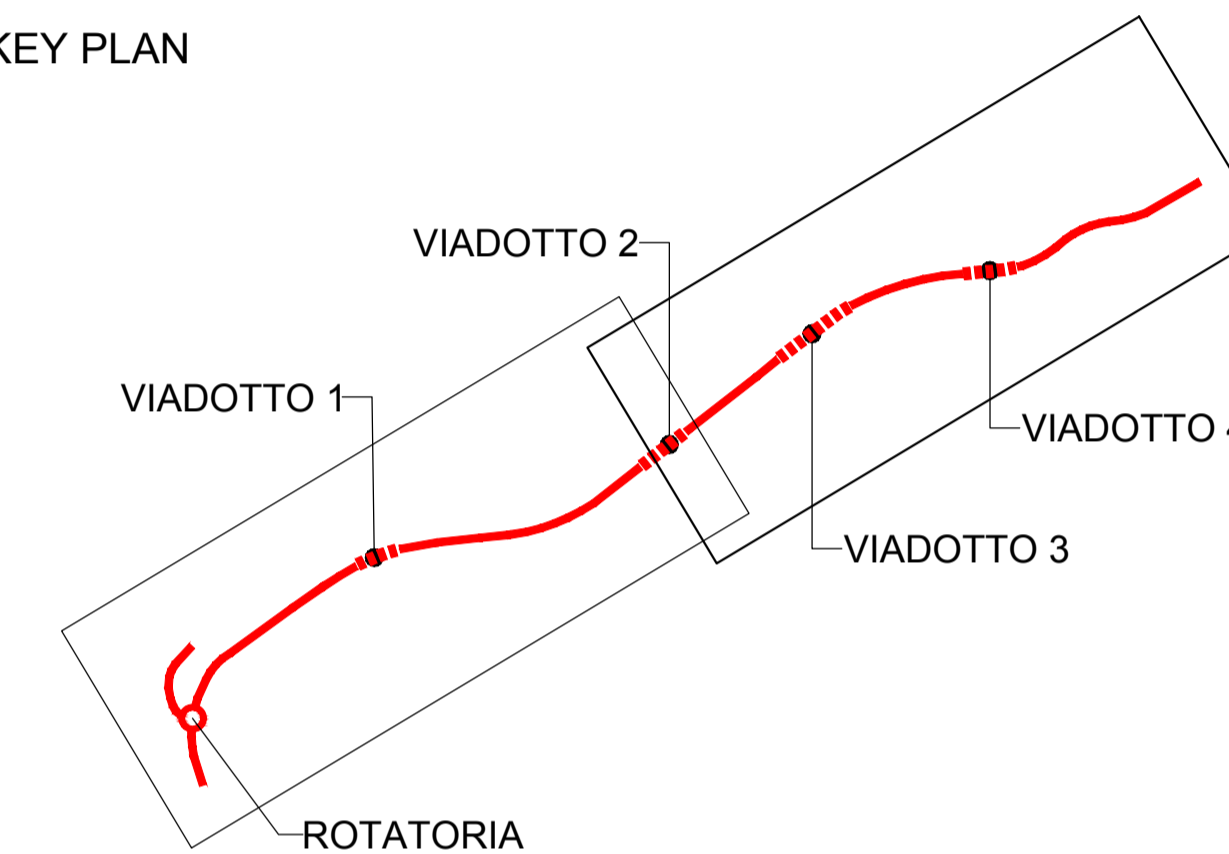


## LEGENDA

-  Tracciato di progetto
-  Area di indagine atmosferica (300m)

Valori in: ug/m3
 $\geq 1,690E+001$
 $\geq 1,680E+001$
 $\geq 1,670E+001$
 $\geq 1,660E+001$
 $\geq 1,650E+001$
 $\geq 1,640E+001$
 $\geq 1,630E+001$
 $\geq 1,620E+001$
 $\geq 1,610E+001$
 $\geq 1,605E+001$
 $\geq 1,600E+001$
 $\geq 1,595E+001$
 $\geq 1,590E+001$
 $\geq 1,585E+001$
 $\geq 1,580E+001$

## KEY PLAN



Direzione Progettazione e Realizzazione Lavori

## ADEGUAMENTO S.S. n°87 "SANNITICA"

Interventi localizzati per garantire la percorribilità immediata  
Tratto "Campobasso - Bivio S.Elia"  
Lotti A2 e A3

### PROGETTO DEFINITIVO

COD. CB 150

#### PROGETTAZIONE:

(Mandatario)

**bonifica spa**

(Mandante)

(Mandante)

#### PROGETTISTA:

Ing. Franco Persio Bocchetto - Ordine Ing. Roma n. 3864- Sez. A  
Ing. Luigi Albert - Ordine Ing. Milano n. 14725- Sez. A  
Ing. Paolo Franchetti - Ordine Ing. Vicenza n. 2013- Sez. A

#### GEOLOGO:

Geol. Dott. Anna Maria Bruna  
Ordine Geol. Lazio n. 1531

#### RESPONSABILE DELL'INTEGRAZIONE DELLE DISCIPLINE SPECIALISTICHE:

Ing. Franco Persio Bocchetto - Ordine Ing. Roma n. 3864- Sez. A

#### COORDINATORE DELLA SICUREZZA:

Ing. Andrea Maria Enea Falla - Ordine Ing. Catania n. 16701

#### VISTO: IL RESPONSABILE DEL PROCEDIMENTO

Ing. CLAUDIO BUCCI

16 SIA-STUDIO DI IMPATTO AMBIENTALE  
16.04 Analisi Ambientale  
Mappa delle concentrazioni Scenario Zero - inquinante PM10

CODICE PROGETTO	NOME FILE	REVISIONE	SCALA:
PROGETTO DPCB0150	LIV. PROG. ANNO D 22	T001A00AMBPL26A	A
	CODICE ELAB. T001A00AMBPL26		1:5000

REV.	DESCRIZIONE	DATA	REDATTO	VERIFICATO	APPROVATO
C					
B					
A	EMISSIONE	Aprile 2022	Ing. V. Battistini	Arch. D. Dori	Ing. F.P. Bocchetto