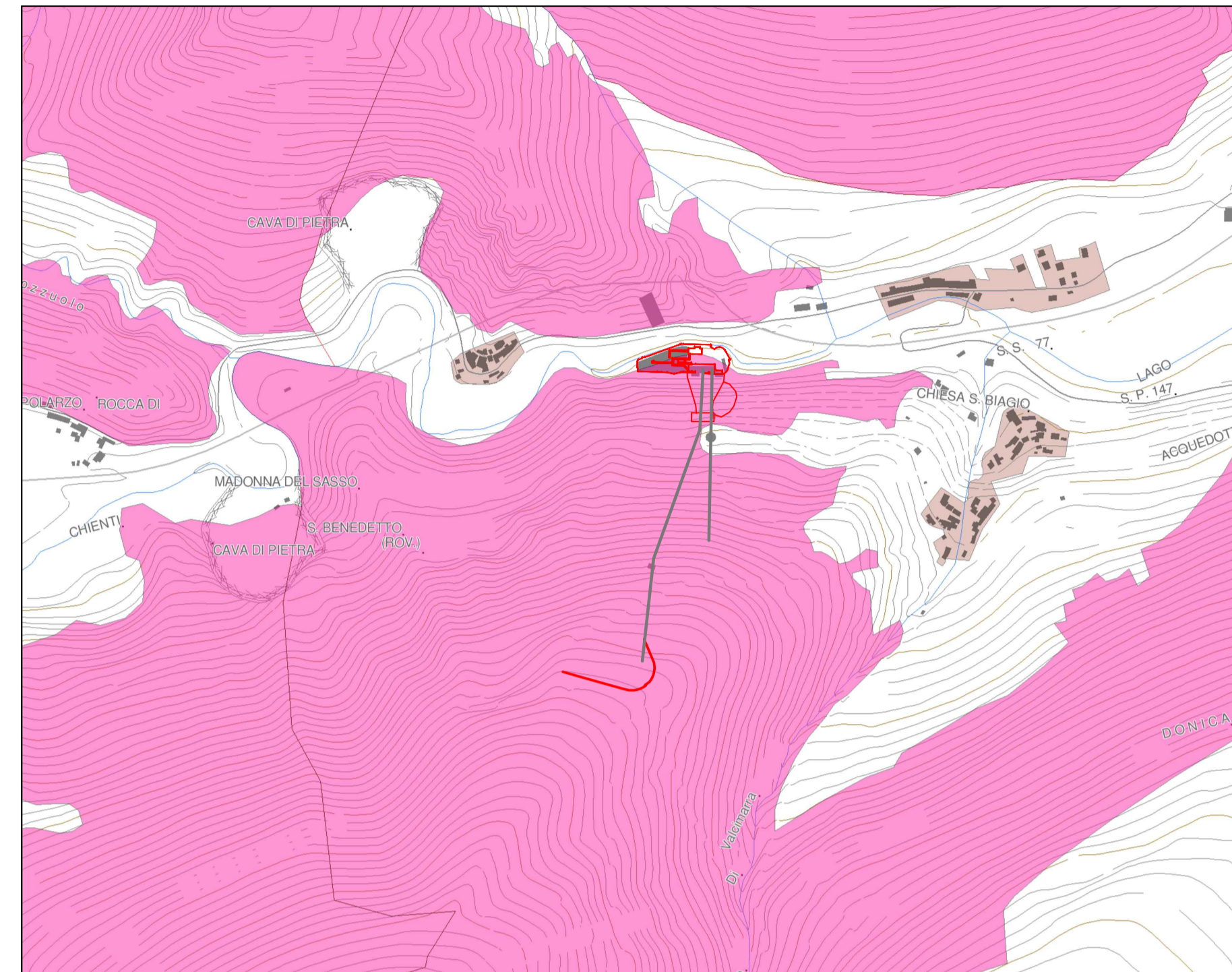
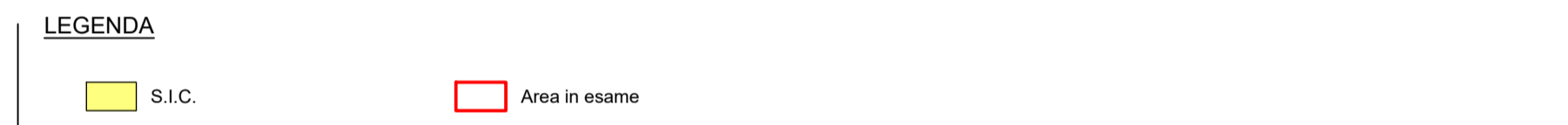
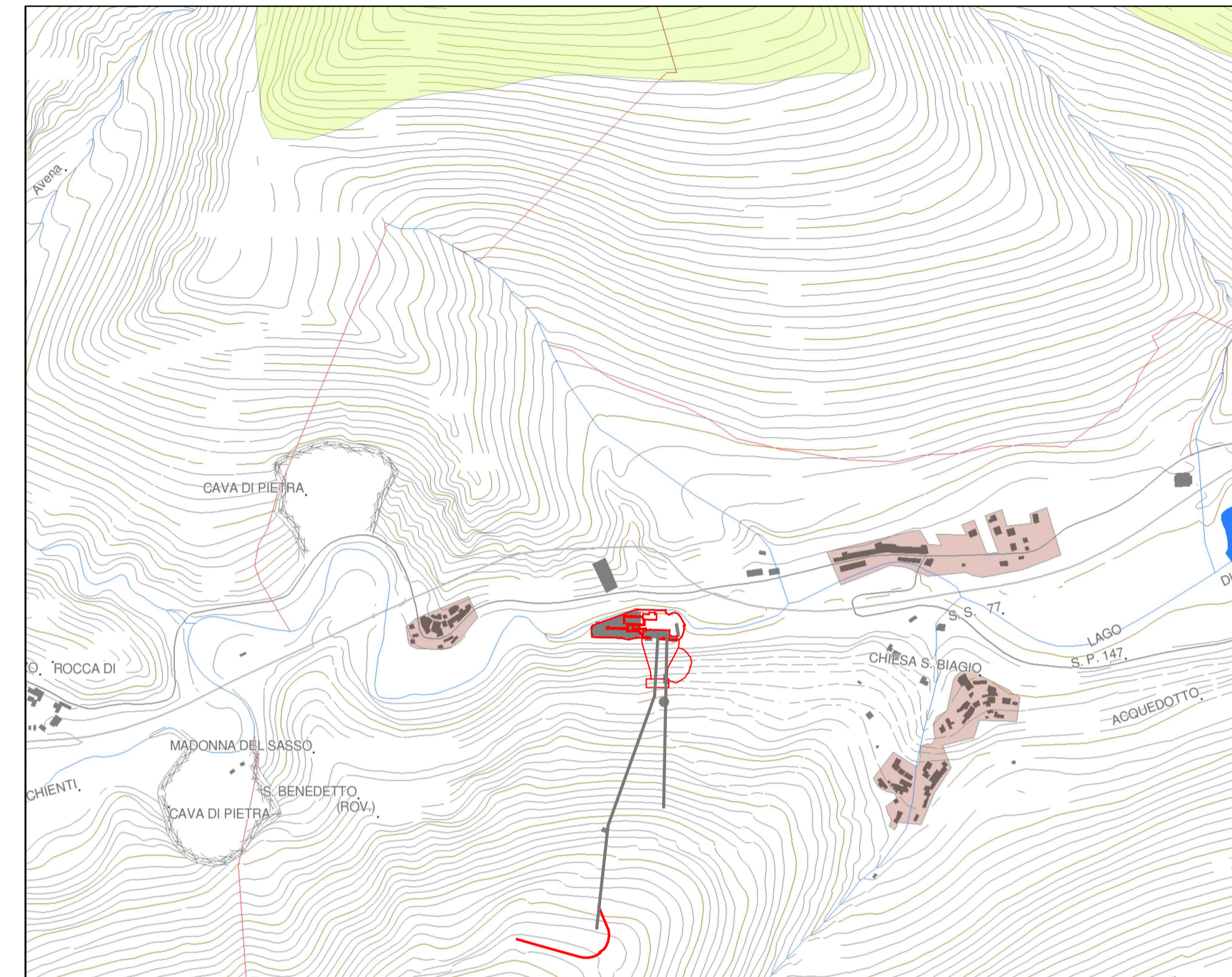


ESTRATTI CARTE TEMATICHE DEI VINCOLI AMBIENTALI

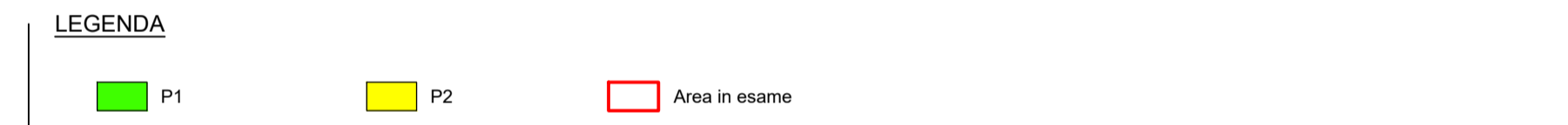
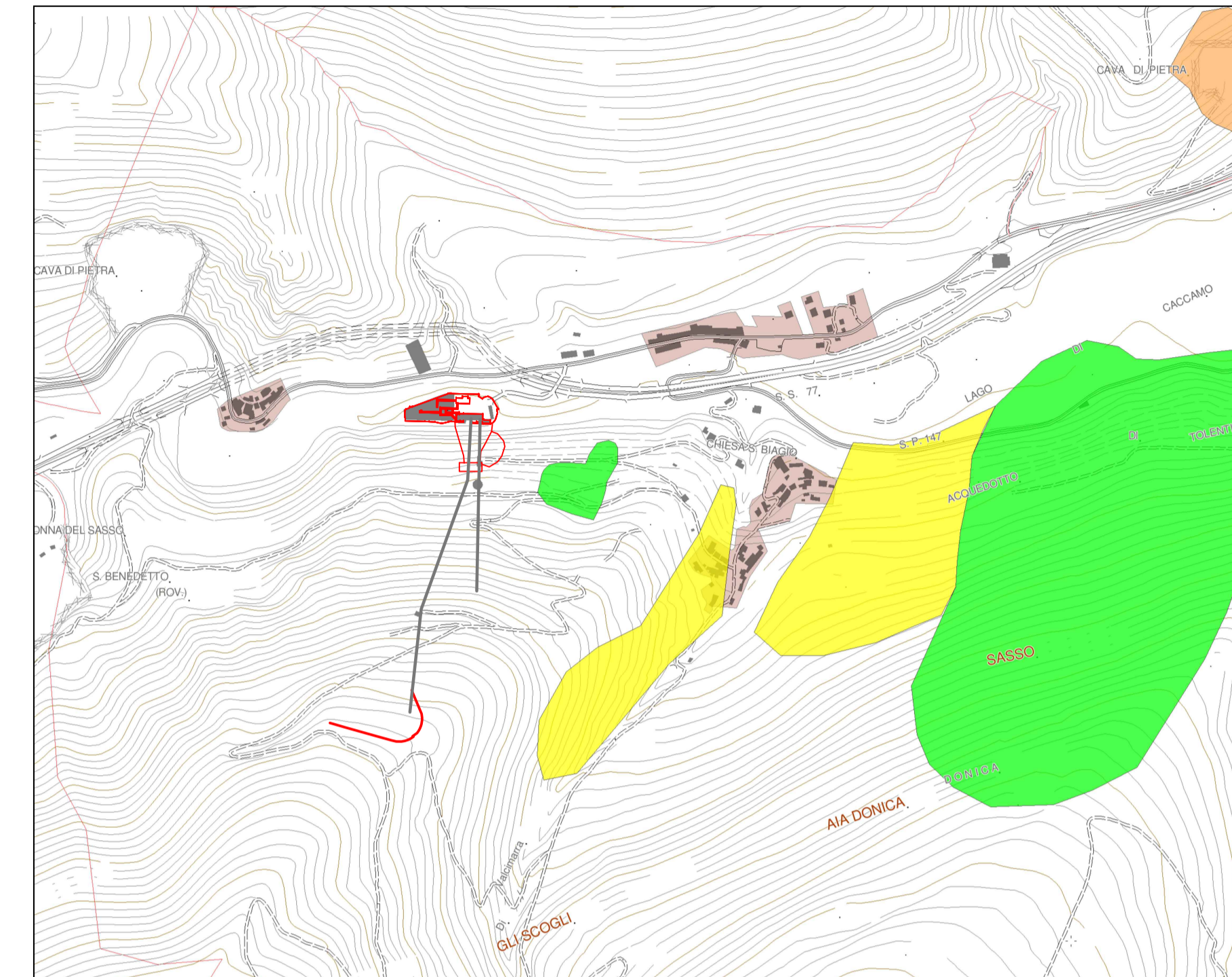
ESTRATTO CARTA DEL VINCOLO IDROGEOLOGICO
PROVINCIA DI MACERATA
Scala 1:10.000



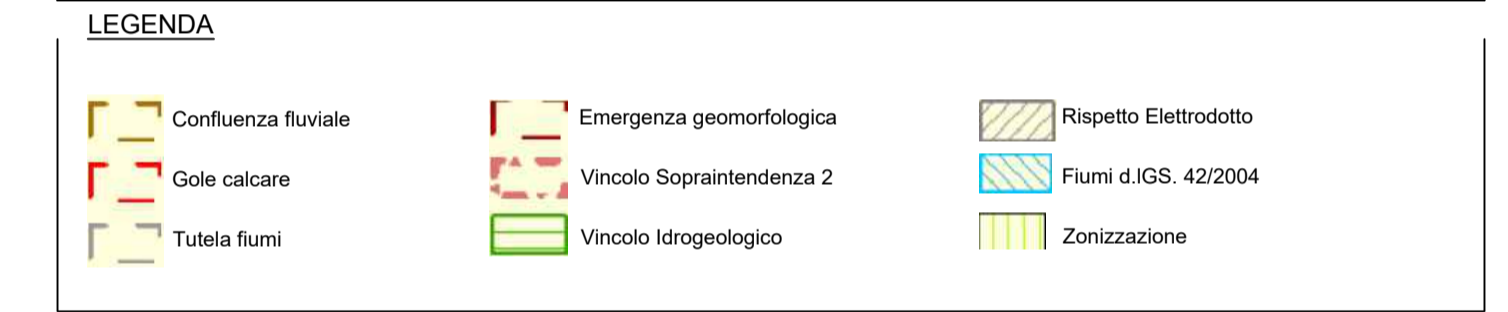
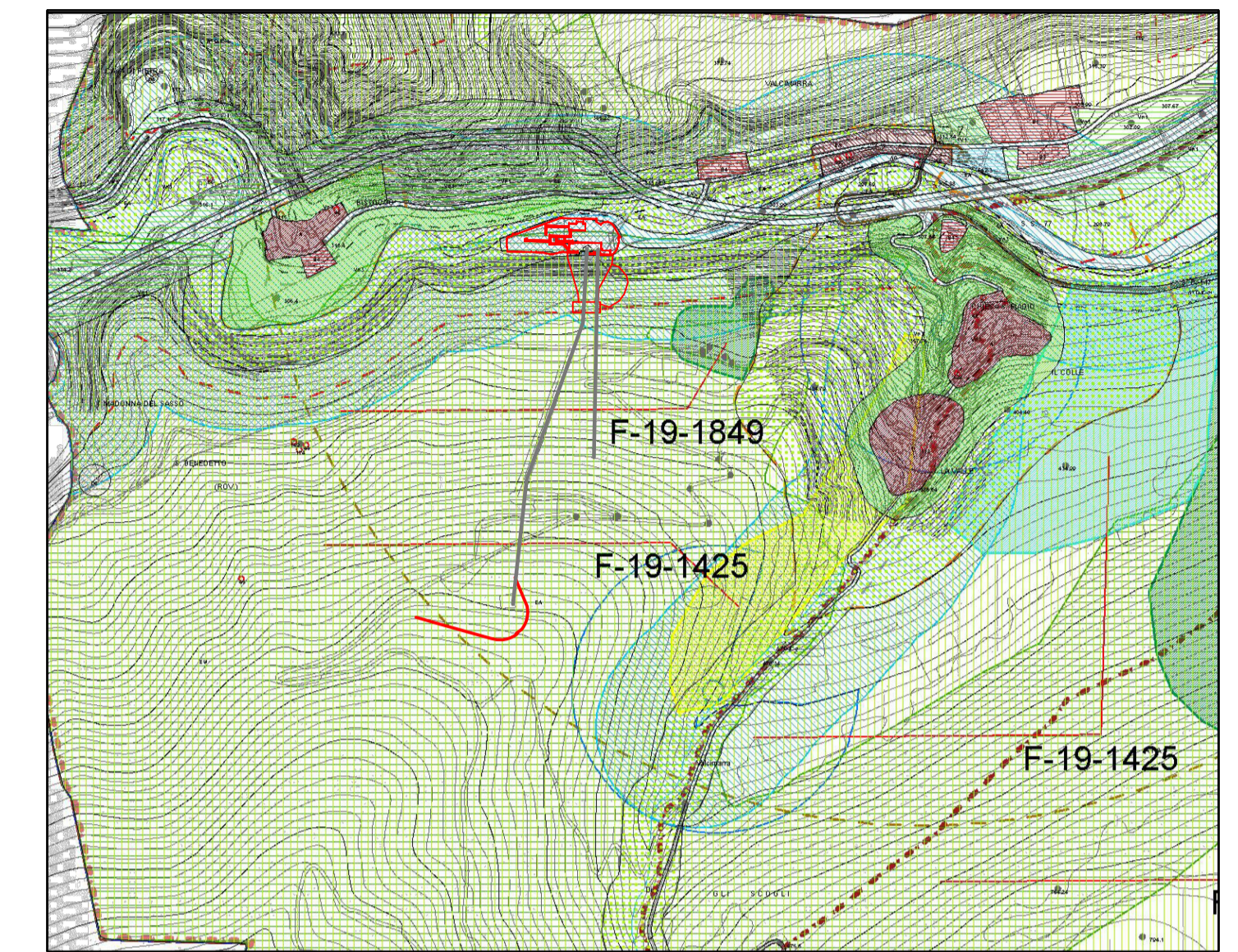
UBICAZIONE SIC
PROVINCIA DI MACERATA
Scala 1:10.000



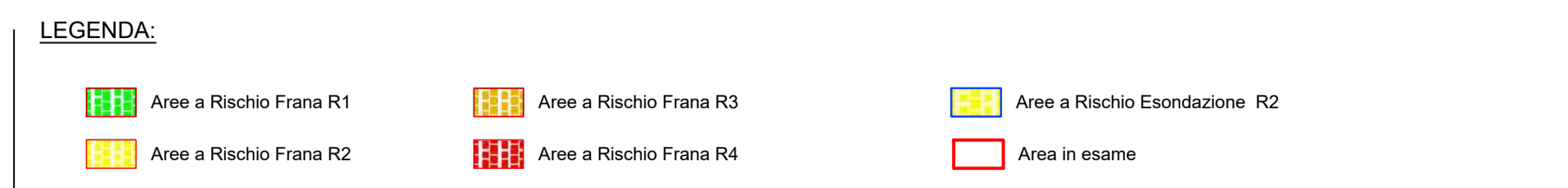
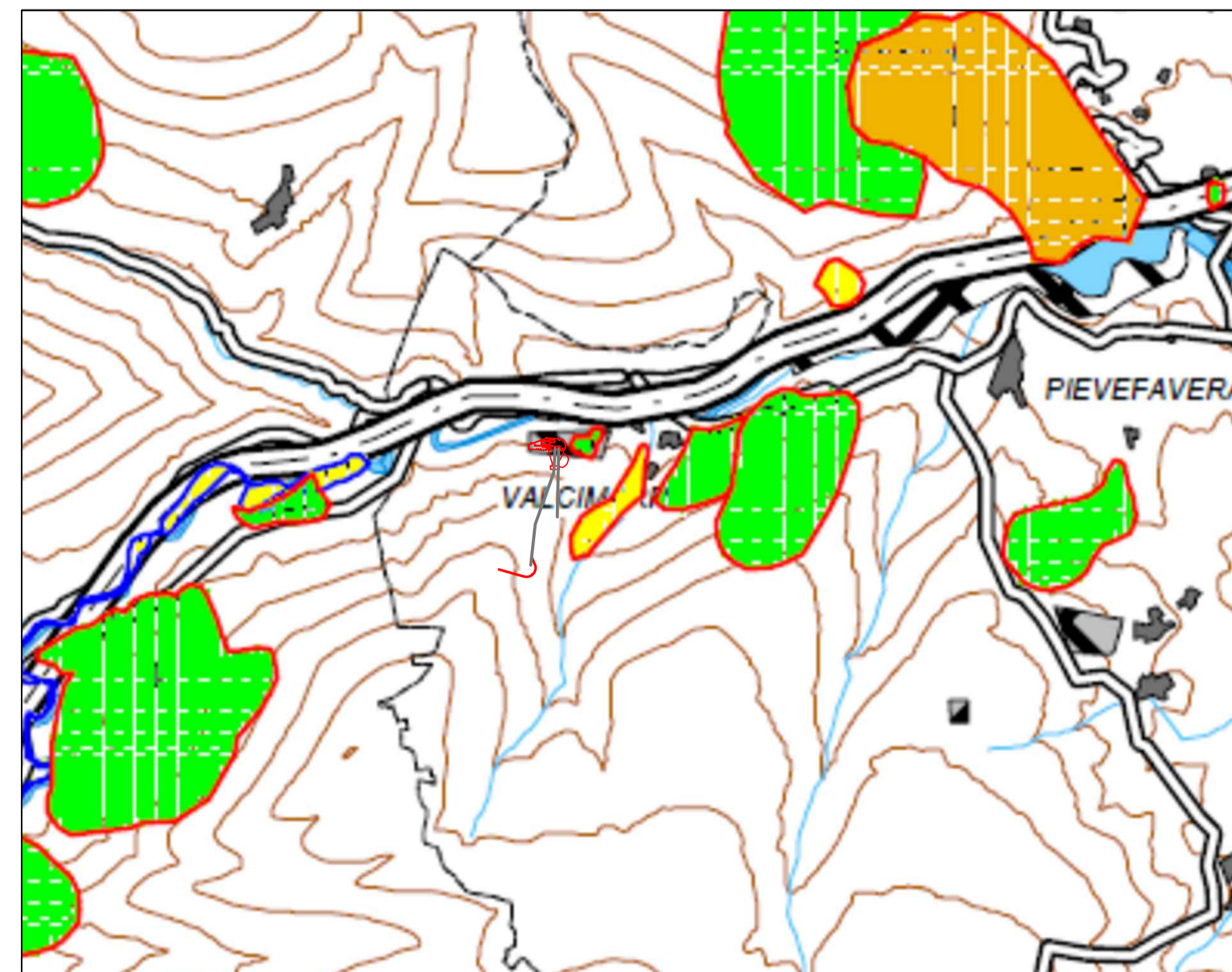
ESTRATTO CARTA DEI FENOMENI FRANOSI
PROVINCIA DI MACERATA
Scala 1:10.000



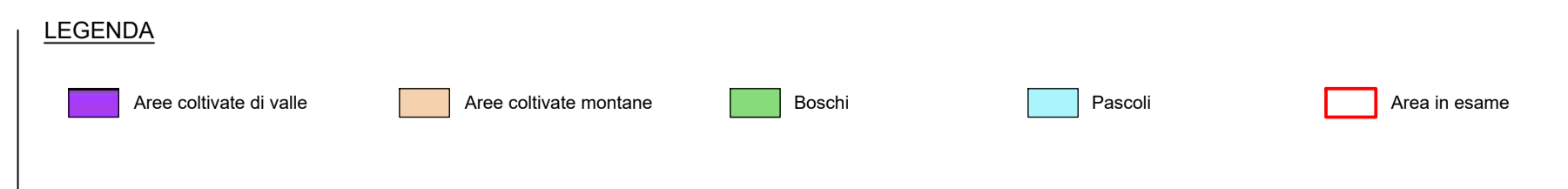
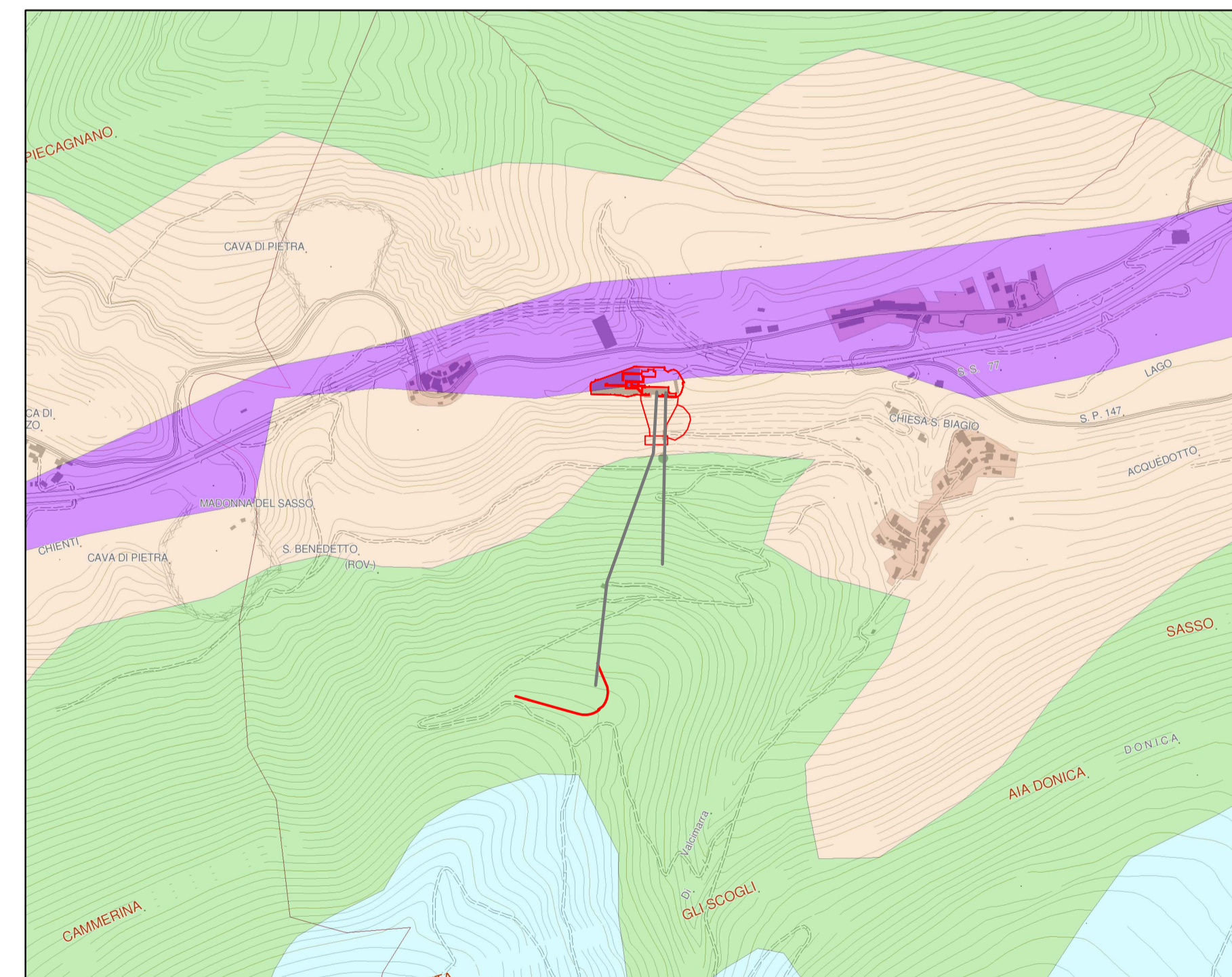
ESTRATTO PRG COMUNE DI CALDAROLA
Scala 1:10.000



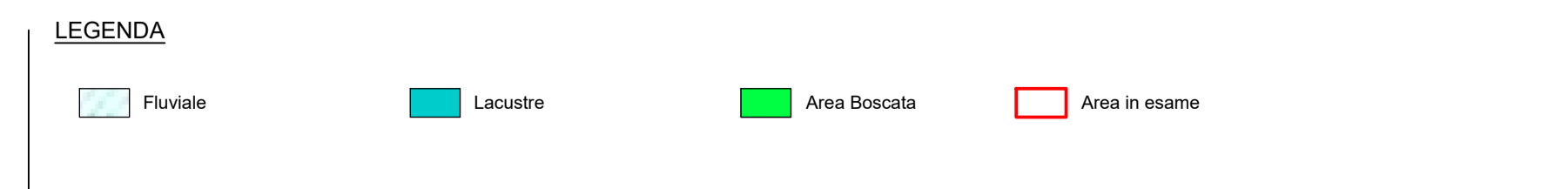
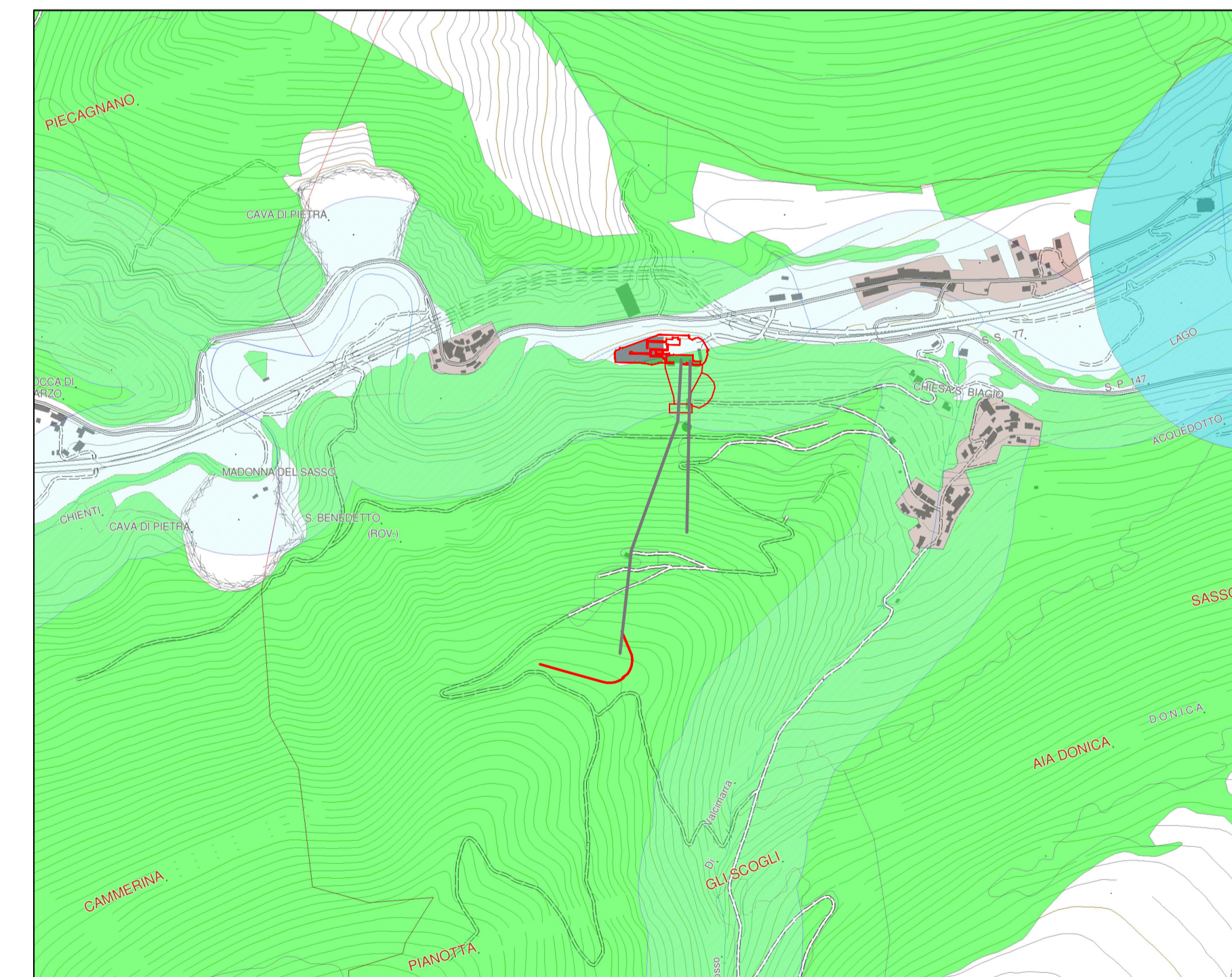
ESTRATTO CARTA DI SINTESI DEL DISSESTO IDROGEOLOGICO
(P.A.I. REGIONE MARCHE)
Scala 1:25.000



ESTRATTO P.T.C.
PROVINCIA DI MACERATA
Scala 1:10.000



ESTRATTO CARTA VINCOLI PAESAGGISTICI
PROVINCIA DI MACERATA
Scala 1:10.000



00	06.06.2022	Prima Emissione	A. Gradzi	C. Piccini/F. Magliari	A. Balestra
REV.	DATE	DESCRIPTION	PREPARED	CHECKED	APPROVED
CONTRATTURE LOCALI		PROJECT: IMPIANTO DI VALCIMARRA II INSTALLAZIONE DI NUOVO GRUPPO REVERSIBILE			
Lombardi		FILE NAME (EGP CODE): GRE.EEC.D.99.IT.H.17168.00.022.00	Lombardi CODE: 2021.0047.008-AM-GEN-DW-021		
enel Green Power		CLASSIFICATION: Public	FORMAT: A1	SCALE: var.	PLOT SCALE: 1:1
HGT Design & Execution		UTILIZATION SCOPE: Progetto Definitivo per Autorizzazione			
EGP VALIDATION		TITLE: CARTA DEI VINCOLI			
VALIDATED BY: G. Ripellino		EGP CODE			
VERIFIED BY: F. Podio		GROUP: GRE	FUNCTION: EEC	TYPE: D	COUNTRY: 9
COLLABORATORS:		ISSUER: I	TEC: T	PLANT: H	SYSTEM: 1
		PROGRESSIVE: 7	REVISION: 1	REVISION: 6	REVISION: 8
		REVISION: 0	REVISION: 0	REVISION: 2	REVISION: 2
		REVISION: 0	REVISION: 0	REVISION: 0	REVISION: 0

This document is property of Enel Green Power SpA. It is strictly forbidden to reproduce this document, in whole or in part, and to provide to others any related information without the previous written consent by Enel Green Power SpA.