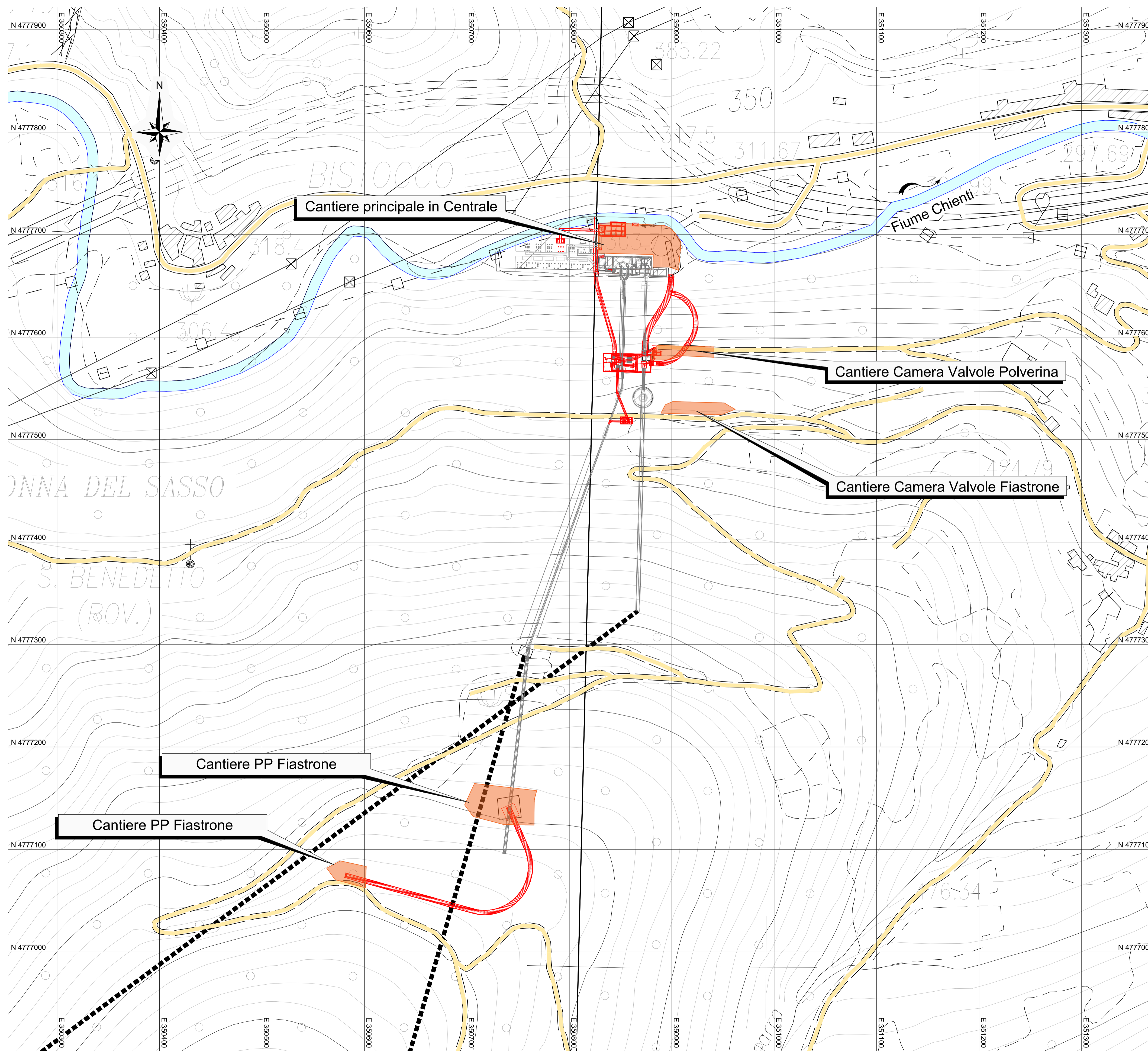
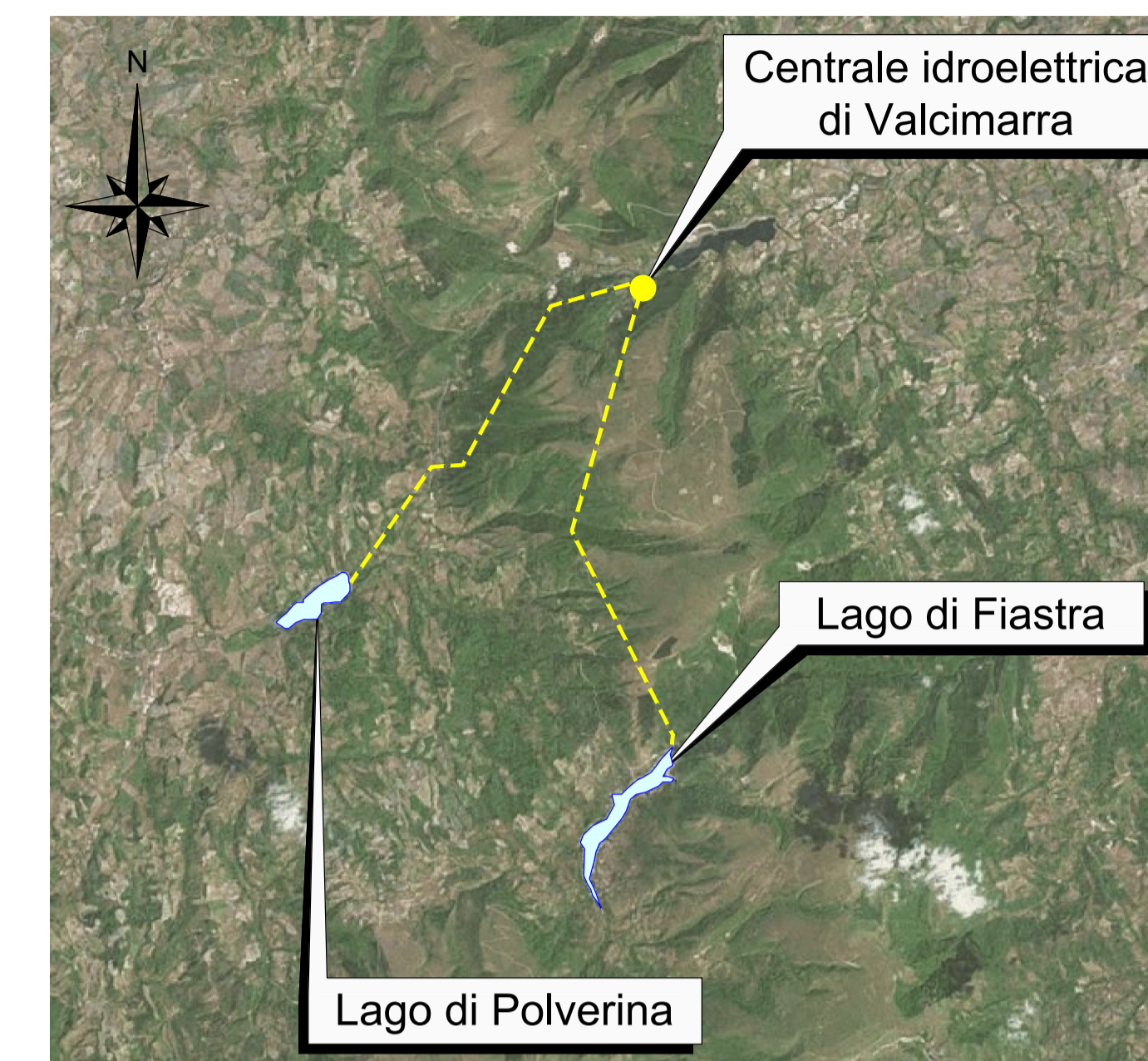


# Planimetria Impianto

(1:2'000)

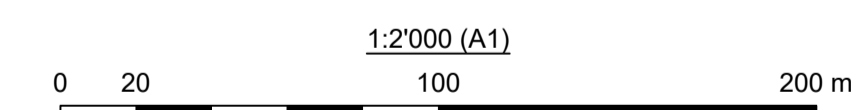


# Inquadramento generale



### Legenda:

- Acqua
- Viabilità esistenti
- Opere in Progetto
- Aree di cantiere



00	15.06.2022	Emissione per Revisione Cliente	C. Piccini	F. Maugliani	A. Balestra
REV.	DATE	DESCRIPTION	PREPARED	CHECKED	APPROVED
CONTRACTORS LOGO		PROJECT: <b>IMPIANTO DI VALCIMARRA II</b> <b>INSTALLAZIONE DI NUOVO GRUPPO REVERSIBILE</b>			
<b>Lombardi</b>		FILE NAME (EGP CODE): GRE.EEC.D.99.IT.H.17168.00.055.00	LOMBARDI CODE: 2021.0047.009-GC-GEN-DW-054		
<b>enel</b> Green Power		CLASSIFICATION: Public	FORMAT: A1	SCALE: 1:2'000	PLOT SCALE: 1:1
HGT Design & Execution		UTILIZATION SCOPE: <b>Progetto Definitivo per Autorizzazione</b>			
EGP VALIDATION		TITLE: <b>Stato di Progetto Piano di Cantierizzazione</b>			
VALIDATED BY: G. Ripellino		EGP CODE			
VERIFIED BY: Podio		GROUP	FUNCTION	TYPE	ISSUER
COLLABORATORS		GRE	EEC	D	99
		IT	H	17	168
		00	05	500	

This document is property of Enel Green Power SpA. It is strictly forbidden to reproduce this document, in whole or in part, and to provide to others any related information without the previous written consent by Enel Green Power SpA.