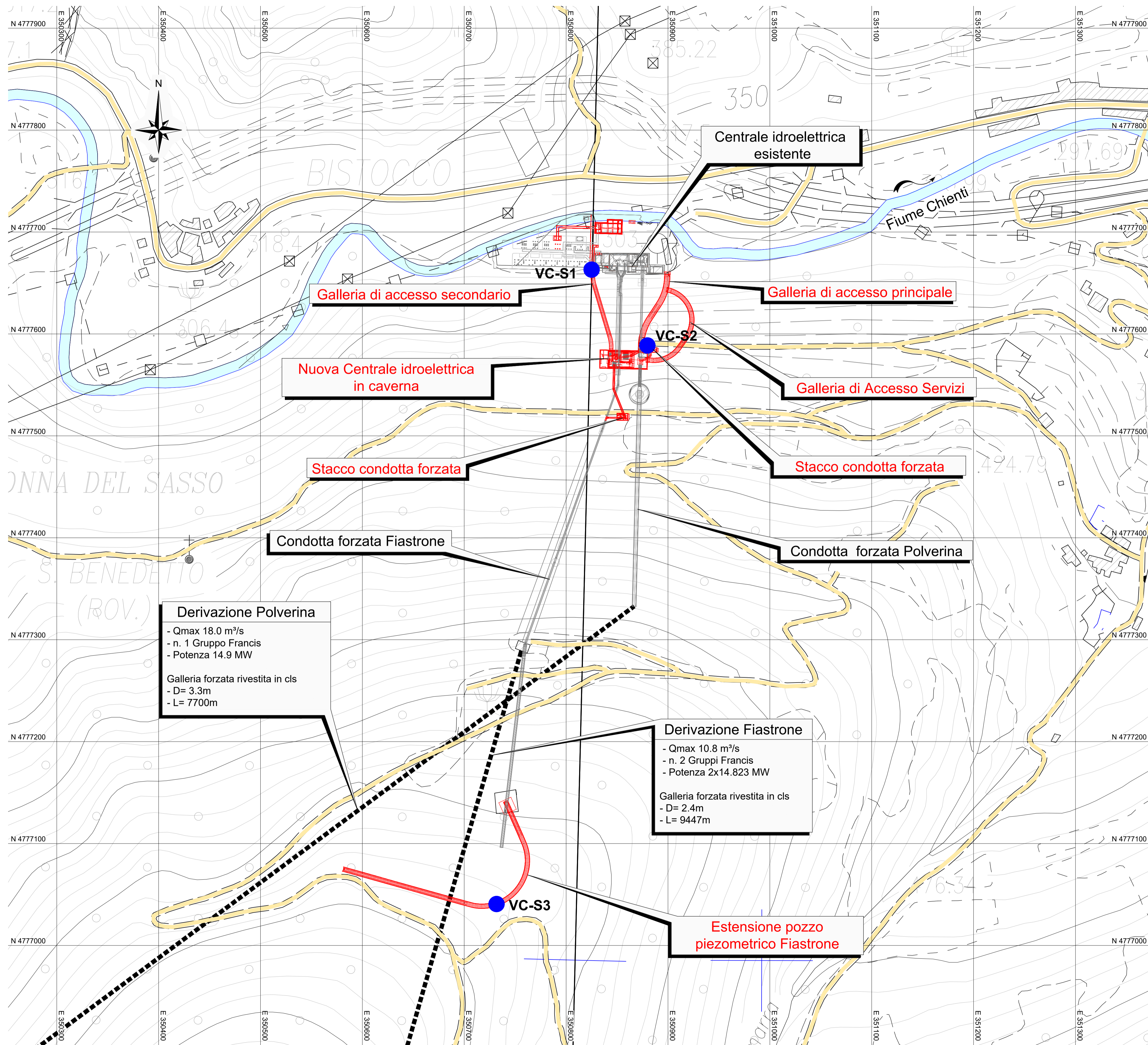
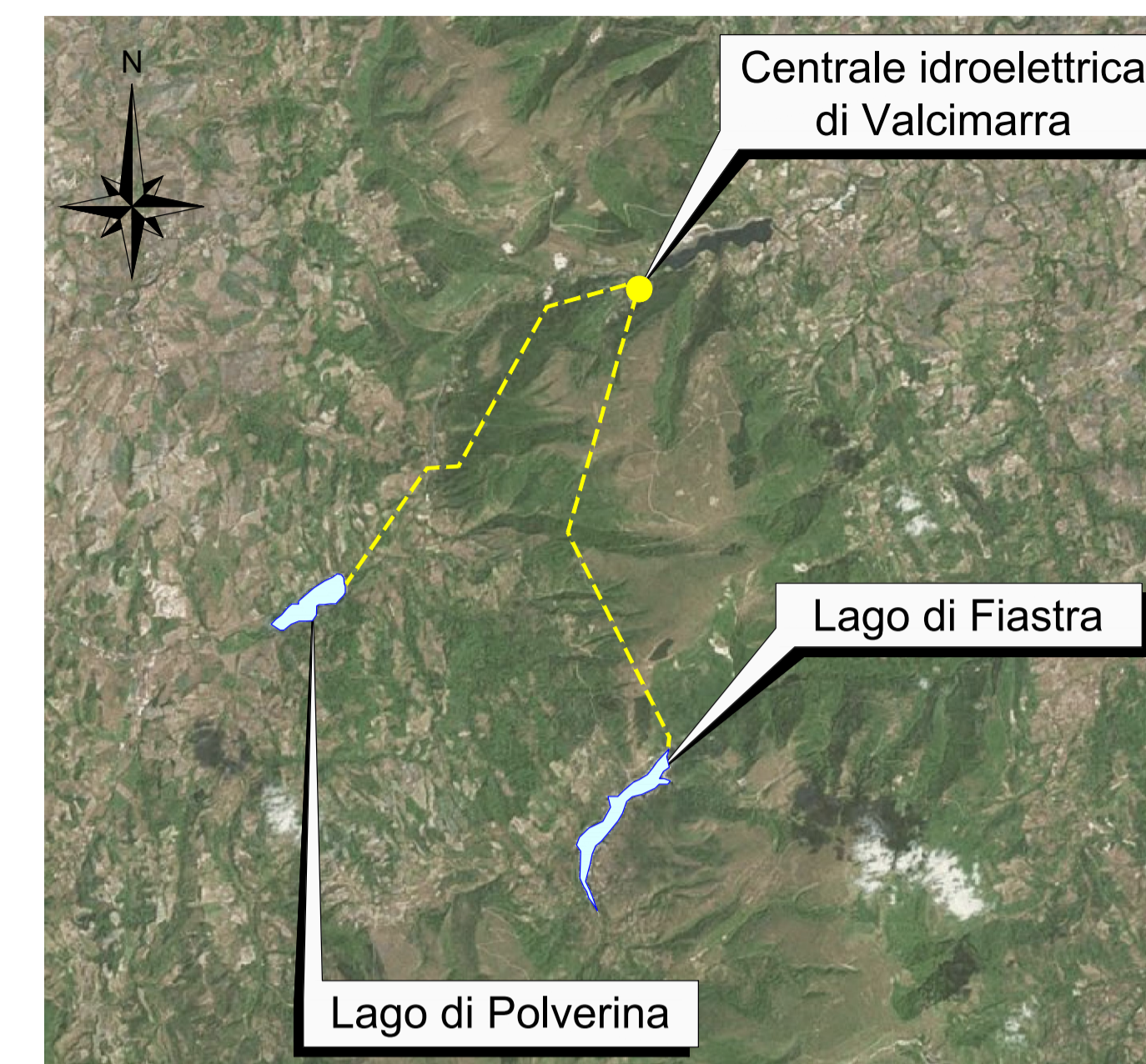


Planimetria con ubicazione delle indagini ambientali

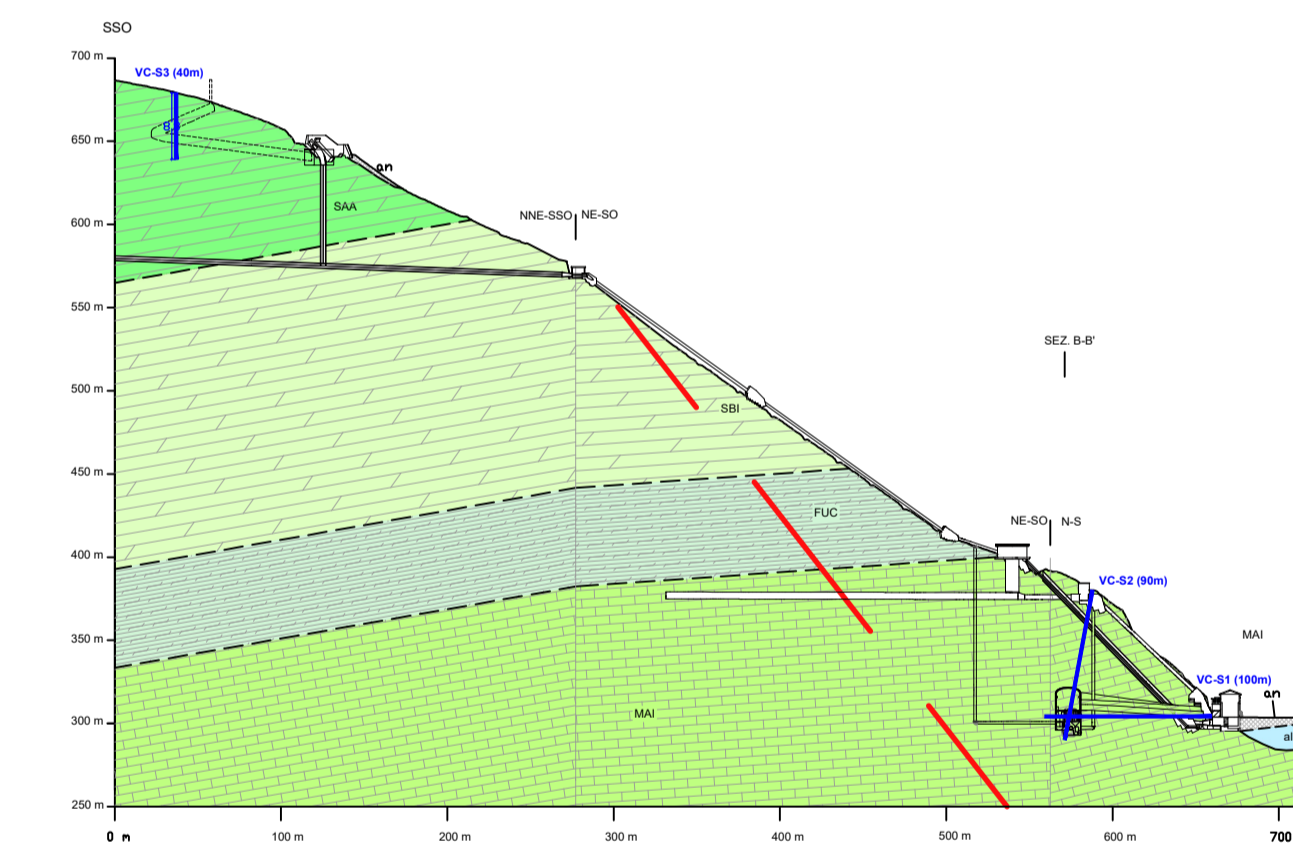
(1:2'000)



Inquadramento generale

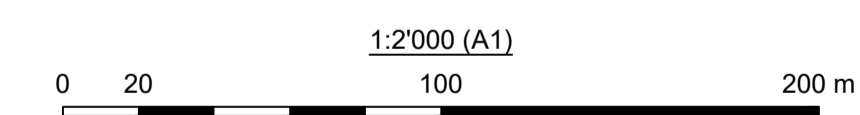


Sezione indagini ambientali



Legenda:

● Ubicazione indagini ambientali



00	18/07/2022	Emissione per Revisione Cliente	M. Toaldo	C. Luvè	M. Sartorelli
REV.	DATE	DESCRIPTION	PREPARED	CHECKED	APPROVED
CONTRACTORS LOGO		PROJECT: IMPIANTO DI VALCIMARRA II INSTALLAZIONE DI NUOVO GRUPPO REVERSIBILE			
Lombardi		FILE NAME (EGP CODE): GRE.EEC.D.99.IT.H.17168.00.079.00	LOMBARDI CODE: 2021.0047.008-AM-GEN-DW-078		
enel Green Power		CLASSIFICATION: Public	FORMAT: A1	SCALE: 1:2'000	PLOT SCALE: 1:1
HGT Design & Execution EGP VALIDATION		UTILIZATION SCOPE: Progetto Definitivo per Autorizzazione		TITLE: UBICAZIONE INDAGINI AMBIENTALI	
VALIDATED BY: Support Team		EGP CODE: GRE.EEC.D.99.IT.H.17168.00.079.00			
VERIFIED BY:		GROUP: GRE	FUNCTION: D	ISSUER: 99	COUNTRY: IT
COLLABORATORS:		PLANT: H	SYSTEM: 17	PROGRESSIVE: 168	REVISION: 0007900