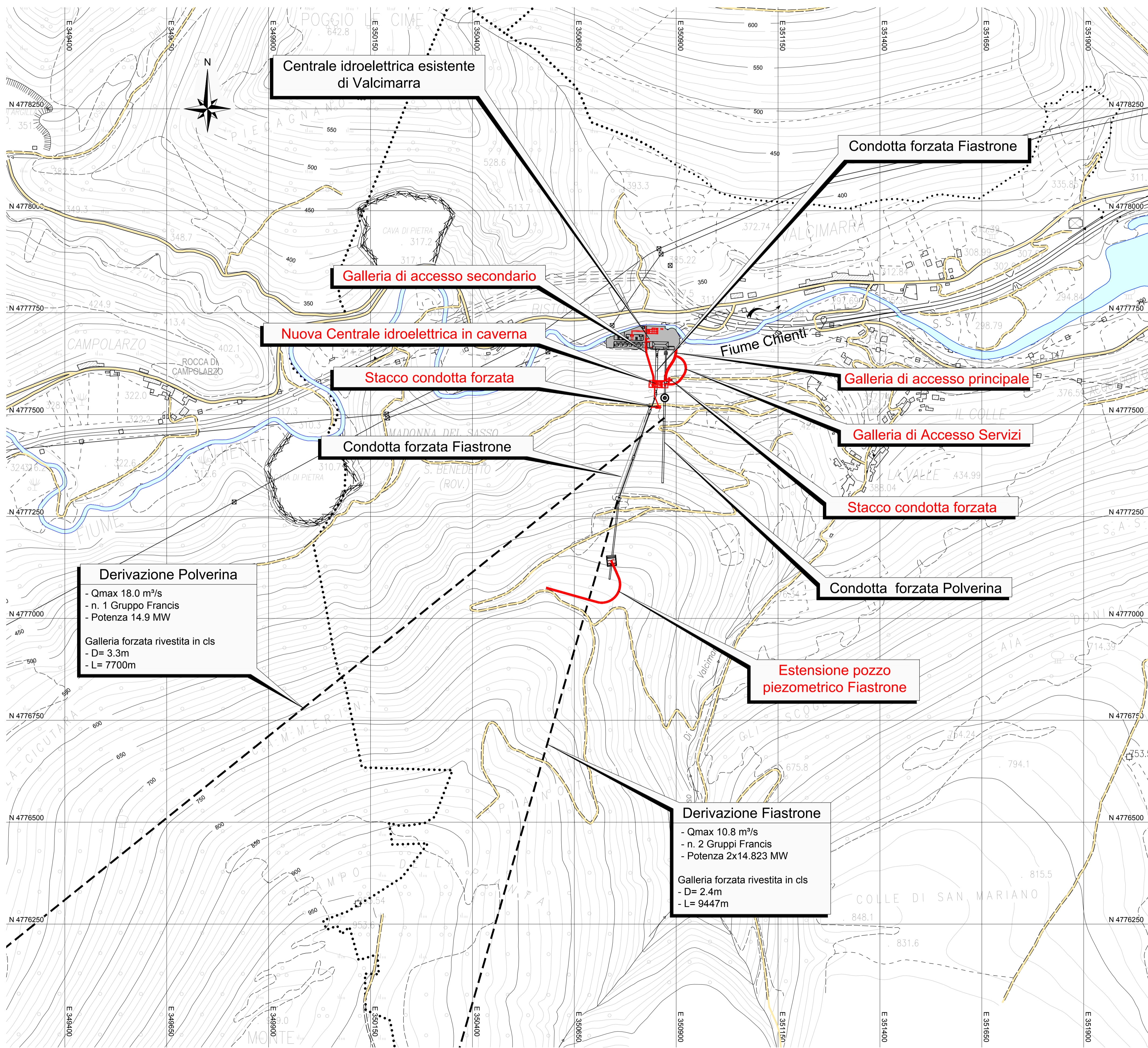


Inquadramento territoriale

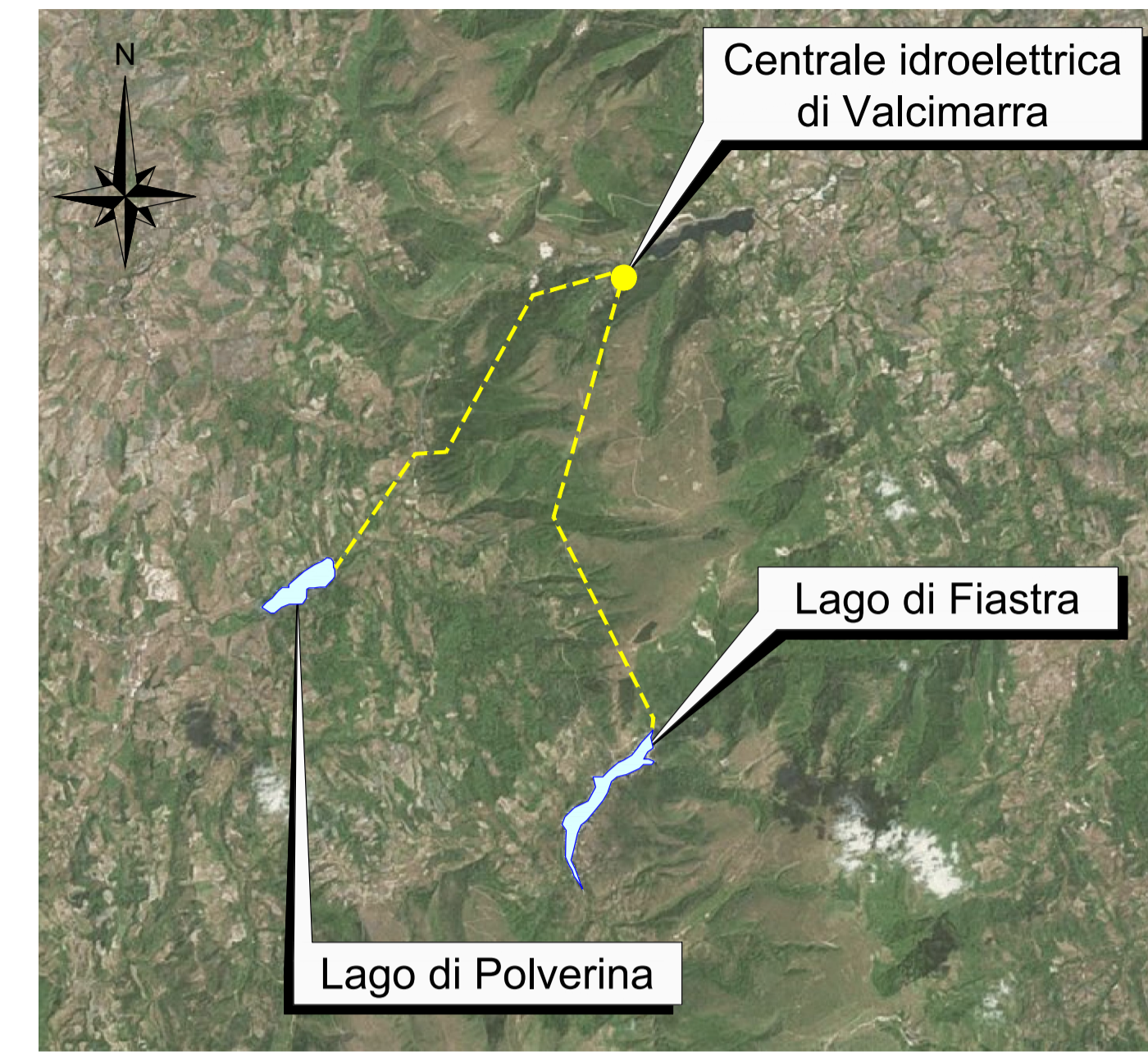
(1:5'000)



**Derivazione Polverina**  
 - Qmax 18.0 m<sup>3</sup>/s  
 - n. 1 Gruppo Francis  
 - Potenza 14.9 MW  
 Galleria forzata rivestita in cls  
 - D= 3.3m  
 - L= 7700m

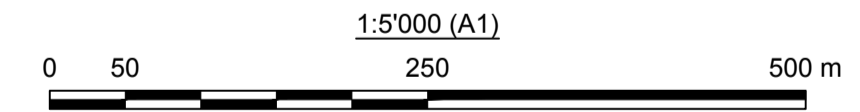
**Derivazione Fiastrone**  
 - Qmax 10.8 m<sup>3</sup>/s  
 - n. 2 Gruppi Francis  
 - Potenza 2x14.823 MW  
 Galleria forzata rivestita in cls  
 - D= 2.4m  
 - L= 9447m

Inquadramento generale



**Legenda:**  

 Acqua  
 Viabilità esistenti  
 Opere in Progetto



00	05/08/2022	Emissione per Revisione Cliente	L. Botiglieri	C. Piccini / F. Maugliani	A. Balestra
REV.	DATE	DESCRIPTION	PREPARED	CHECKED	APPROVED
Lombardi		PROJECT: <b>IMPIANTO DI VALCIMARRA II</b> <b>INSTALLAZIONE DI NUOVO GRUPPO REVERSIBILE</b>			
enel		FILE NAME (EGP CODE): GRE.EEC.D.99.IT.H.17168.00.104.00	LOMBARDY CODE: 2021.0047.009-GC-GEN-DW-016		
Green Power		CLASSIFICATION: Public	FORMAT: A1	SCALE: 1:5'000	PLOT SCALE: 1:1
HGT Design & Execution		UTILIZATION SCOPE: Progetto Definitivo per Autorizzazione	TITLE: Impatto Ambientale Inquadramento Territoriale dell'Intervento		
EGP VALIDATION		G. Ripellino			
VALIDATED BY:		EGP CODE			
VERIFIED BY:		GROUP	FUNCTION	TYPE	ISSUER
COLLABORATORS:		GREEC	D99	ITH	171680010400

This document is property of Enel Green Power SpA. It is strictly forbidden to reproduce this document, in whole or in part, and to provide to others any related information without the previous written consent by Enel Green Power SpA.