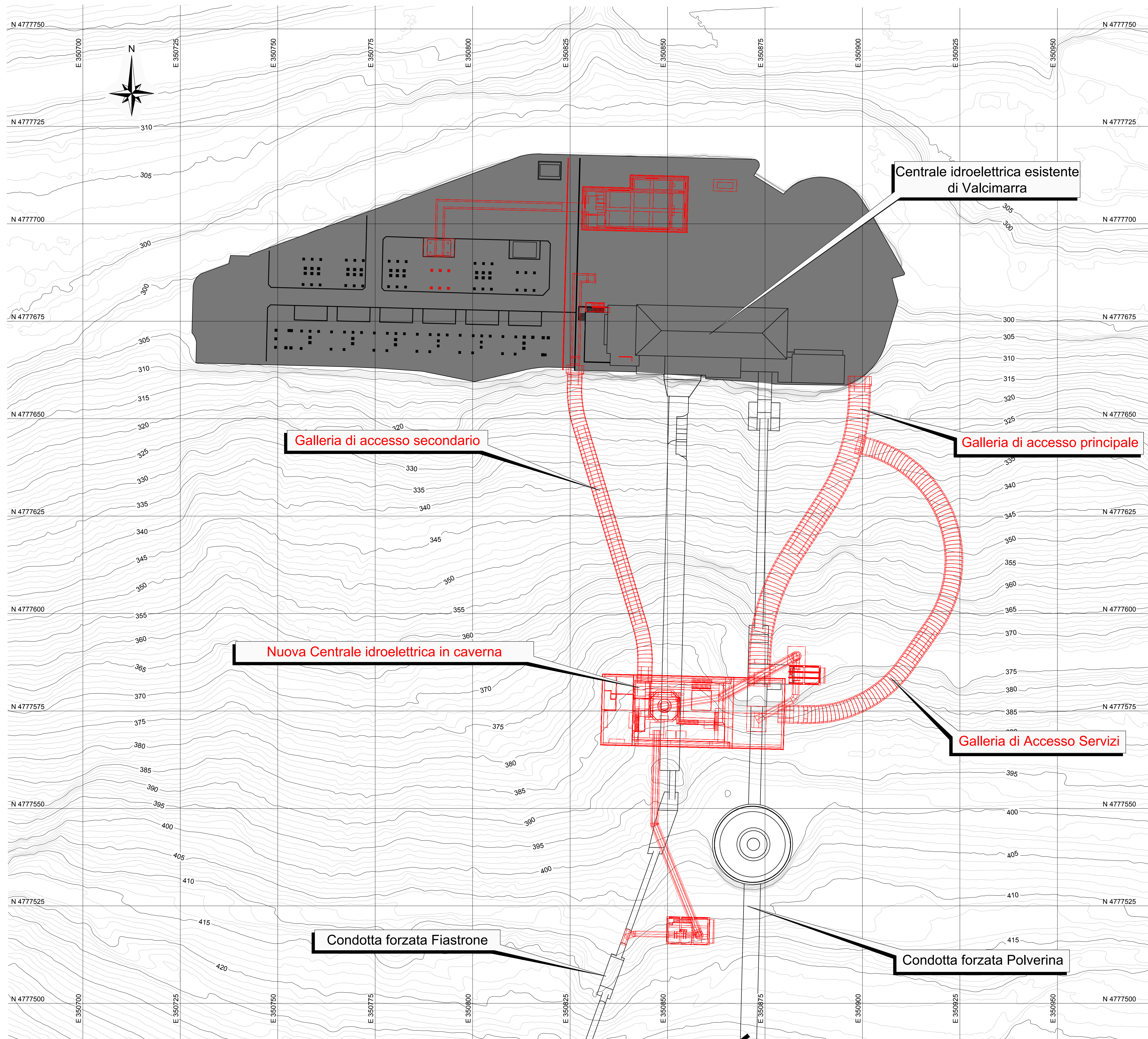
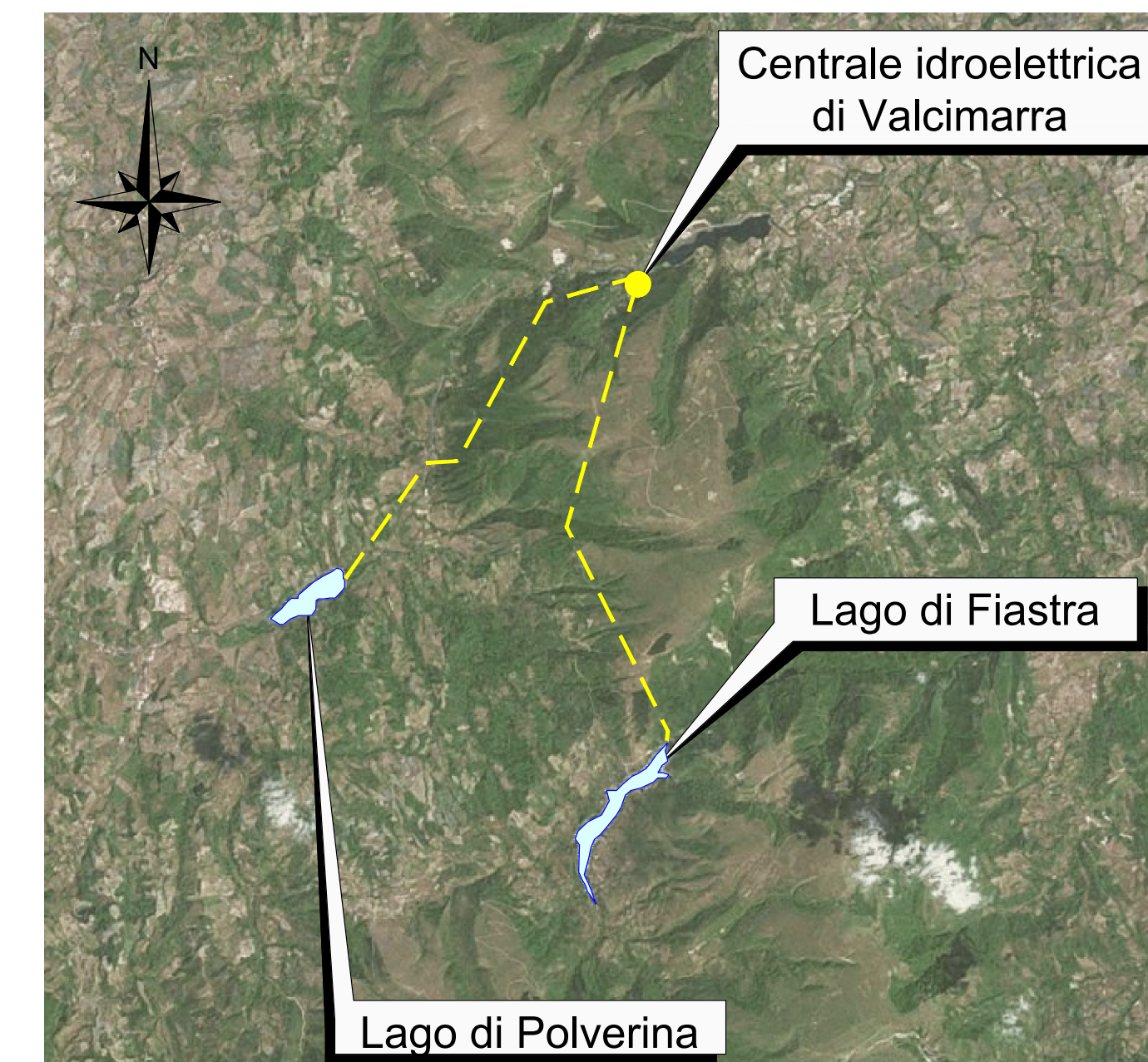


Rilievo planoaltimetrico ed ortofoto

(1:500)

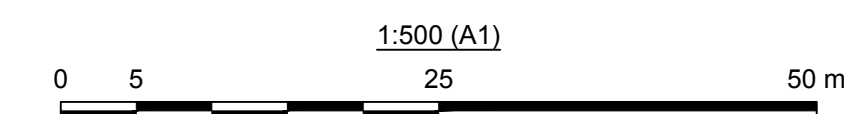


Inquadramento generale



Legenda:

Opere in Progetto



00	15/09/2022	Emissione per Revisione Cliente	A. Ricco	C. Piccini / F. Maugliani	A. Balestra
REV.	DATE	DESCRIPTION	PREPARED	CHECKED	APPROVED
		PROJECT: <b>IMPIANTO DI VALCIMARRA II</b> <b>INSTALLAZIONE DI NUOVO GRUPPO REVERSIBILE</b>			
		FILE NAME (EGP CODE): GRE.EEC.D.99.IT.H.17168.00.107.00 CLASSIFICATION: <b>Public</b>	LOMBARDOX CODE: 2021.0047.008-AM-GEN-DW-106 FORMAT: <b>A1</b>	SCALE: <b>1:500</b> PLOT SCALE: <b>1:1</b>	SHEET: <b>1 di 1</b>
HGT Design & Execution <b>EGP VALIDATION</b>		UTILIZATION SCOPE: <b>Progetto Definitivo per Autorizzazione</b> TITLE: <b>Impatto Ambientale Inquadramento Territoriale Base su rilievo LIDAR</b>			
VALIDATED BY: <b>G. Ripellino</b>		EGP CODE:			
VERIFIED BY: <b>Podio</b>		GROUP	FUNCTION	TYPE	ISSUER
COLLABORATORS:		GREEC	D99	ITH	171680010700

This document is property of Enel Green Power SpA. It is strictly forbidden to reproduce this document, in whole or in part, and to provide to others any related information without the previous written consent by Enel Green Power SpA.