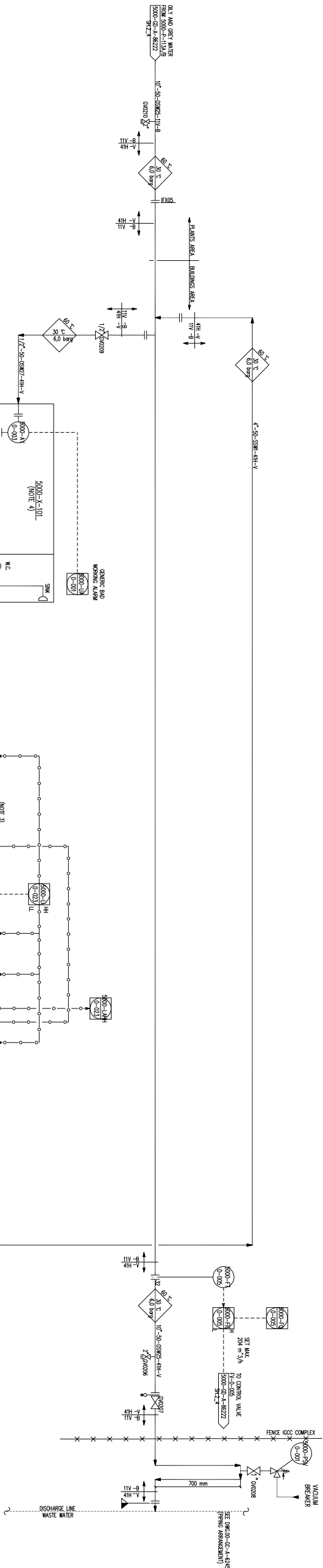


1A	1A	VENT TO ATMOSPHERE	1A	1A	INSTRUMENT FLUSHING OIL
2A	2A	NO FLARE	2A	2A	INSTRUMENT AIR
3A	3A	MAIN FLOOR	3A	3A	BOILER FEED WATER AT 140C
4A	4A	COOL CONDENSATE	4A	4A	LOW PRESSURE COOL CONDENSATE
5A	5A	COOL CONDENSATE	5A	5A	LOW PRESSURE VAPOR
6A	6A	COOL RETURN	6A	6A	LOW PRESSURE OIL CONDENSATE
7A	7A	COOL STEMS	7A	7A	LOW PRESSURE NITROGEN
8A	8A	COOLING WATER RETURN	8A	8A	LOW PRESSURE STEAM
9A	9A	COOLING WATER RETURN	9A	9A	BOILER FEED WATER AT 195C
10A	10A	COOLING WATER SPRAY	10A	10A	HEATING WATER AT 140C
11A	11A	CHEMICAL STREAMS	11A	11A	HEATING WATER AT 195C
12A	12A	DEMINERALIZED WATER	12A	12A	HEATING WATER AT 140C
13A	13A	POTABLE WATER	13A	13A	MEDIUM PRESSURE COOL CONDENSATE
14A	14A	PILOT GAS	14A	14A	MEDIUM PRESSURE STEAM
15A	15A	FLUSHING OIL	15A	15A	OUT STREAMS
16A	16A	NO CONDENSATE	16A	16A	PROCESS CONDENSATE WATER
17A	17A	HIGH PRESSURE CLEAN OIL	17A	17A	DECONTAMINATED WATER
18A	18A	HIGH PRESSURE CLEAN WATER	18A	18A	MACHINERY COOLING WATER RETURN
19A	19A	HIGH PRESSURE VAPOR	19A	19A	MACHINERY COOLING WATER SPRAY
20A	20A	HIGH PRESSURE VAPOR	20A	20A	SEAL OIL RETURN
21A	21A	HIGH PRESSURE OIL COND.	21A	21A	SEAL OIL SUPPLY
22A	22A	HOT OIL RETURN	22A	22A	SAMPLE STREAMS
23A	23A	HOT OIL SUPPLY	23A	23A	ACCEIDENTALLY OIL STREAMS
24A	24A	HIGH PRESSURE NITROGEN	24A	24A	UTILITY AIR
25A	25A	HIGH PRESSURE STEAM	25A	25A	UTILITY WATER
26A	26A	NO COLLECTING SYSTEM	26A	26A	VENT LOW PRESSURE STEAM
27A	27A		27A	27A	

[illegible]

GENERAL NOTES

- 1) FOR NOTES SYMBOLS & DETAILS SEE DWG.0-50-01.
- 2) ALL INSTRUMENT TACS SHOWN ON THIS PAID HAVE DIGITS "5000" AS A PREFIX
- 3) FOR SAMPLE POINT ARRANGEMENTS SEE DWG.N° 00-CA-A-60063.

- 1) LSI START 1st PUMP A OR B, LSHI START 2nd PUMP A OR B, LSI STOP BOTH PUMPS
- 2) DELETED.
- 3) START/STOP COMMANDS AND STATUS RUN, INDICATION AVAILABLE ON A UNIQUE DISC POINT. LOCAL CONTROL STATION IS ALSO PROVIDED.
- 4) AUTOMATIC SAMPLING STATION (CONTIGENERATED THER) PACKAGE UNIT.

1	25-01-14	MAUREN EUGENIO DOMESTO 512/80228	LA FLORA	RODRIGO PARRA
2	25-01-14	AS BELL M 15/97/93	LA FLORA	MAUR
3	31-01-99	RECEIVED AS BUILT	REPORT	REPORT
4	31-01-99	RECEIVED AS BUILT	REPORT	REPORT
5	25-04-98	RECEIVED WHERE INDICATED AND NUMBER ACC.	REPORT	REPORT
6	31-10-97	RECEIVED AS PER PLAN. RECONSTRUCTION	REPORT	REPORT
7	15-06-97	KEY FOR ROAD PAVEN.	REPORT	REPORT
8	15-06-97	REPAIR, REVISION	REPORT	REPORT
9	DATA	DESCRIPTION	REPORT	REPORT
10			CONTR.	APPR.

Questo disegno non può essere né riprodotto né comunicato a terzi, senza l'approvazione della ISAB Energy.

