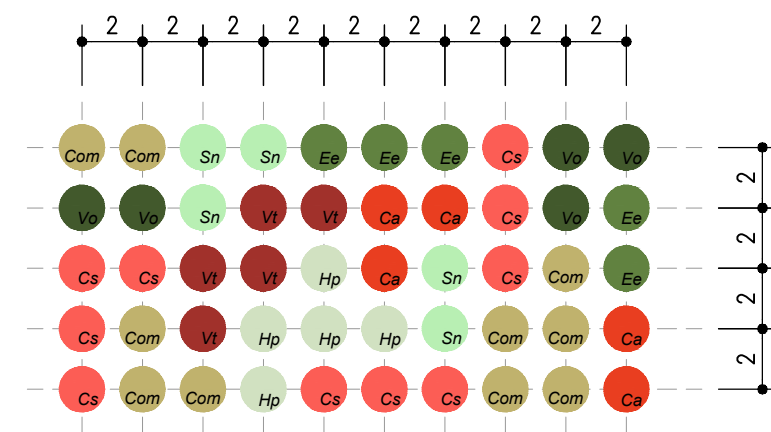


IAN - FILARE ARBUSTIVO - ESPOSIZIONE PREVALENTE A NORD SCARPATE ASPI

Arbusti vaso 18-24 cm

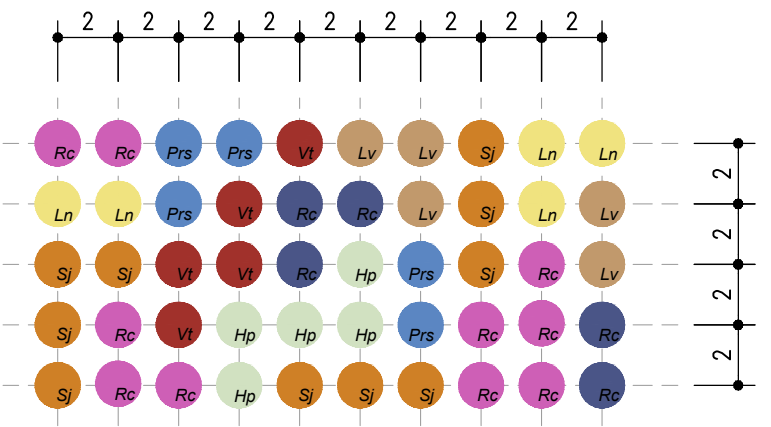


ARBUSTI

- List of shrubs for IAN: Sambucus nigra 10% Sn, Viburnum opulus 10% Vo, Cornus mas 20% Com, Euonymus europaeus 10% Ee, Cornus sanguinea 20% Cs, Corylus avellana 10% Ca, Viburnum tinus 10% Vt, Hypericum perforatum 10% Hp.

IAS - INVERDIMENTO ARBUSTIVO - ESPOSIZIONE PREVALENTE A SUD SCARPATE ASPI

Arbusti vaso 18-24 cm

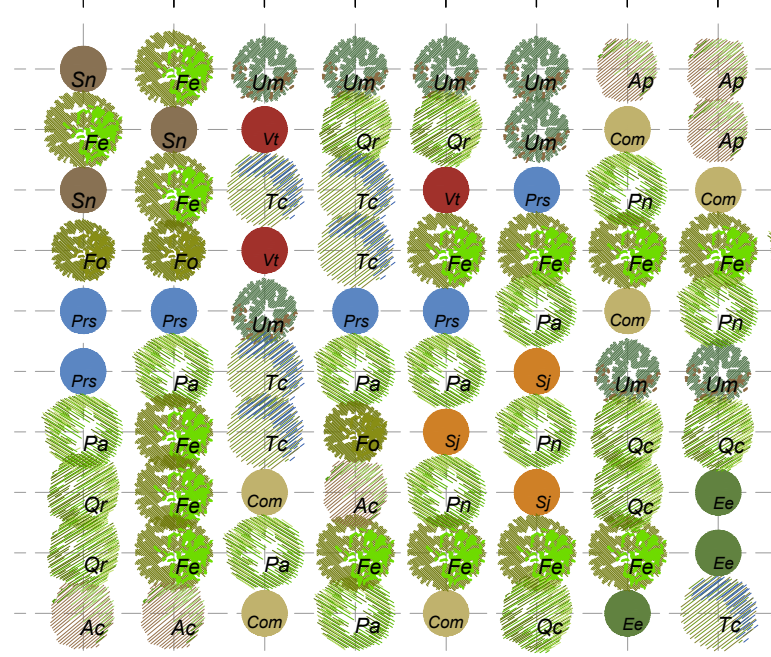


ARBUSTI

- List of shrubs for IAS: Rosa canina 20% Rc, Prunus spinosa 10% Prs, Spartium junceum 20% Sj, Laurus nobilis 10% Ln, Ligustrum vulgare 10% Lv, Rhamnus cathartica 10% Rc, Viburnum tinus 10% Vt, Hypericum perforatum 10% Hp.

RIMI - RIMBOSCHIMENTO DI MITIGAZIONE ECOLOGICA (70% - 30%)

Alberi e arbusti forestali h >100 cm

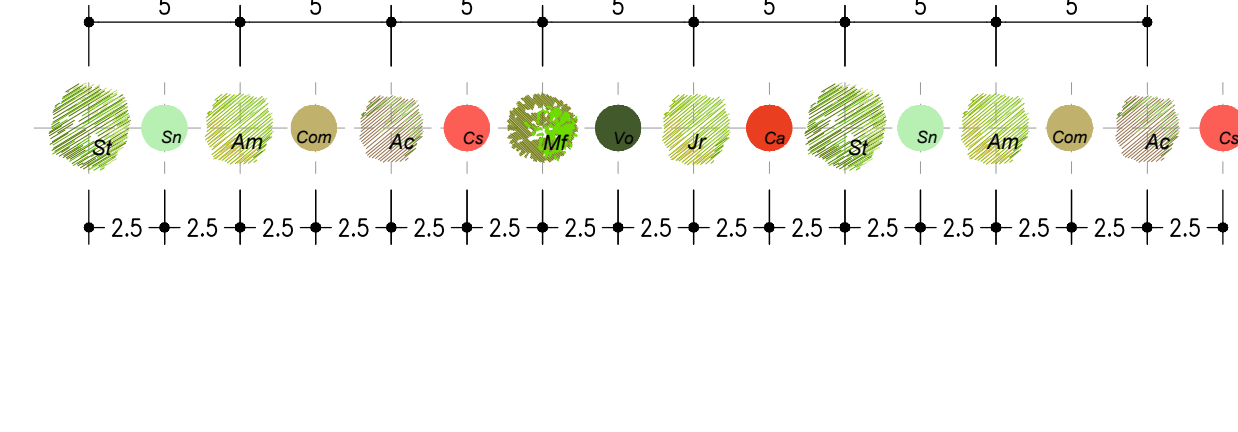


ALBERI (70%)

- List of trees for RIMI: Quercus robur (I) 10% Qr, Sambucus nigra 20% Sn, Populus alba (I) 10% Pa, Cornus mas 20% Com, Ulmus minor (II) 10% Um, Prunus spinosa 20% Prs, Fraxinus excelsior (II) 20% Fe, Spartium junceum 20% Sj, Tilia cordata (II) 10% Tc, Viburnum tinus 10% Vt, Acer platanoides (I) 10% Ap, Euonymus europaeus 10% Ee, Fraxinus ornus (II) 5% Fo, Quercus cerris (I) 10% Qc, Populus nigra (I) 10% Pn, Acer campestre (II) 5% Ac.

FAAN - FILARE ARBUSTIVO - ESPOSIZIONE PREVALENTE A NORD SCARPATE ASPI

Alberi già sviluppati circ. 14-16 cm, arbusti vaso 18-24 cm

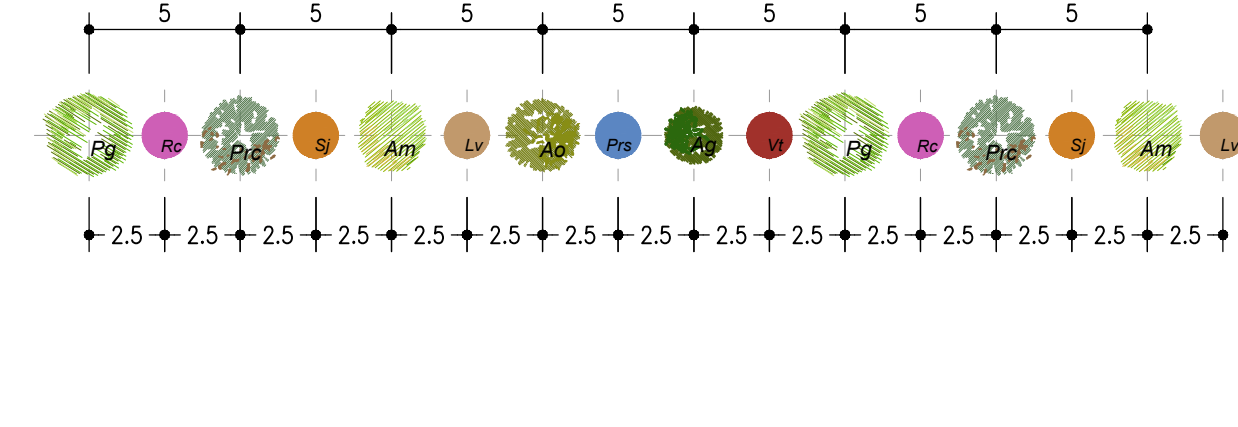


ALBERI

- List of trees for FAAN: Sorbus torminalis (III) 10% St, Sambucus nigra 10% Sn, Acer monspessulanum (III) 10% Am, Cornus mas 10% Com, Acer campestre (III) 10% Ac, Cornus sanguinea 10% Cs, Malus flurbondia (III) 10% Mf, Viburnum opulus 10% Vo, Juglans regia (I) 10% Jr, Corylus avellana 10% Ca.

FAAS - FILARE ARBUSTIVO - ESPOSIZIONE PREVALENTE A SUD SCARPATE ASPI

Alberi già sviluppati circ. 14-16 cm, arbusti vaso 18-24 cm

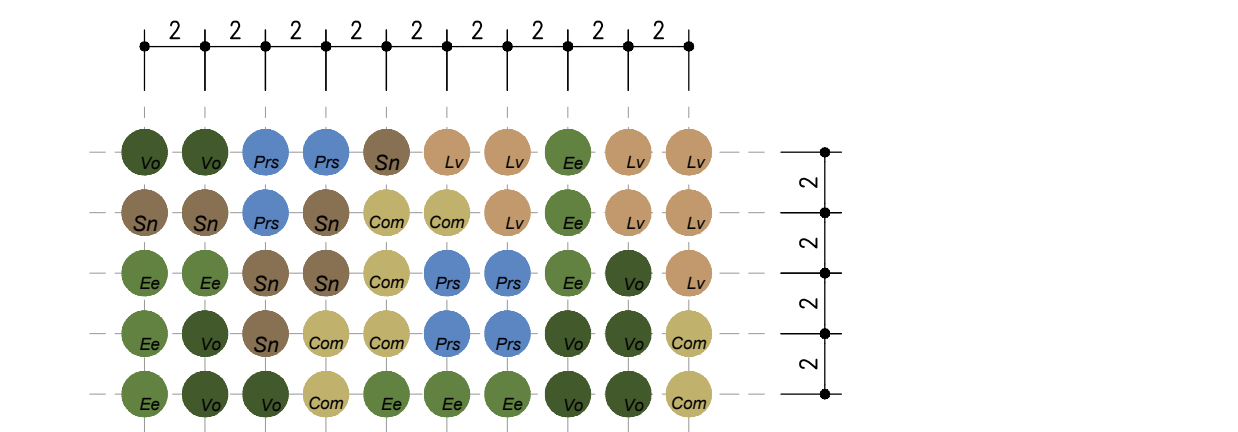


ALBERI

- List of trees for FAAS: Punica granatum (III) 10% Pg, Rosa canina 10% Rc, Prunus cerasifera (III) 10% Prc, Spartium junceum 10% Sj, Acer monspessulanum (III) 10% Am, Ligustrum vulgare 10% Lv, Acer opalus (III) 10% Ao, Prunus spinosa 10% Prs, Alnus glutinosa (III) 10% Ag, Viburnum tinus 10% Vt.

IAF - INVERDIMENTO ARBUSTIVO - FLUVIALE

Arbusti vaso 18-24 cm

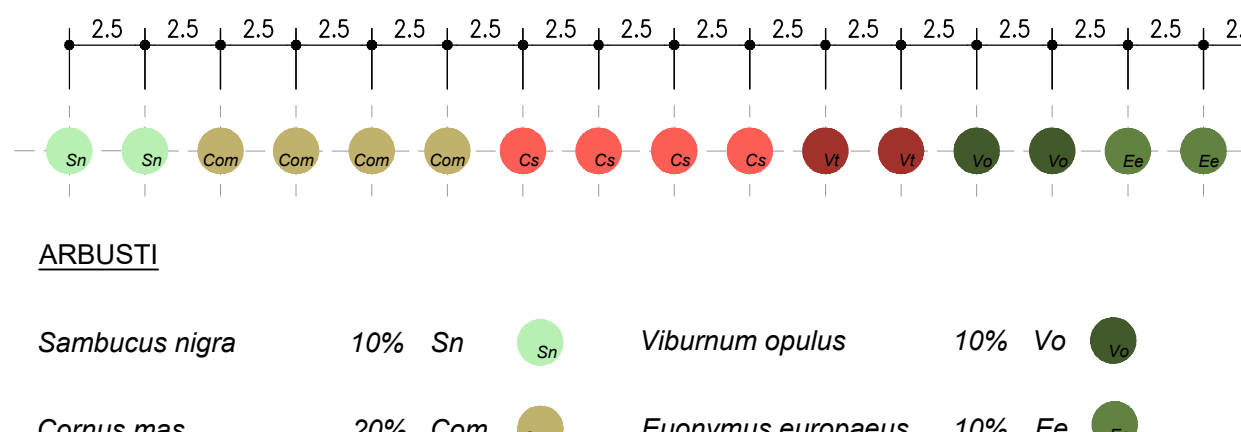


ARBUSTI

- List of shrubs for IAF: Sambucus nigra 14% Sn, Viburnum opulus 20% Vt, Cornus mas 16% Com, Euonymus europaeus 20% Ee, Prunus spinosa 14% Prs, Ligustrum vulgare 16% Lv.

FAN - FILARE ARBUSTIVO - ESPOSIZIONE PREVALENTE A NORD SCARPATE ASPI

Arbusti vaso 18-24 cm

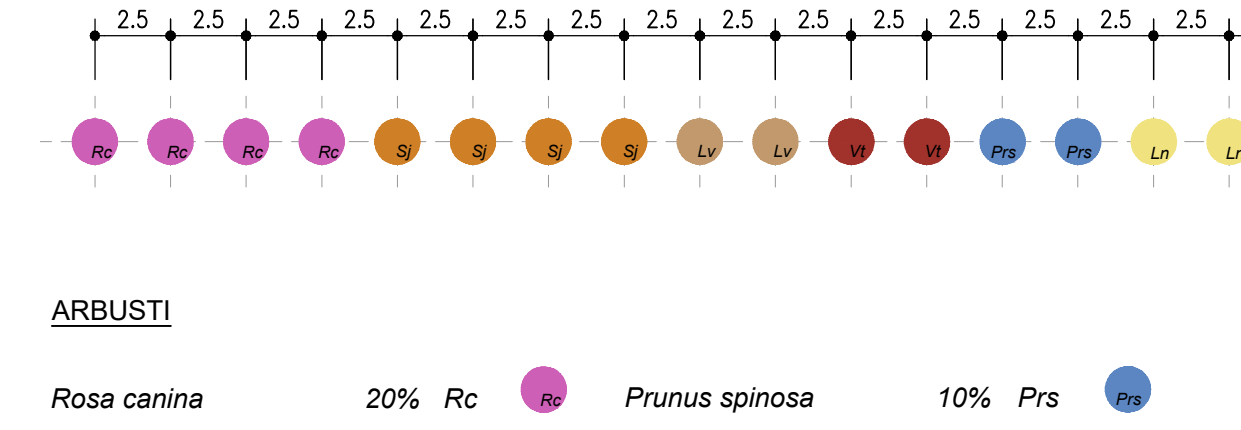


ARBUSTI

- List of shrubs for FAN: Sambucus nigra 10% Sn, Viburnum opulus 10% Vo, Cornus mas 20% Com, Euonymus europaeus 10% Ee, Cornus sanguinea 20% Cs, Corylus avellana 10% Ca, Viburnum tinus 10% Vt, Hypericum perforatum 10% Hp.

FAS - FILARE ARBUSTIVO - ESPOSIZIONE PREVALENTE A SUD SCARPATE ASPI

Arbusti vaso 18-24 cm

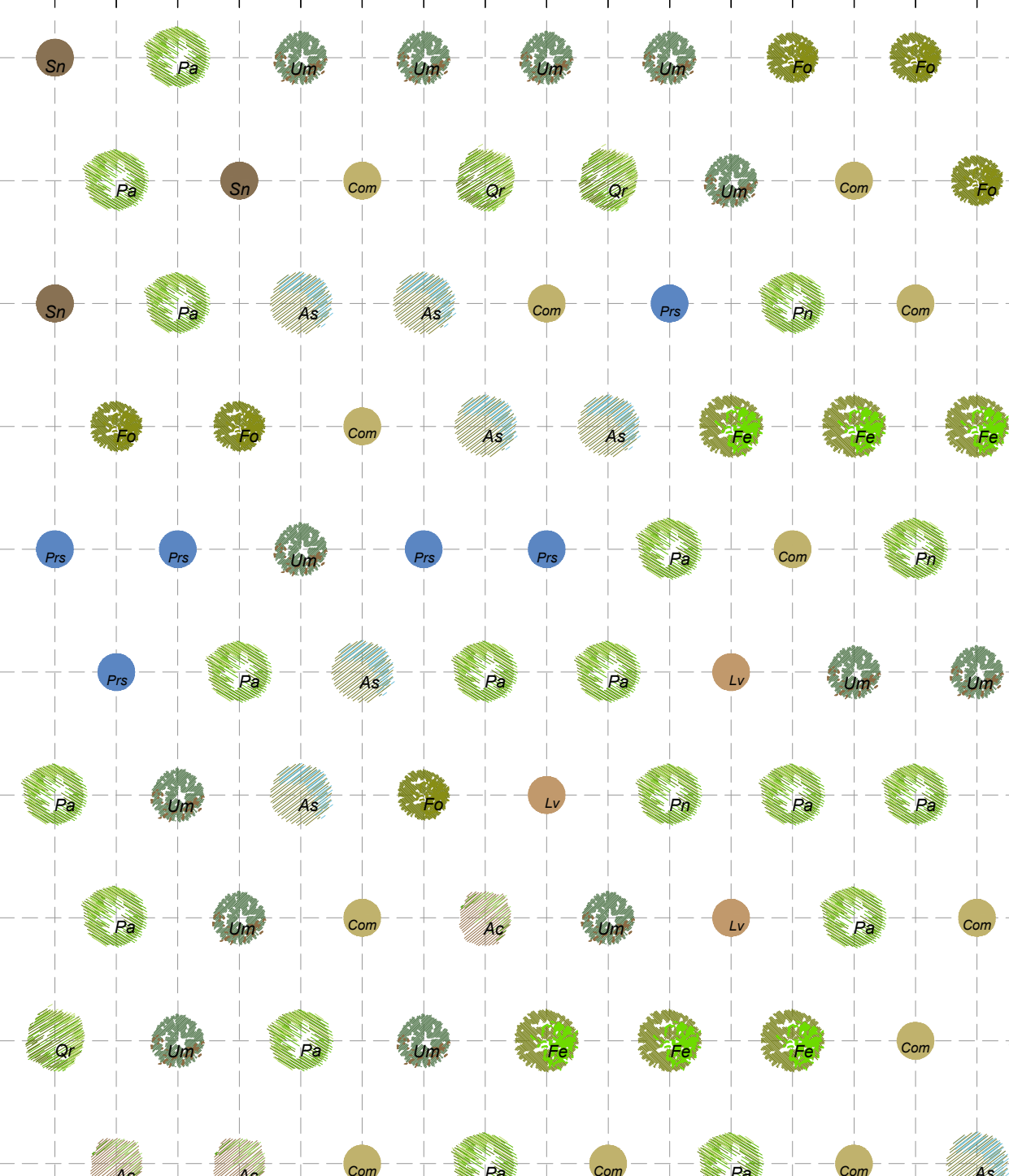


ARBUSTI

- List of shrubs for FAS: Rosa canina 20% Rc, Prunus spinosa 10% Prs, Spartium junceum 20% Sj, Laurus nobilis 10% Ln, Ligustrum vulgare 10% Lv, Rhamnus cathartica 10% Rc, Viburnum tinus 10% Vt, Hypericum perforatum 10% Hp.

RIMIF - RIMBOSCHIMENTO DI MITIGAZIONE ECOLOGICA FLUVIALE (70% - 30%)

Alberi e arbusti forestali h >100 cm



ALBERI (70%)

- List of trees for RIMIF: Quercus robur (I) 6% Qr, Sambucus nigra 6% Sn, Populus alba (I) 15% Pa, Cornus mas 12% Com, Ulmus minor (II) 15% Um, Prunus spinosa 6% Prs, Fraxinus excelsior (II) 6% Fe, Ligustrum vulgare 6% Lv, Fraxinus ornus (II) 5% Fo, Salix alba (I) 12% Sa, Populus nigra (I) 5% Pn, Acer campestre (II) 6% Ac.

ARBUSTI (30%)

Table with columns for species name, u.d.m., and OVINF1 through OVINF8. It lists various tree and shrub species and their corresponding values for different categories.

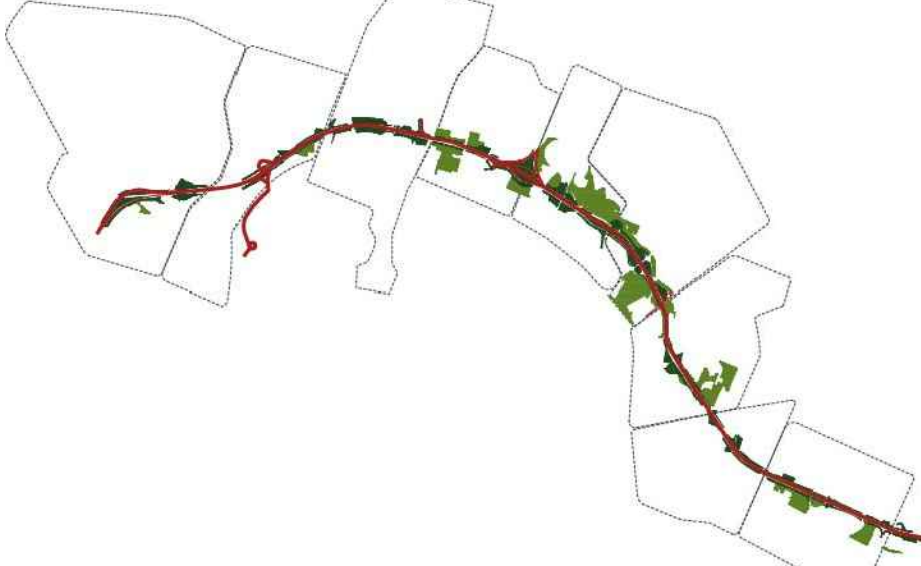
NOTE GENERALI - FASI ESECUTIVE

LE DIFFERENZE DEVONO ESSERE COMUNICATE IMMEDIATAMENTE AI PROGETTISTI PRIMA DI PROCEDERE. DEVONO ESSERE CONSIDERATE SOLO LE DIMENSIONI UTILIZZATE NEGLI ELABORATI. L'IMPRESA DEVE CONTROLLARE TUTTE LE DIMENSIONI IN OPERA.

TUTTE LE DIMENSIONI SONO ESPRESSE IN METRICA.

PRESCRIZIONI ESECUTIVE

KEY-MAP



AUTOSTRADA (A14): BOLOGNA - BARI -TARANTO TRATTO: BOLOGNA BORGO PANIGALE - BOLOGNA SAN LAZZARO

POTENZIAMENTO IN SEDE DEL SISTEMA AUTOSTRADALE E TANGENZIALE DI BOLOGNA "PASSANTE DI BOLOGNA"

PROGETTO ESECUTIVO

IT - INTERVENTI TERRITORIALI

SISTEMAZIONI A PARCO GENERALE OPERE A VERDE

ABACO DELLE OPERE A VERDE

Table with columns for project roles: IL PROGETTISTA SPECIALISTICO, IL RESPONSABILE INTEGRAZIONE PRESTAZIONI SPECIALISTICHE, and IL DIRETTORE TECNICO, with their respective names and titles.

Table with columns for project identification: CODICE IDENTIFICATIVO, RIFERIMENTO PROGETTO, and RIFERIMENTO ELABORATO, including codes like 111465, 0001, PE, IT, S000, and 0V000.

Table with columns for approvals: VISTO DEL COMMITTENTE, VISTO DEL CONCEDENTE, and VISTO DEL RESPONSABILE UNICO DEL PROCEDIMENTO.