


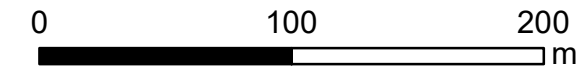
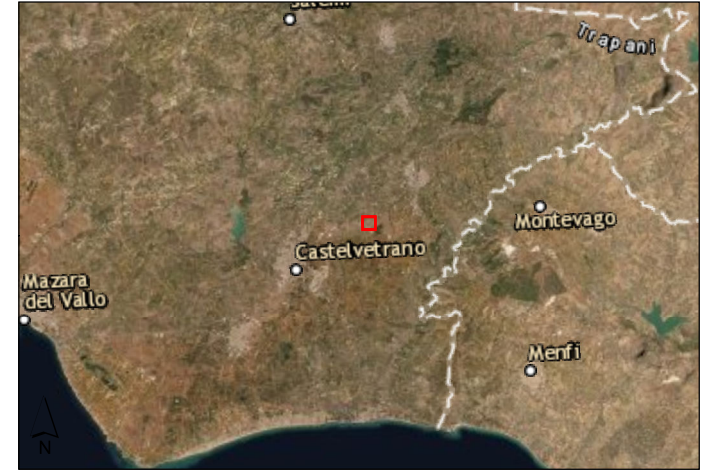


LEGENDA

-  CONNESSIONE AEREA (ESISTENTE)
-  PROPOSTA PRELIMINARE SOTTOSTAZIONE ONSHORE
-  LIMITI PARTICELLE CATASTALI




Sistema di coordinate: WGS 1984 UTM Zone 32N
 Proiezione: Transverse Mercator
 Datum: WGS 1984



Progetto: **Relazione di Scoping
 Progetto Ocean Winds - Ostro**

Tavola: **07** **Inquadramento catastale della sottostazione onshore preliminare**

Scala:	1:3000	Codice progetto:	0629284	Preparato da:					
Rev.:	00	Data:	mar 2022						
Formato:	A3	Layout:	-	Disegnato da:	DAC	PM:	SIP	File:	07_Catasto_SottostazioneOnshore

Z:\000000_0819999\0629284_OW_Offshore_S.I.EA_Scoping_Reports_Italy\SPP\Project\01_A\MapaSicilia\Ostro\07_Catasto_SottostazioneOnshore.mxd