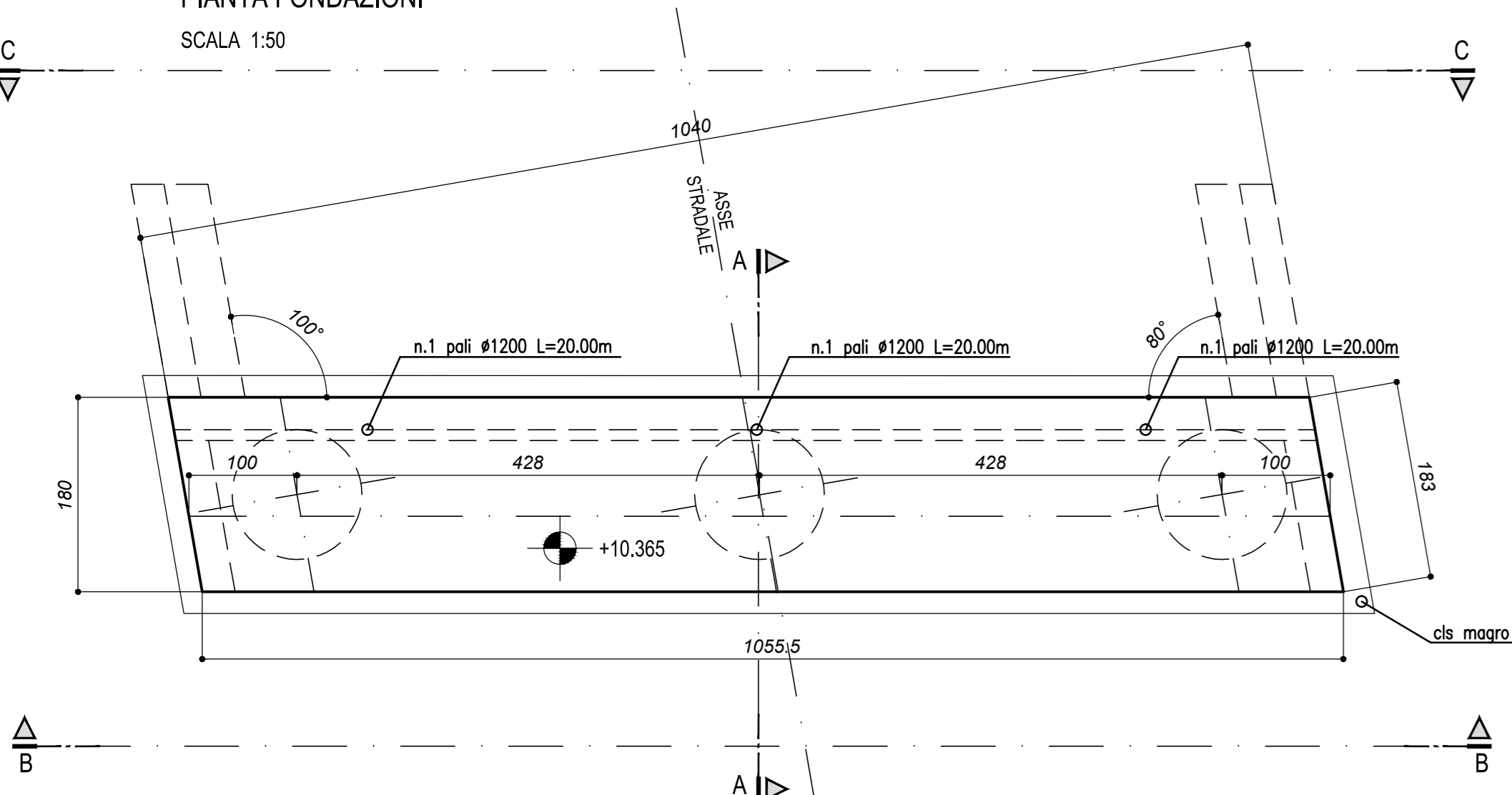
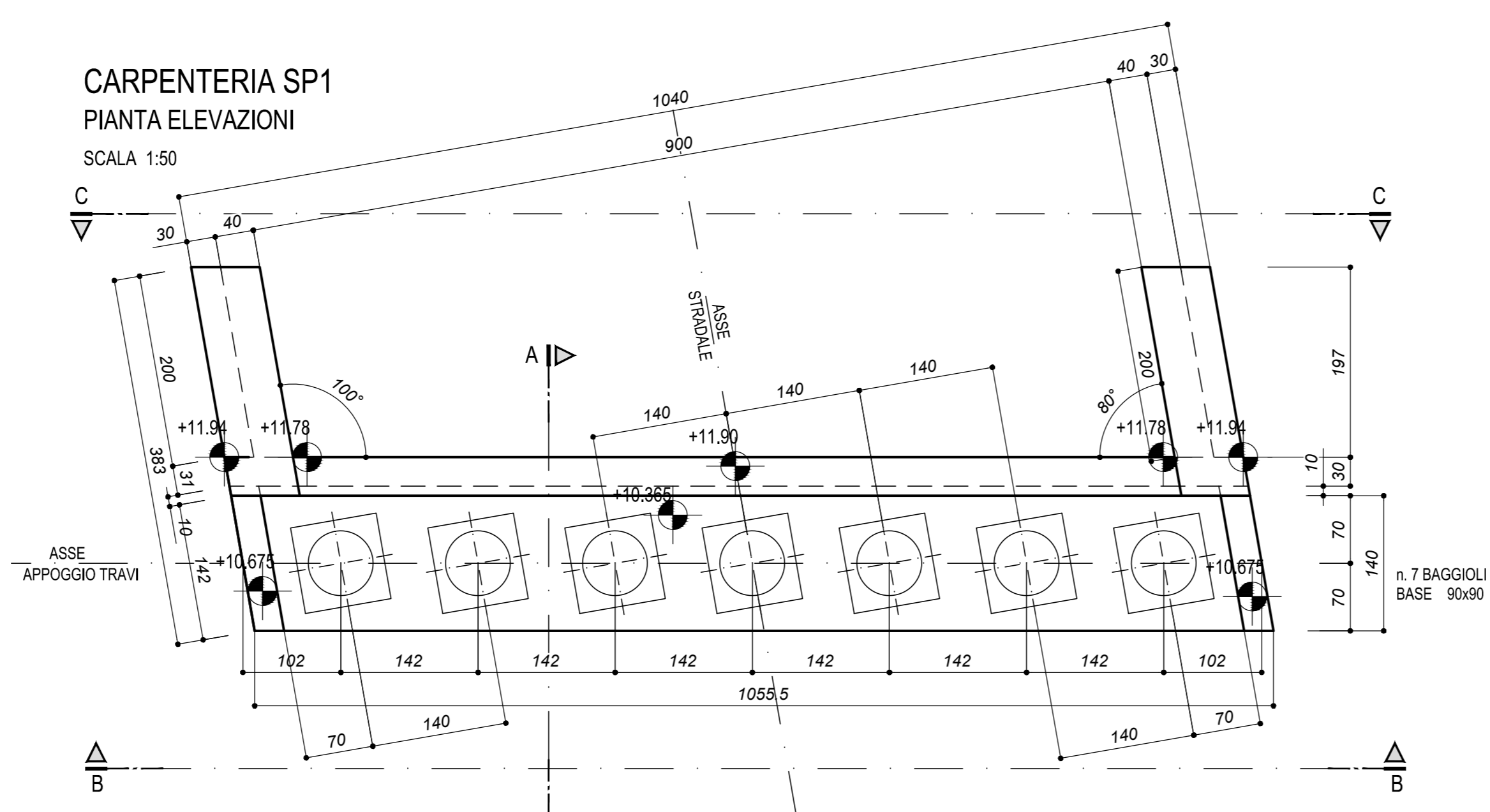


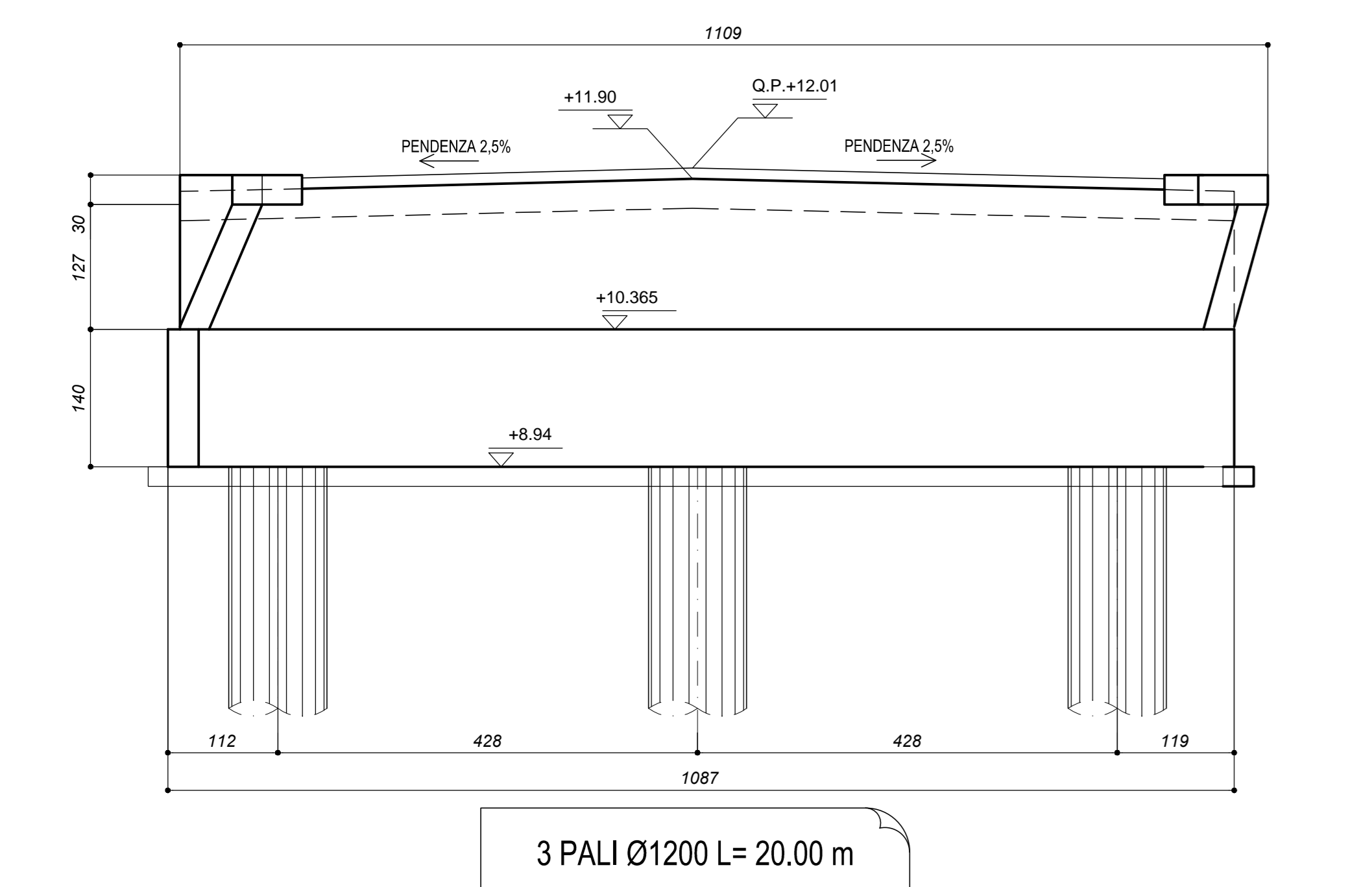
CARPENTERIA SP1
PIANTA FONDAZIONI
SCALA 1:50



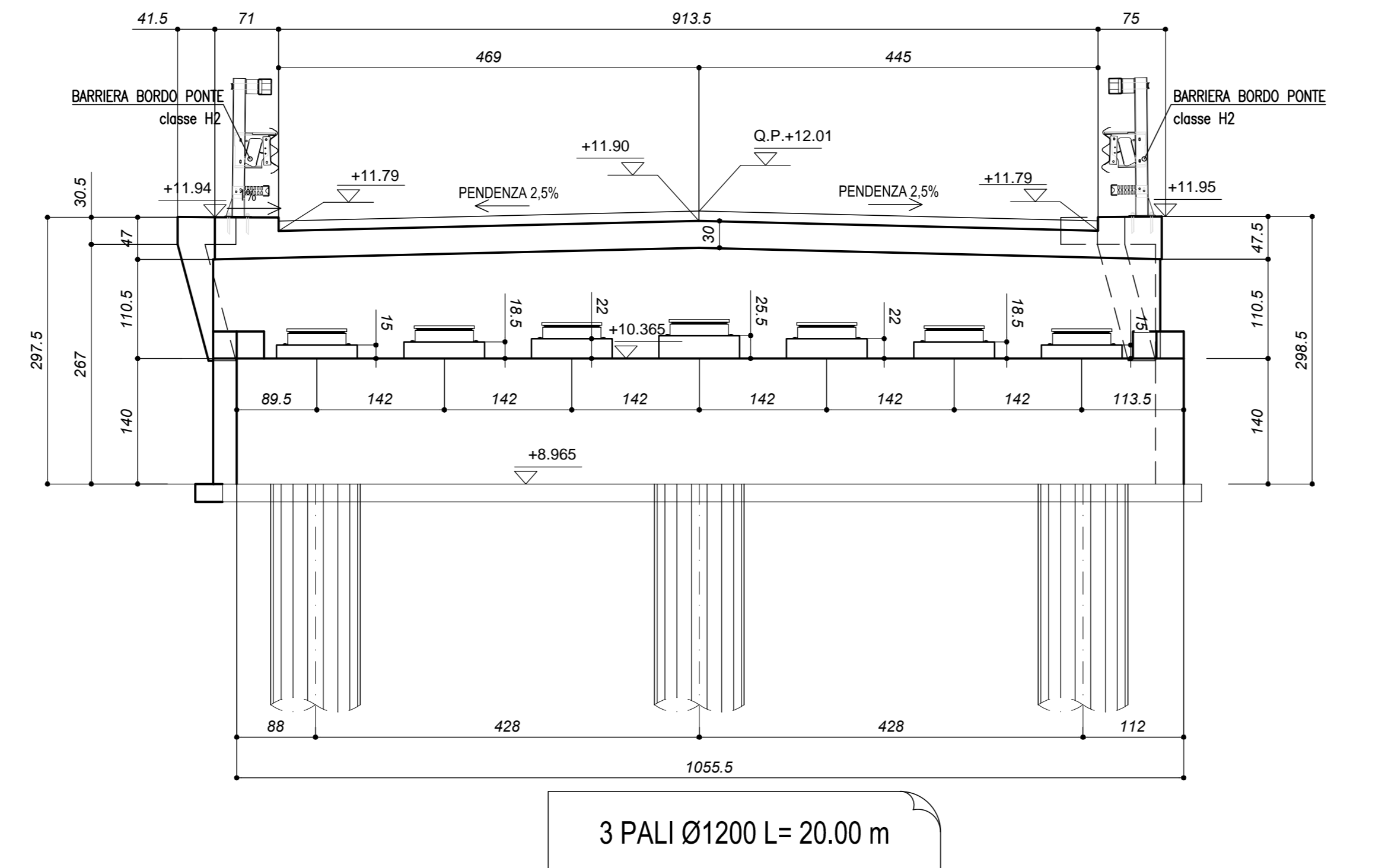
CARPENTERIA SP1
PIANTA ELEVAZIONI
SCALA 1:50



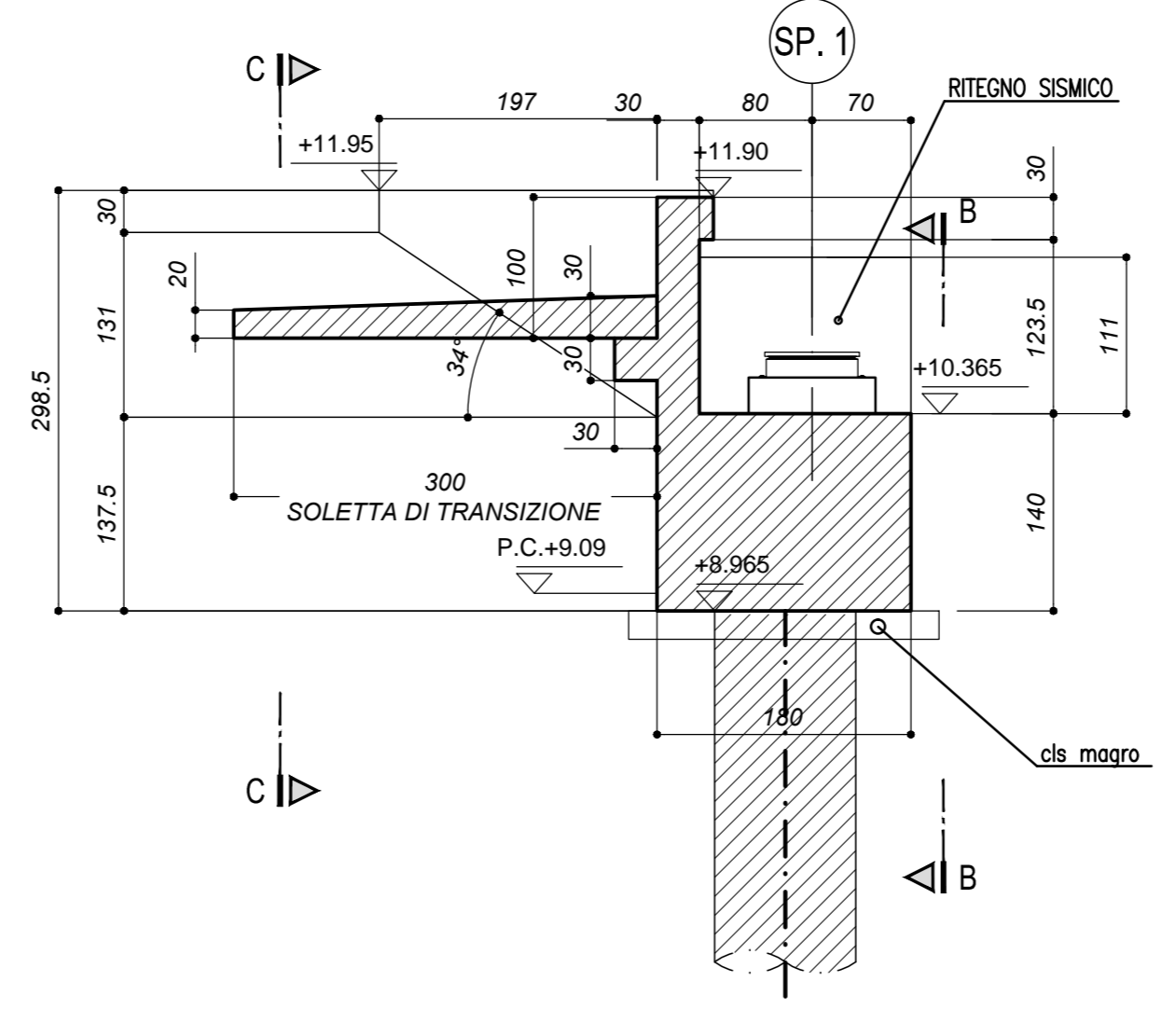
CARPENTERIA SP1
PROSPETTO C
SCALA 1:50



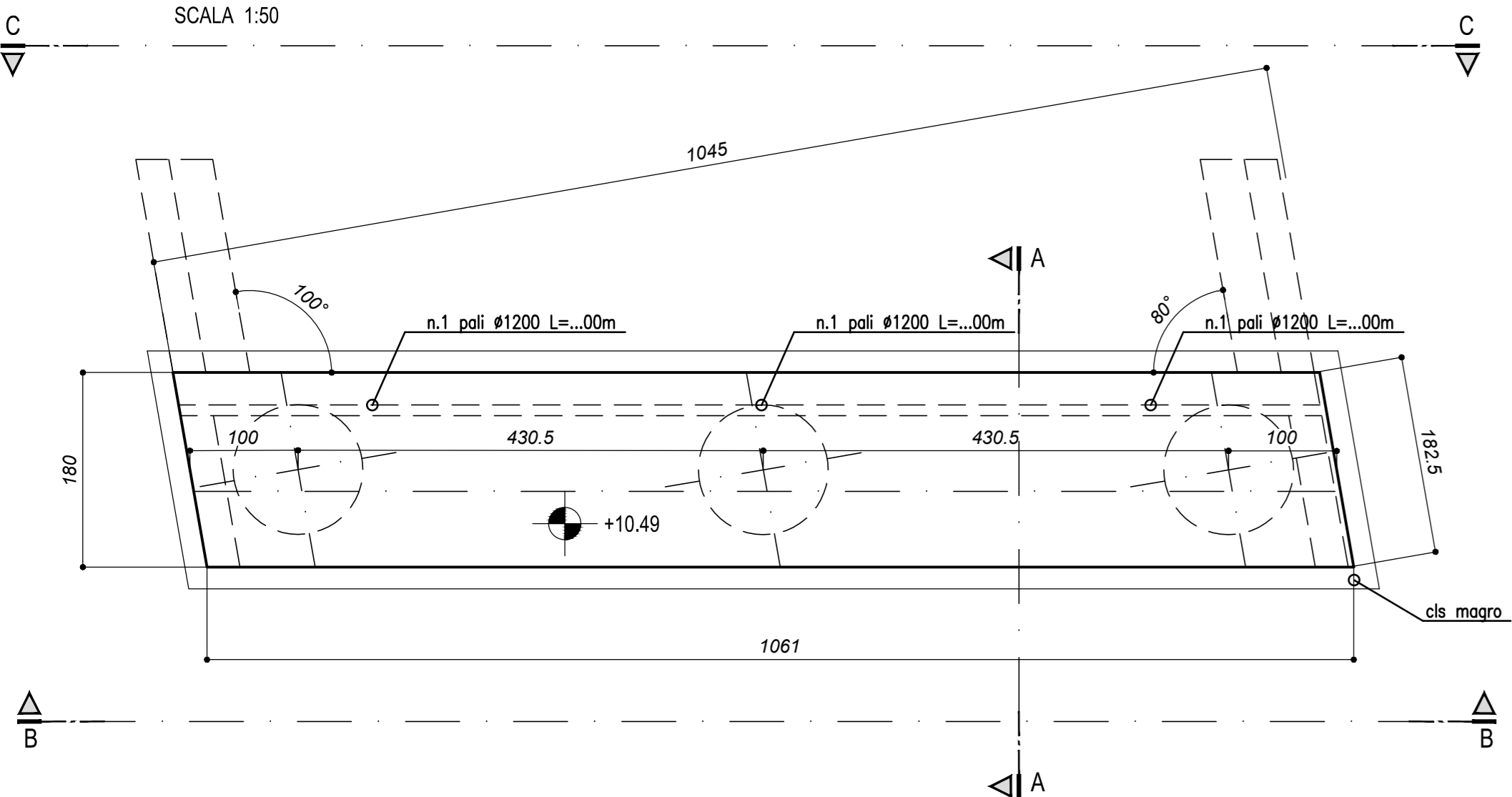
CARPENTERIA SP1
PROSPETTO B
SCALA 1:50



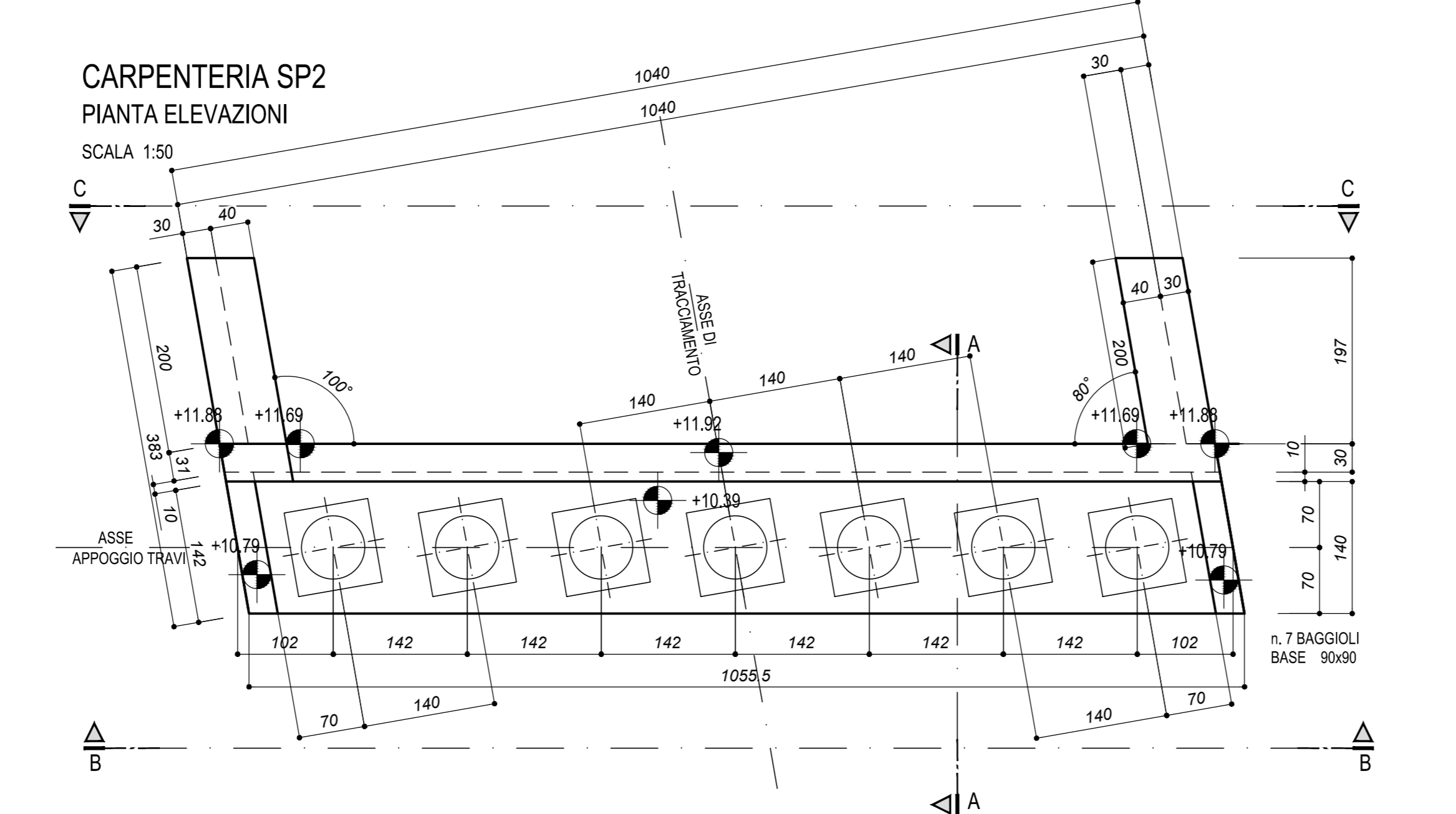
CARPENTERIA SP1
SEZIONE TRASVERSALE A-A
SCALA 1:50



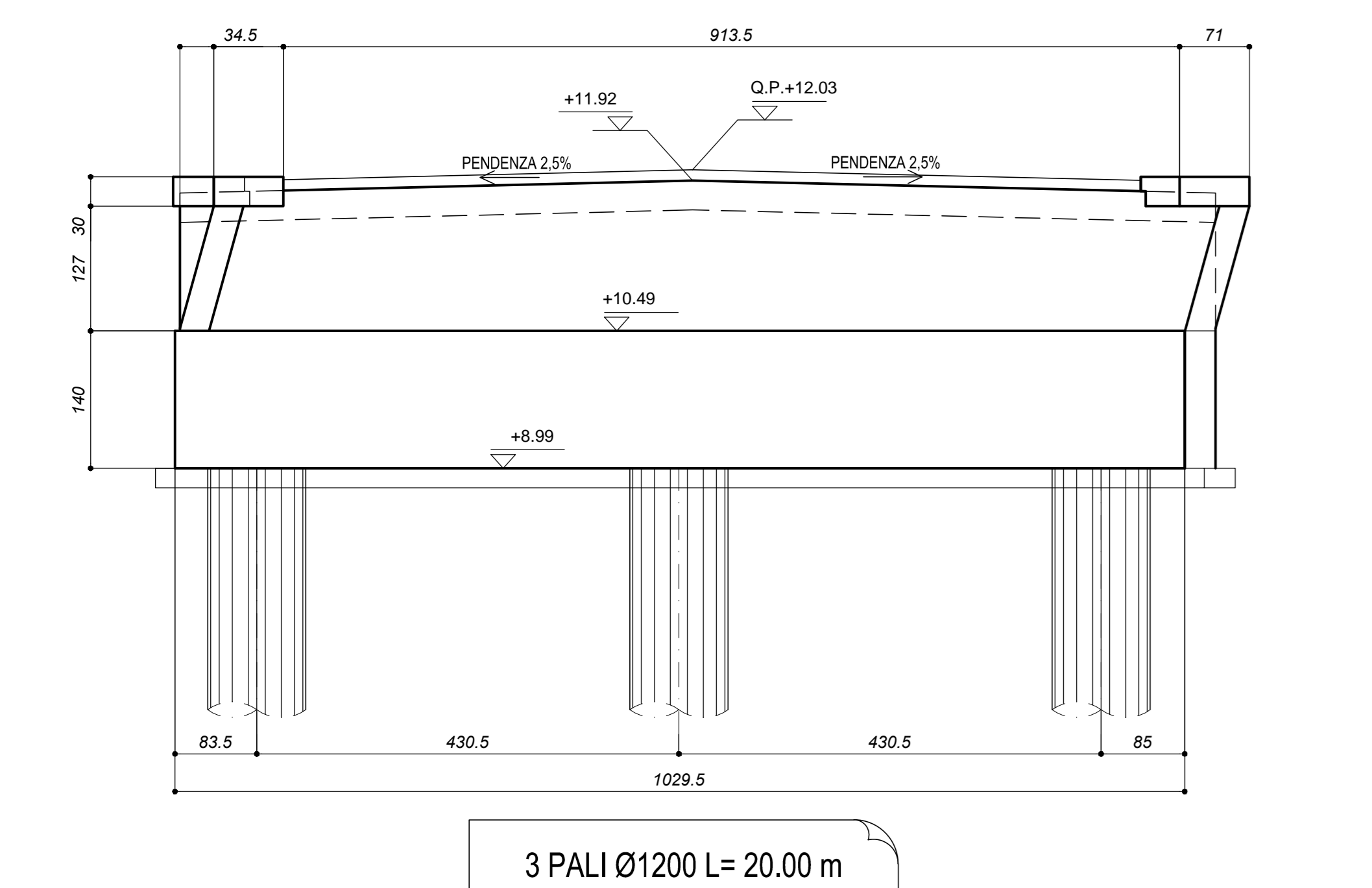
CARPENTERIA SP2
PIANTA FONDAZIONI
SCALA 1:50



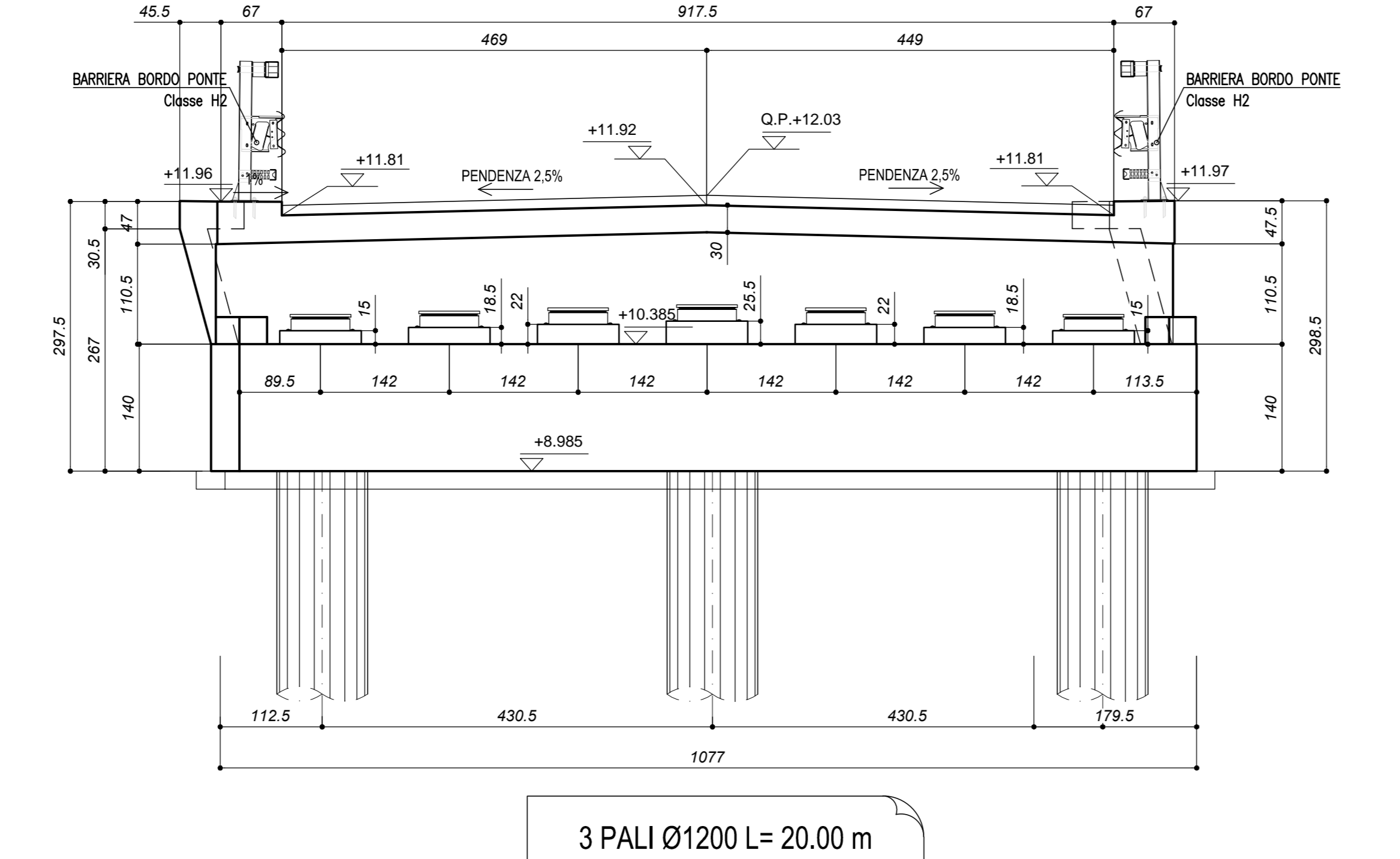
CARPENTERIA SP2
PIANTA ELEVAZIONI
SCALA 1:50



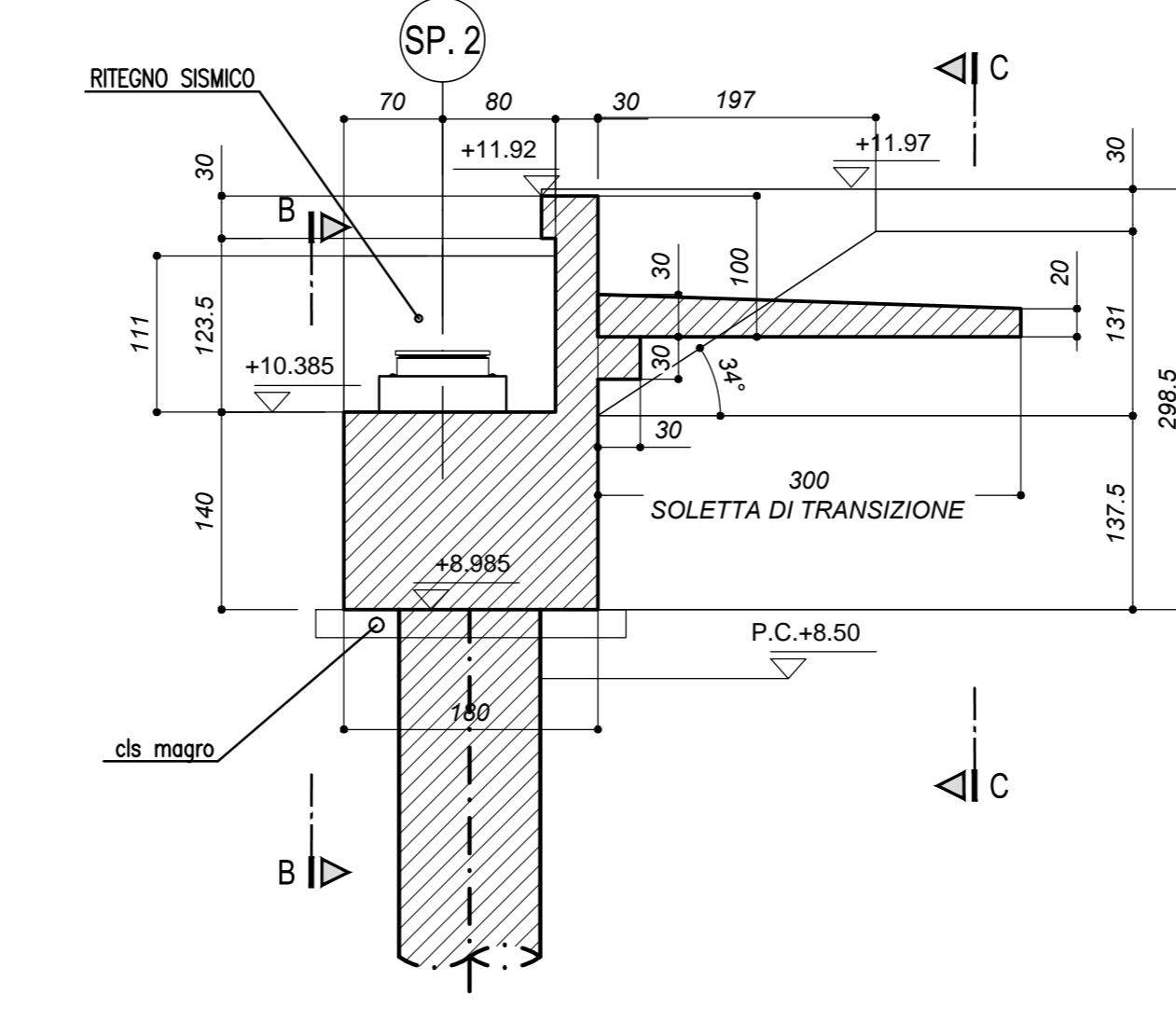
CARPENTERIA SP2
PROSPETTO C
SCALA 1:50



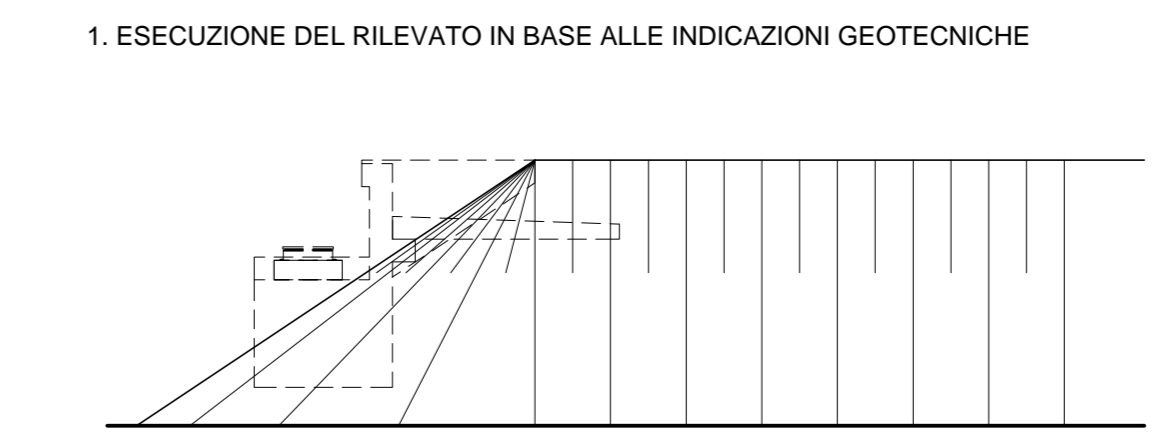
CARPENTERIA SP2
PROSPETTO B
SCALA 1:50



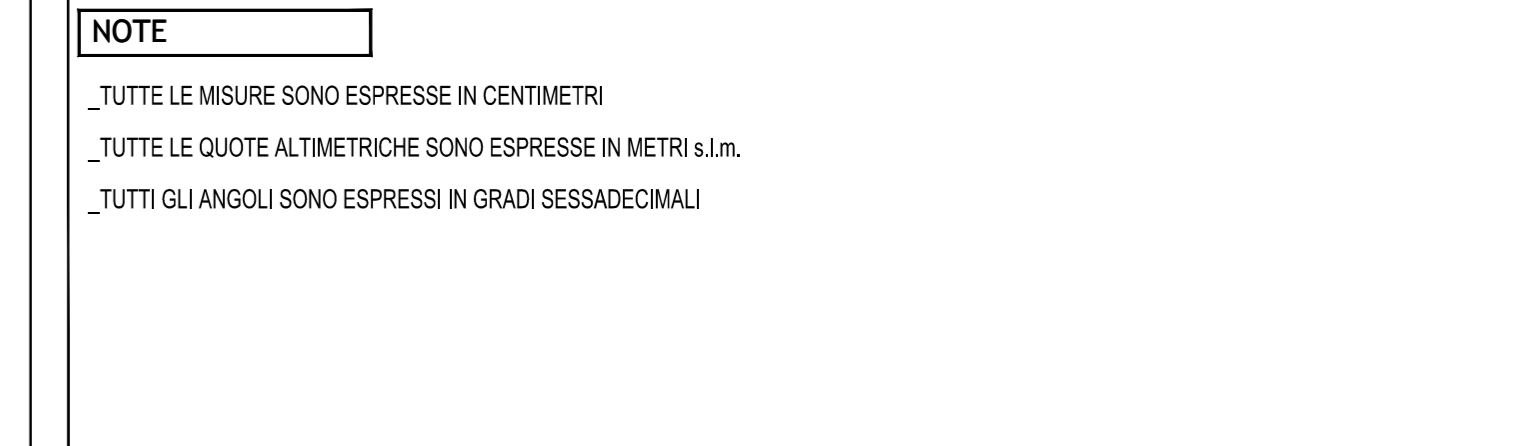
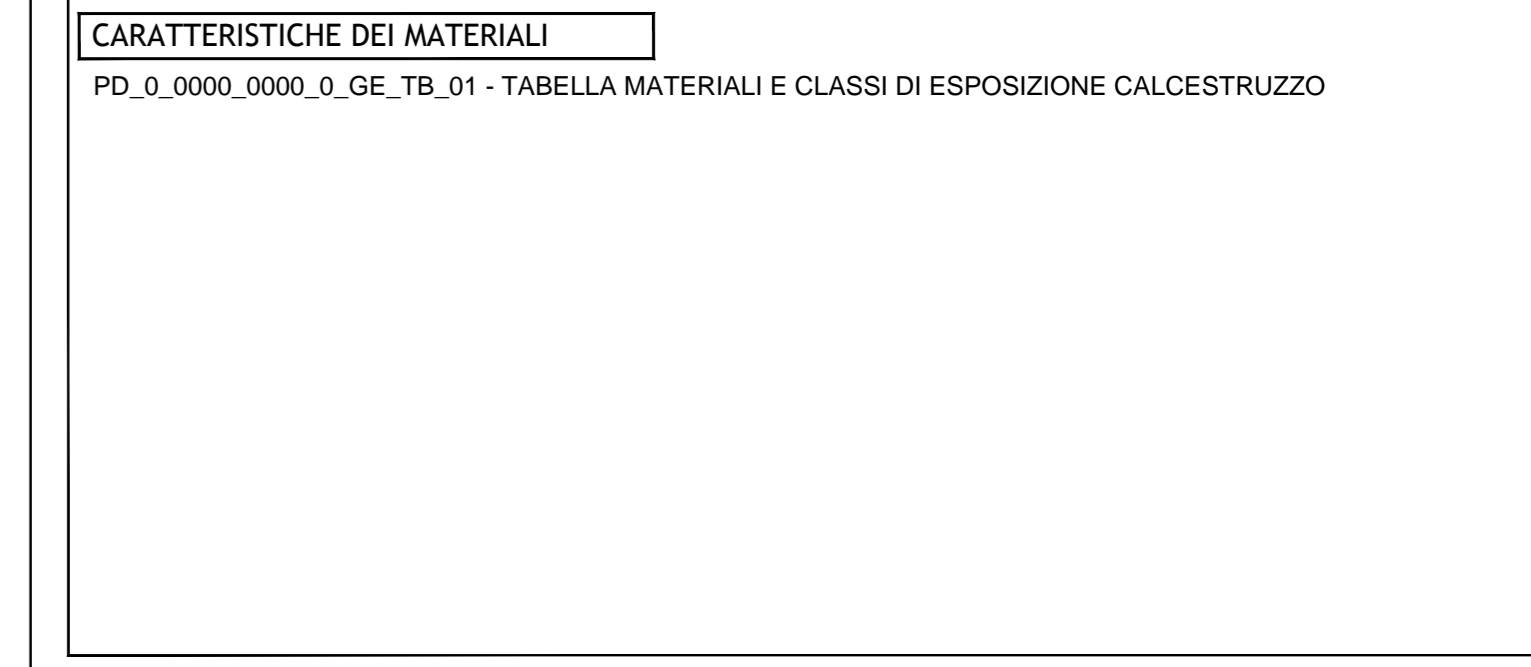
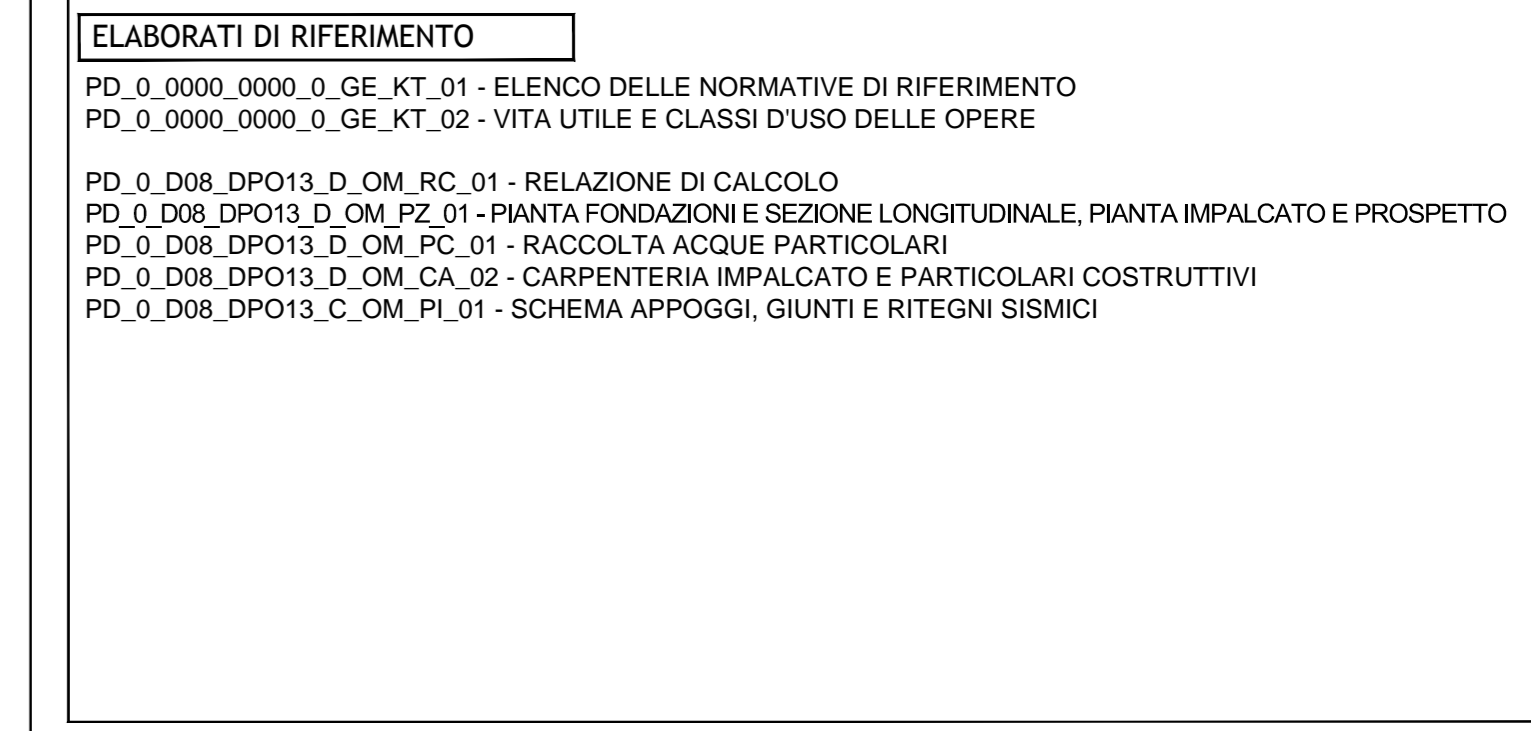
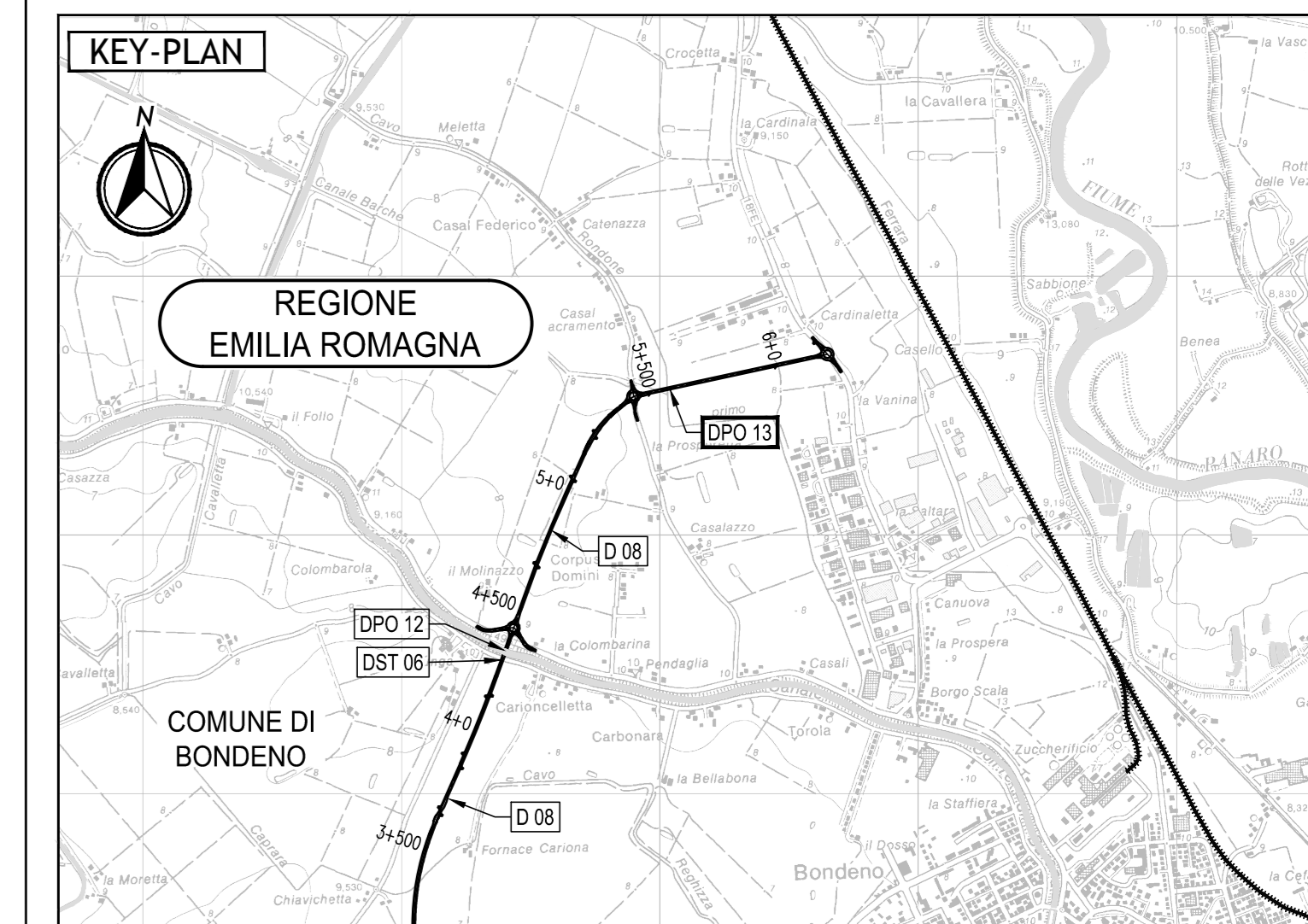
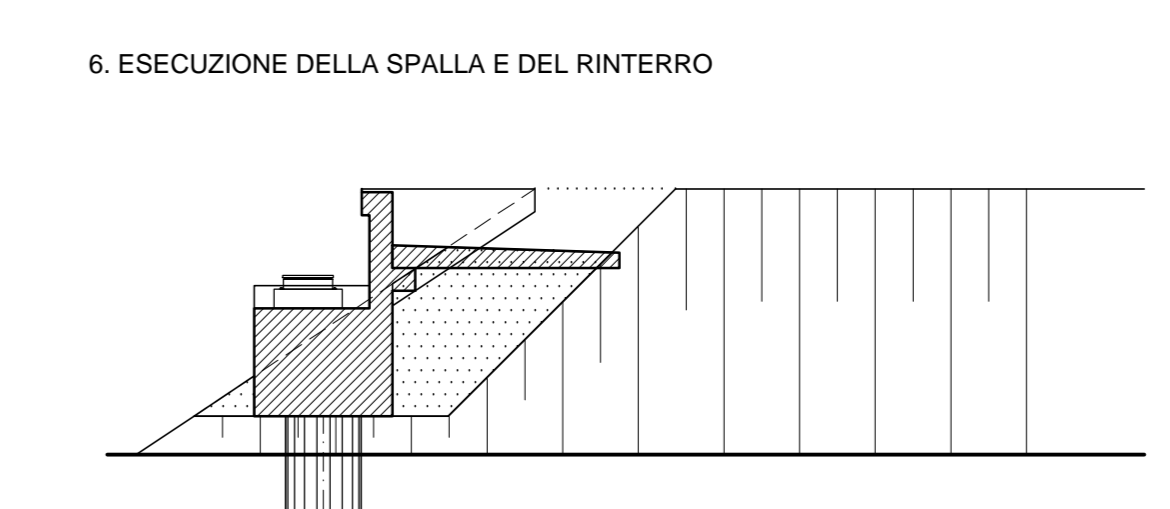
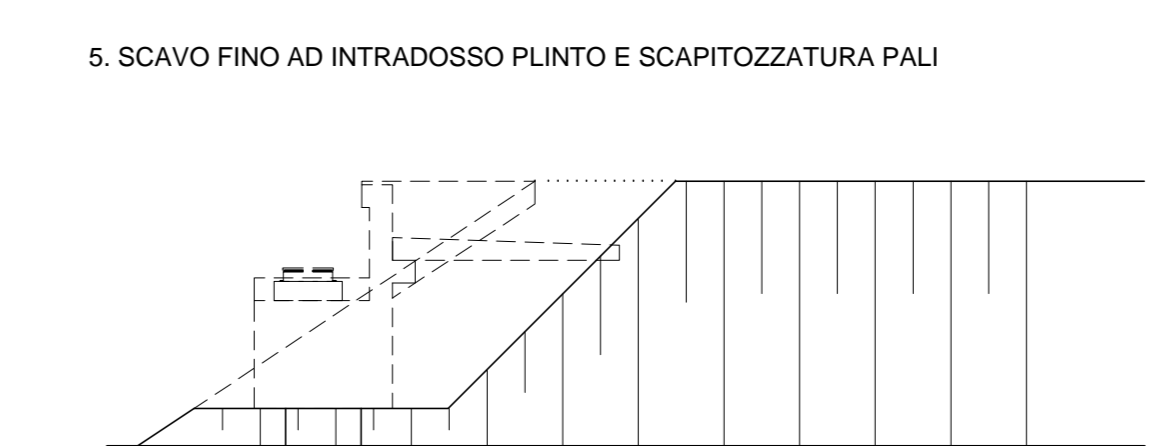
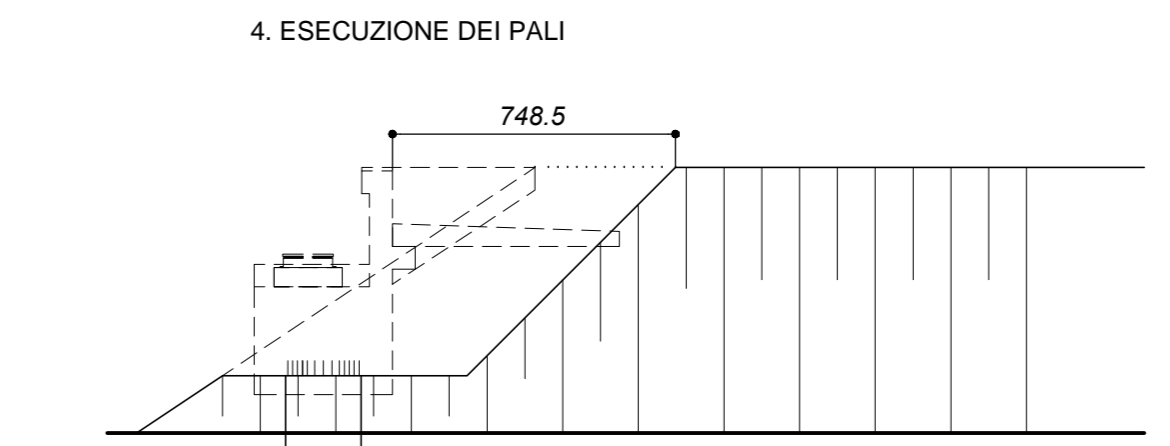
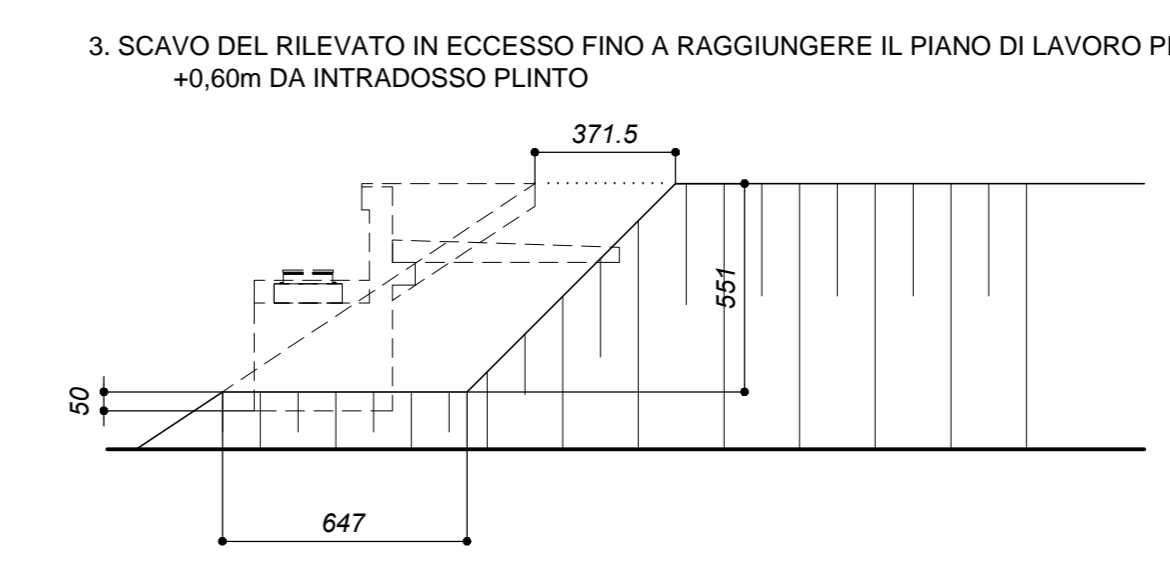
CARPENTERIA SP2
SEZIONE TRASVERSALE A-A
SCALA 1:50



FASI ESECUTIVE SPALLA SP.2
SCALA 1:100



2. ATTESA DEI TEMPI PER L'ESAURIMENTO DEI CEDIMENTI DI CONSOLIDAZIONE



IL CONCESSIONARIO: Regione Emilia-Romagna, ARCA AUTOSTRADA REGIONALE CISPADANA

IL CONCESSIONARIO: ARCA AUTOSTRADA REGIONALE CISPADANA

AUTOSTRADA REGIONALE CISPADANA DAL CASELLO DI REGGIOLO-ROLO SULLA A22 AL CASELLO DI FERRARA SUD SULLA A13

CODICE C.U.P. E8180800060009

PROGETTO DEFINITIVO

VIABILITA' DI ADDUZIONE AL SISTEMA AUTOSTRADALE D04-08 (ex 1FE)
Raccordo Bondeno-Cento-Autostrada Cispadana
OPERE STRUTTURALI
DPO13 - PONTE SUL CAVO RONDONE PRIMO
CARPENTERIA SPALLE E FASI ESECUTIVE

IL PROGETTISTA: Alpina s.p.a. (Dott. Ing. Marco Bonfanti, Office Ingegneria di Milano)

RESPONSABILE INTEGRAZIONE PRESTAZIONI SPECIALISTICHE: Ing. Emilio Salsi (Albo Ing. Regione Emilia n° 545)

IL CONCESSIONARIO: Autostrada Regionale Cispadana S.p.A. (IL PRESIDENTE: Giovanni Petroni)

REVISIONE: Ing. Iluminati, Ing. Bonfanti, Ing. Salsi

IDENTIFICAZIONE ELABORATO: DATA: 17.04.2012, EMISSIONE: DESCRIZIONE: PIANO DI LAVORO PER I PALI A +0.60m DA INTRADOSSO PLINTO

REDAZIONE: CONTROLLO: APPROVAZIONE: DATA: 17.04.2012, SCALE: VARIE