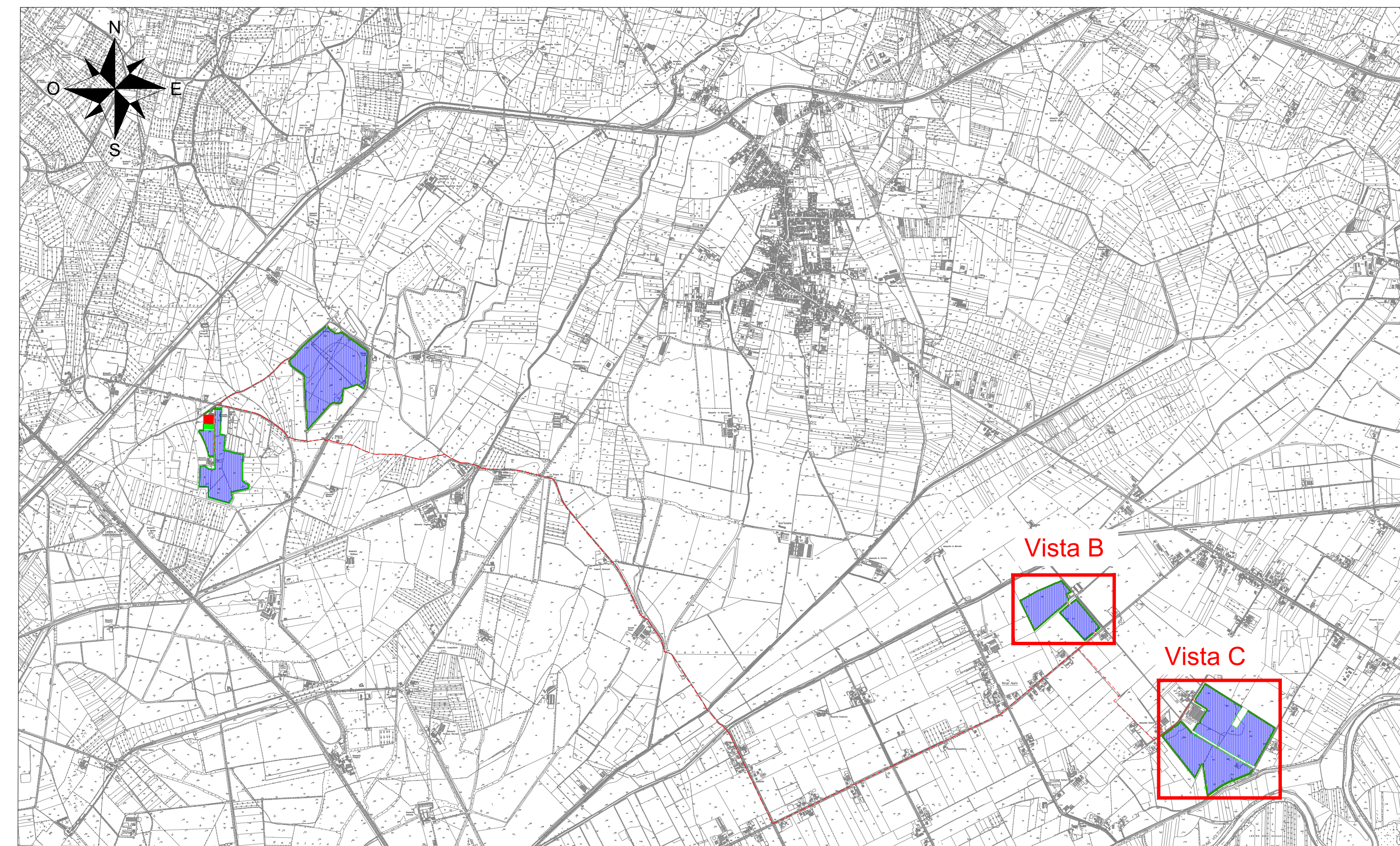
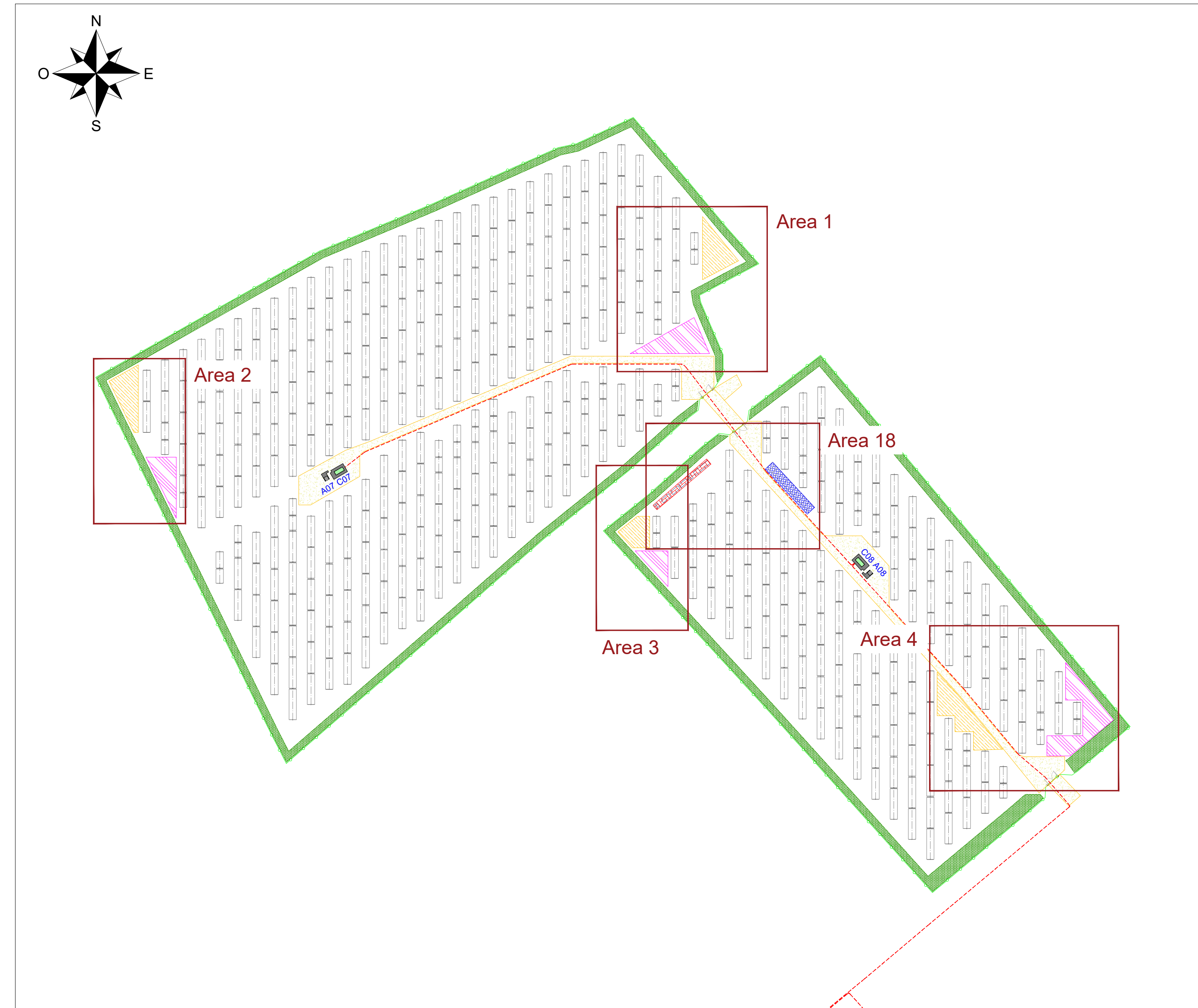


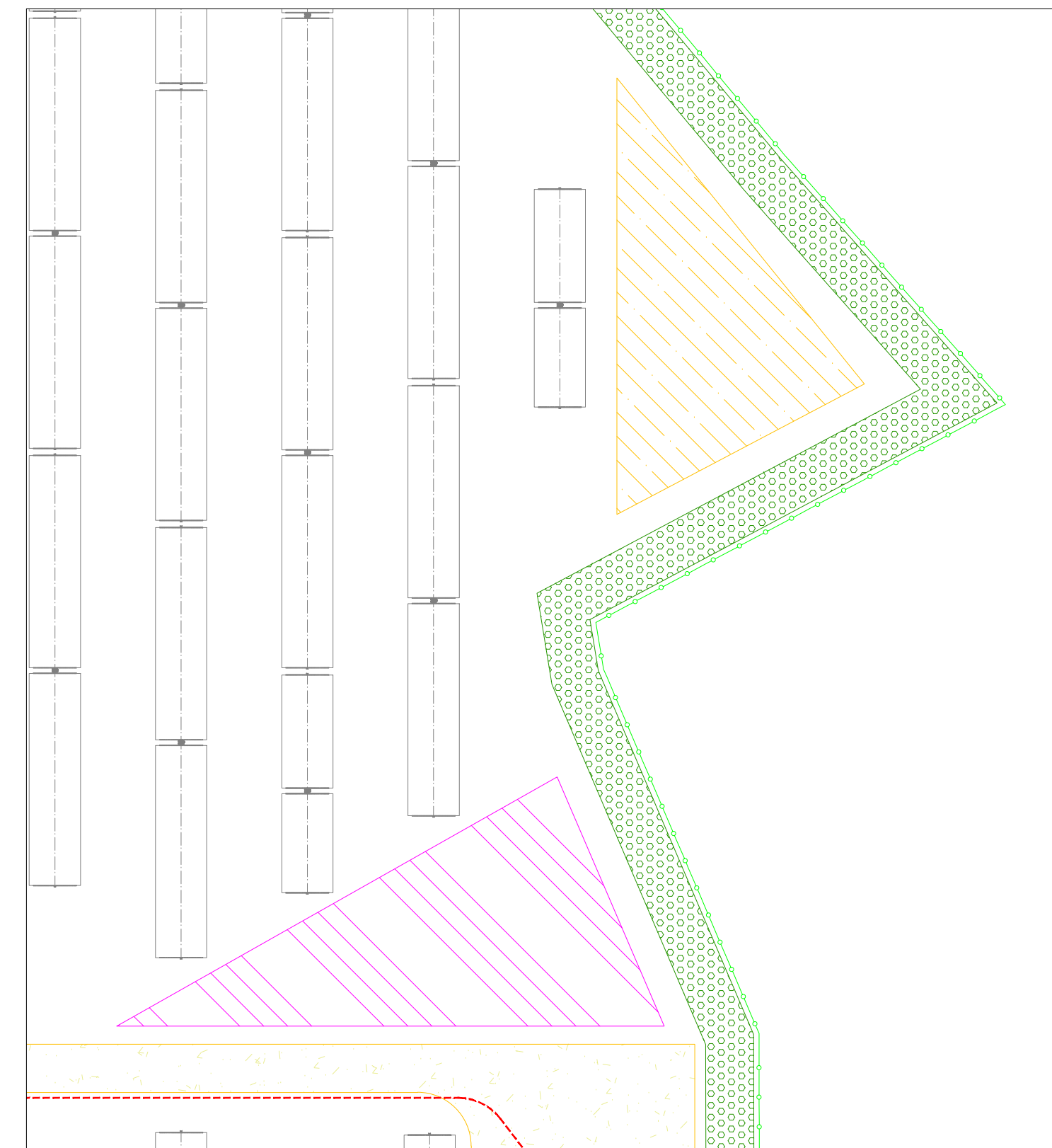
Inquadramento generale impianto agro-fotovoltaico - Scala 1:30000



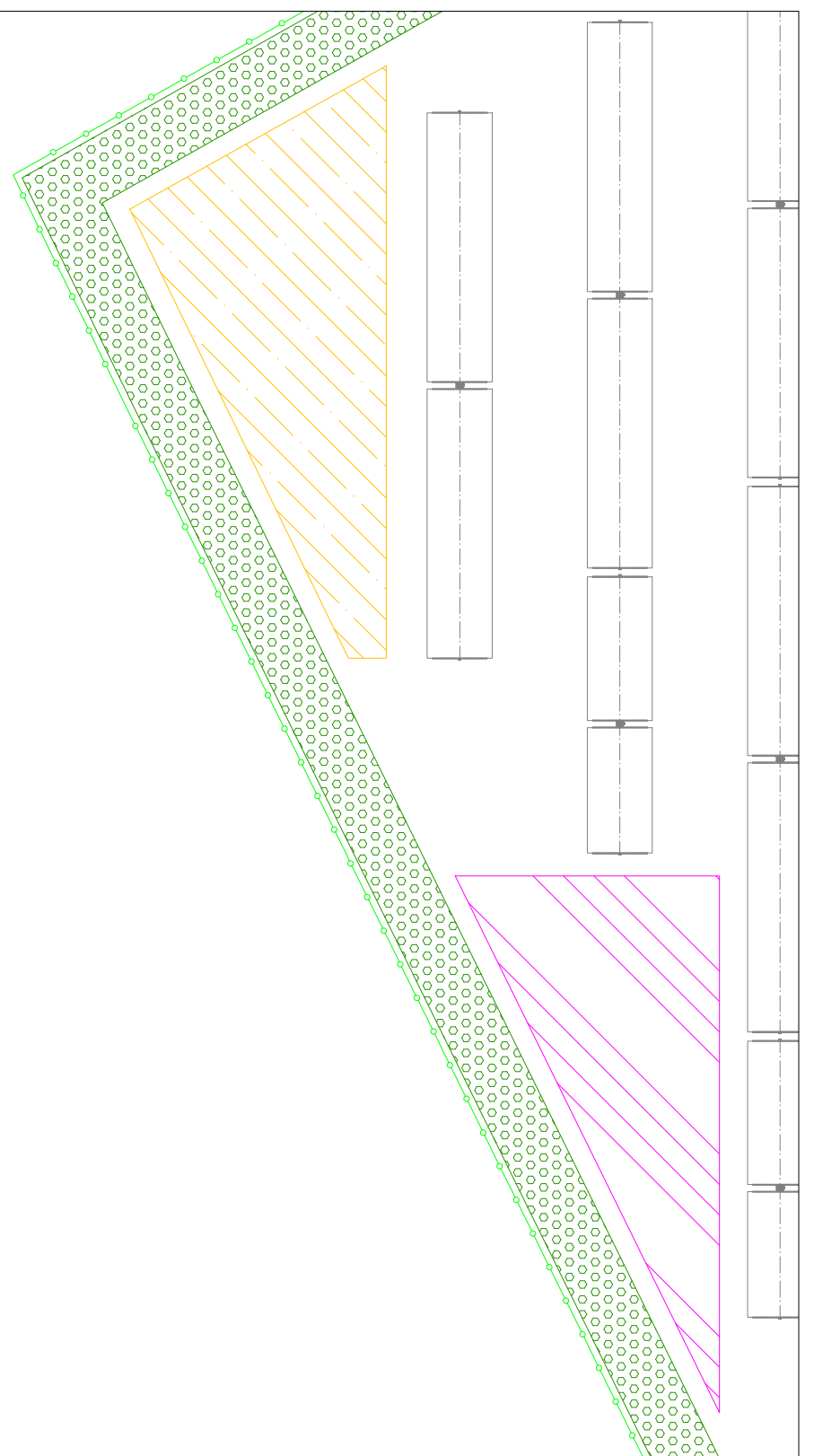
Layout impianto Vista B e identificazione aree stoccaggio/cantiere - Area 3 - Scala 1:2000



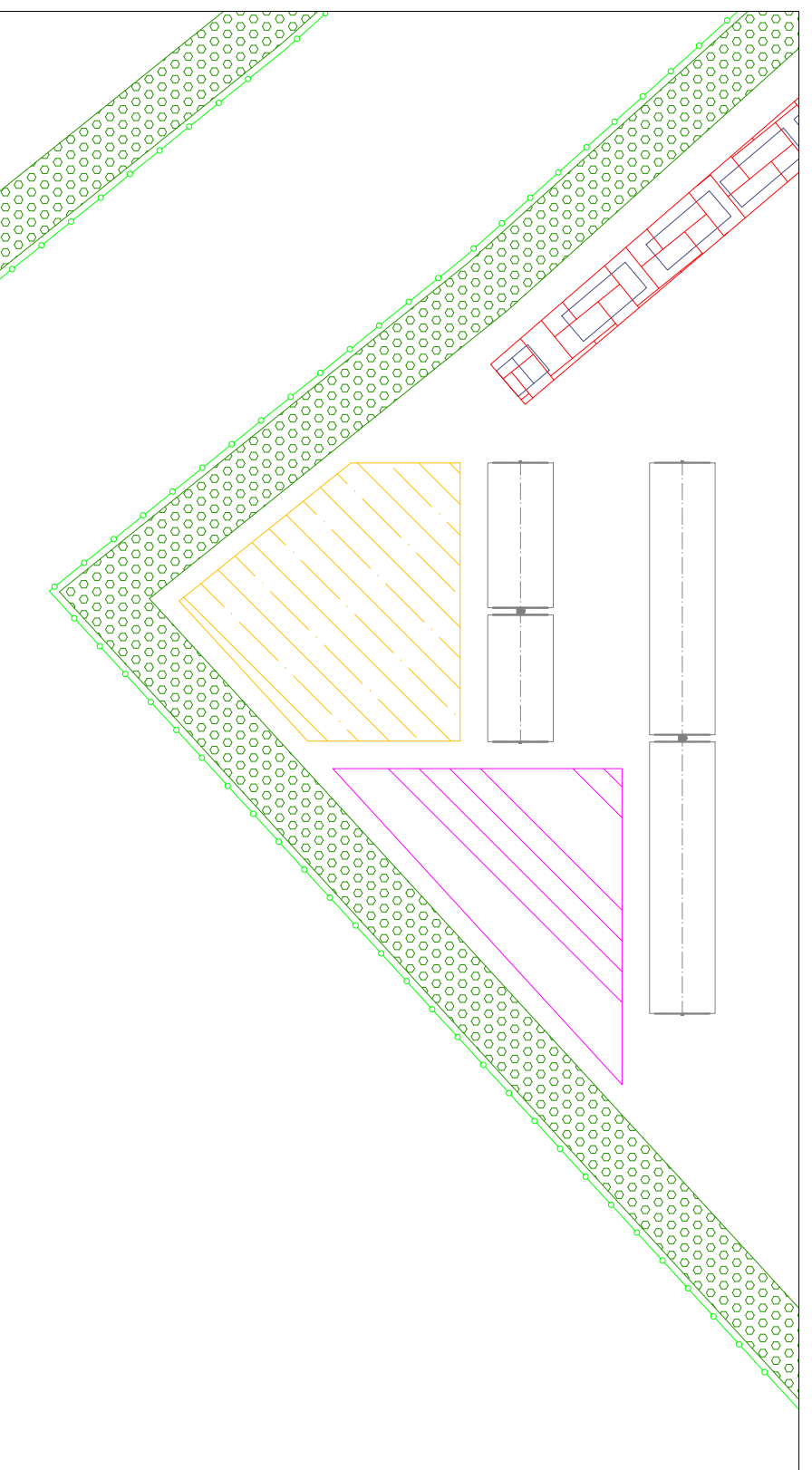
Area 1 - Scala 1:500



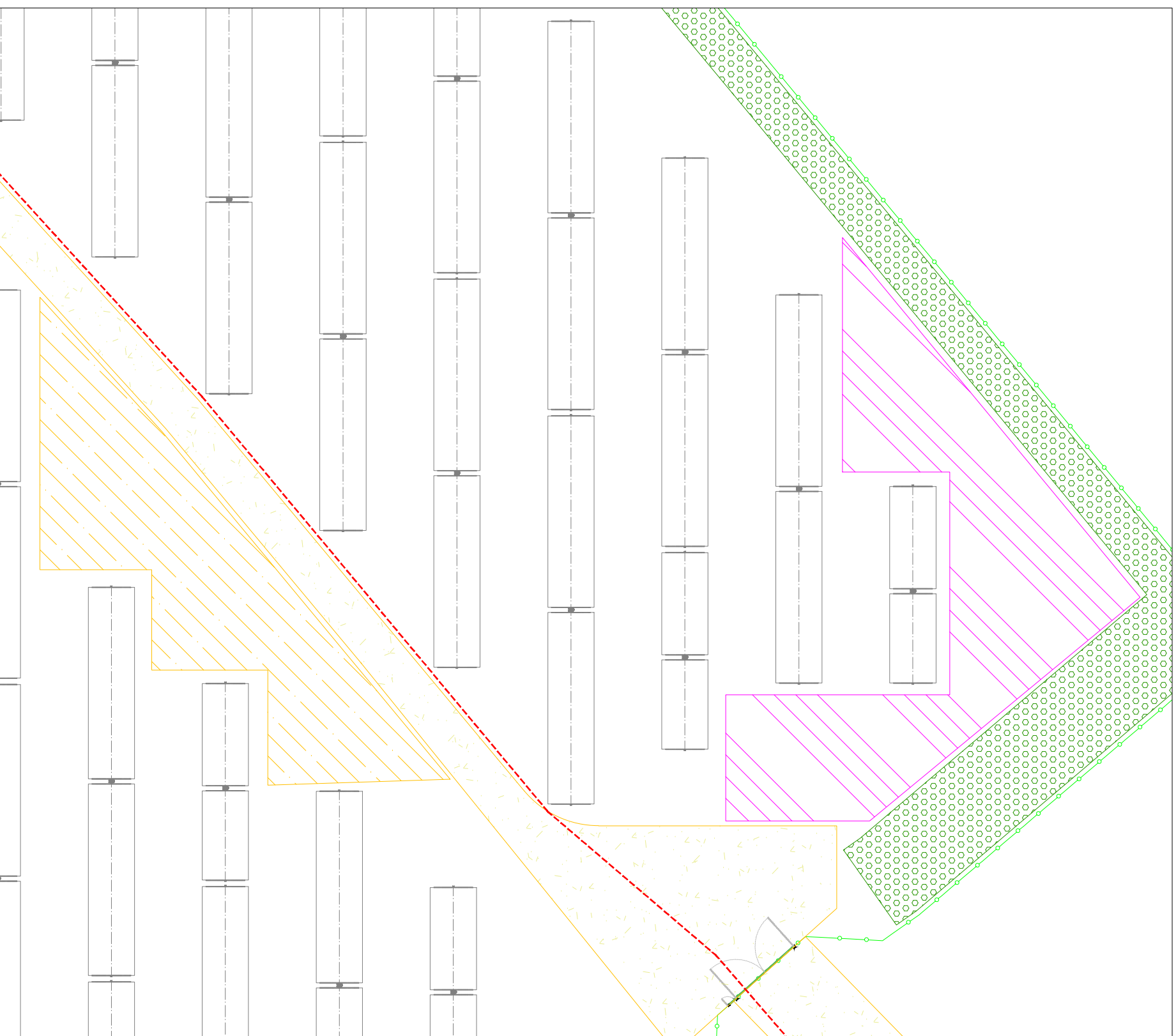
Area 2 - Scala 1:500



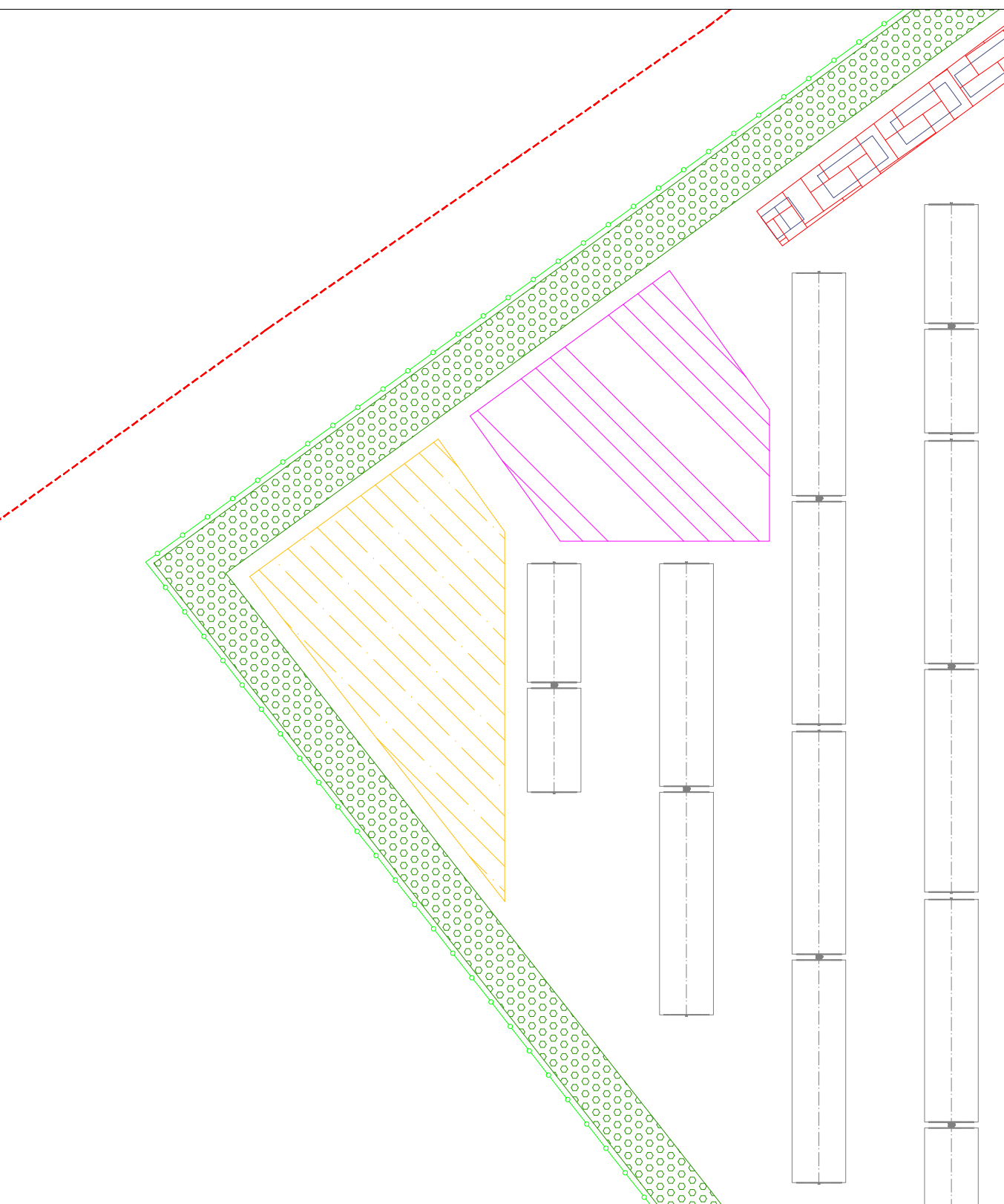
Area 3 - Scala 1:500



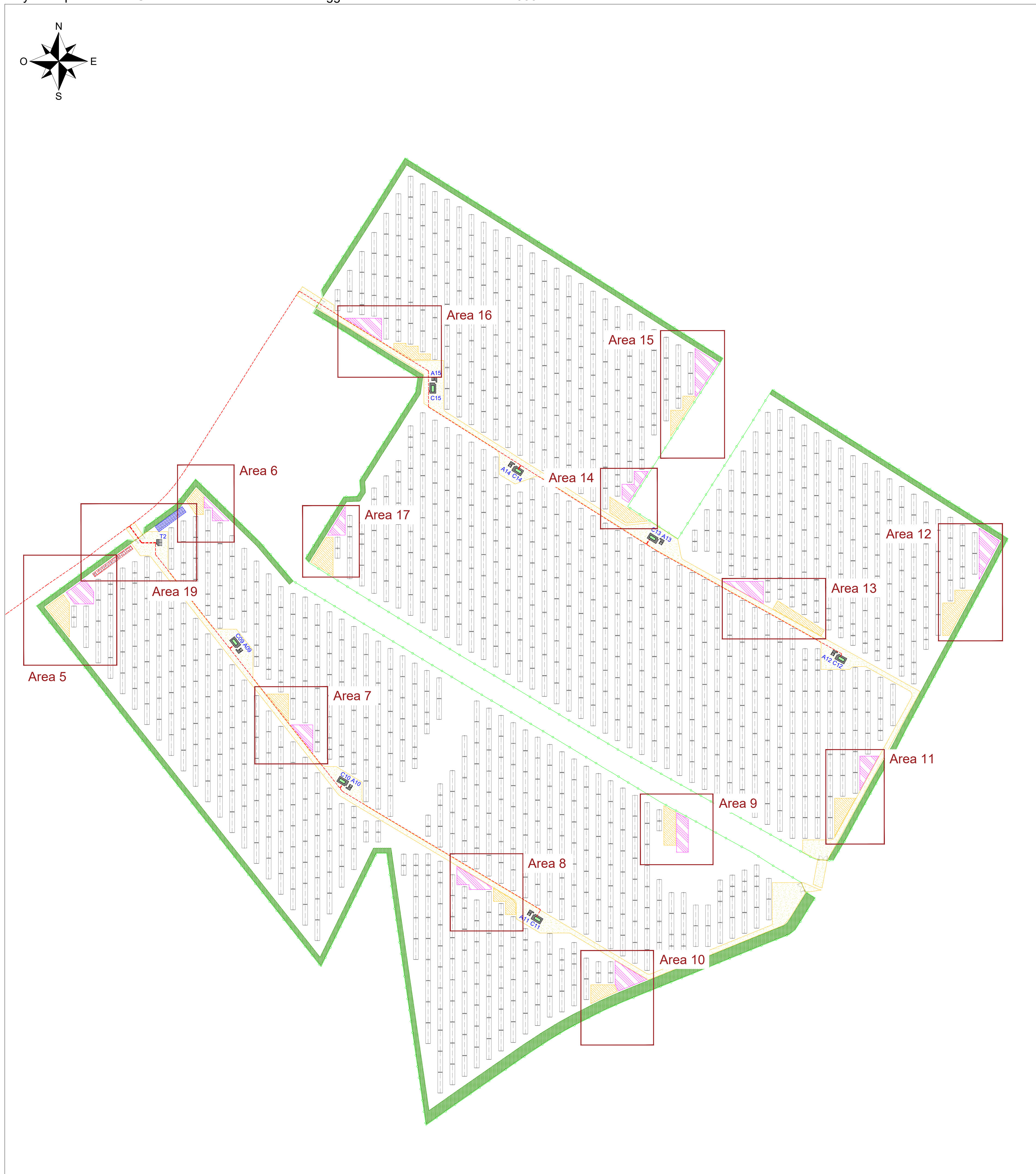
Area 4 - Scala 1:500



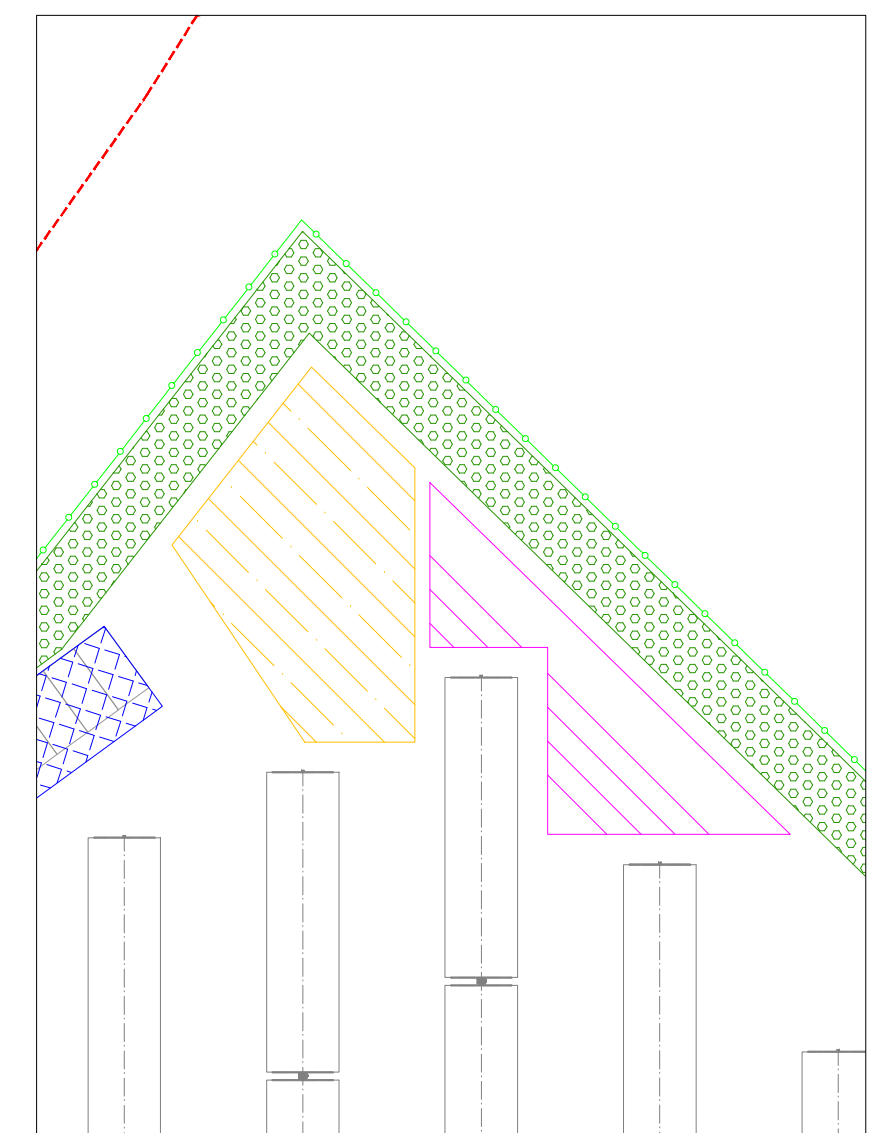
Area 5 - Scala 1:500



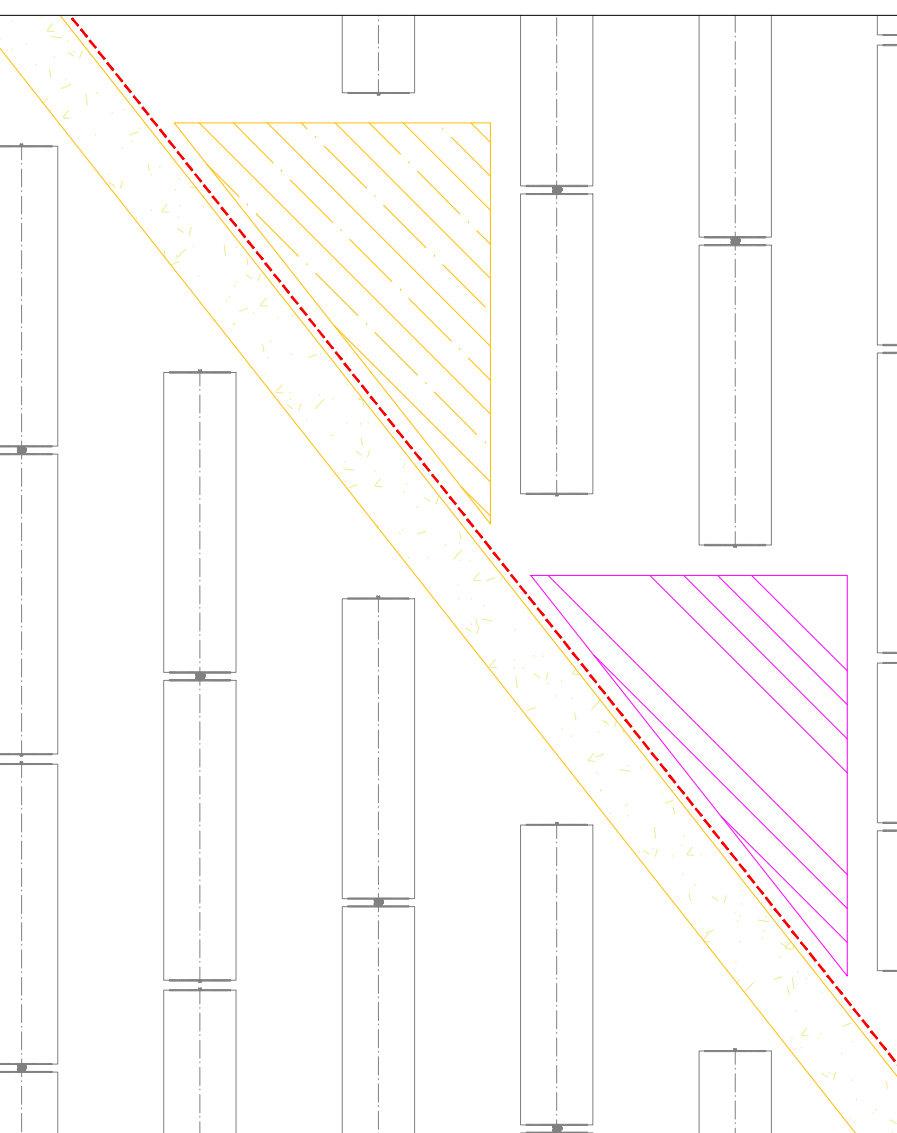
Layout impianto Vista C e identificazione aree di stoccaggio cantiere - Area 4 - Scala 1:2000



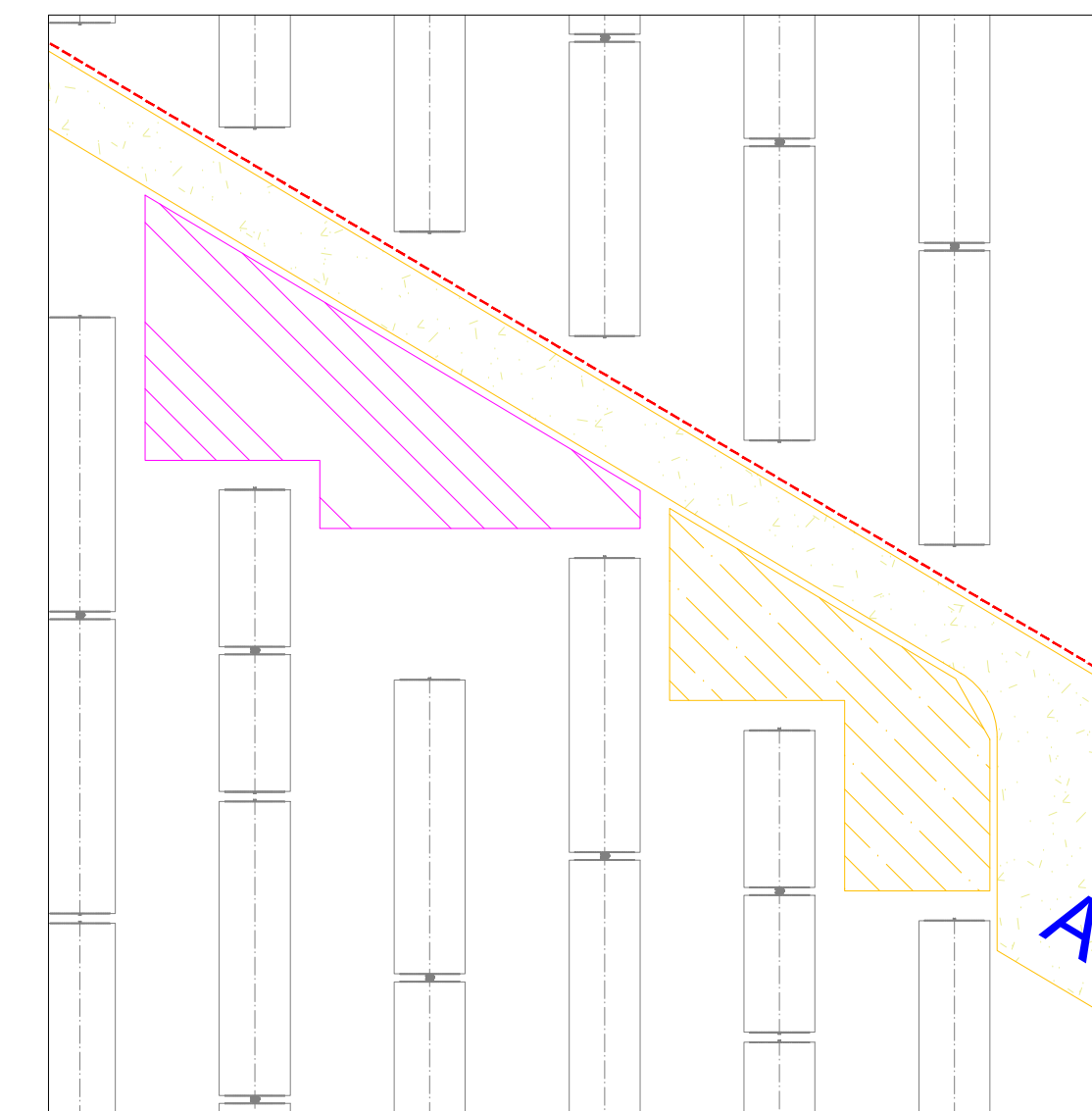
Area 6 - Scala 1:500



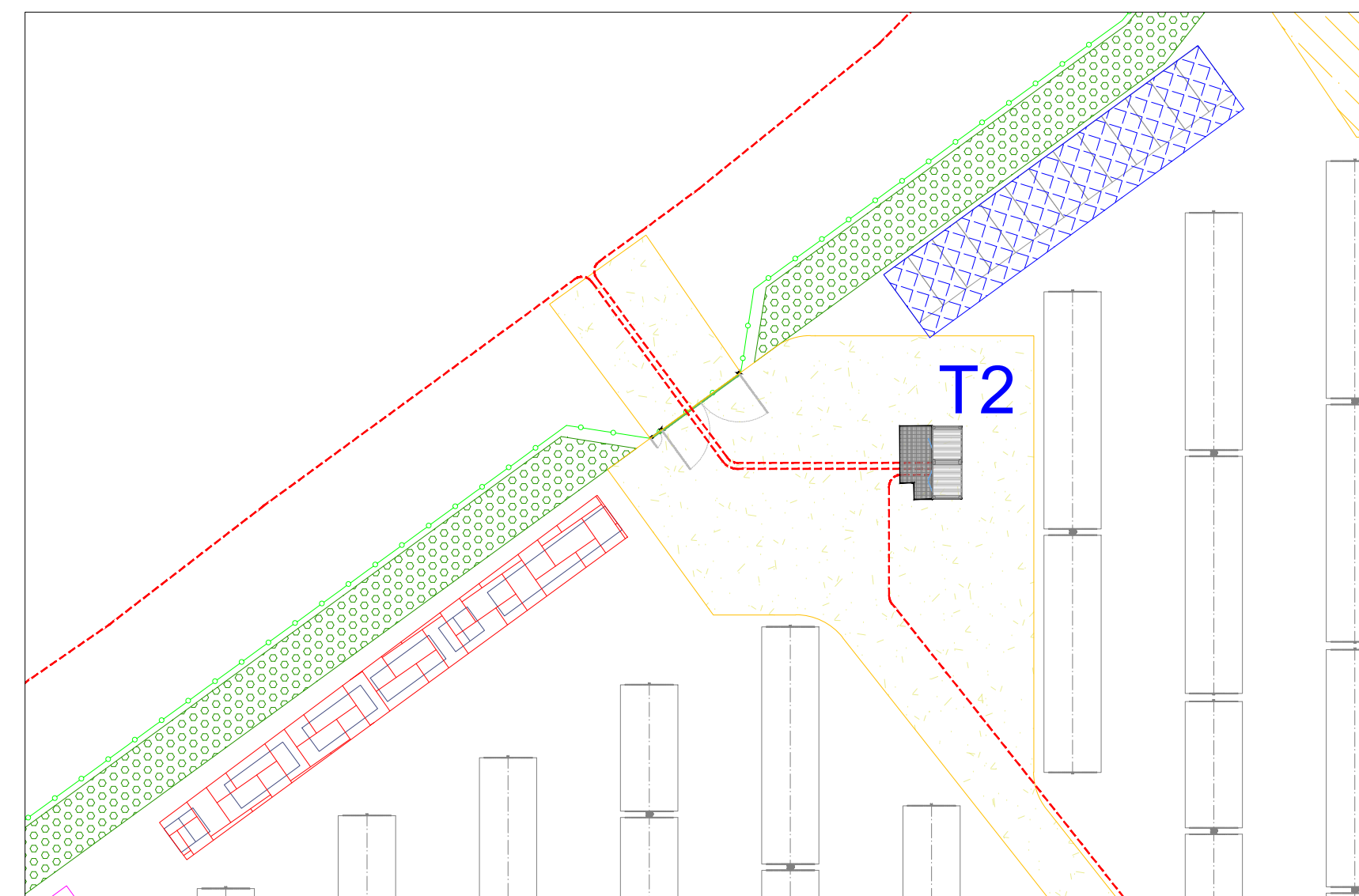
Area 7 - Scala 1:500



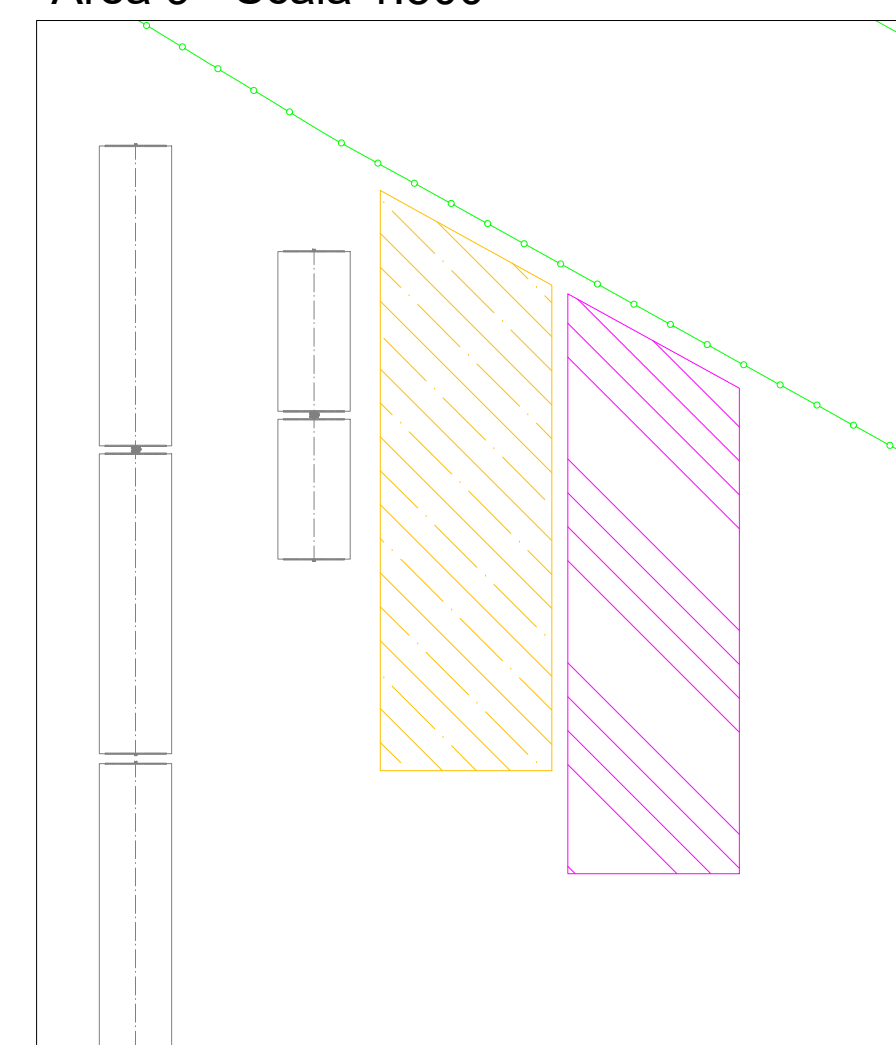
Area 8 - Scala 1:500



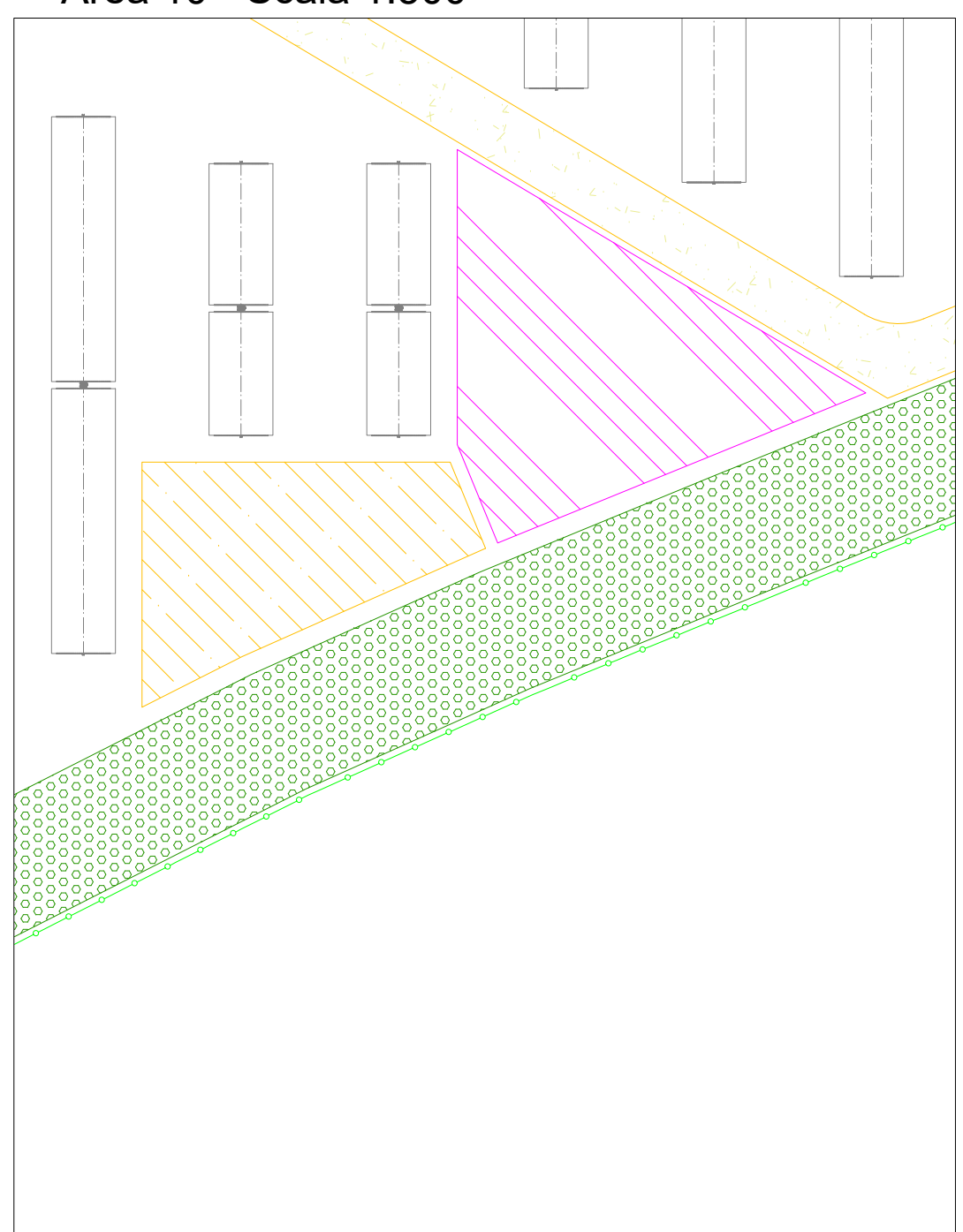
Area 19 - Scala 1:500



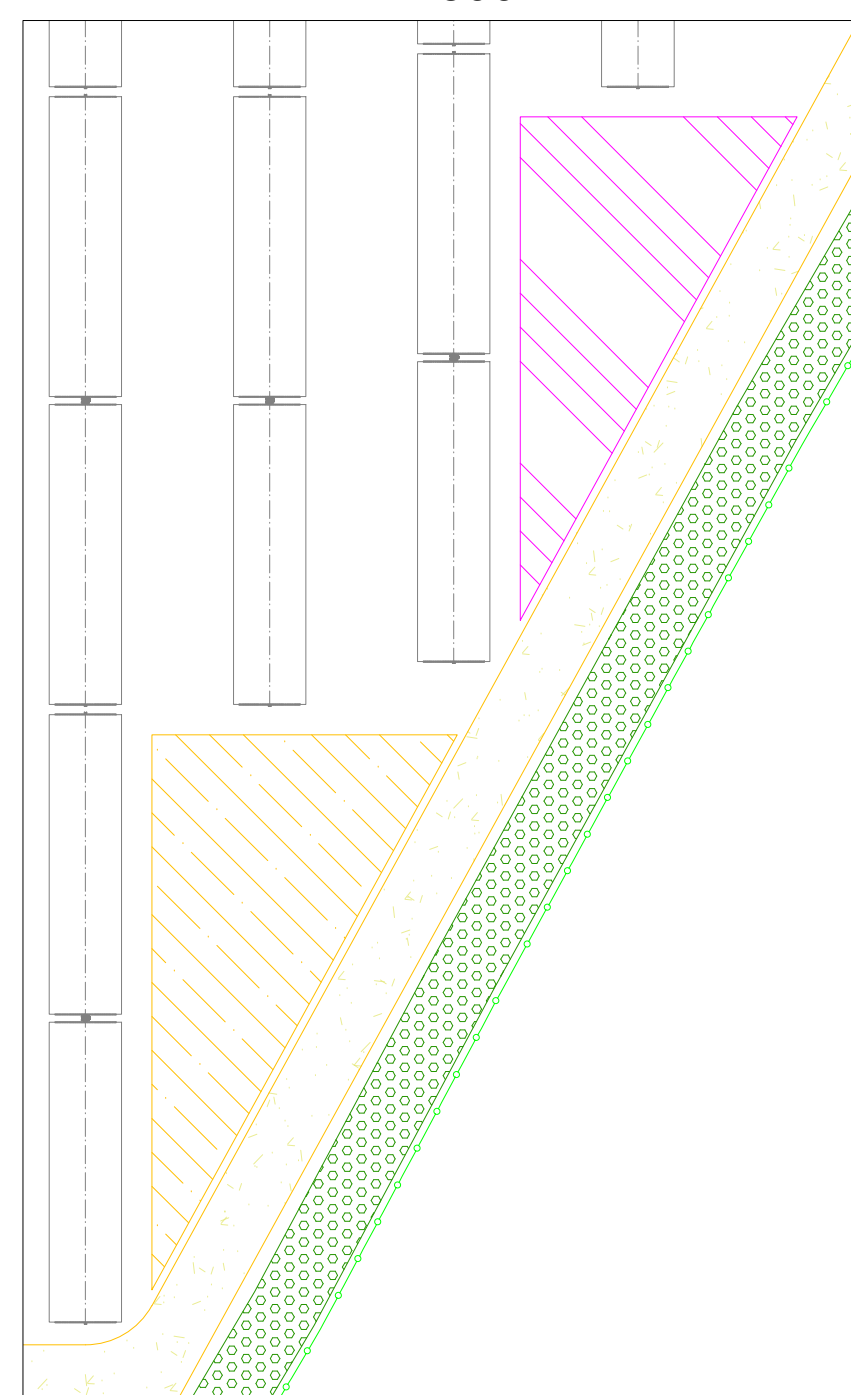
Area 9 - Scala 1:500



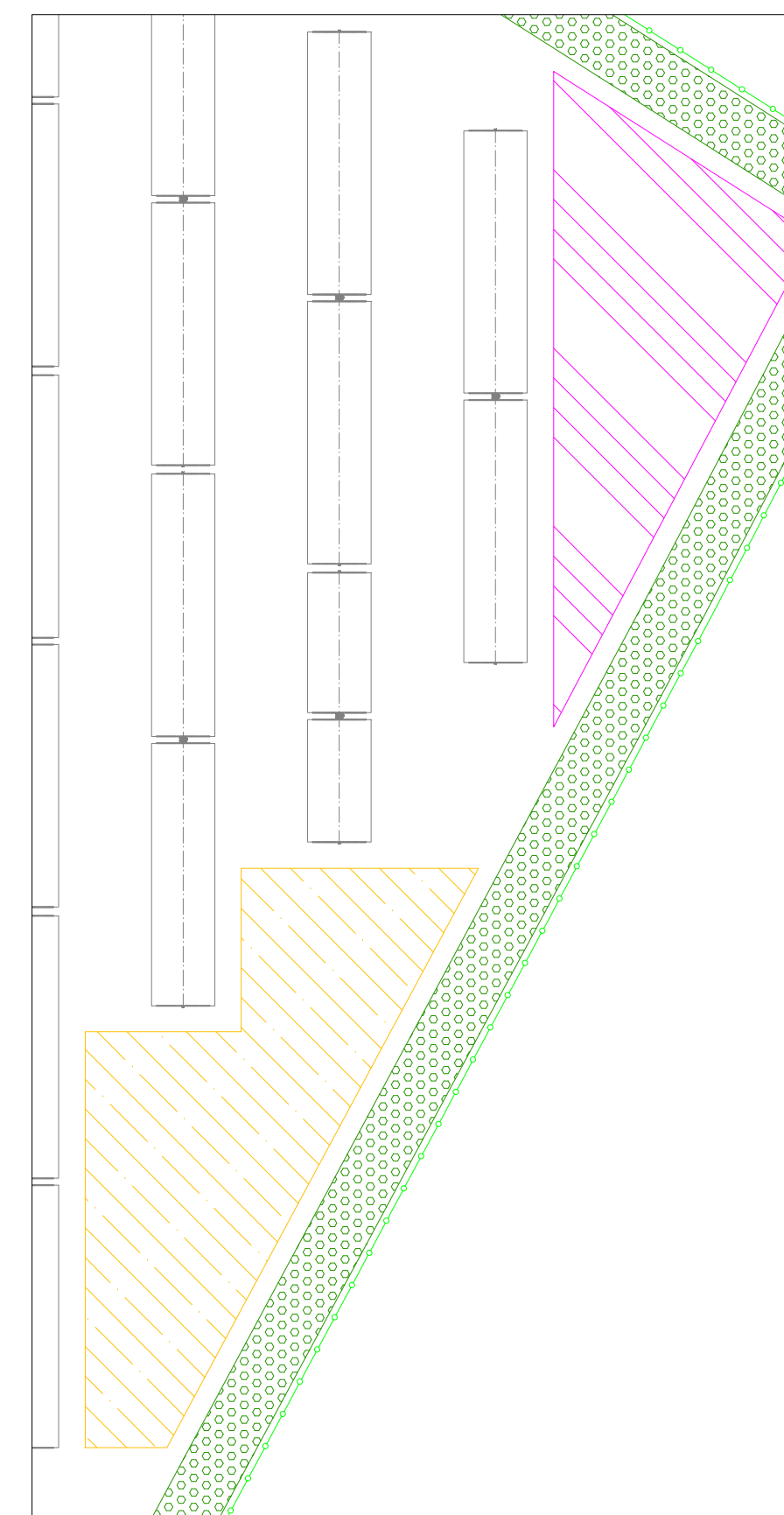
Area 10 - Scala 1:500



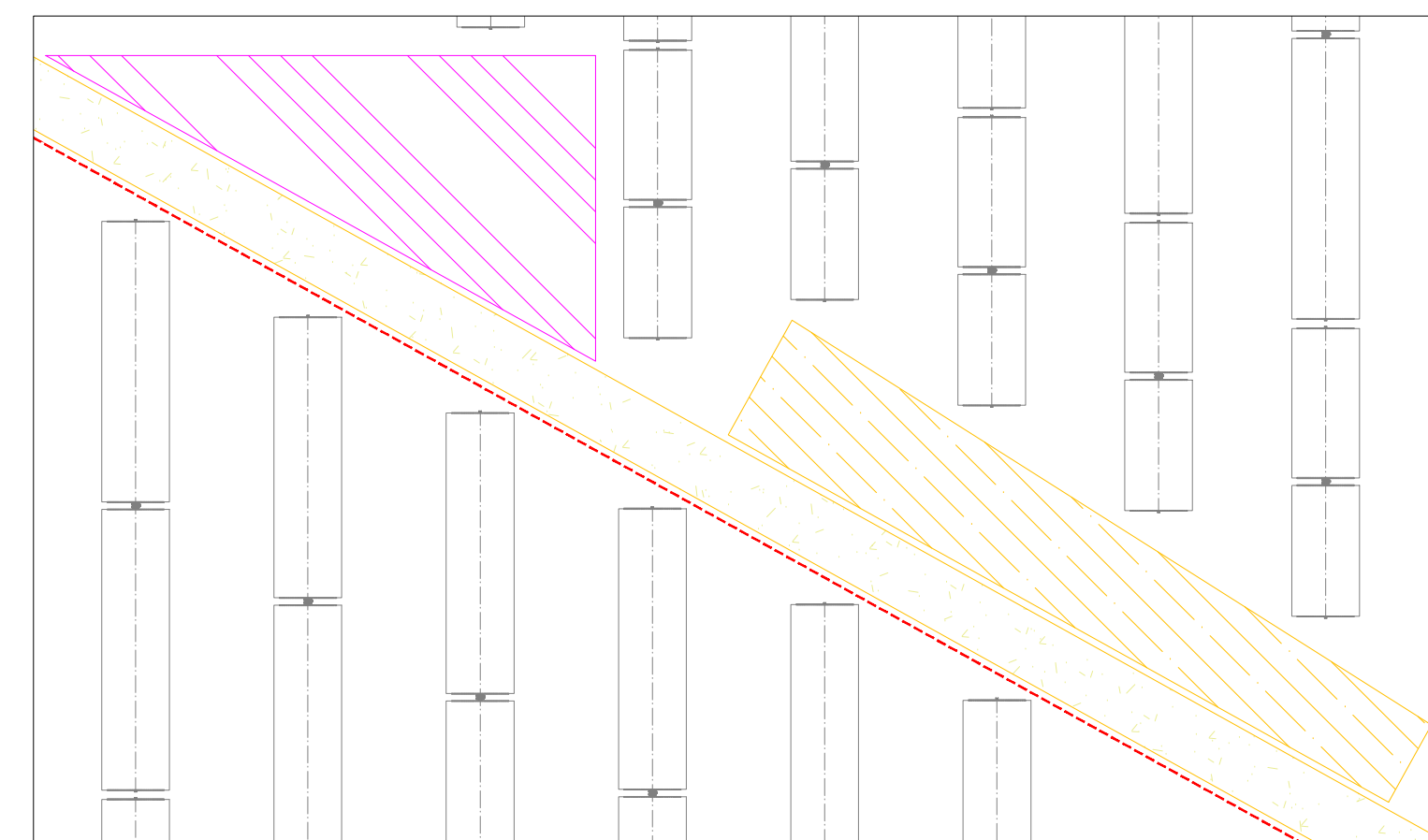
Area 11 - Scala 1:500



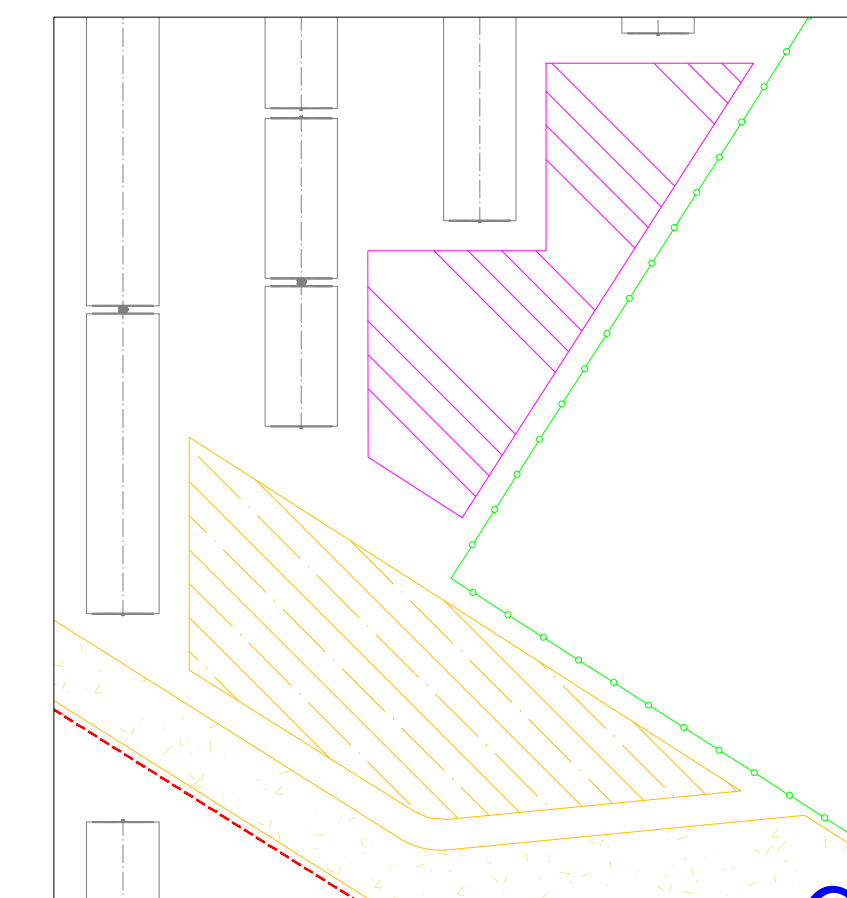
Area 12 - Scala 1:500



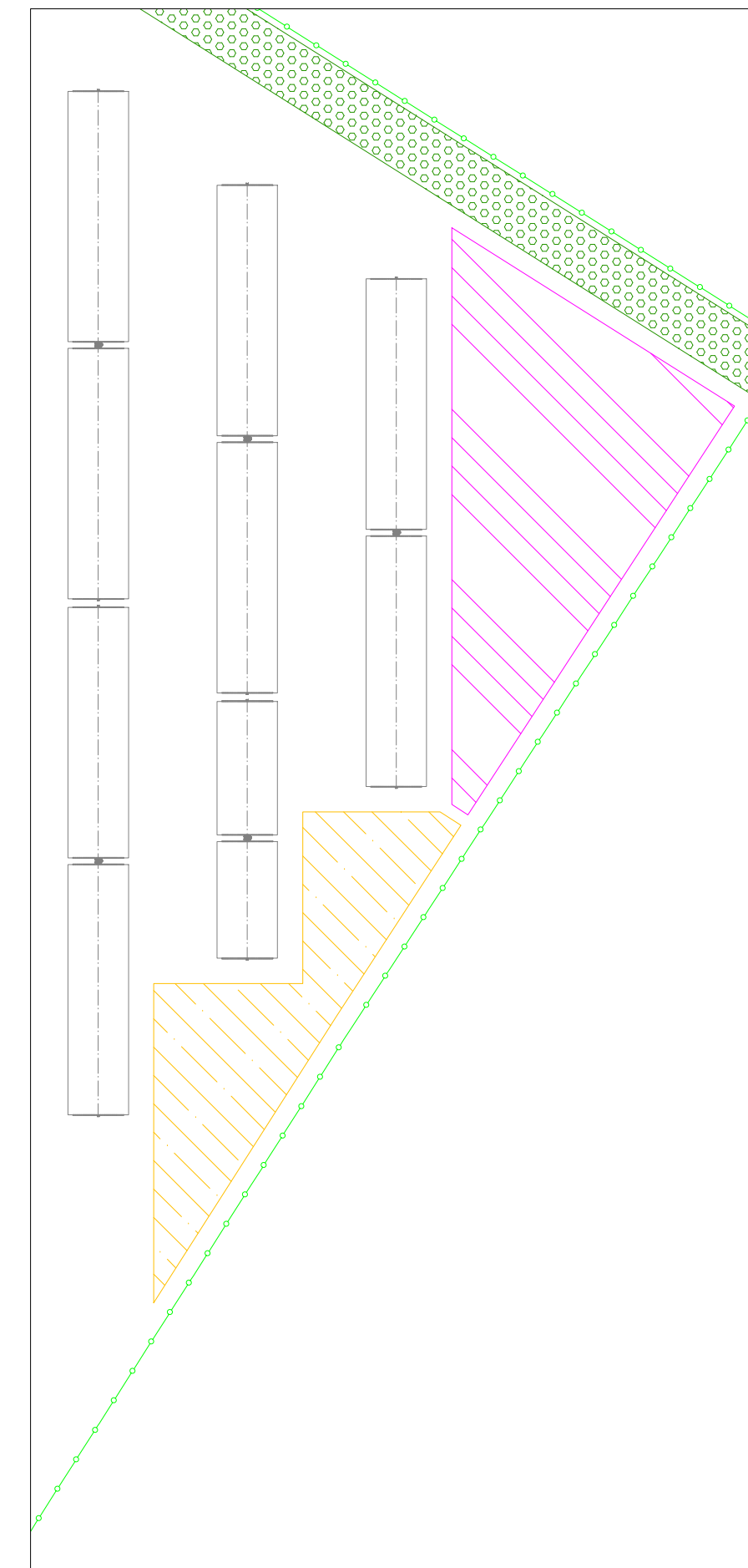
Area 13 - Scala 1:500



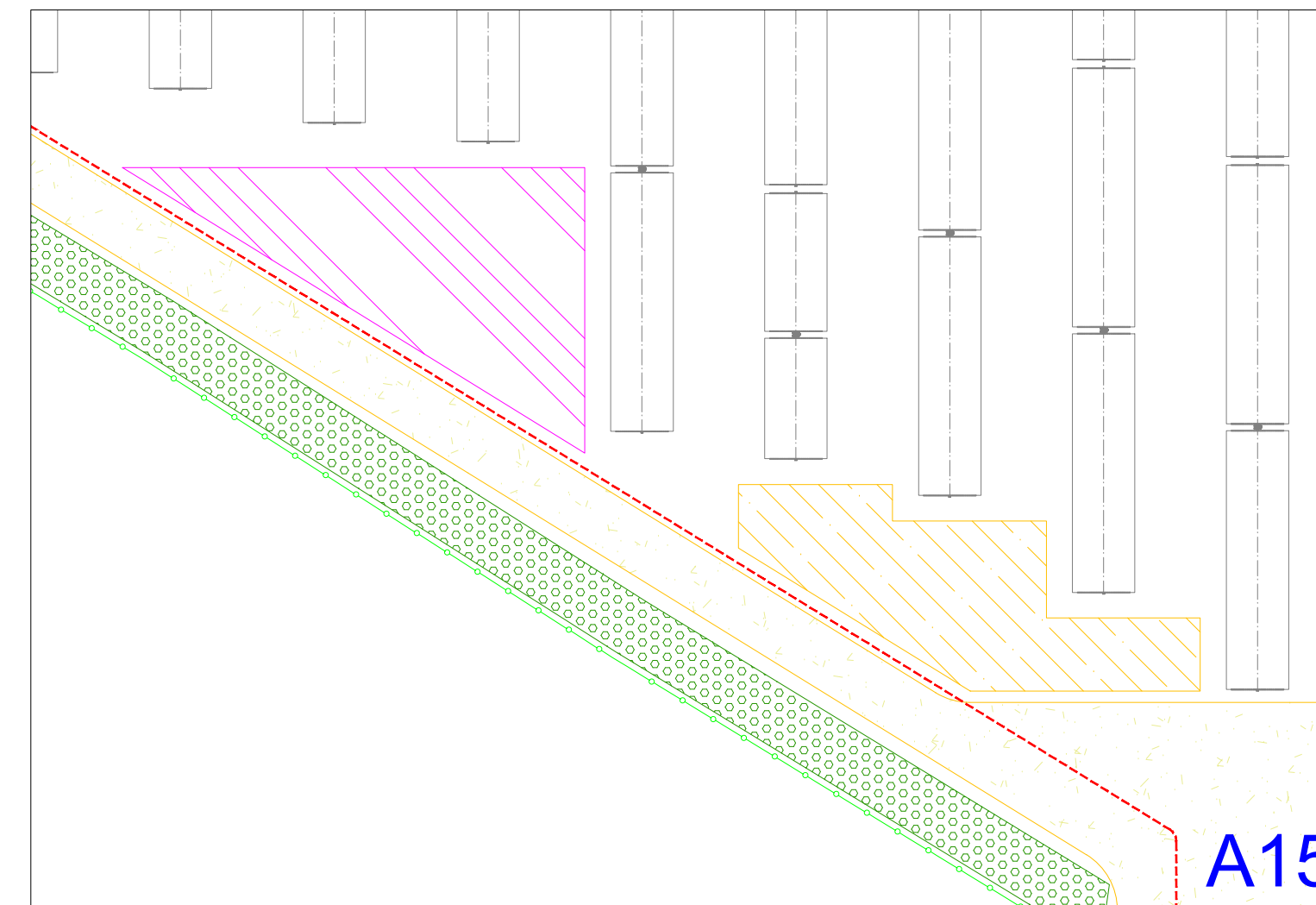
Area 14 - Scala 1:500



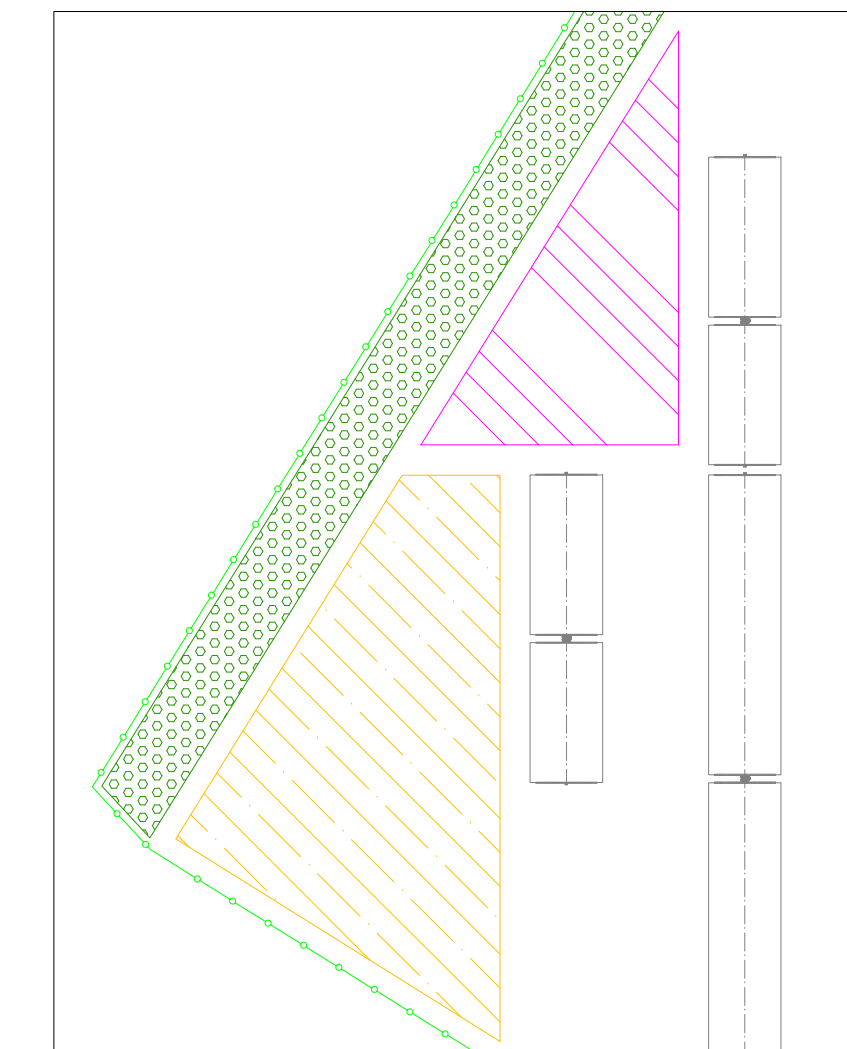
Area 15 - Scala 1:500



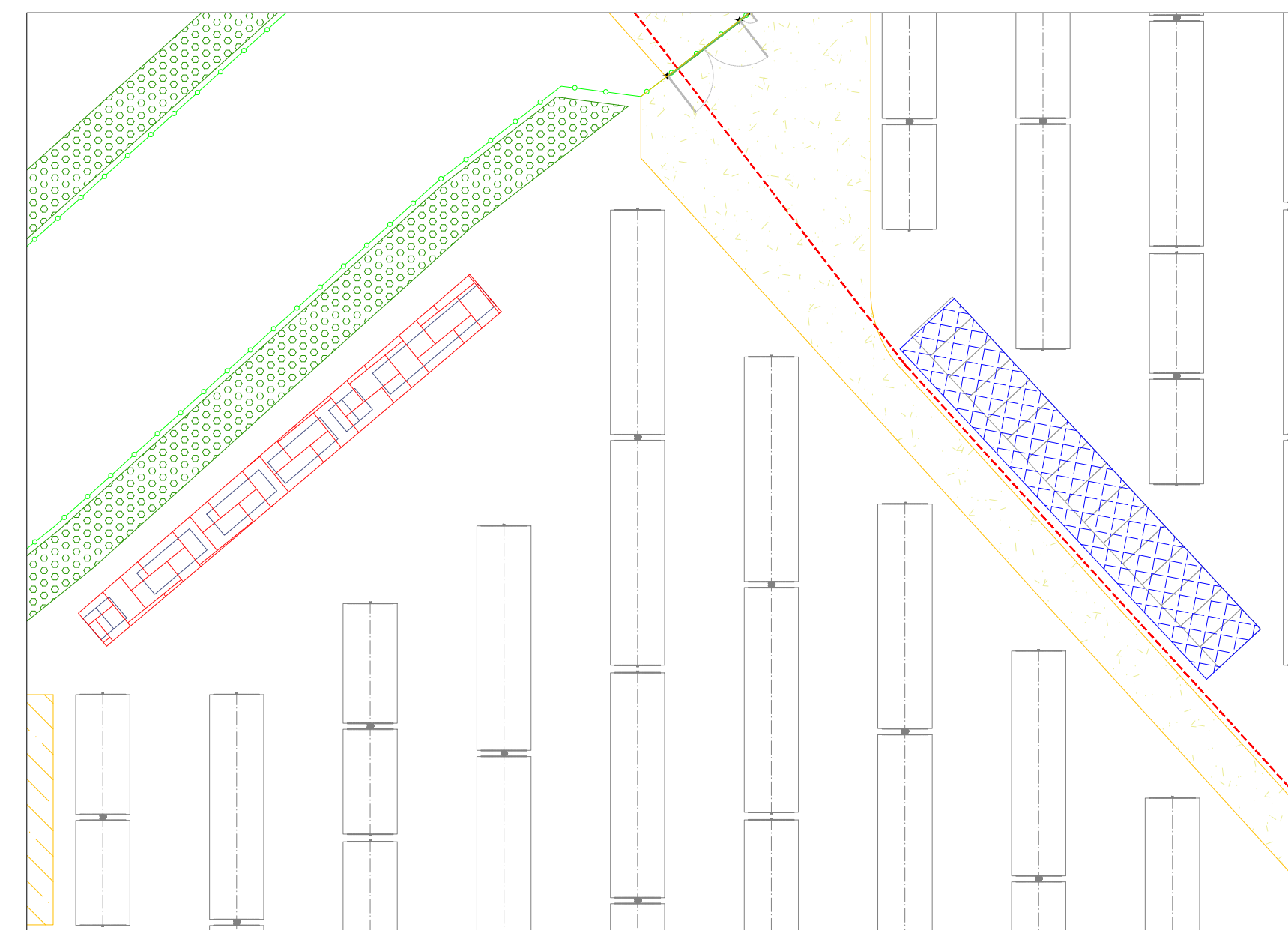
Area 16 - Scala 1:500



Area 17 - Scala 1:500



Area 18 - Scala 1:500



Legenda aree di cantiere - Impianto agro-fotovoltaico

	Area Uffici/Spogliatoi/mense/WC	735 mq
	Area parcheggio	1060 mq
	Area di stoccaggio provvisorio materiale da costruzione	13215 mq
	Area di deposito provvisorio materiale di risulta	14255 mq

LEGENDA

	Nuova Stazione RTN 150 kV
	Stazione Utente 150/30kV
	Recinzione impianto agro-fotovoltaico
	Fascia arborea perimetrale impianto agro-fotovoltaico
	Strade e piazzali impianto agro-fotovoltaico
	Canalino di accesso impianto agro-fotovoltaico
	Struttura porta moduli fotovoltaici tipo A 30x2
	Struttura porta moduli fotovoltaici tipo B 15x2
	Power Station
	Power Station sopraelevata
	Cabina ausiliaria
	Cabina ausiliaria sopraelevata
	Cabina raccolta MT
	Cabina raccolta MT sopraelevata
	Magazzino/Sala controllo
	Ricovero/Deposito agricolo
	Cavidotto MT 30kV

COMITENTE: **Hybrid Energy S.r.l.**
Via Sebastiano Caboto, 15
20094 Corsico (MI)

STUDIO DI PROGETTAZIONE: **wood** **SCM INGENGERIA**

REV.	DATE	DESCRIZIONE	APP. 1	APP. 2	APP. 3
0	FEB-22	EMESSO PER ITER AUTORIZZATIVO	DC	RT	AB

REVISIONS

APPROVED FOR CONSTRUCTION	DATE
SIGNATURE	

Comuni di Falciano del Massico e Grazzanise (CE)
PROGETTO DEFINITIVO IMPIANTO AGRO-FOTVOLTAICO

OBJECT: **TAV. 13b**
Planimetria impianto agro-fotovoltaico con identificazione aree di stoccaggio/cantiere

Questo documento è di proprietà di Hybrid Energy S.r.l. e il detentore certifica che il documento è stato creato regolarmente.
Ogni utilizzo, riproduzione o divulgazione del documento deve essere oggetto di specifica autorizzazione da parte di Hybrid Energy S.r.l.

HIS ENG. SUPERSEDED BY	SCALE
HIS ENG. SUPERSEDES	VARIE
FW ENG. N°	REV.
SHEET	841x1600