









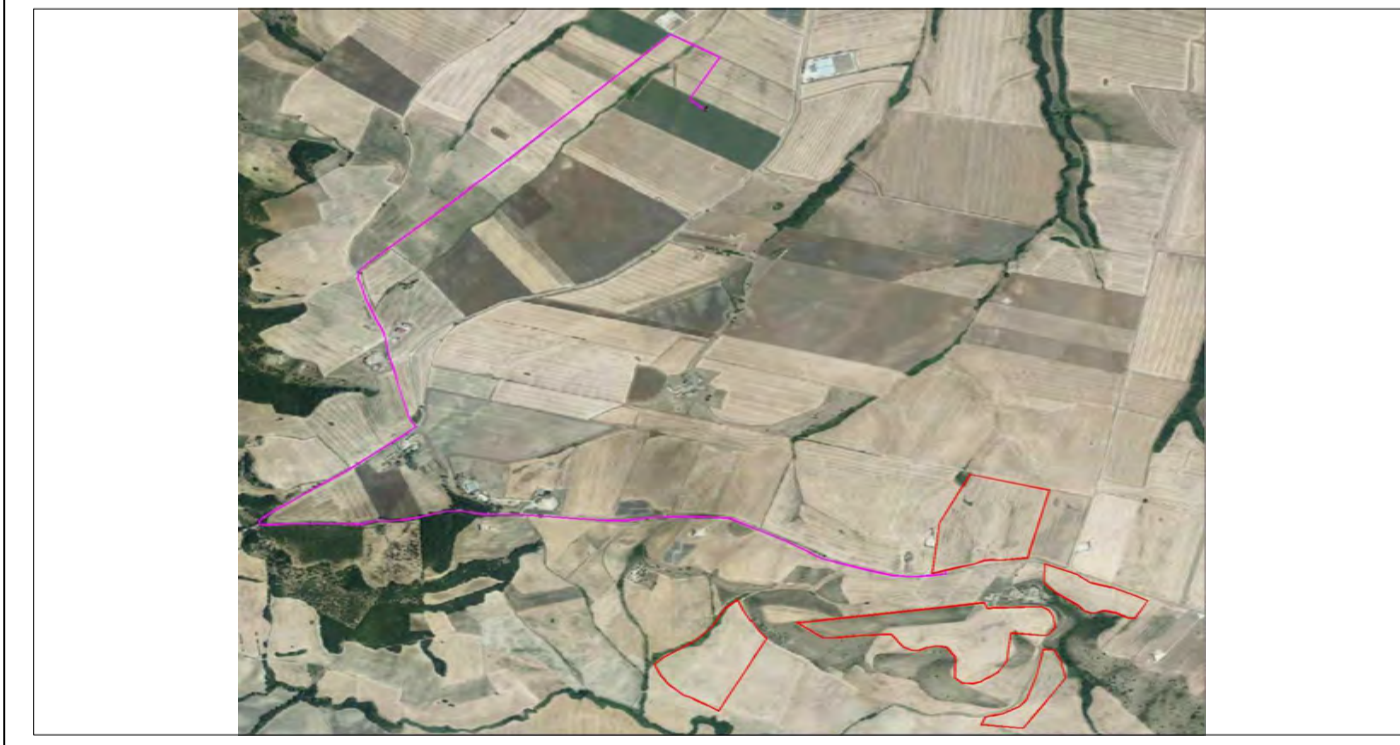
-  Area impianto fotovoltaico
-  Cavidotto esterno
-  SSE da realizzare
-  SS Utente
-  Confine Comunale
-  Confine Regionale
-  Area di intervento
-  Ambito ExtraUrbano del vigente RU di Palazzo San Gervasio

**REGIONE BASILICATA**




**COMUNE DI PALAZZO SAN GERVASIO**  
PROVINCIA DI POTENZA

**PROGETTO DEFINITIVO**  
IMPIANTO FOTOVOLTAICO AD INSEGUIMENTO SOLARE DA REALIZZARSI  
IN C.da "SAN PROCOPIO" DEL COMUNE DI PALAZZO SAN GERVASIO



ELABORATO: A. 12.a.2  
SCALA: 1: 10.000  
DATA: Novembre 2021

**STRALCIO DELLO  
STRUMENTO URBANISTICO GENERALE  
O ATTUATIVO DELL'AREA**

COMMITTENTE:  
Soc. GRETFV2 s.r.l.

PROGETTISTI:  
ING. SAVINO VERTULLI

COLLABORATORI:  
MARIAFRANCESCA VERTULLI