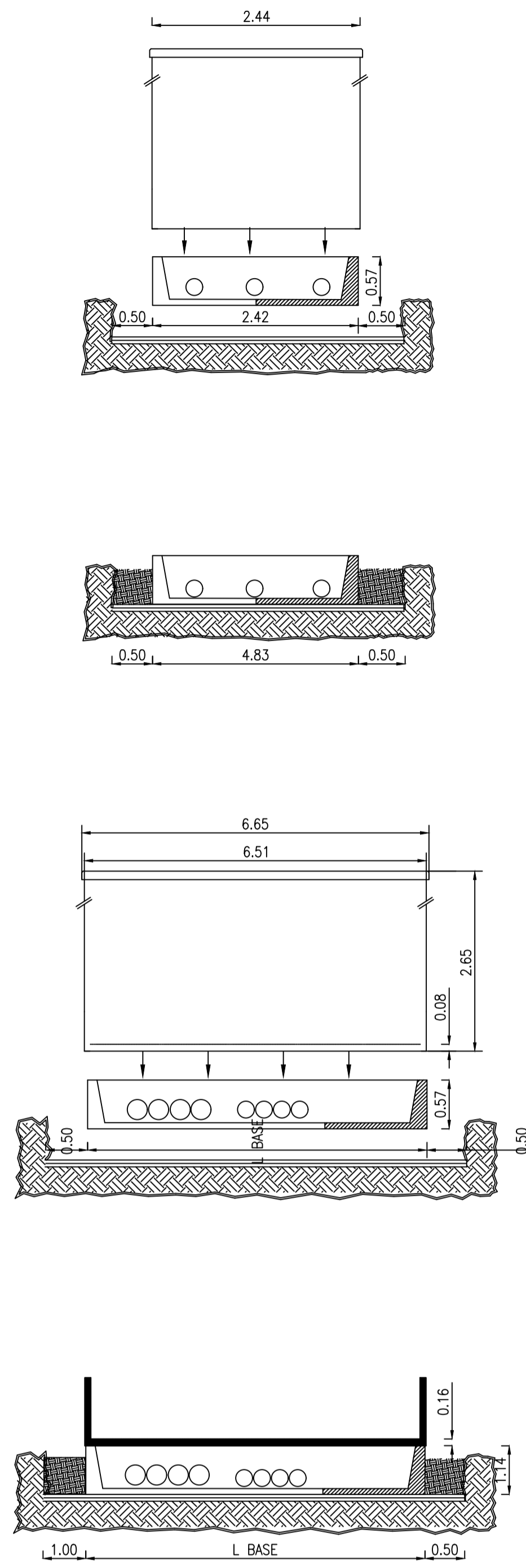
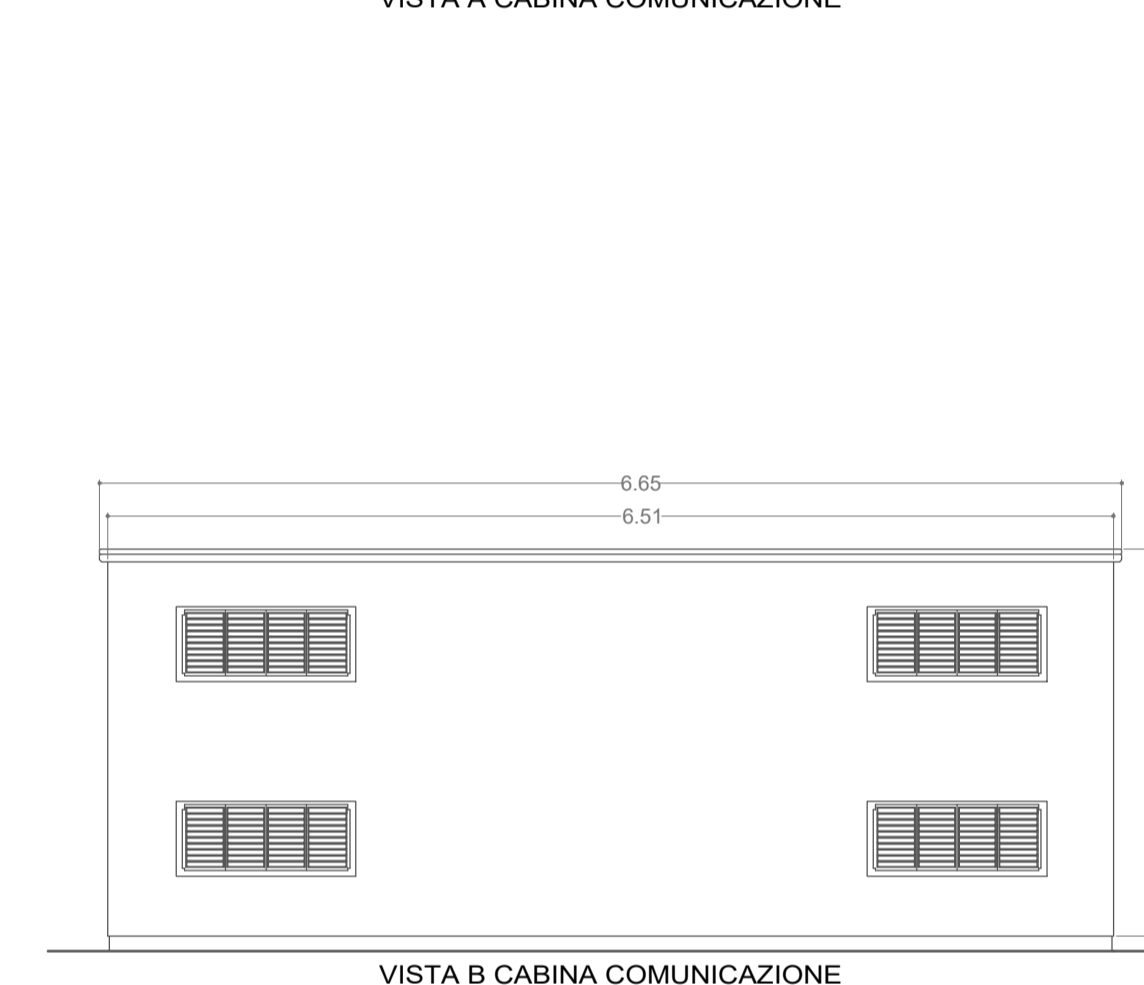
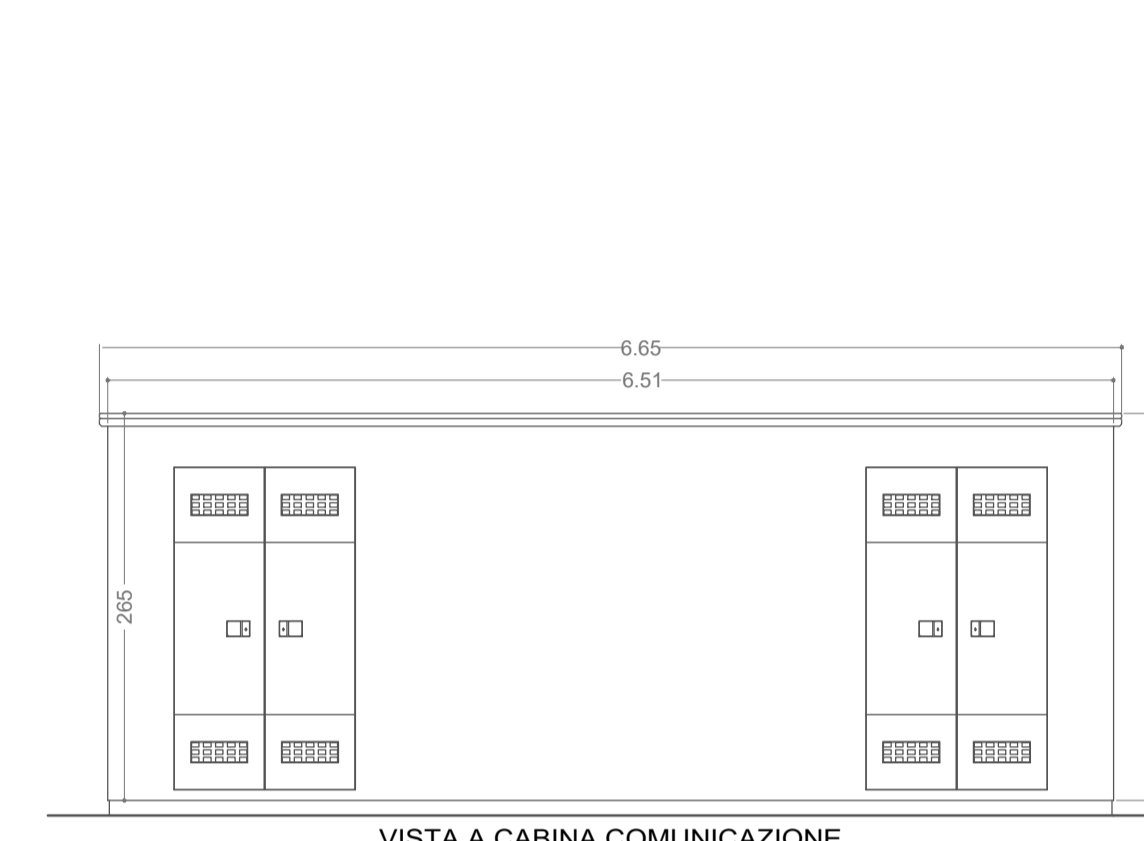
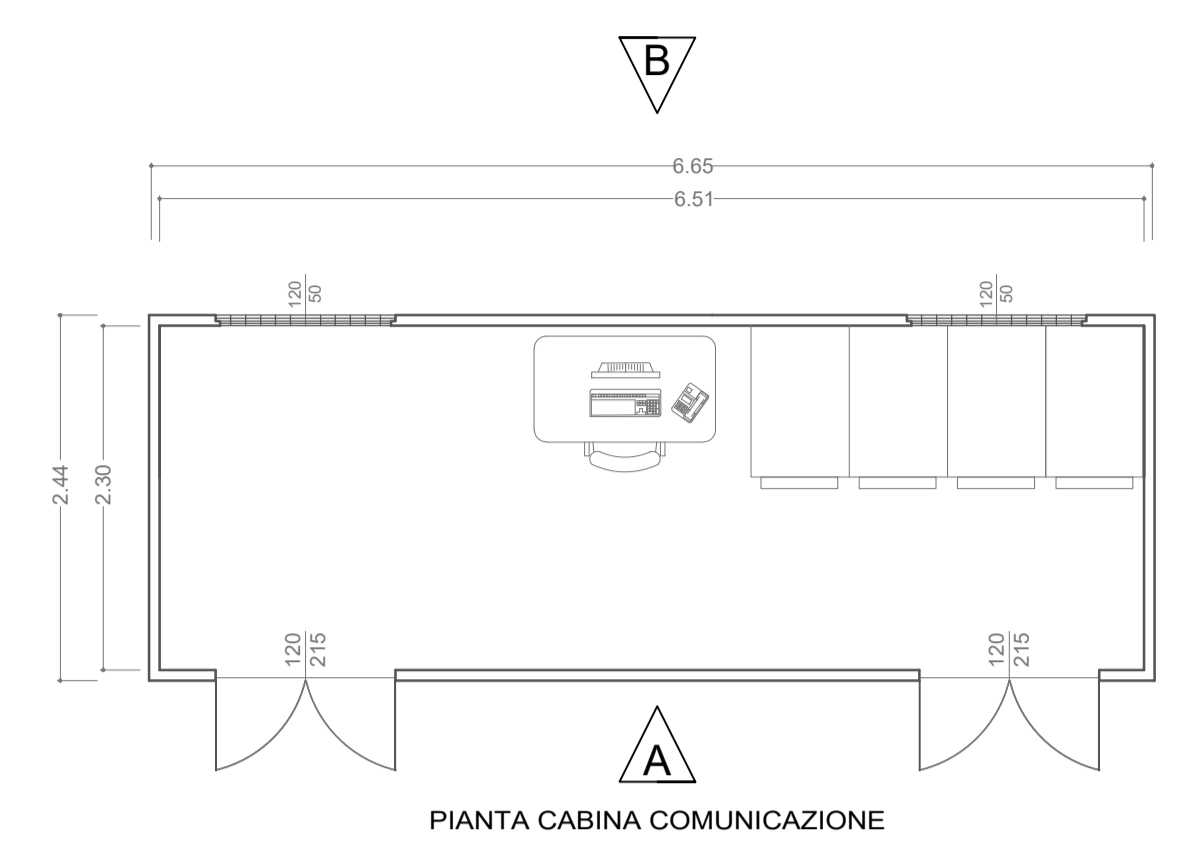


PARTICOLARE LOCALE CONTROLLO - IMPIANTO

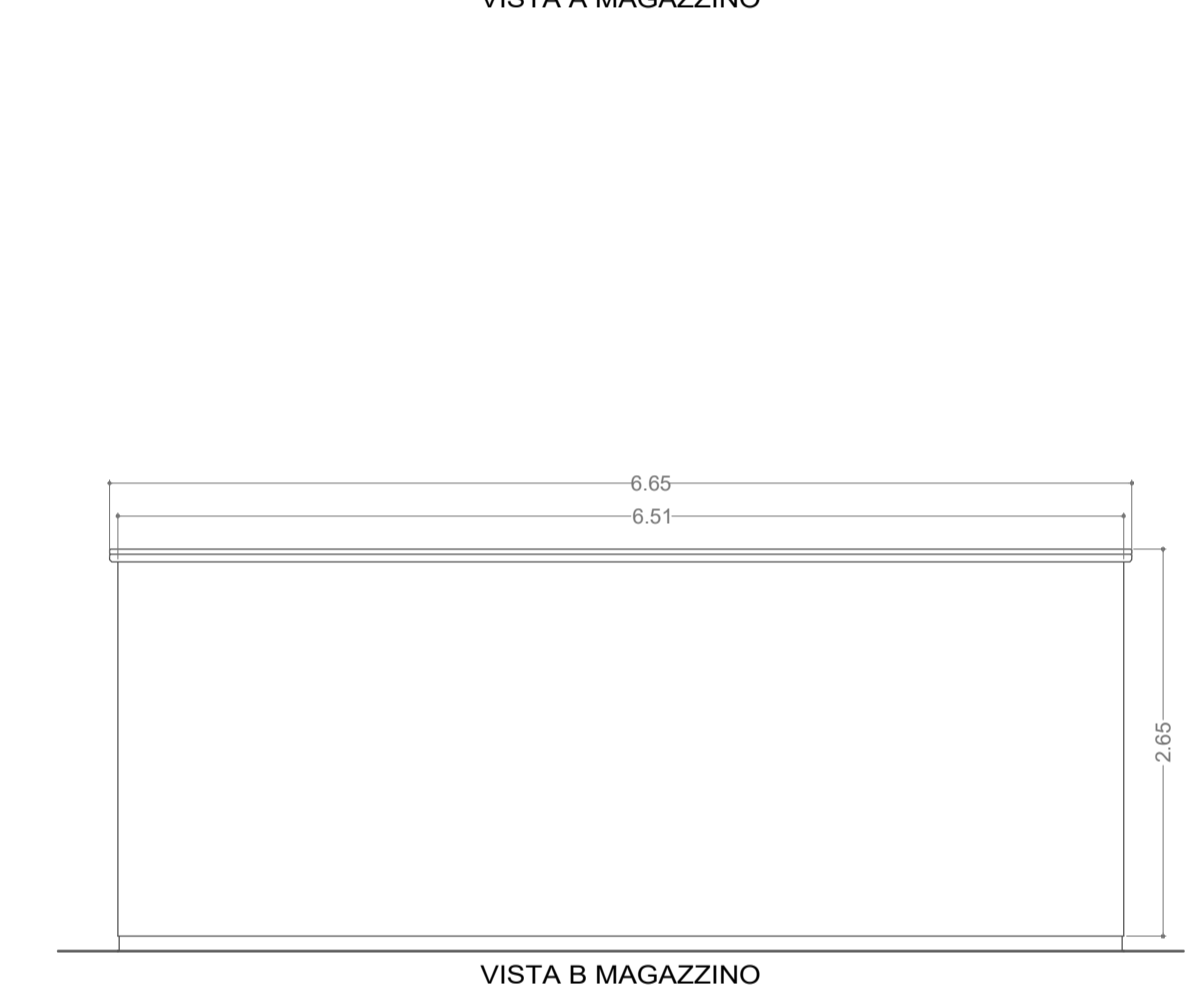
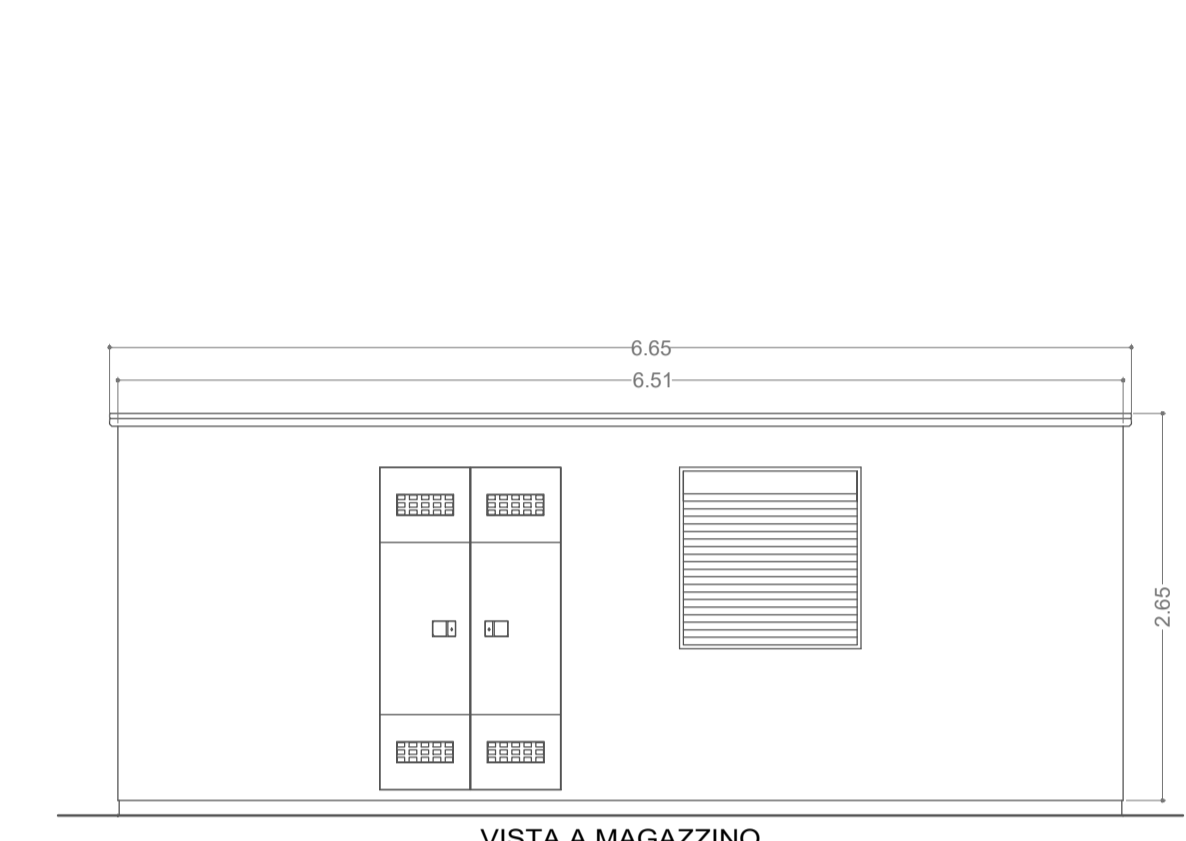
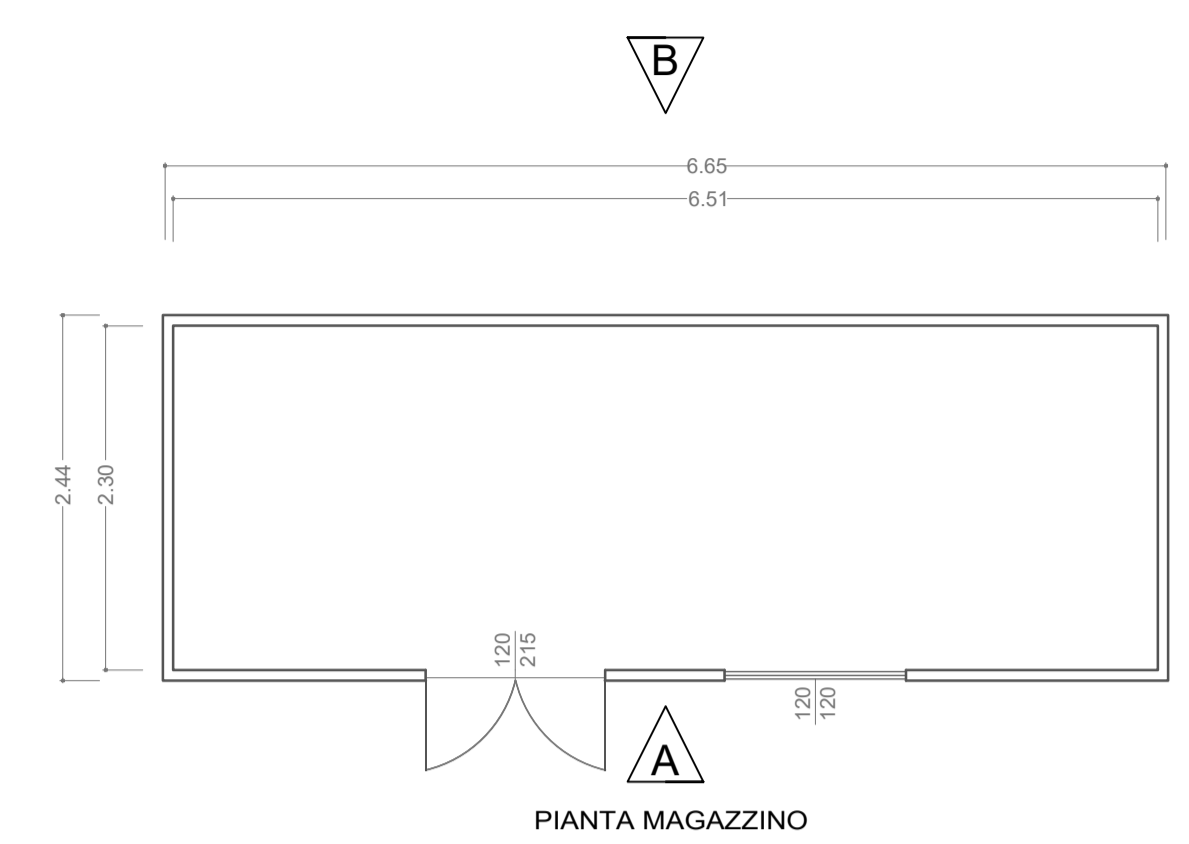
SISTEMA DI POSA DELLA CABINA



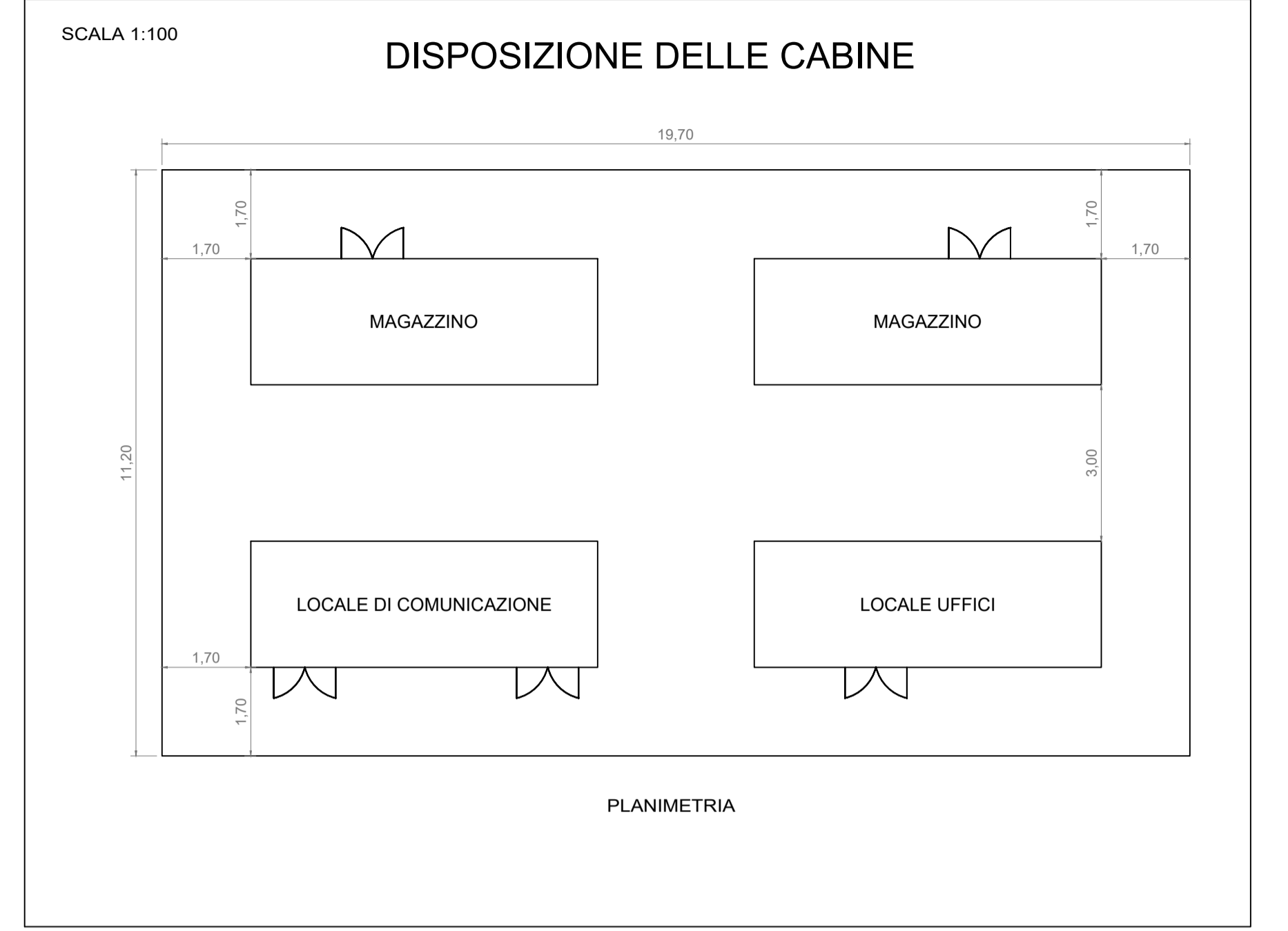
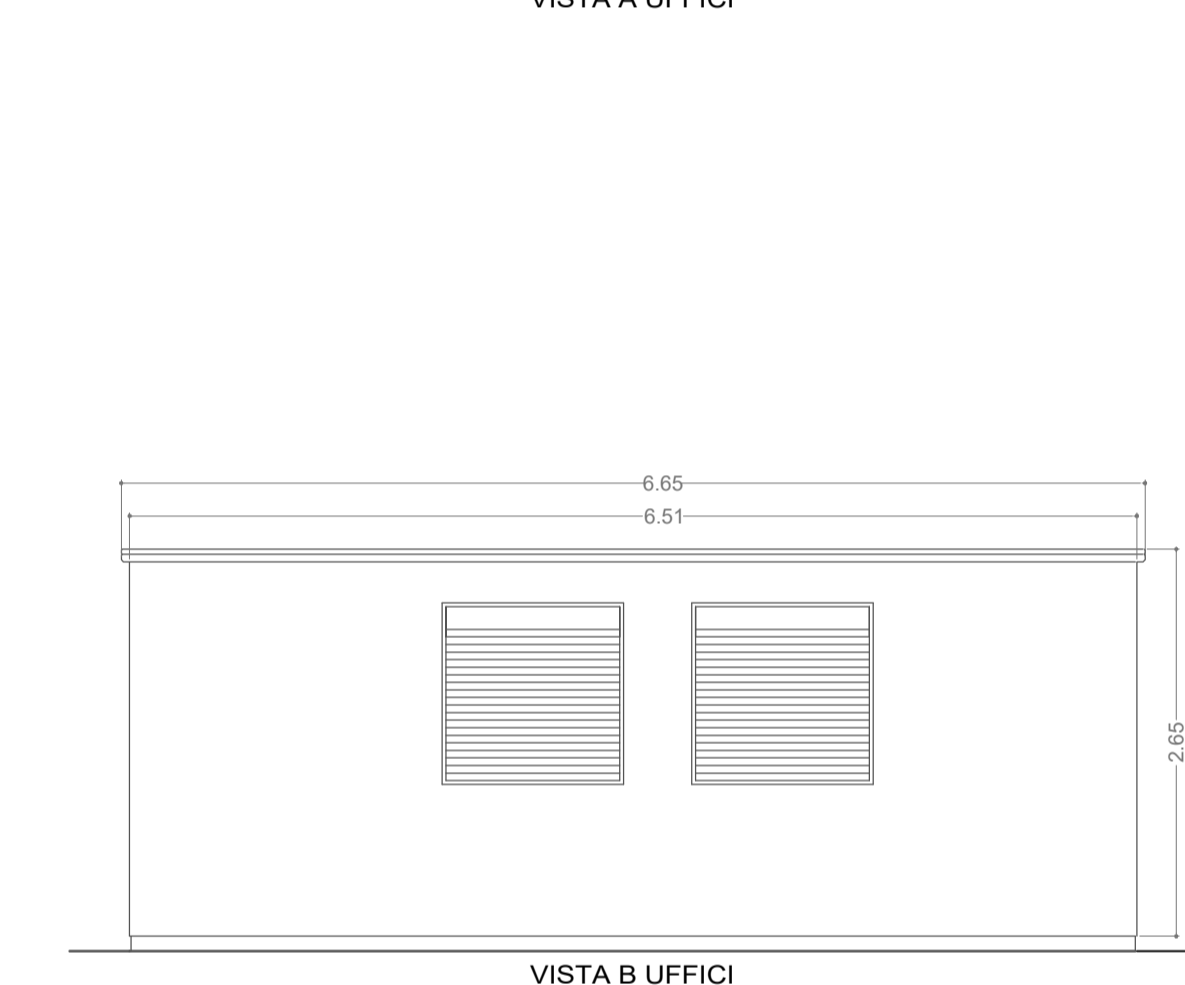
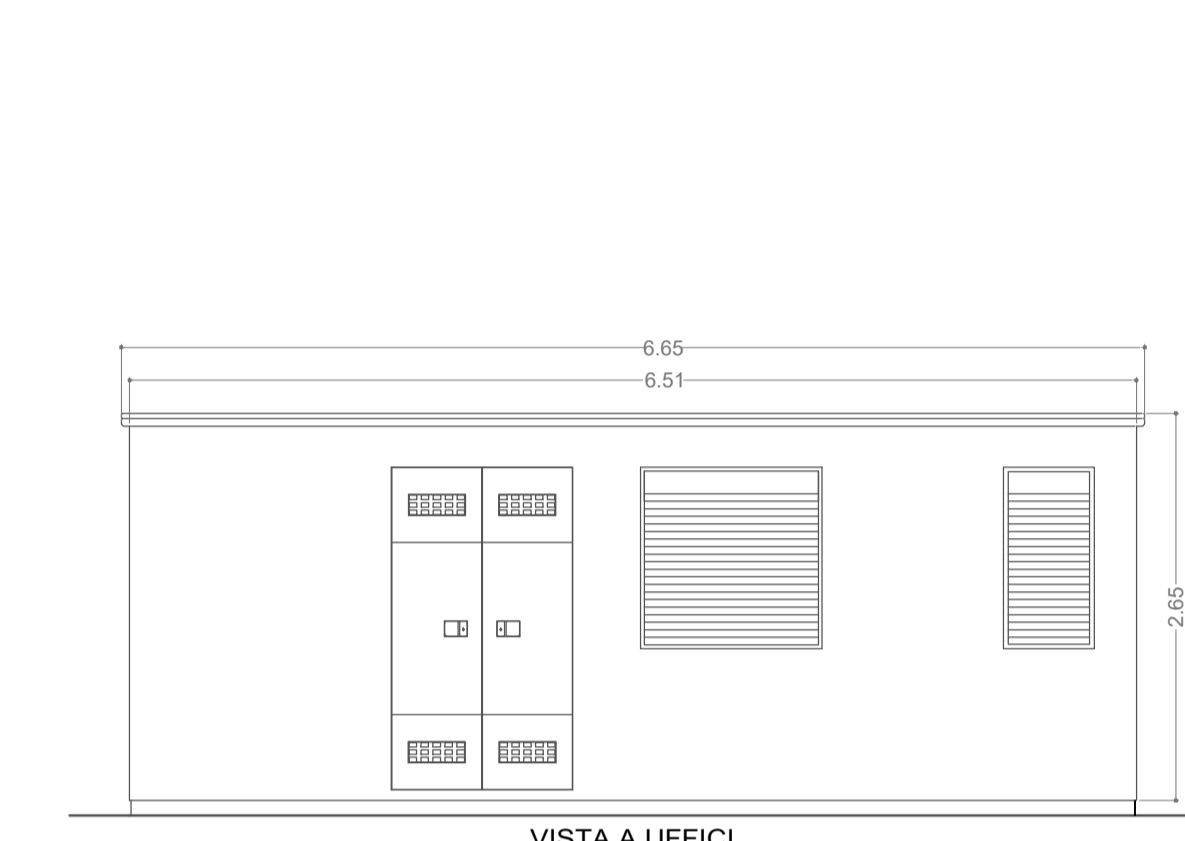
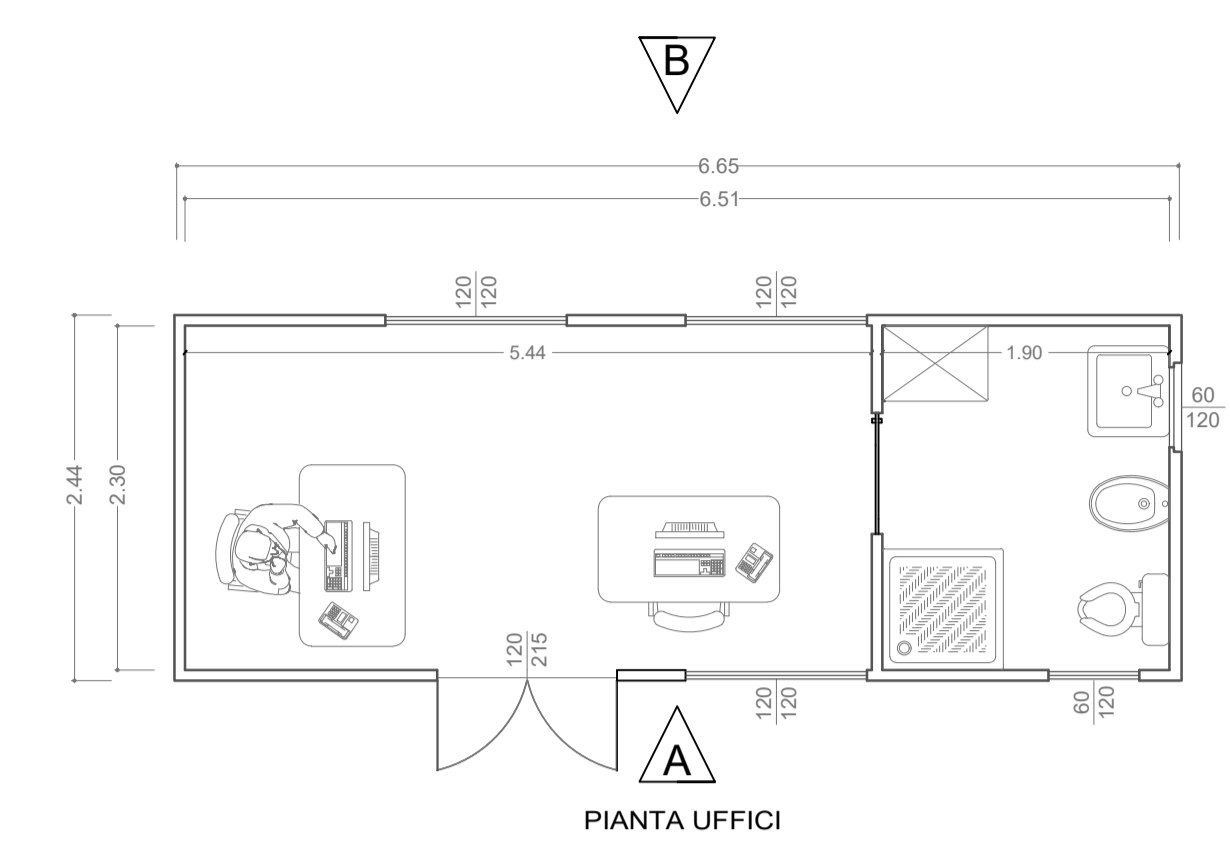
LOCALE COMUNICAZIONE



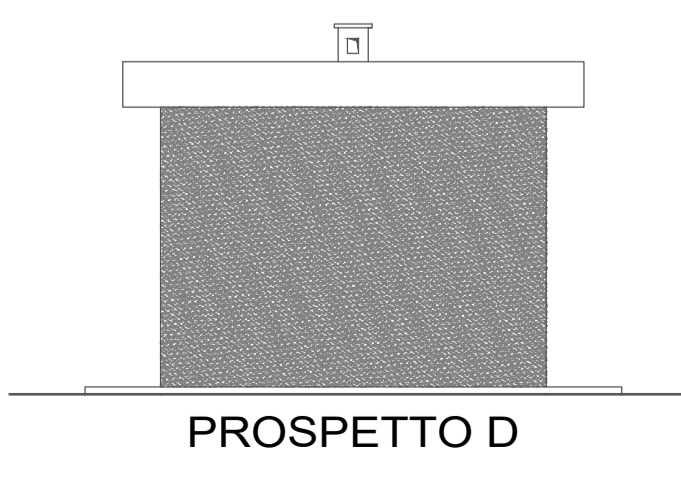
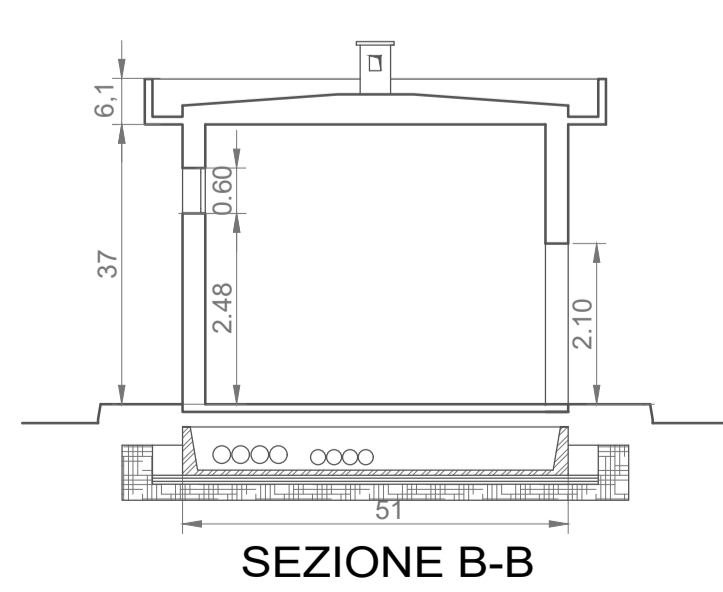
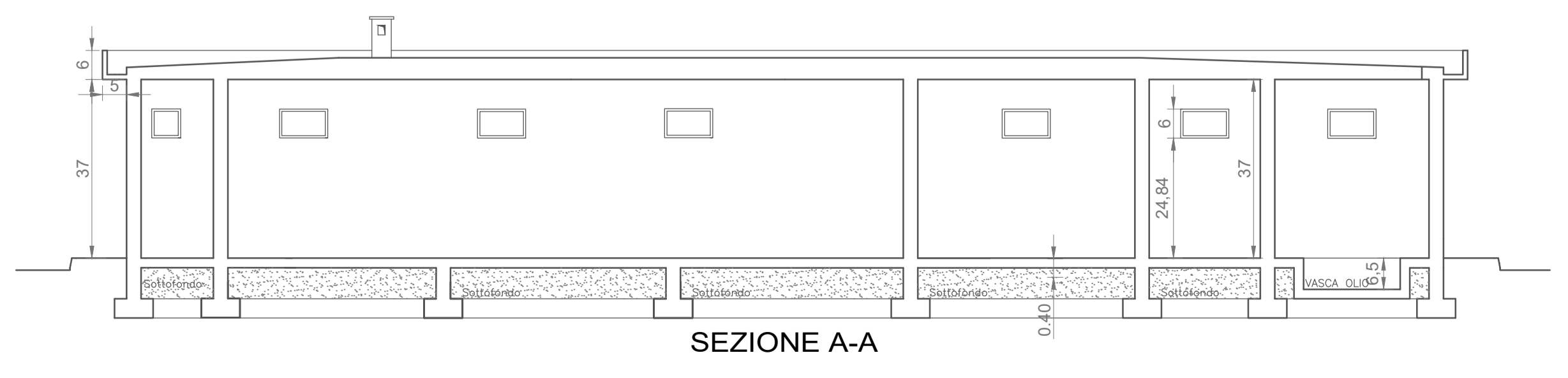
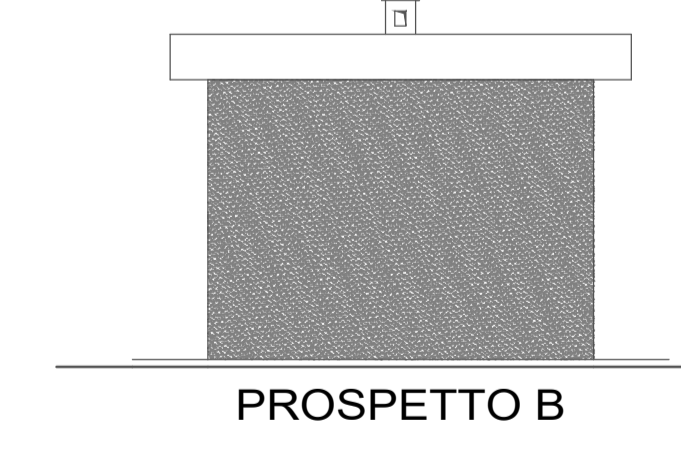
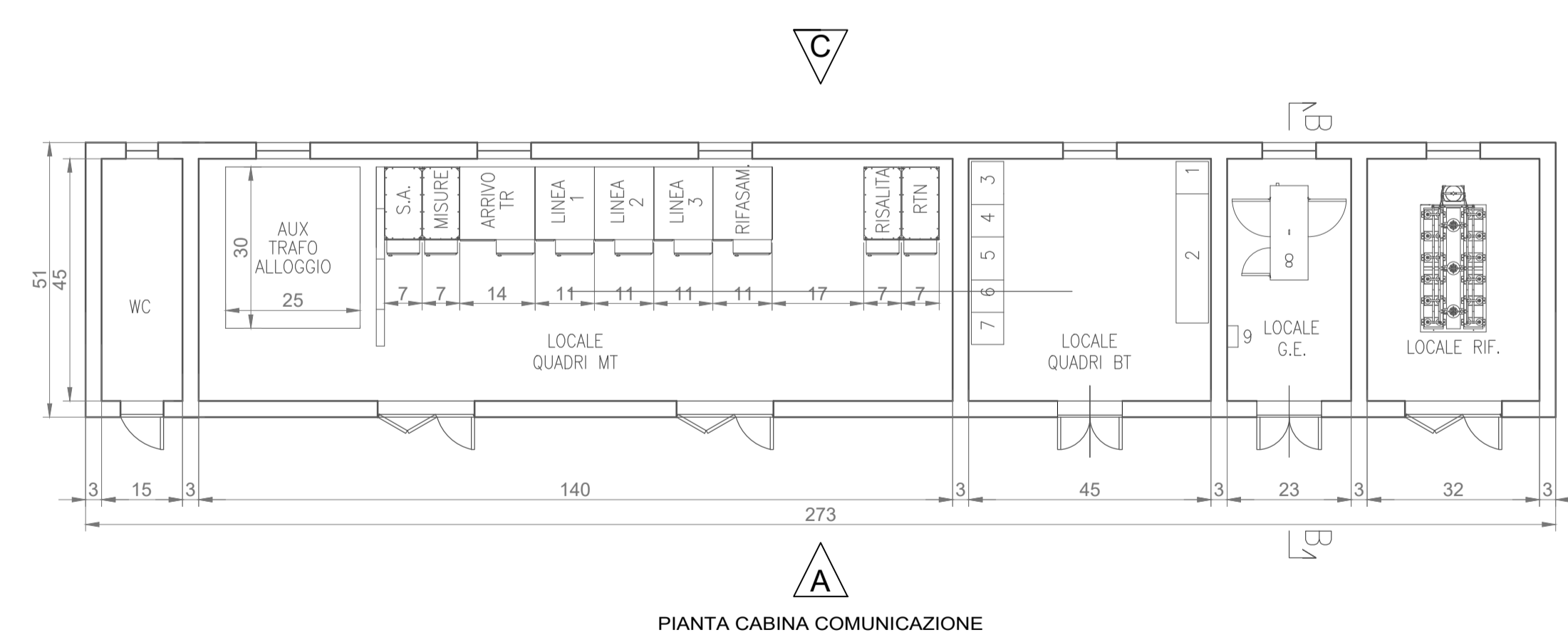
MAGAZZINO



UFFICIO



PARTICOLARE LOCALE CONSEGNA - STAZIONE UTENTE



REGIONE SICILIA
CITTA' METROPOLITANA DI PALERMO
LIBERO CONSORZIO COMUNALE DI TRAPANI

Località Impianto:
COMUNE DI GIBELLINA (TP) CONTRADA MAGIONE
COMUNE DI MONREALE (PA) CONTRADE SPIZZECA, PARRINO E TORRETTA
COMUNI DI GIBELLINA (TP) CONTRADA ABITA DI SOPRA

Località Commisione:
COMUNE DI GIBELLINA (TP) CONTRADA CASUZZE

Località Area di produzione Idrogeno:
COMUNI DI GIBELLINA (TP) CONTRADA ABITA DI SOPRA

PROGETTO DEFINITIVO
Realizzazione impianto agro-fotovoltaico denominato "S&P 9" con potenza di picco 110.271,00 kWp e potenza nominale 100.000,00 kW con annessa produzione di Idrogeno

PROFONTE	EPD	PROGRESSIVO	REV	DATA:
SP9	009	00		22/01/2022

Elaborato: SP9EPD009_00-Sep_9-IMPIANTO-IT-CMCU- Particolare_locale_consegna_misura_controllo_e_utente

TAV: EPD009 SCALA: 1:50

PROGETTISTE:
Ing. Sapienza Angelo
Ing. Rezzano Vincenzo

SOCIETA': S&P 9 S.R.L. SICILIA E PROGRESSO
sede legale: Corso del Mille 312, 90047 Partinico (PA)
C.F.: 08974500823 tel.: 0919660917 fax: 0918020255
email: svilupposp9@gmail.com pec: svilupposp9@pec.it

SP9
SICILIA E PROGRESSO