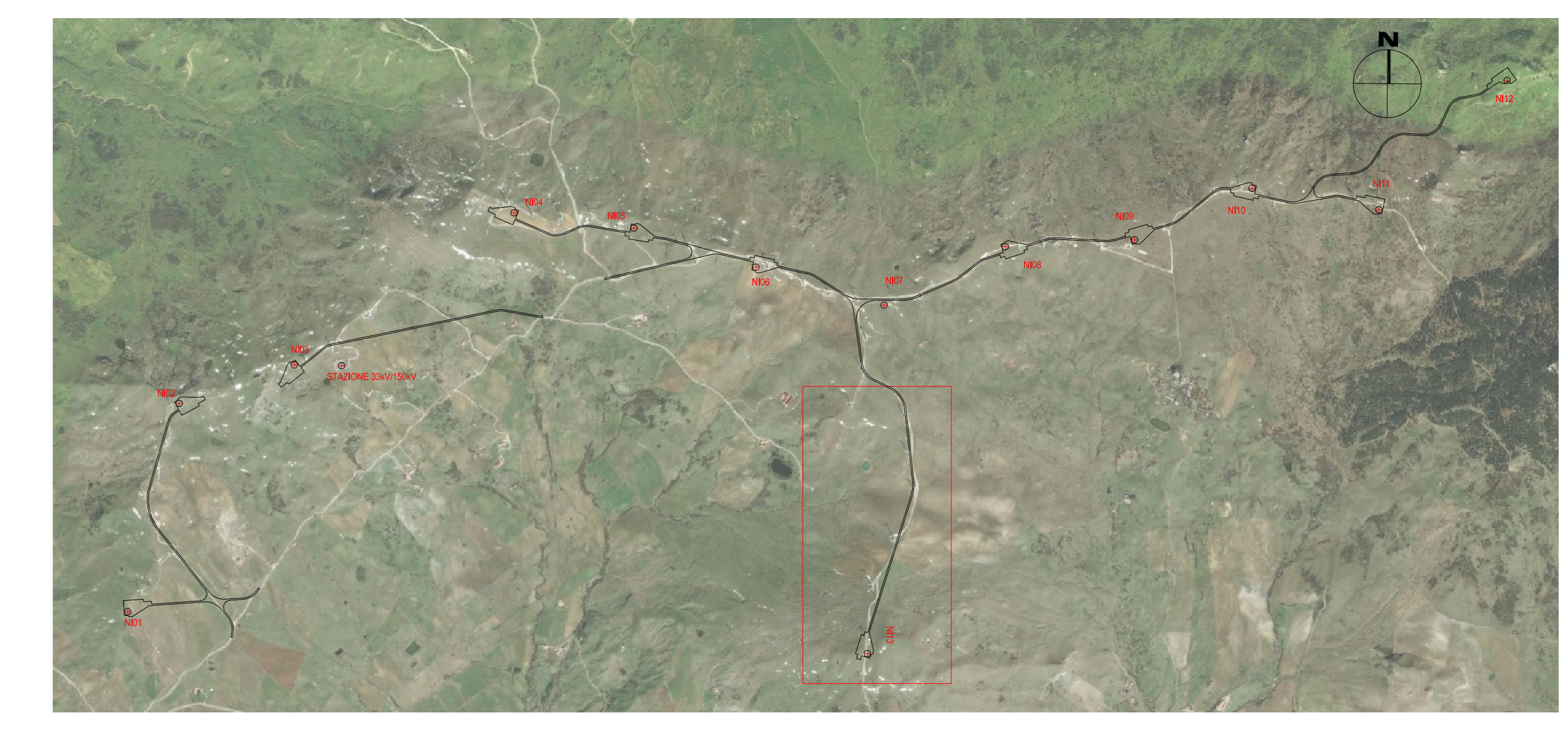
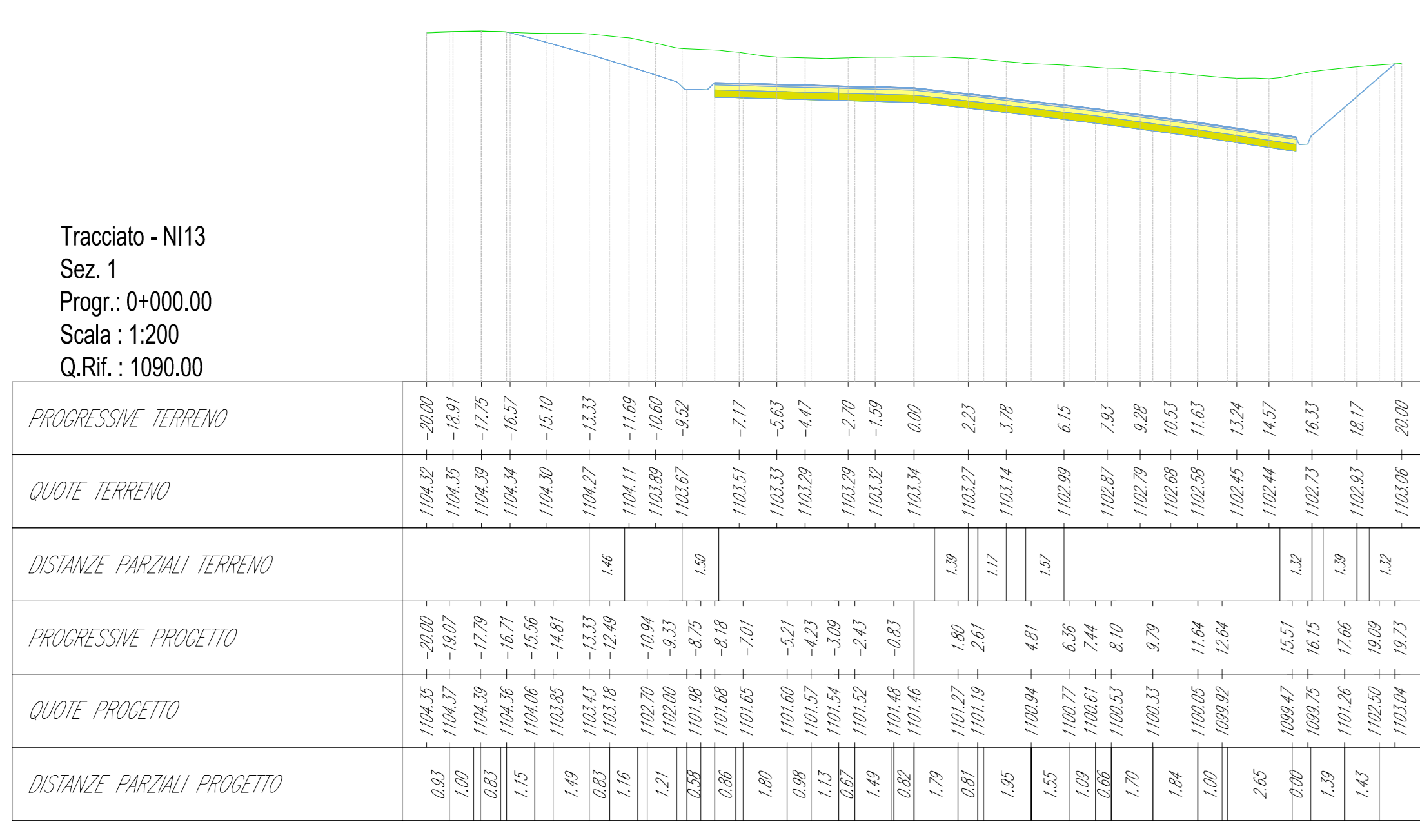


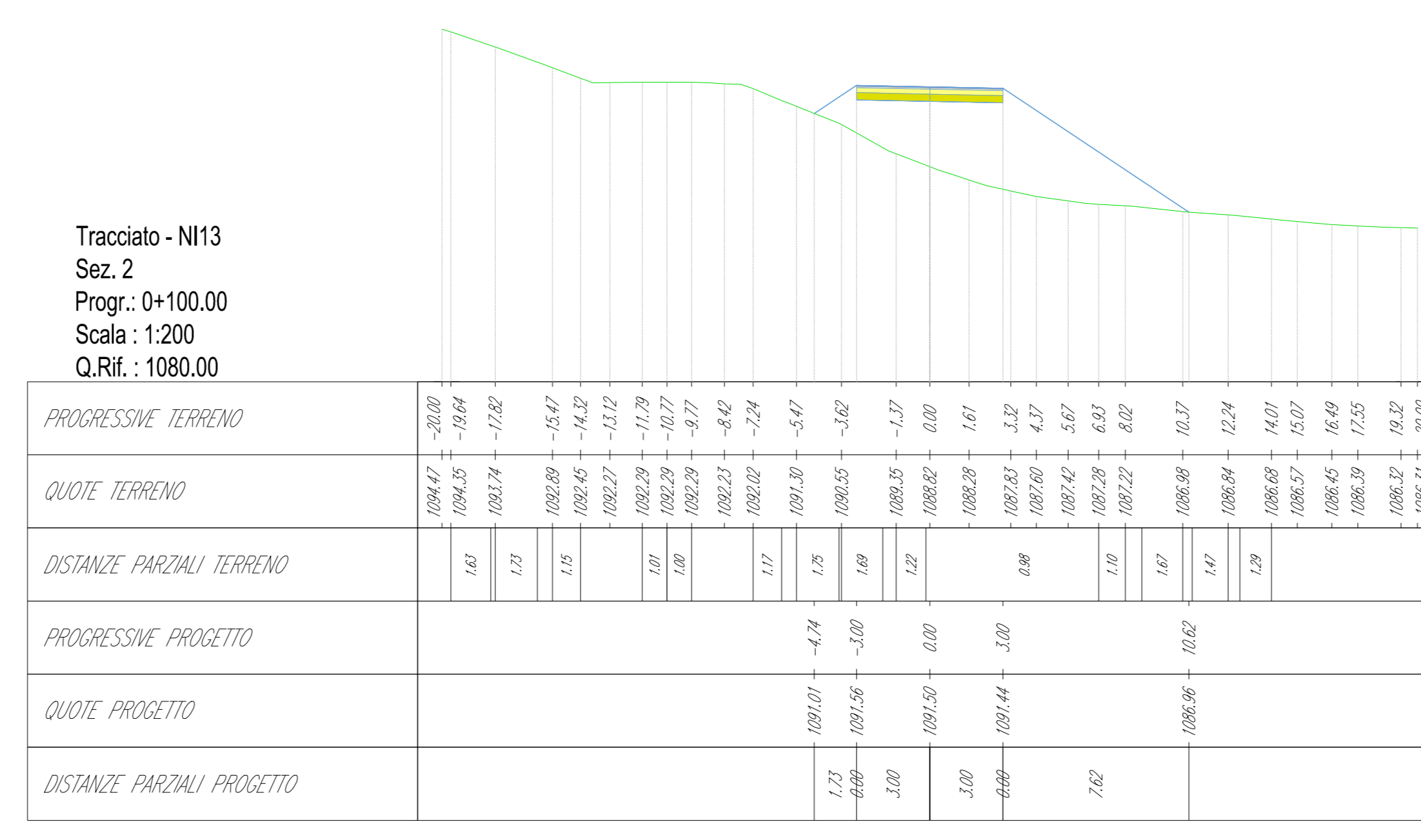
KEY MAP



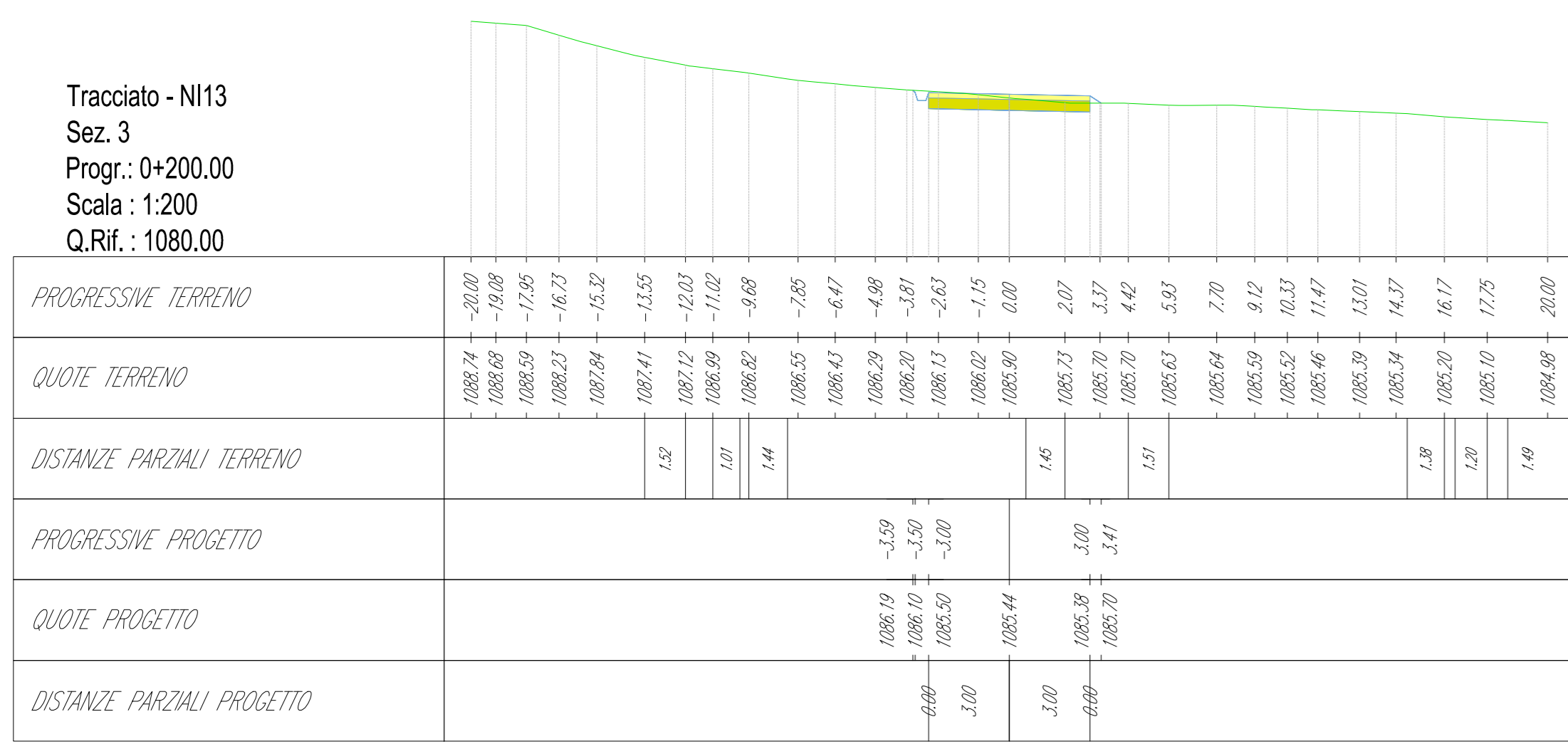
Tracciato - NI13
Sez. 1
Progr.: 0+000.00
Scala: 1:200
Q.Rif.: 1080.00



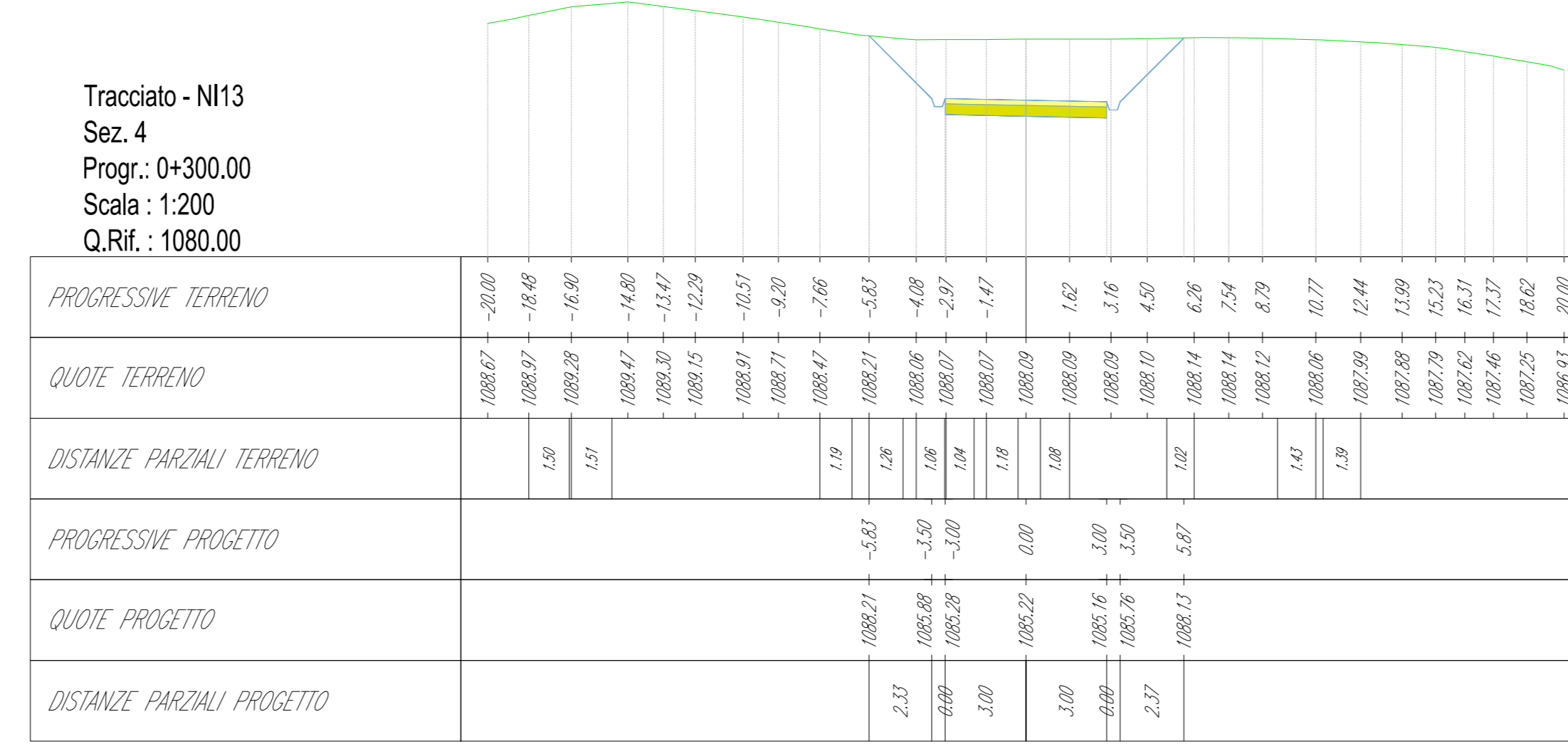
Tracciato - NI13
Sez. 2
Progr.: 0+100.00
Scala: 1:200
Q.Rif.: 1080.00



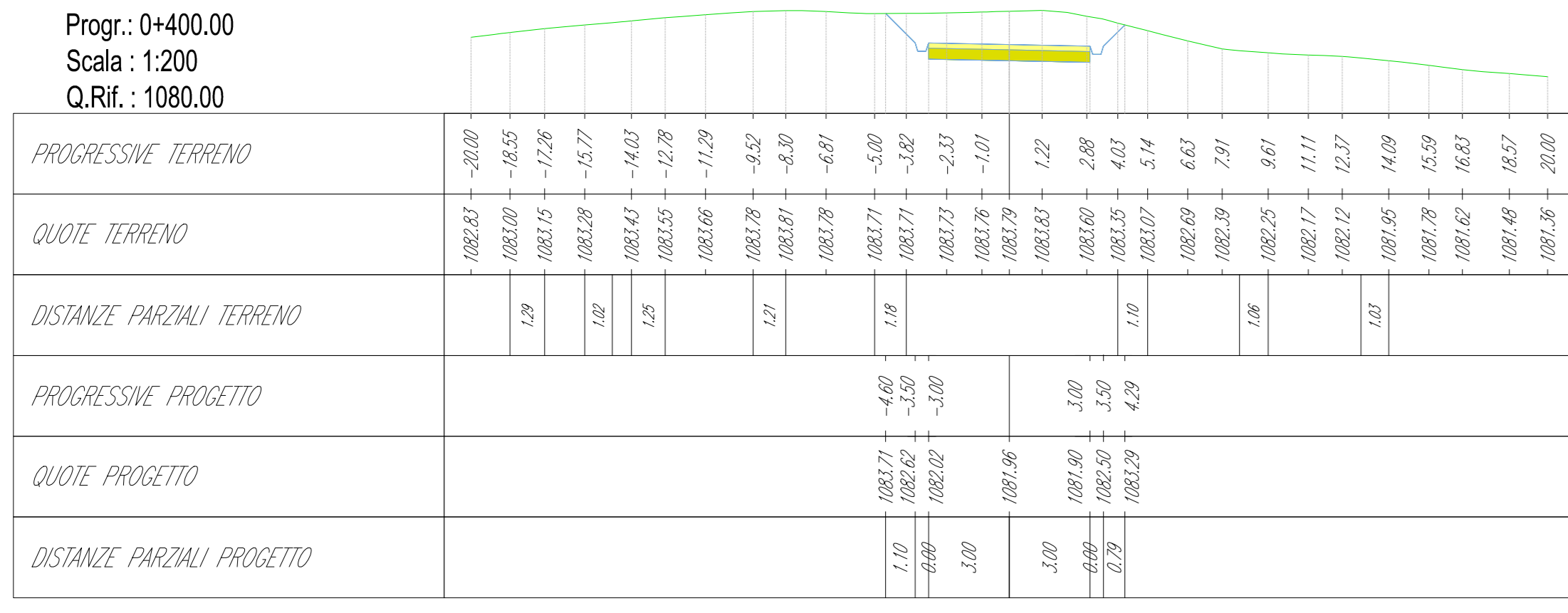
Tracciato - NI13
Sez. 3
Progr.: 0+200.00
Scala: 1:200
Q.Rif.: 1080.00



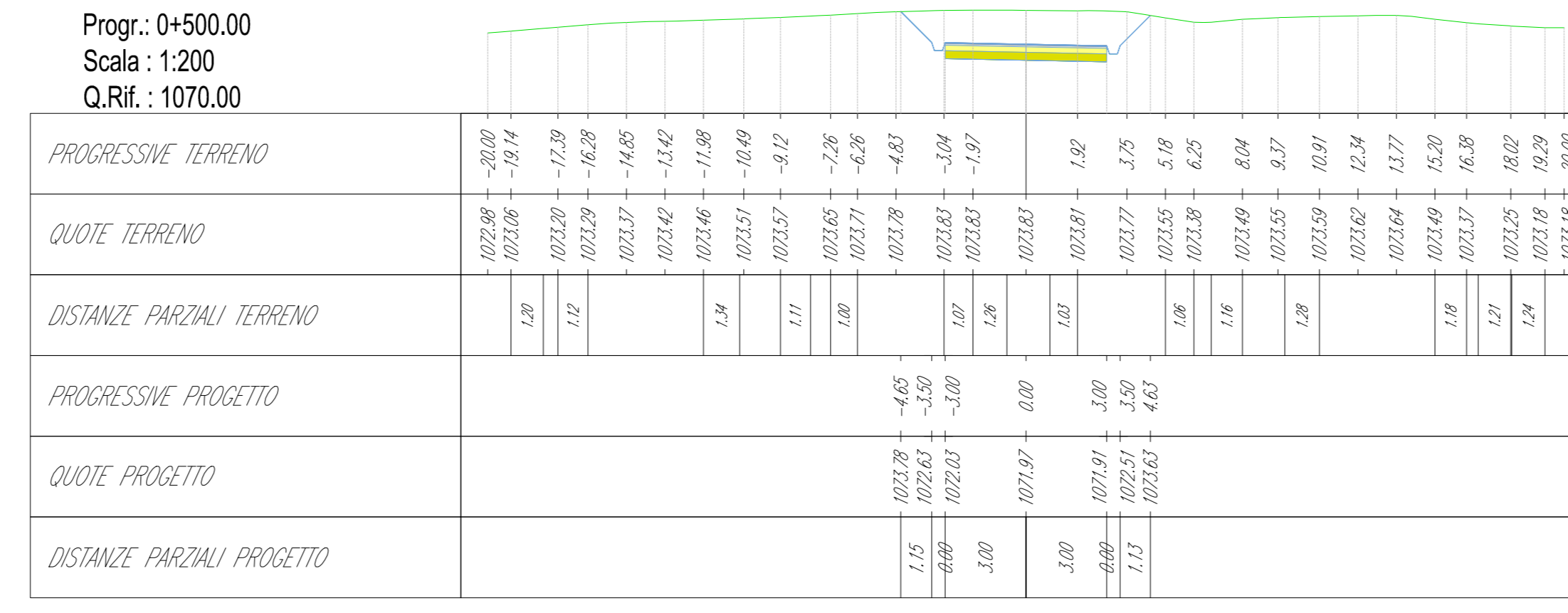
Tracciato - NI13
Sez. 4
Progr.: 0+300.00
Scala: 1:200
Q.Rif.: 1080.00



Tracciato - NI13
Sez. 5
Progr.: 0+400.00
Scala: 1:200
Q.Rif.: 1080.00



Tracciato - NI13
Sez. 6
Progr.: 0+500.00
Scala: 1:200
Q.Rif.: 1070.00



01	2020.06.04	Integrati comments	M.Terzi	N.Novati	L.Lavazza
00	2020.07.03	Prima Emissione	M.Terzi	N.Novati	L.Lavazza
REV.	DATE	DESCRIPTION	PREPARED	CHECKED	APPROVED
PROJECT: INTEGRALE RICOSTRUZIONE DELL'IMPIANTO EOLICO DI NICOSIA					
Stantec		FILE NAME: GRE.EEC.D.73.ITW.1242015.001.01 - Layout Strade			
enel		CLASSIFICATION: PUBLIC	FORMAT: A0	SCALE: 1:200	PLOT SCALE: 1:1
EGP VALIDATION		UTILIZATION SCOPE: BASIC DESIGN			
EGP VALIDATION		TITLE: LAYOUT STRADE NI13 - PISTA DI ACCESSO E PIAZZOLA Sezioni			
VALIDATED BY: Sabatino	EGP CODE				
VERIFIED BY: Sabatino	GROUP: GRE.EEC	FUNCTION: D73	TYPE: ITW	COUNTRY: 1242015	PLANT: 001.01
COLLABORATORS:	GRE.EEC D73 ITW124201500101				