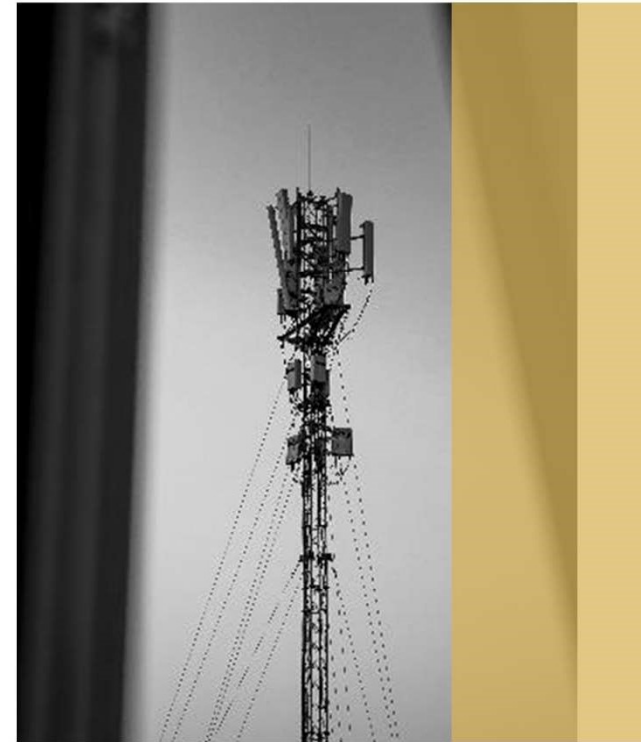




COMPANY PROFILE



Profile



CEIT PROVIDES SUPPLY, INSTALLATIONS AND MAINTENANCE SERVICES IN TELECOMMUNICATIONS, ENERGY AND TRANSPORTATION MARKETS ENSURING ITS CUSTOMERS HIGH QUALITY STANDARDS AND CONTINUOUS SUPPORT.

OPERATING FOR OVER 30 YEARS , CEIT IS NOW ONE OF THE LEADING ITALIAN COMPANIES TO WHICH NATIONAL CARRIERS AND MAIN VENDORS ENTRUST THEIR STRATEGIC ASSETS,



Igefi Holding Group



CEIT IS A COMPANY OF IGEFI GROUP, OPERATING FOR MORE THAN 70 YEARS IN THE TELECOMMUNICATIONS, COSTRUCTION, ENVIRONMENT, GEOTECHNICS AND OIL&GAS SECTORS

BEING PART OF IGEFI ENHANCES CEIT PERFORMANCES, ENABLING SHARING OF EXPERTISES AND EXPERIENCES ON BUSINESS, TECHNOLOGIES AND OPERATIONAL PROCESSES



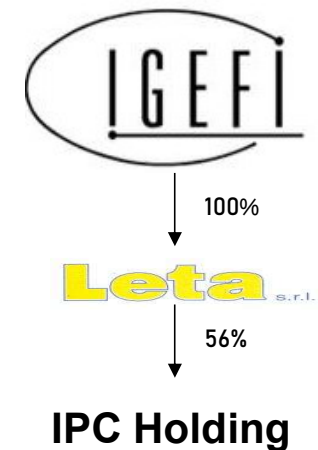
REVENUES - 1,1 billion €

EMPLOYEES - 7.500

IPC Holding for FTV Projects

**IGEFI GROUP INVESTS ON FOTOVOLTAIC PROJECTS
DEVELOPMENT THROUGH IPC HOLDING.**

*IPC Shareholders holds a long track record in the field
of development, construction and management of power
plants fed by renewables*

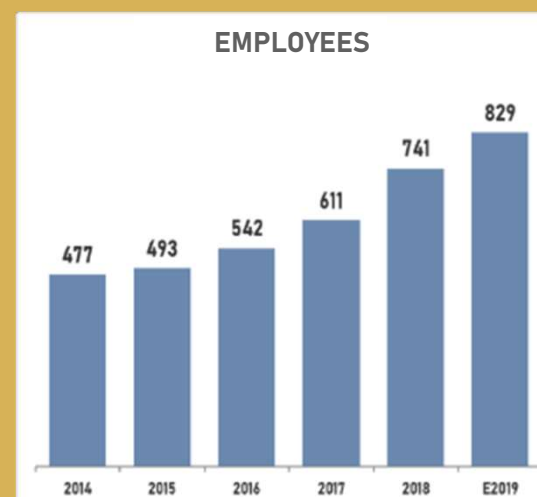
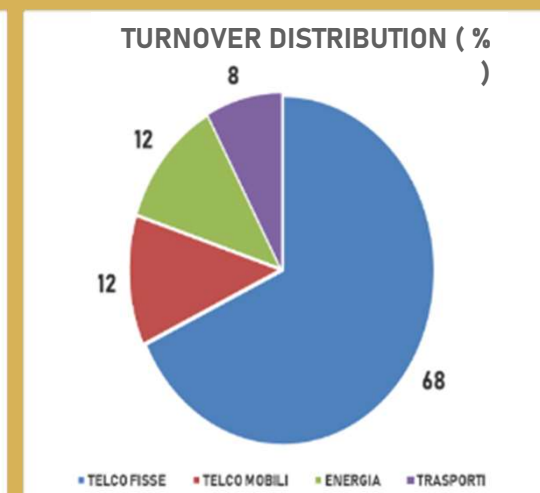
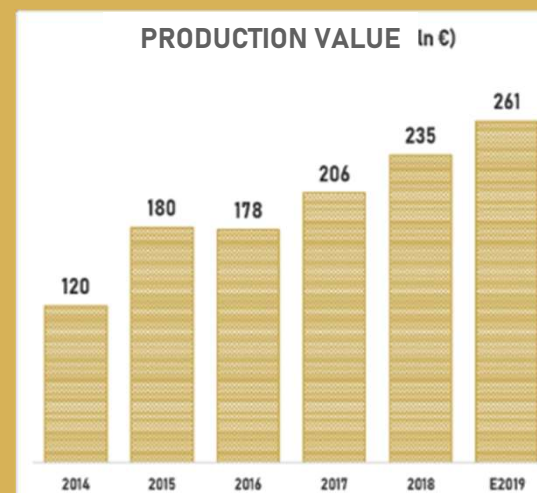


**PIPELINE OF FTV PROJECTS UNDER DEVELOPMENT:
500 MW LOCATED IN SARDINIA, SICILY AND PUGLIA**

Highlights 2019

IN 2019 CEIT CONFIRMS ITS POSITION AS MARKET LEADER, ACHIEVING EXCELLENT RESULTS DUE TO HIGH SKILLS AND MOTIVATION OF ITS HUMAN RESOURCES.

CEIT CONTINUOUSLY PAYS THE GREATEST ATTENTION TO SAFETY AND HEALTHY OF ITS WORKERS AND PRODUCTION ASSETS.



Quality Management System

RESPONSIBLE MANAGEMENT OF
EFFECTIVENESS AND EFFICIENCY OF OWN
PROCESSES, PERFORMANCES
AWARENESS AND CONTINUOUS
MEASUREMENT OF TARGETS ACHIEVEMENT
LEVELS, ENABLE A SERVICES QUALITY
PERFECTLY MATCHING ALL CUSTOMER'S
NEEDS AND EXPECTATIONS

ISO 9001

ISO 14001

ISO 45001

ISO 50001

SA 8000

**UNI CEI
11352 ESCO**

FGAS

Certifications



SOA		
CATEGORIA	CLASSE	IMPORTO (m€)
OG1	VII	fino a 15,494
OG3	VII	fino a 15,494
OG6	II	fino a 0,516
OG9	VIII	illimitata
OG10	VIII	illimitata
OG11	III	fino a 1,033
OS1	VII	fino a 15,494
OS5	II	fino a 0,516
OS9	VIII	illimitata
OS17	VIII	illimitata
OS19	VIII	illimitata
OS27	III-BIS	fino a 1,500
OS28	II	fino a 0,516
OS30	VIII	illimitata
OS35	VII	fino a 15,494

LEGALITY
RATING



ANTIMAFIA WHITE LIST
CHIETI PREFECTURE

REALIZZAZIONE IMPIANTI DI SEGNALAMENTO FERROVIARIO - SQ005

CATEGORIA	CLASSE	IMPORTI
LIS-A	VII	illimitato
LIS-C	VII	illimitato

REALIZZAZIONE IMPIANTI DI TRAZIONE ELETTRICA - SQ001

CATEGORIA	CLASSE	IMPORTI
LTE-001	I	fino a 0,52 mln €
LTE-002	I	fino a 0,52 mln €
LTE-003	I	fino a 0,52 mln €
LTE-004	I	fino a 0,52 mln €

TG - PROGETT. E REALIZZ. IMPIANTI EMERGENZA GALLERIE - SQ13

CATEGORIA	CLASSE	IMPORTI
TG-001	I	fino a 2 mln €
TG-002	III	fino a 5 mln €
TG-003	III	fino a 5 mln €
TG-004	I	fino a 2 mln €
TG-005	I	fino a 2 mln €

ESECUZIONE DI LAVORI CIVILI SU LINEE DI ESERCIZIO - SQ011

CATEGORIA	CLASSE	IMPORTI
LOC-001	I	fino a 0,5 mln €

e-distribuzione

SETTORE MT BT		
CATEGORIA	ATTIVITA'	IMPORTI
LELE05	Lavori su Impianti MT/BT	fino a 25 mln €
LELE08	Posa fibra ottica su reti elettriche	illimitato
LEII10	Sostituzione massiva gruppi di misura	fino a 2 mln €
LEII06	Realizzazione Impianti Fotovoltaici	fino a 1 mln €
LEII15	Impianti fotovoltaici su tetto	fino a 1 mln €
LCCC21	Impianti di generazione eolica	illimitato



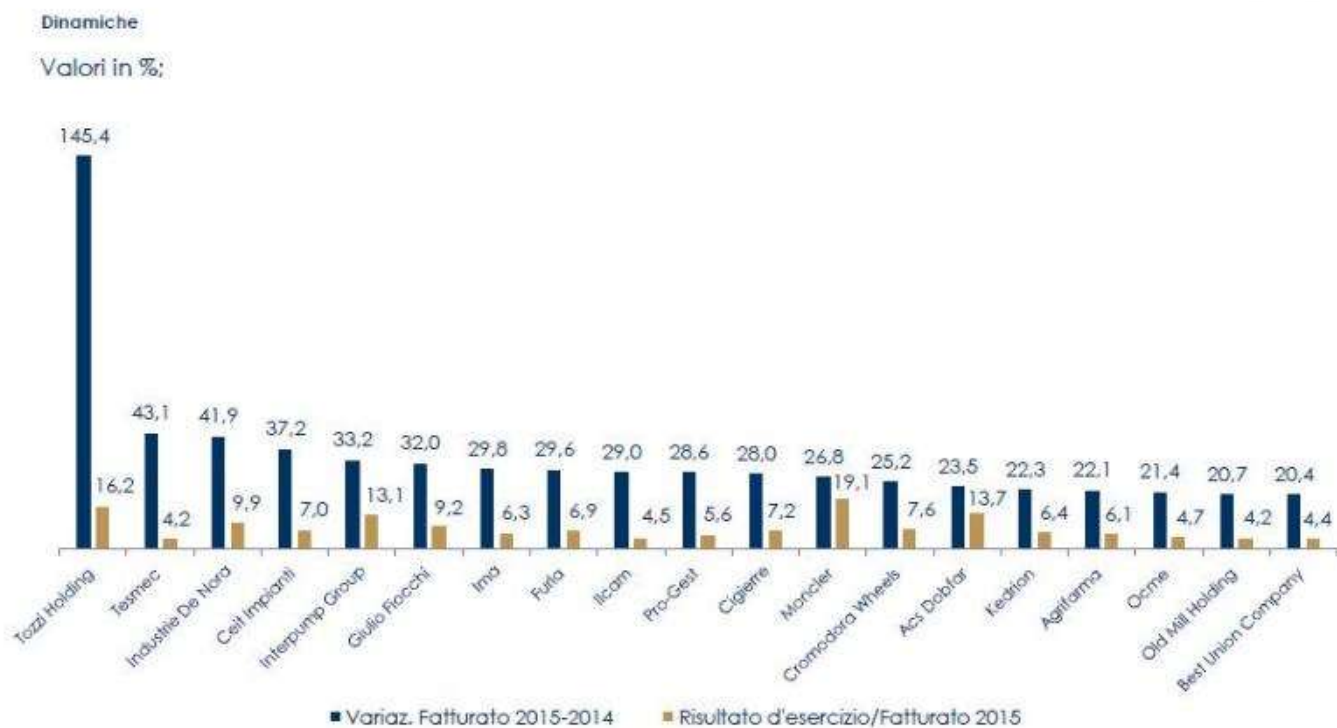
SETTORE AT	
CATEGORIA	ATTIVITA'
LELE-02	Lavori su elettrodotti aerei 150 kV
LELE-04	Lavori su elettrodotti aerei 380 kV
LELE-07	Lavori su elettrodotti in cavo interrato 150/220/380 kV



SETTORE AT MT BT		
ATTIVITA'	CLASSE	IMPORTI
Linee aeree AT	VII	oltre 15,4 mln €
Linee in cavo AT	III BIS	fino a 1,5 mln €
Cabine primarie	IV	fino a 2,3 mln €
Linee NT/BT	VIII	oltre 15,4 mln €
Cabine secondarie	VIII	oltre 15,4 mln €

Company's growth

I NUMERI DELLE DINAMICHE – “MEDIO-GRANDI”



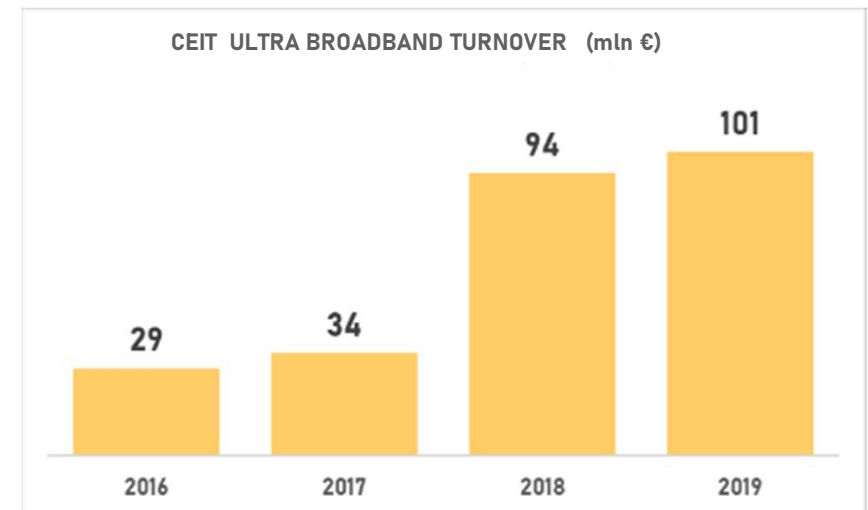
IN OCTOBER 2016 MEDIOBANCA PLACED CEIT IN 4TH POSITION AMONG THE MEDIUM-LARGE (*) *DYNAMIC COMPANIES* (**)

* Medium – large: revenues from 355 million to 3 billion euros or employees > 499

** Companies achieving in 2015 sales growth to at least 20% compared to pre-crisis levels in 2007 and 2014 and an impact on 2015 revenue by more than 4%

Telco 1/2

THANKS TO ITS COMPETENCES ACQUIRED OVER THE YEARS AS A REFERENCE PARTNER FOR MAIN ITALIAN CARRIERS, CEIT MAINTAINS ITS LEADERSHIP POSITION ON THE INFRASTRUCTURE OF FIXED AND MOBILE TELECOMMUNICATIONS MARKET AND A KEY PLAYER ROLE ON UBB NETWORKS



ACCESS AND BACKBONE FIXED NETWORKS

FIBRE OPTIC: FTTC, FTTS, FTTN, FTTH, FTTE

- Final Design of physical network
- Professional services: permitting, acquisition
- Activities planning , workflow management , logistic
- Network Infrastructure deployment
- Equipment installation and commissioning
- FTTx Project Creation and Delivery
- Maintenance on whole network system

MOBILE NETWORKS

GSM, UMTS, 4G , 5G, FWA, WIRELESS

- Professional services: permitting, acquisition, final Design
- RBS and Microwave link deployment
- Civil Works, antennas installation,
- Power systems, conditioning, cabling
- Equipment installation and commissioning
- Measurements and Tests
- FTTN – Fiber to the Node
- Preventive, corrective, upgrading maintenance
- Site structural interventions
- Site power and conditioning systems remediation

Telco Main Customers



Transportation 1/3



GAINED EXPERIENCE AND TECHNICAL CAPABILITIES
DEPLOYING AND OPERATING COMPLEX LARGESCALE
INFRASTRUCTURES WITH A COUNTRYWIDE ORGANIZATION
ENABLED CEIT TO MANAGE STRATEGIC SYSTEMS, WHERE
OPERATIONAL READINESS, EFFICIENCY AND SAFETY ARE
STRONGLY REQUIRED

- RAILWAY INSTALLATIONS
- ROADS AND MOTORWAYS NETWORKS
- MILITARY AND CIVILIAN AIRPORTS

RAILWAY NETWORKS

Signalling systems: ACEI/ACC/ACCM, track circuits, enti di piazzale, axle counter systems, LED signalling positioning, level crossing and related control systems, maintenance

Safety Systems: Automatic Train Protection (earthing SCMT), automatic block sistem (BACC), temperature detector for bushings and brakes. (RTB/RTF), CTC System

Telecommunications: networks, transmission and selective systems for railways, copper cables and fibre optics laying for dedicated transmission networks (622 - 155 Mbit/s) in PCM/SDH e STSI standard, radiocoverage of tunnels and for GSM-R

Auxiliary Systems: tunnel safety systems for subways, LFM, TVCC installations, fire detection and fighting systems, intrusion alarms, conditioning, maintenance

Electric traction: distribution lines, primary and secondary SSE, electric panels supply and installation

MOTORWAYS AND ROADS

Technological systems installation and maintenance

 Requalification of service areas

 Lighting of service areas, lanes, billboards

 Energy Upgrading of tunnels

 Installation of Variable Message Signs

 Installation of URV-Radar SICVE equipment

 Solar Plants on ground, parking areas and platform
 roof

 Traffic monitoring system

 Signalling Systems

 Control and videosurveillance

AIRPORTS

Ordinary and extraordinary maintenance of:
telco networks, H/M electric networks for energy
distribution

 Ducts adjusting and laying of MT cables

 Active and passive cabling

 Telegraphic and telephonic networks upgrading

 Light visual boards upgrading

Transportation – Main Customers



Innovation - IoT

CEIT'S AMBITION IS TO CONTINUOUSLY SUPPORT ITS CUSTOMERS ENHANCING SERVICES WITH ADVANCED SOLUTIONS, BASED ON NEW PARADIGMS ENABLING THE INTERNET OF THINGS.

SMART ROADS - Wi-Fi networks in motion a 2.4/5 ghz, charging station platform for electric vehicles, monitoring system of traffic, freight, environment and infrastructure also through drones, variable message panels

SMART CITY - deployment and maintenance of integrated and multiservices networks for connectivity in urban areas and industrial districts, video surveillance systems, platform for traffic light network and traffic control, Smart Lighting projects for construction, management and maintenance lighting networks, with reducing consumption target

SMART BUILDINGS - video surveillance and anti-intrusion systems, information totems, digital message panels



Energy 1/2



WITH PROFESSIONAL SKILLS AND ADVANCED ASSETS CEIT IS LEADER IN DESIGN, CONSTRUCTION AND MAINTENANCE OF LARGE PLANTS FOR ENERGY PRODUCTION AND DISTRIBUTION.

ITS VISION TO THE FUTURE KEEPS CEIT IN FIRST LINE IN THE RENEWABLE ENERGY SECTOR

CEIT IS AN ESCO - UNI CEI 11352 ENERGY SERVICES COMPANY



POWER GRIDS

Design and deployment
of large production plants and distribution
networks
Overhead and underground power lines in
high, medium and low voltage
Ordinary and extraordinary maintenance of MV / LV lines
Expansions, upgrading
and ancillary services
Primary and secondary substations
Civil and industrial power systems.

RENEWABLE ENERGIES

Turn-key solutions for wind farms
and photovoltaics plants on large areas
Site preparation
Low and Medium voltage cable ducts
Connection to delivery point
Supply and laying of cables, structures,
panels and inverters
Substations
Surveillance

Energy – Main Customer



RENEWABLE ENERGIES

REFERENCES



Energy Customers

LONG EXPERIENCE IN RENEWABLE, PHOTOVOLTAIC AND WIND ENERGY, DEPLOYING WIND AND SOLAR PLANTS TURN-KEY SOLUTIONS FOR MAIN NATIONAL AND INTERNATIONAL OPERATORS



SITO	POTENZA
Vaglio di Basilicata (PZ)	16 MW
Volturino (FG)	13 MW
Foiano (BN)	13 MW
Faeto (FG)	21 MW
Sella Di Conza (SA)	28 MW
Lucito (CB)	34 MW
Castiglione M.M (CH)	34 MW
Schiavi d'Abruzzo (CH)	11 MW
Troia (FG)	14 MW



SITO	POTENZA
San Giovanni Lipioni (CH)	10 MW



SITO	POTENZA
Vallefolmo (PA)	18 MW
Oschiri (SS)	46 MW
Collarmentele (AQ)	10 MW
Scalfani Bagni (PA)	10 MW
Sedini (SS)	14 MW
Tula ed Erula (SS)	80 MW
Portoscuso (CI)	90 MW
Pietragalla (PZ)	18 MW
Barile Venosa (PZ)	8 MW



Energy Customers



SITO	POTENZA	TIPOLOGIA	ATTIVITA'
Sigonella (CT)	10 MW	a terra	Progettazione e realizzazione impianto chiavi in mano
Condrogianos (SS)	0,5 MW	a terra	Progettazione e realizzazione impianto chiavi in mano

SITO	POTENZA	TIPOLOGIA	ATTIVITA'
Larissa (Grecia)	2 MW	a terra	Progettazione e realizzazione impianto chiavi in mano
Kryoneri (Grecia)	3,6 MW	a terra	Progettazione e realizzazione impianto chiavi in mano
Farsala III (Grecia)	0,92 MW	a terra	Progettazione e realizzazione impianto chiavi in mano
Ekta Fthiotida (Grecia)	2 MW	a terra	Progettazione e realizzazione impianto chiavi in mano



SITO	POTENZA	TIPOLOGIA	ATTIVITA'
Pescina (AQ)	5,0 MW	a terra	Connessioni MT interne ed esterne, fornitura ed installazione di inverter e cabine MT
Avezzano (AQ)	4,0 MW	a terra	



SITO	POTENZA	TIPOLOGIA	ATTIVITA'
Galatina (LE)	9,6 MW	a terra	Preparazione sito, recinzione, cavidotti di bassa e media tensione compreso la fornitura e posa dei cavi, inverter, guardiana
Marsciano (PG)	1,6 MW	a terra	Preparazione sito, recinzione, cavidotti di bassa e media tensione, allaccio al punto di consegna, compreso la fornitura e posa dei cavi, posa strutture, pannelli, inverter e fornitura della cabina di consegna, guardiana
Marciano (PG)	1,0 MW	a terra	



SITO	POTENZA	TIPOLOGIA	ATTIVITA'
Fiano Romano (RM)	0,476 MW	a terra	Preparazione sito, recinzione, cavidotti di bassa e media tensione, allaccio al punto di consegna, compreso la fornitura e posa dei cavi, posa strutture, pannelli, inverter e fornitura della cabina di consegna
DT5 Fiano Romano e DT7 Pescara	0,564 MW	su coperture	Fornitura e posa di strutture di sostegno su edificio e su pensiline, posa pannelli, fornitura e posa inverter, collegamenti BT/MT e realizzazione cabine MT
Bari (BA)	0,191 MW	su coperture	
Foggia (FG)	0,083 MW	su coperture	
DTT Buildings	0,370 MW	su coperture	
Cassino (FR)	0,199 MW	su coperture	
Aree di servizio	458 MW	su coperture	

Energy Customers

Cliente	Dimensione	Località	Ubicazione	Ruolo di Ceit
Provincia di Ascoli Piceno	0.041 MW	Ascoli Piceno (AP)	su coperture	Fornitura e posa di strutture di sostegno su edificio, fornitura e posa pannelli, fornitura e posa di Inverter, collegamenti BT.
Comune di Chieti	0,019 MW	Chieti (CH)	su coperture	Fornitura e posa di strutture di sostegno su edificio, fornitura e posa pannelli, fornitura e posa di Inverter, collegamenti BT.
Wind	0.066 MW	Torcervara (RM)	su coperture	Fornitura e posa di strutture di sostegno su edificio, fornitura e posa pannelli, fornitura e posa di Inverter, collegamenti BT.
Valagro	0,4 MW	ATESSA (CH)	su coperture	Sostituzione manto di copertura con recupero amianto, oltre all'esecuzione chiavi in mano dell'intero impianto fotovoltaico
Di Vincenzo	0,2 MW	San Giovanni Teatino (CH)	su coperture	Sostituzione manto di copertura con recupero amianto, oltre all'esecuzione chiavi in mano dell'intero impianto fotovoltaico
Semataf	1,1 MW	ATESSA (CH)	a terra	Progettazione e realizzazione impianto a terra, chiavi in mano
Di Vincenzo	1,0 MW	S.Salvo (CH)	a terra	Progettazione e realizzazione impianto a terra, chiavi in mano
Marcantonio	6,0 MW	Lanciano (CH)	a terra	Progettazione e realizzazione impianto a terra, chiavi in mano
3 C	0,34 MW	Scurcola Marsicana (AQ)	su coperture	Fornitura e posa di strutture di sostegno su capannone, fornitura e posa pannelli, fornitura e posa di Inverter, collegamenti BT adeguamento cabina MT

