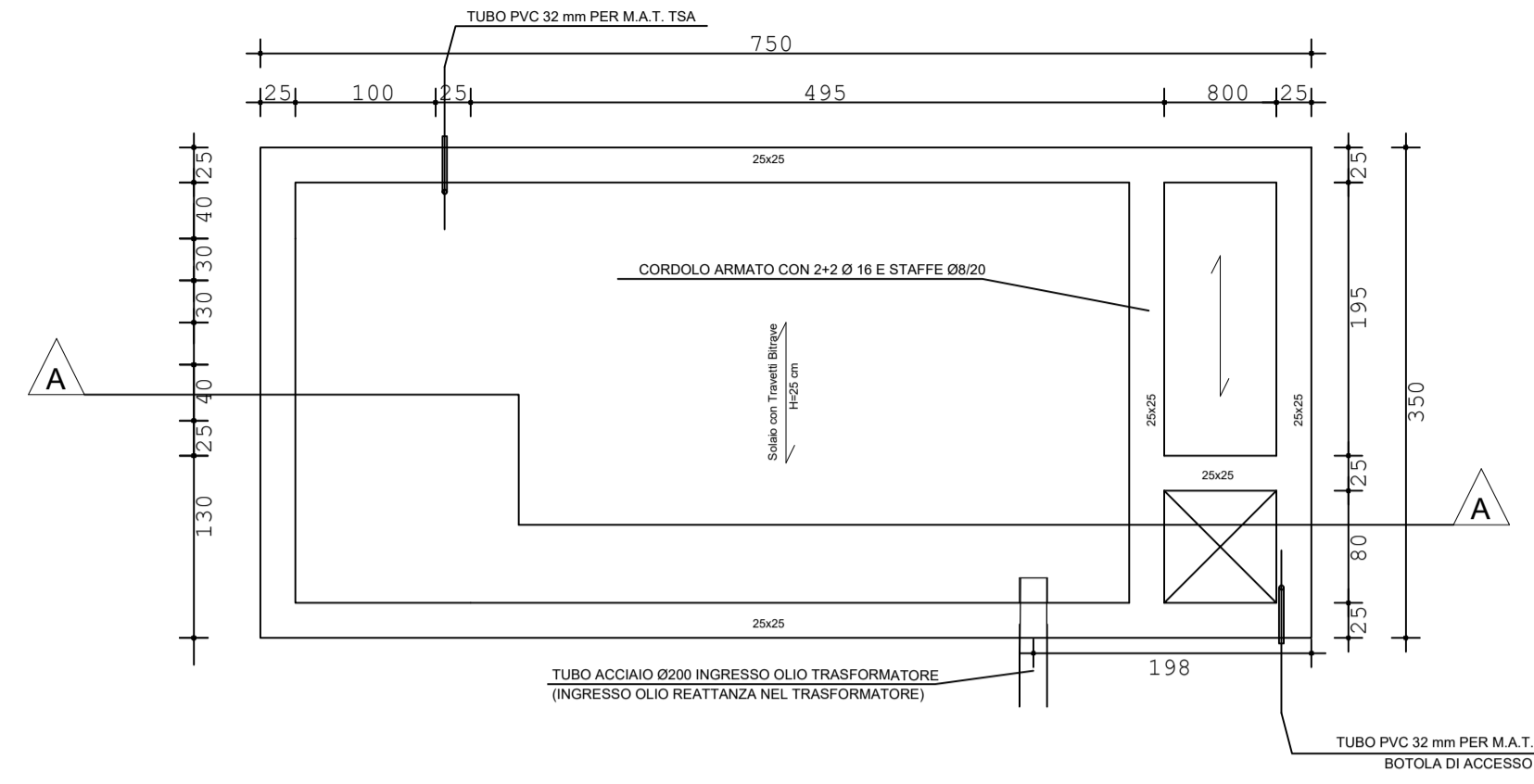
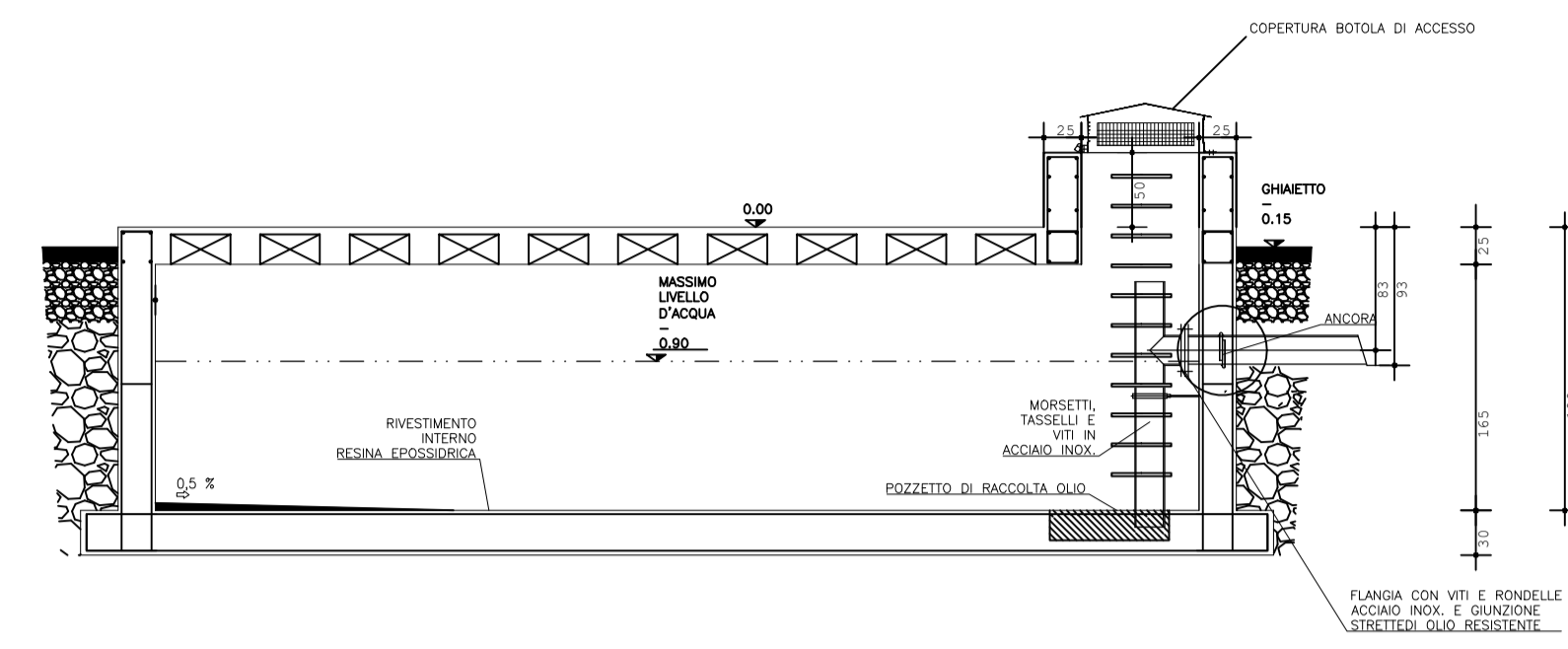


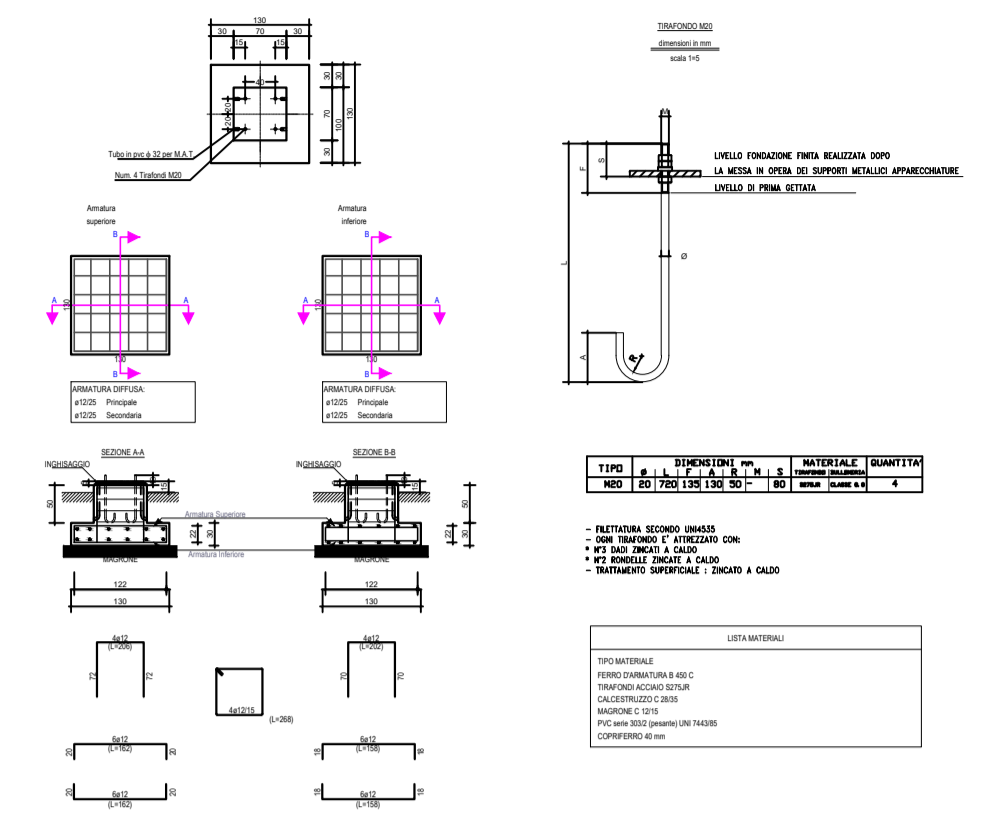
COPERTURA VASCA OLIO



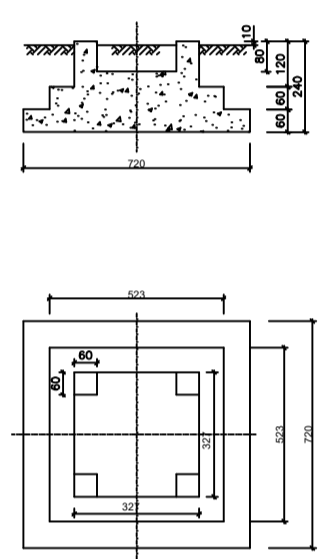
SEZIONE A - A



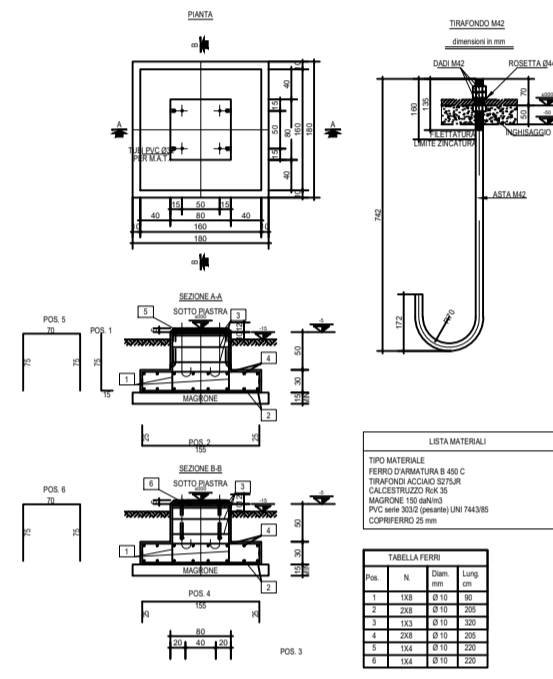
A8 - NEUTRO TR



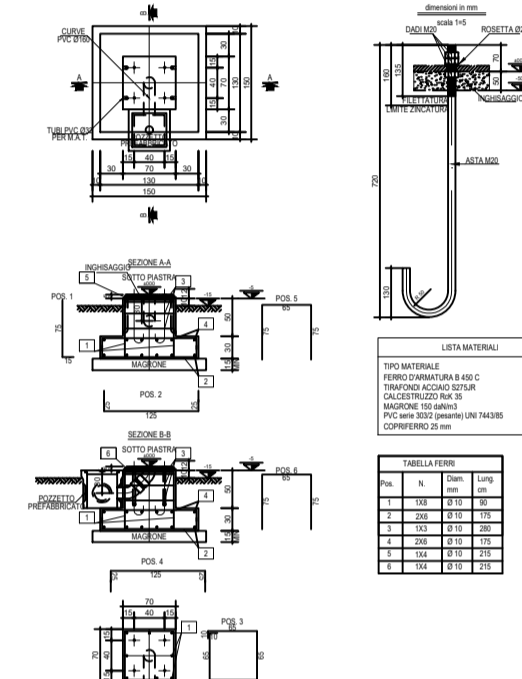
FONDAZIONE SOSTEGNO PORTALE



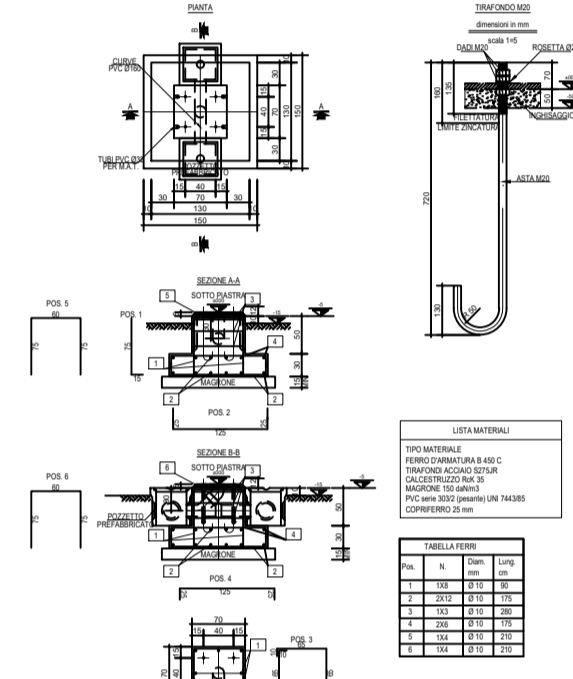
A1 - SCARICATORE



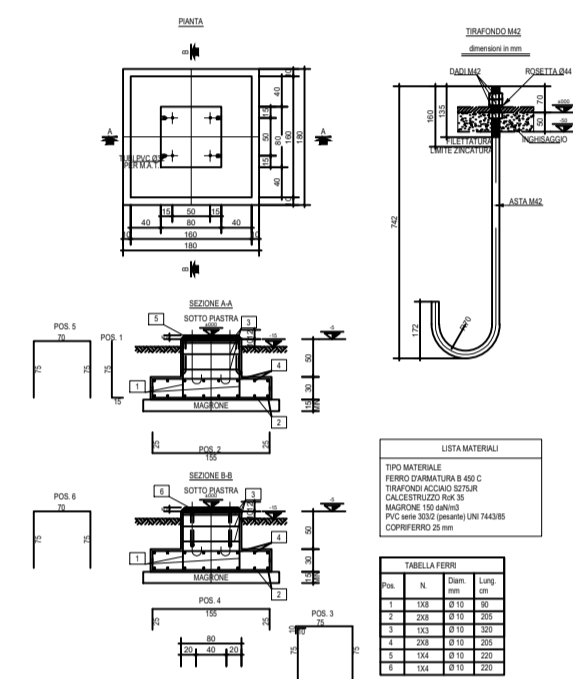
A2 - TRASFORMATORE DI TENSIONE (TV)



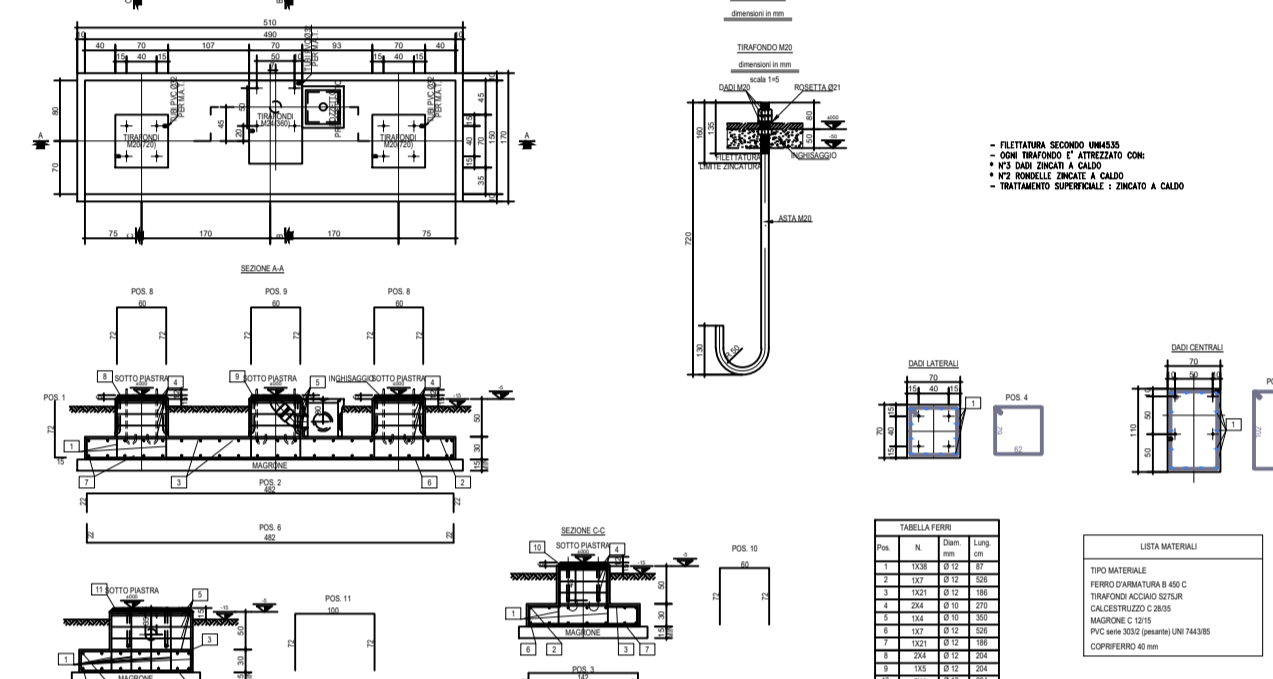
A4 - TRASFORMATORE DI CORRENTE (TA)



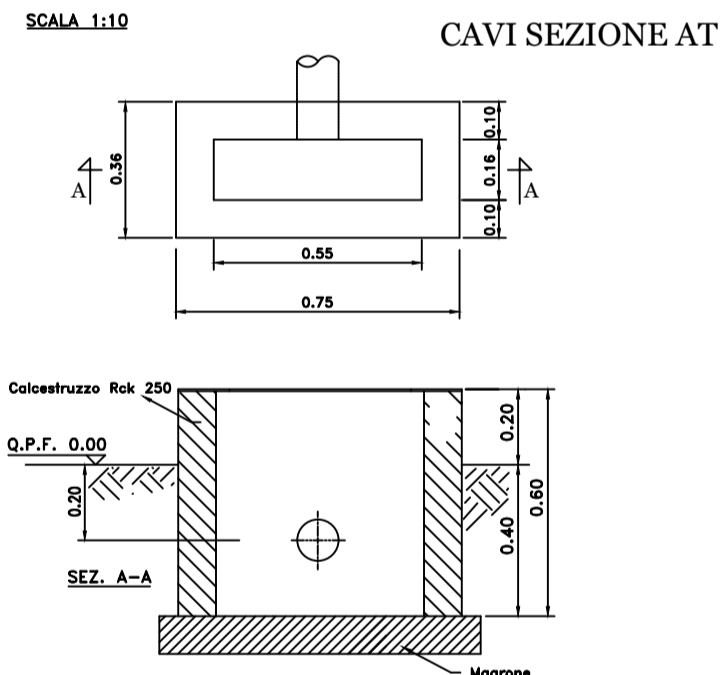
A5 - INTERRUITTORE AT



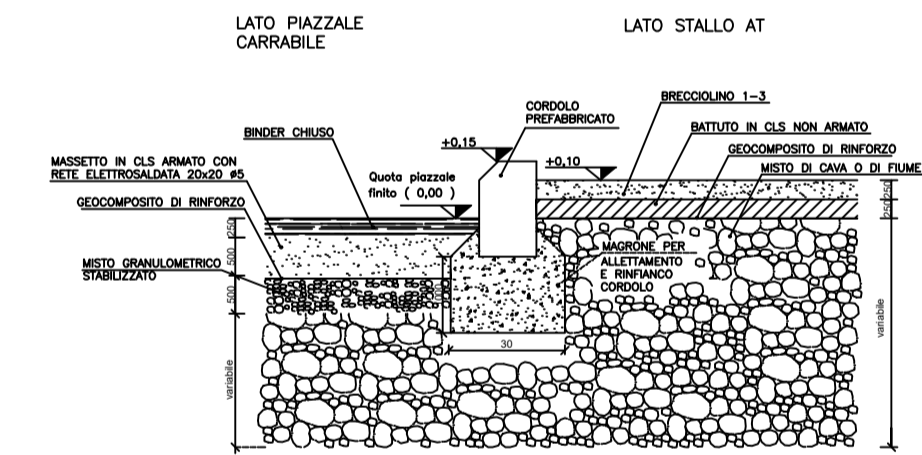
A3 - SEZIONATORE ORIZZONTALE AT



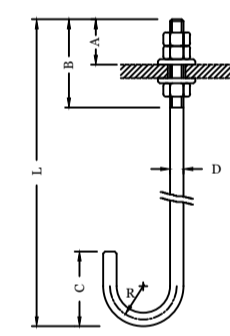
BASAMENTO PER ARMADIO SMISTAMENTO



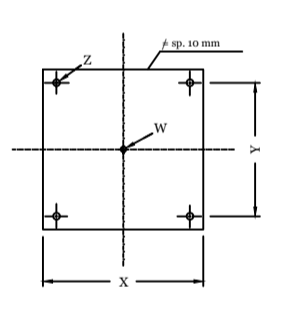
STRATIGRAFIA PIAZZALE



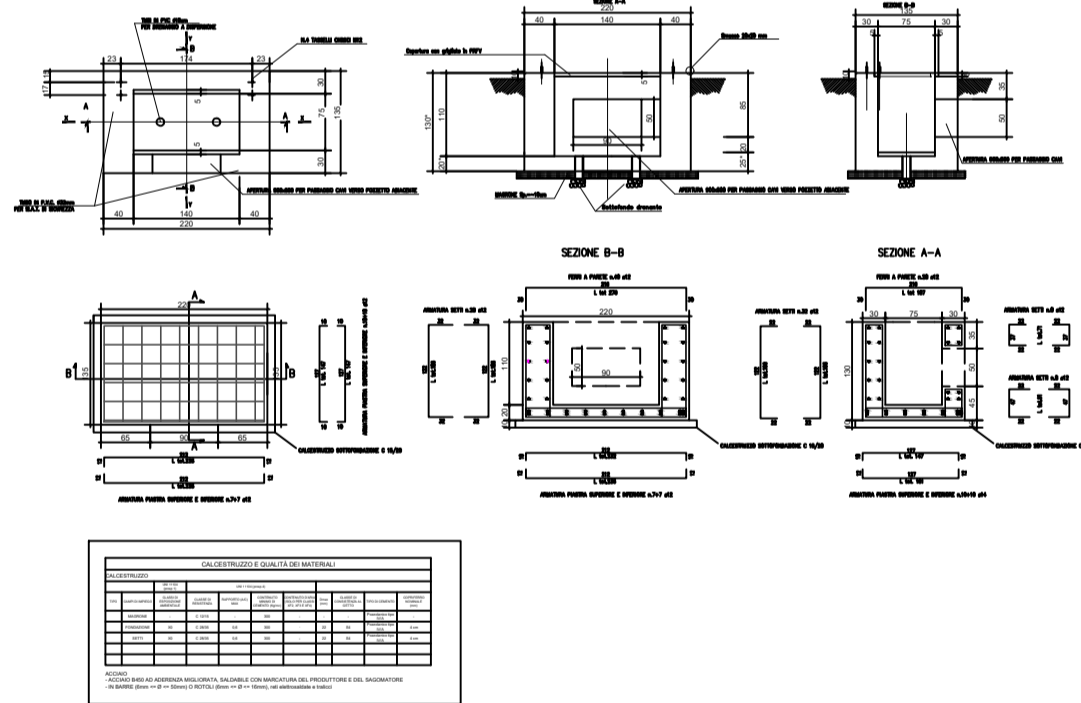
Tirafondi unificati per fissaggio strutture



CONTROPIASTRE PER STRUTTURE TUBOLARI



A13 - CASTELLETTO ARRIVO CAVI MT



Regione: MOLISE
Provincia: CAMPOBASSO
Comuni: ROTELLO, URURI

Impianto fotovoltaico da 120,16 MWp
PROGETTO DEFINITIVO

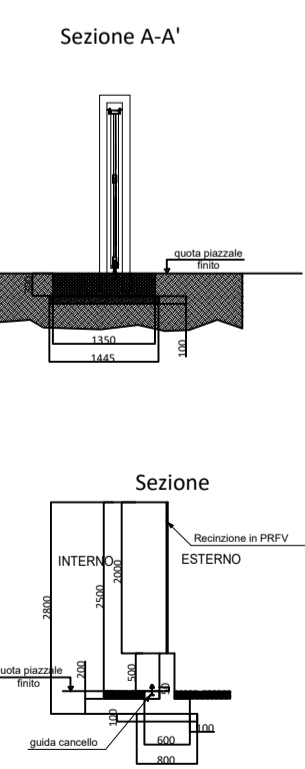
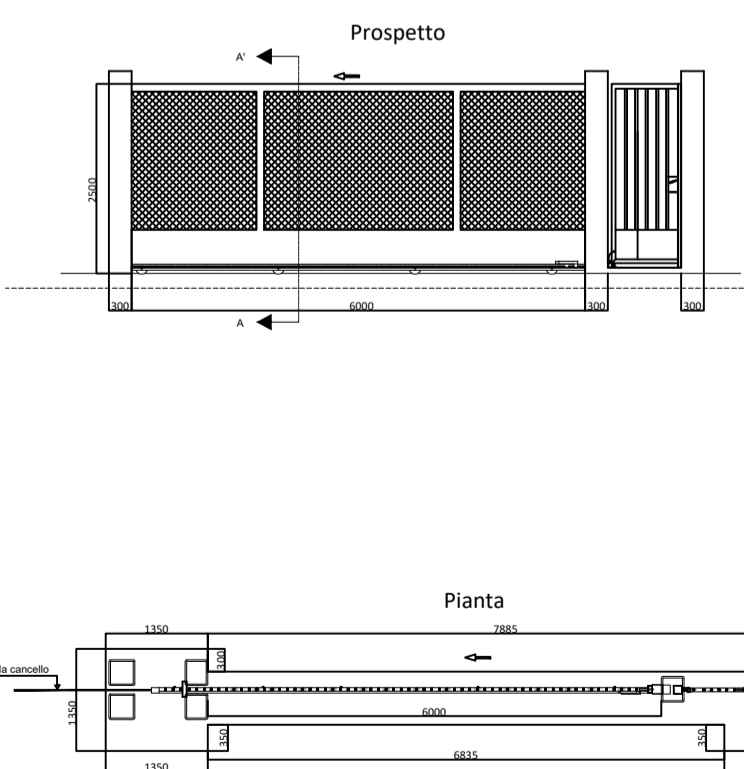
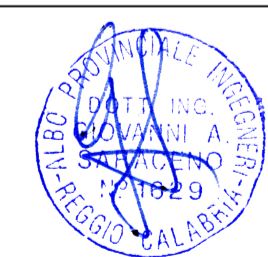
TITOLO:

Stazione di Utente e collegamento alla rete -
Particolari costruttivi

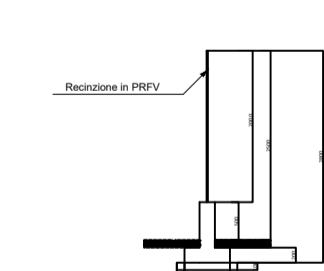
TAVOLA:

064.20.01.W30
1 di 1

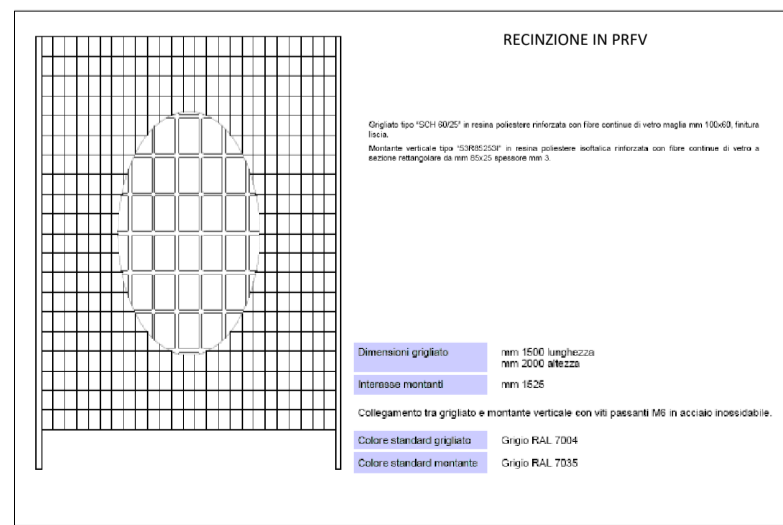
Progettazione
3E Ingegneria S.r.l.
Via G. Volpe n.92
cap 56121 Città PISA
3eingegneria@pec.it
www.3eingegneria.it
info@3eingegneria.it



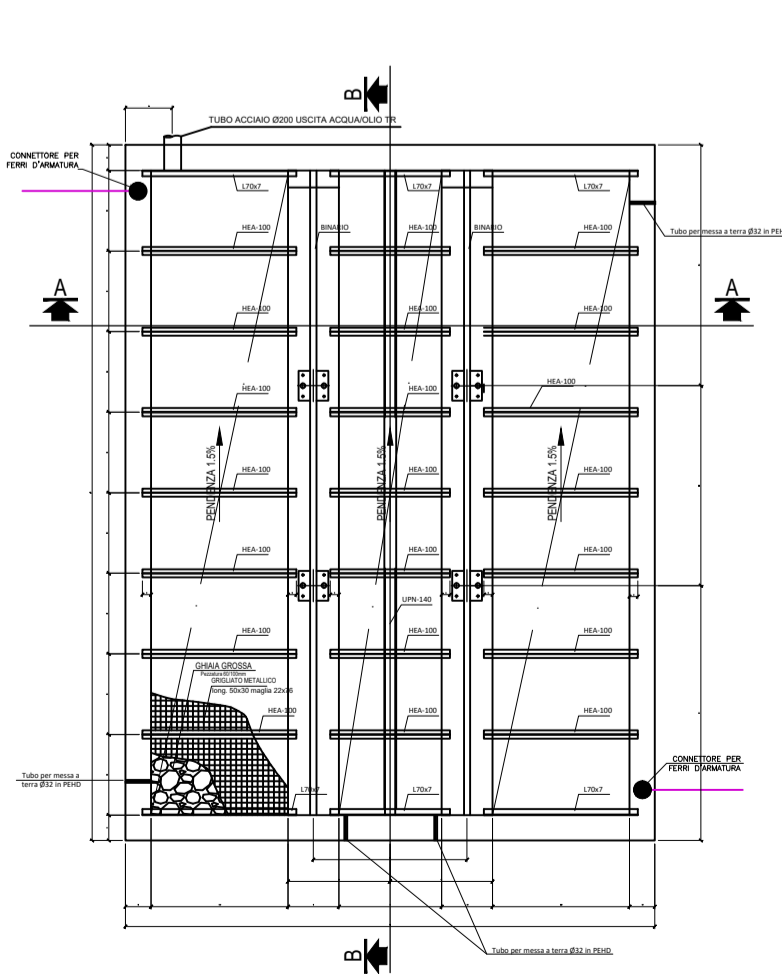
Dettaglio recinzione perimetrale



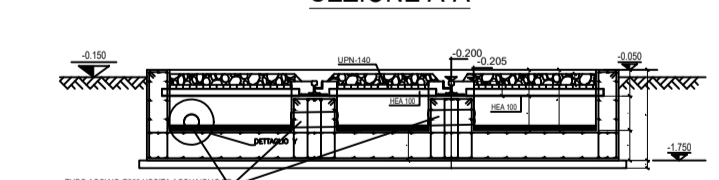
RECINZIONE IN PRFV



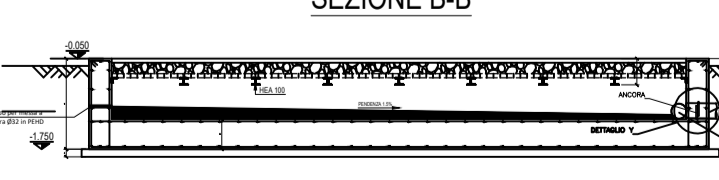
FONDAZIONE TRASFORMATORE - PIANTA



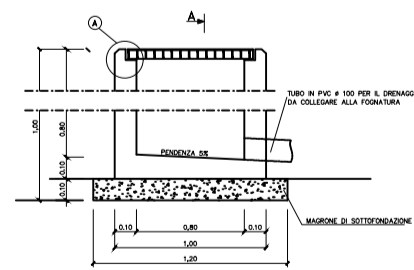
SEZIONE A-A



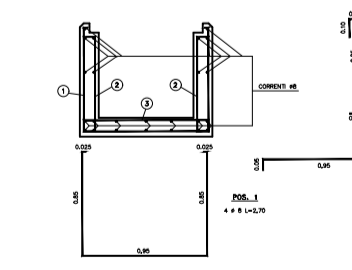
SEZIONE B-B



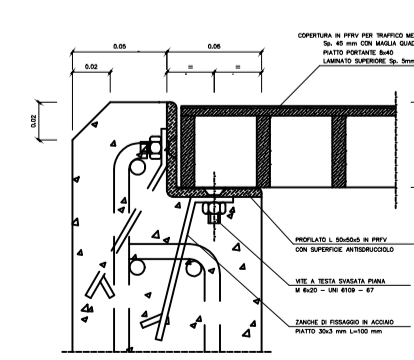
SEZIONE TRASVERSALE CUNICOLO CAVI AT



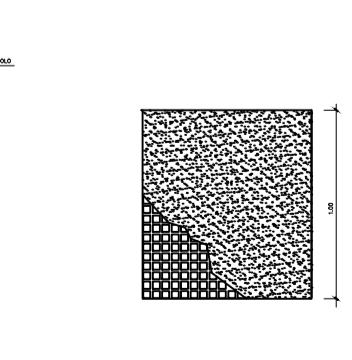
ARMATURA CUNICOLO CAVI AT



PARTICOLARE "A"



COPERTURA PRFV PER TRAFFICO MEDIO PESANTE



NOTA:
- I CANCELLI IN CARPENTERIA METALLICA POTRANNO ESSERE ANCHE DI TIPO COMMERCIALE

* LE DIMENSIONI DELLE MOLE DEI PROFILATI E DEI NODI SONO DI TIPO COMMERCIALE

Rev.	Data	DESCRIZIONE	Elaborato e controllato da:	Approvato da:
0	Dic. 2020	PRIMA EMISSIONE	3E Ingegneria Srl	3E Ingegneria Srl
REVISIONI				

PROponente:
IBVI 3 s.r.l.
Viale Amedeo Duca D'Aosta,76
39100 Bolzano (BZ)
IBVI3srl@Pec.it

Proprietà esclusiva della Società sopra indicate, utilizzo e duplicazione vietate senza autorizzazione scritta.