

# COMUNE DI BRINDISI

(Provincia di Brindisi)

Realizzazione di un impianto agrovoltaiico della potenza nominale in DC di 28,454 MW e potenza in AC di 33 MW denominato "Guarini" in agro di Brindisi in località C.da Vaccaro e delle relative opere di connessione alla Rete di Trasmissione dell'energia elettrica Nazionale (RTN) nell'ambito del procedimento di P.U.A. ai sensi dell'art. 27 del D.Lgs 152/2006 e s.m.i.

Codifica elaborato  
CART\_02

Inquadramento generale intervento  
(IGM - ortofoto - CTR - PRG)

Proponente

 guarini s.r.l.

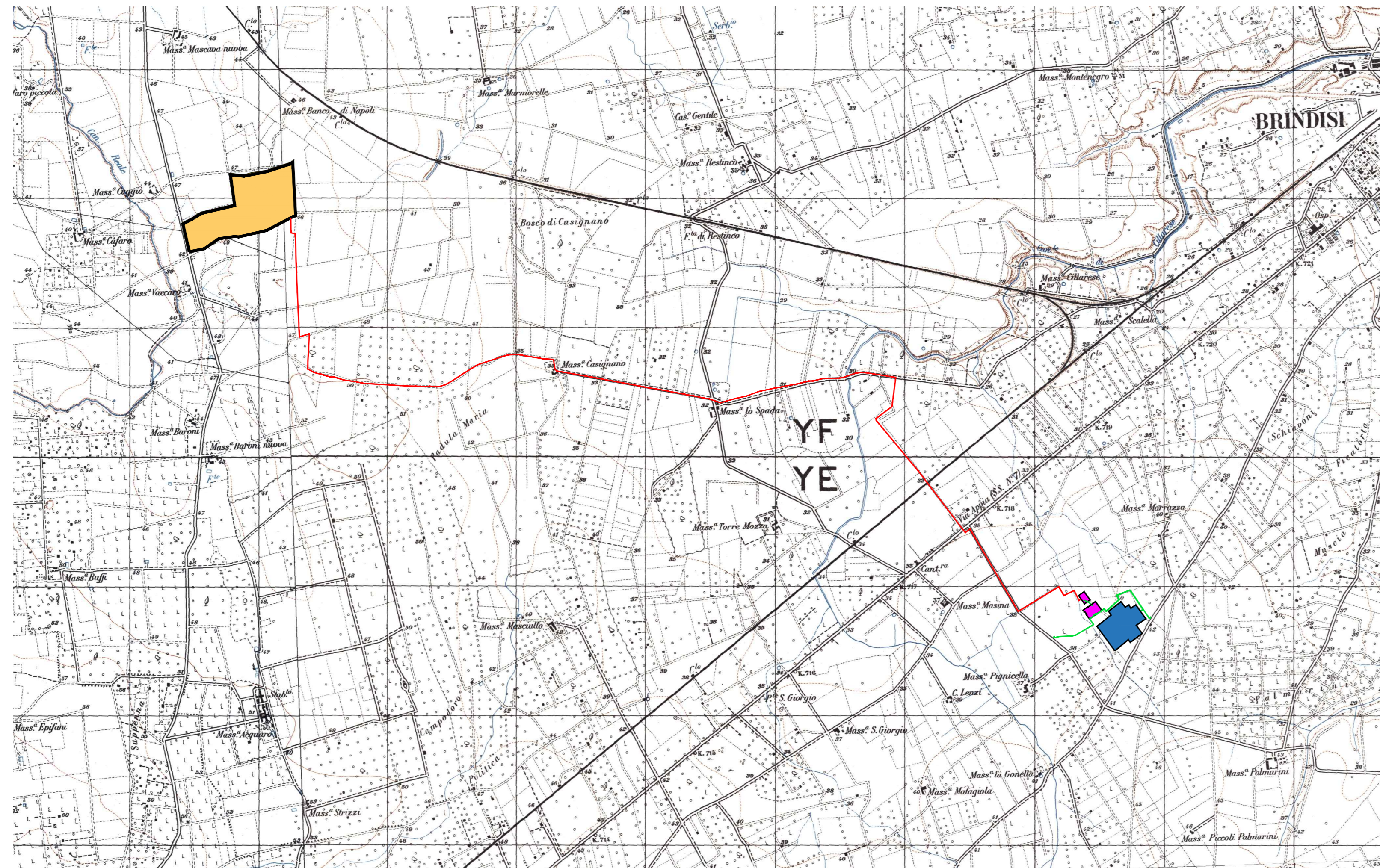
Tel +39 02 454 408 20  
guarini.srl@pec.it

Sviluppatore

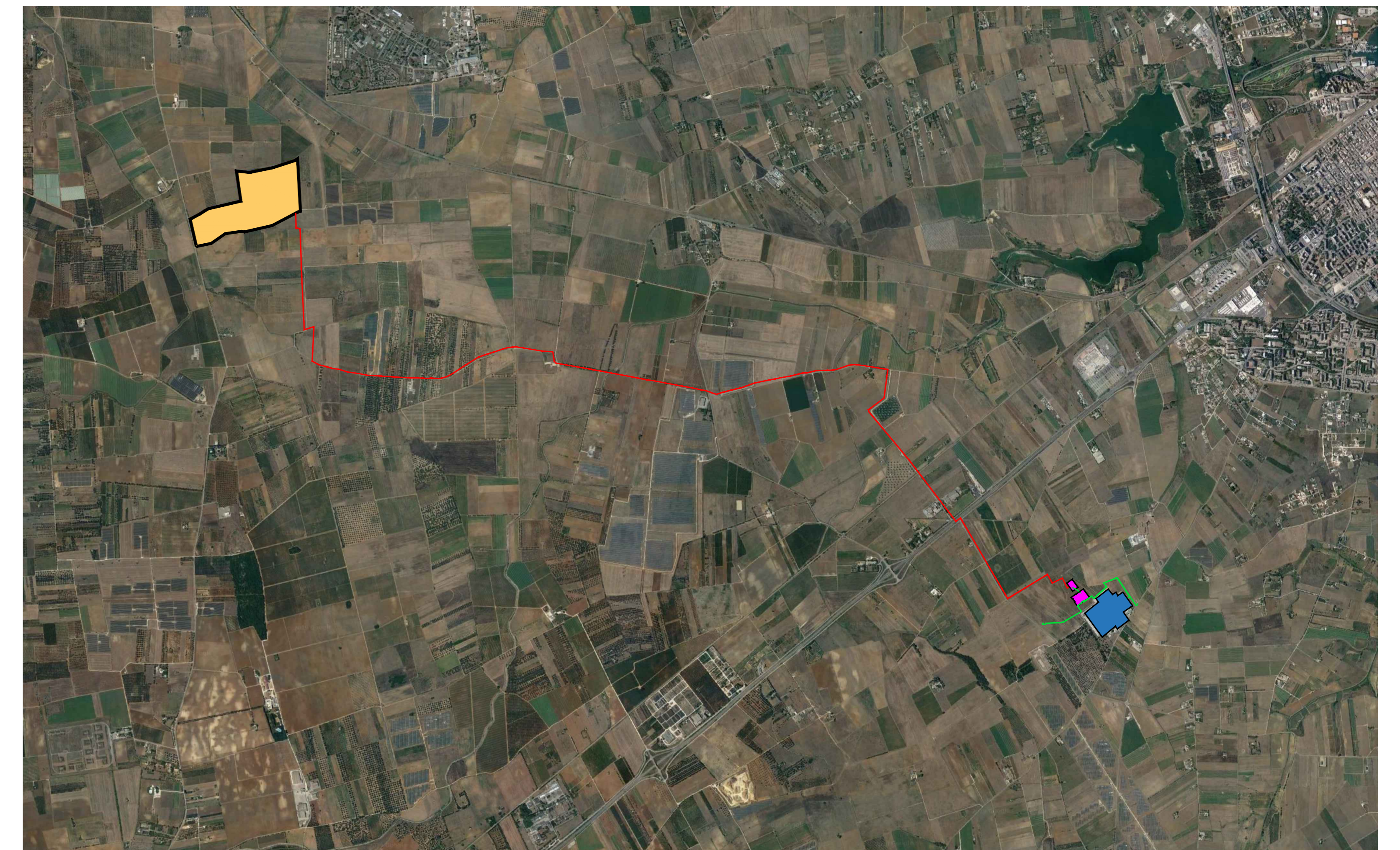
 GREENERGY IMPIANTI S.R.L.  
Via Sacro Cuore SNC - IT 74033 Castellana (TA)  
Tel +39 099446610 Fax +39 099446610  
info@greeneryimpianti.it www.greeneryimpianti.it

REVISIONI	NO	DATA	PRIMA EMISSIONE	DOTT. SSA MARIA ANTONIO	ING. GIUSEPPE MANCINI	GUARINI S.R.L.
	N	DATA	DESCRIZIONE	ELABORATO	VERIFICATO	APPROVATO
TIPOLOGIA DELL'ELABORATO			FORMATO	SCALA	FOGLIO	
CARTOGRAFIA			A0	1:33000	1 / 1	

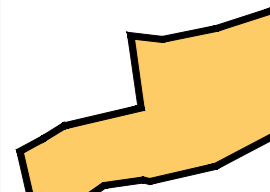

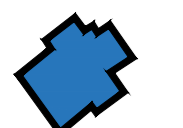
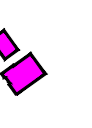

STRALCIO IGM  
scala 1:25000



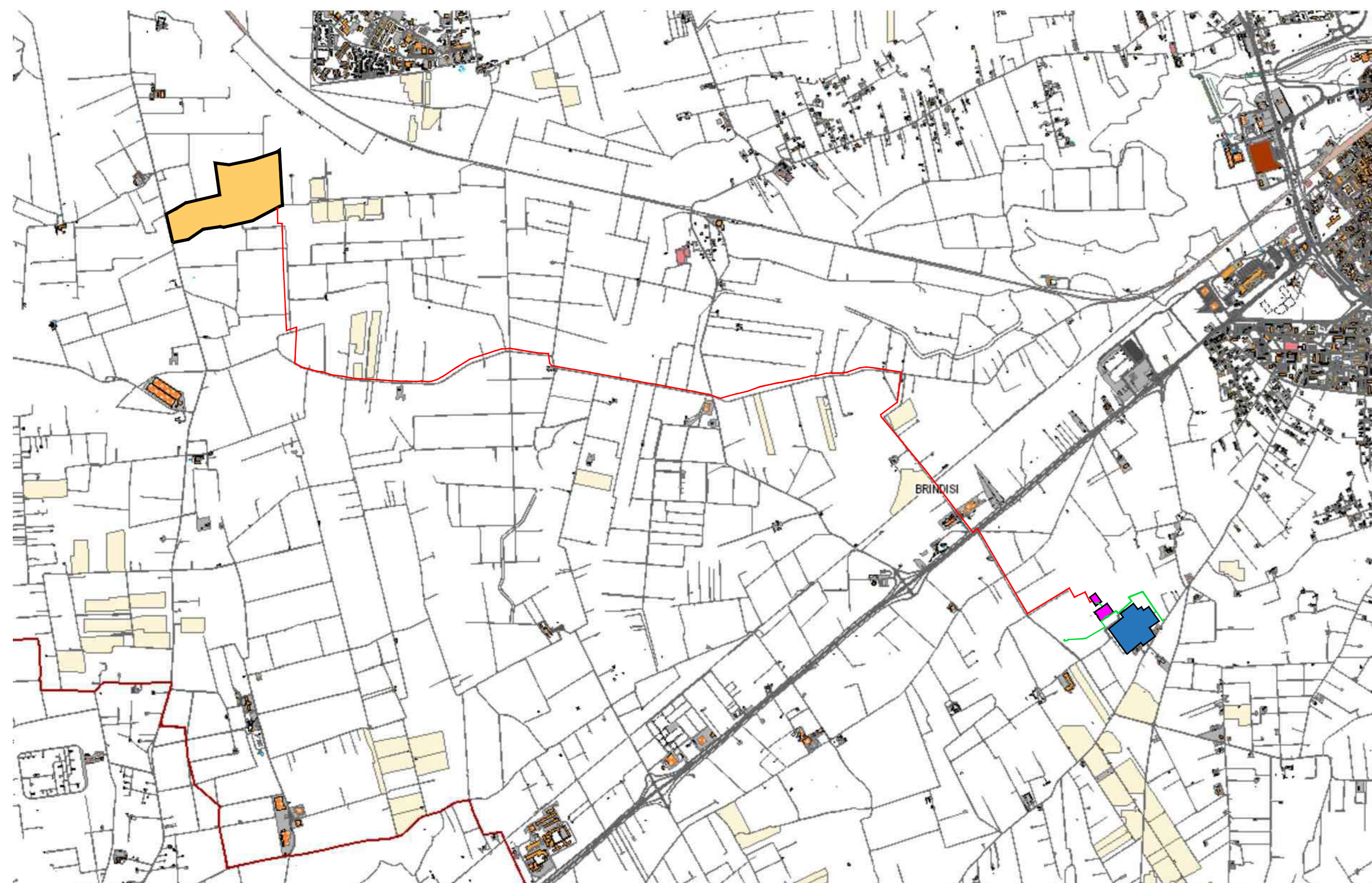
STRALCIO ORTOFOTO  
scala 1:25000



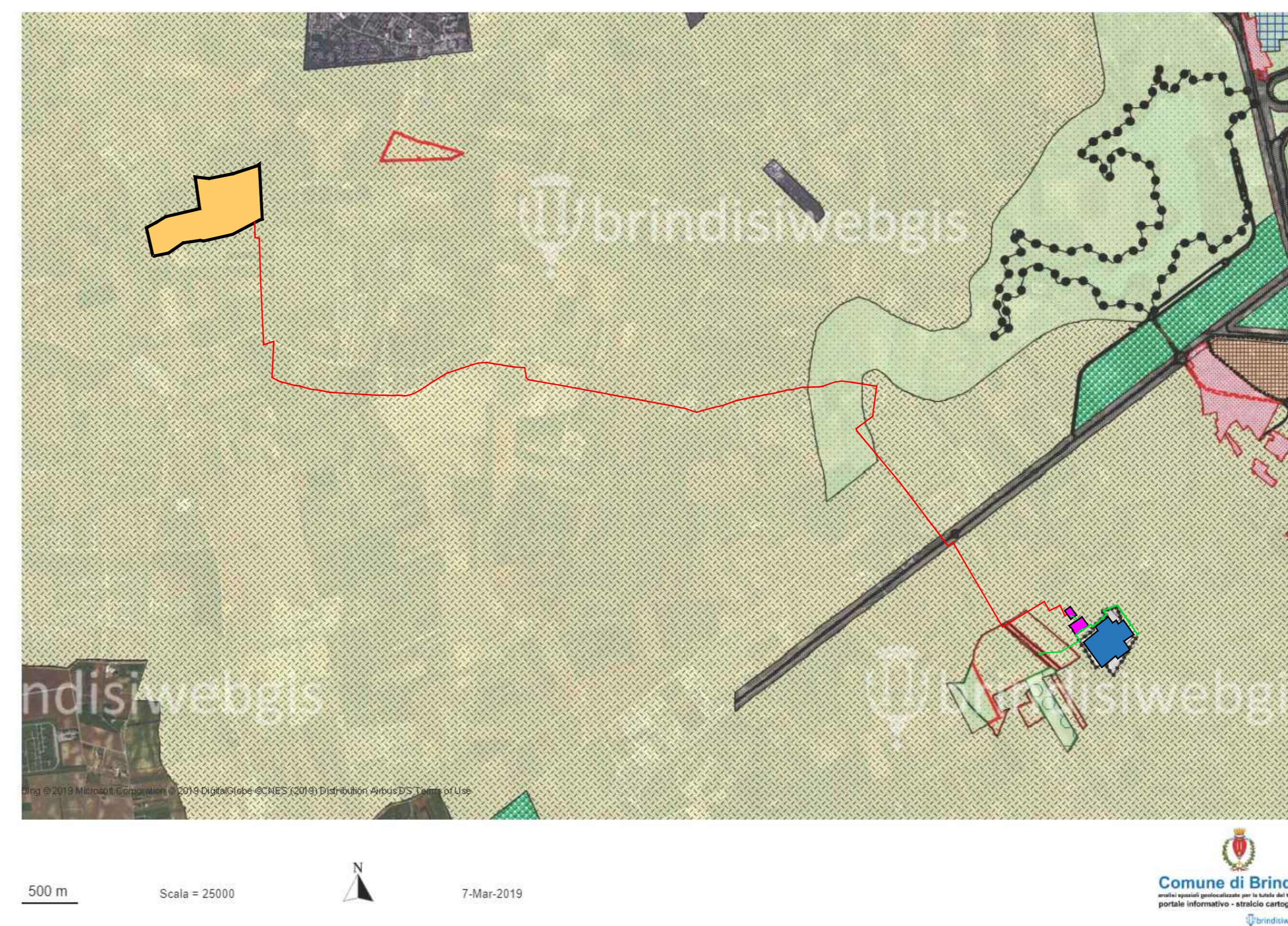
## LEGENDA

-  INDIVIDUAZIONE AREA INTERESSATA DALL'INSTALLAZIONE DI UNA CENTRALE FOTOVOLTAICA
-  INDIVIDUAZIONE ELETTRODOTTO MT INTERRATO DA REALIZZARE
-  INDIVIDUAZIONE STAZIONE TERNA "BRINDISI PIGNICELLE" ESISTENTE
-  INDIVIDUAZIONE INGOMBRO CABINA DI ELEVAZIONE MT/AT E STAZIONE DI SMISTAMENTO
-  INDIVIDUAZIONE ELETTRODOTTO AT DA REALIZZARE

STRALCIO CARTA TECNICA  
scala 1:25000

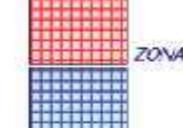
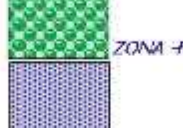
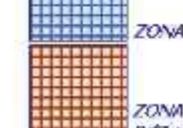

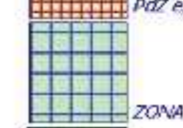





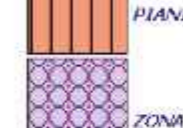


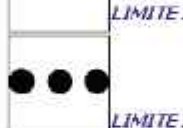



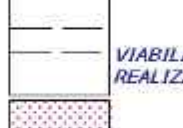









STRALCIO PRG  
scala 1:25000



## LEGENDA PRG

TIPIZZAZIONI PIANO REGOLATORE GENERALE ADEGUATO ALL'LA L.R. 56/80

 ZONA A - CENTRO STORICO	 ZONA F1 - ATTREZZATURE URBANE
 ZONA B1 - COMPLETAMENTO	 ZONA F2 - ATTREZZATURE DI QUARTIERE (DUAL 2-4-8)
 ZONA B2 - COMPLETAMENTO (PER AREE APPROVATE)	 ZONA F3 - URBANI DI QUARTIERE (DUAL 2-4-8)
 ZONA B3 - COMPLETAMENTO	 ZONA F4 - PARCO URBANO E PARIETI (PARALLELI) (DUAL 2-4-8)
 ZONA B4 - COMPLETAMENTO	 ZONA FERROVIARIA
 ZONA C - PIANO 187 APPROVATO (PARTE 1-2/3/5/6)	 ZONA AEROPORTUALE E MILITARE
 ZONA D1 - PRODUTTIVA INDUSTRIALE (P.A.I.)	 SUBRETTO STRADALE E FERROVIARIO
 ZONA D2 - PRODUTTIVA INDUSTRIALE (P.A.I.)	 LINEE ZONA A-E-L
 ZONA D3 - PRODUTTIVA INDUSTRIALE (P.A.I.)	 LINEE ZONA A-E-L
 ZONA E1 - PRODUTTIVA INDUSTRIALE (P.A.I.)	 VIABILITA' PRINCIPALE
 ZONA E2 - PRODUTTIVA INDUSTRIALE (P.A.I.)	 VIABILITA' DI PROTEZIONE REALIZZATA IN DIFFERENZA
 ZONA E3 - AGRICOLA	 LINEE ZONA DI RECUPERO (DUAL 4/7)
	 LINEE ZONA DI RECUPERO (DUAL 4/7)

  
Comune di Brindisi  
servizi operativi geoinformatici per la tutela del territorio  
portale informativo - sistema cartografico  
brindisiwebgis

  
Comune di Brindisi  
servizi operativi geoinformatici per la tutela del territorio  
portale informativo - sistema cartografico  
brindisiwebgis

500 m    Scala = 25000    7-Mar-2019